

PHOTOGRAPHS OF BM11 SENSOR



Figure 1: Sensor Module: Front View



Figure 2: Sensor Module: Rear View

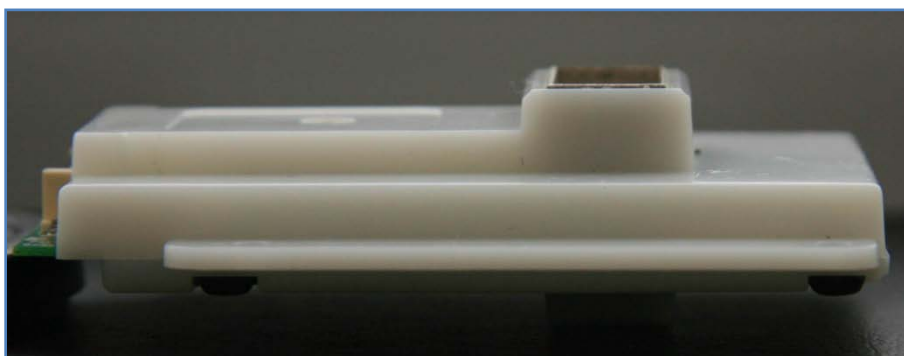


Figure 3: Sensor Module: Side View

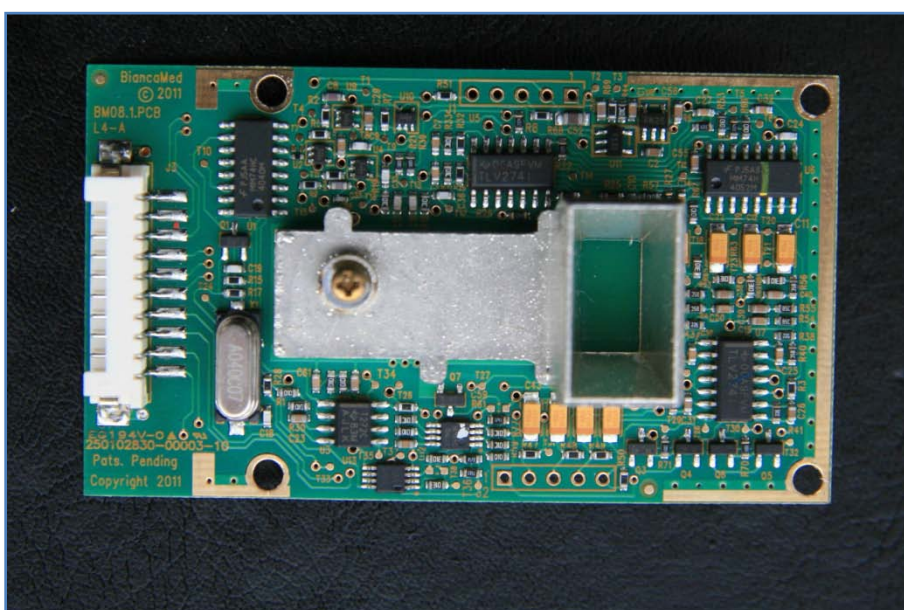


Figure 4: Sensor PCB: Front View

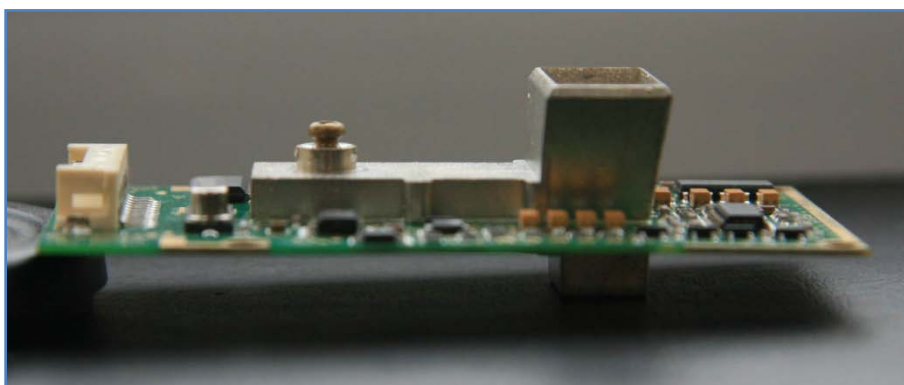


Figure 5: Sensor PCB: Side View

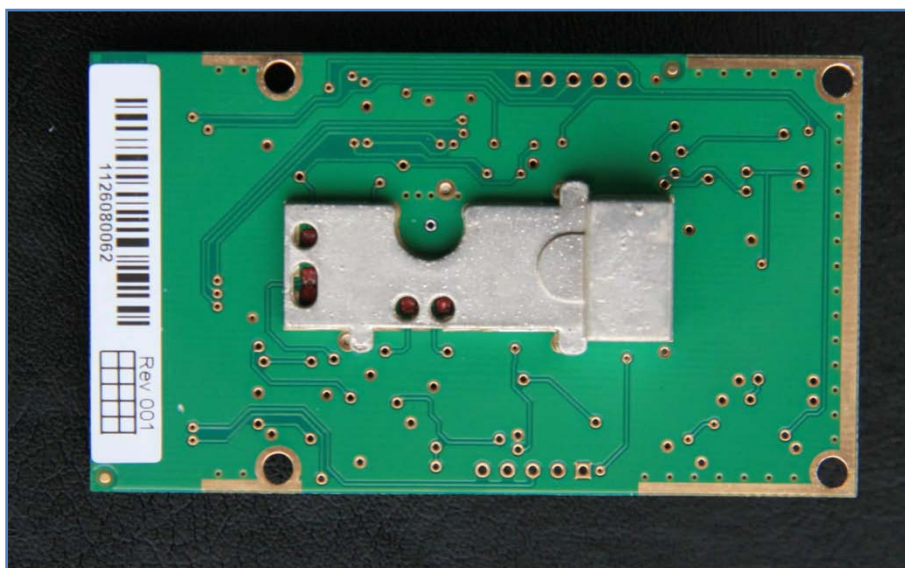


Figure 6: Sensor PCB: Rear View

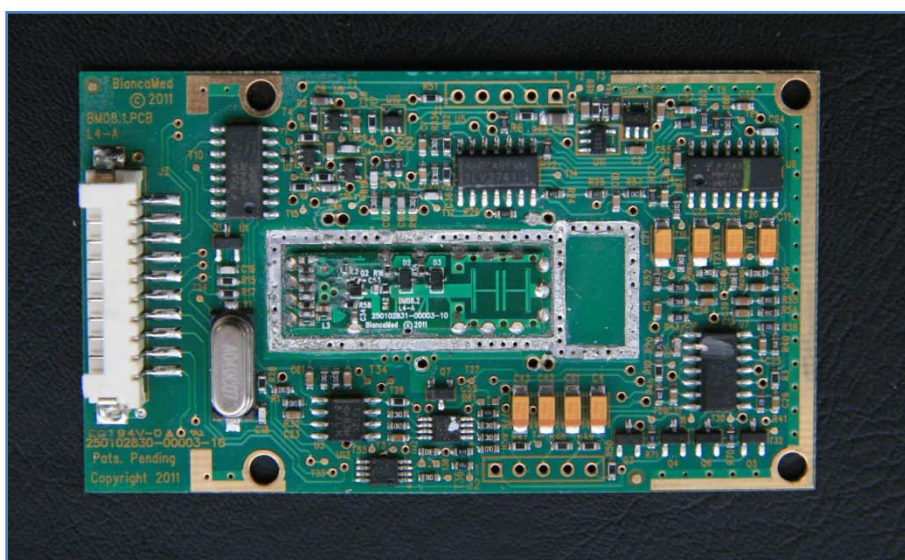


Figure 7: Sensor PCB Front: Resonant Cavity Removed

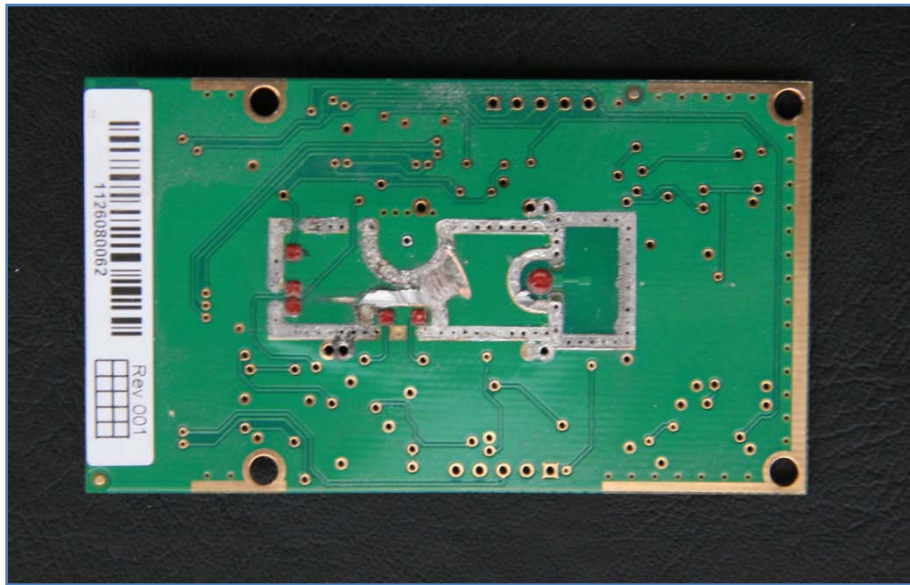


Figure 8: Sensor PCB Rear: Resonant Cavity Removed



Figure 9: Sensor PCB, Side: Resonant Cavity Removed