

Dipole Antenna

- RFDPA171300SBLB801 for Dual Band 2.4/5.x GHz Application

ELECTRICAL CHARACTERISTICS

Item	Specification
Working Frequency Range	2.4 ~ 2.5 / 5.15 ~ 5.85 GHz (Note-1)
Gain	5.0dBi
Return Loss	-10dB(Max)
VSWR	2 max.
Polarization	Linear
Radiation Pattern	Omni-directional
Impedance	50Ω

*Note 1. Central Frequency should be defined after customers' application approval.

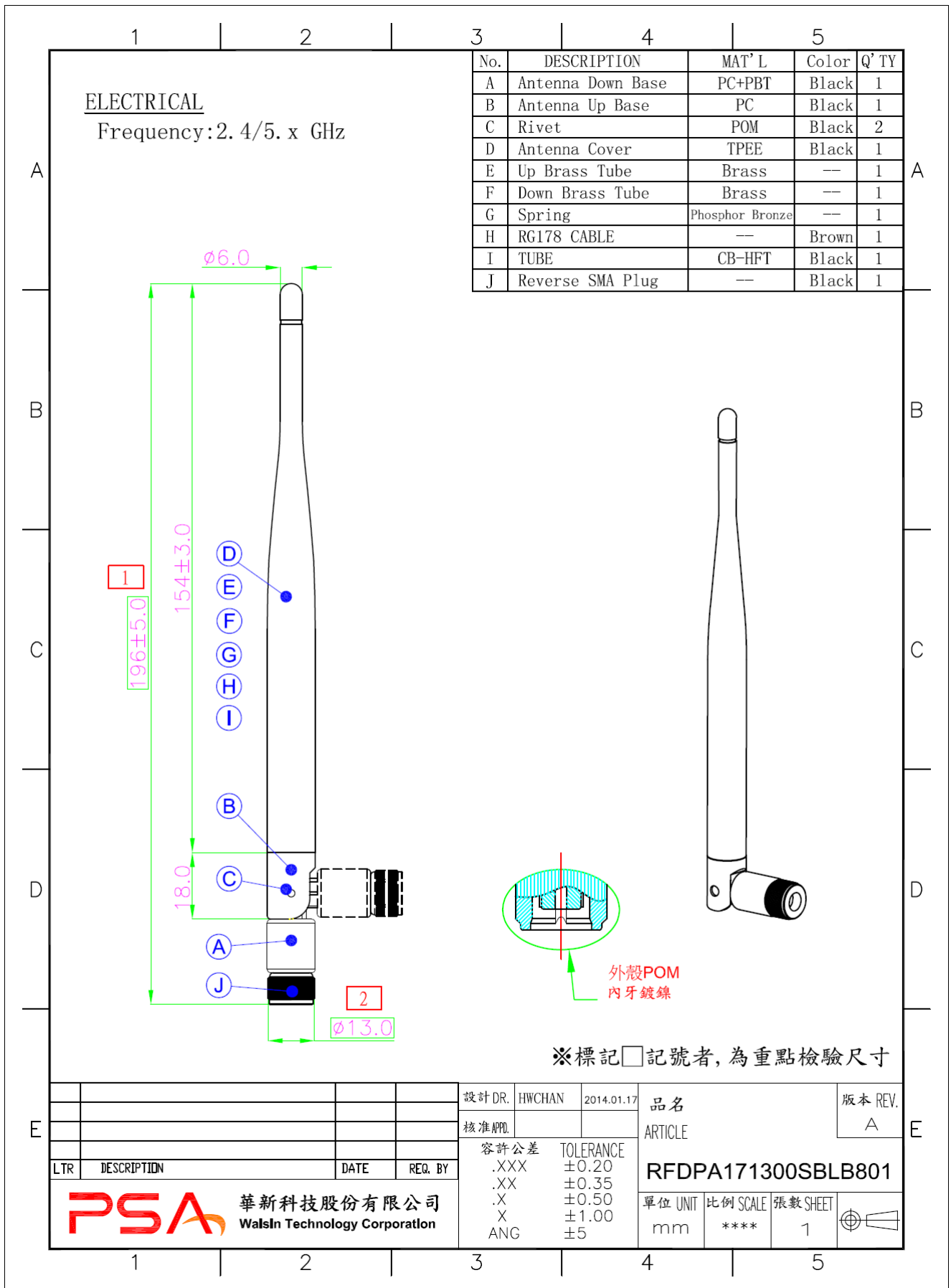
MATERIAL TABLE

Items	Description
Cable	RG178(Brown)
Antenna Cover	TPEE
Antenna Base	PC/PBT
Connector	Reverse SMA Plug
Color	Black
Brass Tube	Brass
Spring	Phosphor Bronze

ORDERING RULE

RF	DPA	1713	00	S	B	L	B	8	01
Type Code	Product Code	Dipole Dimension (Unit: mm)	Cable Length (unit: cm)	Connector Brand	Type of Connector	Application	Project status	Wire Diameter	Project
Walsin RF Device	DPA: Dipole Antenna	Per 2 digits of length, width e.g.: 1713 Length 172mm, Width 13mm	2 digits for cable length e.g.: 00 None Cable	A: N C:MCX D:IPEX III E: IPEX IV F: IPEX A13 H: Hirose I: IPEX M: MMCX S: SMA T: TNC U:MURATA N: None	A: Reverse Female B: Reverse Male F: Female M: Male N: None	0: 0GHz 3: 3GHz 5: 5 GHz 6: 6GHz A: 2.4GHz ISM band B: GSM 900/1800 dual band G: GPS band L: 2.4/5.2/5.8 GHz tri-band N: NFC T:LTE band W: WCDMA band	B: MP T:During Test X: Pile Run	0:None 1:∅0.81 3:∅1.13 6:RG316 7:∅1.37 8:RG178	01~99 series number

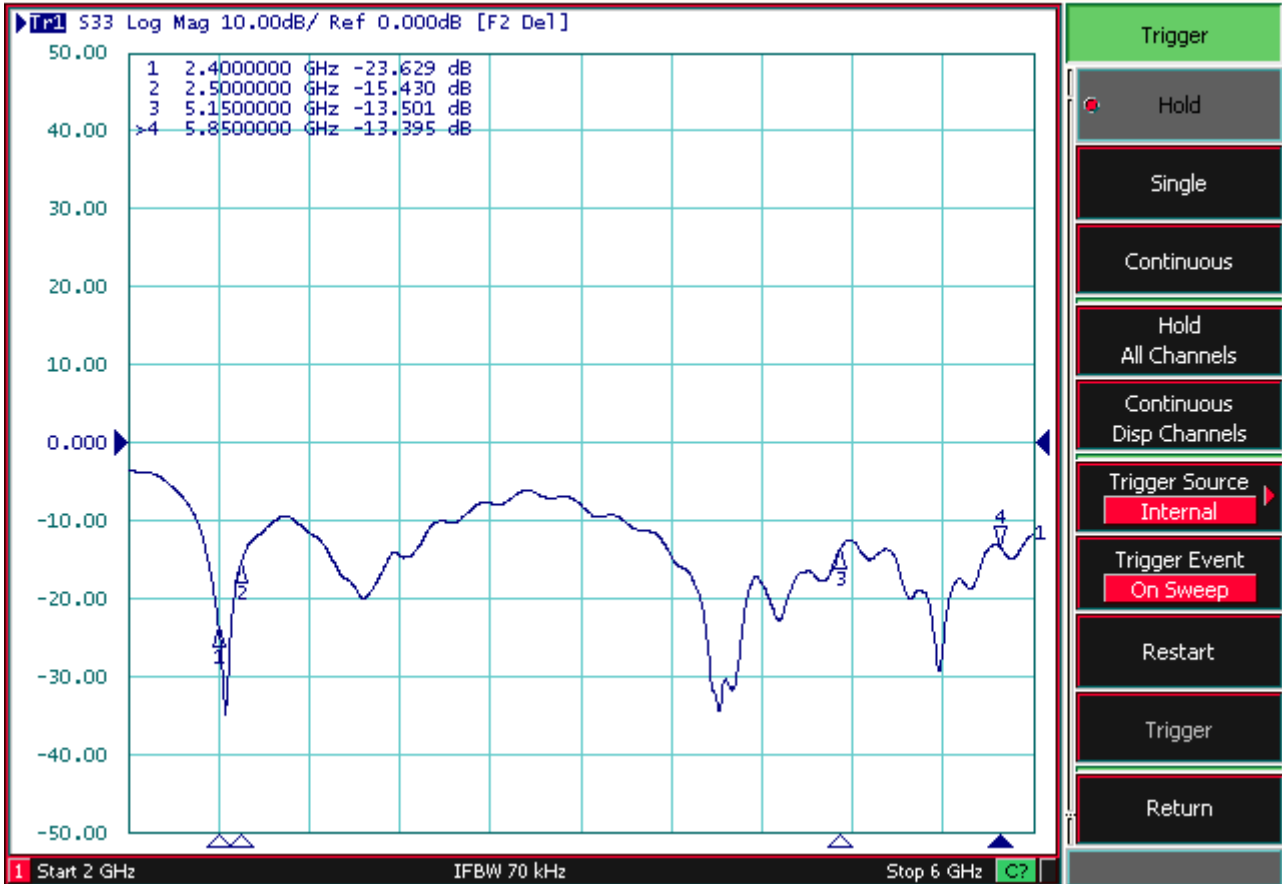
DIMENSIONS



Test Report

ELECTRICAL CHARACTERISTICS

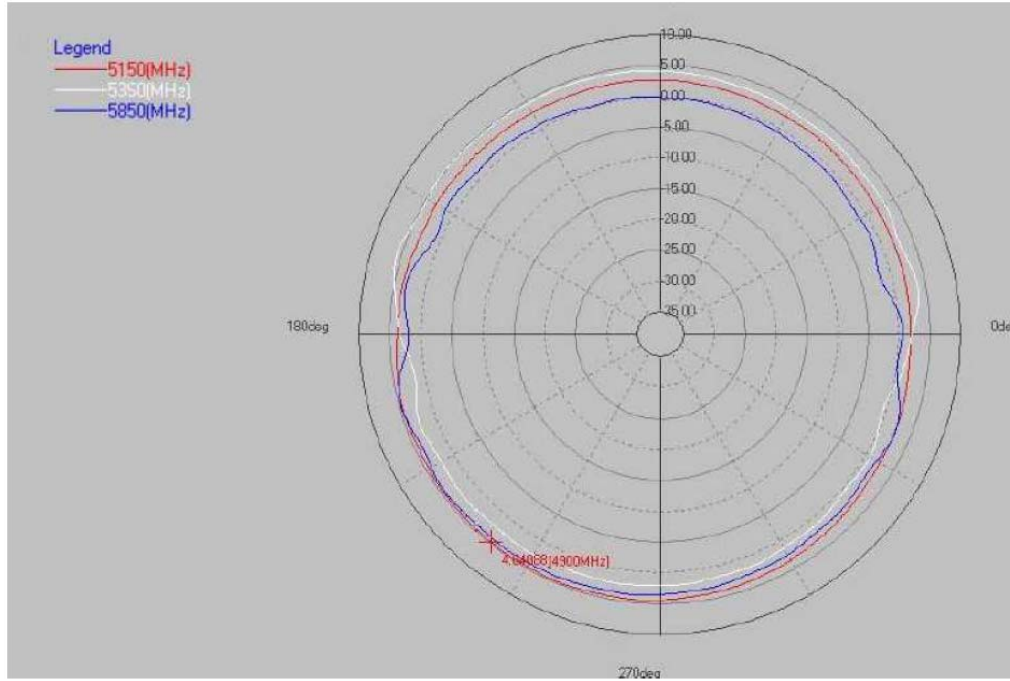
Return Loss



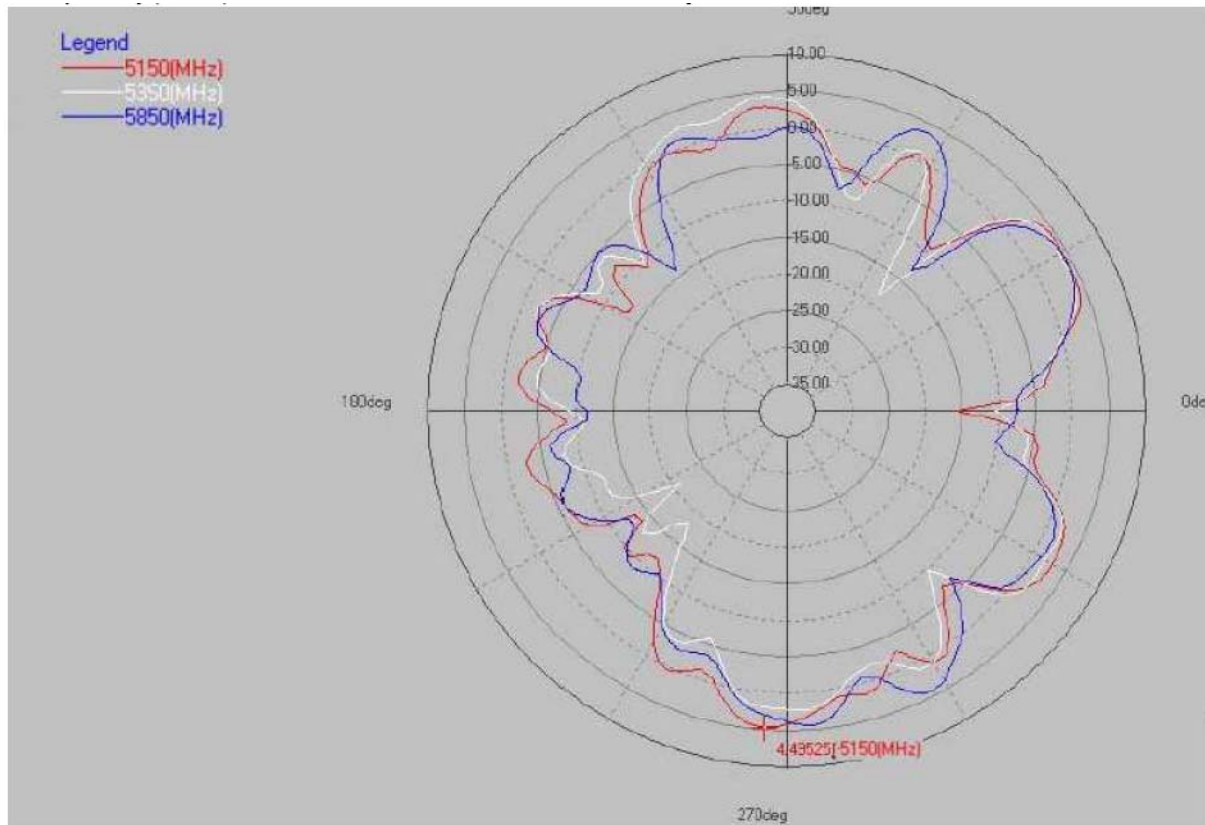
RADIATION PATTERN

2400~2500 MHz

H Plane

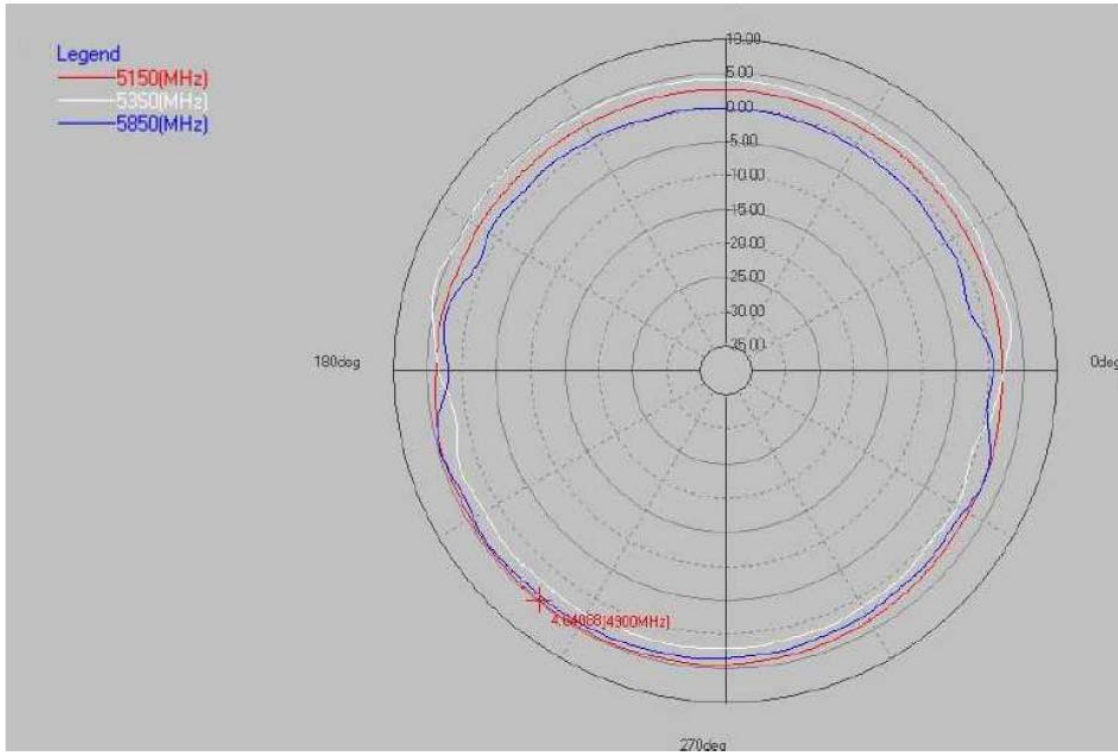


E Plane



5150~5850 MHz

H Plane



E Plane

