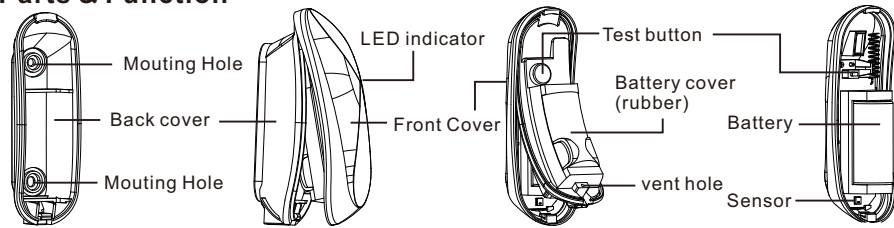


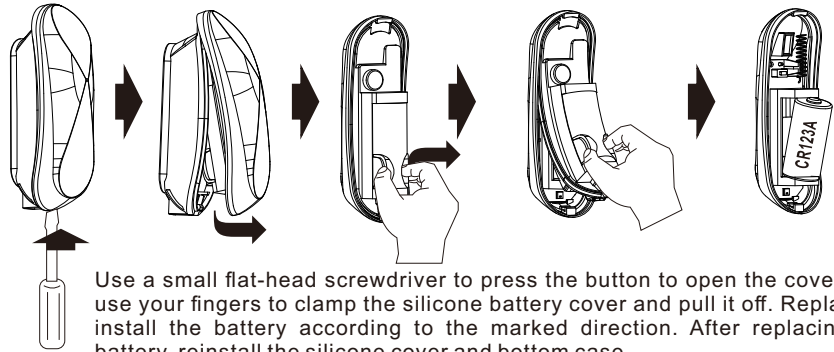
# USER MANUAL

Model: THX-100

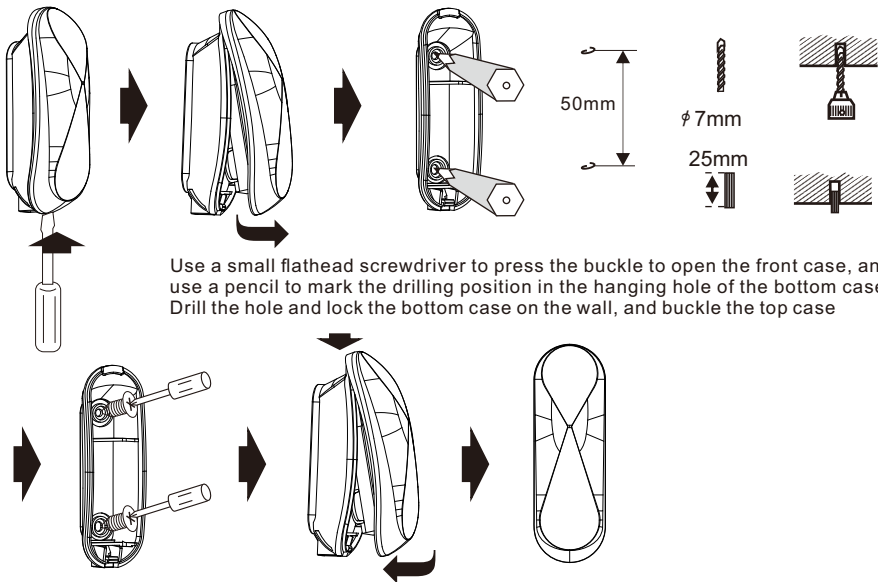
## Parts & Function



## Battery Insatllation

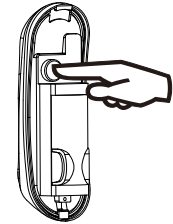


## Insatllation



## Pairing

1. Make the receiver into the pairing mode follow the receiver manual
2. Press the test button once on the transmitter



## Operation

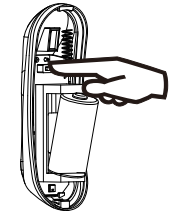
Install the temperature and humidity sensor at the location where the temperature and humidity need to be monitored. The sensor will report the temperature and humidity once every 30 minutes

## Battery low indication

Once the transmitter unit detect battery voltage is low, The battery low information will be sent to the receiver for display

## Code Conflict

If the transmitter coding is the same as another transmitter you must change the code. When you have changed the code re-pair the transmitter is needed. Open the cover, Open the cover. Press and hold the test button, insert the battery whilst holding the button for 5 seconds. The LED will flash 5 times when a new code is generated



This equipment has been tested and found to comply with the limits for a Class B digital device, pursuant to part 15 of FCC Rules. These limits are designed to provide reasonable protection against harmful interference in a residential the installation. This equipment generates, uses and can radiate radio frequency energy and, if not installed and used in accordance with the instructions, may cause harmful interference to radio communications. However, there is no guarantee that interference will not occur in a particular installation. If this equipment does cause harmful interference to radio or television reception, which can be determined by turning the equipment off and on, the user is encouraged to try to correct the interference by one or more of the following measures:

- \* Reorient or relocate the receiving antenna.
- \* Increase the separation between the equipment and receiver.
- \* Connect the equipment to an outlet on a circuit different from that to which the receiver is connected.

This device complies with part 15 of the FCC rules. Operation is subject to the following two conditions: (1) This device may not cause harmful interference, and (2) this device must accept any interference received, including interference that may cause undesired operation.

**Note: Modifications to this product will void the user's authority to operate this equipment.**

