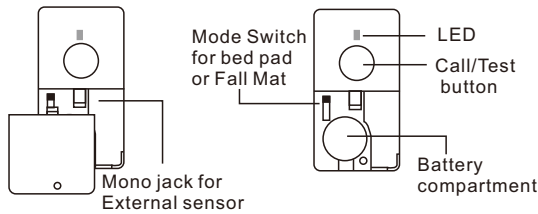


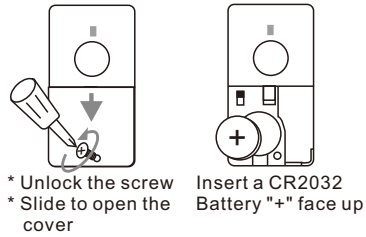
USER MANUAL

SPX-1000

Part & Function

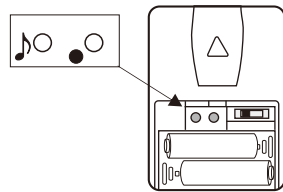


Battery installation



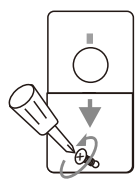
CODE PAIRING & MELODY SELECTION

- Step 1: Insert battery to the transmitter to be used (Sensor Pad Transmitter).
 Step 2: Insert batteries to the pager
 Step 3: Enter pairing mode for receiver (pager unit). Press and hold the zone select button ● for 3 seconds. The LED #1 will flash.
 Step 4: Press the ● button again to move to the zone you wish to pair with. Press 🎵 melody selector to scroll through the melodies. Once you hear your preferred melody, do not press again as it is now selected.
 Step 5: Once the zone and melody are selected with the zone icon flashing, trigger the transmitter by pressing the test button once to pair. If successful, the receiver (pager) will generate a short tone. Press the ● button to exit pairing mode, the system is ready to use.



Code Conflict

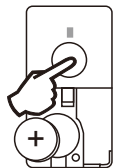
If the sensor pad transmitter coding is the same as another transmitter you must change the code. When you have changed the code re-pair the sensor pad transmitter.



Open the cover

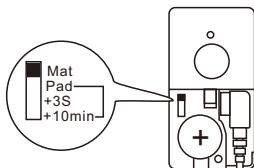


Remove the battery



Press and hold the test button, insert the battery whilst holding the button for 5 seconds. The LED will flash 5 times when a new code is generated

Setting



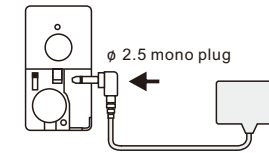
Open the battery cover and slide the switch to pad or mat position

- Mat: for fall mat (normal open)
- Pad: for Bed pad or chair pad (normal close)
- +3S: Pad mode with 3 seconds delay
- +10min: Pad mode with 10 minutes delay.

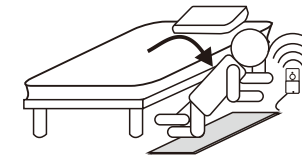
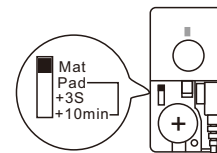
OPERATION

Connection

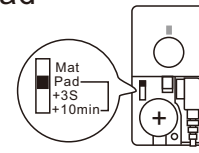
1. open the battery cover
2. Connect the pressure pad to the transmitter
3. close the battery cover



Mat



The transmitter will send out the alert signal to the receiver, when some step on (fall on) the mat Pad



when the patient left the mat, the transmitter will send an alert signal to the receiver.

Pad Delay Mode

To prevent false trigger. you can slide the mode switch to Pad+3S or Pad + 10min position. When the sensor is triggered, The delay timer will start..When timer is over, the sensor will send the alert signal to ring the receiver . Press the Call/Test button once can stop the timer after trigger. That mean the sensor will return to standby mode and do not ring the receiver.

** The sensor pad transmitter can be connected to other type of sensor such as a switch.

Temporarily cancel the CALL function

Press and hold the Call/Test button for 6 seconds, the LED will blink 4 time to indicate the call function is cancelled. To recall the call function press and hold Call/Test button 6 seconds again, the LED will blink 2 time to indicate the call function is recalled. Replace the batteries will recall the test function.

FCC Statement:

This equipment has been tested and found to comply with the limits for a Class B digital device, pursuant to part 15 of the FCC Rules. These limits are designed to provide reasonable protection against harmful interference in a residential installation. This equipment generates, uses and can radiate radio frequency energy and, if not installed and used in accordance with the instructions, may cause harmful interference to radio communications.

However, there is no guarantee that interference will not occur in a particular installation. If this equipment does cause harmful interference to radio or television reception, which can be determined by turning the equipment off and on, the user is encouraged to try to correct the interference by one or more of the following measures:

- * Reorient or relocate the receiving antenna.
- * Increase the separation between the equipment and receiver.
- * Connect the equipment to an outlet on a circuit different from that to which the receiver is connected.

This device complies with part 15 of the FCC rules. Operation is subject to the following two conditions: (1) This device may not cause harmful interference, and (2) this device must accept any interference received, including interference that may cause undesired operation.

Note: Modifications to this product will void the user's authority to operate this equipment.

