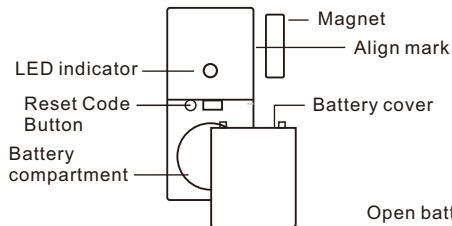


## Parts and Function



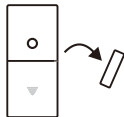
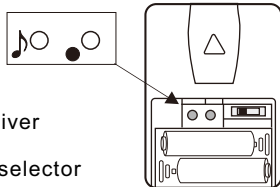
## Battery Installation

Open battery cover  
Insert the CR2032 battery

## Code Matching & Melody Selection

The magnetic sensor works with the receiver (chime)  
And must be paired before using

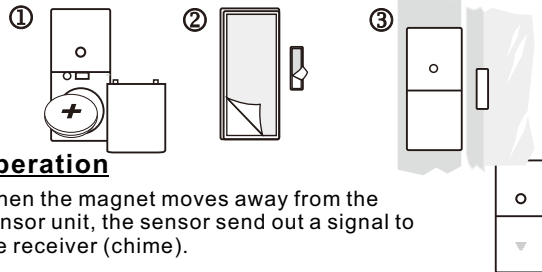
- Step 1: Insert batteries to the sensor.
- Step 2: Insert batteries to the receiver (chime).
- Step 3: Enter pairing mode for receiver (chime unit).  
Press and hold the ● zone selector button 3 seconds.  
The LED #1 will flash.
- Step 4: Press the ● button again to move to the zone you want to pair with.  
Press 🎵 melody selector to scroll through the melodies. Once you hear your preferred melody, do not press again as it is now selected.
- Step 5: Once you have selected the zone and melody, trigger the magnetic sensor by holding the sensor and magnet together, then move them apart.



If successful, the receiver will generate a short tone. Press the ● button to exit Pairing mode, the system is now ready to use.

## Installation

Install a CR2032 battery to the battery compartment.  
Stick the double sided tape on the back of the alarm unit, then remove the back paper of the double sided tape.  
Stick the alarm unit to the window/door frame and the magnet unit to the door/window by the side of the alarm unit..



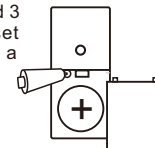
## Operation

When the magnet moves away from the sensor unit, the sensor send out a signal to the receiver (chime).

## Code Conflict

If the transmitter coding is the same as another transmitter you must change the code. When you have changed the code re-pair the transmitter is needed.

Press and hold 3 seconds to reset the code using a pen.



## CAUTION

RISK OF EXPLOSION IF BATTERY IS REPLACED BY AN INCORRECT TYPE. DISPOSE OF USED BATTERIES ACCORDING TO THE INSTRUCTIONS

## FCC Statement:

This equipment has been tested and found to comply with the limits for a Class B digital device, pursuant to part 15 of the FCC Rules. These limits are designed to provide reasonable protection against harmful interference in a residential installation. This equipment generates, uses and can radiate radio frequency energy and, if not installed and used in accordance with the instructions, may cause harmful interference to radio communications. However, there is no guarantee that interference will not occur in a particular installation. If this equipment does cause harmful interference to radio or television reception, which can be determined by turning the equipment off and on, the user is encouraged to try to correct the interference by one or more of the following measures:

- Reorient or relocate the receiving antenna.
- Increase the separation between the equipment and receiver.
- Connect the equipment to an outlet on a circuit different from that to which the receiver is connected.

This device complies with part 15 of the FCC rules. Operation is subject to the following two conditions: (1) This device may not cause harmful interference, and (2) this device must accept any interference received, including interference that may cause undesired operation.

**Note: Modifications to this product will void the user's authority to operate this equipment.**

