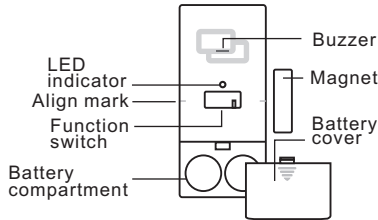


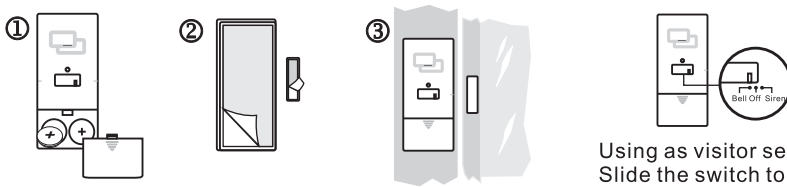
**Parts and Function**



**Installation**

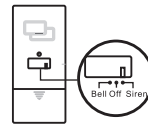
**Using as a window or door alarm**

1. Install two CR2032 battery to the battery compartment.
2. Remove the back paper of the double side tape on the back of the unit.
3. Stick the alarm unit to the window /door frame and magnet unit to the window/door.



Using as visitor sensor:  
Slide the switch to bell position.

- When the magnet moves away from the alarm unit, the Alarm or bell will active.
- **Alarm mode**  
The alarm sound will auto turn off within 15 seconds and sound again 30 seconds later if the door/window does not close.
- **Bell Mode**  
The bell will generate a Ding Dong tone and sound again 30 seconds later if the door does not close.



Using as door/ window alarm:  
Slide the switch to siren position.

**Wireless function**

This device will send out a wireless signal to the main unit before the Ding dong tone or siren sound.

**Batter low:**

When the battery is low voltage, the LED will blink every 5 seconds. The unit continues to operate until battery dead. You must replace the battery as soon as possible.



**Statement according to FCC part 15.19:**

This device complies with Part 15 of the FCC Rules. Operation is subject to the following two conditions: (1) this device may not cause harmful interference, and (2) this device must accept any interference received, including interference that may cause undesired operation.

**Statement according to FCC part 15.105:**

NOTE: This equipment has been tested and found to comply with the limits for a Class B digital device, pursuant to Part 15 of the FCC Rules. These limits are designed to provide reasonable protection against harmful interference in a residential installation. This equipment generates, uses and can radiate radio frequency energy and, if not installed and used in accordance with the instructions, may cause harmful interference to radio communications. However, there is no guarantee that interference will not occur in a particular installation. If this equipment does cause harmful interference to radio or television reception, which can be determined by turning the equipment off and on, the user is encouraged to try to correct the interference by one or more of the following measures:

- . Reorient or relocate the receiving antenna.
- . Increase the separation between the equipment and receiver.
- . Connect the equipment into an outlet on a circuit different from that to which the receiver is connected.
- . Consult the dealer or an experienced radio/TV technician for help.

**Statement according to FCC part 15.21:**

Modifications not expressly approved by this company could void the user's authority to operate the equipment.