

Attestation of Similarity



The **INID XS** reader product family consists of different models that incorporate an identical main PWA (**NGRP-XS**) that has integral: Power Section, I/O Section, Digital Processing Section, HF Section and Antenna, LF Section and Antenna and Keyboard Section. The base model (5045C) incorporates all sections. Through selective component placement the HF, LF and PIN sections may be removed to create five derived models.

The integral I/O Section of the main PWA is equipped with two interfaces that are software selectable. The main board is placed within different plastic enclosures that do not impact compliance for Safety, Radio, Emissions and Immunity requirements. In addition, other PWA's may be added to the main PWA integral to the plastic enclosure to add functionality to the device (e.g. a SAM interface, biometrics).

In cases where the basic geometries may affect compliance, prescans are performed in order to identify the worst case model. All Engineering justifications and/or compliance impacts are addressed within the report in the form of additional testing and/or notes.

MultiSmart XS					
Model	HF	LF	Keypad	FCC ID	IC ID
5045C	13.56 MHz	134.078 kHz	Yes	YAB-MSXSRDR	8908A-MSXSRDR
5005C	13.56 MHz	134.078 kHz	X	YAB-MSXSRDR	8908A-MSXSRDR
SmartReader XS					
Model	HF	LF	Keypad	FCC ID	IC ID
5040C	13.56 MHz	X	Yes	YAB-SRXSRDR	8908A-SRXSRDR
5000C	13.56 MHz	X	X	YAB-SRXSRDR	8908A-SRXSRDR
SmartProx XS					
Model	HF	LF	Keypad	FCC ID	IC ID
5240C	X	134.078 kHz	Yes	YAB-SPXSRDR	8908A-SPXSRDR
5200C	X	134.078 kHz	X	YAB-SPXSRDR	8908A-SPXSRDR

Supporting product photos are on the following pages, under the signature below

Company Representative Signature:
Mark de Olde / Chief Technical Officer

August 8, 2016

Statement date:

Overweg 5
1713 HX Obdam
The Netherlands
T: +31 (0)226 450 009
F: +31 (0)226 450 030
E: info@inid-readers.com

C.of C.: KvK - 20158413
Rabobank: 1401.76.691
IBAN: NL11 RABO 0140 176691
SWIFT/BIC: RABONL2U
VAT: NL8211.34.589.B01
www.inid-readers.com

Attestation of Similarity



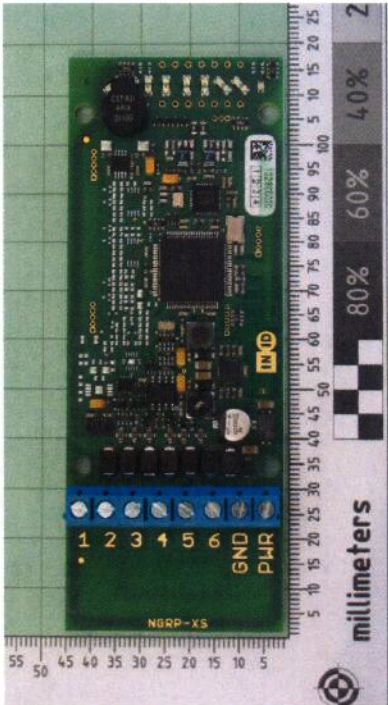
Product photos



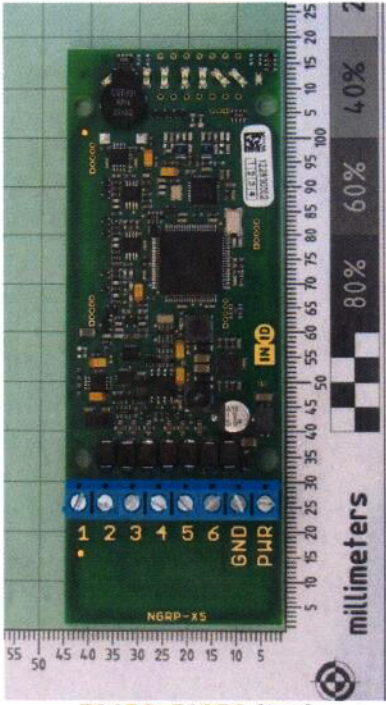
left: models 5000C, 5005C, 5200C

right: models 5040C, 5045C, 5240C

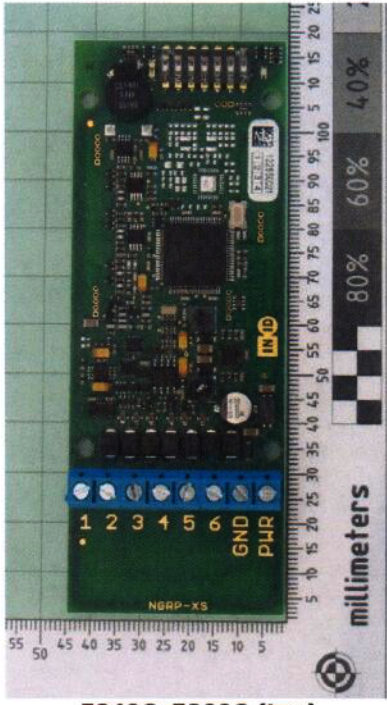
Attestation of Similarity



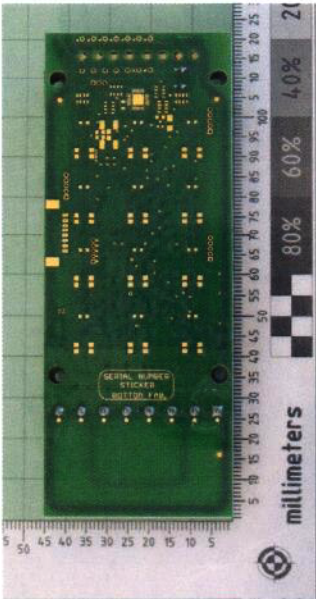
5040C, 5000C (top)



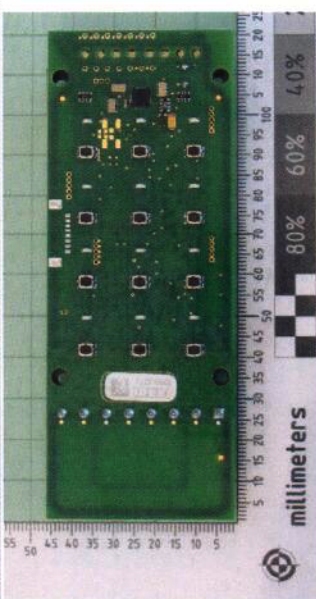
5045C, 5005C (top)



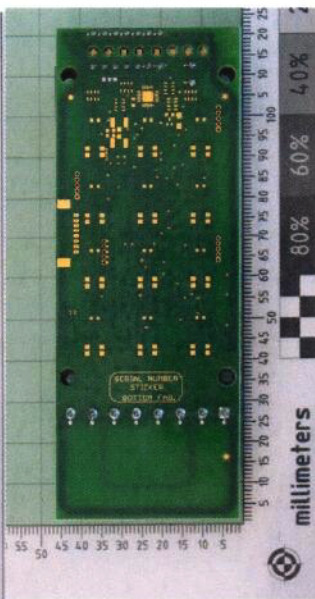
5240C, 5200C (top)



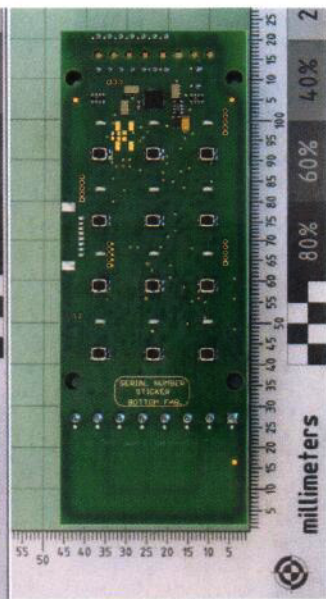
5000C, 5005C (bot)



5040C, 5045C (bot)



5200C (bot)



5240C (bot)