

Attestation of Similarity



The **INID SmartProx** reader product family consists of different models that incorporate an identical PWA (**NGRP-LF**) that has integral: Power Section, I/O Section, Digital Processing Section, RF Section and Antenna. The PWA has optional integral keyboard. The integral I/O Section of the PWA is equipped with one out of three possible interfaces. This board is then placed within different plastic enclosures that do not impact compliance for Safety, Radio, Emissions and immunity requirements. In cases where the basic geometries may affect compliance, prescans are performed in order to identify the worst case model. All Engineering justifications and or compliance impacts are addressed within the report in the form of additional testing and/or notes.

Models 5200, 5210, 5220, 5240, 5250 and 5260

Reader Type #1 - Mullion - with keyboard

Model number	Enclosure	PWA	Key-board	WG C&D TTL	RS485 RS422	RS232
5240	Plastic	NGRP-LF	Y	Y	-	-
5250	Plastic	NGRP-LF	Y	-	Y	-
5260	Plastic	NGRP-LF	Y	-	-	Y
Differences	These models only differ in the integral I/O section on the PWA.					

Reader Type #2 - Mullion - without keyboard

Model number	Enclosure	PWA	Key-board	WG C&D TTL	RS485 RS422	RS232
5200	Plastic	NGRP-LF	-	Y	-	-
5210	Plastic	NGRP-LF	-	-	Y	-
5220	Plastic	NGRP-LF	-	-	-	Y
Differences	1. These models only differ in the integral I/O section on the PWA. 2. The only difference with reader type #1 is the absence of the keyboard.					

Supporting product photos are on the following pages, under the signature below

A handwritten signature in black ink, appearing to read 'Mark de Olde', written over a horizontal line.

Company Representative Signature:
Mark de Olde / Chief Technical Officer

March 28th, 2014

Statement date:

Attestation of Similarity

Product photos



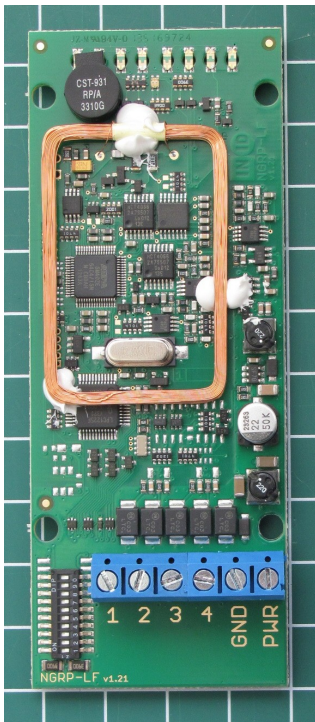
left: INID SmartProx reader, Model numbers: 5200, 5210, 5220.

right: INID SmartProx PIN reader, Model numbers: 5240, 5250, 5260.

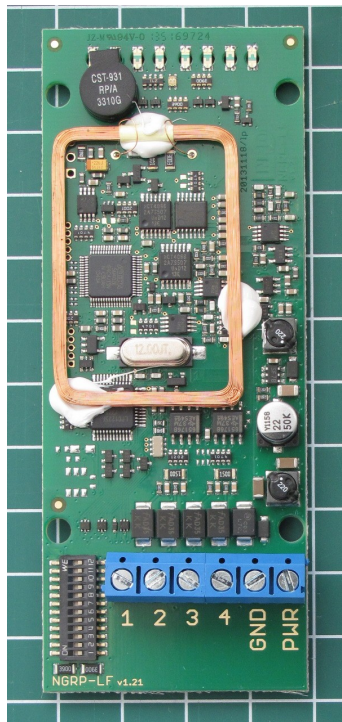
Attestation of Similarity



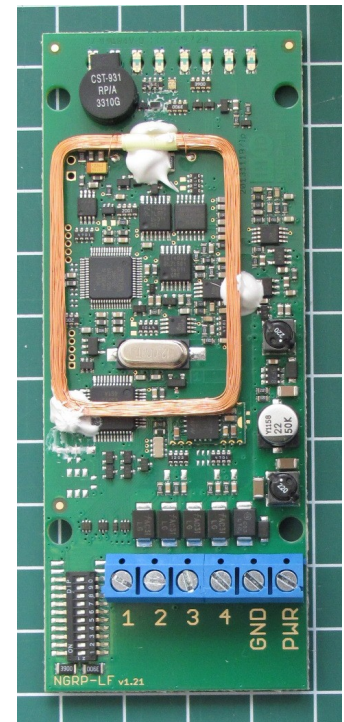
Connector side



model numbers 5200, 5240

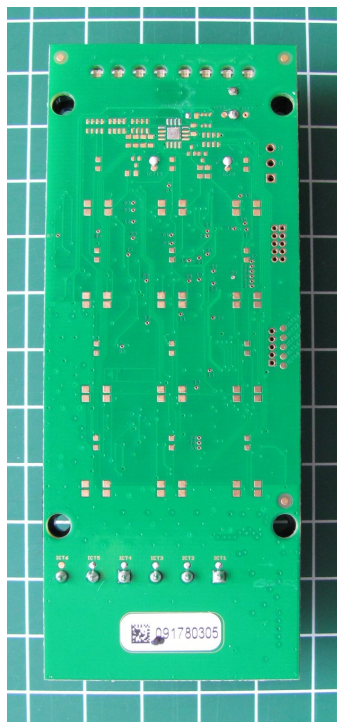


model numbers 5210, 5250

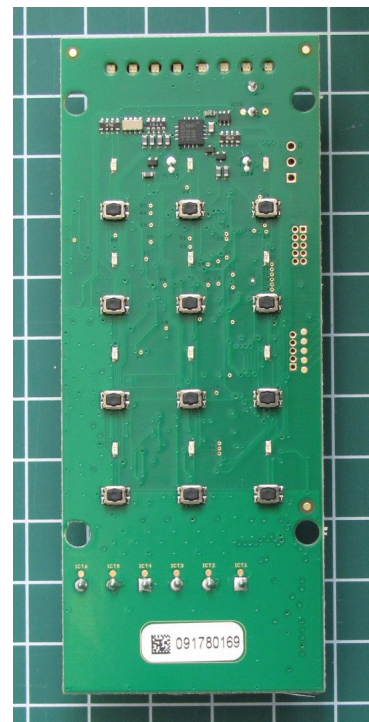


model numbers 5220, 5260

PIN pad side



model numbers 5200, 5210, 5220



model numbers 5240, 5250, 5260