

# **PT-X5.2**

## **User Manual**

Revision: 1.0.0  
Revision Date: 2014/06/26

## Table of Contents

<b>1.</b>	<b>Introduction.....</b>	<b>3</b>
<b>2.</b>	<b>Package Contents.....</b>	<b>3</b>
<b>3.</b>	<b>Hardware.....</b>	<b>4</b>
	3.1. LED Indications.....	4
<b>4.</b>	<b>Firmware Upgrade .....</b>	<b>5</b>
<b>5.</b>	<b>Appendix.....</b>	<b>11</b>
	5.1. Product Specification .....	11
	5.2. FCC Regulations.....	12

# 1. Introduction

Congratulations on your purchase of the PT-X5.2 asset tracking device! The PT-X5.2 is designed to be as easy to set up as it is to use. Hence, you can spend less time installation, and more time on the features you enjoy. There are no buttons, no controls and no inconvenience. Just charge the PT-X5.2 using the USB-to-Mini USB cable. The PT-X5.2 will send tracking data every 6 meters if the speed is less than 16km/h. If the speed is faster than 16km/h, then tracking data will be sent out every 10 seconds. This document is intended to guide you through the installation and firmware upgrade process.

# 2. Package Contents

When you open the package, please verify that you received the following items:

PT-X5.2 \*1



## 3. Hardware

### 3.1. LED Indications

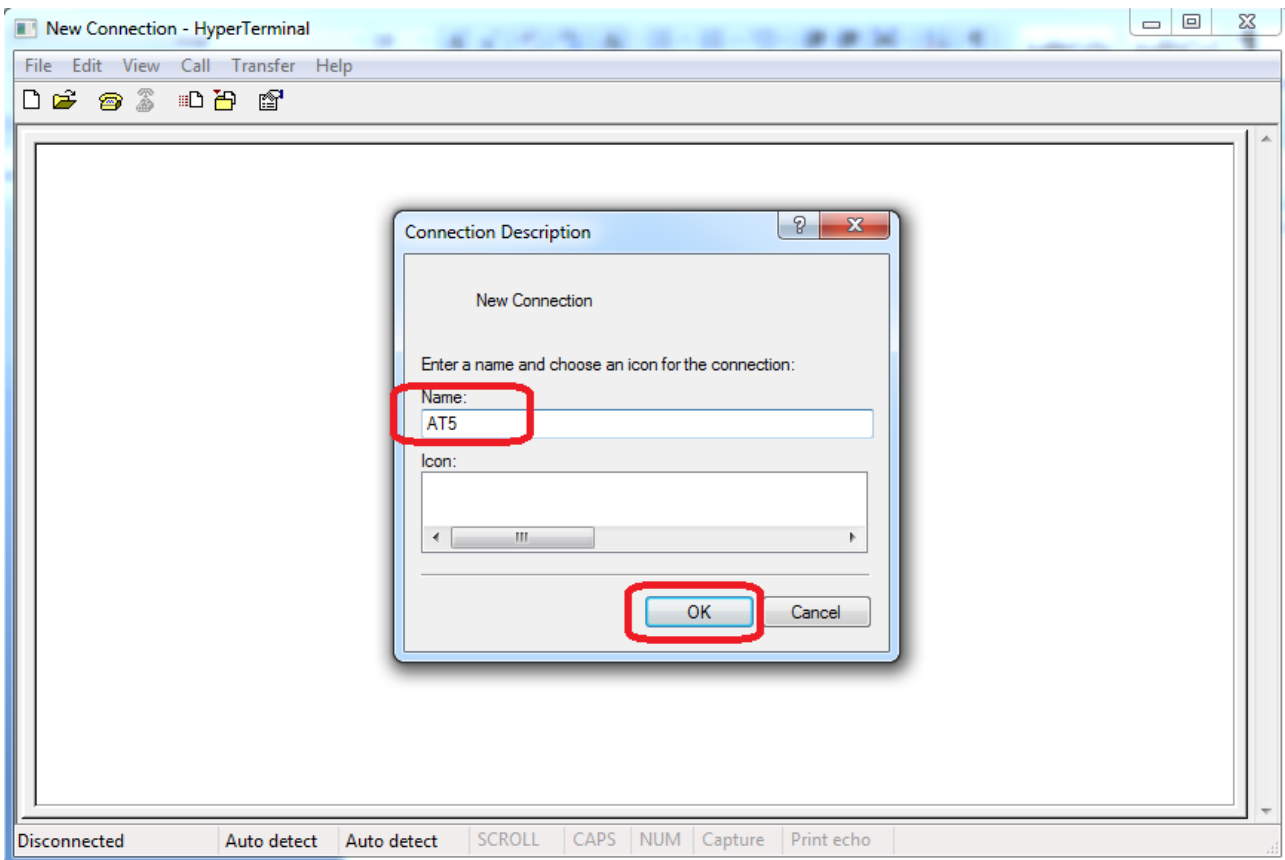
The following table describes LED states:

<b>Power Mode</b>	<b>CALL</b> <i>Yellow</i>	<b>ON</b> <i>Yellow</i>	<b>GPS</b> <i>Yellow</i>	<b>BAT</b> <i>Red</i>
Hibernate	OFF	OFF	OFF	Low Battery, less than 20% Slow Blink 250mS/10Sec  Low Battery, less than 5% OFF
Active / Battery	Blink when registering 500mS/1 Sec  Blink for missed call 250mS/2 Sec  Solid during call (incoming or initiated)	Slow blink 500mS/10Sec	Blink when locked 500mS/2 Sec	Low Battery, less than 20% Slow Blink 250mS/10Sec  Low Battery, less than 5% OFF
Active / Aux	Same as above for Active / Battery	ON solid	Same as above for Active / Battery	Fast Blink, during charge 500mS/2 Sec  OFF when charged

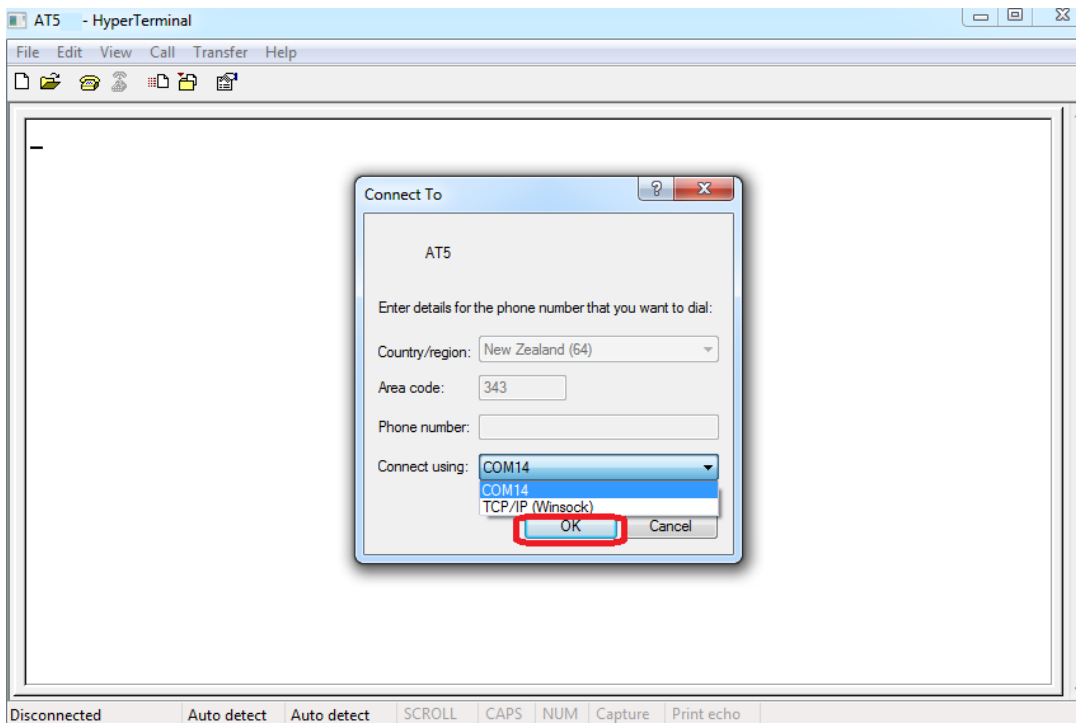
## 4. Firmware Upgrade

In this section, we are going to demonstrate how to do firmware upgrade on the PT-X5.2 over a USB connection. Before doing the upgrade, connect the USB cable between the Mini-USB port of the device and the USB port on your computer.

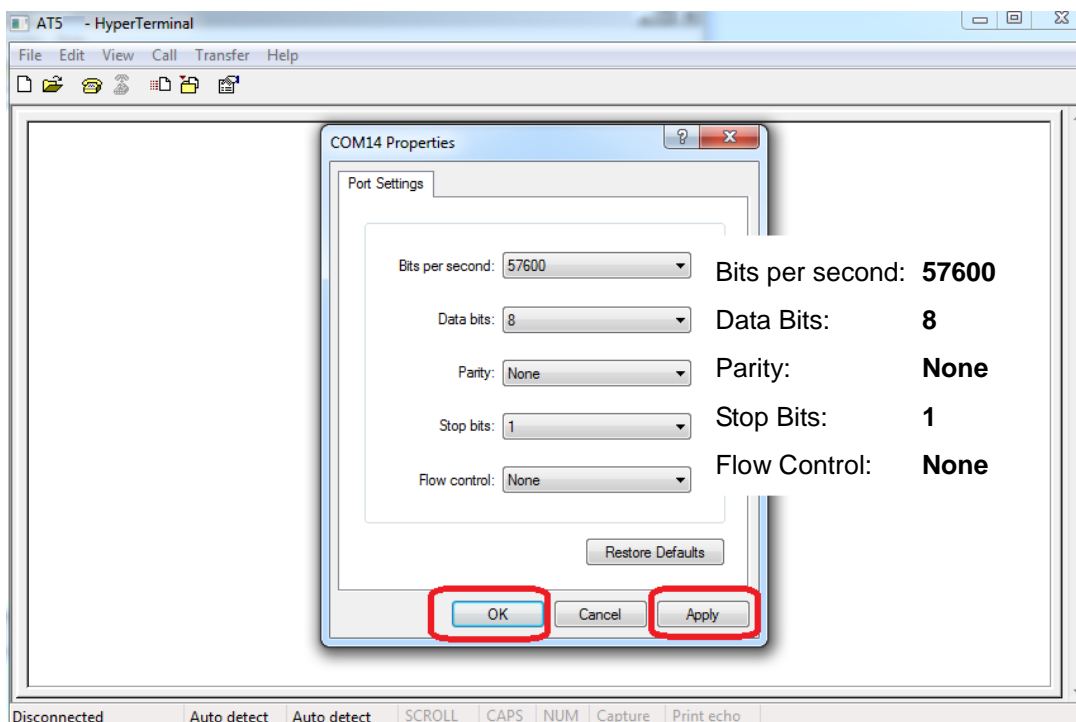
(1) Run **HyperTerminal**. Type a name for a new connection and click on the **[OK]** button.



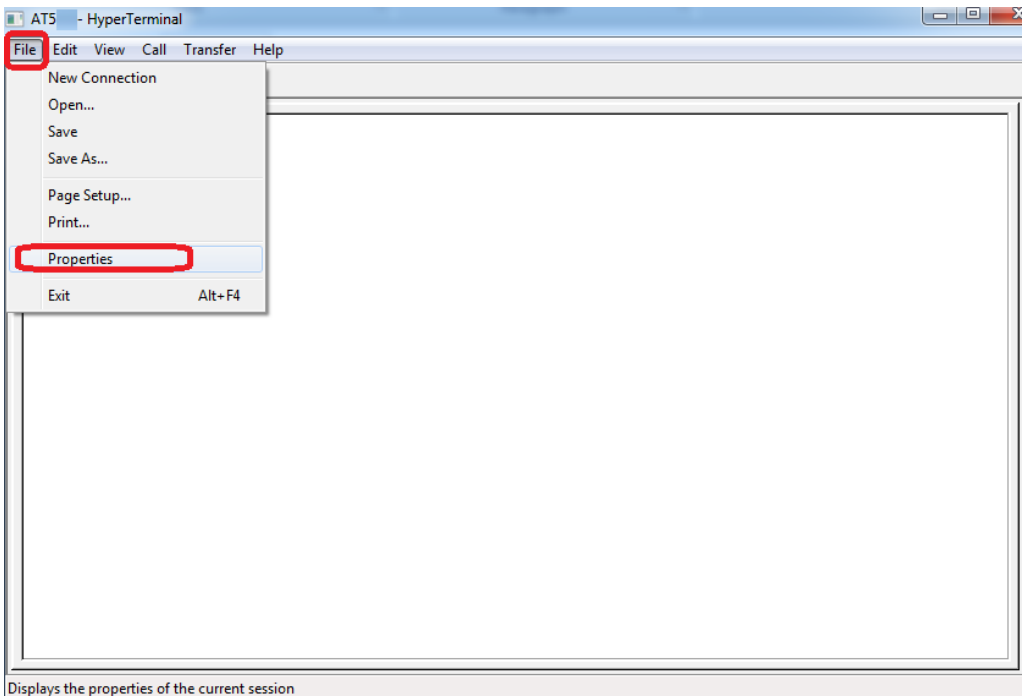
(2) Select the correct COM port from the drop-down list and click on the [OK] button.



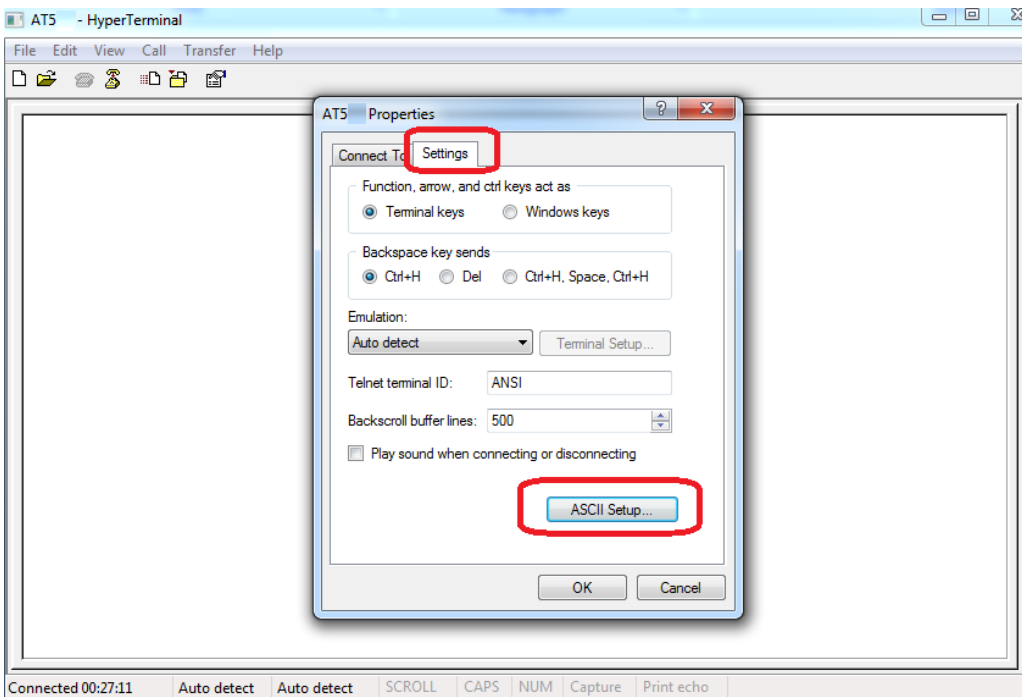
(3) Port Settings should be as follows. Click on the [Apply] button and then click on the [OK] button to close the Properties Window.



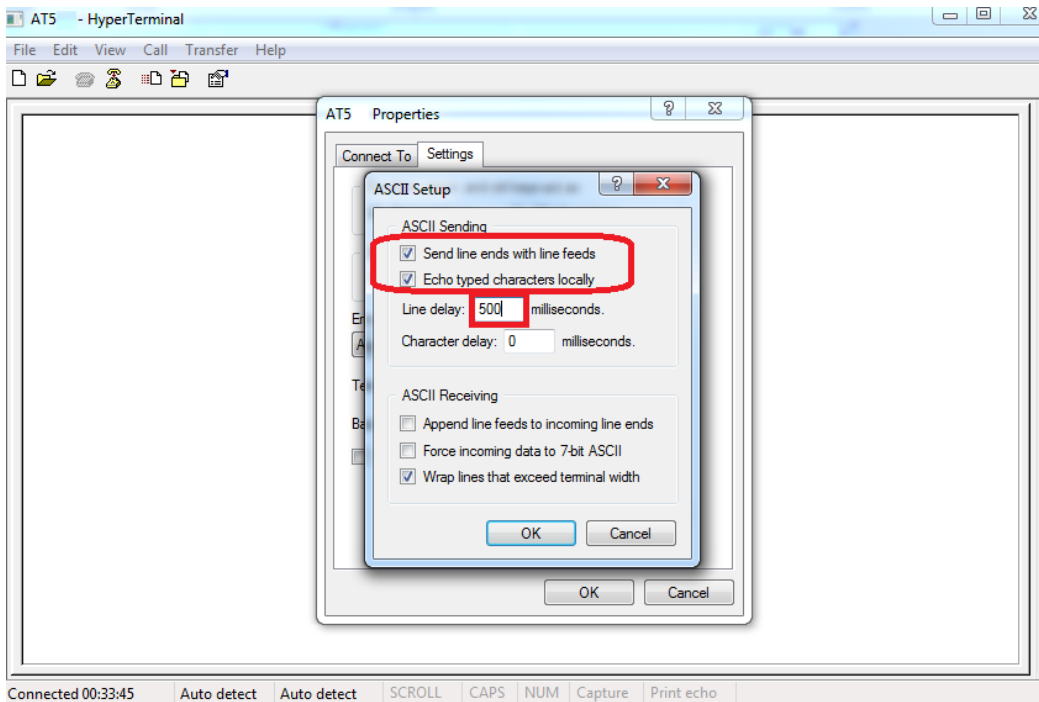
(4) Click on **[File]** and select **[Properties]**



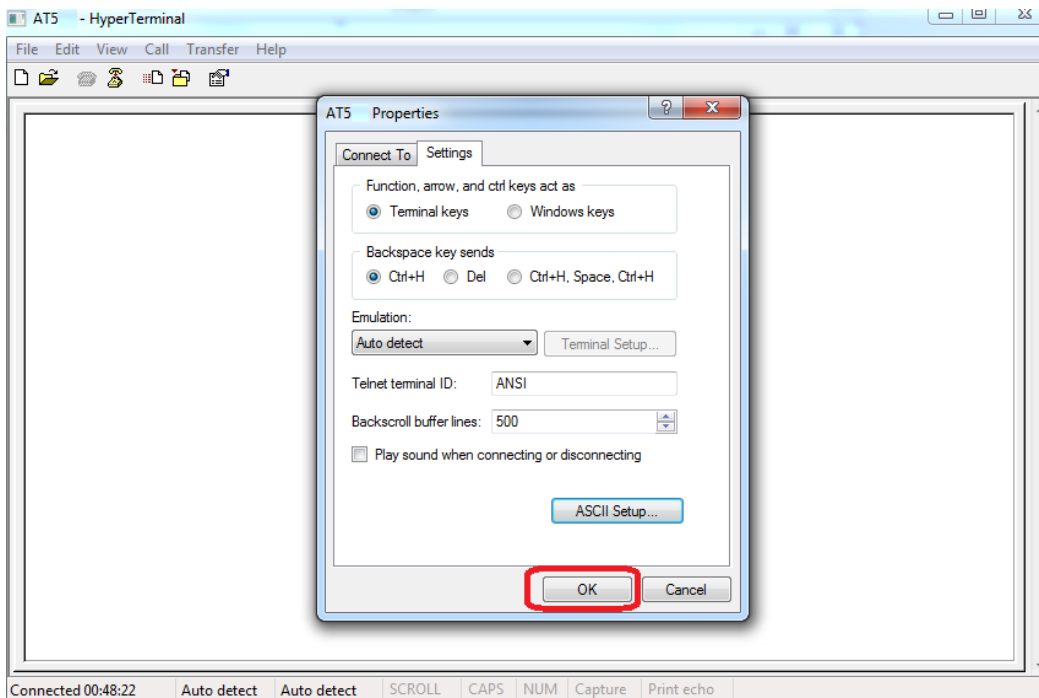
Click on **[Settings]** and click on the **[ASCII Setup...]** button.



(7) Check the following options and type 500 for the Line delay. Click on the **[OK]** button to close the ASCII Setup window.

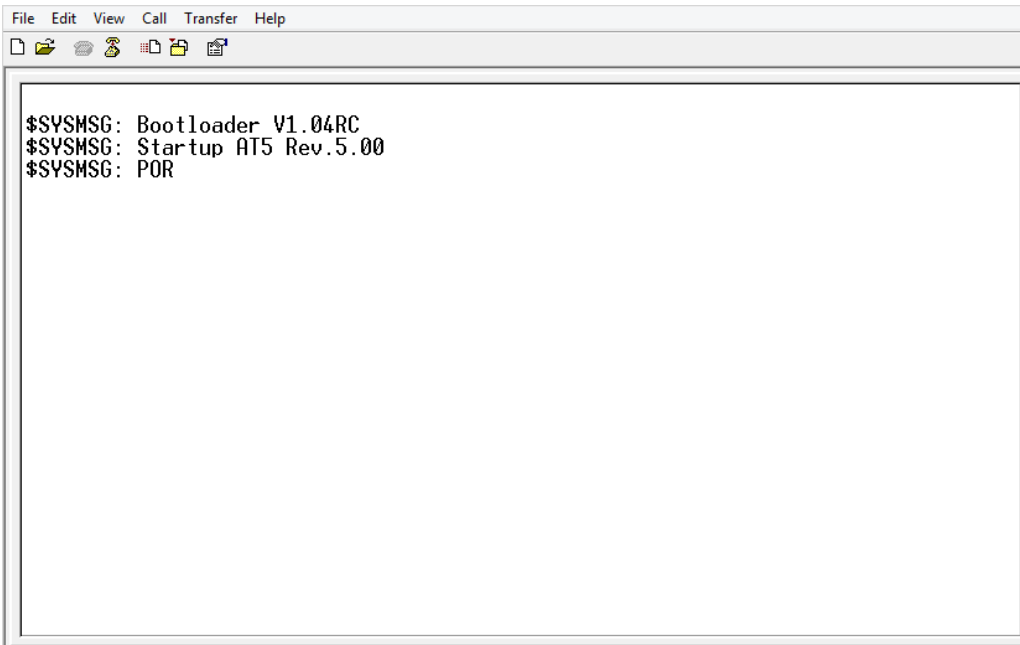


Click on the **[OK]** button to close the Properties Window.

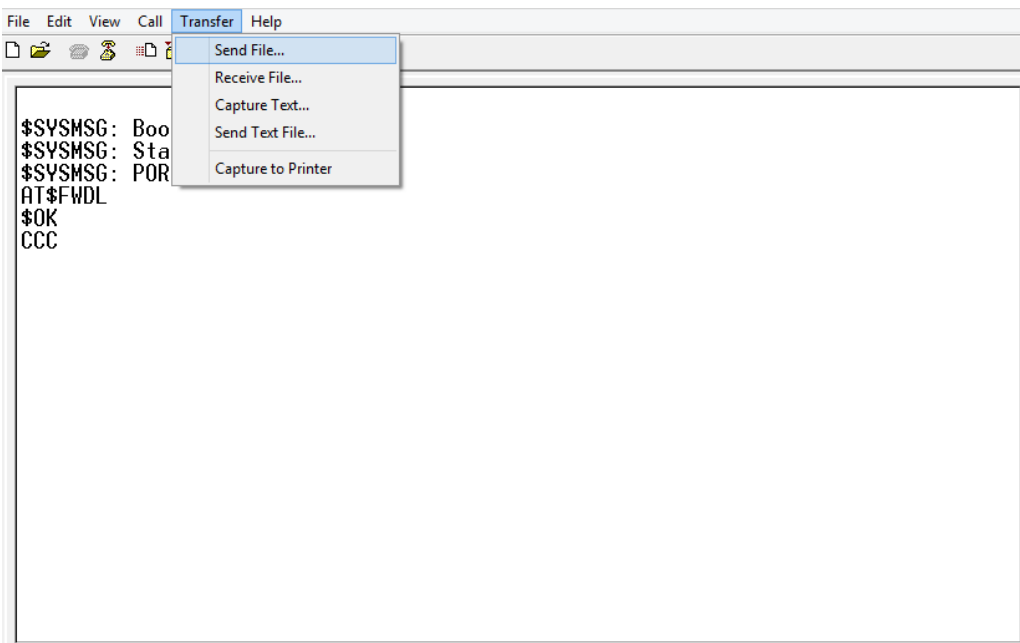




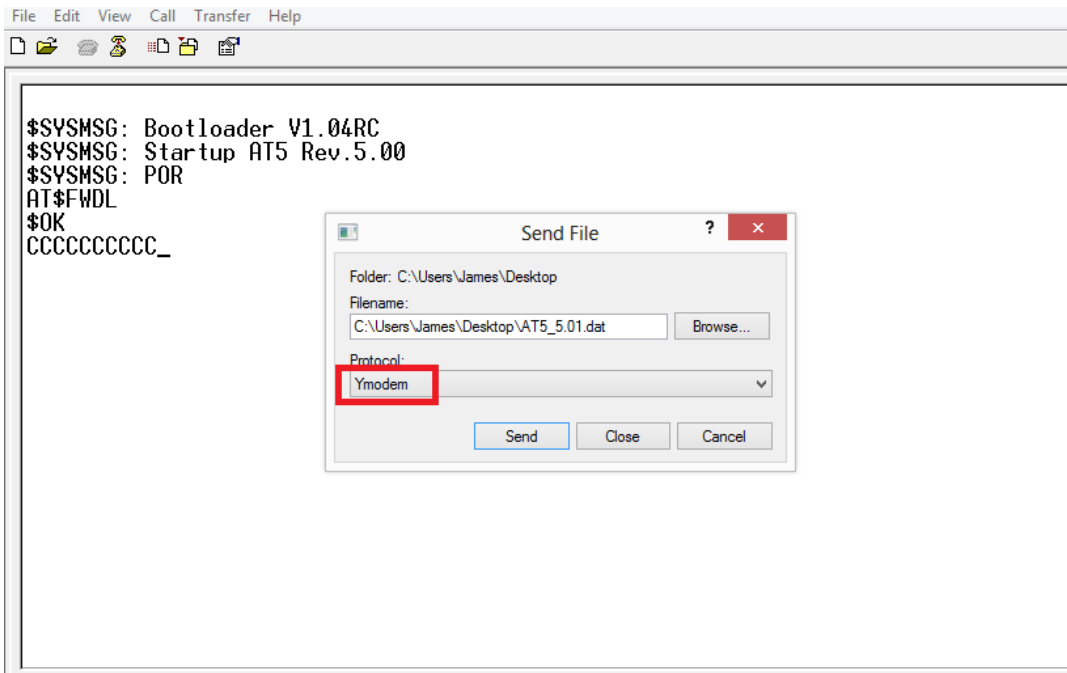
(8) Power ON the device and the startup message will be displayed on the screen.



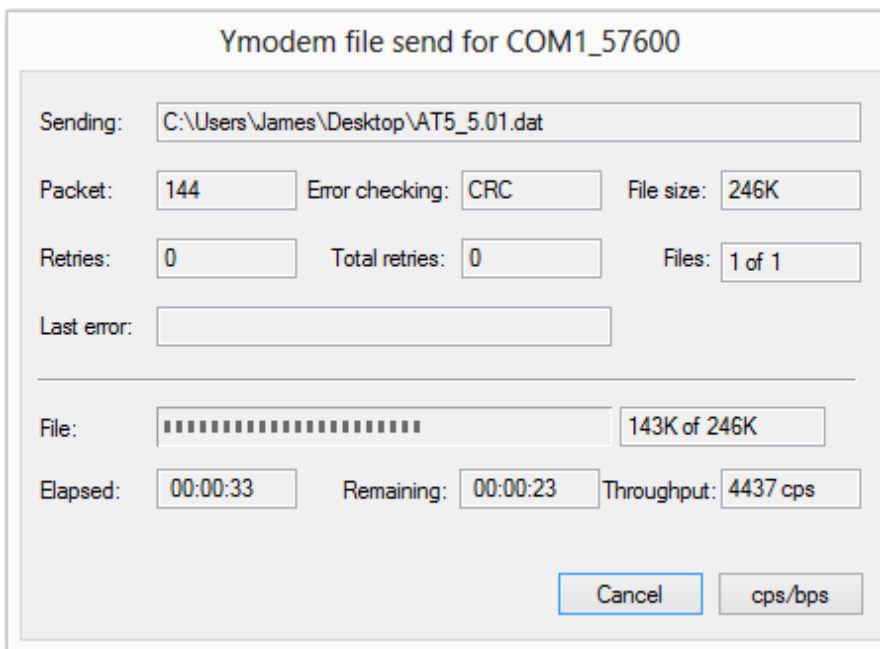
(9) Type the **AT\$FWDL** command and press the **[Enter]** key on your keyboard. Click on **[Transfer]** and select **[Send File...]**



(10) Click on the **[Browse]** button to browse the firmware file where you saved and select **Ymodem** from the Protocol drop-down list and click on the **[Send]** button.



(11) From the following snapshot, the firmware file is being uploaded.



## 5. Appendix

### 5.1. Product Specification

Hardware Specification	
Communication	GSM/GPRS/HSPA Dual-band (850/1900MHz)
Positioning	GPS/GLONASS
Antenna	Internal GPS and cellular antenna
Motion Sensor	Vibration sensor
Data Memory	2Mbytes for position data buffer
Power	Battery powered with USB charge control
Connector	Mini USB
RTC	Built in RTC(Real Time Clock)
LED Indicators	4 LEDs (Same as MiniMT indication)
Operating Temperature	-40~+85 degree

## 5.2. FCC Regulations

This device complies with Part 15 of the FCC Rules. Operation is subject to the following two conditions: (1) This device may not cause harmful interference, and (2) this device must accept any interference received, including interference that may cause undesired operation.

This equipment has been tested and found to comply with the limits for a Class B digital device, pursuant to Part 15 of the FCC Rules. These limits are designed to provide reasonable protection against harmful interference in a residential installation. This equipment generates, uses and can radiate radio frequency energy and, if not installed and used in accordance with the instructions, may cause harmful interference to radio communications. However, there is no guarantee that interference will not occur in a particular installation. If this equipment does cause harmful interference to radio or television reception, which can be determined by turning the equipment off and on, the user is encouraged to try to correct the interference by one of the following measures:

- ◆ Reorient or relocate the receiving antenna.
- ◆ Increase the separation between the equipment and receiver.
- ◆ Connect the equipment into an outlet on a circuit different from that to which the receiver is connected.
- ◆ Consult the dealer or an experienced radio/TV technician for help.

**FCC Caution:** Any changes or modifications not expressly approved by the party responsible for compliance could void the user's authority to operate this equipment.

This transmitter must not be co-located or operating in conjunction with any other antenna or transmitter.

### **Radiation Exposure Statement:**

This equipment complies with FCC radiation exposure limits set forth for an uncontrolled environment. This equipment should be installed and operated with minimum distance 20cm between the radiator & your body.