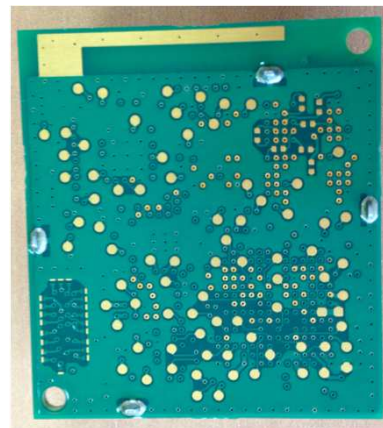


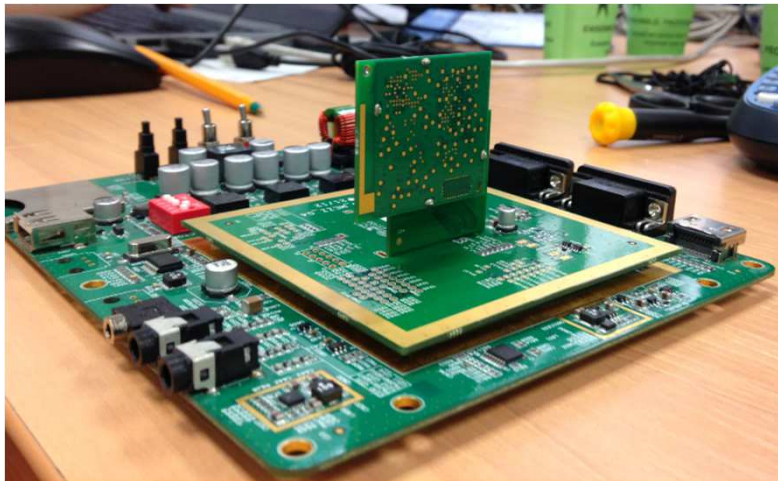
FC6000+internal antenna 3D radiation pattern : horizontal and vertical configurations



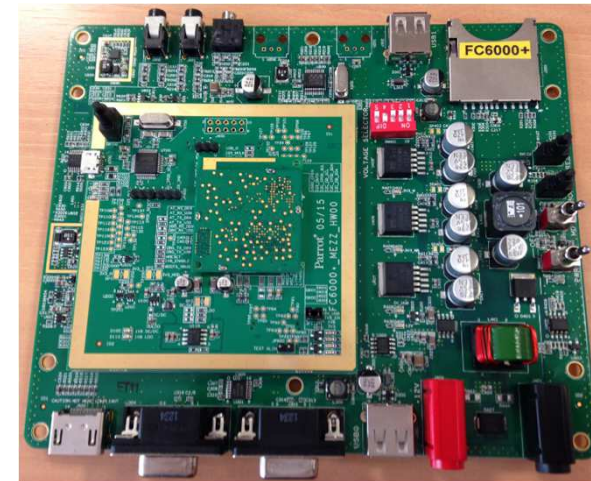
Description of the measured antenna



- The measured antenna is FC6000+ integrated Inverted F Antenna for 2.4GHz band
- The module is installed on a Workbench and mezzanine.
- Two configurations were tested: Vertical configuration, and Horizontal configuration
- The module was set in a permanent CW emission mode @ 2441MHz using WxHipHop command.



Vertical configuration



Horizontal configuration

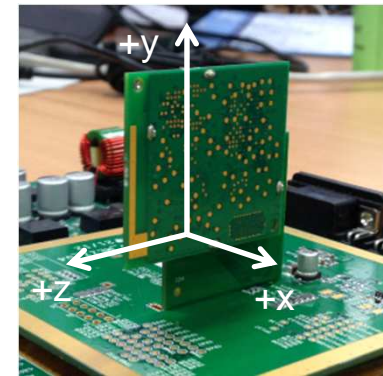
Measurement setup



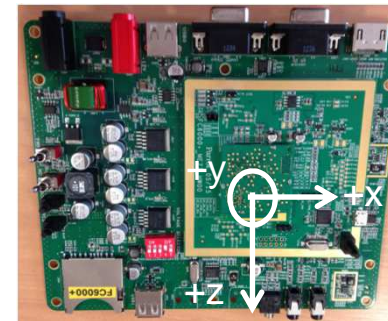
- The measurement was made at Parrot radio test laboratory, with Diagray3D system.
- Angular resolution is : 10°
- Measurement uncertainty : $\pm 1\text{dB}$



DiagRay3D



VIA

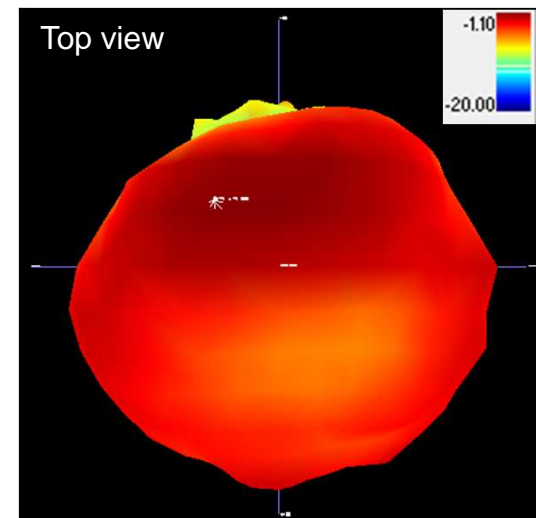
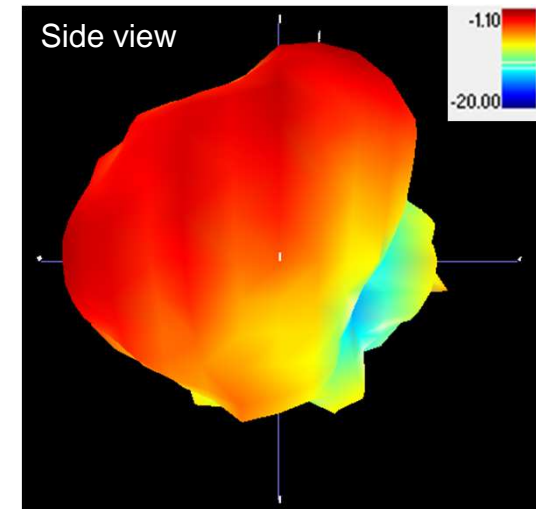
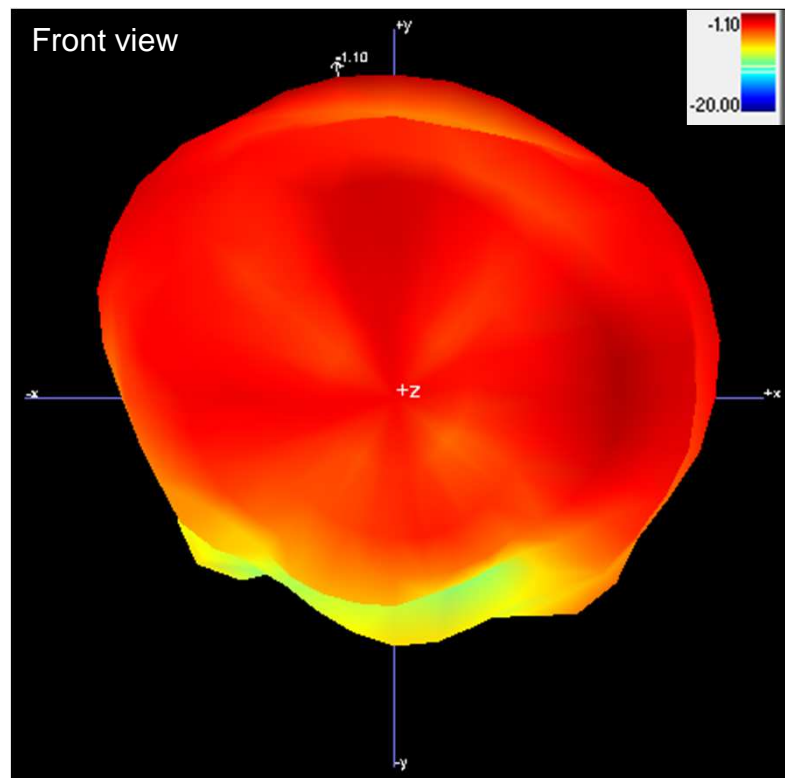


HIA

VIA: 3D radiation pattern @2441MHz



Max gain = -1.10dBi
Min gain = -20dBi
Mean gain = - 5.86dBi





www.parrot.com

PARROT S.A.
174, quai de Jemmapes
F-75010 Paris
T: +33 1 48 03 60 60