



# Portable Printer Operation Manual

(Full Version)



Please read this operation manual carefully before installing  
and using this product

## **Declaration**

---

Thank you for choosing TOEC products.

Please read the information included in the product package thoroughly and carefully before using. TOEC will not be liable for any damages caused by your failure to follow the instructions herein or by any misoperation of this product due to your misunderstanding of the content of this guide, but not including incorrect installation or damages which occur during operation caused by our qualified maintenance personnel.

TOEC has emended and checked this document carefully, but we do not ensure that there is no error or oversight.

TOEC devotes itself to improving products and promoting service quality. Thus, TOEC reserves the right to improve and modify the description and the software program of this product without any future notice.

This operation manual is aimed at helping you to use TOEC products properly, but doesn't intend to do any description for the software and hardware configuration of this product. For the configuration, please check the related contract (if you have) or consult your dealer. The pictures in this document are for your reference purpose only. If any of them are different from the actual product, please ignore the pictures.

# Contents

Safety Guide .....	1
NOTE .....	3
<b>1. Brief Introduction .....</b>	<b>5</b>
1.1. Packing List .....	5
1.2. Printer Appearance.....	6
1.3. Buttons.....	7
1.4. Indicator Lights.....	8
1.5. USB Connection .....	8
1.6. WIFI Connection .....	9
1.7. Connect the Printer to External Power.....	9
1.8. Use the Li-ion Battery (Optional ).....	9
2. Load Paper.....	10
2.1. Paper Size and Type.....	10
2.2. Load Paper .....	10
3. Install and Uninstall the Printer Driver.....	12
3.1. Install Local Printer Driver .....	12
3.2. Install WIFI Printer Driver.....	13
3.3. Change WIFI Print IP Address.....	14
3.4. Uninstall the Printer Driver.....	15
3.5. Print from Mobile Device.....	17
4. Use the Printer .....	21
4.1. Start the Printer .....	21
4.2. Print via USB.....	22
4.3. Print via WIFI.....	23
5. Brief Description of WIFI Function .....	24
6. Brief Introduction of Sleep Function .....	26
7. Troubleshooting .....	27
7.1. Printer Alarm Information .....	27
7.2. Troubleshooting Guide .....	28

8. Specifications.....30

# Safety Guide

1. Please read all the instructions and keep this operation manual in a handy place for future reference.
2. Before cleaning the printer, please unplug the power adaptor, take out the battery and cut off the power.
3. Do not use the printer near the water.
4. Do not place the printer in the unstable vehicle, on the unstable table or desk. Otherwise, the printer may not work normally or even fall, which will cause serious damage.
5. The optional battery for this printer is the lithium ion polymer rechargeable battery. Strictly prohibit putting the battery in high temperature environments, such as heating, near the fire or exposure to the sun. Putting the battery in the water, acid, alkaline or salty liquid is strictly prohibited. Also keep away from the rain. The charge time of the Li-ion battery should be no more than 12 hours. If the printer will not be used for a long period of time, remove the battery and store it in a cool place away from the direct sunlight.
6. This printer has been equipped with a three-core plug for power adapter, which has a grounding pin. This plug is only suitable for grounding type electrical outlet. This is a safety precaution. If the plug fails to fit, contact your electrician to change it. Do not remove or alter the grounding pin in any manner.
7. Do not put anything onto the power cord. Do not place the printer in an area where people might step on the power cord
8. If you use an extension cord with the printer, make sure that the

total ampere rating of the devices plugged into the extension cord does not exceed the cord's ampere rating.

9. Do not spill any liquid on the printer. Do not insert anything into the printer through the groove of the printer shell. Otherwise, these things may drop onto the circuit board and cause short-circuits. This may lead to fire or electric shock.

10. Use only a slightly damp cloth to clean the external of the printer. Do not clean the printer with benzene, alcohol, paint thinner or any corrosive, alkaline solvents. These solvents could cause the damage of the shell of printer.

11. Don't try to fix the printer by yourself without any instructions. Please send all the parts needed to repair to the professional maintenance personnel

12. When the following conditions occur, please pull out the plug from socket, remove the battery, and send the printer to professional maintenance personnel:

- The power cord is damaged or worn
- There is liquid in the printer
- The printer is exposed to the rain or water
- The printer falls off or the shell is damaged

## NOTE

1. This device complies with Part 15 of the FCC Rules. Operation is subject to the following two conditions:

- (1) This device may not cause harmful interference, and
- (2) This device must accept any interference received, including interference that may cause undesired operation.

2. Changes or modifications not expressly approved by the party responsible for compliance could void the user's authority to operate the equipment.

NOTE: This equipment has been tested and found to comply with the limits for a Class B digital device, pursuant to Part 15 of the FCC Rules.

These limits are designed to provide

reasonable protection against harmful interference in a residential installation. This equipment generates, uses and can radiate radio frequency energy and, if not installed and used in accordance with the instructions, may cause harmful interference to radio communications.

However, there is no guarantee that interference will not occur in a particular installation. If this equipment does cause harmful interference to radio or television reception, which can be determined by turning the equipment off and on, the user is encouraged to try to correct the interference by one or more of the following measures:

- - Reorient or relocate the receiving antenna.
- - Increase the separation between the equipment and receiver.
- - Connect the equipment into an outlet on a circuit different from that to which the receiver is connected.

- - Consult the dealer or an experienced radio/TV technician for help.

## **Marking and instructions**

**CE0700**

We declares that this device is in compliance with the essential requirements and other relevant provisions of Directive 1999/5/EC.

Operation temperature -10°C and 40°C



# 1. Brief Introduction

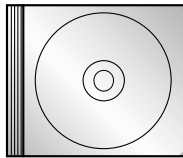
This section will give you a brief introduction of the printer appearance and the functions of every part.

## 1.1. Packing List

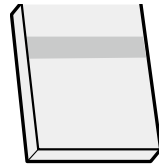
When you open the box, please make sure that it contains all the following items.



Printer



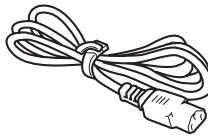
Installation CD



Operation manual



USB Cable

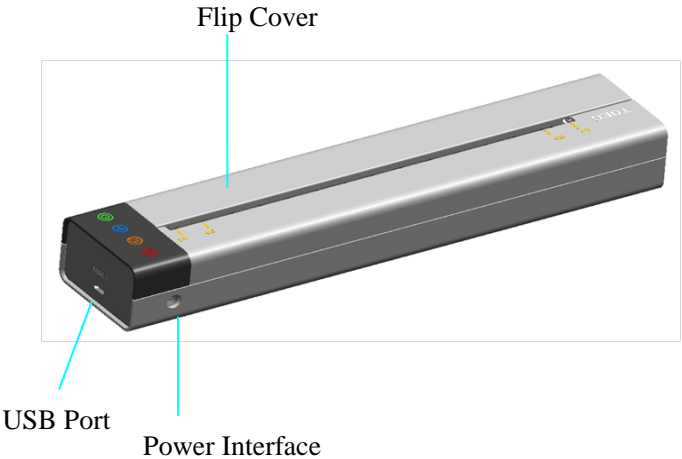
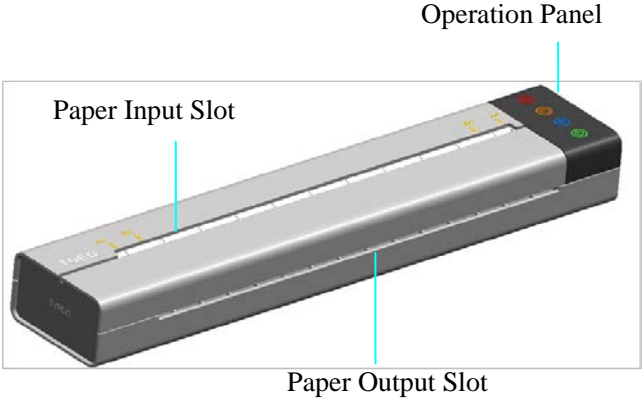


Power Adapter

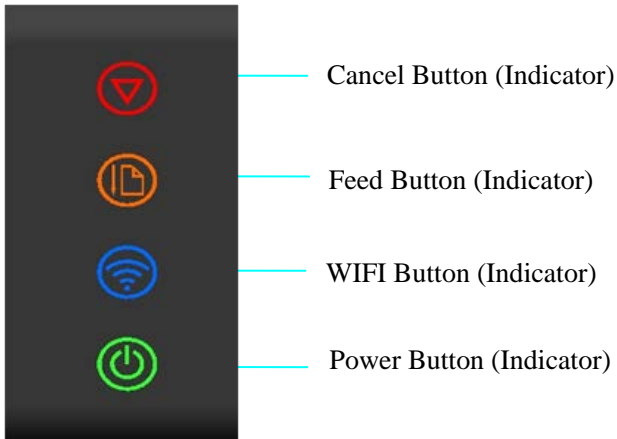


Li-ion Battery (Optional)

## 1.2. Printer Appearance




## Operation Panel



### 1.3. Buttons





The operation panel consists of four touch buttons (they are also indicator lights). Please operate this printer according to the following button functions.

Symbol	Function
	Cancel the print job in printing mode Clear the stored documents in standby mode
	Press and hold the button, and the printer will keep feeding paper till the button is released Press the button, and the printer will stop feeding till the paper is in place
	Press and hold the button to turn on /turn off the WIFI(See Section 5 for details) Press the button, and the printer will switch to the hotspot mode(See Section 5 for details)

	Press and hold the button to turn on /turn off the printer
---	--

## 1.4. Indicator Lights




The indicators light and flash to indicate the status of the printer. Please see the table below to recognize the status of printer according to the indicator lights.

Symbol	Status of Indicators
	Light is lit : standby
	Light is blinking : there is document stored or being transmitted
	Green light : normal
	Red light : alarm
	Yellow light is lit : paper is being ejected
	Yellow light is off : the ejecting of paper is completed
	Blue light is lit : succeed to connect
	Blue light is blinking : fail to connect
	Blue light is off : WIFI function is turned off
	Green light is lit : standby
	Green light is blinking: sleep mode

After installing the printer driver, your computer will pop up more detailed status of the printer and warning messages for your convenience.

## 1.5. USB Connection

Using the USB cable provided with the printer, you can connect the computer with printer.

		
USB Port of Printer	USB Cable	Connect to Computer

## 1.6. WIFI Connection

Please read Section 5 to find more details about WIFI connection settings.

## 1.7. Connect the Printer to External Power

Using the power adapter provided with the printer to connect the printer to a nearby electrical outlet, you can charge the printer or its battery.

## 1.8. Use the Li-ion Battery (Optional )

Connect the Li-ion battery to the power interface to charge your printer. When the indicator light on the battery shows “Under voltage”, please charge the battery with power adapter. When the battery is fully charged, the color of the indicator light will change.

Charge the Li-ion battery immediately after purchase. It takes 3 hours to charge the battery fully. The printer could print about 250 pages by using a new and fully-charged battery.

If the printer is connected with battery and battery is being charged, using the printer at this moment may shorten the service life of the battery.

For other considerations for using the Li-ion battery, please check the instructions sent with the battery.

## 2. Load Paper

This section will introduce the paper type and method of loading paper.

### 2.1. Paper Size and Type

**Note:** using unsuitable paper will cause problems like poor print quality, paper jam or over wearing of the printer, even will damage the printer. However, our warranty or service agreement doesn't cover damage like this. To get the best performance of this printer, we suggest you to use the type of paper described in this section.

Paper Type	Tattoo Transfer Printing Paper and Thermal Paper
Paper Size	A4 and B5

**Note:** weight, ingredient, texture and humidity of the paper are all important factors which will influence the performance of printer and the output quality.

### 2.2. Load Paper

Loading the paper properly will help you to prevent paper jam and make sure that there is no fault of the printing.

When put the paper into the printer, make sure that the paper needed to print faces down, and the printer will lead the paper to the right place automatically. Please try to vertically load the paper into the center of paper slot. Do not lead the paper to one side of slot or slant it. Be sure that the bottom of the paper is parallel with input slot. Otherwise, it will influence the printing result, and will cause damage to the paper.

**Note:** When storing paper, avoid high temperatures and humidity.  
Before loading the paper, do not fold, crease or wrinkle it.  
Before putting the tattoo transfer printing paper into the printer, please reserve the adhesive tape on the top of the paper, and remove the cover sheet below the adhesive tape (Do not tear the adhesive part on the top. Otherwise, the paper will be loosened and cannot be printed).

### 3. Install and Uninstall the Printer Driver

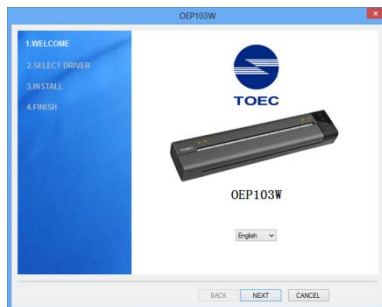
This section will take Win10 as an example to introduce how to install and uninstall the printer driver, and how to change the IP address.

Installing the printer driver needs the administrator account. Please log on as a user who has the administrator account. Terminate all running applications, and we suggest you to close the antivirus software. Before installing, use the matched USB cable to connect the printer with your computer, and then turn on the printer. When installing the printer driver, if the system automatically pops up the dialog box “Found the new hardware wizard”, please click “Cancel”. If your computer shows “A problem occurs during the hardware installation. Your new hardware may not be able to run normally”, just close the prompt message.

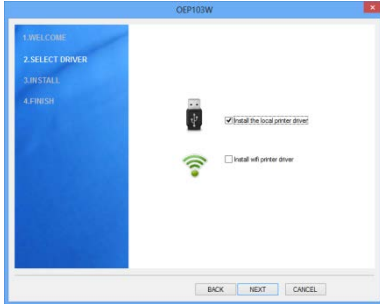
**Note:** please try not to change the name of computer after installing the printer driver. Otherwise, it will cause problems when installing and reinstalling the driver.

#### 3.1. Install Local Printer Driver

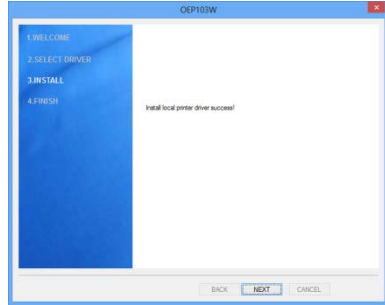
1. Insert the installation CD into the CD-ROM drive.
2. Read the files in the Installation CD. Double click “Setup.exe”. When the “Install/uninstall wizard” window pops up, click “Next”.



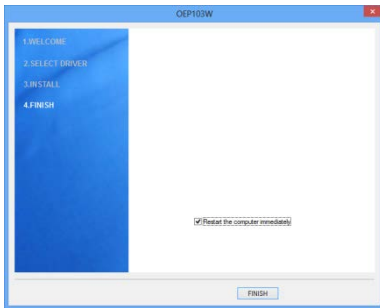




3. Check “Install the local printer driver ”, and then click “Next”.



4. Click “Next” after the successful installation.

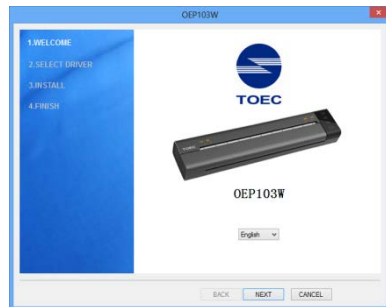


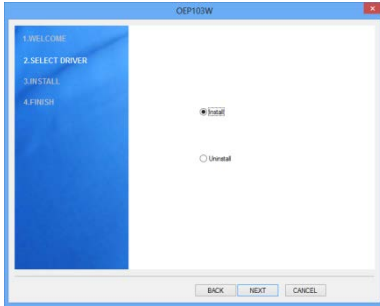
5. Click “Finish”, and the installation is completed. (We suggest you to restart the computer. )

## 3.2. Install WIFI Printer Driver

1.Insert the installation CD into the CD-ROM drive.

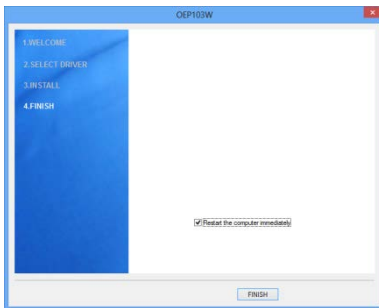
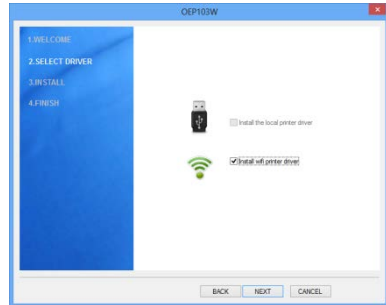
2.Read the files in the CD. Double click “Setup.exe”.When the “Install/uninstall wizard” Window pops up, click “Next”.





3. Choose “Install ” , and then click “Next”. If this window does not appear, skip this step .

4. Choose “Install WIFI printer driver ” , and click “Next”.



5. Click “Finish”, and the installation is completed. (We suggest you to restart the computer.)

### 3.3. Change WIFI Print IP Address

If you want to change the IP address of the printer, please use the IP\_SET tool in the installation CD.

1. Insert the installation CD into the CD-ROM drive.
2. Read the files in the installation CD. Double click “IP\_Set.exe”, and the dialog box “Parameter setting” pops up.



3.The WIFI printing supports two connecting modes: client mode and Hotspot mode (see Section 5 for details). Click client mode or Hotspot mode, and the corresponding informations will be shown.

If you have already installed WIFI driver and used WIFI printing, the informations of user name, password, authentication mode and IP address will be shown .

If the drive program has not been installed, the window “WIFI print driver has not been installed” will pop up.

Client mode includes two types: “Automatically obtain IP address” and “Use IP address below”. For the option of “Use IP address below”, IP address of device can be changed.



In Hotspot mode, the user name and password of WIFI network can be changed.

4. Input configuration information defined by user and click “Apply”, and the setting of WIFI print is completed.

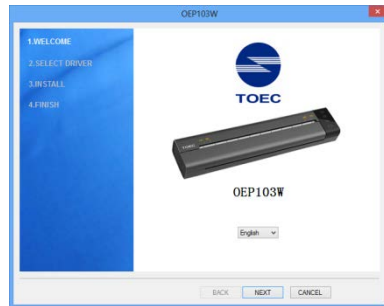
5.Click “Close”to exit.

### 3.4. Uninstall the Printer Driver

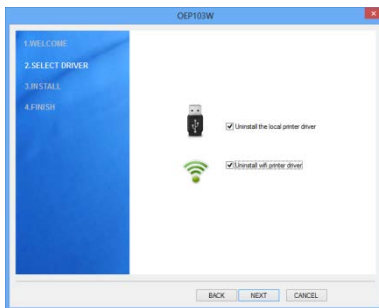
Uninstalling the printer driver needs the administrator account. Please log on as a user who has the administrator account. Terminate all

running applications, and we suggest you to close the antivirus software.

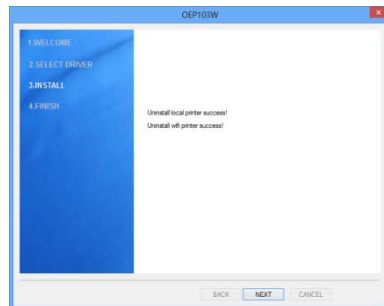
1. Read the files in the CD .  
Double click “Setup.exe”. When the “Install/uninstall wizard” window pops up, click “Next”.



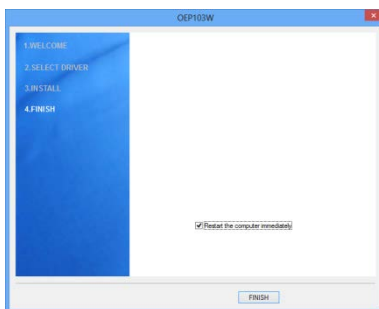
2. Chosee “Uninstall local printer driver” and “Uninstall WIFI print driver”, and click “Next”.



3. When the uninstallation is completed, click “Next” .



4. Click “Finish”, so the uninstallation is completed. (We suggest you to restart the computer .)



### **3.5. Print from Mobile Device**

If user uses peripheral equipment to print, the operating system of mobile device (e.g. Smartphone or Tablet computer) should be iOS9 or below, and Android 6.0 or below.

For Android operating system

User needs to download the corresponding mobile printing application “TOEC Printer” from the mobile device first. By connecting the printer to the mobile device through WIFI, the documents, pictures and other contents can be printed directly from the mobile device. Open “TOEC Printer” on the mobile device, click the button “Search for the printer”, select the corresponding printer to set the printing parameters, select the content from the main interface, and then the printing can be realized. For the whole process of printing, the operation is easy, convenient and humanized. “TOEC Printer” is available on our website as free download.

In the printing parameters settings, the setting for the printer is WIFI connection mode setting.

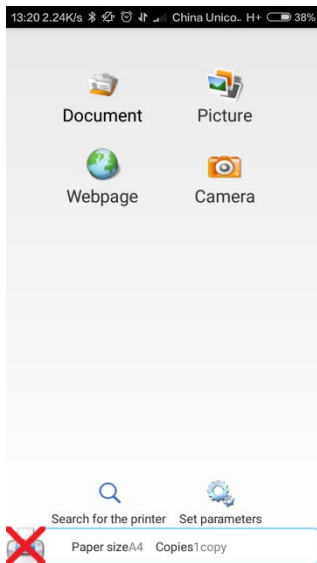


Figure a Main interface

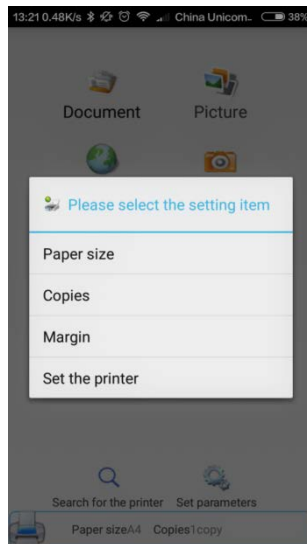


Figure b Printing parameters settings

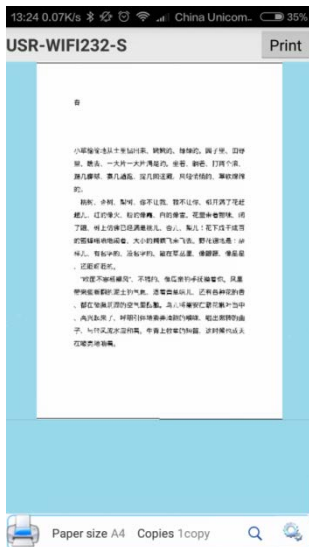


Figure c Print preview

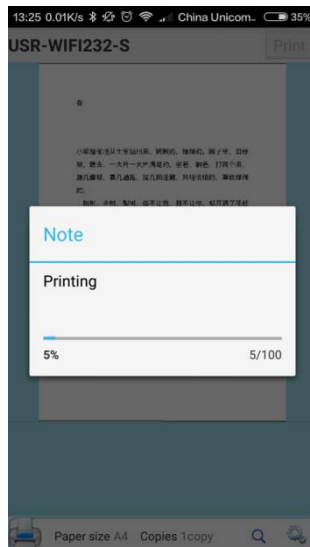


Figure d Printing

When select the hotspot mode, “TOEC Printer” will automatically

dis WIFI hotspot se ater.

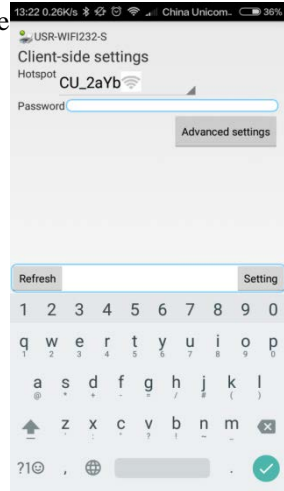
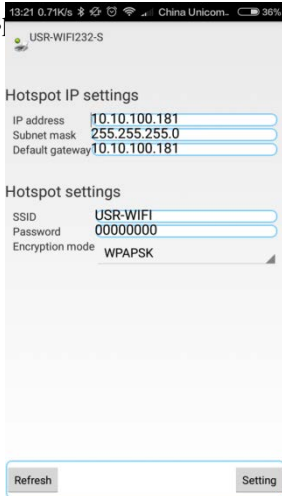


Figure e Hotspot mode settings      Figure f Client-side mode settings

When select the client-side mode, select the WIFI and then enter the password. If the name of network can't be found or want to set the WIFI configuration manually, click the button of the advanced settings and select the dynamic allocation IP and static allocation IP to do the suitable setting.

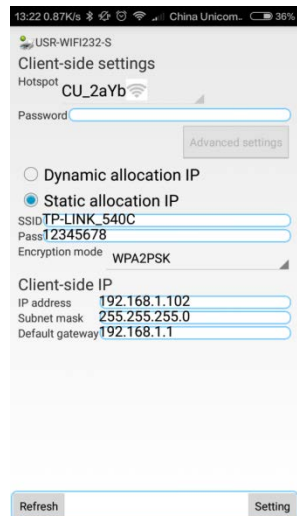
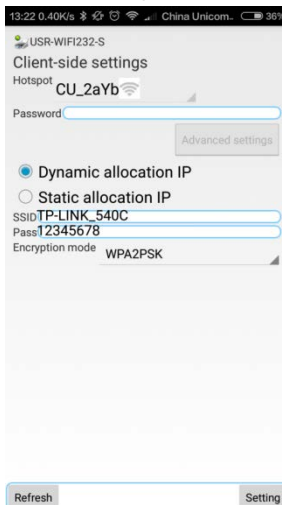


Figure g Dynamic allocation IP

Figure h Static allocation IP



## 4. Use the Printer

Before using this product to print the document, please read the Section One to Section Four carefully and install the driver of the printer.

Taking the Word under Win10 operating system as an example, we will introduce how to use the printer to print the document.

### 4.1. Start the Printer

1. Make sure that the power cord of the printer is connected correctly or the lithium battery is used properly.
2. Start the computer.
3. Start the printer and the indicator lights are lit. Wait for the paper feeding indicator light goes out, and then the printer is prepared to print.
4. Confirm that the printer driver has been installed correctly and it works normally.
5. Connect the printer to PC via USB or WIFI.
6. Put the paper into the printer till the printer automatically leads the paper to the right place.

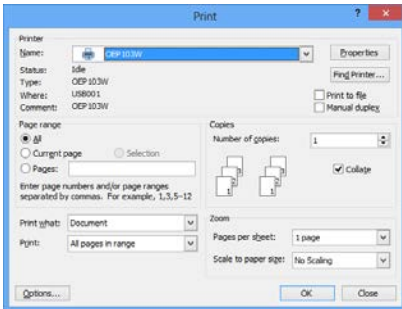
**Note:** please make sure to start the computer first, and then start the printer (if print via WIFI, please connect to the network first), or it may lead to the computer can't recognize the printer. If the computer can't recognize the printer, please restart the printer or reinsert USB cable or reconnect to WIFI.

## 4.2. Print via USB

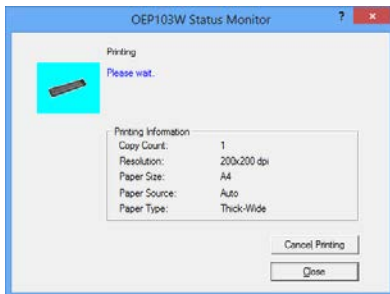
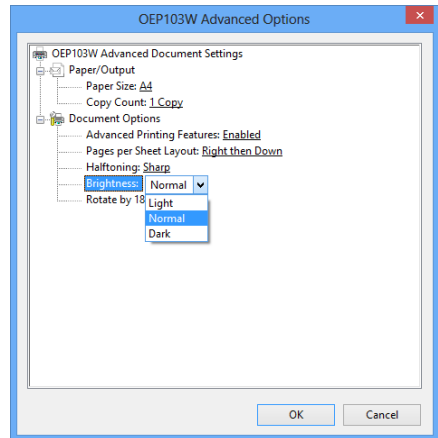
1. Open the document needed to print, and select “Print” in the “File” menu.



2. In the “Print” dialog box, click the “Name” in drop-down list box and select “OEP103W”.



3. Click “Properties”, select advanced option in the “Paper/Quality” tab in the dialog box, and select the brightness to change the light or dark effect of the printed document.



4. Set up the printing option and the number of copies, and click “OK” to confirm. The printer begins to print and the window of “OEP103W Status Monitor” pops

up on the computer.

5. If need to cancel the current print job, you can press the “Clear” button on the printer or click “Cancel printing” to stop the current print job in the window of “OEP103W Status Monitor”.

### **4.3. Print via WIFI**

When print via WIFI, please make sure the printer has already been connected successfully. Please select “OEP103W-WIFI” in the drop-down list box in the “Name” in “Print” dialog box, and other procedures are same with USB printing operation.

## 5. Brief Description of WIFI Function

For WIFI connecting of this printer, it can support two kinds of operating modes: client-side and hotspot.

Client-side: the printer is connected to the WIFI signal which is sent out by other equipment (e.g. router).

Before connecting, need to use WIFI-connect tool to configure the user name and password of connecting WIFI signal, and wait for



about 5 seconds to make sure that the printer has already been connected to the designated WIFI signal.

After the connection is successful, WIFI indicator light will be lit, and then connect the computer or mobile device to this WIFI signal. Then connecting of the printer or external device to do WIFI printing through client-side can be realized. If the printing is failed, please check that whether WIFI connecting is normal or not.

Hotspot: WIFI signal is sent out by the printer. The name of WIFI is toec. The password is 12345678 for default and it can be set by the IP\_SET tool in the installation CD (please see Section 3.3 for details).

If you want to use this mode to print, please make sure that the computer or mobile device directly connects to the WIFI signal of printer.

To switch between the client-side mode and the hotspot mode, it can be set by the IP\_SET tool in the installation CD or the options in the TOEC Printer.

**Note:** in hotspot mode, only can connect two(2) equipments. If try to

connect to the other equipment when two equipments are connected, the error will occur.

For turning on or turning off WIFI function or configuring WIFI information, it needs 5 seconds. At this moment, the WIFI indicator light will go out, and WIFI-connect interface or IP\_SET interface will be in the waiting state. During this period, please do not carry out any operations until the interface appears the information of successful configuration or failing configuration.

During the period of WIFI indicator light going out, WIFI function will become invalid.

## 6. Brief Introduction of Sleep Function

When there is no paper feeding, no data received and no operation in three minutes, the printer will be in sleep mode to reduce the power consumption. At this moment, only the indicator light of the power will blink and other indicator lights will go out. However, the printing data can still be received if connecting to the printer via USB, the computer will down send the print job to awake the printer automatically, and then the printer begins to work.

In sleep mode, if need to use WIFI printing or configure IP address, press any buttons on the operation panel to manually awake the printer (the duration for pressing the power button can't exceed one second, otherwise the printer will be turned off), and wait for about 5 seconds till the indicator light returns to normal, that is to say, the machine returns to the state of preparing for printing.

The duration for sleeping can be configured by software. The methods are shown as follows:

1. Click the operation panel in the start menu, select “Printer and other hardware”, select the portable printer in the “Printer and fax” folder, right click the printer attribute, and the dialog box of “OEP103W attribute” will pop up.

2. Click the tab “Printer setup”, select the suitable sleep time in the pull-down list of “Sleep time”, and click “Save” .



## 7. Troubleshooting

This section will introduce the printer alarm information and the help information for the troubleshooting.

### 7.1. Printer Alarm Information

Information on PC	Reason	Troubleshooting Method
<b>Low battery level</b>	The battery level is too low	- The battery level is too low to print. Please recharge it as soon as possible or turn it off.
<b>No paper</b>	There is no paper in the printer	- Please put the paper in the printer.
<b>Out of memory</b>	The printer is full of the stored documents.	- Press the clear key to empty the documents - Print the stored documents
<b>Communication error</b>	The printer is not detected	- Reinsert USB cable and reconnect WIFI - Restart the printer - Restart the computer
<b>Machine is overheating</b>	The temperature in the printer is too high	- Wait for a few minutes to print when the clear indicator light turns from red to green

**Note:** when use the printer at the high altitude, the machine overheating may occur more frequently due to a lower air density available to cool the printer.

## 7.2. Troubleshooting Guide

Trouble	Troubleshooting methods
Breakdown of machine and failure of keys	<ul style="list-style-type: none"> <li>- Check that whether the power cord of the printer is connected or not;</li> <li>- Check that whether the power switch of the printer is turned on or not;</li> <li>- Restart the printer after power off for 30 seconds</li> <li>- Please contact the serviceman if the problem still exists.</li> </ul>
The printer can't print documents	<p>USB Print:</p> <ul style="list-style-type: none"> <li>-Check the USB cable is connected correctly or not;</li> <li>- Check that whether the printer is in idle state or not;</li> <li>- Reinsert USB cable or restart the printer.</li> <li>- Please contact the serviceman if the problem still exists.</li> </ul> <p>WIFI print:</p> <ul style="list-style-type: none"> <li>- Check that whether the external device is on the same network of the printer or not</li> <li>- Check that whether the printer is in idle state or not. If the clear indicator light is blinking and green, maybe WIFI data is down sending and hasn't been completed. Please wait;</li> <li>- Try to reconnect WIFI or restart printer;</li> <li>- Please contact the serviceman if the problem still exists.</li> </ul>
The printer is	- Ditto;



off-line	
The showing of the indicator light is abnormal	<ul style="list-style-type: none"> <li>- Cut off the power and restart the printer.</li> <li>- Please contact the serviceman if the problem still exists.</li> </ul>
The paper can't be led to the right place	<ul style="list-style-type: none"> <li>- Reinsert the paper, and insert the paper to the bottom;</li> <li>- Check the size or thickness of paper is suitable or not;</li> <li>- Please contact the serviceman if the problem still exists.</li> </ul>
The paper can't come out	<ul style="list-style-type: none"> <li>- If the paper jam occurs, please open the flip cover to pull out the jammed paper;</li> <li>- Check the size or thickness of paper is suitable or not;</li> <li>- Please contact the serviceman if the problem still exists.</li> </ul>
The character on the printed paper is too light	<ul style="list-style-type: none"> <li>- Adjust it through the printing option.</li> </ul>

## 8. Specifications

Item	Description
Print method	Thermal printing
Print speed	2ppm
Resolution	200dpi×200dpi
Printer port	USB2.0
Control language of printing	GDI
Paper feeding method	Manual feeding
Paper size	A4 and B5
Paper type	Tattoo transfer printing paper and thermal paper
Consumables	None
Operating system	WinXP, Vista, Win7, Win8, Win10, Android, and IOS
Power supply	DC14V——6A
Power	Maximum:150W
Noise	Maximum sound pressure level≤58dB(A)
Dimension of machine	283mm×59mm×38.5mm
Net weight of machine	545g
Operating temperature	5℃ ~ 40℃
Operating humidity	40% ~ 60%
Storage temperature	-40℃ ~ 80℃
Storage humidity	5% ~ 90%
Atmospheric pressure	86kPa ~ 106kPa



## **TOEC Technology Co., Ltd.**

Address: No.6 Taishan Road Hexi District Tianjin China

P.O. Box: 300211

Hotline of Sales: 022-28268291/28262631

Hotline of After-sales Service: 022-28268471/28268478

Free Service Hotline: 800-818-8080

Fax: 022-28268440

E-mail Address of Sales: [e100@toec.com](mailto:e100@toec.com)

E-mail Address of After Sales Service: [service@toecfax.com](mailto:service@toecfax.com)

Website: [www.toec.com](http://www.toec.com)

Version: March of 2016, First Edition