

**Figure 3**  
Signal Port of the EUT



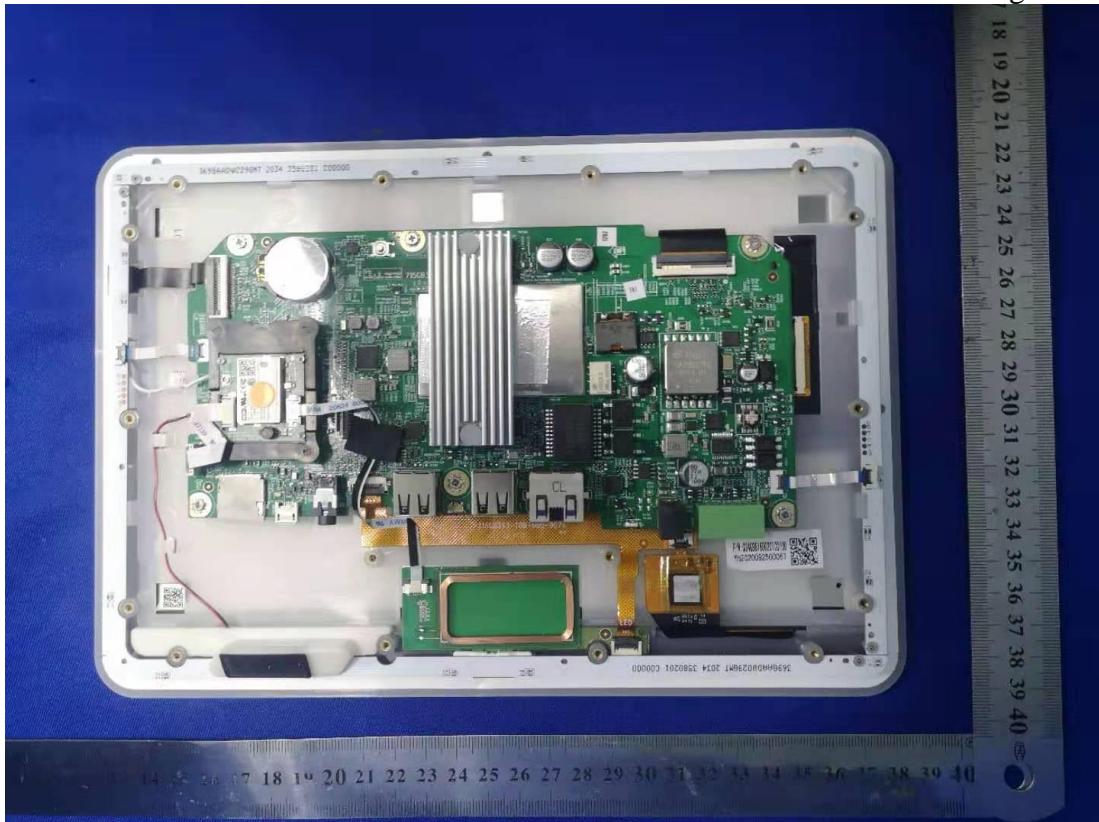
**Figure 4**  
Inside Configuration of the EUT



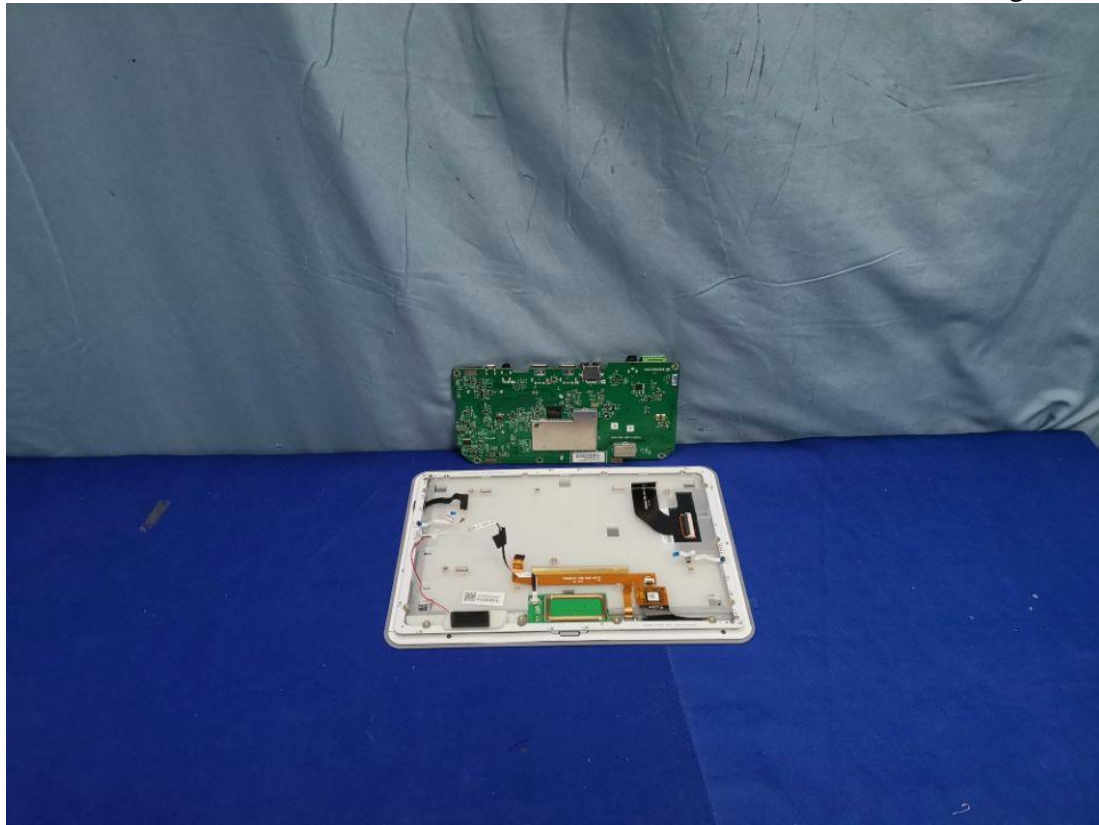
Figure 5  
Inside Configuration of the EUT



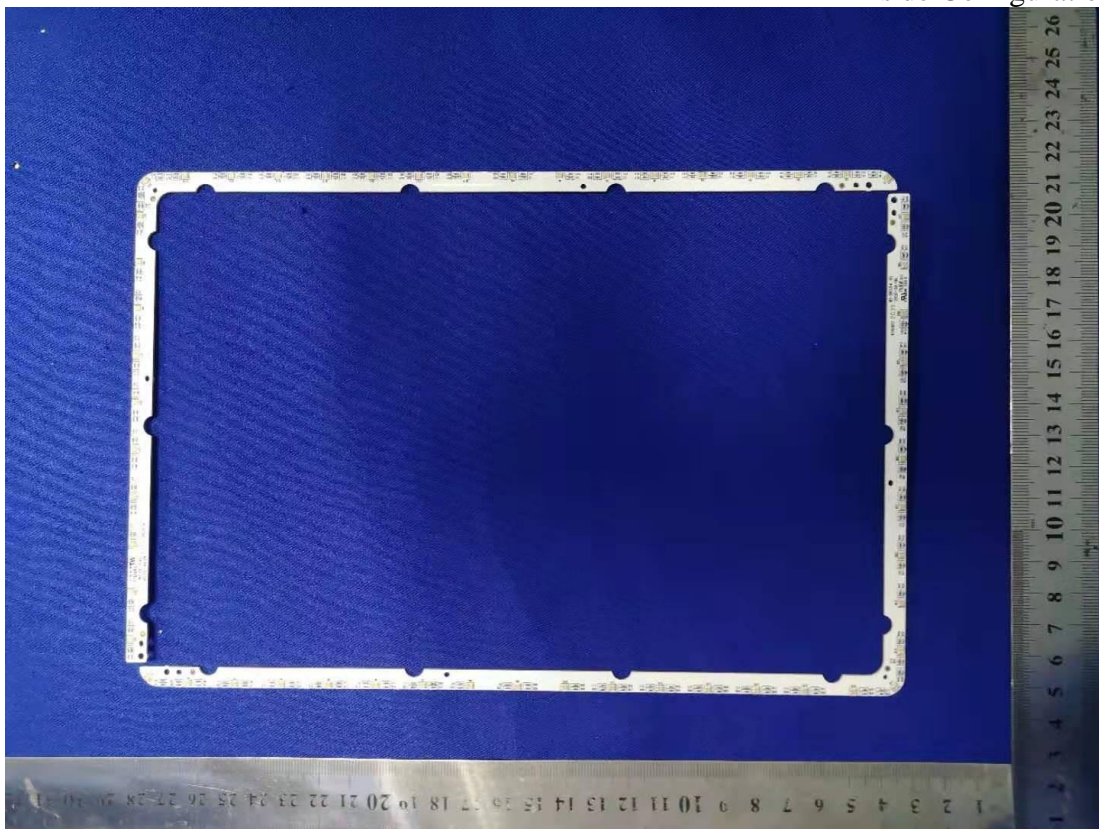
Figure 6  
Inside Configuration of the EUT



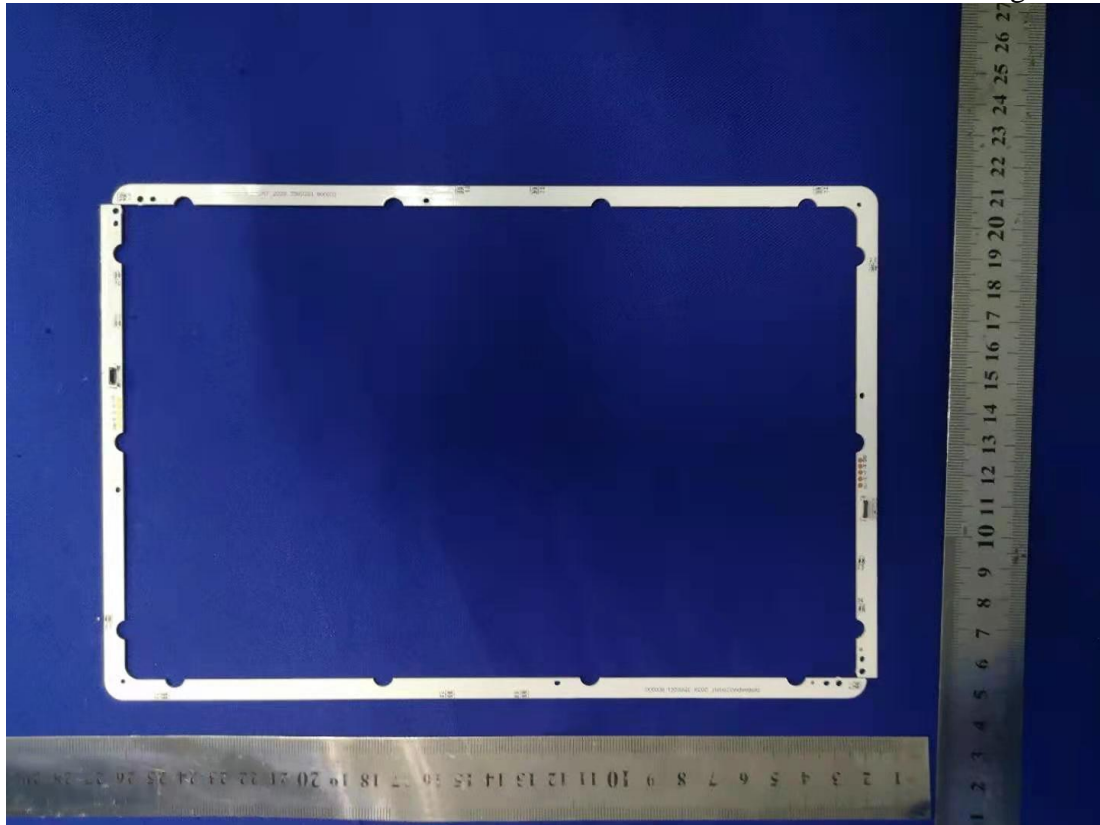
**Figure 7**  
Inside Configuration of the EUT



**Figure 8**  
Inside Configuration of the EUT



**Figure 9**  
Inside Configuration of the EUT



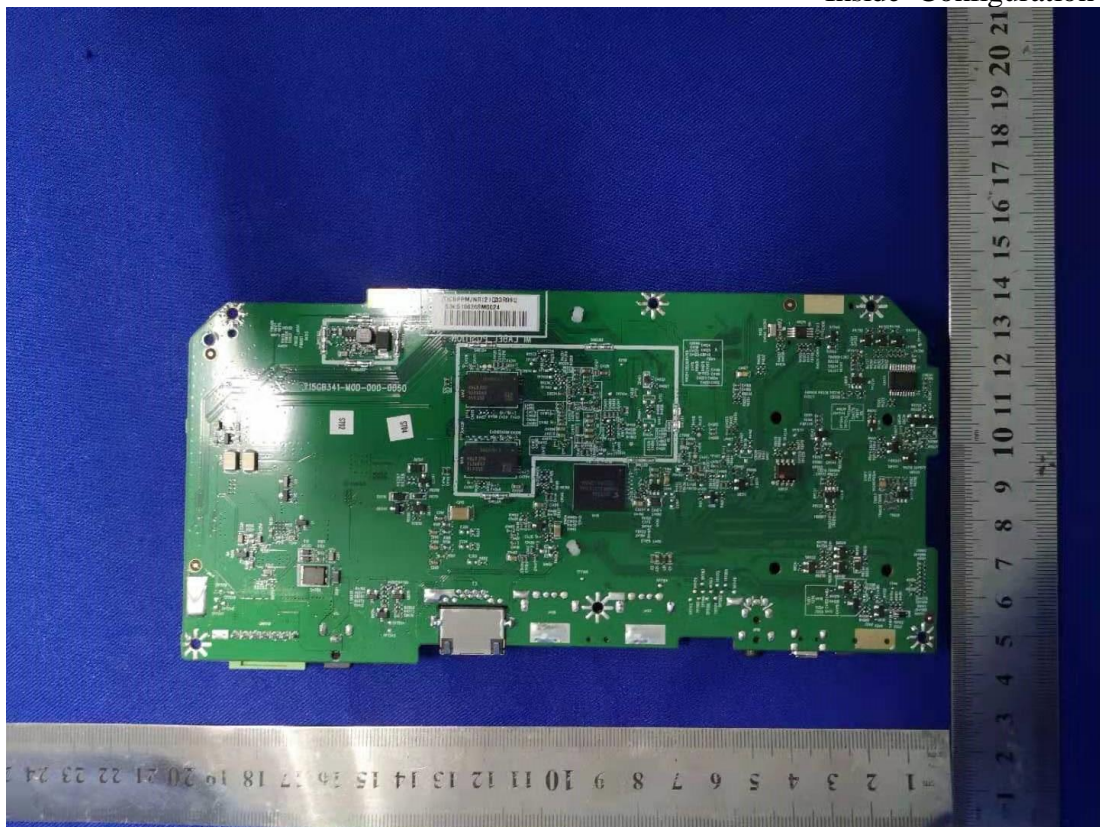
**Figure 10**  
Inside Configuration of the EUT



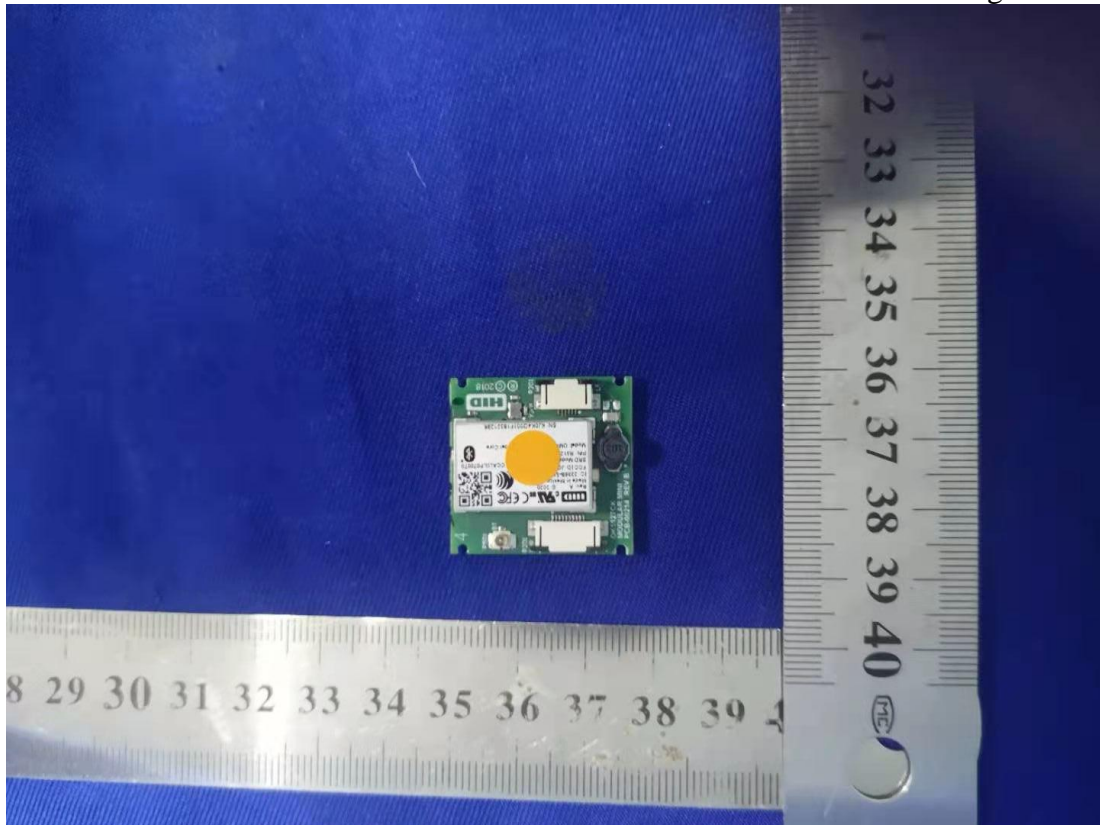
**Figure 11**  
Inside Configuration of the EUT



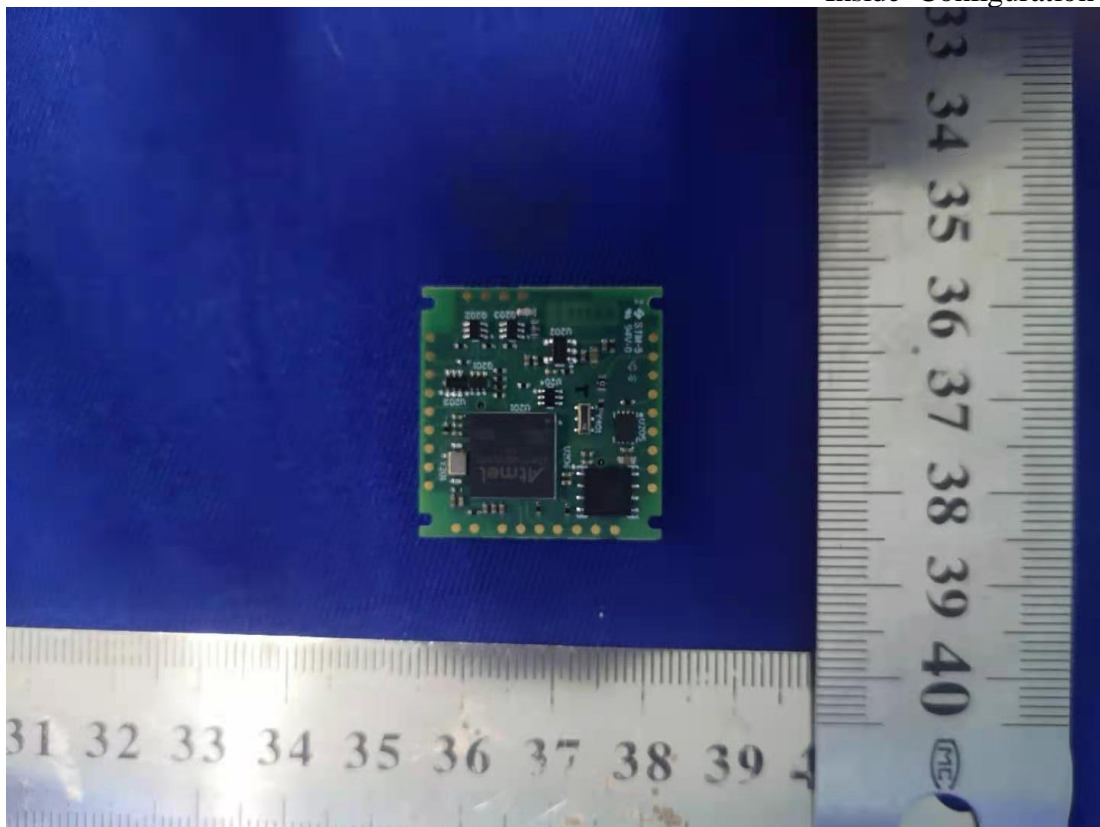
**Figure 12**  
Inside Configuration of the EUT



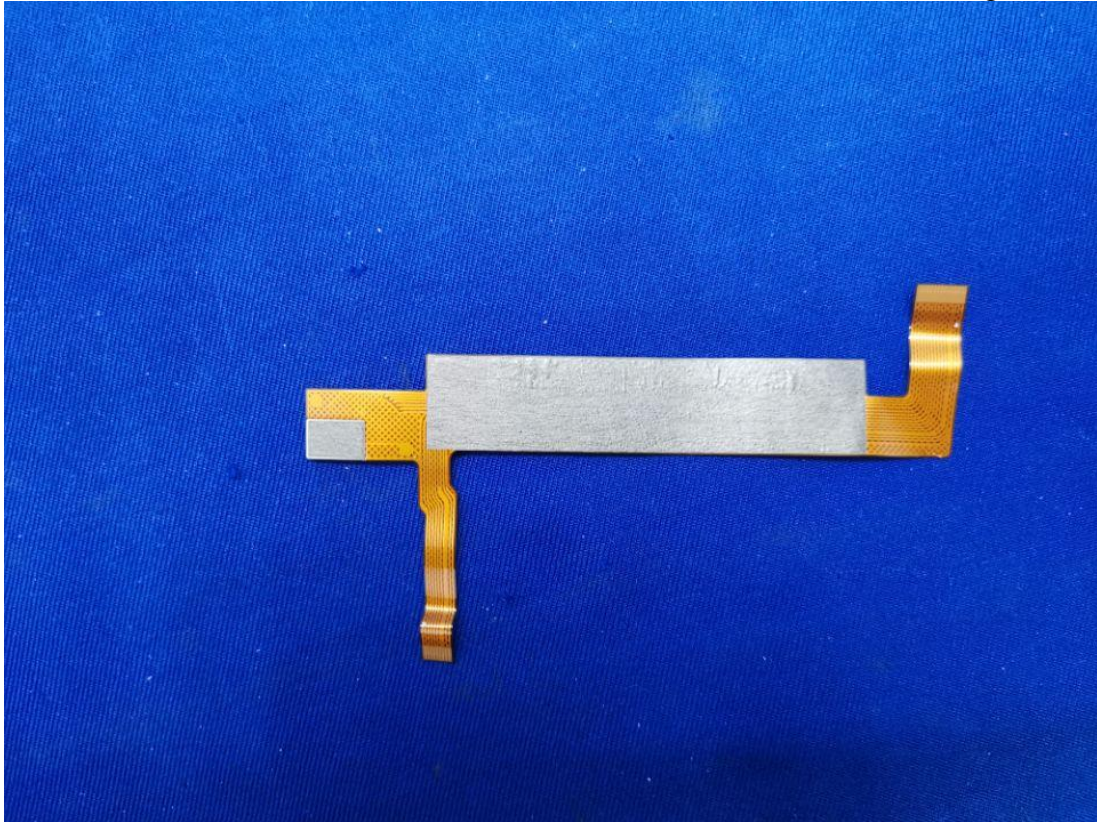
**Figure 13**  
Inside Configuration of the EUT



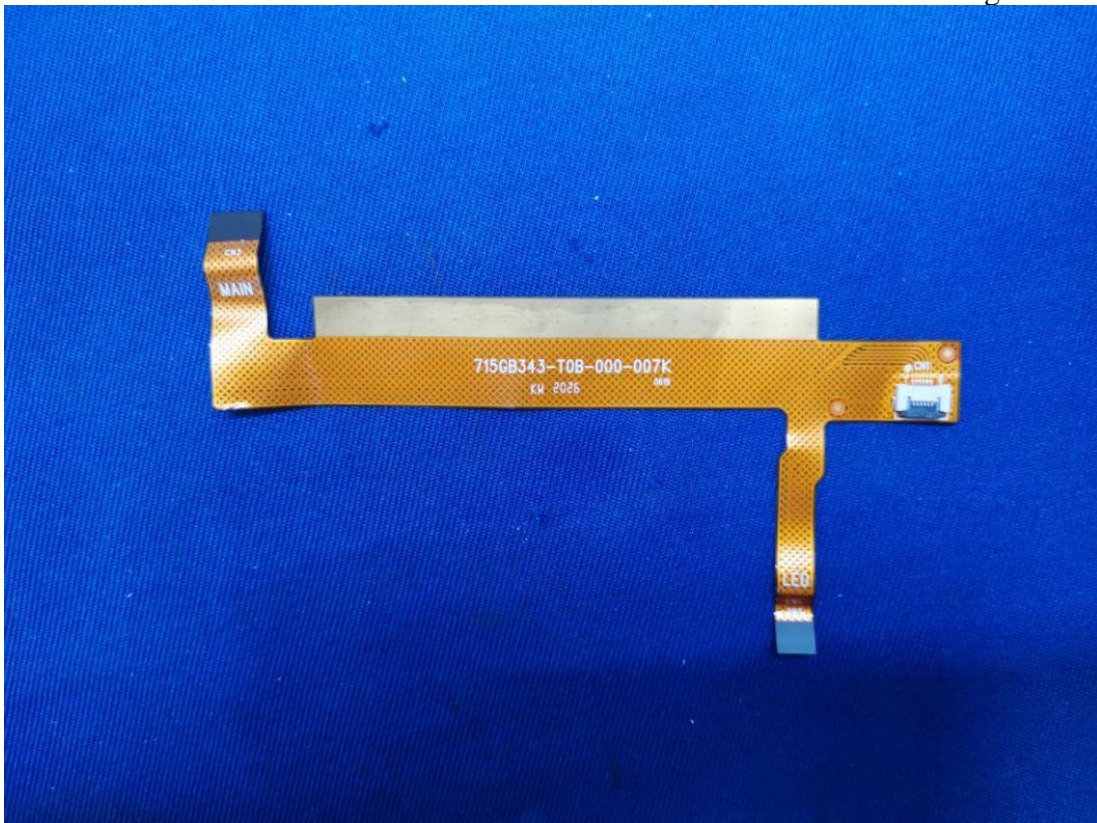
**Figure 14**  
Inside Configuration of the EUT



**Figure 15**  
Inside Configuration of the EUT



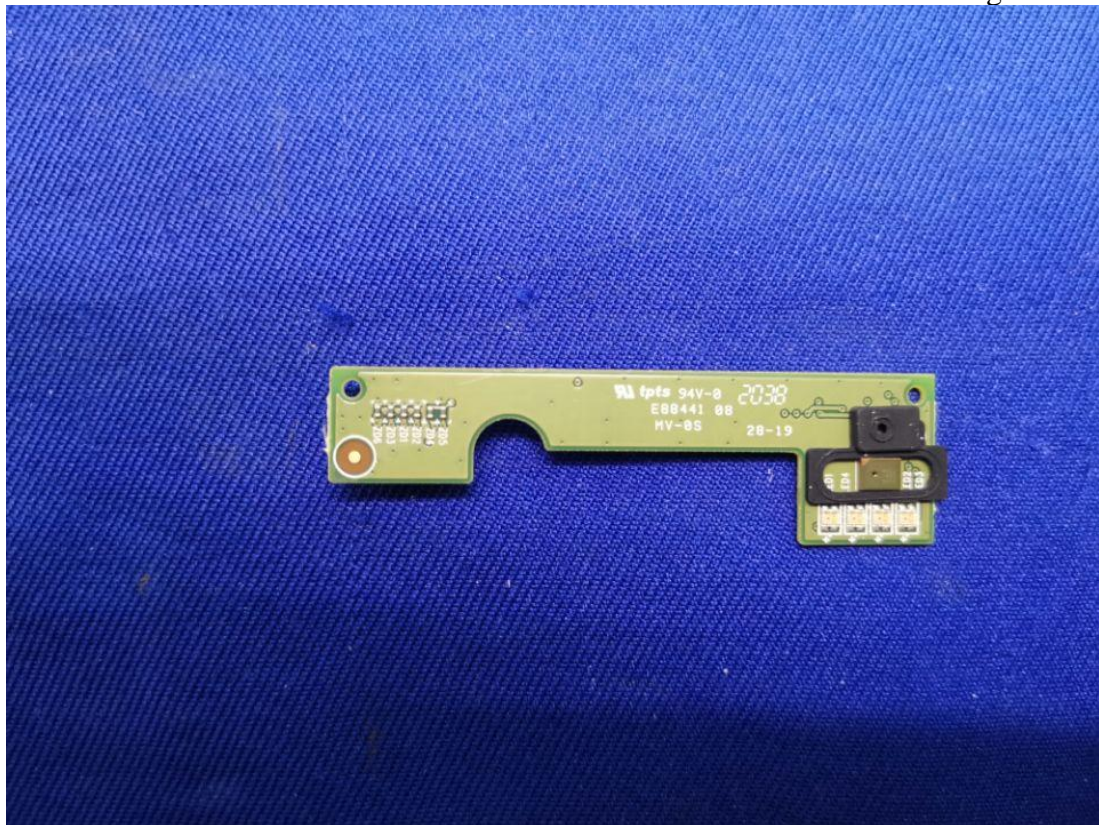
**Figure 16**  
Inside Configuration of the EUT



**Figure 17**  
Inside Configuration of the EUT

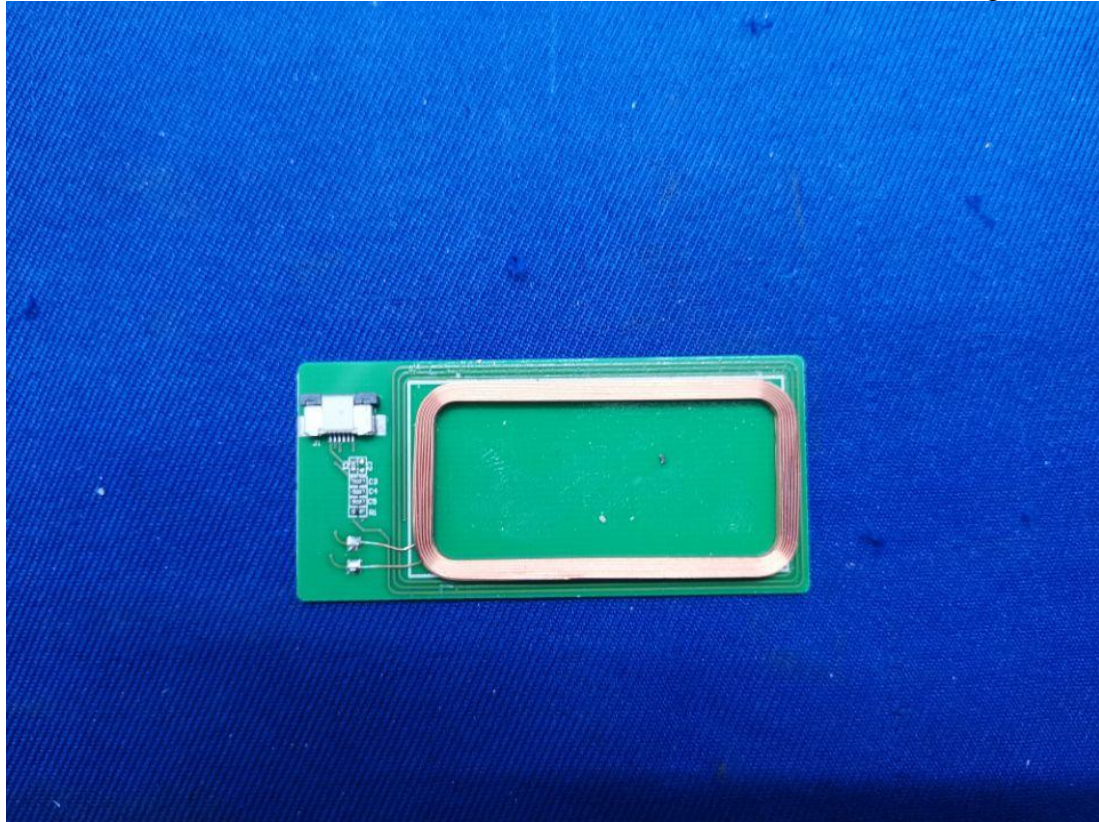


**Figure 18**  
Inside Configuration of the EUT





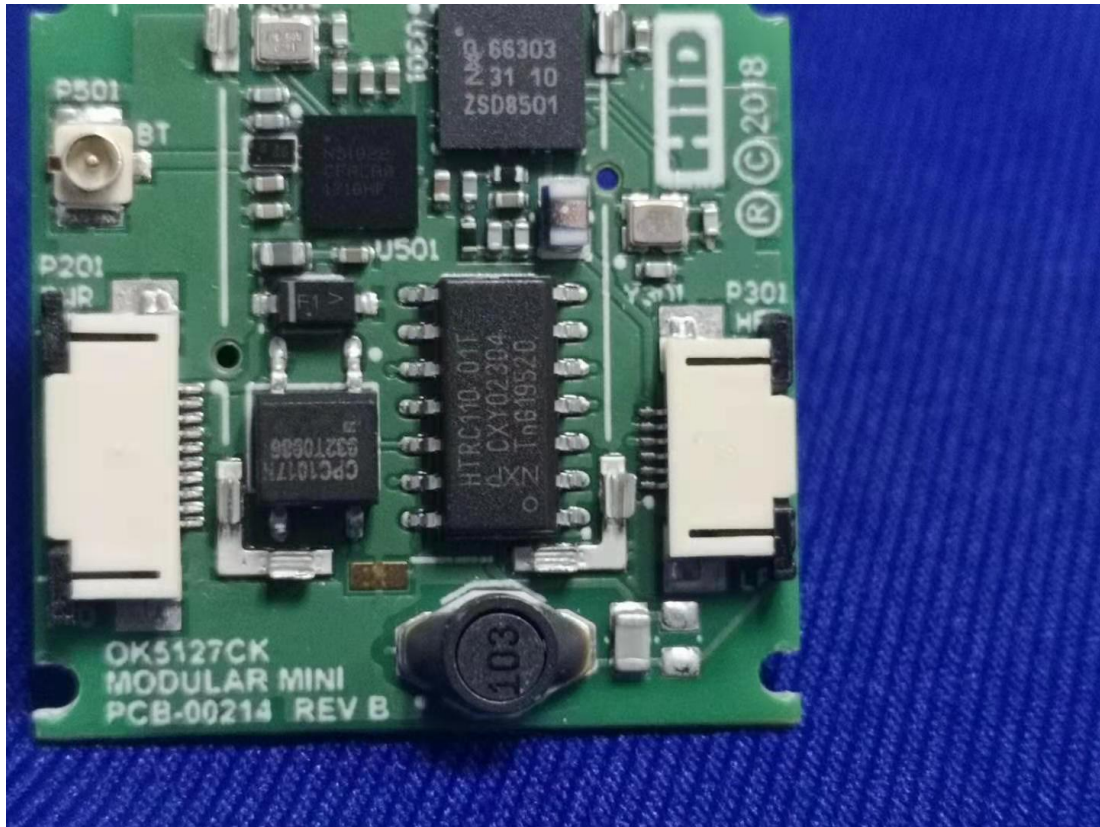
**Figure 19**  
Inside Configuration of the EUT



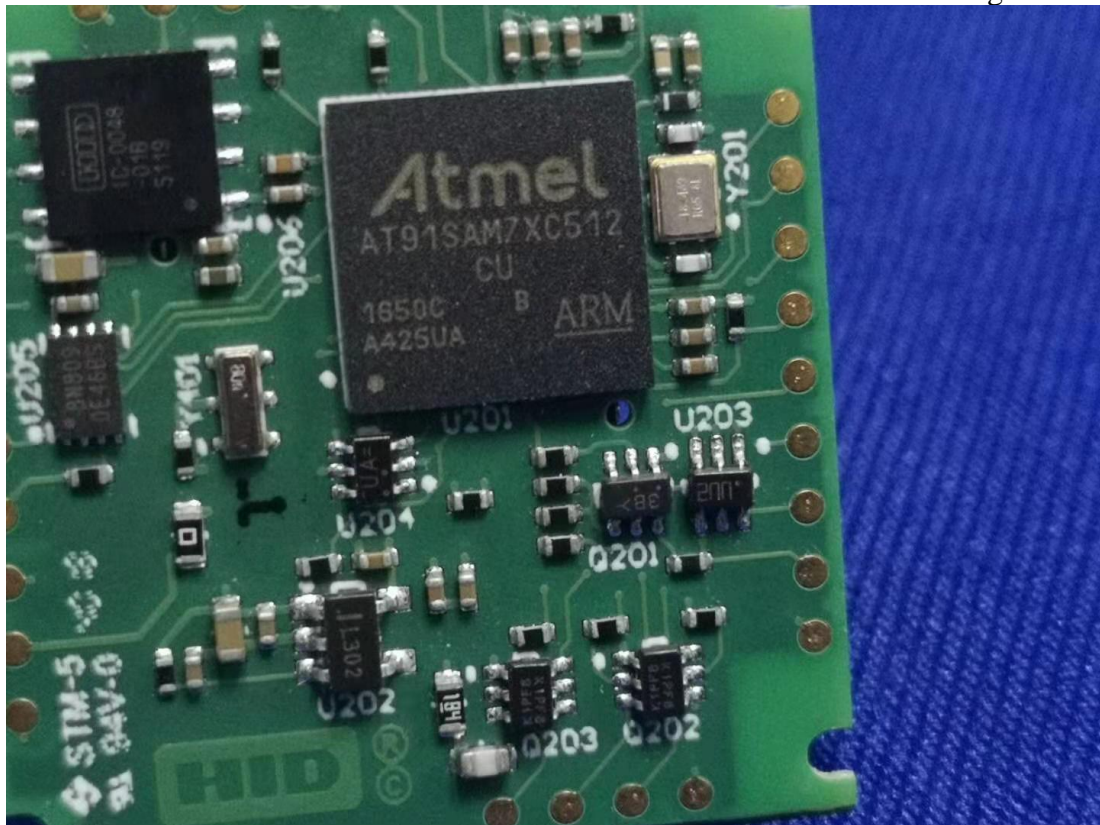
**Figure 20**  
Inside Configuration of the EUT



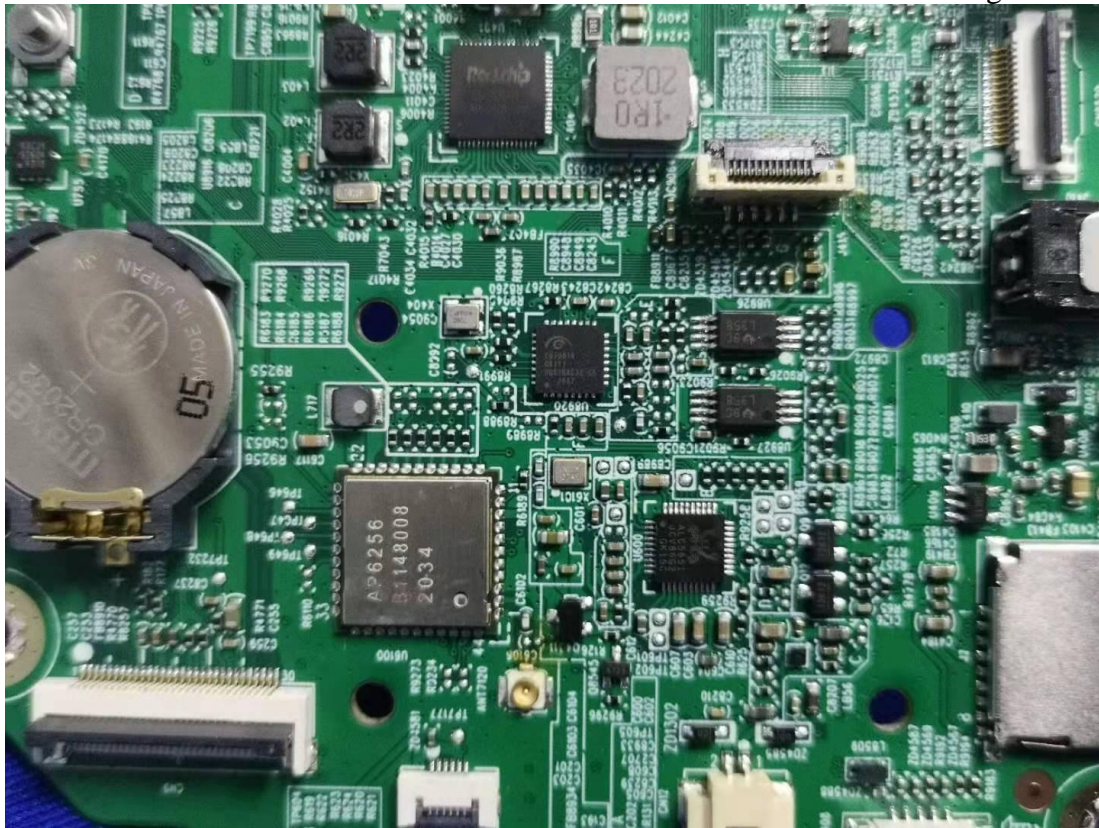
**Figure 21**  
Inside Configuration of the EUT



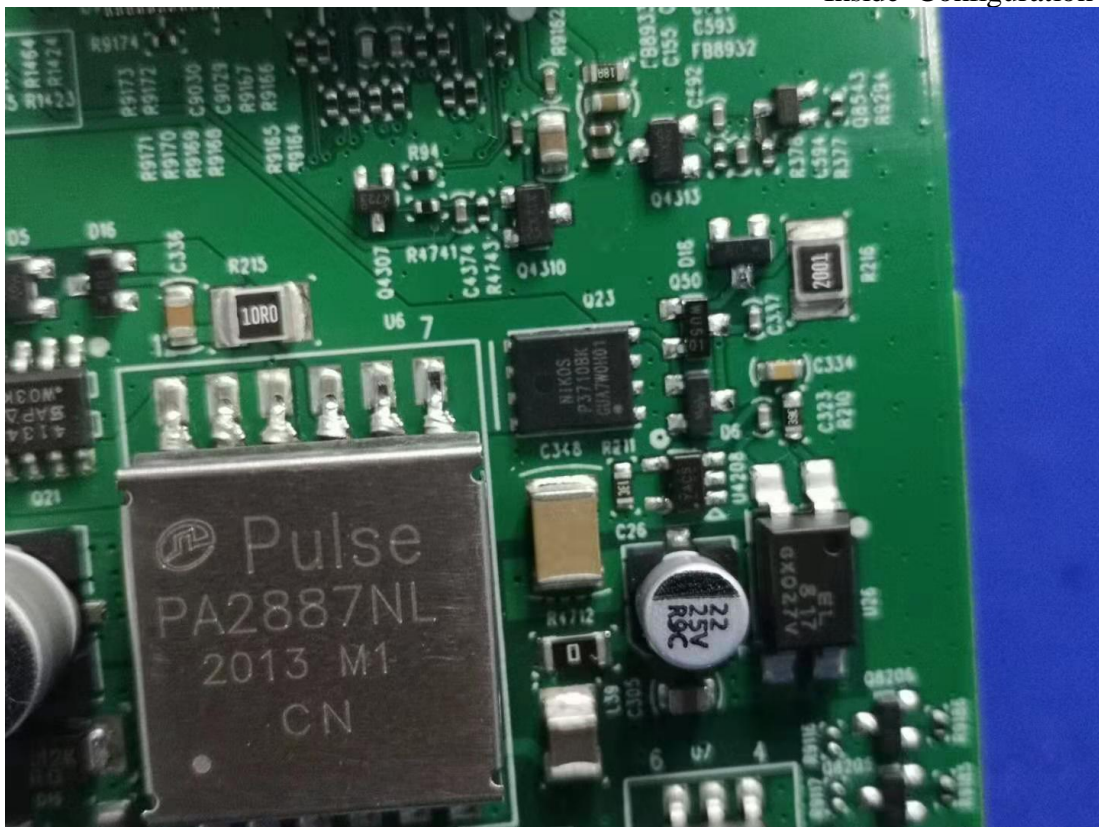
**Figure 22**  
Inside Configuration of the EUT



**Figure 23**  
Inside Configuration of the EUT

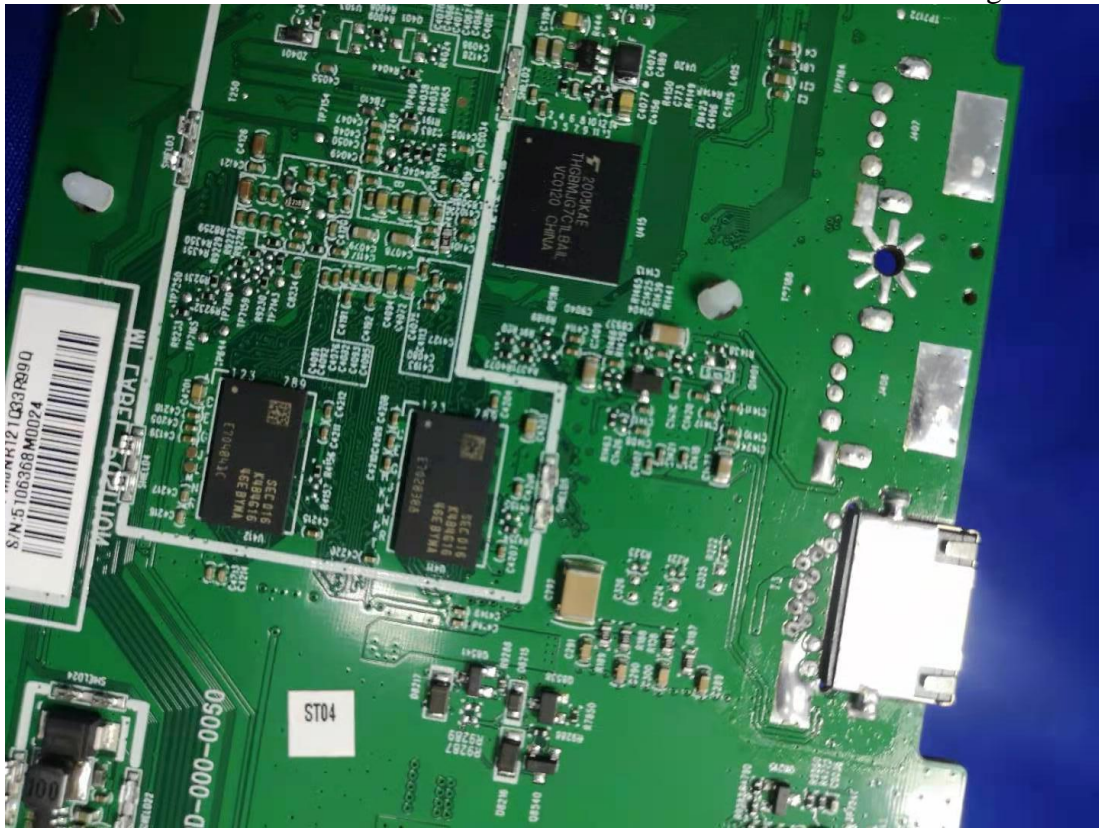


**Figure 24**  
Inside Configuration of the EUT

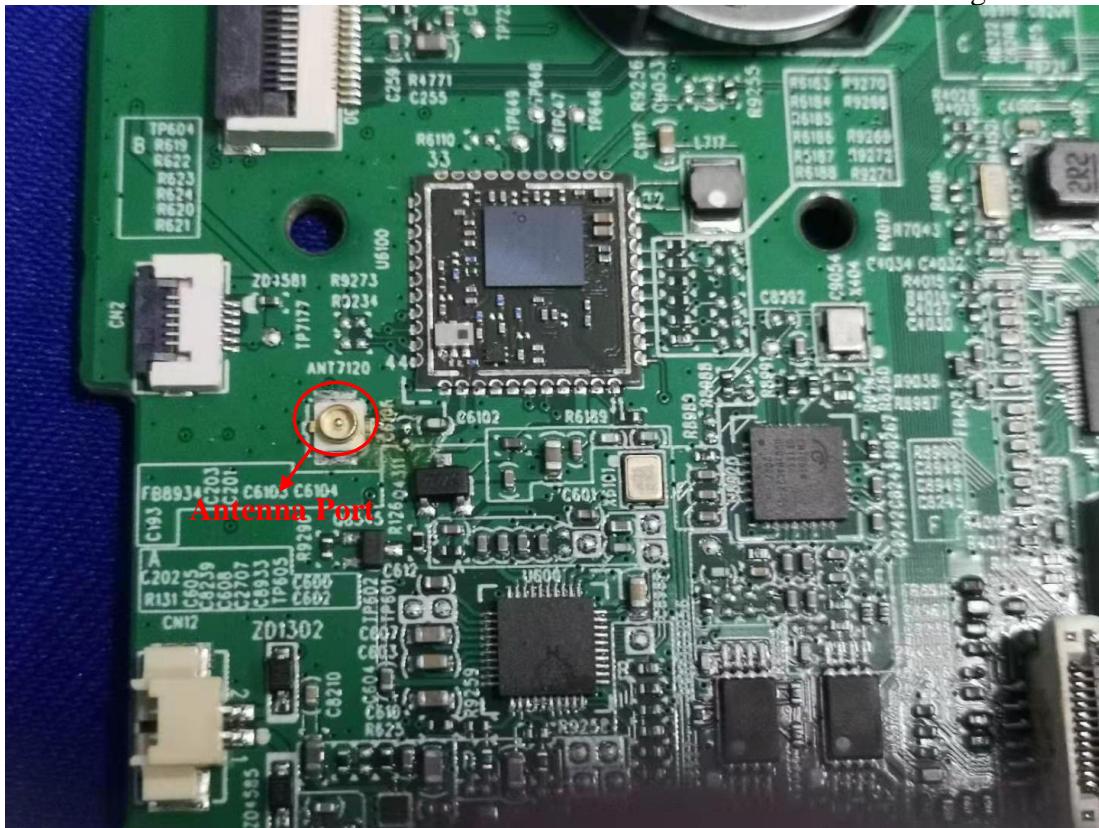




**Figure 27**  
Inside Configuration of the EUT



**Figure 28**  
Inside Configuration of the EUT



**Figure 29**  
Adapter



**Figure 30**  
Adapter



**Figure 31**  
Adapter



**Figure 32**  
Adapter

