

Safety Information

Changes or modifications not expressly approved by the party responsible for compliance could void the user's authority to operate the equipment.

**NOTE:** THE MANUFACTURER IS NOT RESPONSIBLE FOR ANY RADIO OR TV INTERFERENCE CAUSED BY UNAUTHORIZED MODIFICATIONS TO THIS EQUIPMENT.SUCH MODIFICATIONS COULD VOID THE USER'S AUTHORITY TO OPERATE THE EQUIPMENT.

NOTE: This equipment has been tested and found to comply with the limits for a Class A digital device, pursuant to part 15 of the FCC Rules. These limits are designed to provide reasonable protection against harmful interference when the equipment is operated in a commercial environment. This equipment generates, uses, and can radiate radio frequency energy and, if not installed and used in accordance with the instruction manual, may cause harmful interference to radio communications. Operation of this equipment in a residential area is likely to cause harmful interference in which case the user will be required to correct the interference at his own expense.

FCC Radiation Exposure Statement:

This equipment complies with FCC RF radiation exposure limits set forth for an uncontrolled environment. This device and its antenna must not be co-located or operating in conjunction with any other antenna or transmitter. To comply with FCC RF exposure compliance requirements, this grant is applicable to only Mobile Configurations. The antennas used for this transmitter must be installed to provide a separation distance of at least 20 cm from all persons and must not be co-located or operating in conjunction with any other antenna or transmitter.

Content Management

Please consult the software documentation for information specific to your content management solution.

Troubleshooting

How do I interrupt playback and enter setup menu?



Use USB mouse to click and hold one corner of the screen for 10 seconds to exit playback and enter setup menu.

How do I provide a DEBUG log for a misbehaving signboard to the support team?

Please follow the instructions below to collect the player's DEBUG log:

- 1 Prepare a blank USB stick in FAT-32 format.
- 2 Create a folder named "DEBUG" (case insensitive) in the root of USB stick.
- 3 Make sure the player is operating (see welcome screen or playing content).
- 4 Insert the USB stick into player and wait for 30 seconds.
- 5 Within the "DEBUG" folder, is a folder with a string of number as its name. If the string of numbers are all zero's, the debug log has not been collected properly. Repeat step 1-4 again and make sure to wait the 30 seconds.
- 6 Zip the"DEBUG" folder and send to IAdea Support Team.

Reseting smart signboard to factory default

Factory resetting the smart signboard will result in the removal of all saved contents, passwords, and configurations in settings. Please refer to the steps below to complete the smart signboard factory reseting process:

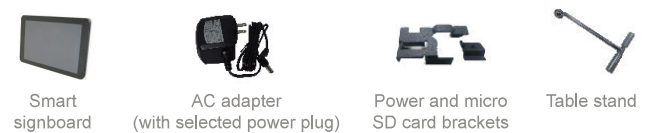
- 1 Use a pen to press and hold the reset button - do not release until Step 4.
- 2 Insert the power cord.
- 3 Wait 30 seconds for the system reboot indicating your data is erased.
- 4 Release the reset button and your smart signboard will initialize in factory default state.

XDS-1098

Quick Start Guide

This is a quick walkthrough of the set up process. For complete documentations and quick start guides, please visit <http://support.IAdea.com>.

Box Content



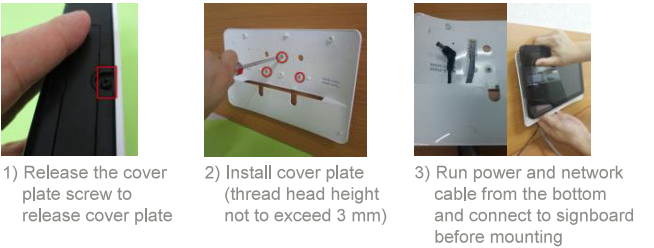
Mounting and Installation

Mounting option 1: VESA mount  
- VESA standard: VESA M/S-D75 (75 mm x 75 mm)  
- Screw: M4 x 4 mm (excluding the mounting plate thickness)

Mounting option 2: using back cover  
- Power / SD card brackets MUST NOT be connected when mounting cover plate

Mounting option 3: glass mount  
- 3M VHB™ Industrial Heavy Duty Mounting Tape (90 mm x 70 mm)

Mounting back cover



### Securing power and network cable



1) Insert both cables



2) Fasten bracket onto the socket

### Securing SD card



1) Insert SD card bracket



2) Fasten SD card bracket

### Securing table stand



Screw the table stand into stand screw hole. Supports landscape and portrait setup.



Landscape

Portrait

### Glass mount

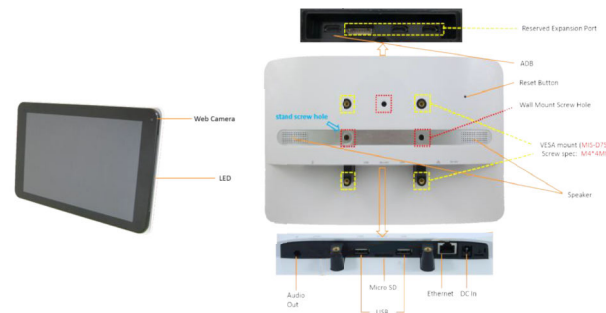


- 1) Order your glass mount kit
- 2) Scan QR code for user manual
- 3) Mount your signboard
- 4) Impress your visitors



QR: [http://www.iadea.com/wp-content/uploads/2018/10/PGM-001\\_User-Manual\\_2018OCT\\_web.pdf](http://www.iadea.com/wp-content/uploads/2018/10/PGM-001_User-Manual_2018OCT_web.pdf)

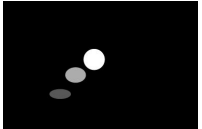
### Port Connections



### System Setup

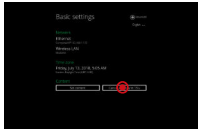
#### 1 Boot up

Plug in the AC adapter and Ethernet cable (if that is the preferred method of connecting to network) located at the back of the smart signboard and it will power on automatically. Once the user has exited the boot up screen, users can go through system configurations in both landscape and portrait orientations.



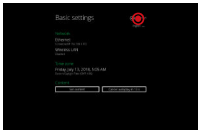
#### 2 Basic settings

When boot up is complete, the user will see the "Basic settings" which allows the user to make configurations or autoplay preloaded content. Please note, the smart signboard is set to autoplay preloaded content 15 seconds after boot up. This can be canceled if "Cancel autoplay in 15s" is selected which lets the user remain on the "Basic settings" and initiate playback manually.



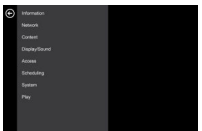
#### 3 Make configurations

To change smart signboard system language, select "(Current Language) ...." For system configurations, select "Advanced."



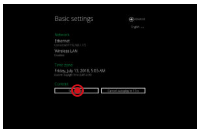
Important recommended configurations:

- 1 Set correct time, date, and time zone for properly scheduled playback.
- 2 Set password to prevent unauthorized access during setup menu.
- 3 Set network for establishing network connection.



#### 4 Set content

Users can set content by clicking "Set Content" to enter the URL or use the desired content management system to upload the contents onto the smart signboard.



41M78SP05903A