

# IAD18000/18001 Hardware User Manual



10.1 HD Smart Signboard

IAddea Corporation

綠創科技

**Warning:**

Changes or modifications to this unit not expressly approved by the party responsible for compliance could void the user's authority to operate the equipment.

**NOTE:**

This equipment has been tested and found to comply with the limits for a Class B digital device, pursuant to Part 15 of the FCC Rules. These limits are designed to provide reasonable protection against harmful interference in a residential installation. This equipment generates, uses and can radiate radio frequency energy and, if not installed and used in accordance with the instructions, may cause harmful interference to radio communications.

However, there is no guarantee that interference will not occur in a particular installation. If this equipment does cause harmful interference to radio or television reception, which can be determined by turning the equipment off and on, the user is encouraged to try to correct the interference by one or more of the following measures:

- Reorient or relocate the receiving antenna.
- Increase the separation between the equipment and receiver.
- Connect the equipment into an outlet on a circuit different from that to which the receiver is connected.
- Consult the dealer or an experienced radio/TV technician for help.

Adaptor with ferrite must be used with this equipment to ensure compliance with the Class B FCC limits.



Correct Disposal of this product. This marking indicates that this product should not be disposed with other household wastes throughout the EU. To prevent possible harm to the environment or human health from uncontrolled waste disposal, recycle it responsibly to promote the sustainable reuse of material resources. To return your used device, please use the return and collection systems or contact the retailer where the product was purchased. They can take this product for environmental safe recycling.

“FCC & CE RF Radiation Exposure Statement Caution: To maintain compliance with the FCC & CE's RF exposure guidelines, place the product at least 20cm from nearby persons.”

The power consumption of the product in networked standby is 5.927W which all wired network ports are connected and all wireless network ports are activated.

Adapter manufacturer: Asia Power Devices Inc.

Model No.: WB-18D12R

Input: 100-240V~50-60Hz0.5A Max.

Output: 12V=1.5A

# Contents

<b>IAD18000/18001 Hardware User Manual</b>	<b>0</b>
<b>1. Introduction</b>	<b>1</b>
1.1. Package contents	1
1.2. Physical view and features	1
1.3. Installation	3
1.4. System setup	4
1.5. Connect device to network	5
1.6. Content Management	5
<b>2. Technical Data</b>	<b>6</b>
2.1. Specifications	6

# 1. Introduction

This document describes the hardware specification of the IAD18001.

## 1.1. Package contents



Main Unit



Power adapter



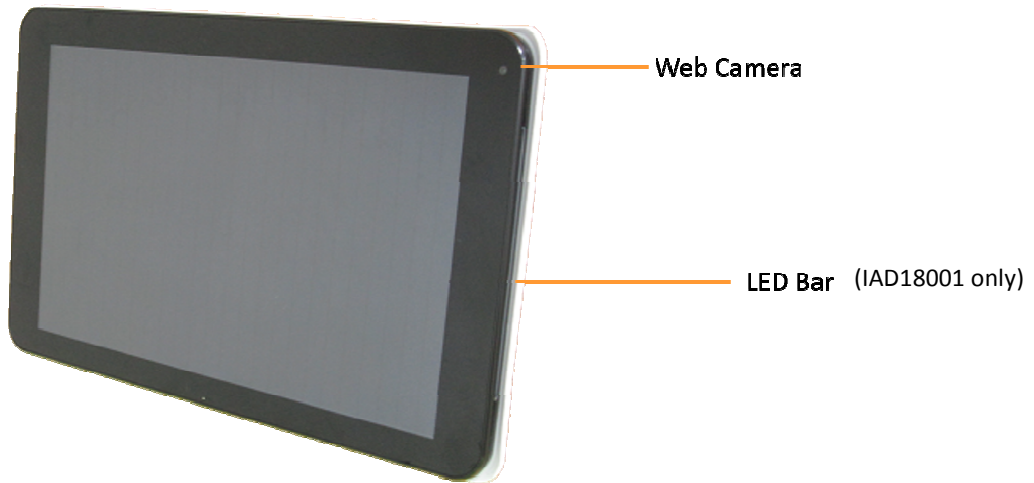
Power and MicroSD



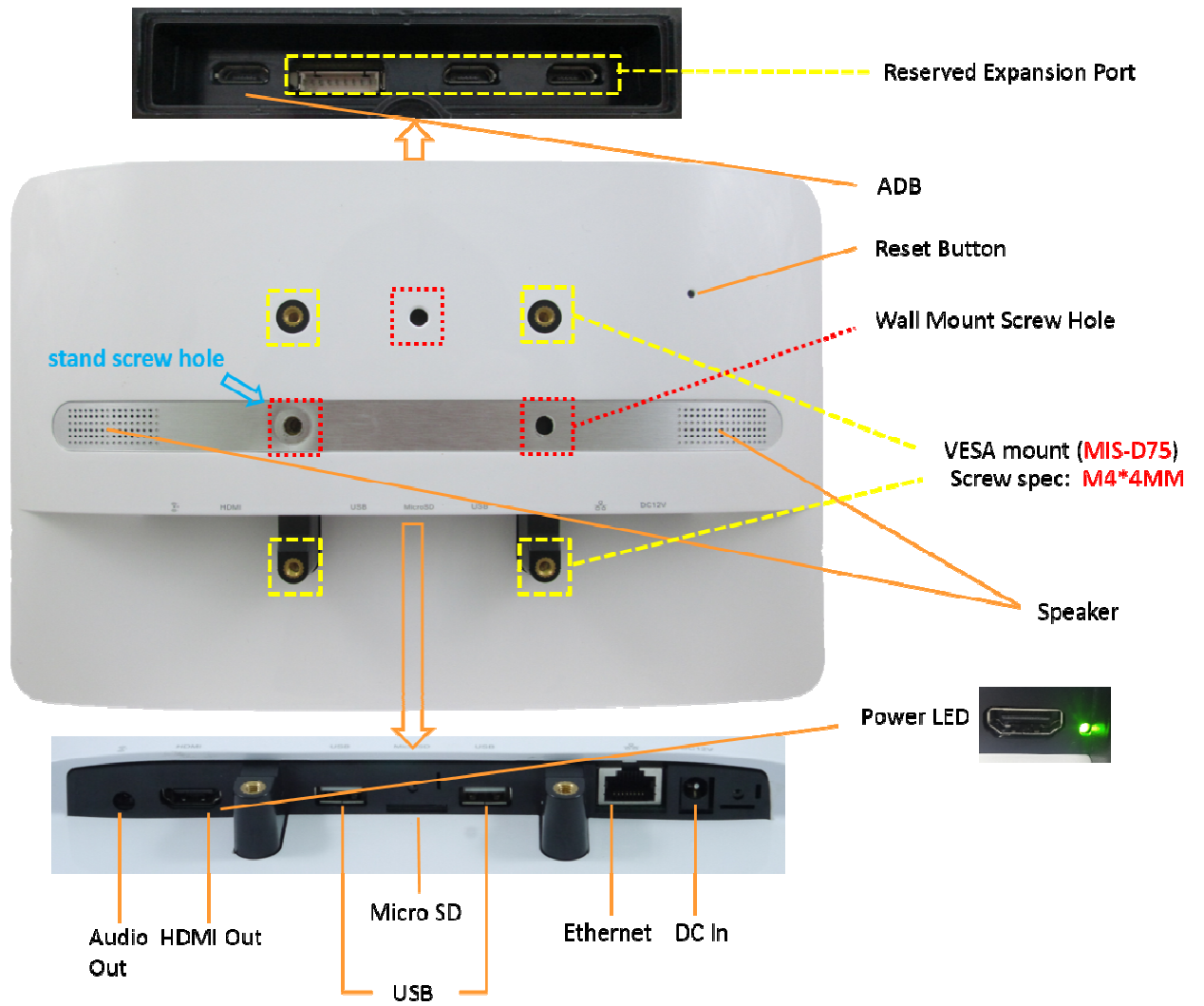
Table Stand

## 1.2. Physical view and features

Front View



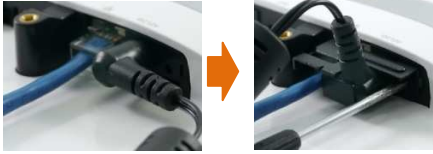
Rear View



## 1.3. Installation

### Securing the power and network cable

- 1 Insert power plug
- 2 Fasten bracket onto the socket



### Securing Micro SD card

- 1 Insert SD card bracket
- 2 Fasten SD card bracket



### Installing the table stand

- 1 Simply screw the supplied table stand into stand screw hole



## Mounting

IAD18001 is MIS-D75 compatible, the recommended screw is M4 x 4.5~5mm (excl. bracket thickness)

### Mounting Option 1: [VESA mount]

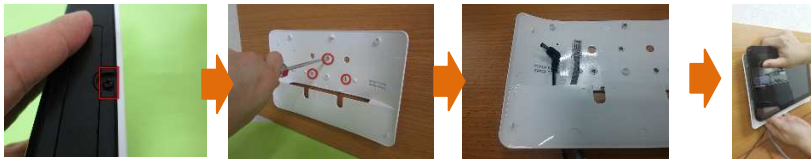
Supporting VESA standard: VESA MIS-D75 (75\*75mm)

Supporting screw: M4\*4mm (exclude the mounting plate thickness)

### Mounting Option 2: [Using back cover]

(power / SD card brackets MUST NOT installed while mount on back cover)

- 1 Release the back cover screw to release back cover
- 2 Install back cover : thread head height must not exceed **3mm**
- 3 Route power and network cable from bottom as shown in photo
- 4 Plug power and network cable to signboard , and then install signboard with back cover carefully



## 1.4. System setup

- 1 **INSTALL** the AC power adapter

→ You should see the player boot up screen as shown in right

- 2 **WAIT** while player boots up

→ once you see “Basic settings” on screen, the unit is ready for content update or menu configuration

- 3 **PLUG IN** a USB mouse to the unit’s USB port or configure by touch screen(IAD18001 only)

- 4 **Enter** the corresponding configuration option by moving the mouse cursor over the configuration and click on the option to enter (or tap on the configuration option for IAD18001)

→ *find and set the correct time/date AND time zone.*

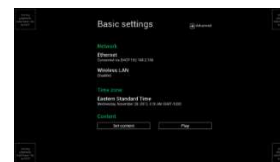
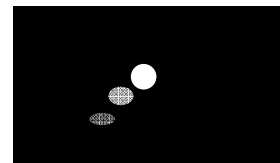
**IMPORTANT:** time zone must be set correctly in the menu or via management software for scheduled playback

→ (OPTIONAL) *Set a Password* in the menus to prevent unauthorized changes.

**IMPORTANT:** Password will be asked while enter the setup menu during playback

- 5 **Click** *Set content* button to configure your signage appliance to the content service if needed

→ For advanced player configuration, such as static IP, display resolution, and firmware update, visit [www.digisignage.com](http://www.digisignage.com) for more information

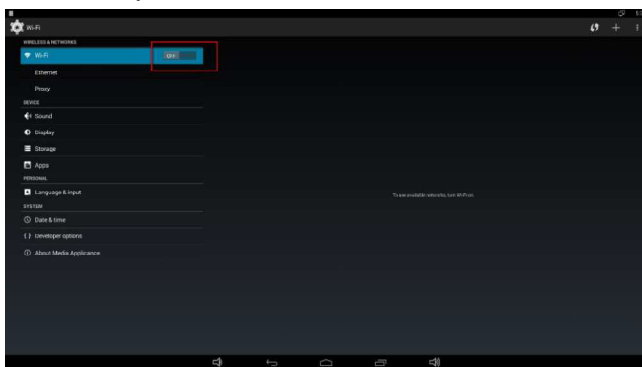


## 1.5. Connect device to network

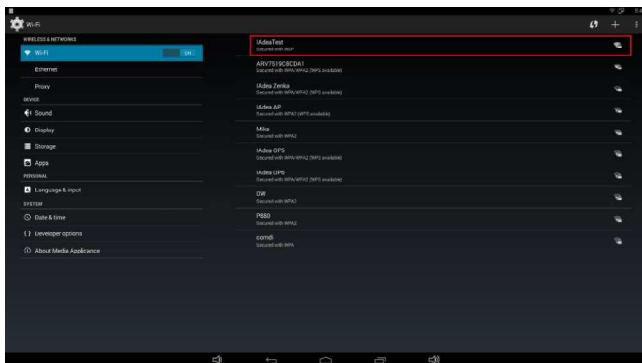
- 1 Click the Wireless LAN setting to launch the wireless configuration UI.



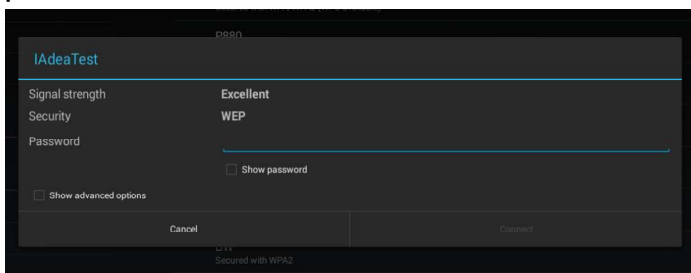
- 2 Click the ON/OFF button as indicated below to turn ON Wireless interface (network).



- 3 The player will scan for wireless signals nearby and available access points will be listed.



- 4 Click on the network ID to connect. If the network requires authentication, you will be asked to provide a password.



## 1.6. Content Management

Please consult the software documentation for information specific to your management solution.



## 2. Technical Data

### 2.1. Specifications

	IAD18000/18001
<b>Display</b>	10.1" IPS panel 10 points multi-touch (IAD18001 only ) Programming LED bar x 2 (IAD18001 only ) 300 nits maximum brightness 1280x800 panel resolution Viewing angle (H/V): 178/178 Built-in speaker 2W x 2
<b>Video format support</b>	H.264 (up to 1080p,10Mbps) VC-1 (up to 1080p,10Mbps) MPEG-4 ASP (up to 1080p,10Mbps) MPEG-2 (up to 1080p,10Mbps) POPAl Screen Media Standards : S6 to S12, E4,E7,E8
<b>Image format support</b>	JPEG,PNG up to 1920x1080 POPAl Screen Media Standards : S1 to S3, E1 to E3
<b>Audio codec support</b>	MP3 up to 320Kbps POPAl Screen Media Standards : S4, S5
<b>Dynamic content</b>	W3C HTML5 (HTML, CSS, JavaScript) W3C SMIL 3.0 instructions (sub-set)
<b>Physical I/O connectors</b>	3.5mm analog stereo audio out port HDMI output port USB 2.0 x 2 RJ45 Ethernet port Micro SD card slot DC in Micro USB for ADB reserved expansion port
<b>Local storage</b>	8 GB eMMC with Micro SD card expansion slot
<b>Accessories</b>	Power adapter Power and Micro SD card bracket Table stand
<b>Power requirement</b>	12V 1.5A DC 802.3af compliance PoE, power over Ethernet (IAD18001only )
<b>Power consumption*</b>	14.15 watts max
<b>Environmental</b>	Operating temperature: 0 – 45° C / 32 – 113° F Storage Humidity: 10 – 85% @ 40° C / 104° F non-condensing
<b>Dimensions</b>	260 x 162 x 28 mm (10.23 x 6.37 x 1.02 inches)
<b>Weight</b>	0.727kg 1.5lbs
<b>Safety</b>	UL/CB certified AC adapters
<b>Certifications</b>	CE/FCC
<b>Warranty</b>	One-year limited parts & labor

## About IAdea :

### **IAdea Corporation**

3F, No. 21, Lane 168, Xingshan Road

Taipei, Taiwan 114

Phone: +886-2-2791-1110

Fax: +886-2-2791-1170

Website: <http://www.IAdea.com>

### **Responsible Party in USA:**

Legal Company Name	IAdea America Corporation.
Address	20 Fairbanks, Suite 170, Irvine, CA 92618
Phone, Fax	+1-949-838-7026
Contact Person	Yung-Tsai Wang