



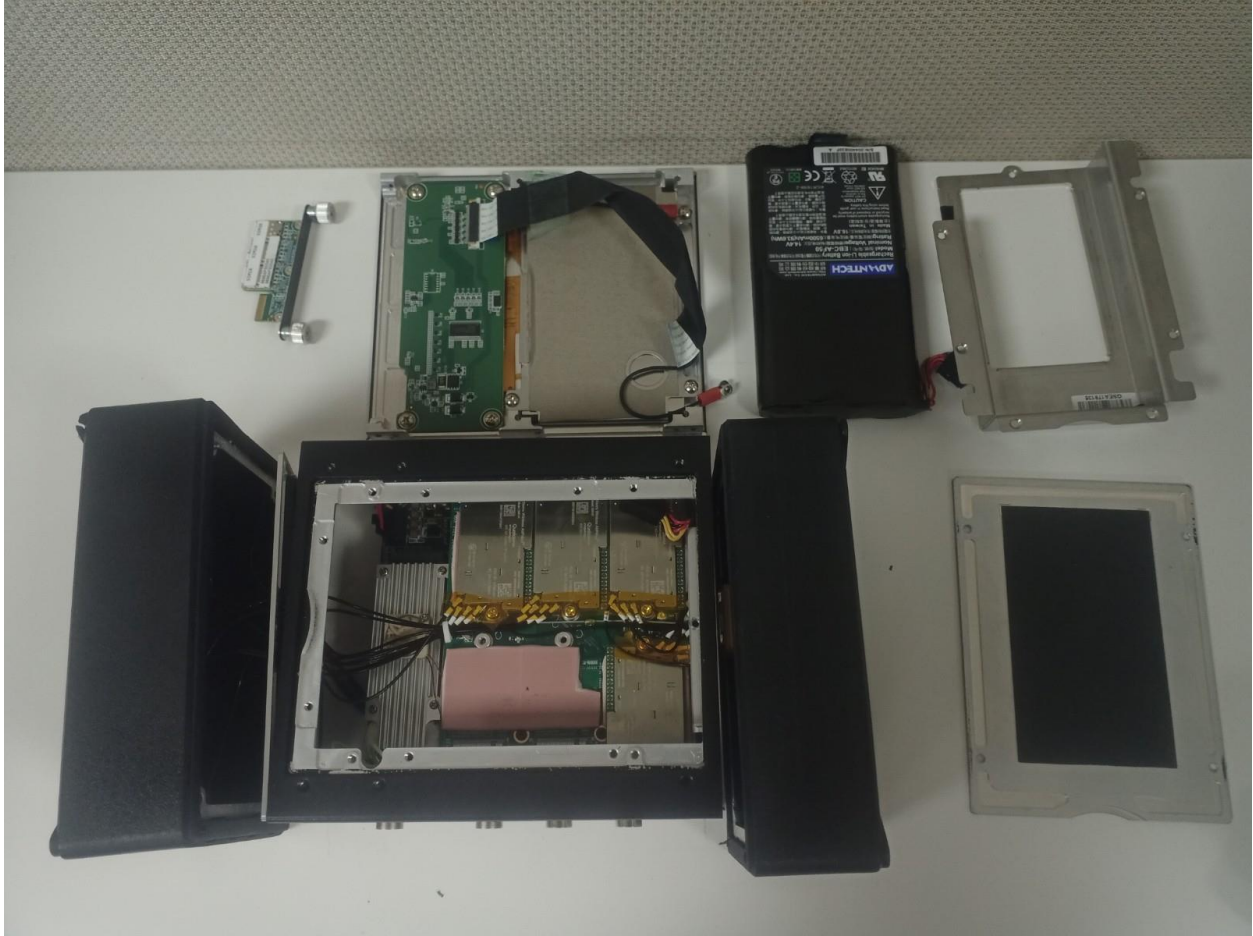
Endcaps removed with device facing up



Front cover/screen removed with device facing up. Endcaps detached.



Device facing down, endcaps detached, back cover removed and screen removed.



Device facing down, battery removed, screen removed, battery tray removed, endcaps detached. Bottom of the RF board is showing.



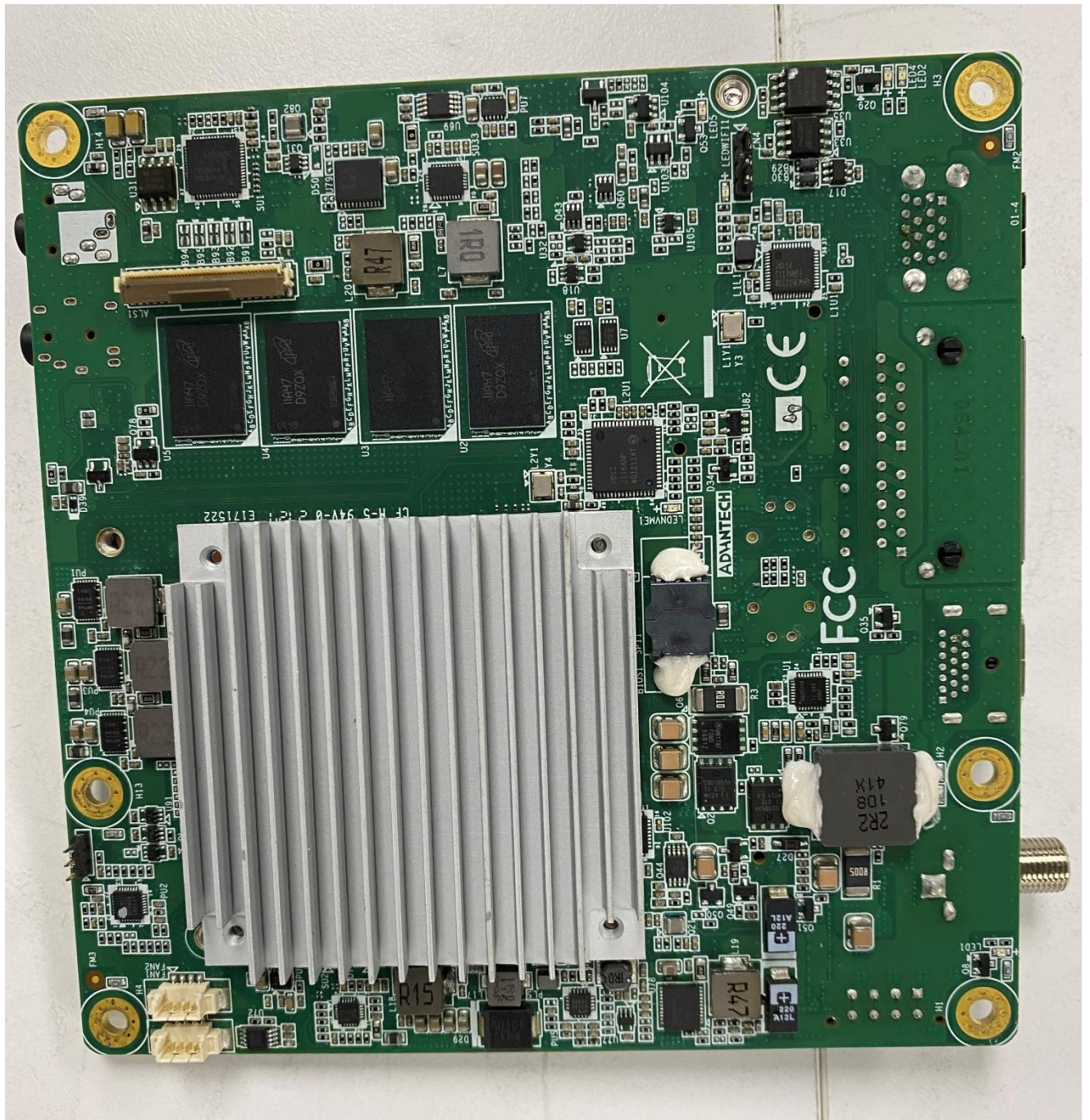
Device facing up, battery removed, screen removed, battery tray removed, endcaps detached, SBC (Single Board computer) showing.



Device facing down, battery removed, screen removed, battery tray removed, endcaps detached, I/O plate loosened.

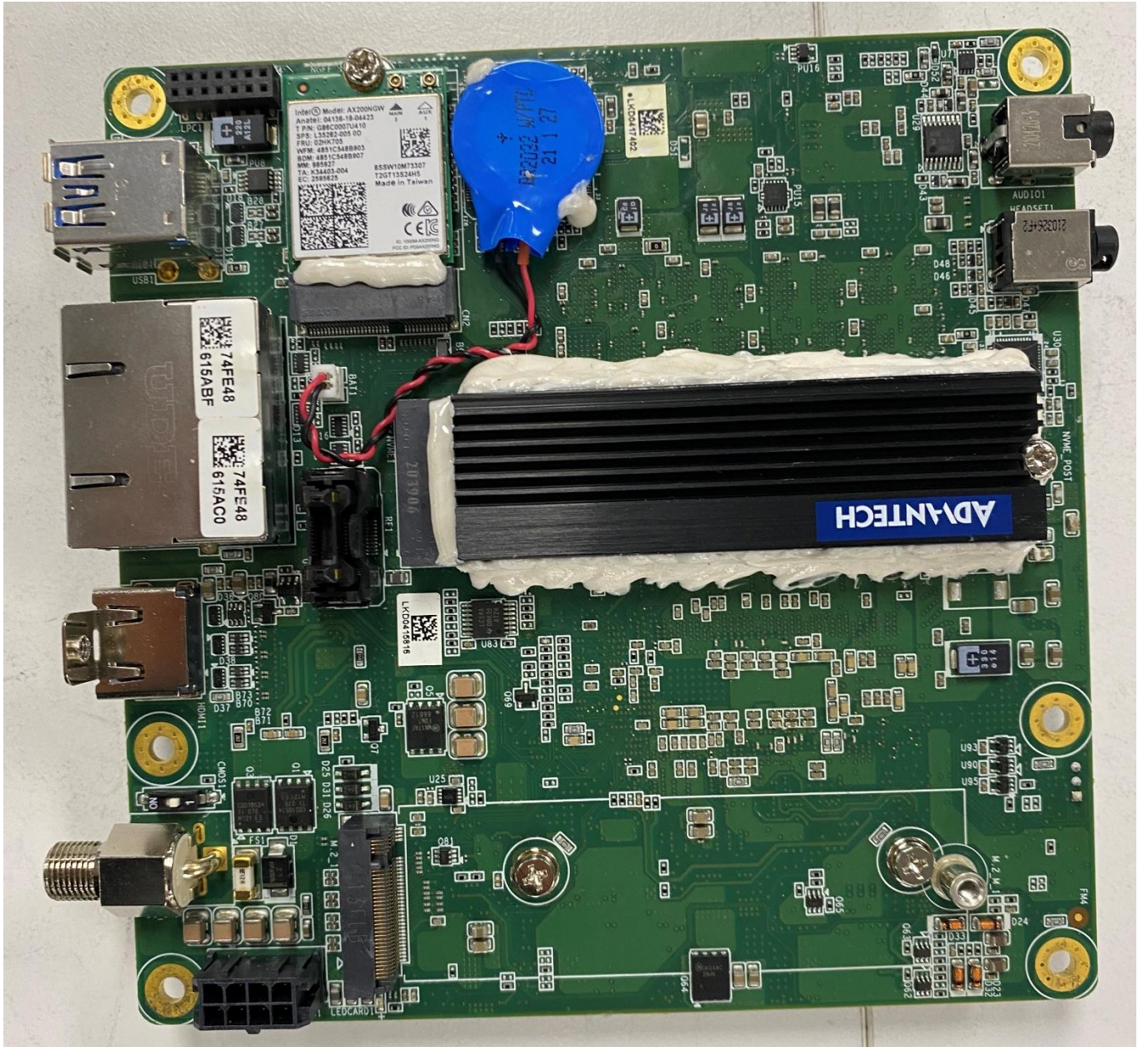


Device facing down, battery removed, screen removed, battery tray removed, endcaps detached, SBC disconnected from RF board.

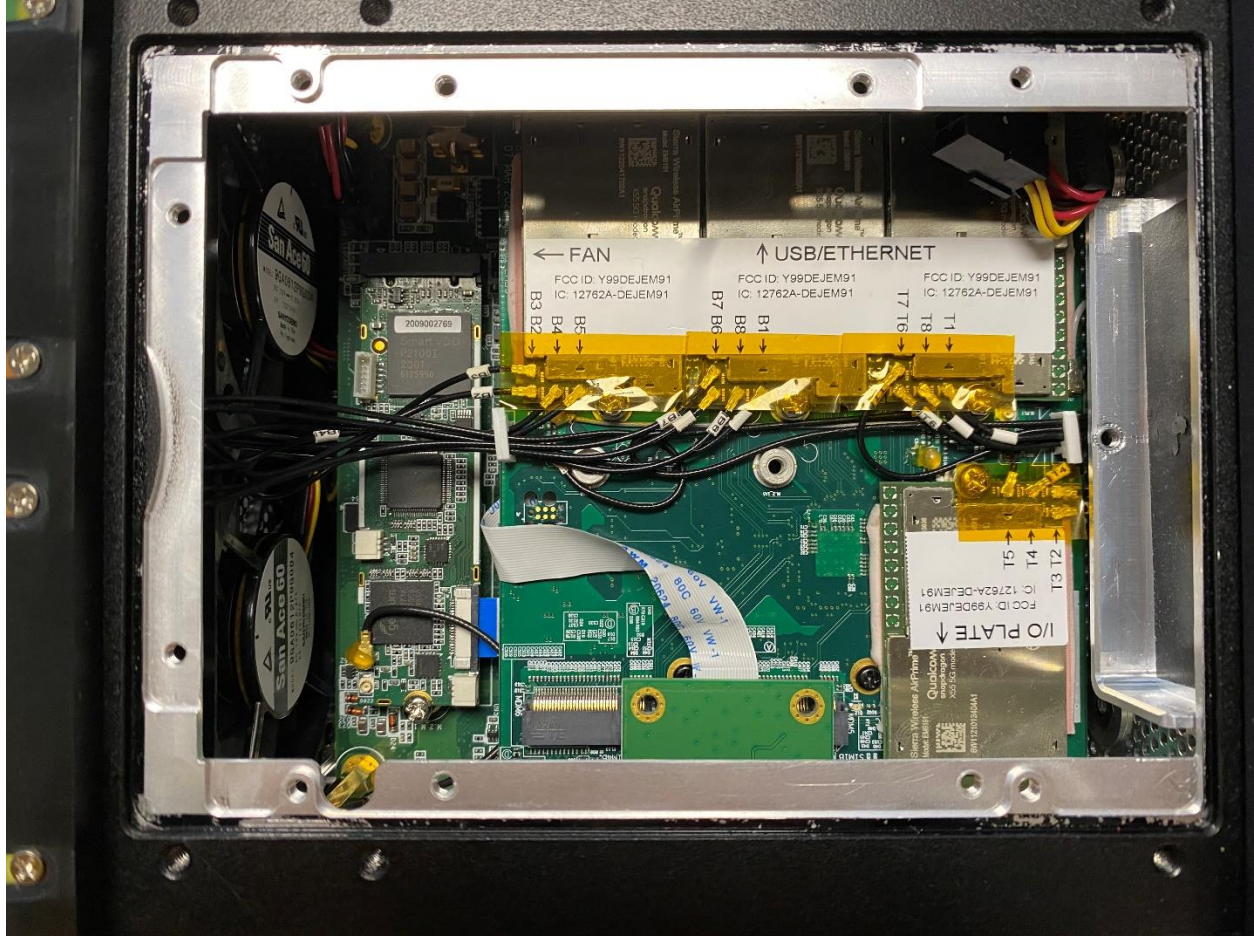


SBC – Top view

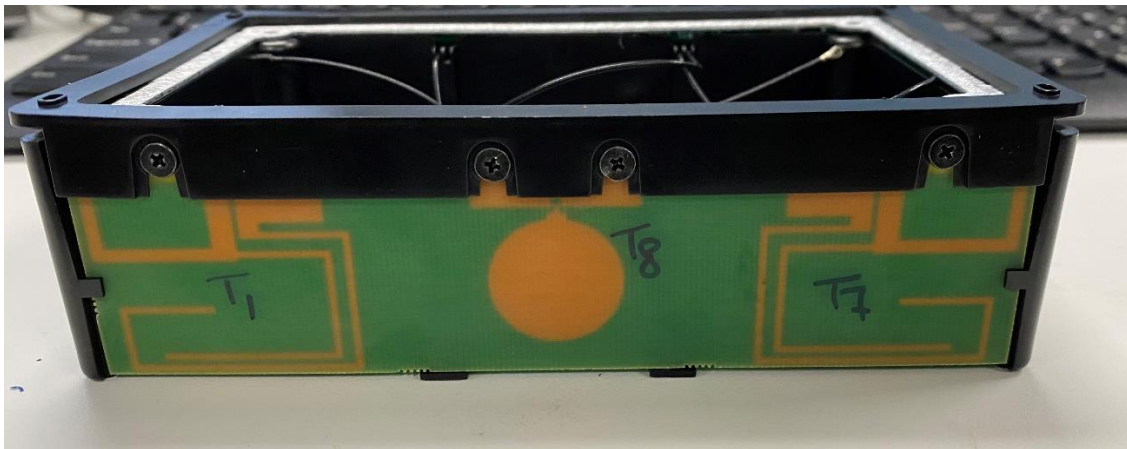
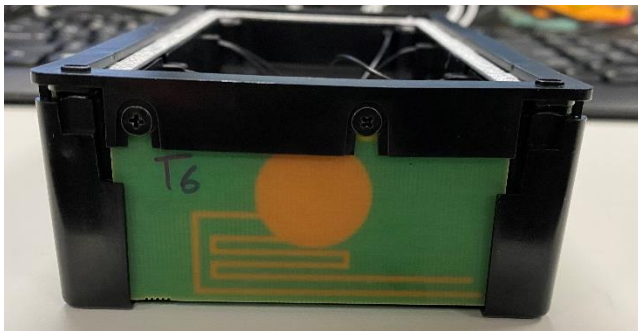
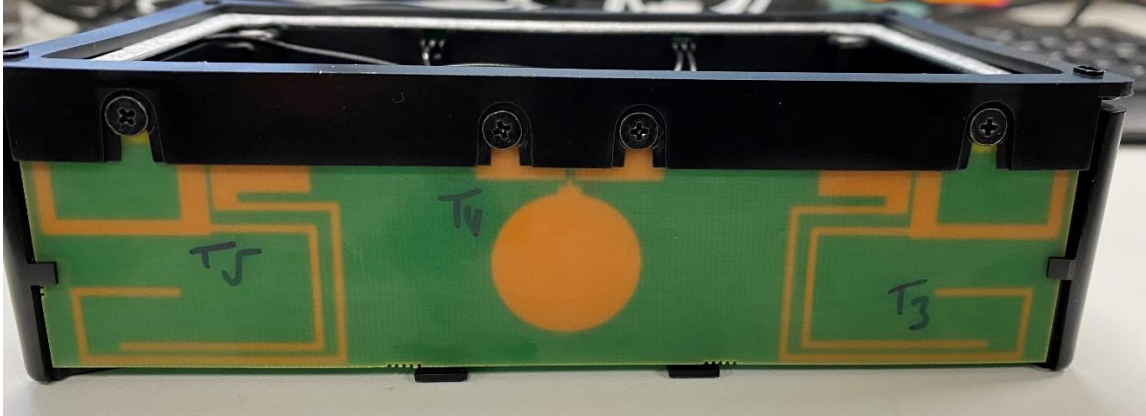




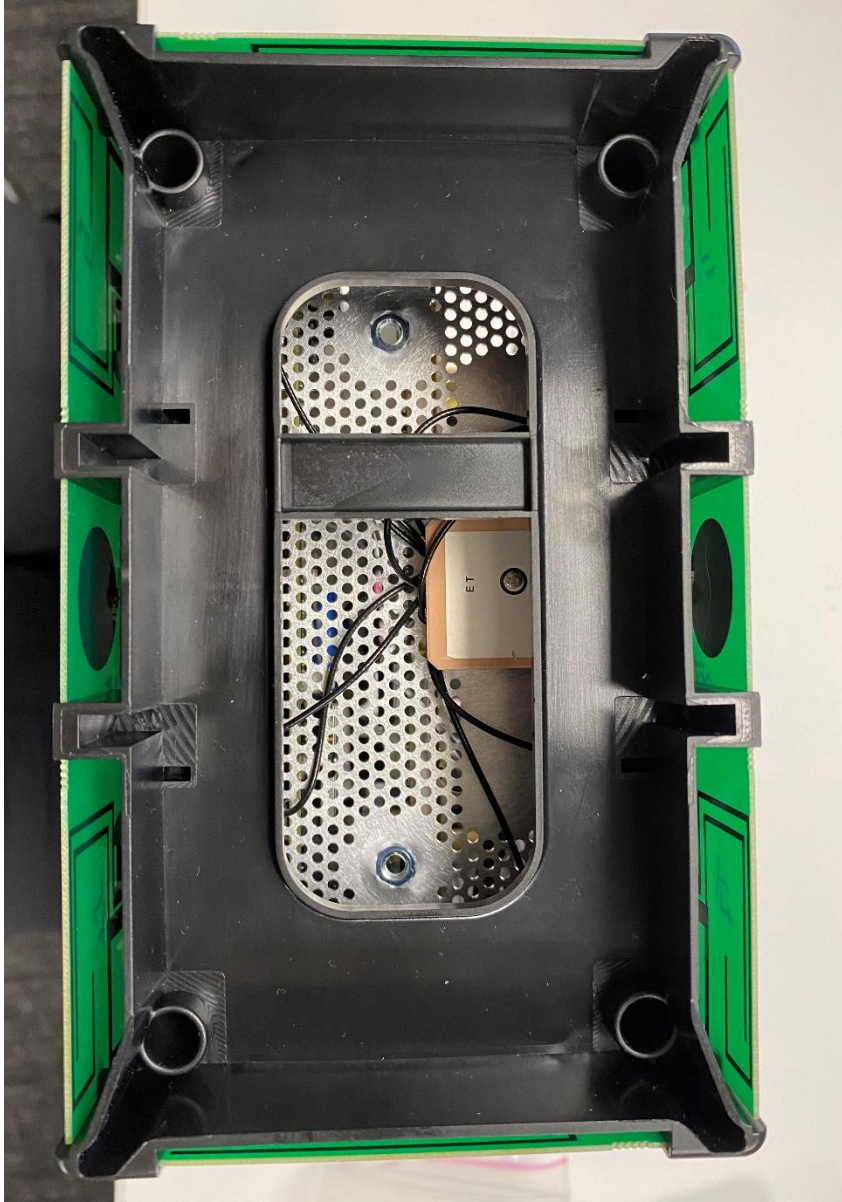
SBC – Bottom view



RF modules mounted on the RF board



Antennas assembled on the end-cap



Top View of Antennas on the unit