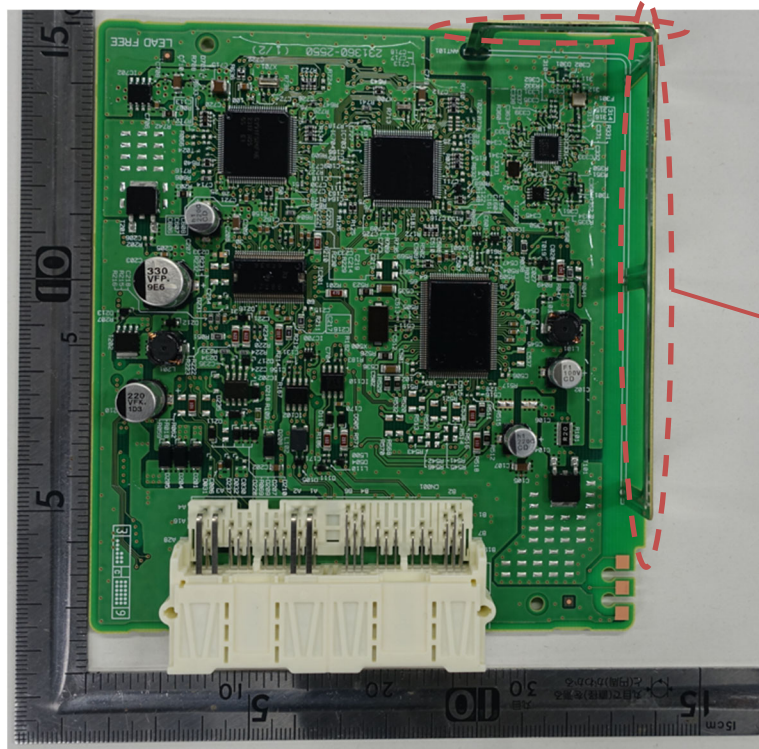


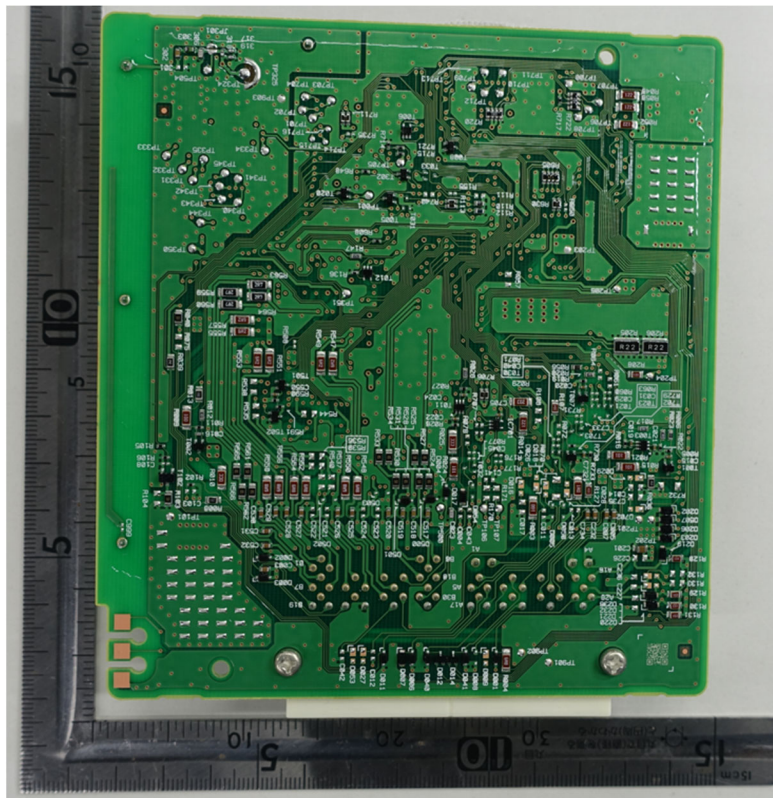
**SUBARU CORPORATION**  
**Keyless Access with Push-Button Start System**  
**Model: SU23S-1**

Internal Photos: Smart ECU



Antenna for Rx

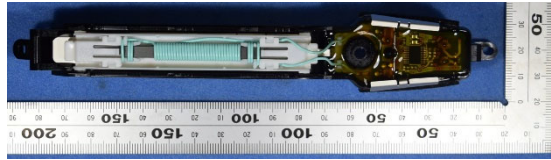
Component side



Antenna side

**SUBARU CORPORATION**  
**Keyless Access with Push-Button Start System**  
**Model: SU23S-1**

Internal Photos: Antenna (TYPE 1 model 1)



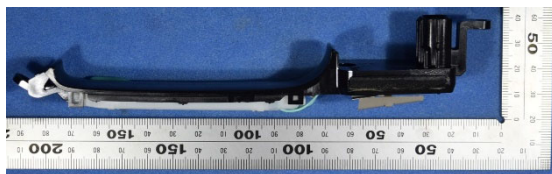
Front



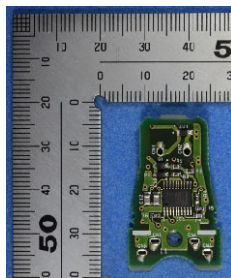
Rear



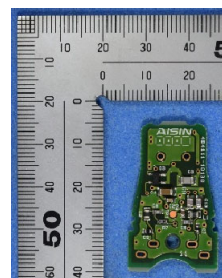
Top



Bottom



Front (PCB)



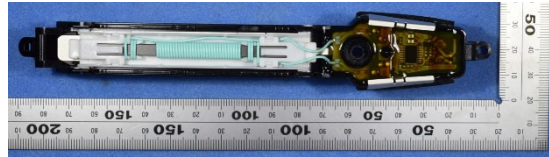
Rear (PCB)

Note:

The outer case may be changed.

**SUBARU CORPORATION**  
**Keyless Access with Push-Button Start System**  
**Model: SU23S-1**

Internal Photos: Antenna (TYPE 1 model 2)



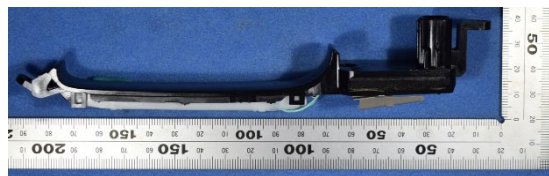
Front



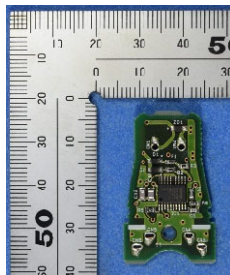
Rear



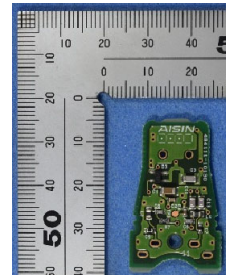
Top



Bottom



Front (PCB)



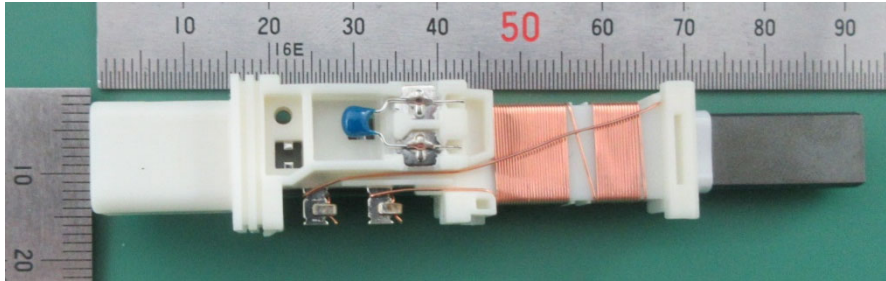
Rear (PCB)

Note:

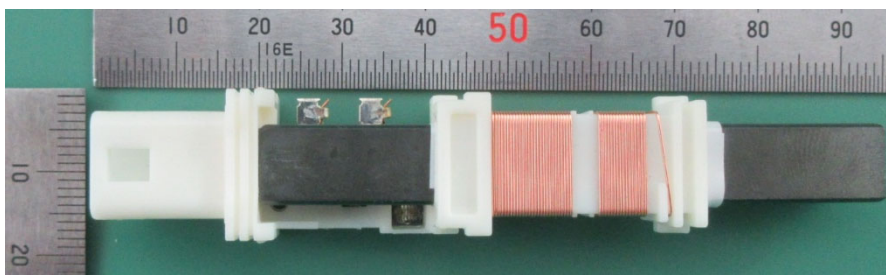
The outer case may be changed.

**SUBARU CORPORATION**  
**Keyless Access with Push-Button Start System**  
**Model: SU23S-1**

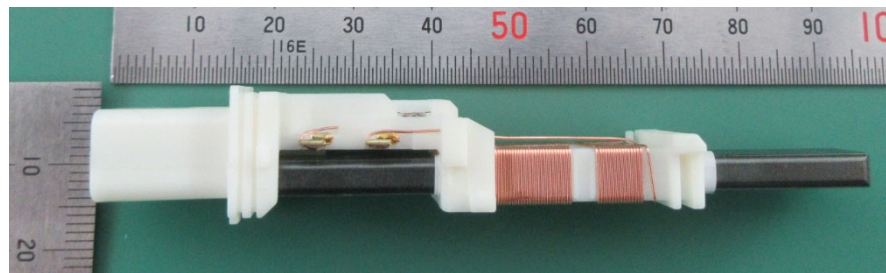
Internal Photos: Antenna (TYPE 2)



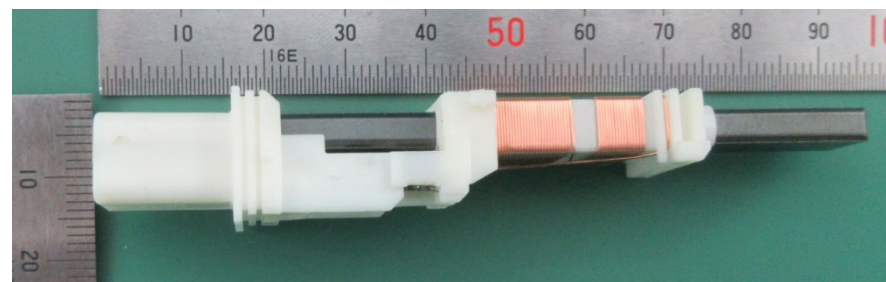
Front



Rear



Top



Bottom