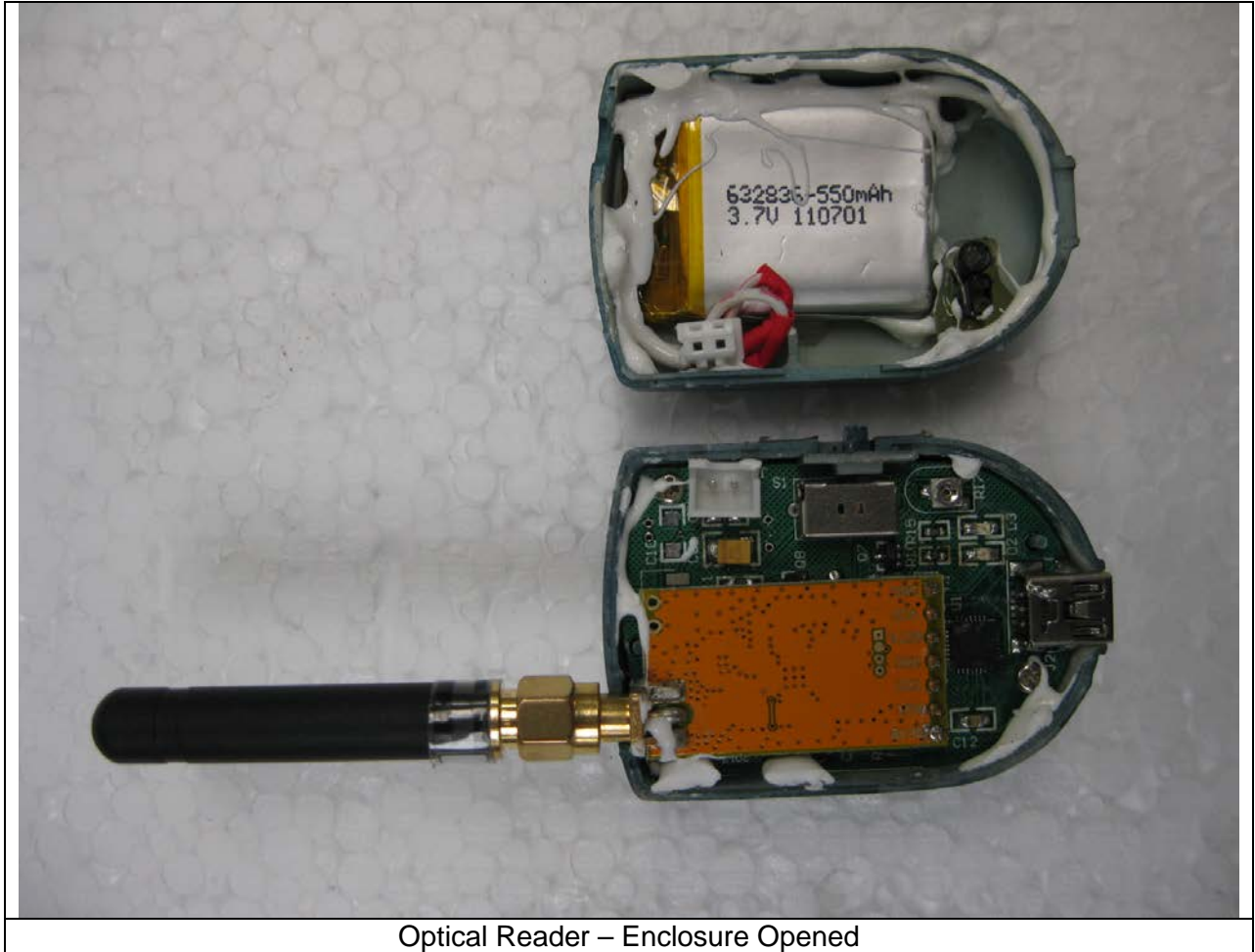
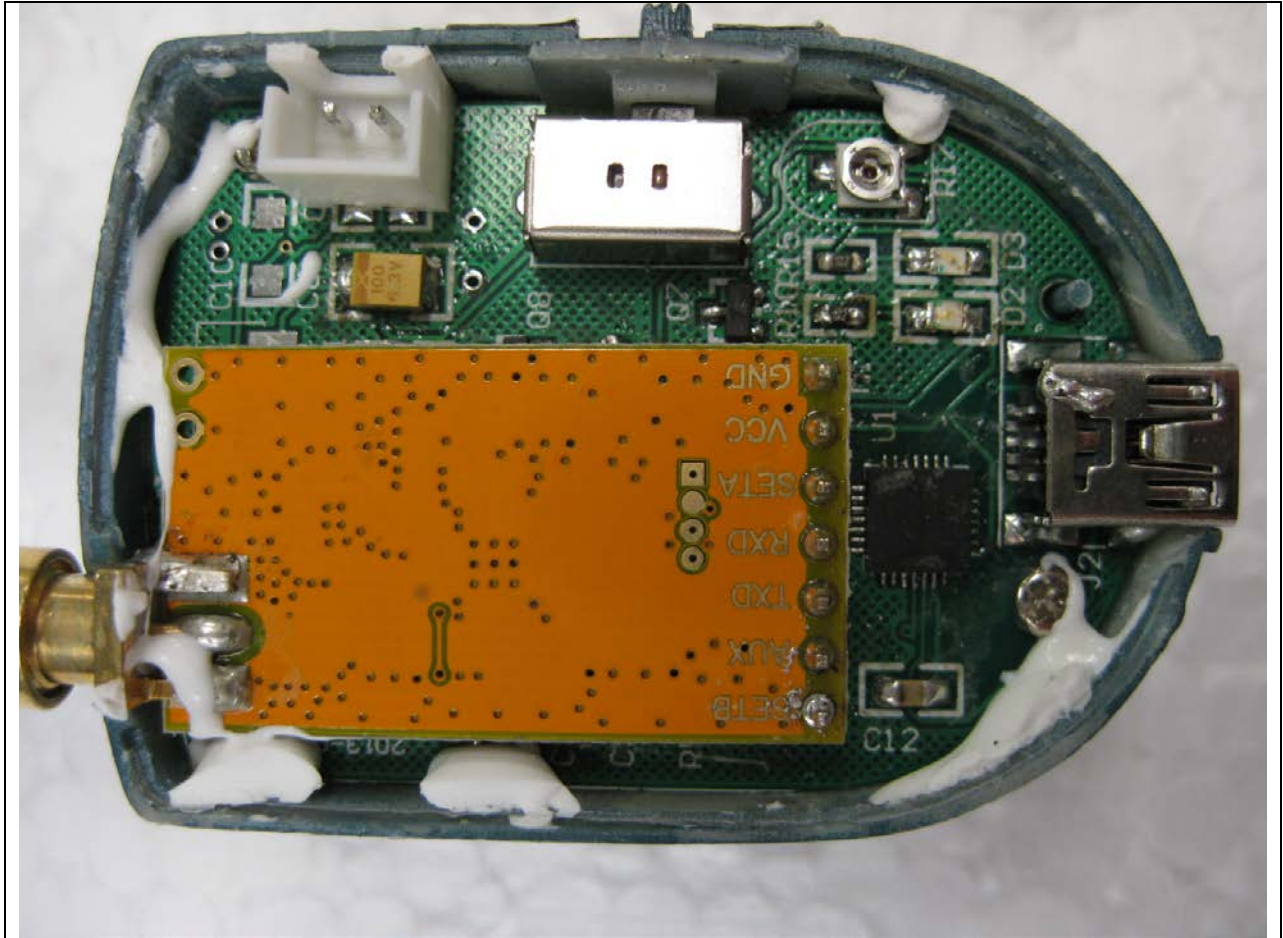


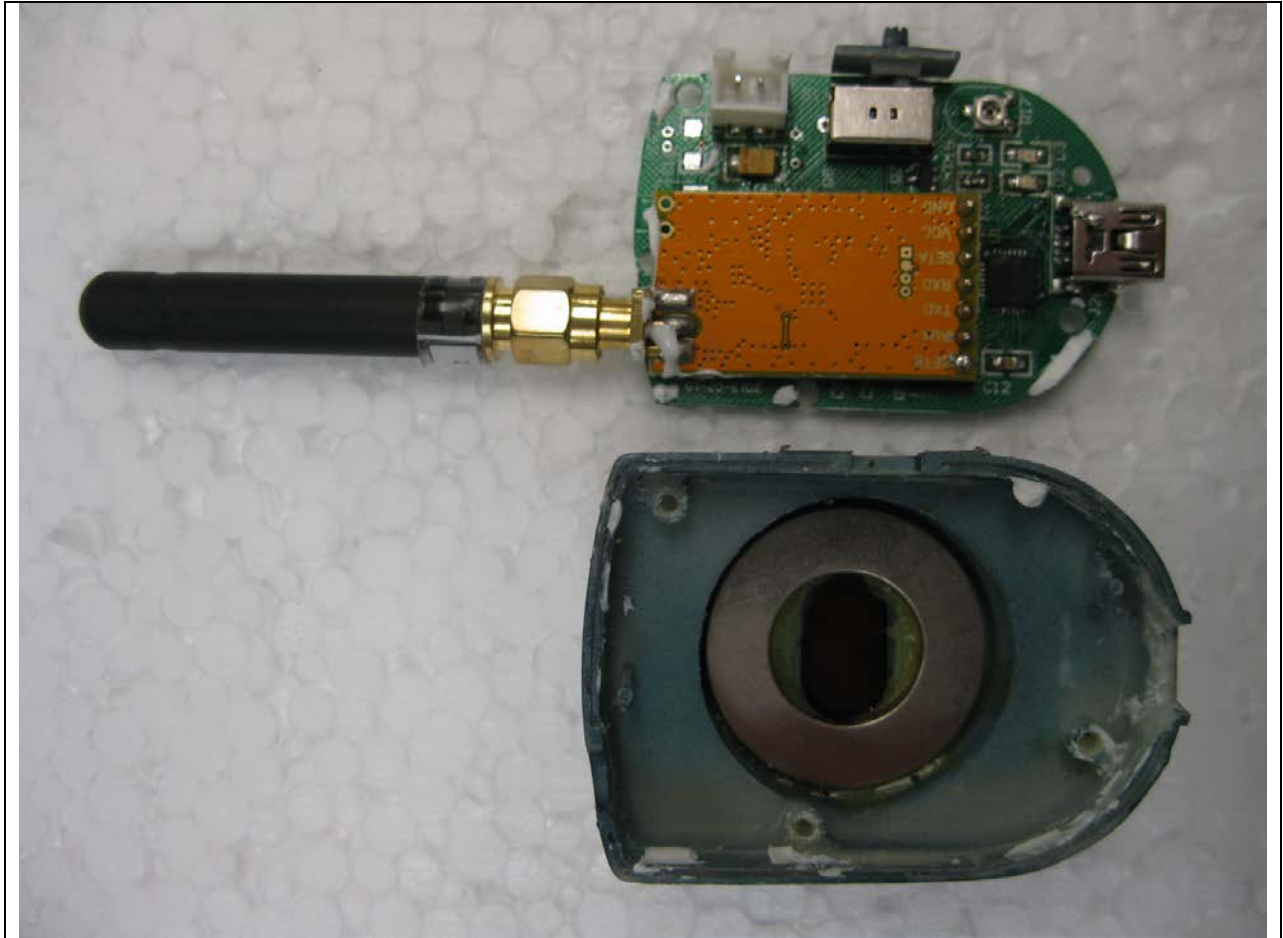
### INTERNAL PHOTOS



Optical Reader – Enclosure Opened



Optical Reader – Main Board and Radio Board Inside Enclosure



Optical Reader – Main/Radio Board next to Enclosure

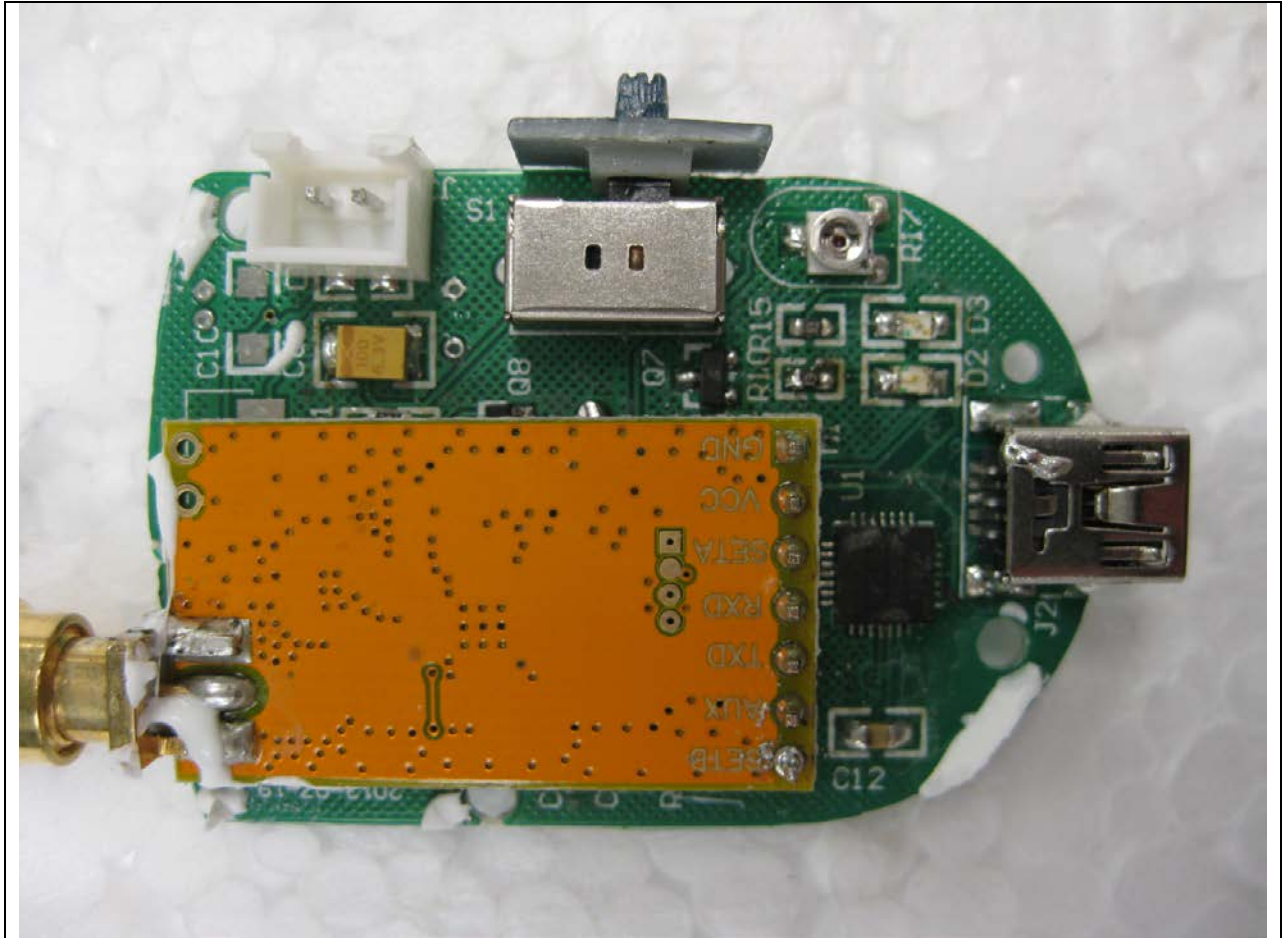


Optical Reader – Optical Reader Side of Enclosure

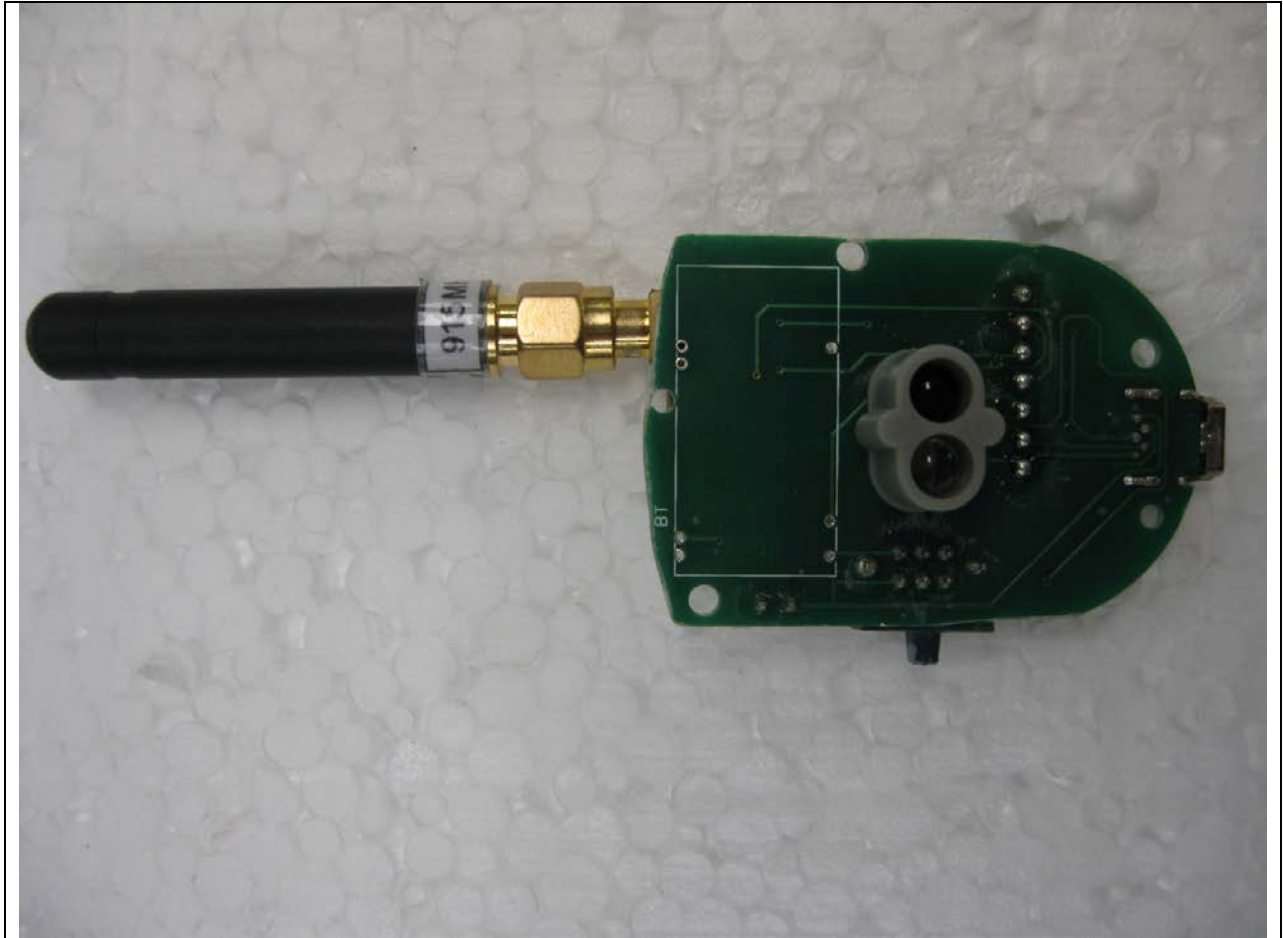




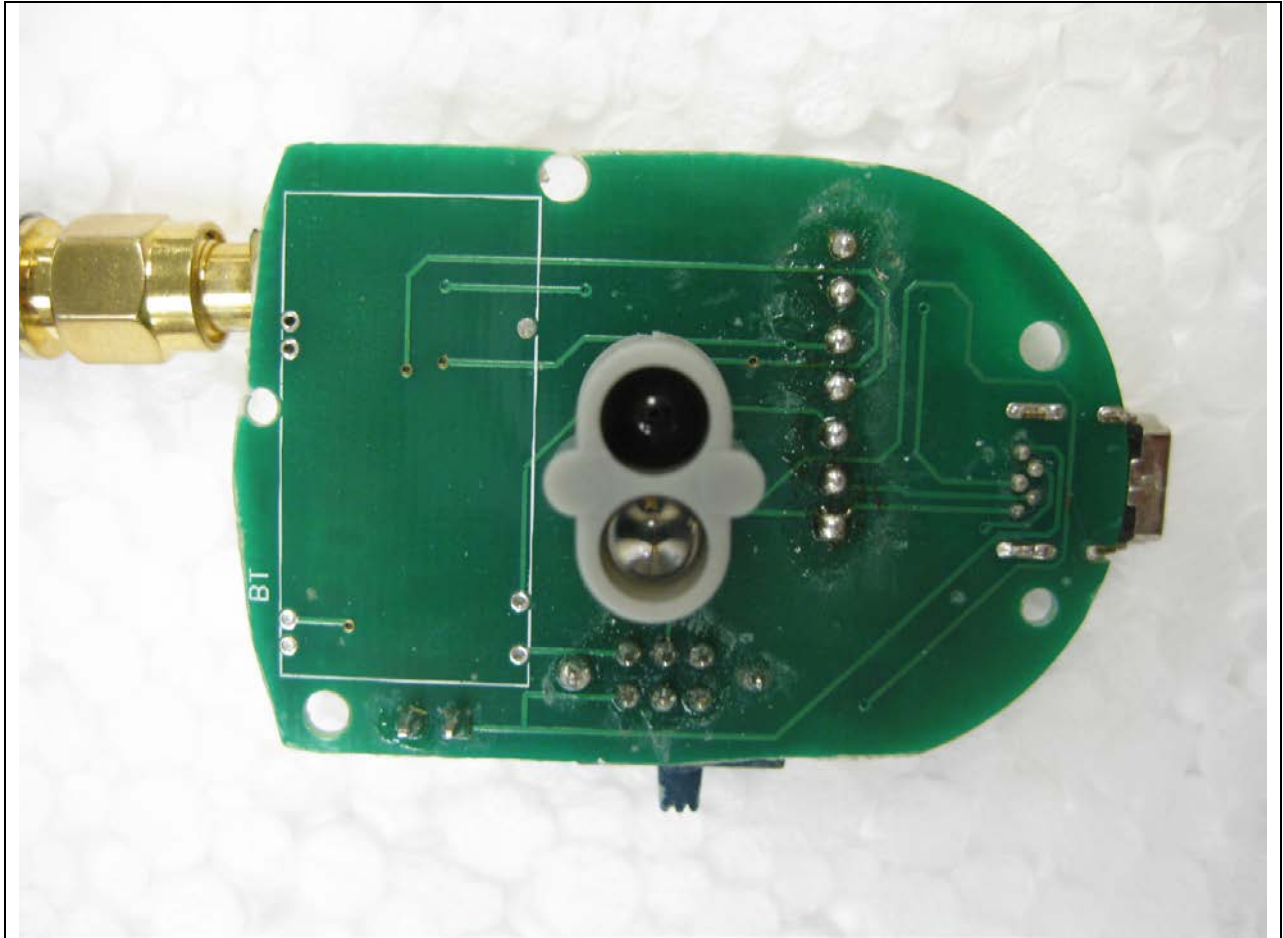
Optical Reader – PCB (Overall)



Optical Reader – Main/Radio Side of PCB (Top)

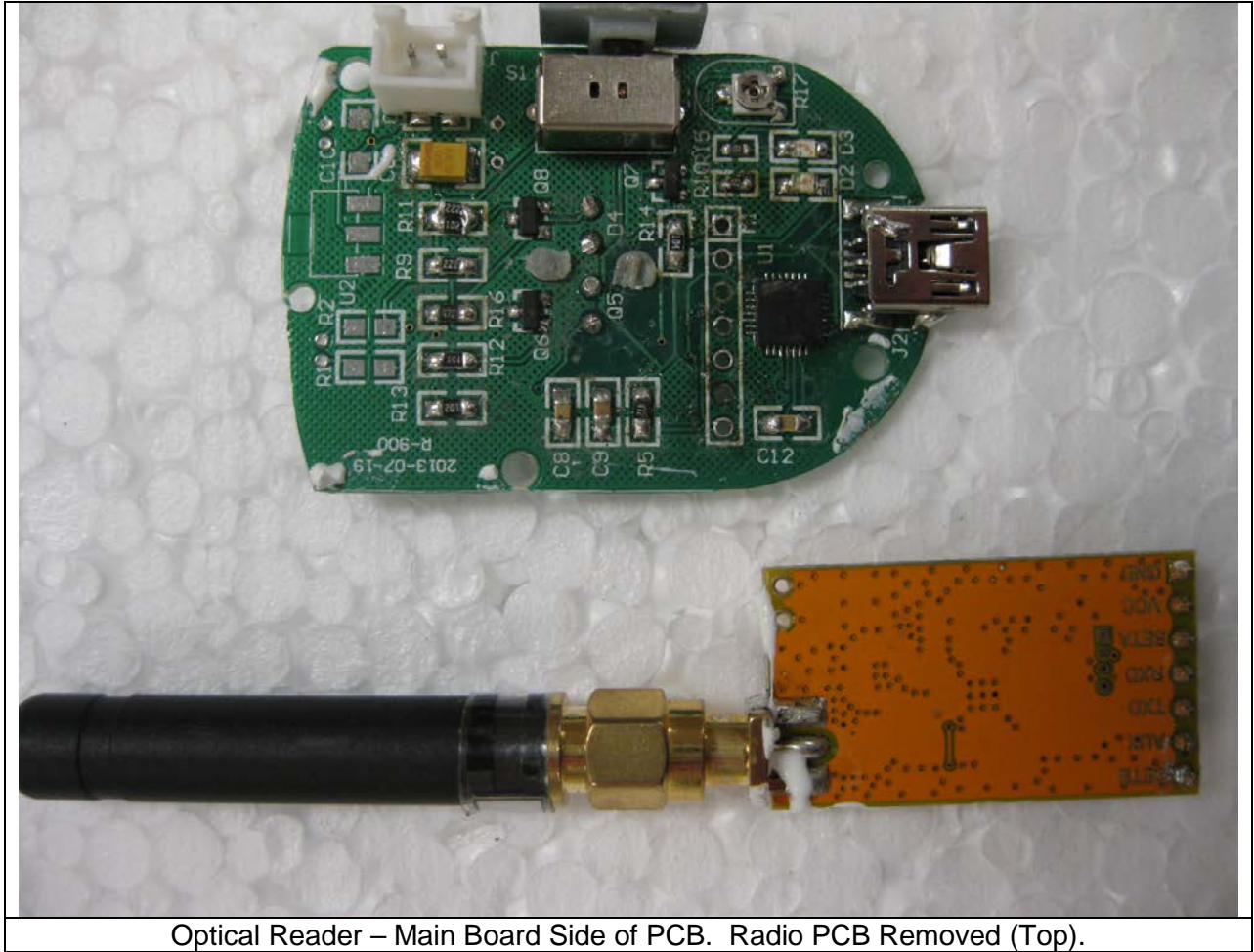


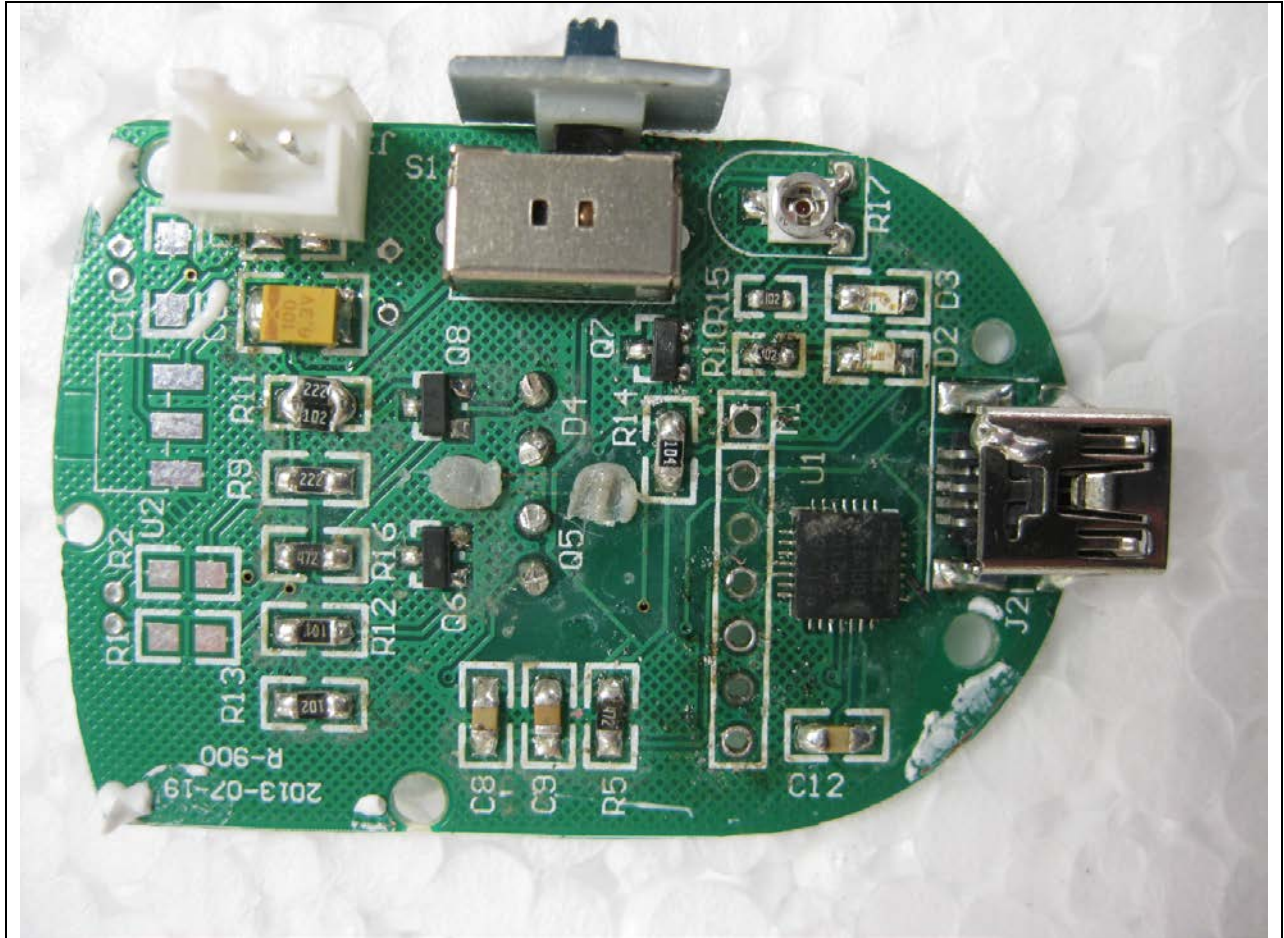
Optical Reader – Optical Reader Side of Main PCB (Bottom)



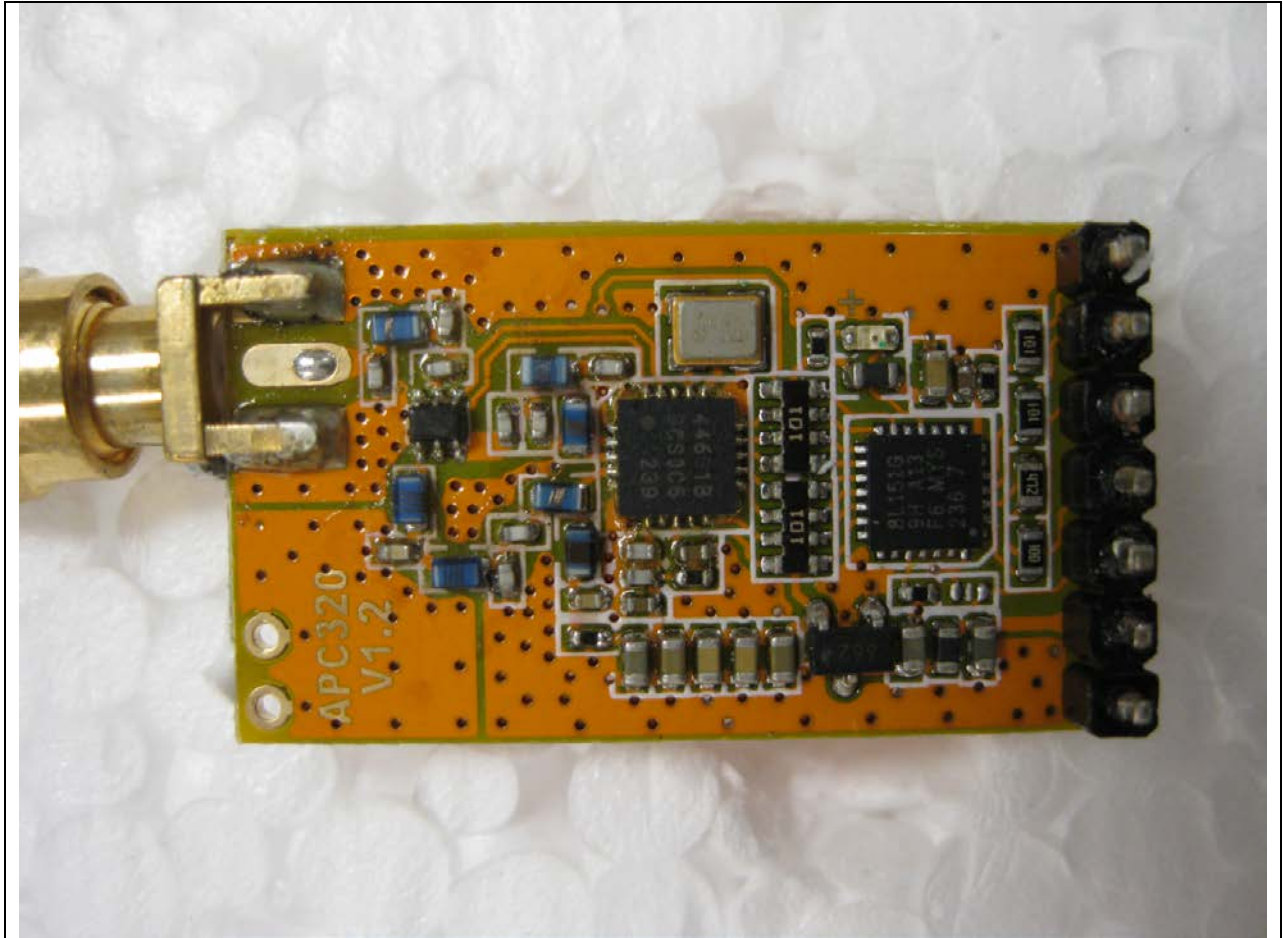
Optical Reader – Optica Reader Side of Main PCB (Bottom - Zoomed In)





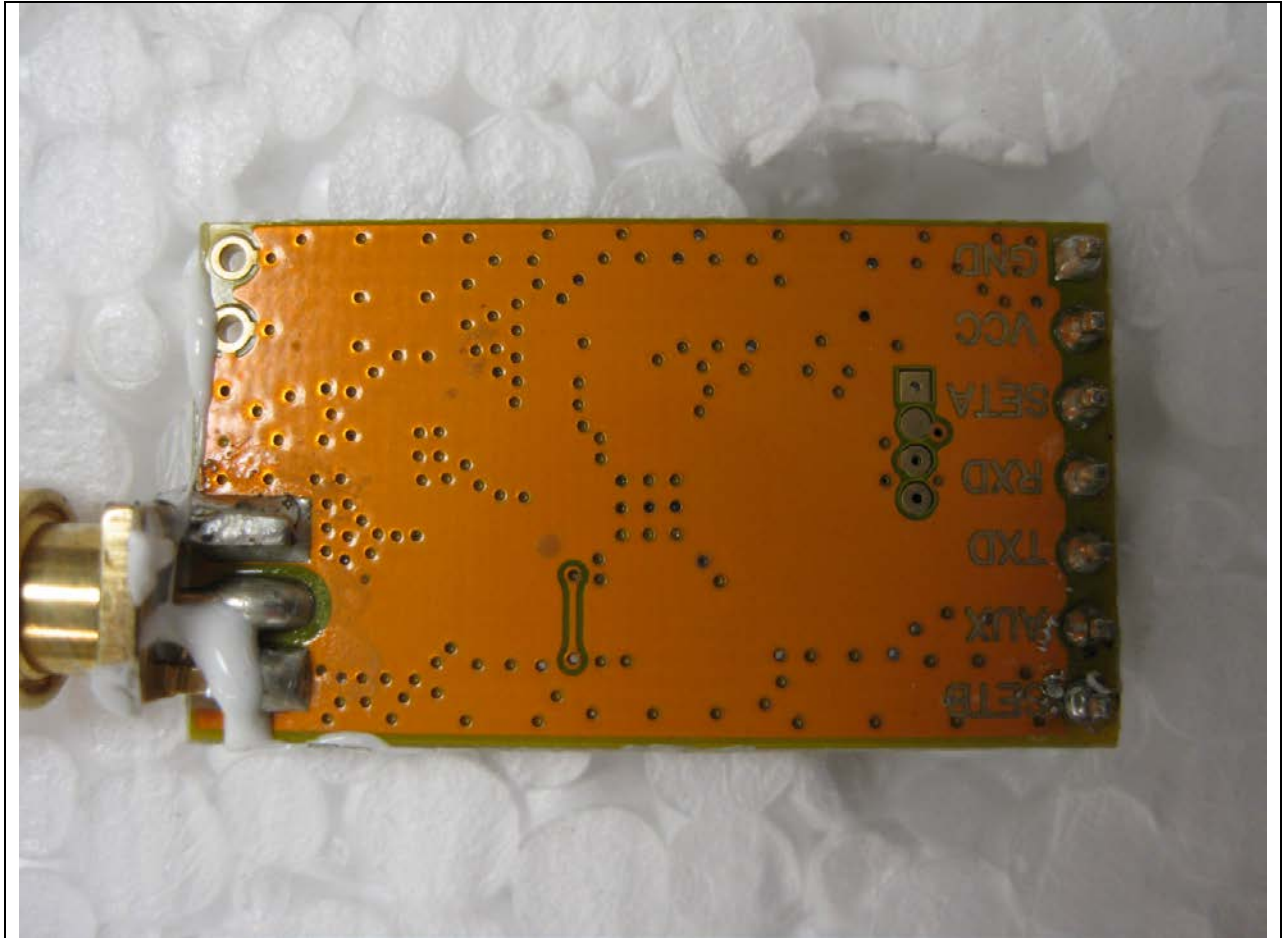


Optical Reader – Main PCB (Top Side)



Optical Reader – Radio PCB (Bottom)





Optical Reader – Radio PCB (Top)