

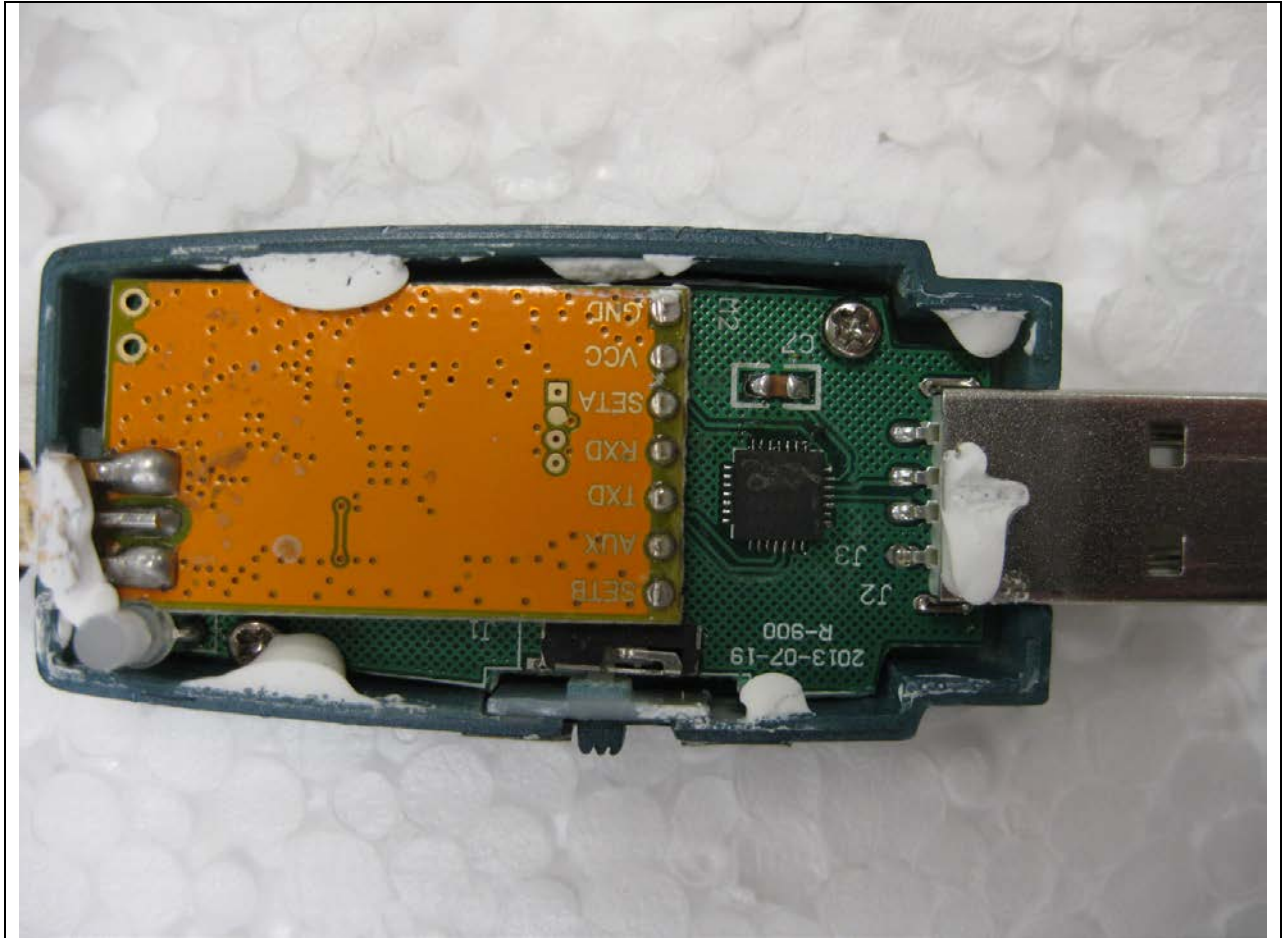
**INTERNAL PHOTOS**



RF Adapter – Enclosure Opened



RF Adapter – Inside of Enclosure Half



RF Adapter – Zoomed in View of RF Adapter



RF Adapter – PCB Removed from Enclosure



RF Adapter – Second Half of Enclosure





RF Adapter – Overall PCB (Top Side)

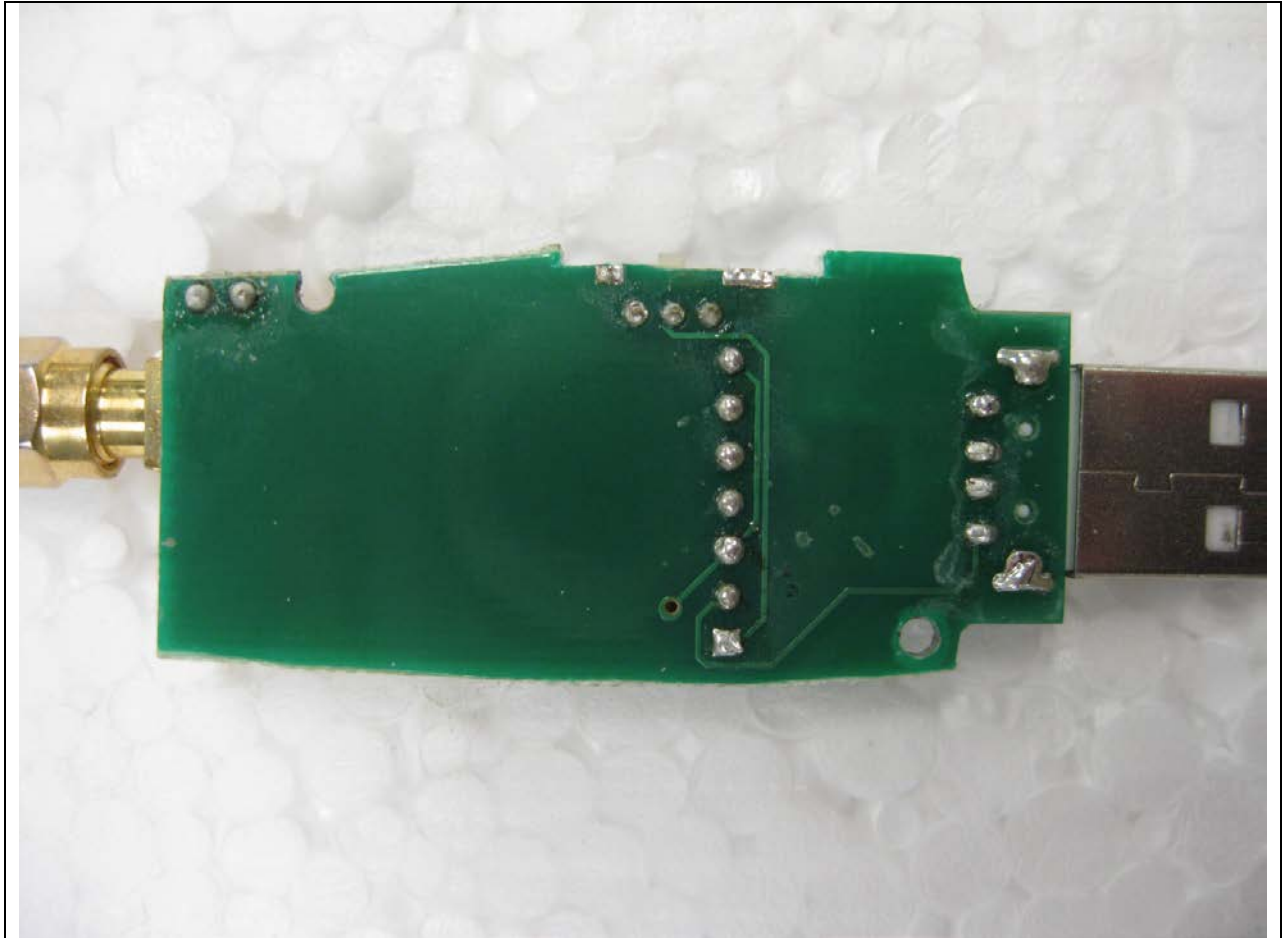


RF Adapter – Zoomed in PCB (Top Side)



RF Adapter – Overall PCB (Bottom Side)

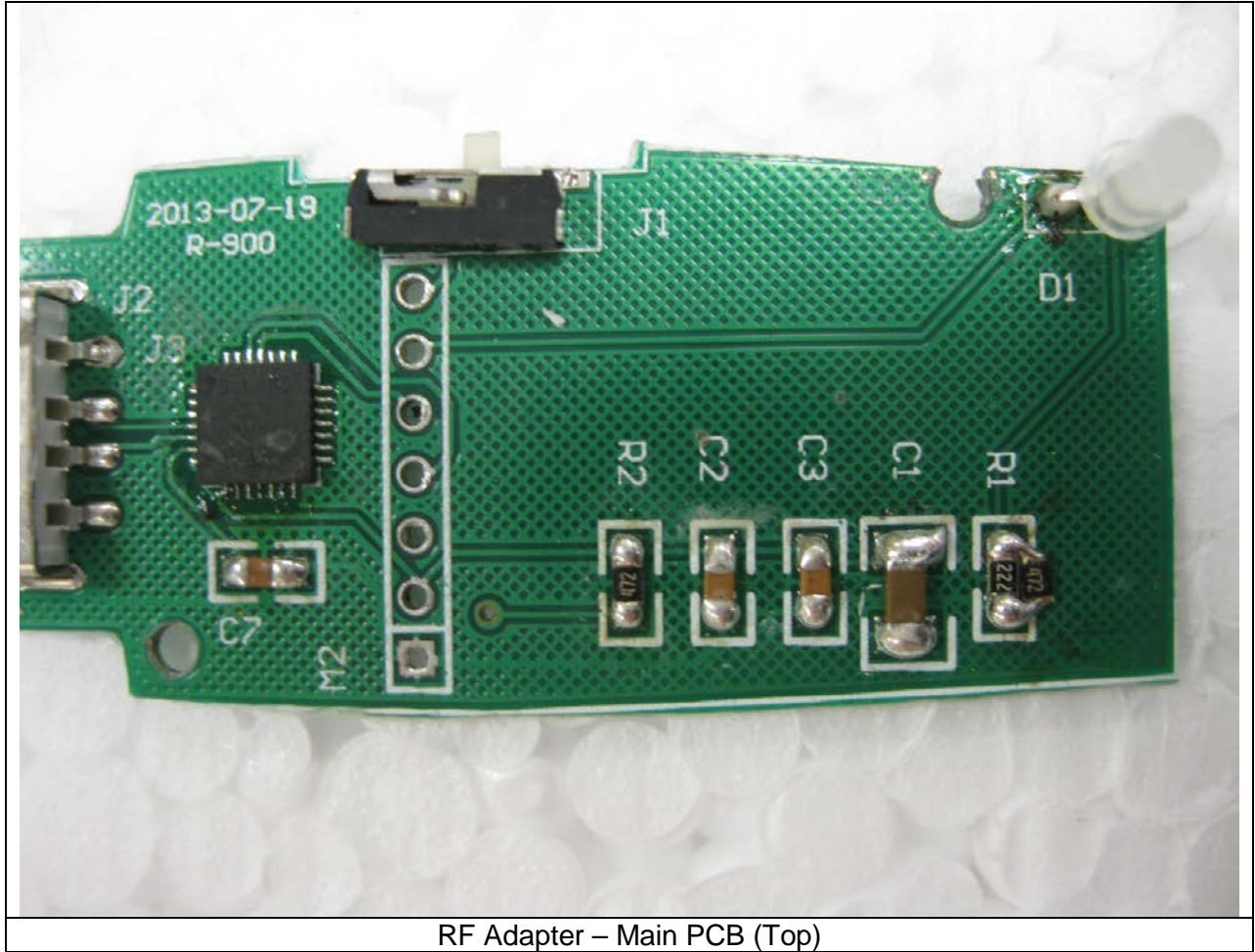




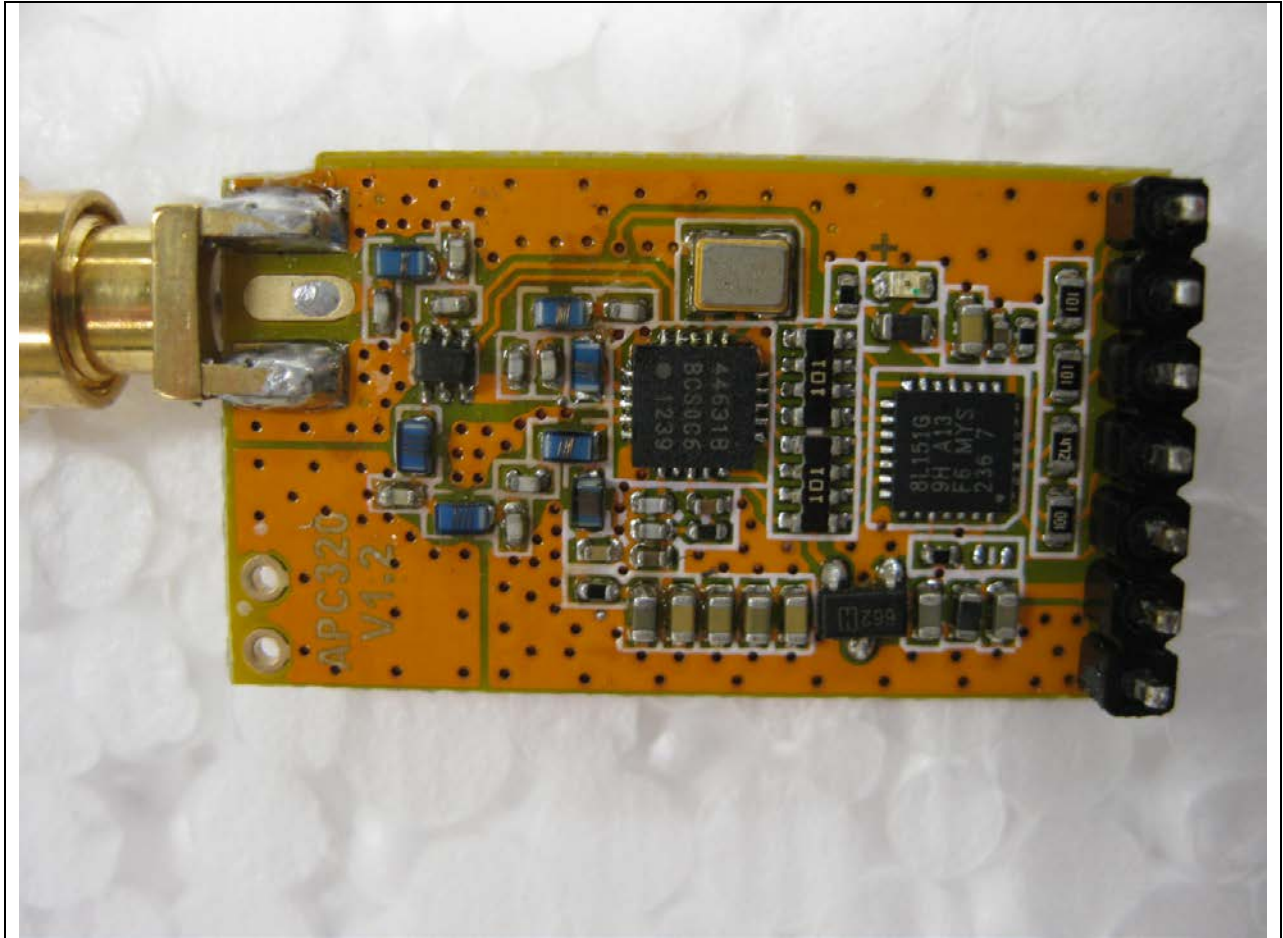
RF Adapter – Zoomed in PCB (Bottom Side)



RF Adapter – Radio PCB Disconnected from Main PCB

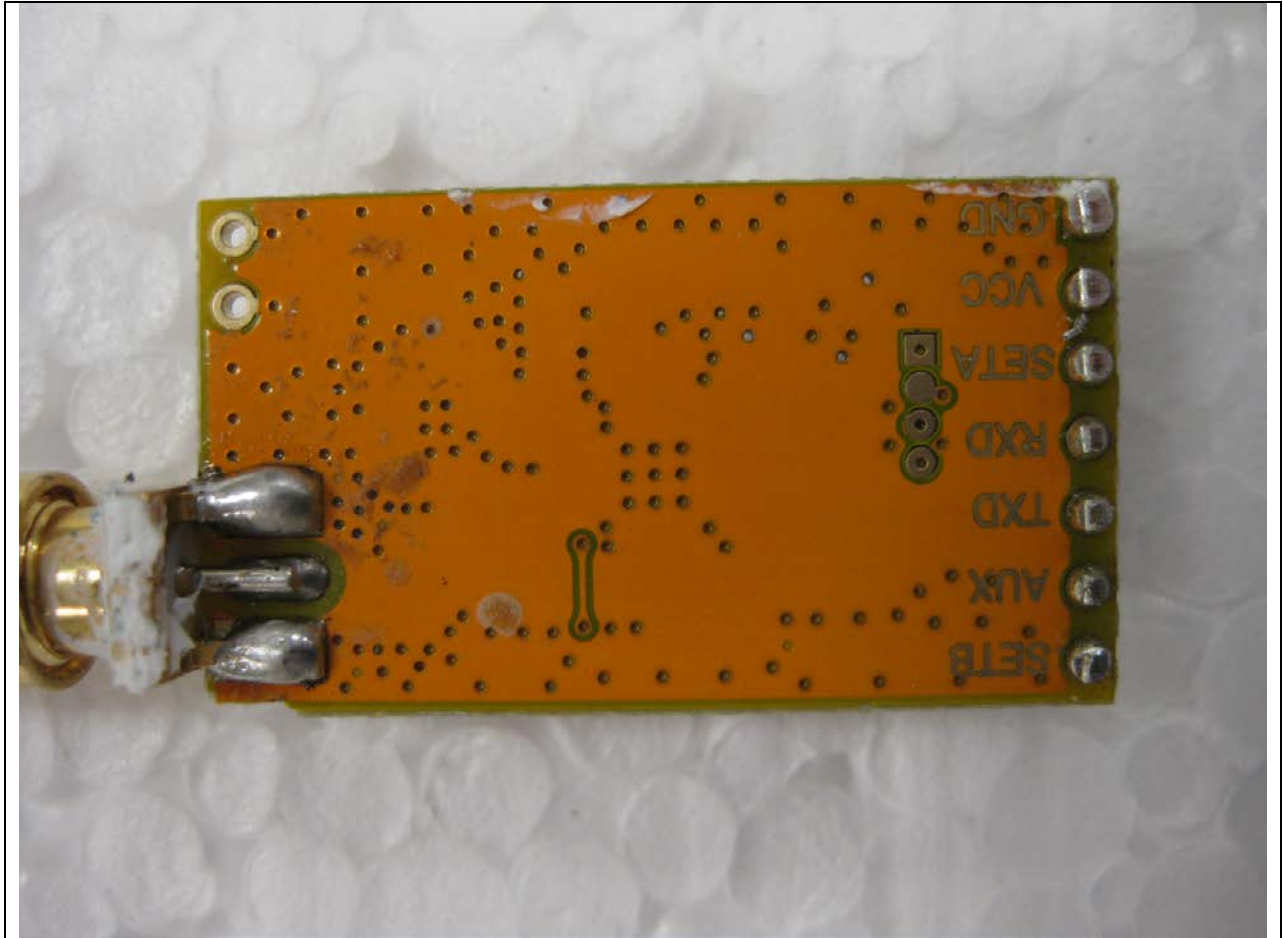


RF Adapter – Main PCB (Top)



RF Adapter – Radio PCB (Bottom)





RF Adapter – Radio PCB (Top)