

Copper Thickness
 0.5 \approx 0.69 MILs / 17.5 μ m
 1oz \approx 1.37 MILs / 35 μ m
 2oz \approx 2.74 MILs / 70 μ m

MICROSTRIP TRACE IMPEDANCE
 (Per ADI App Note MT-094)

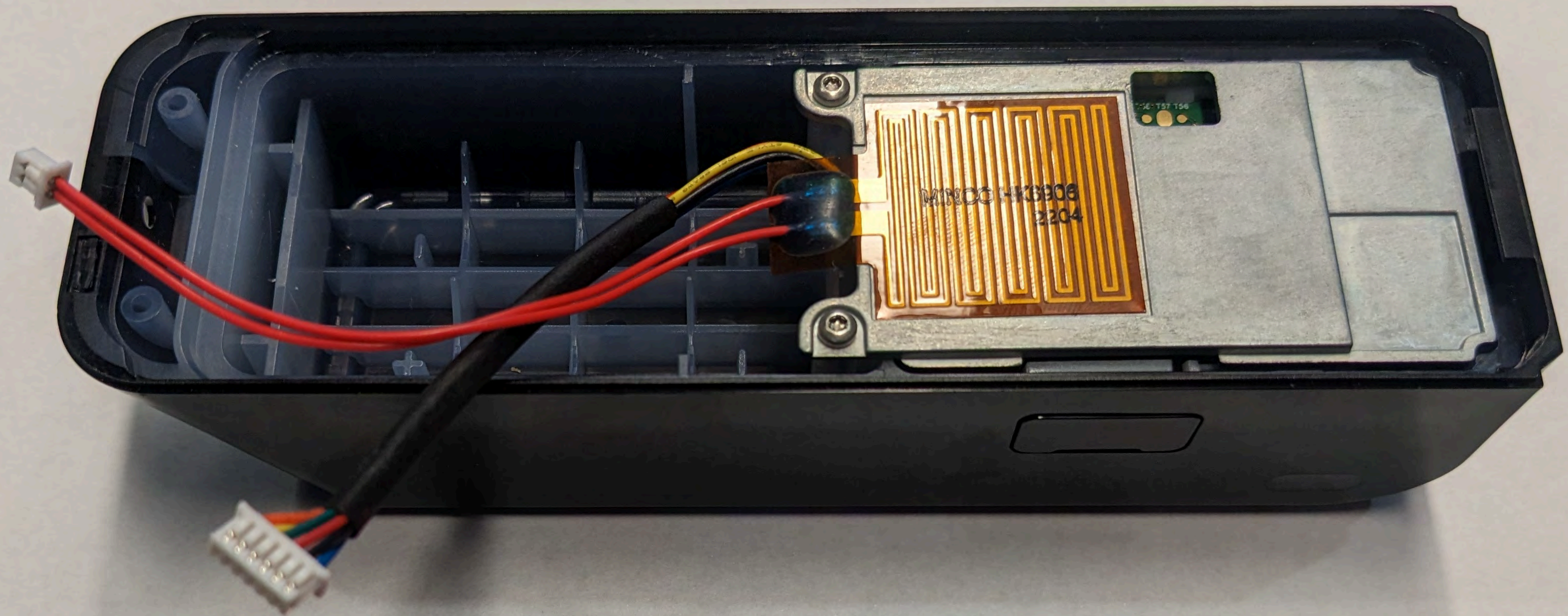
$Z = \frac{87}{\sqrt{\epsilon_r + 1.41}} \ln \left[\frac{5.98H}{0.8W + T} \right]$

$\epsilon_r =$ Dielectric * Trace ** Ground Plane

Digi-Key's Value Added Services:
 Custom Enclosures: Holes, Printing, Colors, Materials, Etc. - Custom Battery Packs
 Programming: MCU, PROM, CPLD, & OSC Frequency - Custom Cable Assemblies
 ...And More custom.orders@digkey.com WWW.DIGIKEY.COM

MIL RULE
 PCB-RULER-ND
Digi-Key
 ELECTRONICS
 30MIL • 40MIL • 60MIL • 80MIL
 BURIED VIA
 TEST POINTS
 JUL 2017

FCC ID: VC3-DR100V3
 IC ID: 7160A-DR100V3



Copper Thickness
 0.5 \approx 0.69 MILs / 17.5 μ m
 1oz \approx 1.37 MILs / 35 μ m
 2oz \approx 2.74 MILs / 70 μ m

MACHINE SCREW HOLES-TIGHT

M6	M5	M4	M3	M2.5	M2
ϕ 252MIL	209	169	126	106	86.6
#2	#4	#6	#8	#10	ϕ 257MIL
89MIL	116	144	170	196	

MICROSTRIP TRACE IMPEDANCE
 (Per ADI App Note MT-094)

$$Z = \frac{87}{\sqrt{\epsilon_r + 1.41}} \ln \left[\frac{5.98H}{(0.8W + T)} \right]$$

ϵ_r = Dielectric * Trace ** Ground Plane

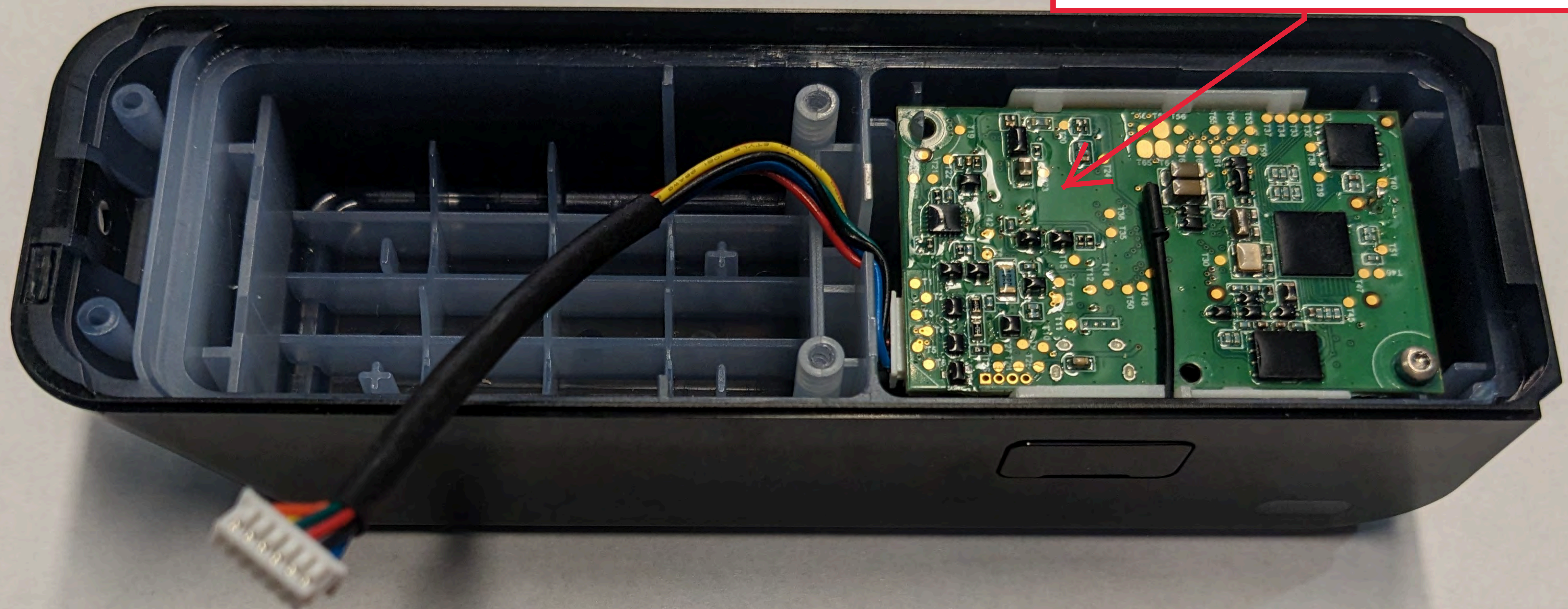
Digi-Key's Value Added Services:
 Custom Enclosures: Holes, Printing, Colors, Materials, Etc - Custom Battery Packs
 Programming: MCU, PROM, CPLD, & OSC Frequency - Custom Cable Assemblies
 ...And More custom.orders@digkey.com WWW.DIGIKEY.COM

PCB-RULE

Digi-KEY

30MIL • 40MIL
 BURIED VIA

FCC ID: VC3-DR100V3
 IC ID: 7160A-DR100V3
 (Contains: FCC ID: Y88-MBM1CC2640)
 (Contains: IC ID: 9504A-MBM1CC2640)



Copper Thickness
 0.5 \approx 0.69 MILs / 17.5 μ m
 1oz \approx 1.37 MILs / 35 μ m
 2oz \approx 2.74 MILs / 70 μ m

MIL RULE

MICROSTRIP TRACE IMPEDANCE
 (Per ADI App Note MT-094)

$Z = \frac{87}{\sqrt{\epsilon_r + 1.41}} \ln \left[\frac{5.98H}{0.8W + T} \right]$

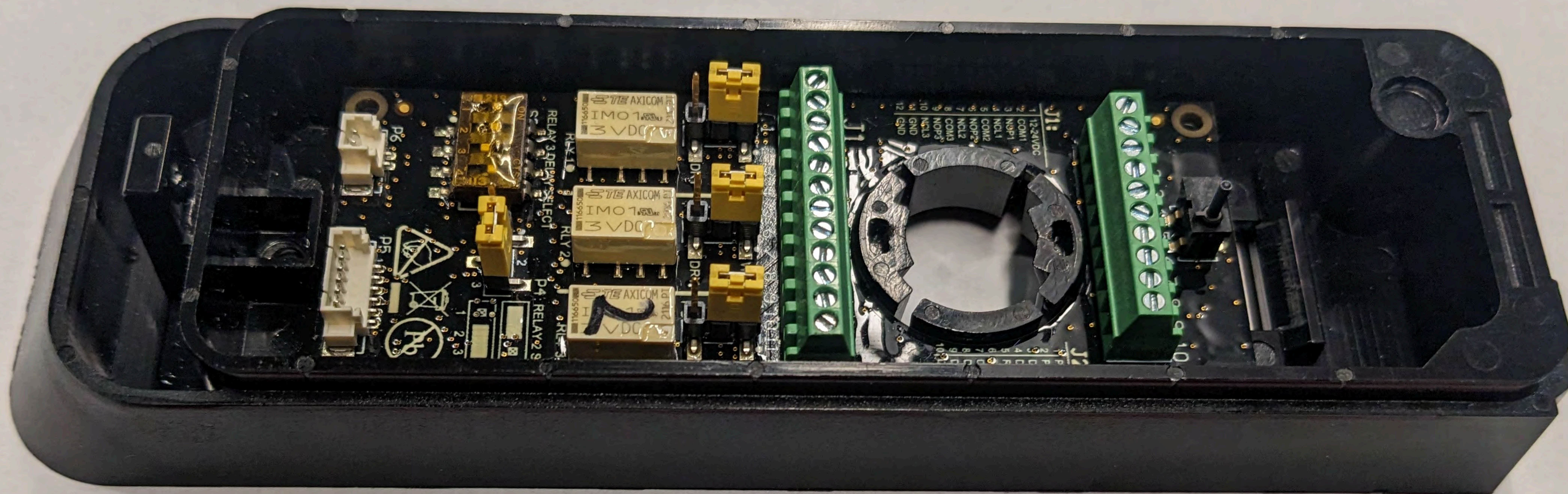
$\epsilon_r =$ Dielectric * Trace ** Ground Plane

Digi-Key's Value Added Services:
 Custom Enclosures: Holes, Printing, Colors, Materials, Etc. - Custom Battery Packs
 Programming: MCU, PROM, CPLD, & OSC Frequency - Custom Cable Assemblies
 ...And More custom.orders@digkey.com WWW.DIGIKEY.COM

PCB-RULER
Digi-Key
 ELECTRONICS

TEST P

FCC ID: VC3-DR100V3
 IC ID: 7160A-DR100V3



Copper Thickness
 0.5oz ≅ 0.69 MILs / 17.5 μm
 1oz ≅ 1.37 MILs / 35 μm
 2oz ≅ 2.74 MILs / 70 μm

MIL RULE **PCB-RULER**

Digi-Key ELECTRONICS

MICROSTRIP TRACE IMPEDANCE
 (Per ADI App Note MT-094)

$Z = \frac{87}{\sqrt{\epsilon_r + 1.41}} \ln \left[\frac{5.984}{(0.8W + T)} \right]$

$\epsilon_r = \text{Dielectric}$ * Trace ** Ground Plane

Digi-Key's Value Added Services:
 Custom Enclosures: Holes, Printing, Colors, Materials, Etc. - Custom Battery Packs
 Programming: MCU, PROM, CPLD, & OSC Frequency - Custom Cable Assemblies
 ...And More custom.orders@digkey.com WWW.DIGIKEY.COM

THICKNESS=HEIGHT / 1

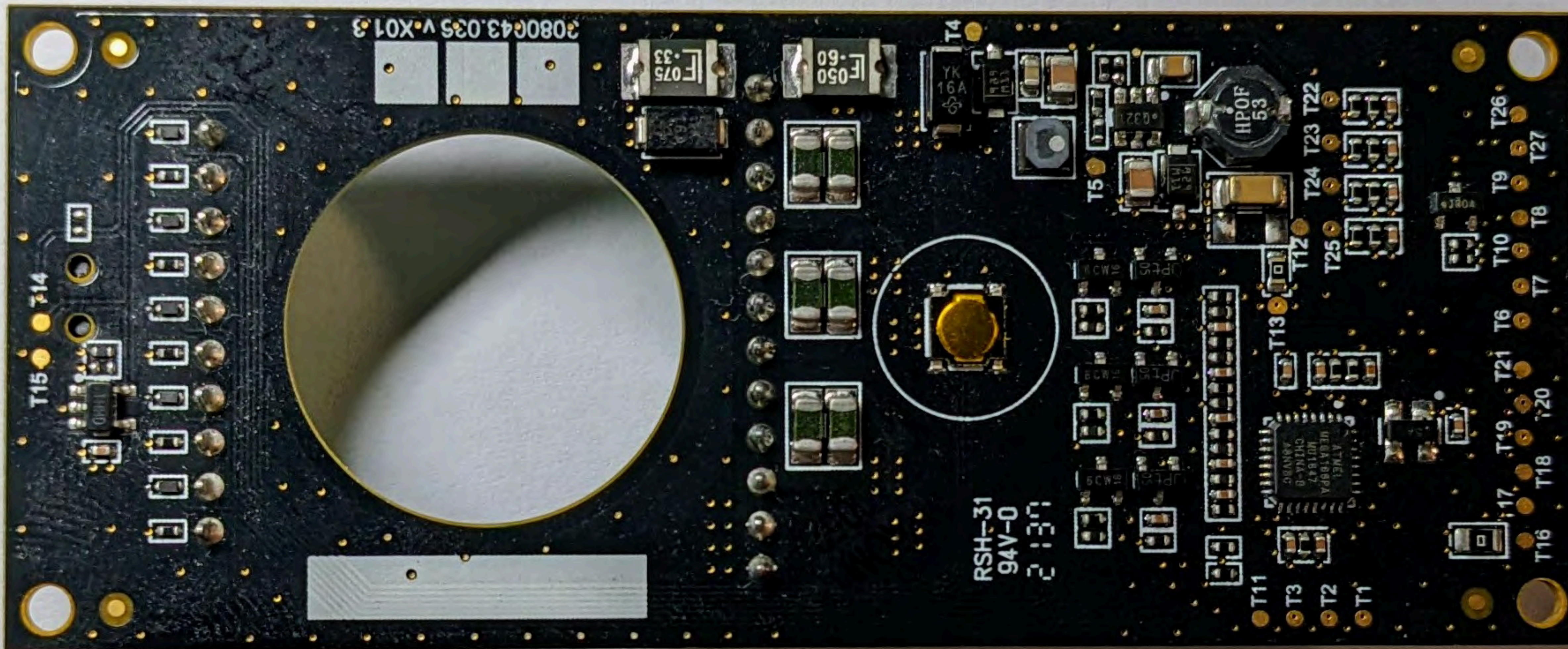
STROKE FONT HEIGHT

THICKNESS=HEIGHT / 10

PNP IC **P-CH ID (ENH)**

NPN IC **N-CH IS (ENH)**

BURIED VIA **TEST**



3080G43.035 V.X01.3

F 075
-33

F 050
-60

T4

YK
16A

HP0F
53

T24 T23 T22

T26

T9

T10

T7

T21

T6

T27

T15

T14

RSH-31
94V-0
2137

T11

T3

T2

T1

T17

T19

T18

T20

STAINLESS

2

50

10

3

64

16

4

5

FCC ID: VC3-DR100V3

IC ID: 7160A-DR100V3