
Appendix for the Report

**Dosimetric Assessment of the
Portable Device SiTel Semiconductors BV
SC14CVMDECT
(FCC ID: Y82-SC14A)**

**According to the FCC Requirements
SAR Distribution Plots**

March 17, 2011
IMST GmbH
Carl-Friedrich-Gauß-Str. 2
D-47475 Kamp-Lintfort

Customer
SiTel Semiconductors BV
Het Zuiderkruis 53
NL-5215 MV 's-Hertogenbosch
The Netherlands

The test results only relate to the items tested. This report shall not be reproduced except in full without the written approval of the testing laboratory.

Table of Contents

1 SAR DISTRIBUTION PLOTS, ANTENNA 1 3

2 SAR DISTRIBUTION PLOTS, ANTENNA 2..... 11

3 SAR Z-AXIS SCANS (VALIDATION) 19

4 SAR Z-AXIS SCANS (MEASUREMENTS)..... 19

1 SAR Distribution Plots, Antenna 1

Test Laboratory: IMST GmbH, DASY Blue (I); File Name: [Sitel8_yphm_1_0mm.da4](#)

DUT: Sitel Device;

Program Name: DECT

Communication System: DECT US; Frequency: 1924.99 MHz; Duty Cycle: 1:24

Medium parameters used: $f = 1924.99$ MHz; $\sigma = 1.56$ mho/m; $\epsilon_r = 54.6$; $\rho = 1000$ kg/m³

Phantom section: Flat Section

DASY4 Configuration:

- Probe: ET3DV6R - SN1669; ConvF(4.63, 4.63, 4.63); Calibrated: 21.02.2011
- Sensor-Surface: 4mm (Mechanical Surface Detection)
- Electronics: DAE3 Sn335; Calibrated: 22.02.2011
- Phantom: SAM Glycol 1176; Type: Speag; Serial: 1176
- Measurement SW: DASY4, V4.7 Build 80; Postprocessing SW: SEMCAD, V1.8 Build 186

Body Worn/Area Scan (8x15x1): Measurement grid: dx=15mm, dy=15mm

Maximum value of SAR (measured) = 0.020 mW/g

Body Worn/Zoom Scan (7x7x7)/Cube 0: Measurement grid: dx=5mm, dy=5mm, dz=5mm

Reference Value = 1.49 V/m; Power Drift = -0.138 dB

Peak SAR (extrapolated) = 0.044 W/kg

SAR(1 g) = 0.021 mW/

Maximum value of SAR (measured) = 0.024 mW/g

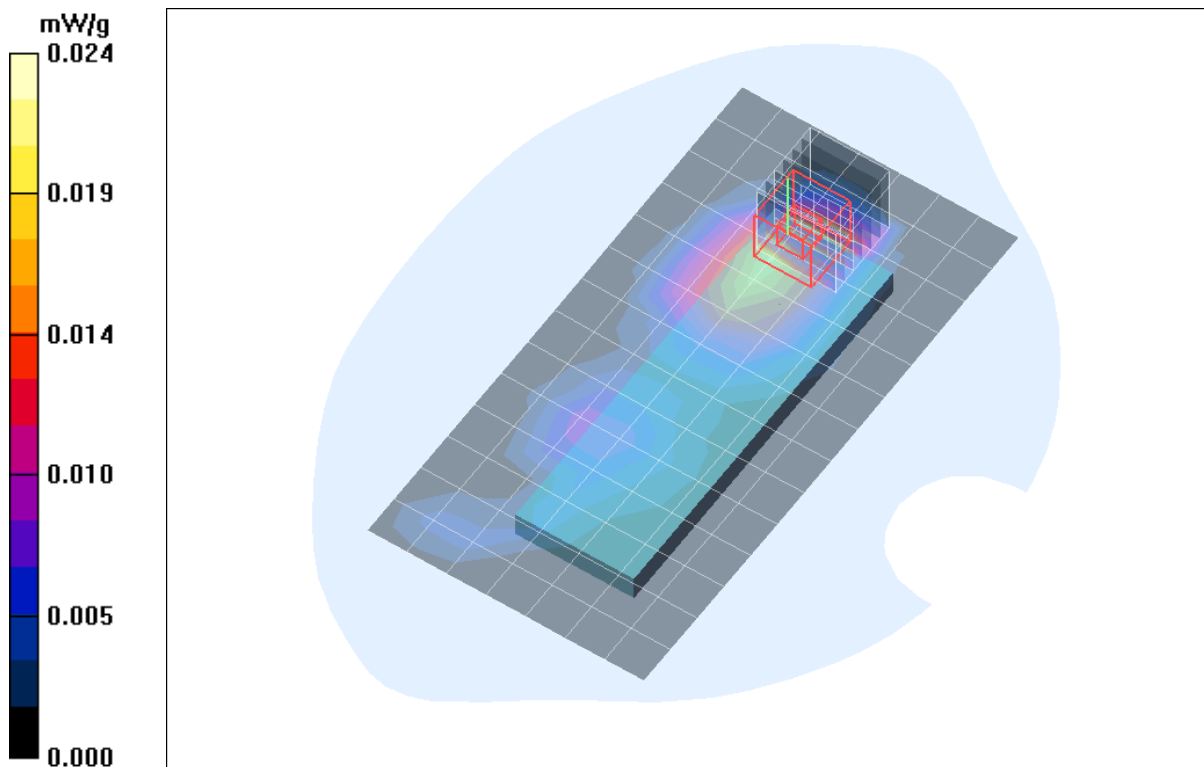


Fig. 1: SAR distribution for DECT US, channel 2, Position 1, 0 mm distance (March 14, 2011; Ambient Temperature: 21.8°C; Liquid Temperature: 21.4°C).

Test Laboratory: IMST GmbH, DASY Blue (I); File Name: [Sitel8_yphm_1_5mm.da4](#)

DUT: Sitel Device;

Program Name: DECT

Communication System: DECT US; Frequency: 1924.99 MHz; Duty Cycle: 1:24

Medium parameters used: $f = 1924.99$ MHz; $\sigma = 1.56$ mho/m; $\epsilon_r = 54.6$; $\rho = 1000$ kg/m³

Phantom section: Flat Section

DASY4 Configuration:

- Probe: ET3DV6R - SN1669; ConvF(4.63, 4.63, 4.63); Calibrated: 21.02.2011
- Sensor-Surface: 4mm (Mechanical Surface Detection)
- Electronics: DAE3 Sn335; Calibrated: 22.02.2011
- Phantom: SAM Glycol 1176; Type: Speag; Serial: 1176
- Measurement SW: DASY4, V4.7 Build 80; Postprocessing SW: SEMCAD, V1.8 Build 186

Body Worn/Area Scan (8x15x1): Measurement grid: dx=15mm, dy=15mm

Maximum value of SAR (measured) = 0.014 mW/g

Body Worn/Zoom Scan (7x7x7)/Cube 0: Measurement grid: dx=5mm, dy=5mm, dz=5mm

Reference Value = 1.24 V/m; Power Drift = -0.190 dB

Peak SAR (extrapolated) = 0.020 W/kg

SAR(1 g) = 0.013 mW/g; SAR(10 g) = 0.00818 mW/g

Body Worn/Zoom Scan (7x7x7)/Cube 1: Measurement grid: dx=5mm, dy=5mm, dz=5mm

Reference Value = 1.24 V/m; Power Drift = -0.190 dB

Peak SAR (extrapolated) = 0.020 W/kg

SAR(1 g) = 0.011 mW/g; SAR(10 g) = 0.00572 mW/g

Maximum value of SAR (measured) = 0.013 mW/g

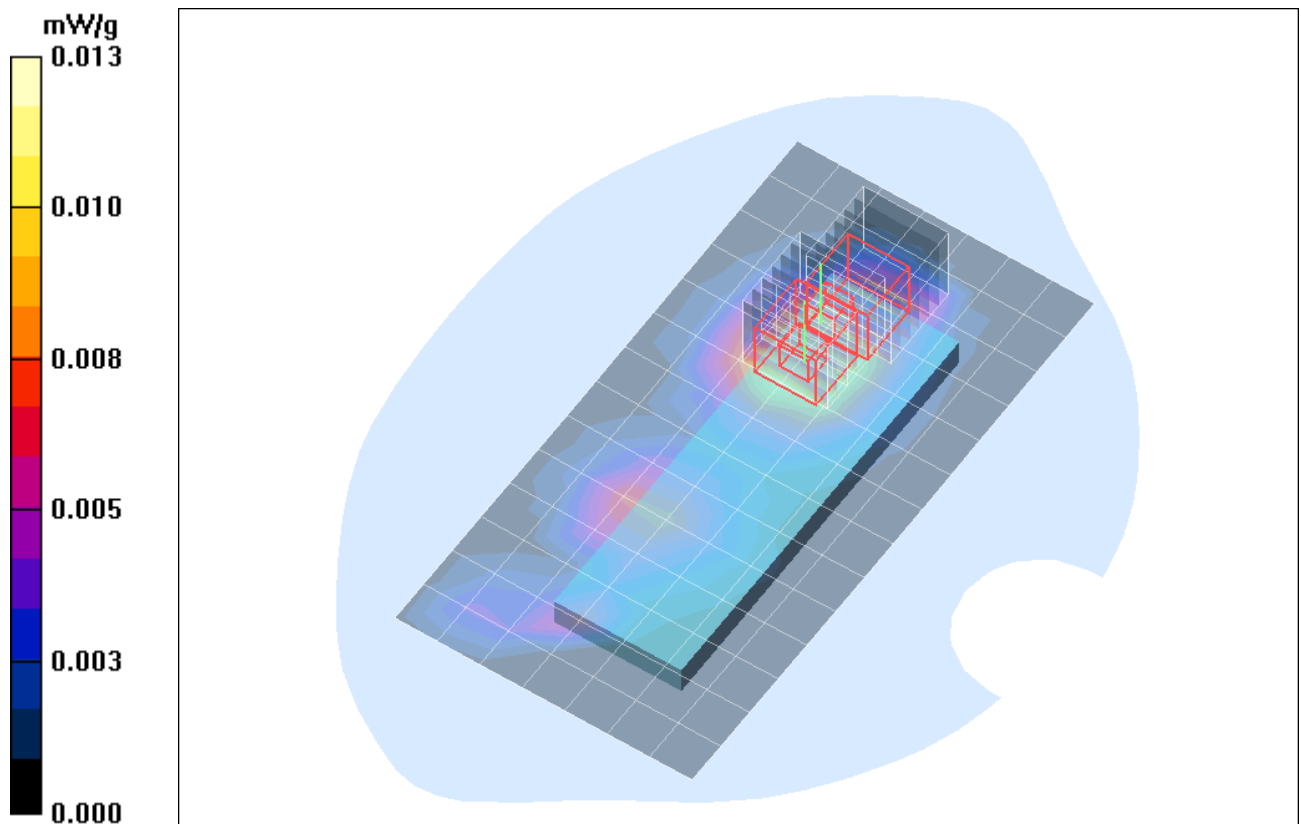


Fig. 2: SAR distribution for DECT US, channel 2, Position 1, 5 mm distance (March 14, 2011; Ambient Temperature: 21.8°C; Liquid Temperature: 21.4°C).

Test Laboratory: IMST GmbH, DASY Blue (I); File Name: [Sitel8_yphm_1_10mm.da4](#)

DUT: Sitel Device;

Program Name: DECT

Communication System: DECT US; Frequency: 1924.99 MHz; Duty Cycle: 1:24

Medium parameters used: $f = 1924.99$ MHz; $\sigma = 1.56$ mho/m; $\epsilon_r = 54.6$; $\rho = 1000$ kg/m³

Phantom section: Flat Section

DASY4 Configuration:

- Probe: ET3DV6R - SN1669; ConvF(4.63, 4.63, 4.63); Calibrated: 21.02.2011
- Sensor-Surface: 4mm (Mechanical Surface Detection)
- Electronics: DAE3 Sn335; Calibrated: 22.02.2011
- Phantom: SAM Glycol 1176; Type: Speag; Serial: 1176
- Measurement SW: DASY4, V4.7 Build 80; Postprocessing SW: SEMCAD, V1.8 Build 186

Body Worn/Area Scan (8x15x1): Measurement grid: dx=15mm, dy=15mm

Maximum value of SAR (measured) = 0.008 mW/g

Body Worn/Zoom Scan (7x7x7)/Cube 0: Measurement grid: dx=5mm, dy=5mm, dz=5mm

Reference Value = 1.33 V/m; Power Drift = -0.118 dB

Peak SAR (extrapolated) = 0.012 W/kg

SAR(1 g) = 0.00774 mW/g; SAR(10 g) = 0.00478 mW/g

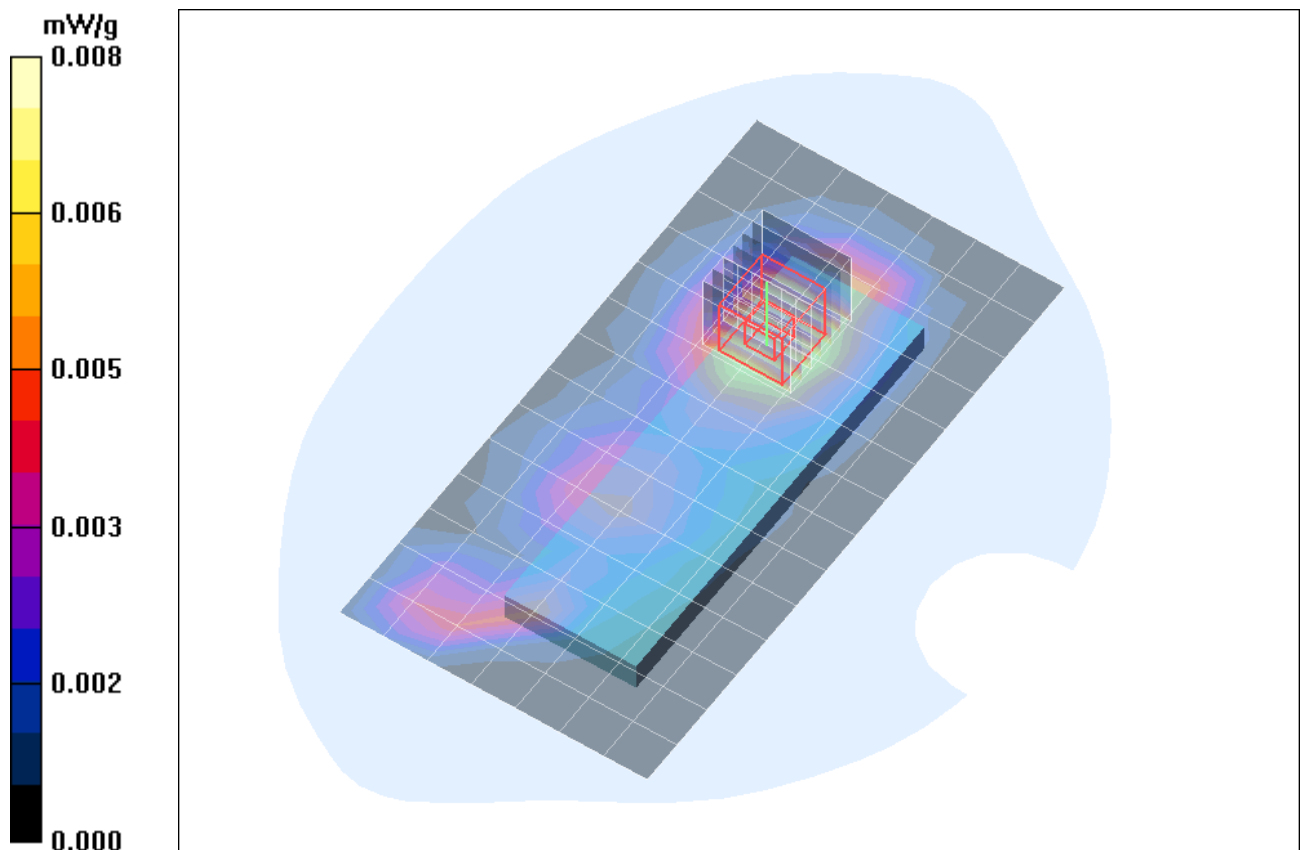


Fig. 3: SAR distribution for DECT US, channel 2, Position 1, 10 mm distance (March 14, 2011; Ambient Temperature: 21.8°C; Liquid Temperature: 21.4°C).

Test Laboratory: IMST GmbH, DASY Blue (I); File Name: [Sitel8_yphm_1_15mm.da4](#)

DUT: Sitel Device;

Program Name: DECT

Communication System: DECT US; Frequency: 1924.99 MHz; Duty Cycle: 1:24

Medium parameters used: $f = 1924.99$ MHz; $\sigma = 1.56$ mho/m; $\epsilon_r = 54.6$; $\rho = 1000$ kg/m³

Phantom section: Flat Section

DASY4 Configuration:

- Probe: ET3DV6R - SN1669; ConvF(4.63, 4.63, 4.63); Calibrated: 21.02.2011
- Sensor-Surface: 4mm (Mechanical Surface Detection)
- Electronics: DAE3 Sn335; Calibrated: 22.02.2011
- Phantom: SAM Glycol 1176; Type: Speag; Serial: 1176
- Measurement SW: DASY4, V4.7 Build 80; Postprocessing SW: SEMCAD, V1.8 Build 186

Body Worn/Area Scan (8x15x1): Measurement grid: dx=15mm, dy=15mm

Maximum value of SAR (measured) = 0.004 mW/g

Body Worn/Zoom Scan (7x7x7)/Cube 0: Measurement grid: dx=5mm, dy=5mm, dz=5mm

Reference Value = 1.18 V/m; Power Drift = -0.001 dB

Peak SAR (extrapolated) = 0.006 W/kg

SAR(1 g) = 0.00343 mW/g; SAR(10 g) = 0.00215 mW/g

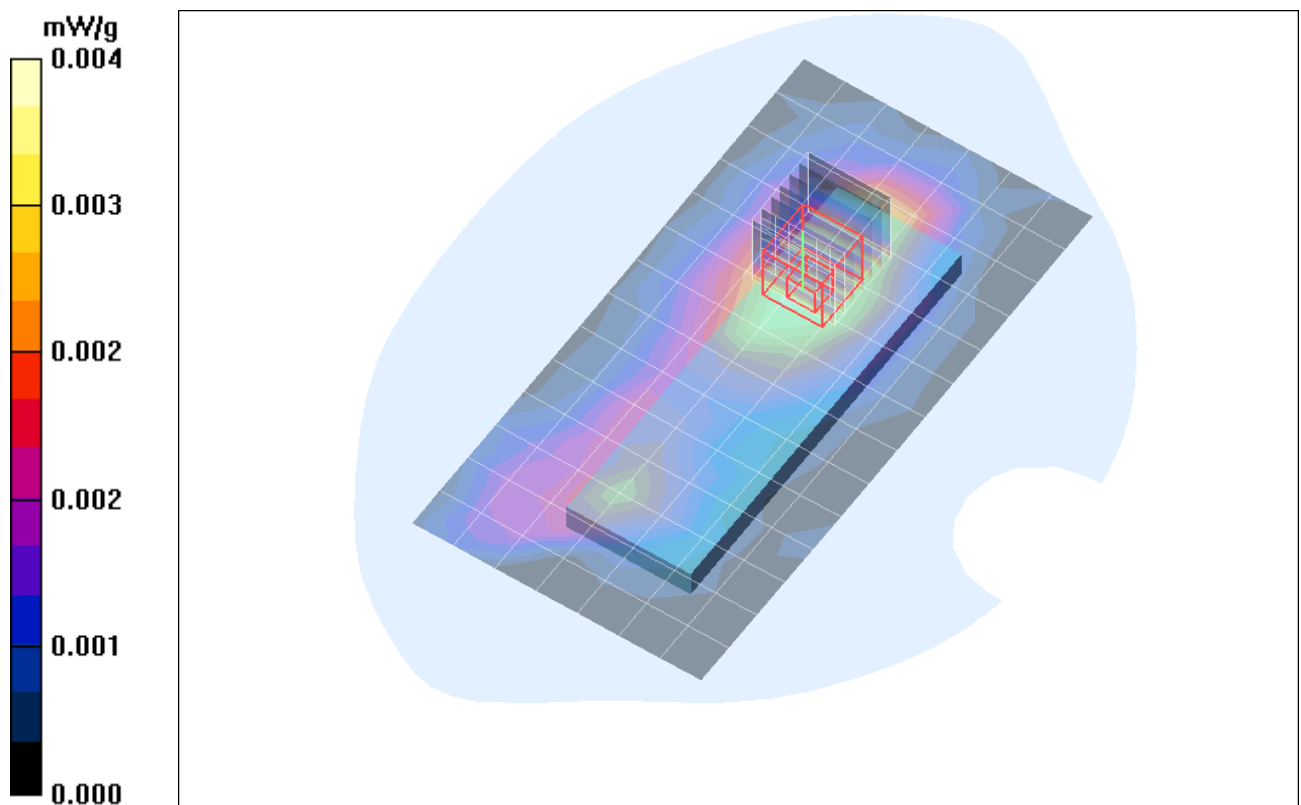


Fig. 4: SAR distribution for DECT US, channel 2, Position 1, 15 mm distance (March 14, 2011; Ambient Temperature: 21.8°C; Liquid Temperature: 21.4°C)

Test Laboratory: IMST GmbH, DASY Blue (I); File Name: [Sitel8_yphm_2_0mm.da4](#)

DUT: Sitel Device;

Program Name: DECT

Communication System: DECT US; Frequency: 1924.99 MHz; Duty Cycle: 1:24

Medium parameters used: $f = 1924.99$ MHz; $\sigma = 1.56$ mho/m; $\epsilon_r = 54.6$; $\rho = 1000$ kg/m³

Phantom section: Flat Section

DASY4 Configuration:

- Probe: ET3DV6R - SN1669; ConvF(4.63, 4.63, 4.63); Calibrated: 21.02.2011
- Sensor-Surface: 4mm (Mechanical Surface Detection)
- Electronics: DAE3 Sn335; Calibrated: 22.02.2011
- Phantom: SAM Glycol 1176; Type: Speag; Serial: 1176
- Measurement SW: DASY4, V4.7 Build 80; Postprocessing SW: SEMCAD, V1.8 Build 186

Body Worn/Area Scan (8x15x1): Measurement grid: dx=15mm, dy=15mm

Maximum value of SAR (measured) = 0.063 mW/g

Body Worn/Zoom Scan (7x7x7)/Cube 0: Measurement grid: dx=5mm, dy=5mm, dz=5mm

Reference Value = 1.26 V/m; Power Drift = -0.109 dB

Peak SAR (extrapolated) = 0.201 W/kg

SAR(1 g) = 0.071 mW/g; SAR(10 g) = 0.031 mW/g

Maximum value of SAR (measured) = 0.083 mW/g

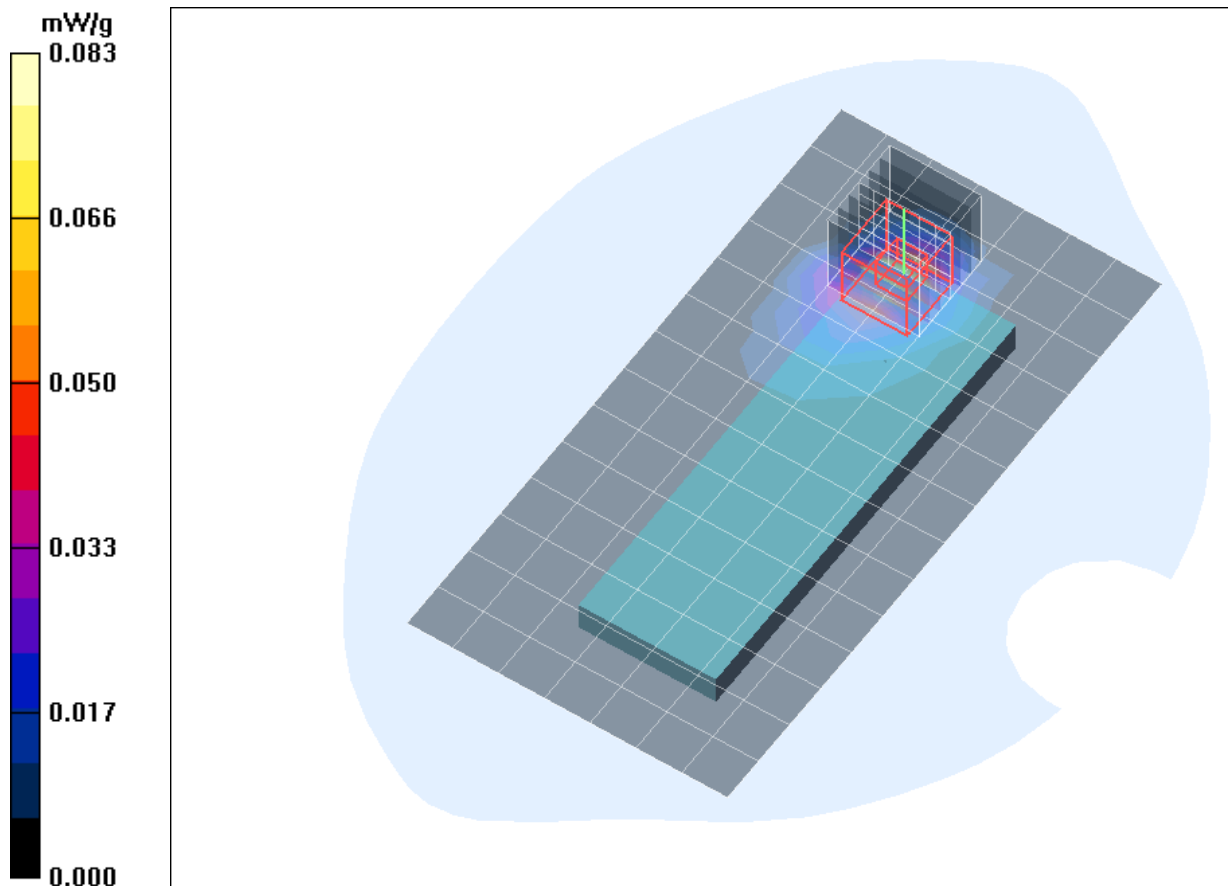


Fig. 5: SAR distribution for DECT US, channel 2, Position 2, 0 mm distance (March 14, 2011; Ambient Temperature: 21.8°C; Liquid Temperature: 21.4°C).

Test Laboratory: IMST GmbH, DASY Blue (I); File Name: [Sitel8_yphm_2_5mm.da4](#)

DUT: Sitel Device;

Program Name: DECT

Communication System: DECT US; Frequency: 1924.99 MHz; Duty Cycle: 1:24

Medium parameters used: $f = 1924.99$ MHz; $\sigma = 1.56$ mho/m; $\epsilon_r = 54.6$; $\rho = 1000$ kg/m³

Phantom section: Flat Section

DASY4 Configuration:

- Probe: ET3DV6R - SN1669; ConvF(4.63, 4.63, 4.63); Calibrated: 21.02.2011
- Sensor-Surface: 4mm (Mechanical Surface Detection)
- Electronics: DAE3 Sn335; Calibrated: 22.02.2011
- Phantom: SAM Glycol 1176; Type: Speag; Serial: 1176
- Measurement SW: DASY4, V4.7 Build 80; Postprocessing SW: SEMCAD, V1.8 Build 186

Body Worn/Area Scan (8x15x1): Measurement grid: dx=15mm, dy=15mm

Maximum value of SAR (measured) = 0.028 mW/g

Body Worn/Zoom Scan (7x7x7)/Cube 0: Measurement grid: dx=5mm, dy=5mm, dz=5mm

Reference Value = 1.85 V/m; Power Drift = 0.118 dB

Peak SAR (extrapolated) = 0.070 W/kg

SAR(1 g) = 0.031 mW/g; SAR(10 g) = 0.015 mW/g

Maximum value of SAR (measured) = 0.035 mW/g

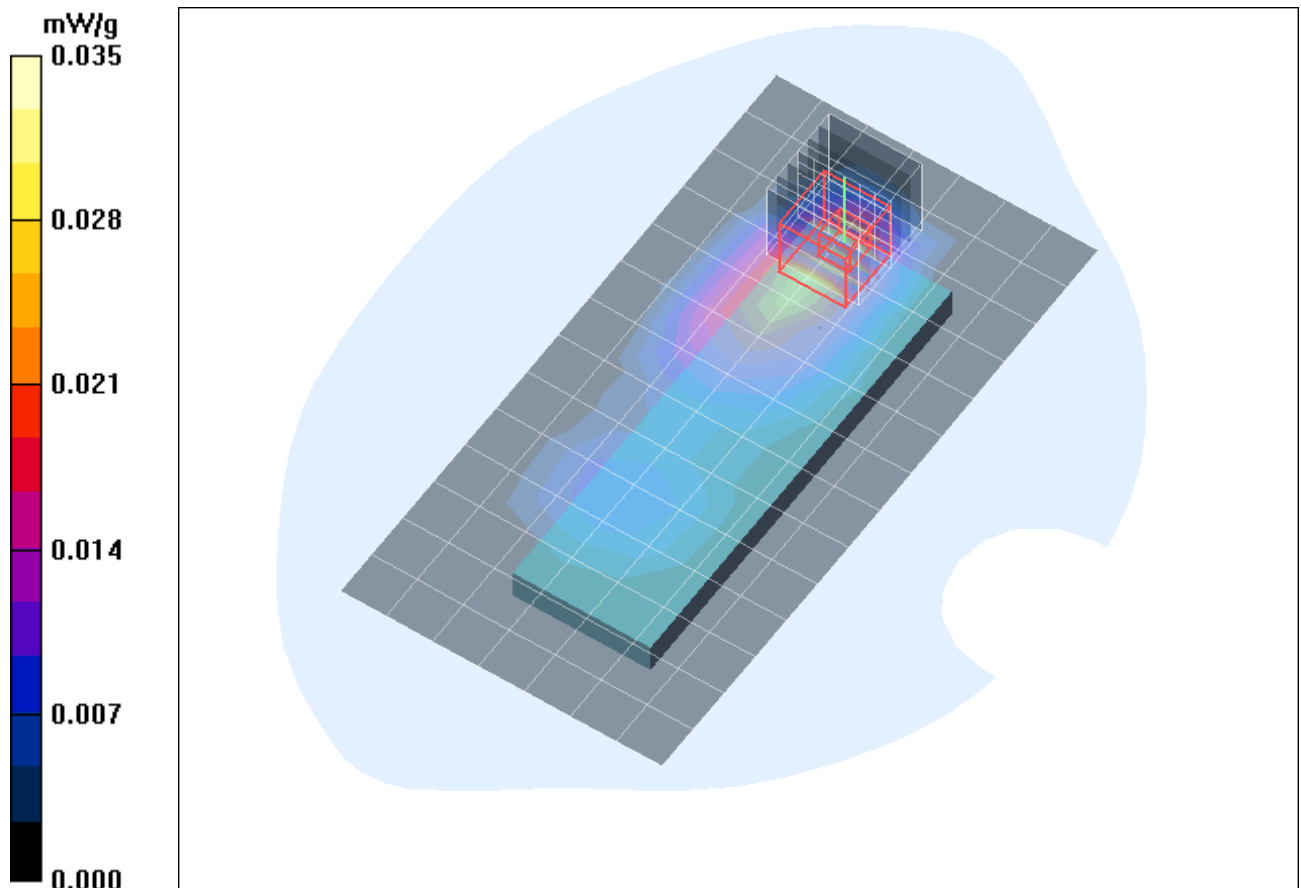


Fig. 6: SAR distribution for DECT US, channel 2, Position 2, 5 mm distance (March 14, 2011; Ambient Temperature: 21.8°C; Liquid Temperature: 21.4°C).

Test Laboratory: IMST GmbH, DASY Blue (I); File Name: [Sitel8_yphm_2_10mm.da4](#)

DUT: Sitel Device;

Program Name: DECT

Communication System: DECT US; Frequency: 1924.99 MHz; Duty Cycle: 1:24

Medium parameters used: $f = 1924.99$ MHz; $\sigma = 1.56$ mho/m; $\epsilon_r = 54.6$; $\rho = 1000$ kg/m³

Phantom section: Flat Section

DASY4 Configuration:

- Probe: ET3DV6R - SN1669; ConvF(4.63, 4.63, 4.63); Calibrated: 21.02.2011
- Sensor-Surface: 4mm (Mechanical Surface Detection)
- Electronics: DAE3 Sn335; Calibrated: 22.02.2011
- Phantom: SAM Glycol 1176; Type: Speag; Serial: 1176
- Measurement SW: DASY4, V4.7 Build 80; Postprocessing SW: SEMCAD, V1.8 Build 186

Body Worn/Area Scan (8x15x1): Measurement grid: dx=15mm, dy=15mm

Maximum value of SAR (measured) = 0.019 mW/g

Body Worn/Zoom Scan (7x7x7)/Cube 0: Measurement grid: dx=5mm, dy=5mm, dz=5mm

Reference Value = 1.50 V/m; Power Drift = -0.147 dB

Peak SAR (extrapolated) = 0.027 W/kg

SAR(1 g) = 0.018 mW/g; SAR(10 g) = 0.011 mW/g

Maximum value of SAR (measured) = 0.020 mW/g

Body Worn/Zoom Scan (7x7x7)/Cube 1: Measurement grid: dx=5mm, dy=5mm, dz=5mm

Reference Value = 1.50 V/m; Power Drift = -0.147 dB

Peak SAR (extrapolated) = 0.027 W/kg

SAR(1 g) = 0.014 mW/g; SAR(10 g) = 0.00728 mW/g

Maximum value of SAR (measured) = 0.016 mW/g

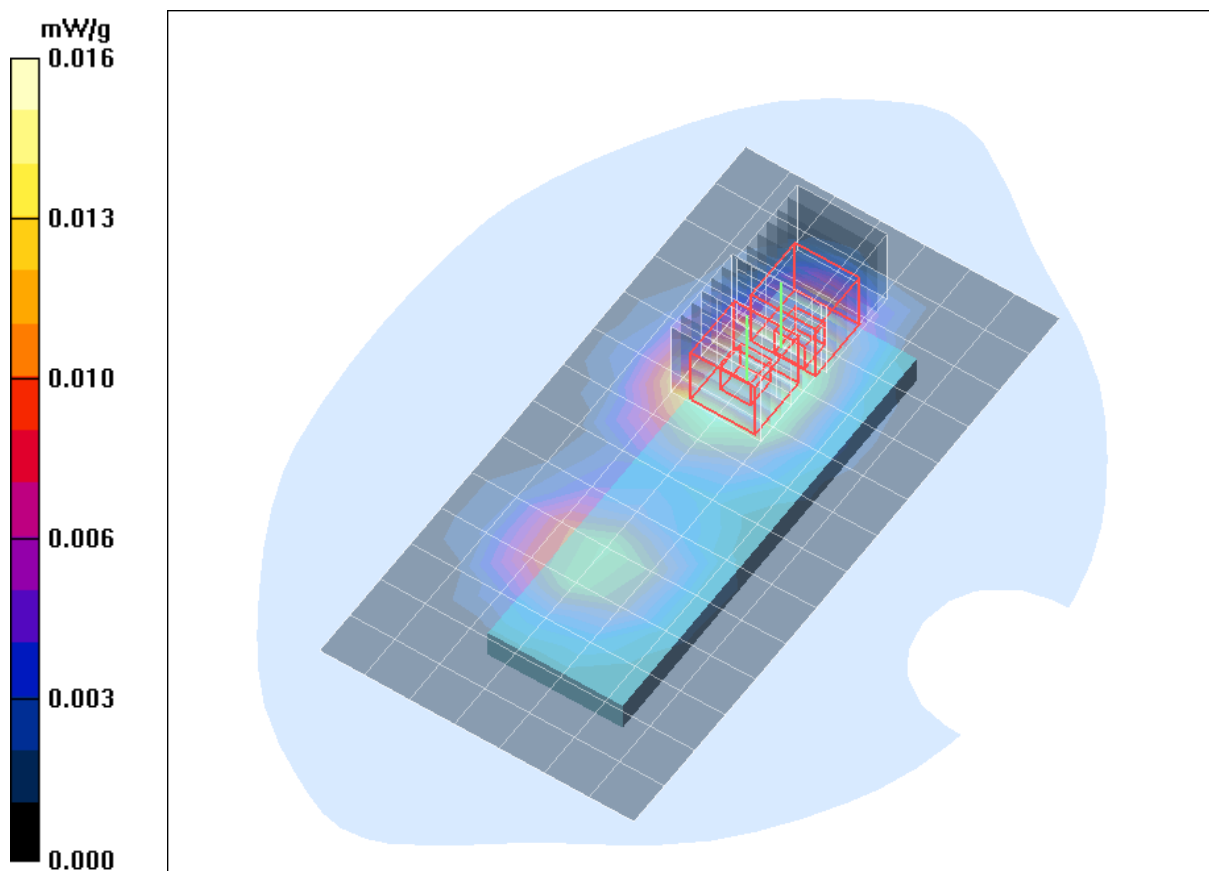


Fig. 7: SAR distribution for DECT US, channel 2, Position 2, 10 mm distance (March 14, 2011; Ambient Temperature: 21.8°C; Liquid Temperature: 21.4°C).

Test Laboratory: IMST GmbH, DASY Blue (I); File Name: [Sitel8_yphm_2_15mm.da4](#)

DUT: Sitel Device;

Program Name: DECT

Communication System: DECT US; Frequency: 1924.99 MHz; Duty Cycle: 1:24

Medium parameters used: $f = 1924.99$ MHz; $\sigma = 1.56$ mho/m; $\epsilon_r = 54.6$; $\rho = 1000$ kg/m³

Phantom section: Flat Section

DASY4 Configuration:

- Probe: ET3DV6R - SN1669; ConvF(4.63, 4.63, 4.63); Calibrated: 21.02.2011
- Sensor-Surface: 4mm (Mechanical Surface Detection)
- Electronics: DAE3 Sn335; Calibrated: 22.02.2011
- Phantom: SAM Glycol 1176; Type: Speag; Serial: 1176
- Measurement SW: DASY4, V4.7 Build 80; Postprocessing SW: SEMCAD, V1.8 Build 186

Body Worn/Area Scan (8x15x1): Measurement grid: dx=15mm, dy=15mm

Maximum value of SAR (measured) = 0.012 mW/g

Body Worn/Zoom Scan (7x7x7)/Cube 0: Measurement grid: dx=5mm, dy=5mm, dz=5mm

Reference Value = 0.966 V/m; Power Drift = 0.140 dB

Peak SAR (extrapolated) = 0.018 W/kg

SAR(1 g) = 0.012 mW/g; SAR(10 g) = 0.00716 mW/g

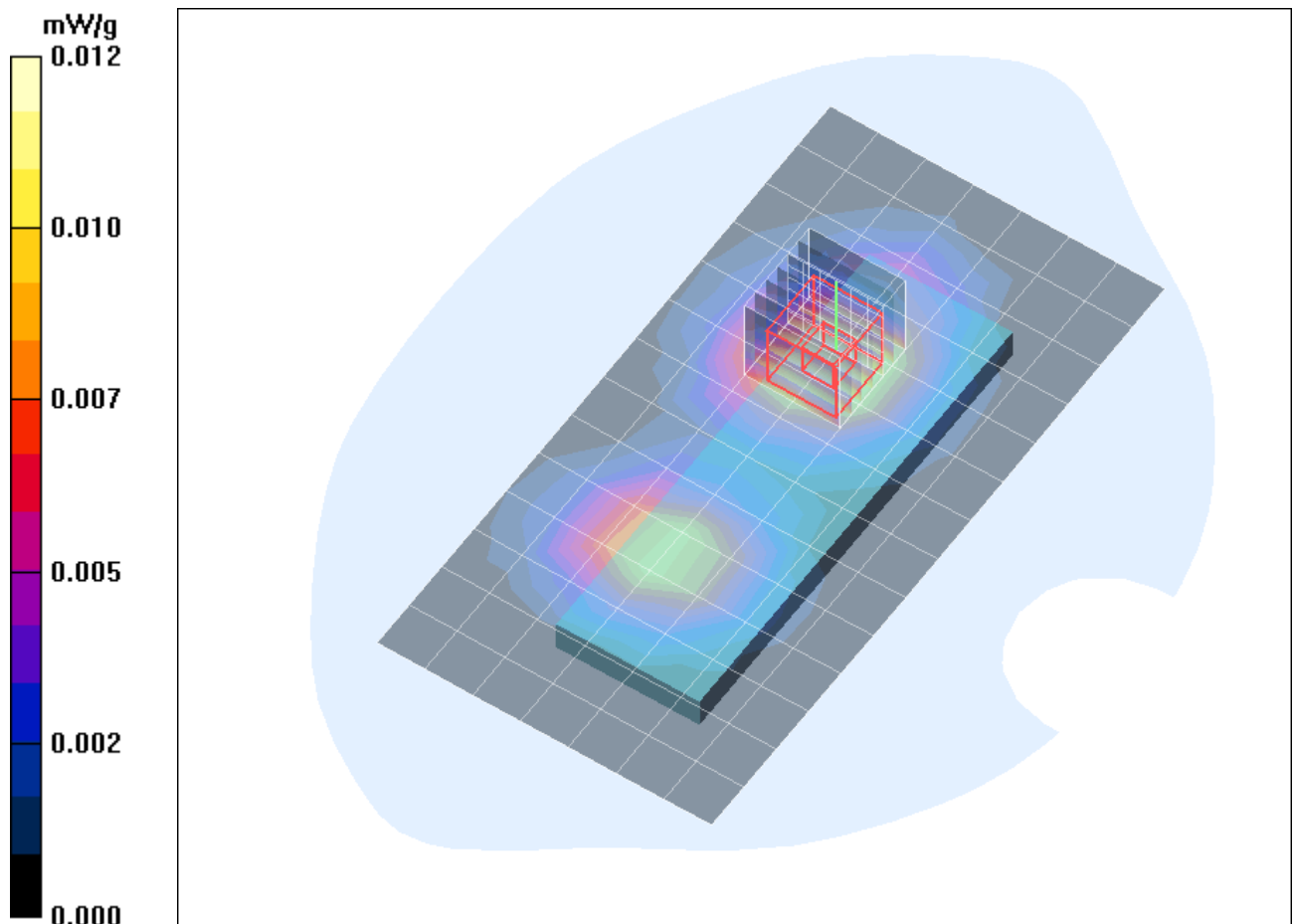


Fig. 8: SAR distribution for DECT US, channel 2, Position 2, 15 mm distance (March 14, 2011; Ambient Temperature: 21.8°C; Liquid Temperature: 21.4°C)

2 SAR Distribution Plots, Antenna 2

Test Laboratory: IMST GmbH, DASY Blue (I); File Name: [SiteI9_yphm_3_0mm.da4](#)

DUT: Sitel Device;

Program Name: DECT

Communication System: DECT US; Frequency: 1924.99 MHz; Duty Cycle: 1:24

Medium parameters used: $f = 1924.99$ MHz; $\sigma = 1.56$ mho/m; $\epsilon_r = 54.6$; $\rho = 1000$ kg/m³

Phantom section: Flat Section

DASY4 Configuration:

- Probe: ET3DV6R - SN1669; ConvF(4.63, 4.63, 4.63); Calibrated: 21.02.2011
- Sensor-Surface: 4mm (Mechanical Surface Detection)
- Electronics: DAE3 Sn335; Calibrated: 22.02.2011
- Phantom: SAM Glycol 1176; Type: Speag; Serial: 1176
- Measurement SW: DASY4, V4.7 Build 80; Postprocessing SW: SEMCAD, V1.8 Build 186

Body Worn/Area Scan (8x15x1): Measurement grid: dx=15mm, dy=15mm

Maximum value of SAR (measured) = 0.033 mW/g

Body Worn/Zoom Scan (7x7x7)/Cube 0: Measurement grid: dx=5mm, dy=5mm, dz=5mm

Reference Value = 1.66 V/m; Power Drift = -0.104 dB

Peak SAR (extrapolated) = 0.064 W/kg

SAR(1 g) = 0.029 mW/g; SAR(10 g) = 0.014 mW/g

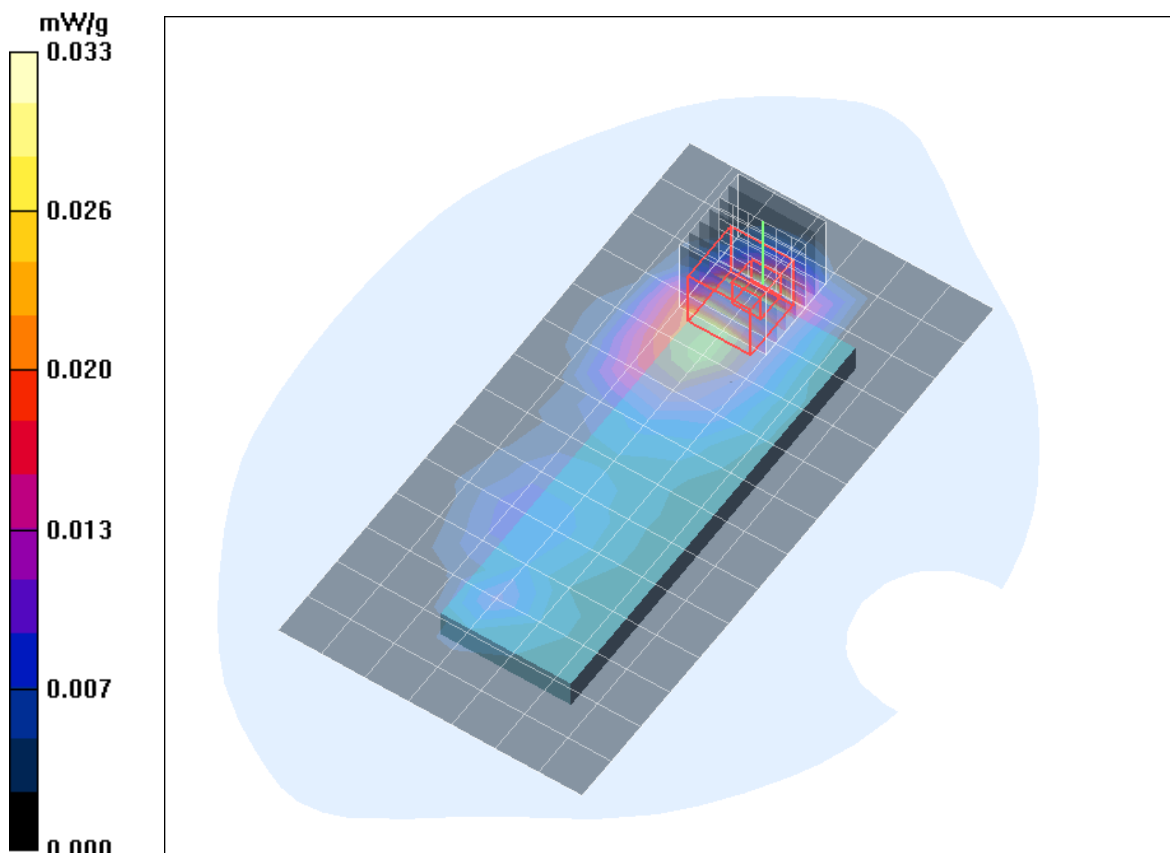


Fig. 9: SAR distribution for DECT US, channel 2, Position 1, 0 mm distance (March 14, 2011; Ambient Temperature: 21.8°C; Liquid Temperature: 21.4°C).

Test Laboratory: IMST GmbH, DASY Blue (I); File Name: [Sitel9_yphm_3_5mm.da4](#)

DUT: Sitel Device;

Program Name: DECT

Communication System: DECT US; Frequency: 1924.99 MHz; Duty Cycle: 1:24

Medium parameters used: $f = 1924.99$ MHz; $\sigma = 1.56$ mho/m; $\epsilon_r = 54.6$; $\rho = 1000$ kg/m³

Phantom section: Flat Section

DASY4 Configuration:

- Probe: ET3DV6R - SN1669; ConvF(4.63, 4.63, 4.63); Calibrated: 21.02.2011
- Sensor-Surface: 4mm (Mechanical Surface Detection)
- Electronics: DAE3 Sn335; Calibrated: 22.02.2011
- Phantom: SAM Glycol 1176; Type: Speag; Serial: 1176
- Measurement SW: DASY4, V4.7 Build 80; Postprocessing SW: SEMCAD, V1.8 Build 186

Body Worn/Area Scan (8x15x1): Measurement grid: dx=15mm, dy=15mm

Maximum value of SAR (measured) = 0.015 mW/g

Body Worn/Zoom Scan (7x7x7)/Cube 0: Measurement grid: dx=5mm, dy=5mm, dz=5mm

Reference Value = 1.52 V/m; Power Drift = 0.147 dB

Peak SAR (extrapolated) = 0.023 W/kg

SAR(1 g) = 0.015 mW/g; SAR(10 g) = 0.00905 mW/g

Maximum value of SAR (measured) = 0.016 mW/g

Body Worn/Zoom Scan (7x7x7)/Cube 1: Measurement grid: dx=5mm, dy=5mm, dz=5mm

Reference Value = 1.52 V/m; Power Drift = 0.147 dB

Peak SAR (extrapolated) = 0.042 W/kg

SAR(1 g) = 0.014 mW/g; SAR(10 g) = 0.00601 mW/g

Maximum value of SAR (measured) = 0.019 mW/g

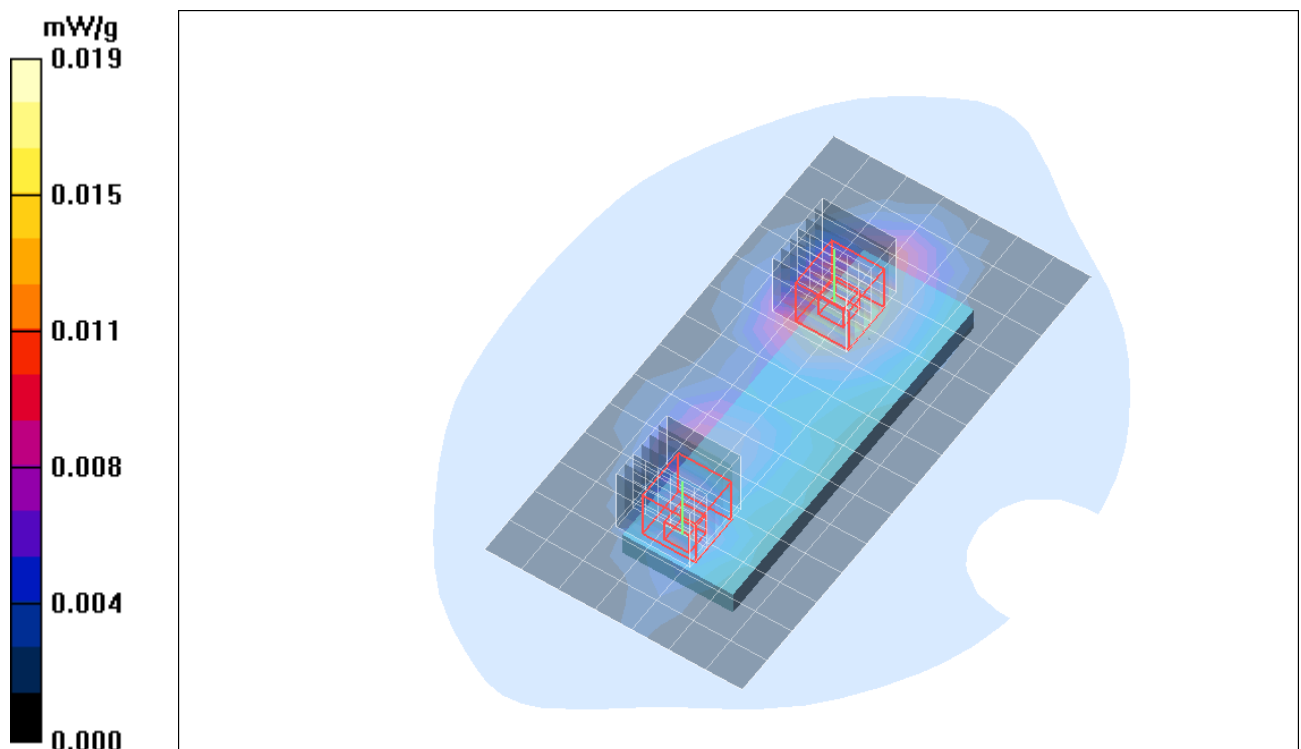


Fig. 10: SAR distribution for DECT US, channel 2, Position 1, 5 mm distance (March 14, 2011; Ambient Temperature: 21.8°C; Liquid Temperature: 21.4°C).

Test Laboratory: IMST GmbH, DASY Blue (I); File Name: [Sitel9_yphm_3_10mm.da4](#)

DUT: Sitel Device;

Program Name: DECT

Communication System: DECT US; Frequency: 1924.99 MHz; Duty Cycle: 1:24

Medium parameters used: $f = 1924.99$ MHz; $\sigma = 1.56$ mho/m; $\epsilon_r = 54.6$; $\rho = 1000$ kg/m³

Phantom section: Flat Section

DASY4 Configuration:

- Probe: ET3DV6R - SN1669; ConvF(4.63, 4.63, 4.63); Calibrated: 21.02.2011
- Sensor-Surface: 4mm (Mechanical Surface Detection)
- Electronics: DAE3 Sn335; Calibrated: 22.02.2011
- Phantom: SAM Glycol 1176; Type: Speag; Serial: 1176
- Measurement SW: DASY4, V4.7 Build 80; Postprocessing SW: SEMCAD, V1.8 Build 186

Body Worn/Area Scan (8x15x1): Measurement grid: dx=15mm, dy=15mm

Maximum value of SAR (measured) = 0.008 mW/g

Body Worn/Zoom Scan (7x7x7)/Cube 0: Measurement grid: dx=5mm, dy=5mm, dz=5mm

Reference Value = 1.31 V/m; Power Drift = 0.144 dB

Peak SAR (extrapolated) = 0.013 W/kg

SAR(1 g) = 0.00827 mW/g; SAR(10 g) = 0.00506 mW/g

Maximum value of SAR (measured) = 0.009 mW/g

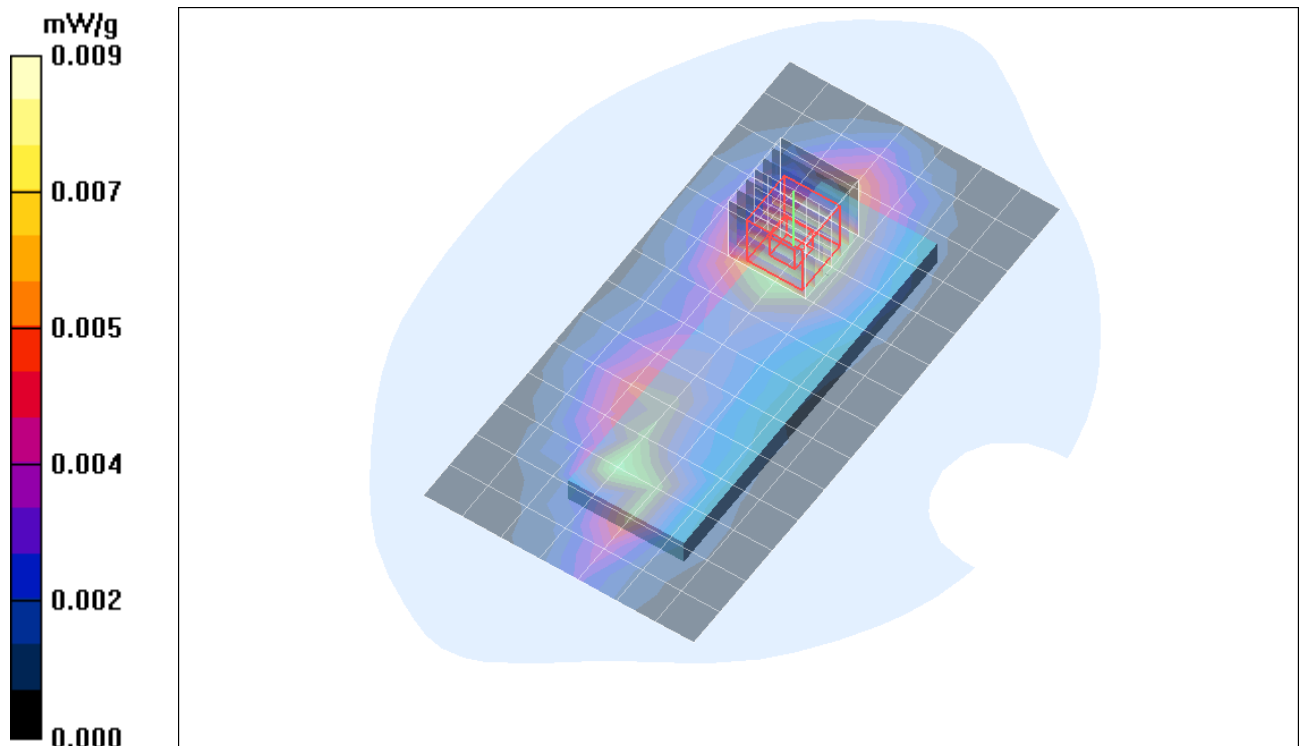


Fig. 11: SAR distribution for DECT US, channel 2, Position 1, 10 mm distance (March 14, 2011; Ambient Temperature: 21.8°C; Liquid Temperature: 21.4°C).

Test Laboratory: IMST GmbH, DASY Blue (I); File Name: [Sitel9_yphm_3_15mm.da4](#)

DUT: Sitel Device;

Program Name: DECT

Communication System: DECT US; Frequency: 1924.99 MHz; Duty Cycle: 1:24

Medium parameters used: $f = 1924.99$ MHz; $\sigma = 1.56$ mho/m; $\epsilon_r = 54.6$; $\rho = 1000$ kg/m³

Phantom section: Flat Section

DASY4 Configuration:

- Probe: ET3DV6R - SN1669; ConvF(4.63, 4.63, 4.63); Calibrated: 21.02.2011
- Sensor-Surface: 4mm (Mechanical Surface Detection)
- Electronics: DAE3 Sn335; Calibrated: 22.02.2011
- Phantom: SAM Glycol 1176; Type: Speag; Serial: 1176
- Measurement SW: DASY4, V4.7 Build 80; Postprocessing SW: SEMCAD, V1.8 Build 186

Body Worn/Area Scan (8x15x1): Measurement grid: dx=15mm, dy=15mm

Maximum value of SAR (measured) = 0.005 mW/g

Body Worn/Zoom Scan (7x7x7)/Cube 0: Measurement grid: dx=5mm, dy=5mm, dz=5mm

Reference Value = 1.12 V/m; Power Drift = -0.164 dB

Peak SAR (extrapolated) = 0.009 W/kg

SAR(1 g) = 0.00525 mW/g; SAR(10 g) = 0.00314 mW/g

Maximum value of SAR (measured) = 0.007 mW/g

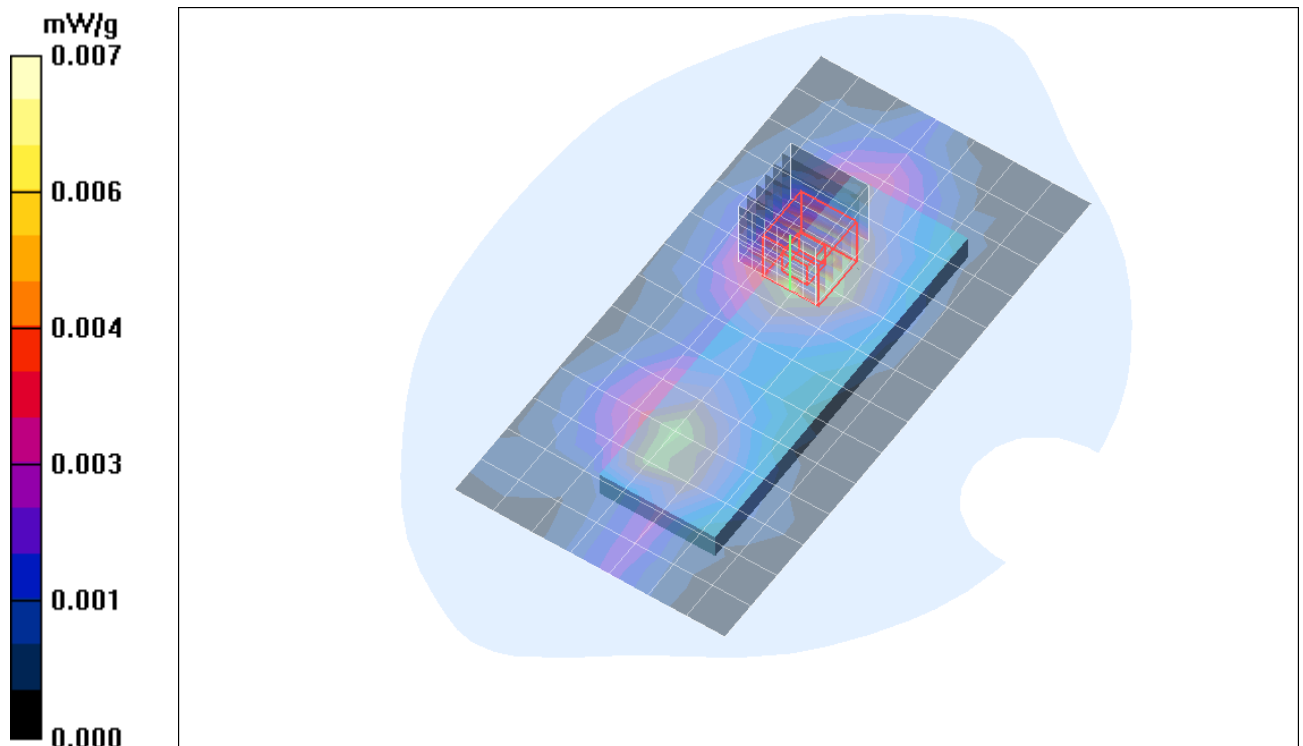


Fig. 12: SAR distribution for DECT US, channel 2, Position 1, 15 mm distance (March 14, 2011; Ambient Temperature: 21.8°C; Liquid Temperature: 21.4°C)

Test Laboratory: IMST GmbH, DASY Blue (I); File Name: [Sitel9_yphm_4_0mm.da4](#)

DUT: Sitel Device;

Program Name: DECT

Communication System: DECT US; Frequency: 1924.99 MHz; Duty Cycle: 1:24

Medium parameters used: $f = 1924.99$ MHz; $\sigma = 1.56$ mho/m; $\epsilon_r = 54.6$; $\rho = 1000$ kg/m³

Phantom section: Flat Section

DASY4 Configuration:

- Probe: ET3DV6R - SN1669; ConvF(4.63, 4.63, 4.63); Calibrated: 21.02.2011
- Sensor-Surface: 4mm (Mechanical Surface Detection)
- Electronics: DAE3 Sn335; Calibrated: 22.02.2011
- Phantom: SAM Glycol 1176; Type: Speag; Serial: 1176
- Measurement SW: DASY4, V4.7 Build 80; Postprocessing SW: SEMCAD, V1.8 Build 186

Body Worn/Area Scan (8x15x1): Measurement grid: dx=15mm, dy=15mm

Maximum value of SAR (measured) = 0.076 mW/g

Body Worn/Zoom Scan (7x7x7)/Cube 0: Measurement grid: dx=5mm, dy=5mm, dz=5mm

Reference Value = 1.86 V/m; Power Drift = -0.012 dB

Peak SAR (extrapolated) = 0.183 W/kg

SAR(1 g) = 0.077 mW/g; SAR(10 g) = 0.037 mW/g

Maximum value of SAR (measured) = 0.091 mW/g

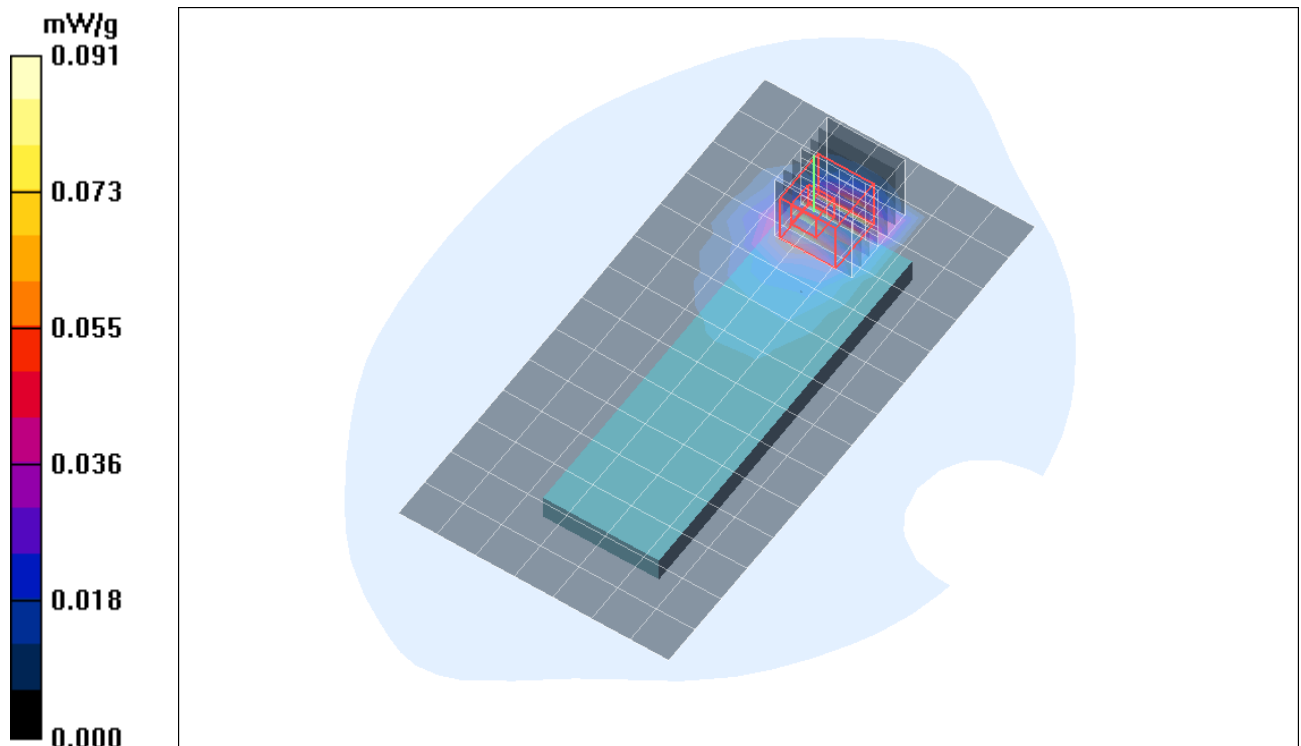


Fig. 13: SAR distribution for DECT US, channel 2, Position 2, 0 mm distance (March 14, 2011; Ambient Temperature: 21.8°C; Liquid Temperature: 21.4°C).

Test Laboratory: IMST GmbH, DASY Blue (I); File Name: [Sitel9_yphm_4_5mm.da4](#)

DUT: Sitel Device;

Program Name: DECT

Communication System: DECT US; Frequency: 1924.99 MHz; Duty Cycle: 1:24

Medium parameters used: $f = 1924.99$ MHz; $\sigma = 1.56$ mho/m; $\epsilon_r = 54.6$; $\rho = 1000$ kg/m³

Phantom section: Flat Section

DASY4 Configuration:

- Probe: ET3DV6R - SN1669; ConvF(4.63, 4.63, 4.63); Calibrated: 21.02.2011
- Sensor-Surface: 4mm (Mechanical Surface Detection)
- Electronics: DAE3 Sn335; Calibrated: 22.02.2011
- Phantom: SAM Glycol 1176; Type: Speag; Serial: 1176
- Measurement SW: DASY4, V4.7 Build 80; Postprocessing SW: SEMCAD, V1.8 Build 186

Body Worn/Area Scan (8x15x1): Measurement grid: dx=15mm, dy=15mm

Maximum value of SAR (measured) = 0.033 mW/g

Body Worn/Zoom Scan (7x7x7)/Cube 0: Measurement grid: dx=5mm, dy=5mm, dz=5mm

Reference Value = 2.17 V/m; Power Drift = 0.012 dB

Peak SAR (extrapolated) = 0.071 W/kg

SAR(1 g) = 0.034 mW/g; SAR(10 g) = 0.018 mW/g

Maximum value of SAR (measured) = 0.039 mW/g

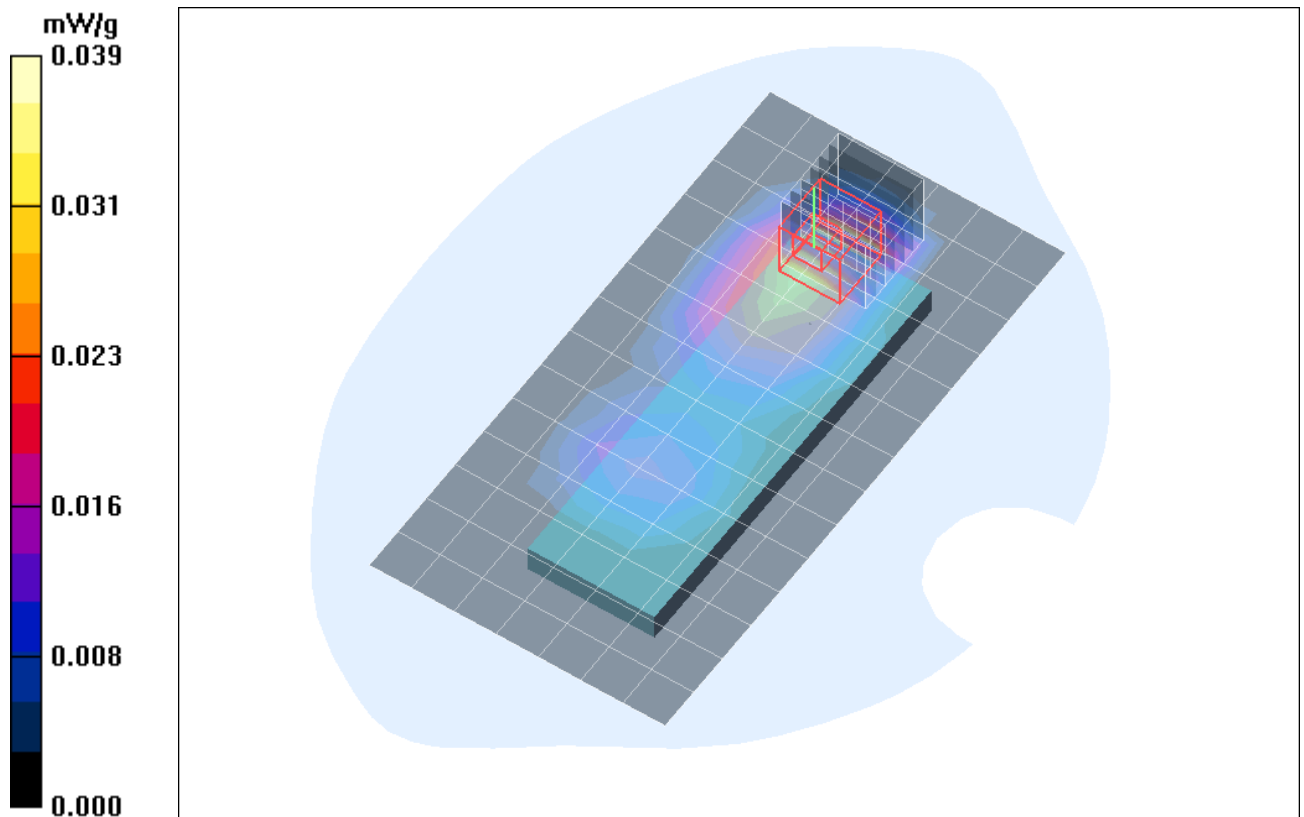


Fig. 14: SAR distribution for DECT US, channel 2, Position 2, 5 mm distance (March 14, 2011; Ambient Temperature: 21.8°C; Liquid Temperature: 21.4°C).

Test Laboratory: IMST GmbH, DASY Blue (I); File Name: [Sitel9_yphm_4_10mm.da4](#)

DUT: Sitel Device;

Program Name: DECT

Communication System: DECT US; Frequency: 1924.99 MHz; Duty Cycle: 1:24

Medium parameters used: $f = 1924.99$ MHz; $\sigma = 1.56$ mho/m; $\epsilon_r = 54.6$; $\rho = 1000$ kg/m³

Phantom section: Flat Section

DASY4 Configuration:

- Probe: ET3DV6R - SN1669; ConvF(4.63, 4.63, 4.63); Calibrated: 21.02.2011
- Sensor-Surface: 4mm (Mechanical Surface Detection)
- Electronics: DAE3 Sn335; Calibrated: 22.02.2011
- Phantom: SAM Glycol 1176; Type: Speag; Serial: 1176
- Measurement SW: DASY4, V4.7 Build 80; Postprocessing SW: SEMCAD, V1.8 Build 186

Body Worn/Area Scan (8x15x1): Measurement grid: dx=15mm, dy=15mm

Maximum value of SAR (measured) = 0.024 mW/g

Body Worn/Zoom Scan (7x7x7)/Cube 0: Measurement grid: dx=5mm, dy=5mm, dz=5mm

Reference Value = 1.81 V/m; Power Drift = -0.131 dB

Peak SAR (extrapolated) = 0.033 W/kg

SAR(1 g) = 0.022 mW/g; SAR(10 g) = 0.014 mW/g

Body Worn/Zoom Scan (7x7x7)/Cube 1: Measurement grid: dx=5mm, dy=5mm, dz=5mm

Reference Value = 1.81 V/m; Power Drift = -0.131 dB

Peak SAR (extrapolated) = 0.034 W/kg

SAR(1 g) = 0.019 mW/g; SAR(10 g) = 0.00924 mW/g

Maximum value of SAR (measured) = 0.022 mW/g

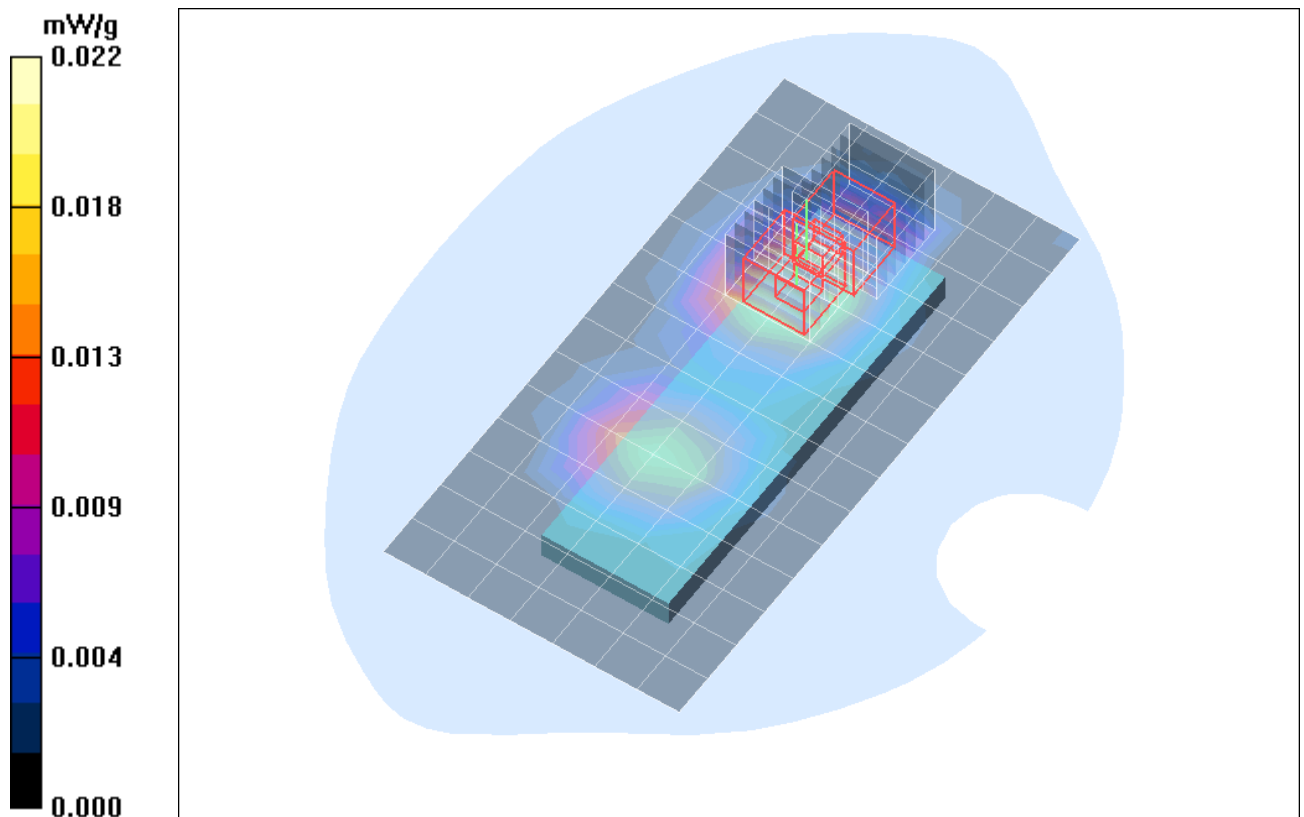


Fig. 15: SAR distribution for DECT US, channel 2, Position 2, 10 mm distance (March 14, 2011; Ambient Temperature: 21.8°C; Liquid Temperature: 21.4°C).

Test Laboratory: IMST GmbH, DASY Blue (I); File Name: [Sitel9_yphm_4_15mm.da4](#)

DUT: Sitel Device;

Program Name: DECT

Communication System: DECT US; Frequency: 1924.99 MHz; Duty Cycle: 1:24

Medium parameters used: $f = 1924.99$ MHz; $\sigma = 1.56$ mho/m; $\epsilon_r = 54.6$; $\rho = 1000$ kg/m³

Phantom section: Flat Section

DASY4 Configuration:

- Probe: ET3DV6R - SN1669; ConvF(4.63, 4.63, 4.63); Calibrated: 21.02.2011
- Sensor-Surface: 4mm (Mechanical Surface Detection)
- Electronics: DAE3 Sn335; Calibrated: 22.02.2011
- Phantom: SAM Glycol 1176; Type: Speag; Serial: 1176
- Measurement SW: DASY4, V4.7 Build 80; Postprocessing SW: SEMCAD, V1.8 Build 186

Body Worn/Area Scan (8x15x1): Measurement grid: dx=15mm, dy=15mm

Maximum value of SAR (measured) = 0.018 mW/g

Body Worn/Zoom Scan (7x7x7)/Cube 0: Measurement grid: dx=5mm, dy=5mm, dz=5mm

Reference Value = 1.44 V/m; Power Drift = -0.109 dB

Peak SAR (extrapolated) = 0.059 W/kg

SAR(1 g) = 0.016 mW/g; SAR(10 g) = 0.010 mW/g

Body Worn/Zoom Scan (7x7x7)/Cube 1: Measurement grid: dx=5mm, dy=5mm, dz=5mm

Reference Value = 1.44 V/m; Power Drift = -0.109 dB

Peak SAR (extrapolated) = 0.027 W/kg

SAR(1 g) = 0.014 mW/g; SAR(10 g) = 0.00864 mW/g

Maximum value of SAR (measured) = 0.015 mW/g

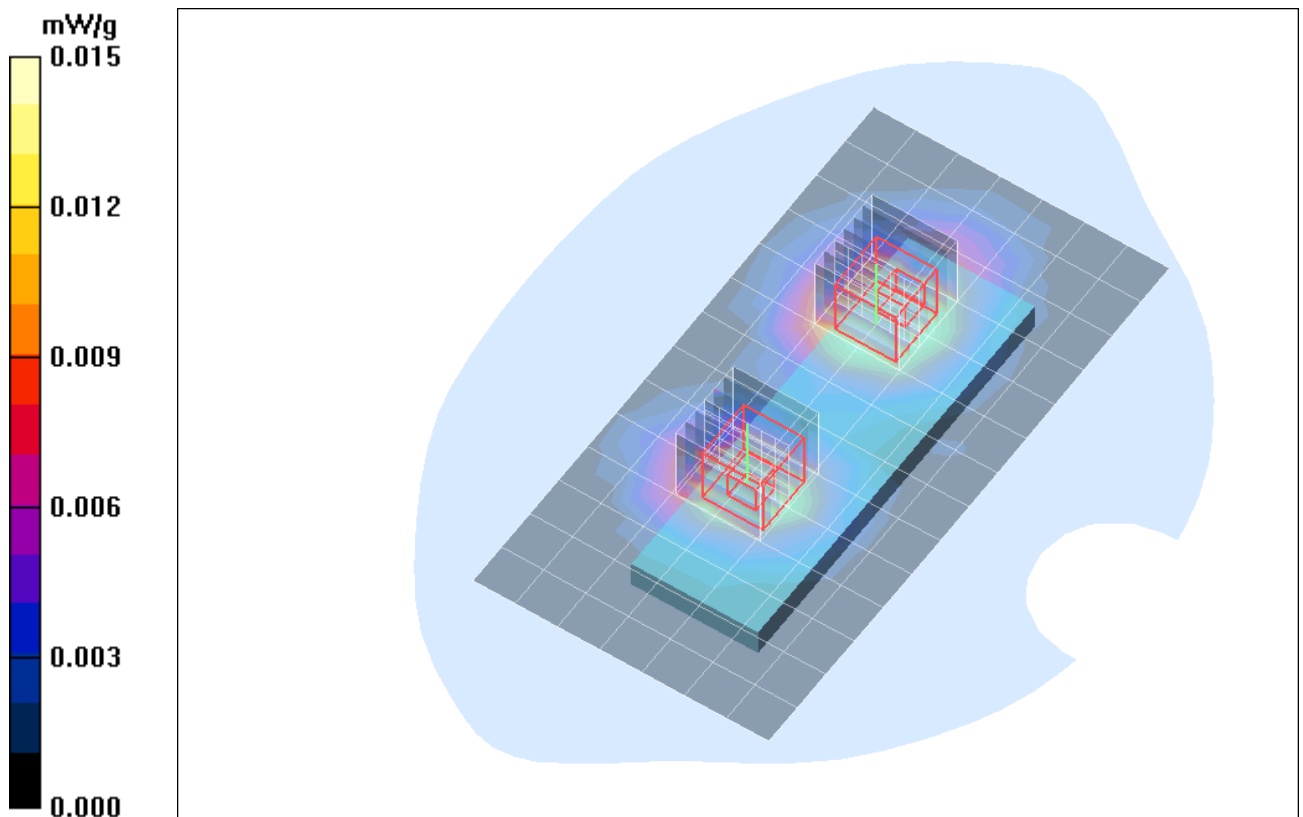


Fig. 16: SAR distribution for DECT US, channel 2, Position 2, 15 mm distance (March 14, 2011; Ambient Temperature: 21.8°C; Liquid Temperature: 21.4°C)

3 SAR z-axis Scans (Validation)

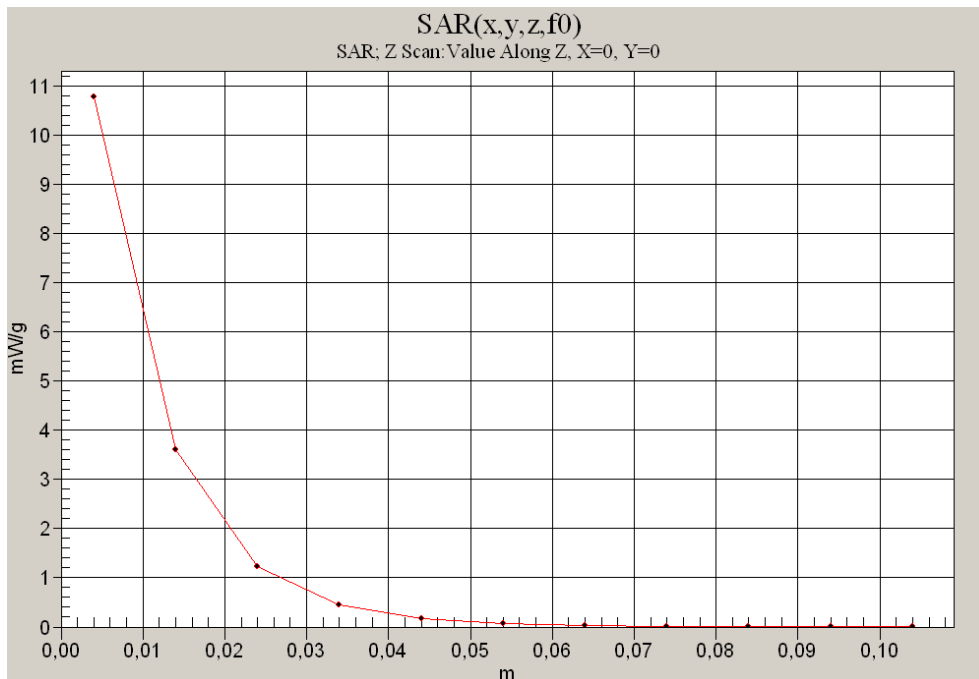


Fig. 17: SAR versus liquid depth, 1900 MHz, body (March 14, 2011; Ambient Temperature: 21.8°C; Liquid Temperature: 21.4°C).

4 SAR z-axis Scans (Measurements)

The following picture shows the plot of SAR versus liquid depth for the worst case values.

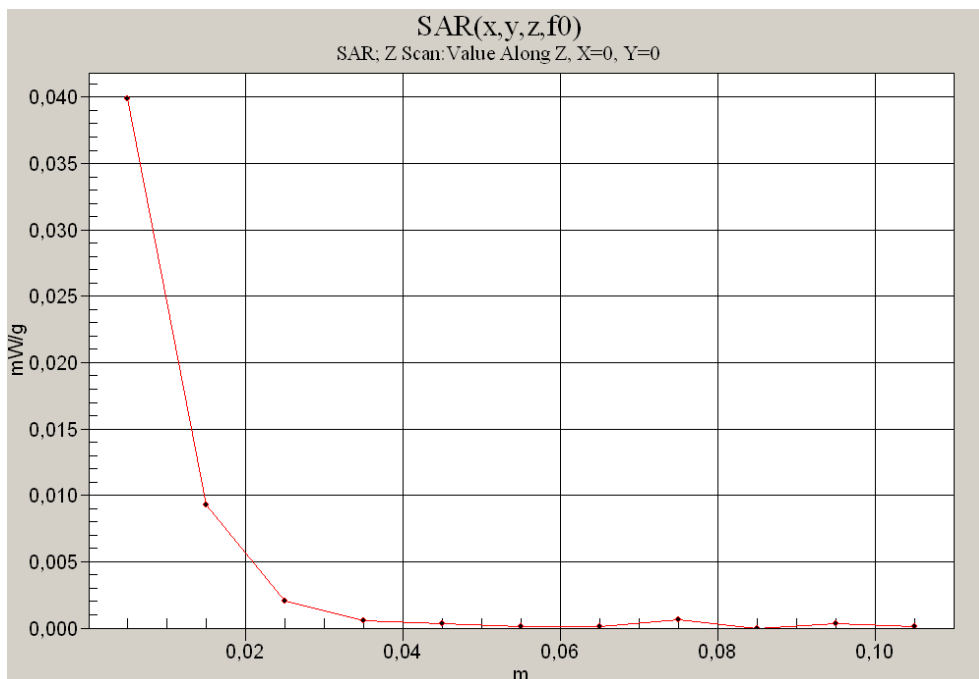


Fig. 18: SAR versus liquid depth, body: DECT US, channel 2, Antenna 2, Position 2, 0mm distance (March 14, 2011; Ambient Temperature: 21.8°C; Liquid Temperature: 21.4°C).