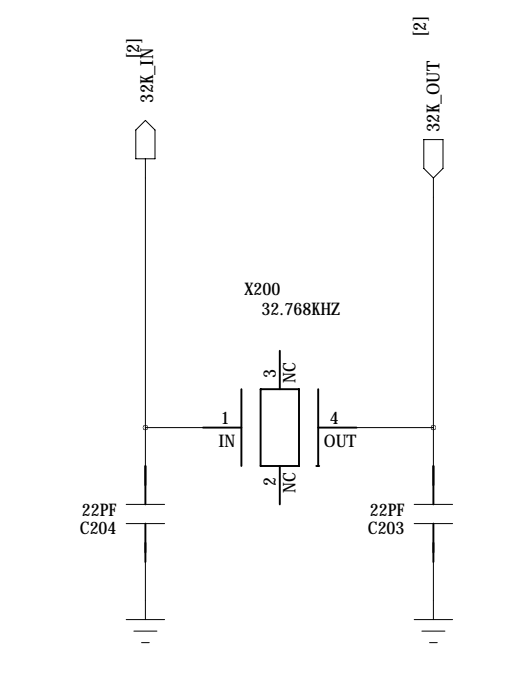
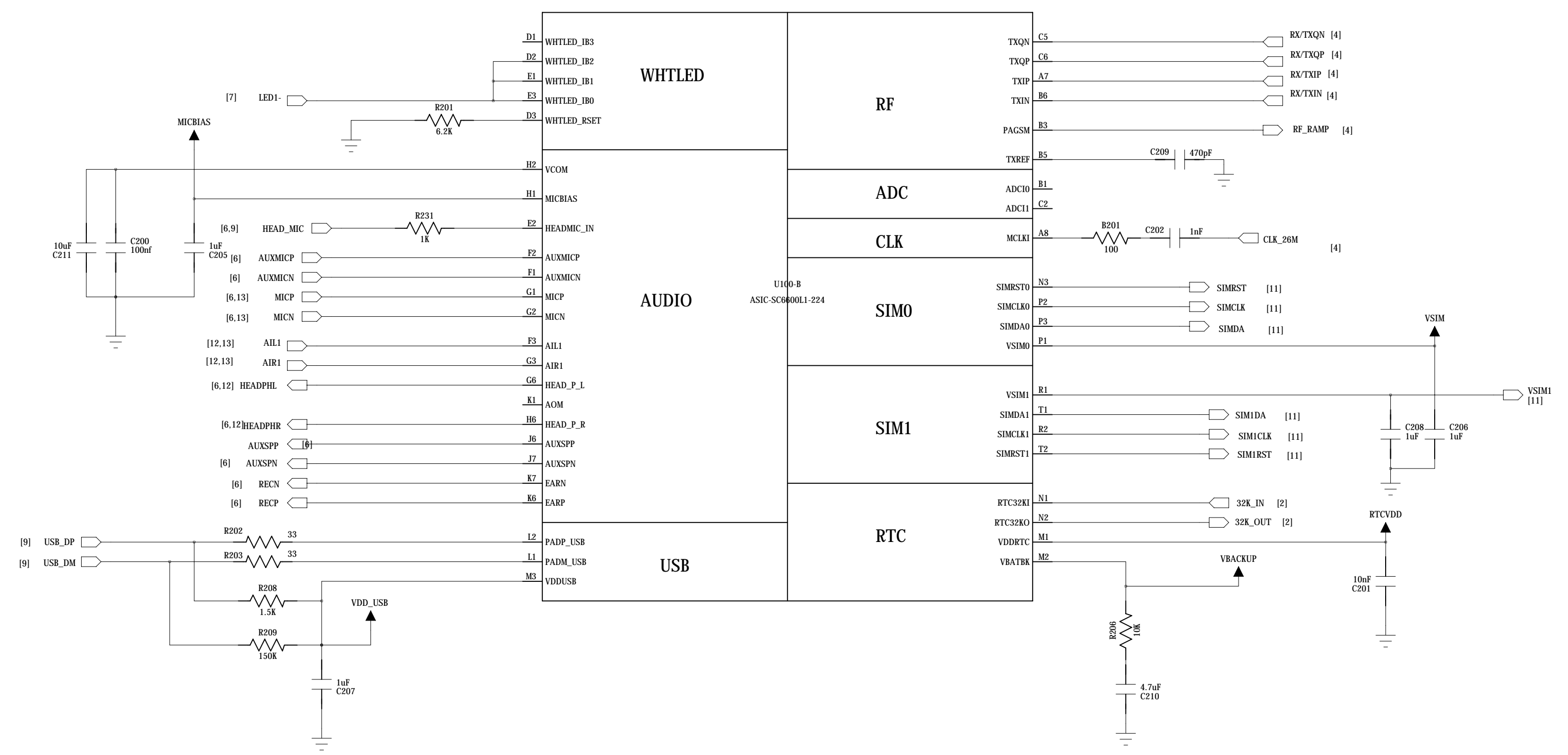


U0CTS is used as U1RXD
 U0RTS is used as U1TXD and NBOOT

Freecom		
Project#°	<project>	Design by#° <Design>
Title#°	<title>	Check by#° <check>
REV#°	<REV>	Approved#° <appr>
File NO.#°	<file no>	sheet: 1 / 13

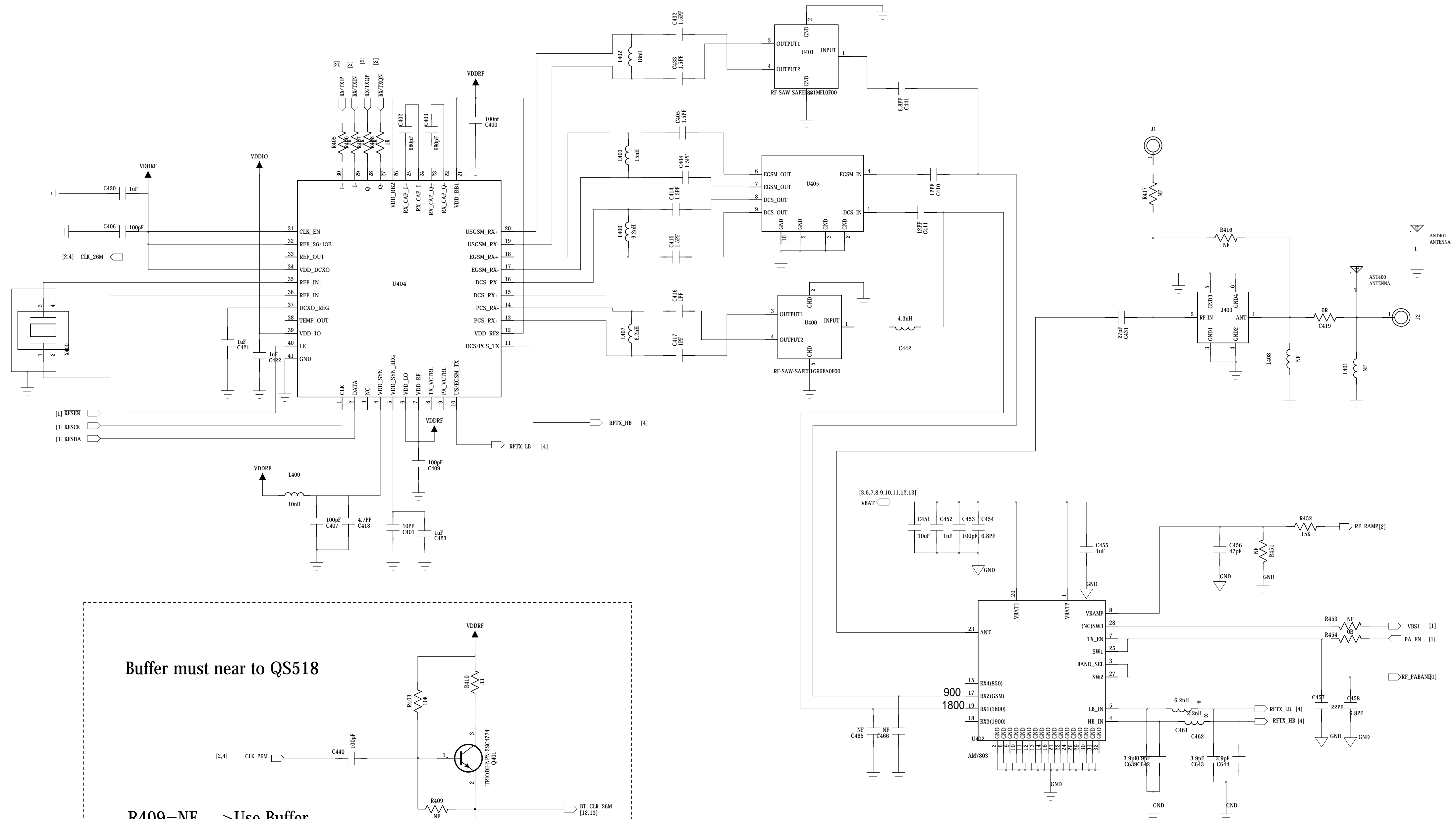
CAUTION: I2C has been pulled up by SC6600L, don't pull up it again



Freecom		
Project#°	<project>	Design by#° <Design>
Title#°	<title>	Check by#° <check>
REV#°	<REV>	Approve#° <appr>
File NO.#°	<file no>	sheet: 2 / 13

Dual band NF part:

U401f-U403f-C432f-C433f-C424f-C451
C416f-C417f-C412f-C454,L402,L407



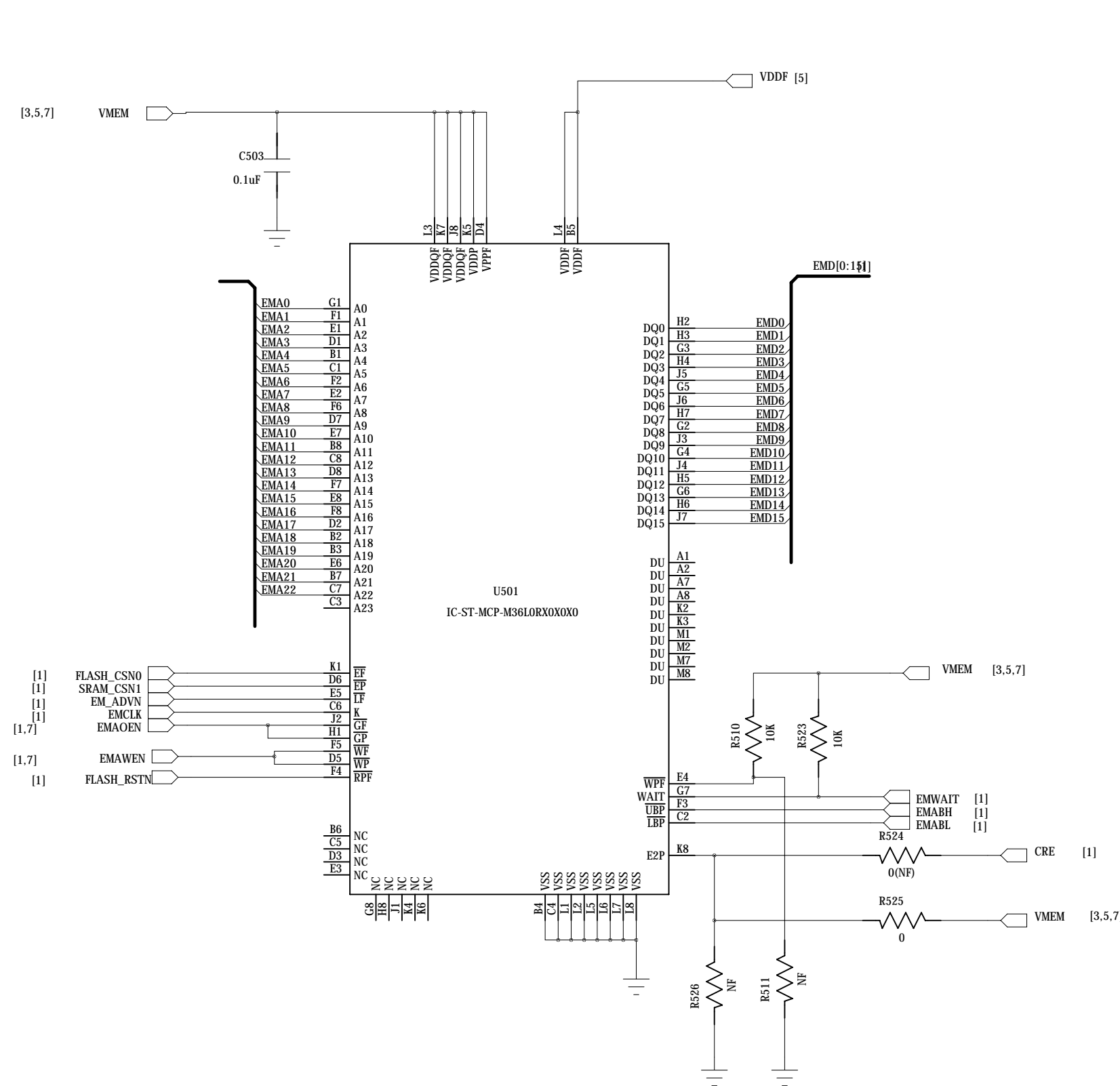
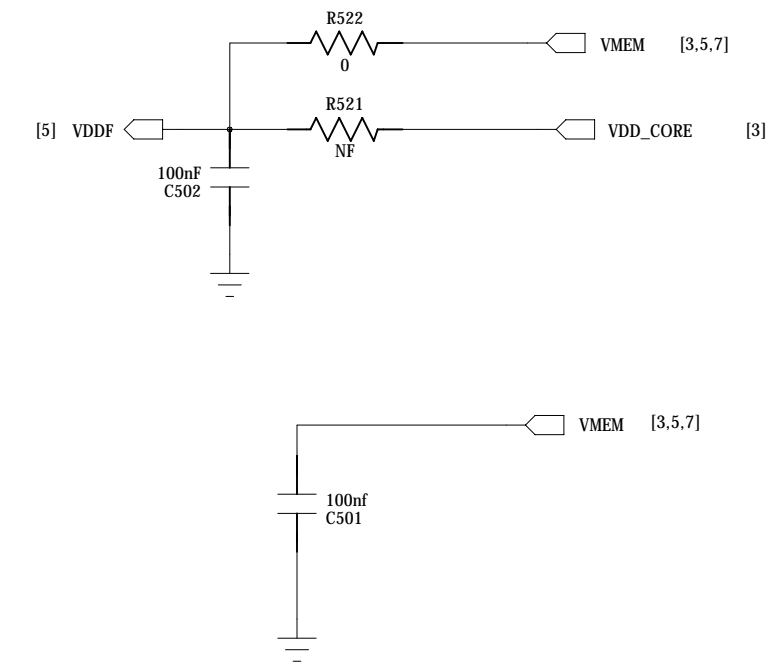
Buffer must near to QS518

R409=NF---->Use Buffer
R409=OR---->Not Use Buffer

Freecom	
Project#	<project>
Title#	<title>
REV#	<REV>
File NO.#	<file no>
Design by#	<Design>
Check by#	<check>
Approve#	<appr>
sheet:	4 / 13

NOR+pSRAM

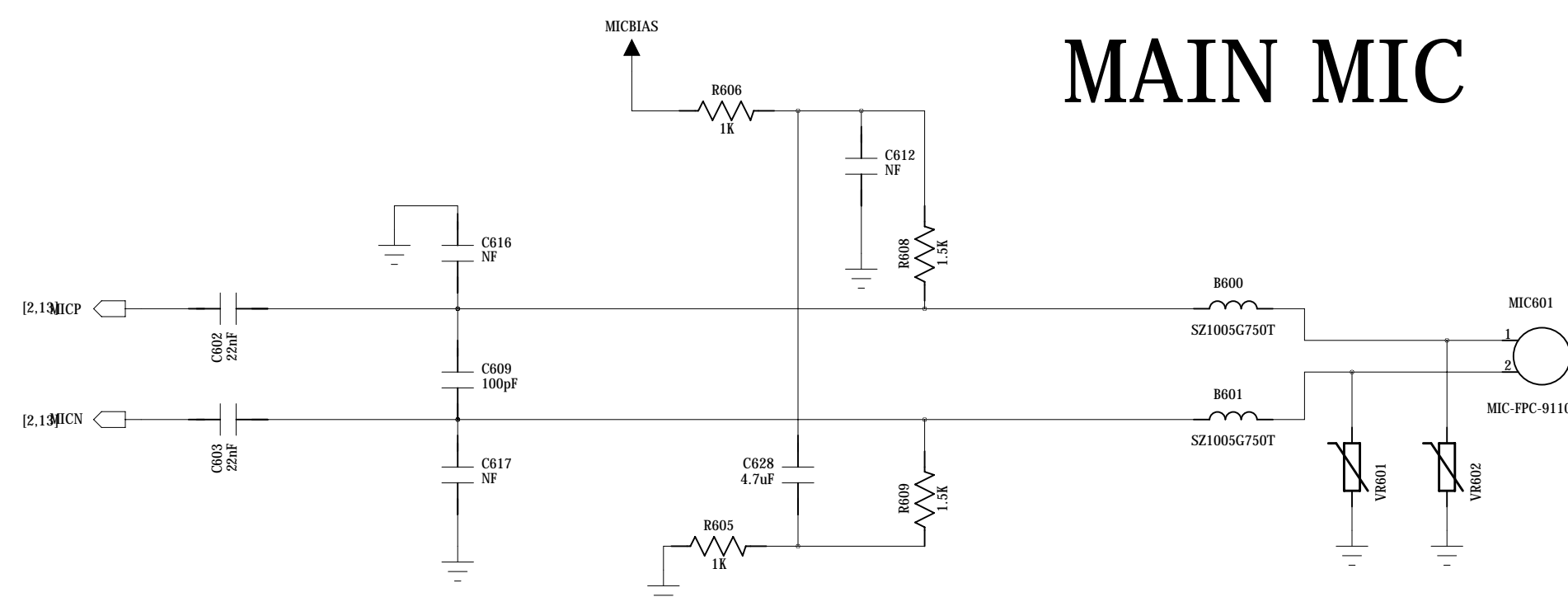
when stl3610t7050 R521 0R,R522 NC
 else R521 NC,R522 0R



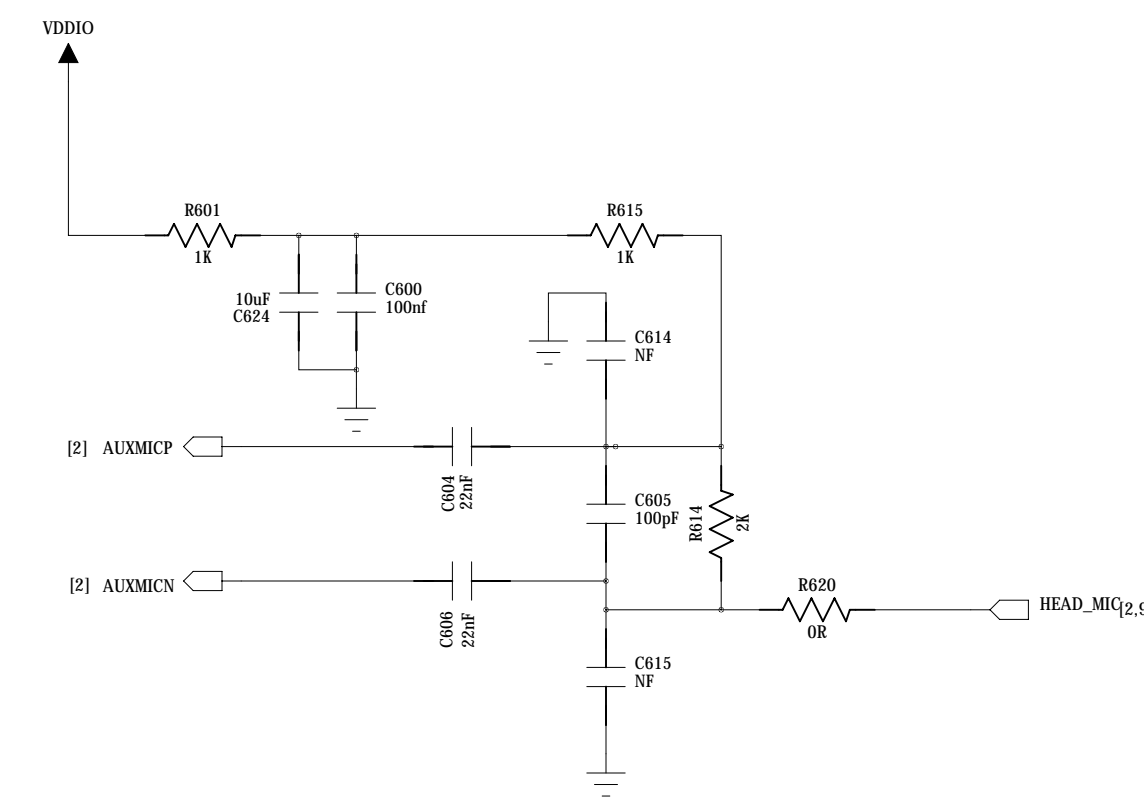
CAUTION: MCP signals have higher speed than before, layout carefully

Freecom	
Project#°	<project>
Design by#°	<Design>
Title#°	<title>
Check by#°	<check>
REV#°	<REV>
Approve#°	<appr>
File NO.#°	<file no>
sheet:	5 / 13

MAIN MIC



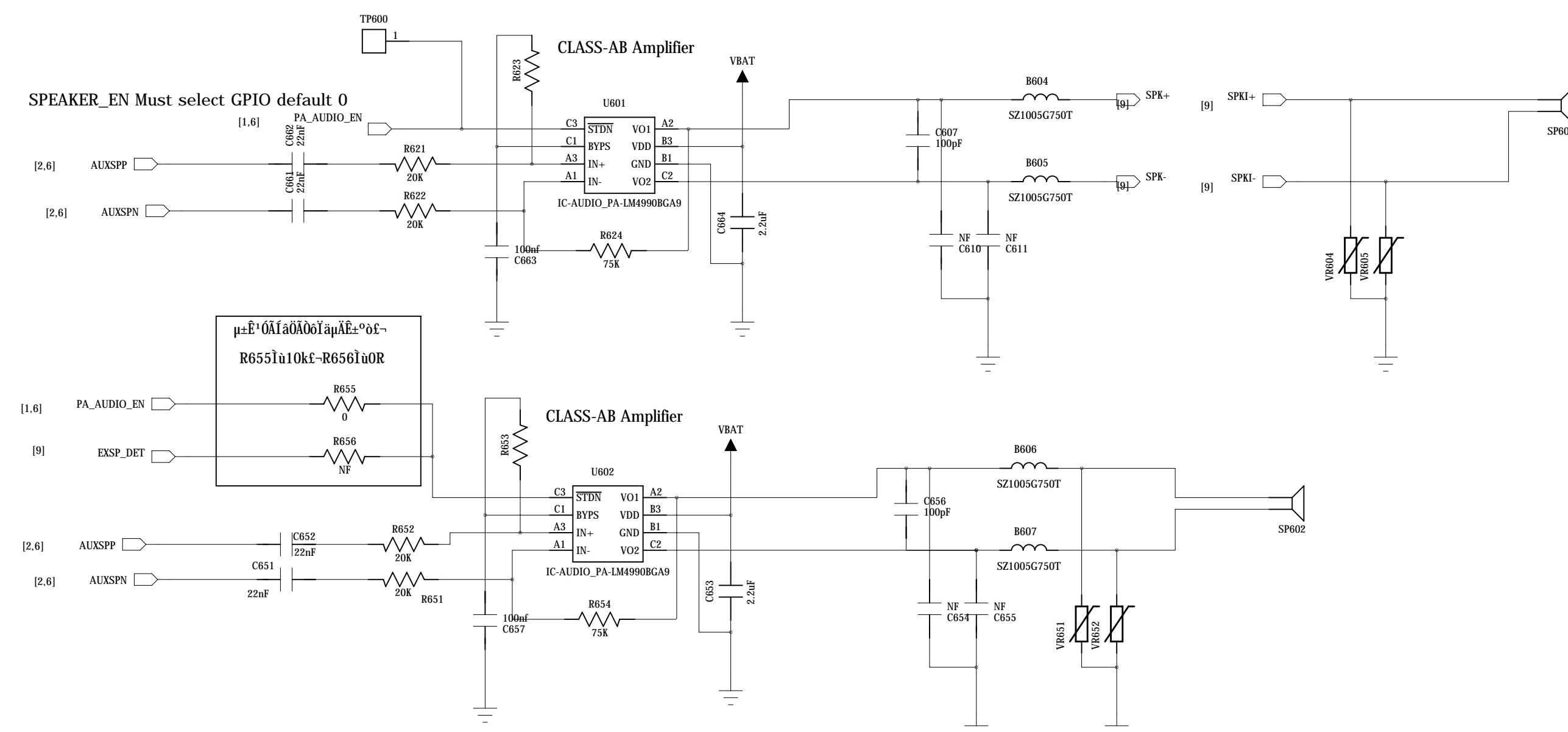
EAR-MIC



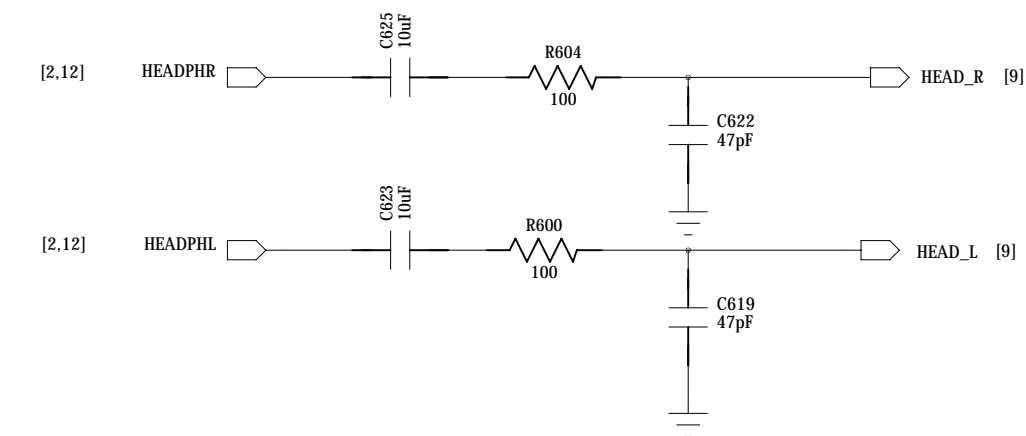
RECEIVER

Class AB

If use combined speaker and receiver ,then Analog switch are needed to prevent reverse current.Pls refer to <<SC6600H Speaker&Receiver Application Notes>>



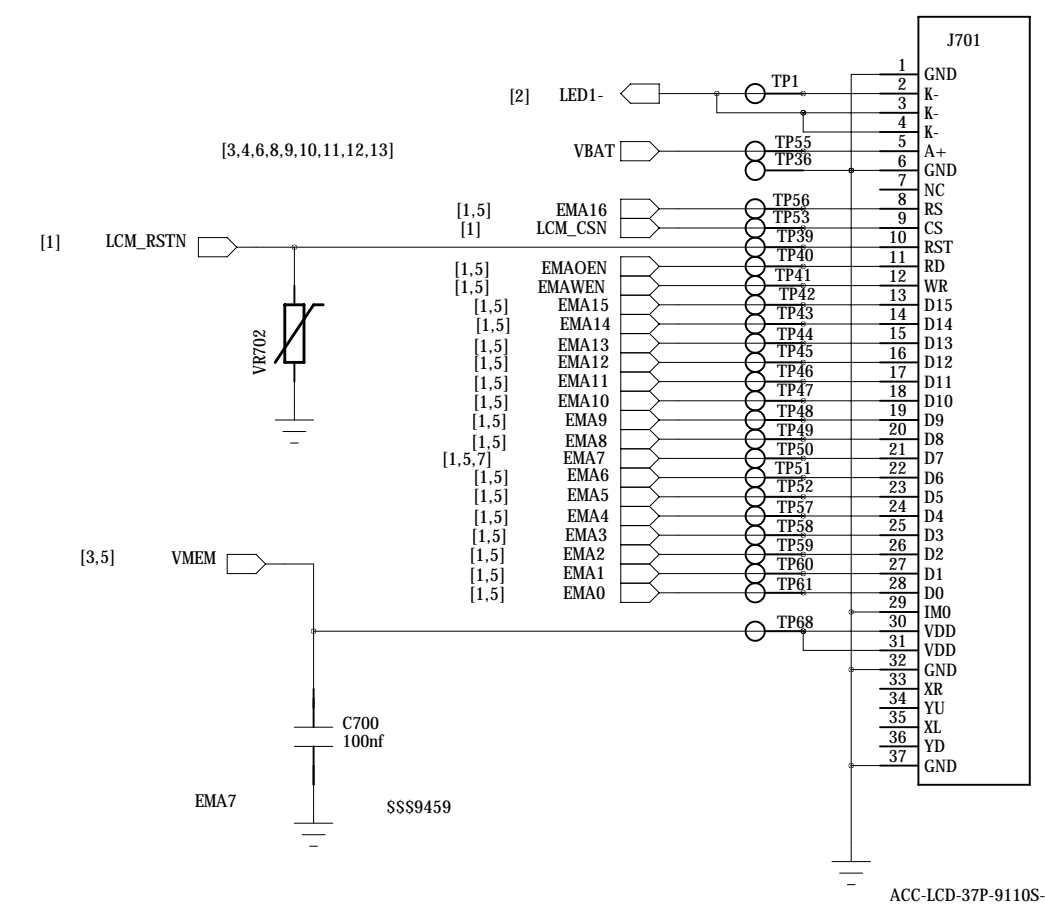
HEADPHONE



Freecom

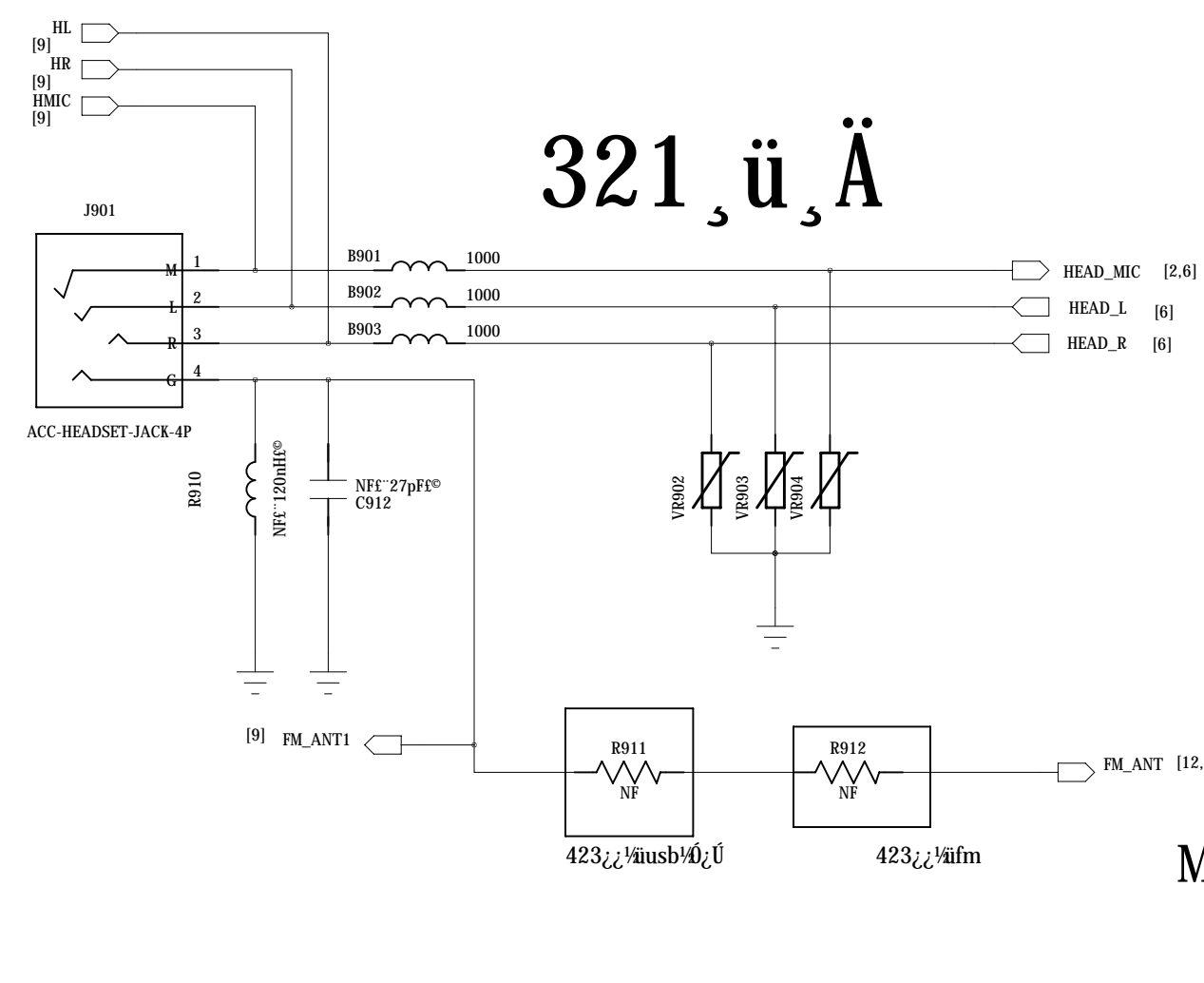
Project ^o	<project>	Design by ^o	<Design>
Title ^o	<title>	Check by ^o	<check>
REV ^o	<REV>	Approve ^o	<appr>
File NO. ^o	<file no>	sheet:	6 / 13

LCM_2.0/LCM_1.77



Freecom	
Project#°	<project>
Title#°	<title>
REV#°	<REV>
File NO.#°	<file no>
Design by#°	<Design>
Check by#°	<check>
Approve#°	<appr>
sheet:	7 / 13

INTERFACE



321, ü, Ä

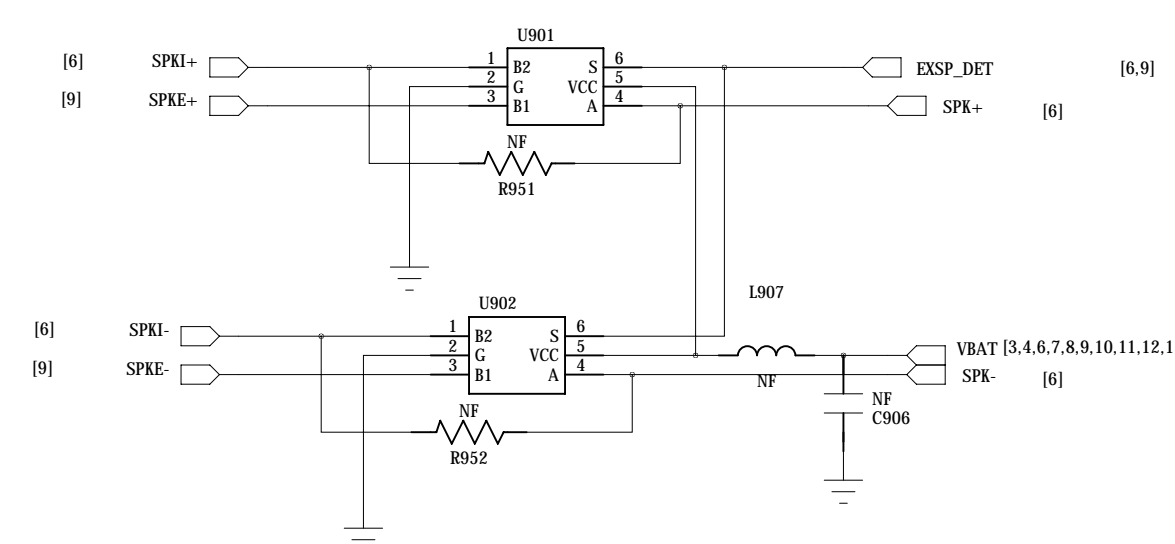
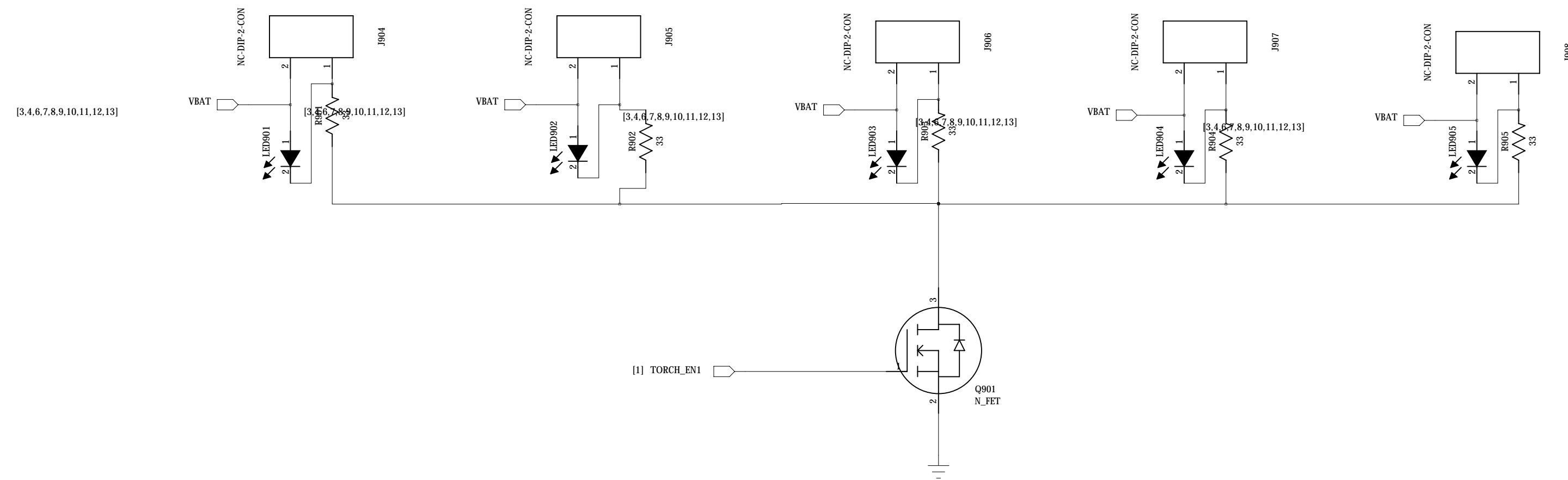
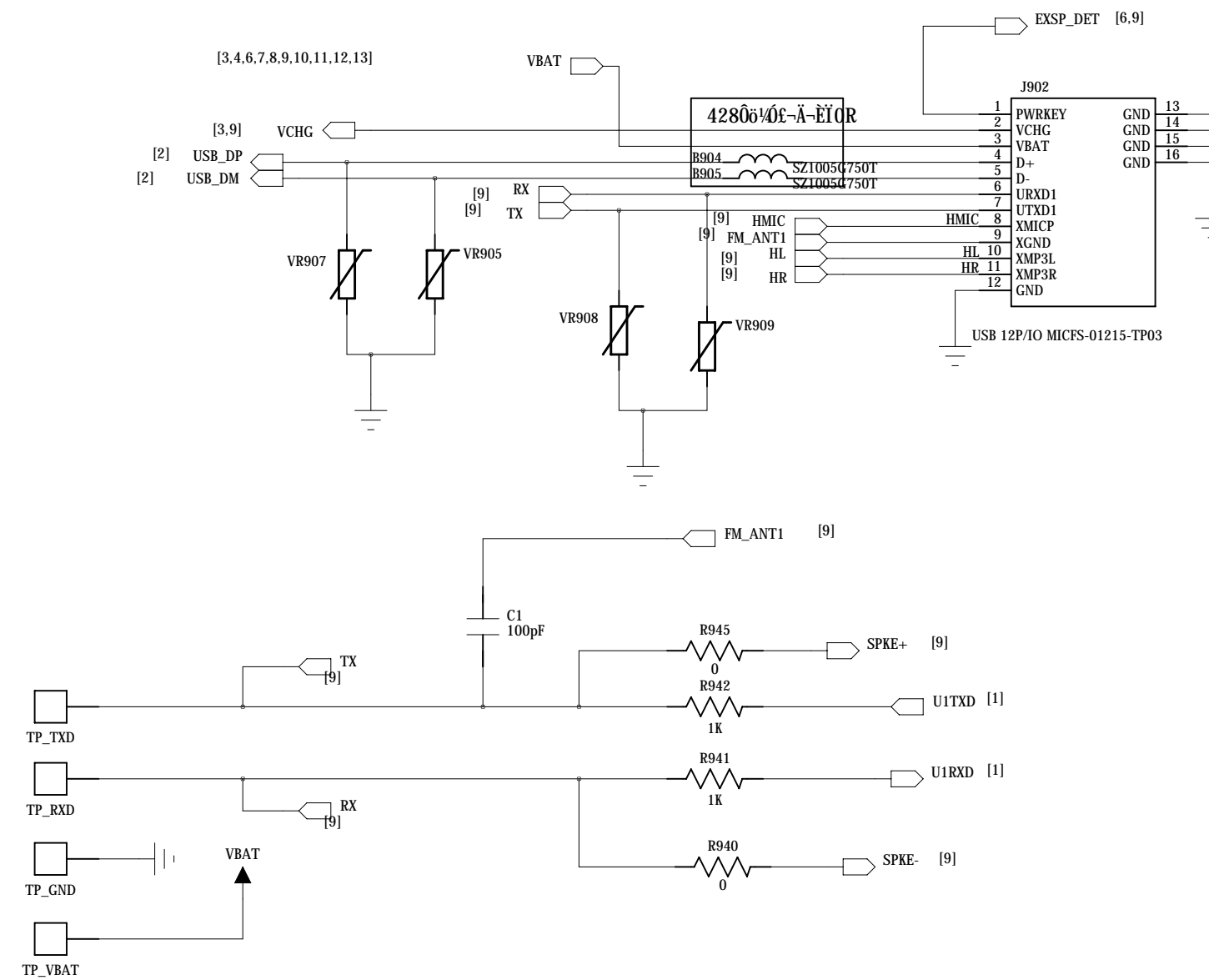
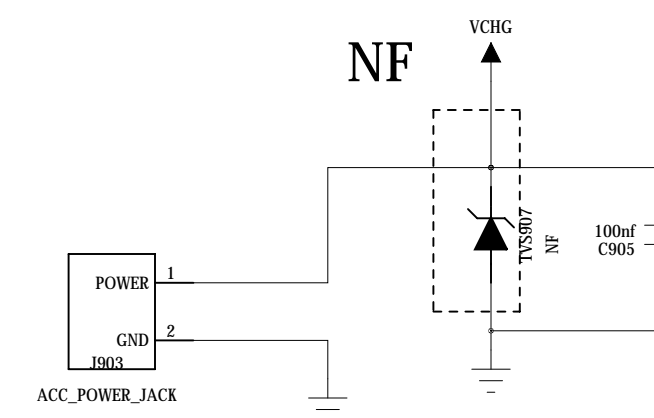
MARK point

Boot select:

UORSTN = low --> boot from USB

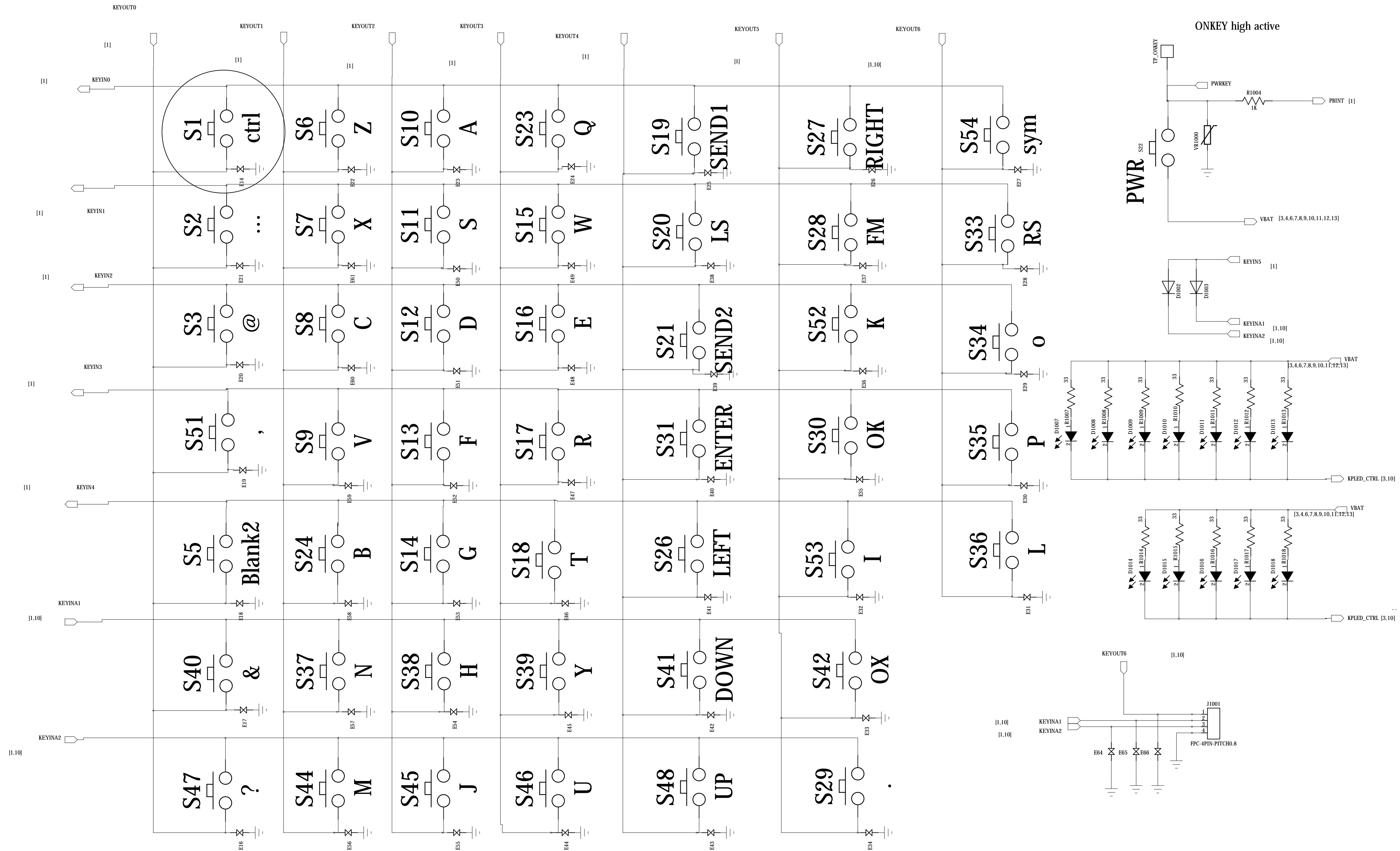
UORSTN = high --> boot from NOR or UART

NOTE: keyin0 & keyout0 pressed when power up will also lead to USB boot



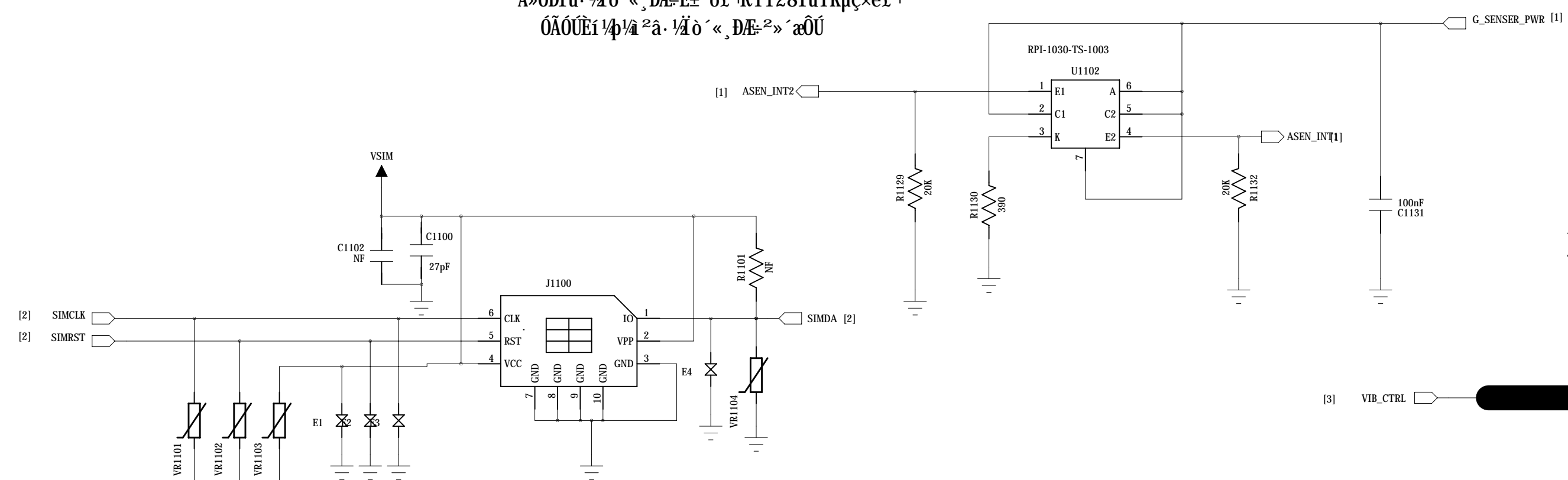
Freecom		
Project#	<project>	Design by# <Design>
Title#	<title>	Check by# <check>
REV#	<REV>	Approve# <appr>
File NO.#	<file no>	sheet: 9 / 13

Press this button when power up will make the phone boot from USB



Freecom		
Project#°	<project>	Design by#° <Design>
Title#°	<title>	Check by#° <check>
REV#°	<REV>	Approve#° <appr>
File NO.#°	<file no>	sheet: 10/ 13

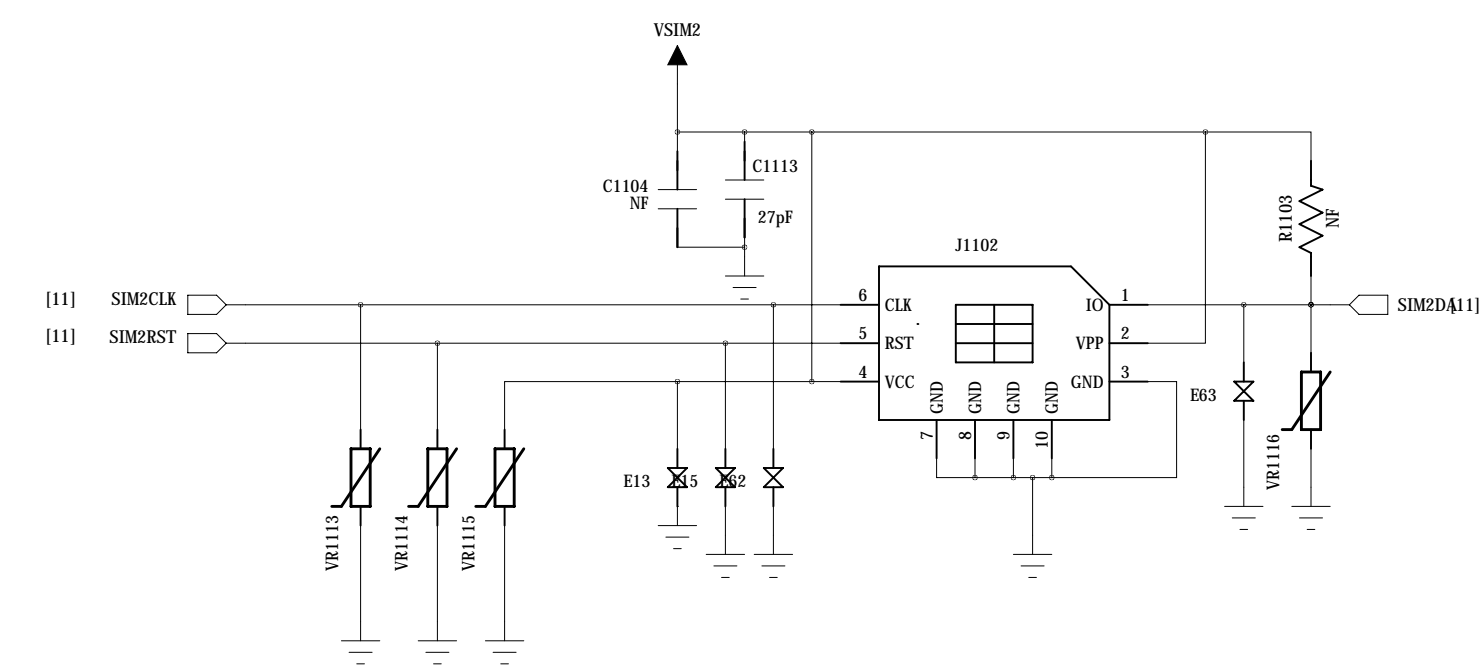
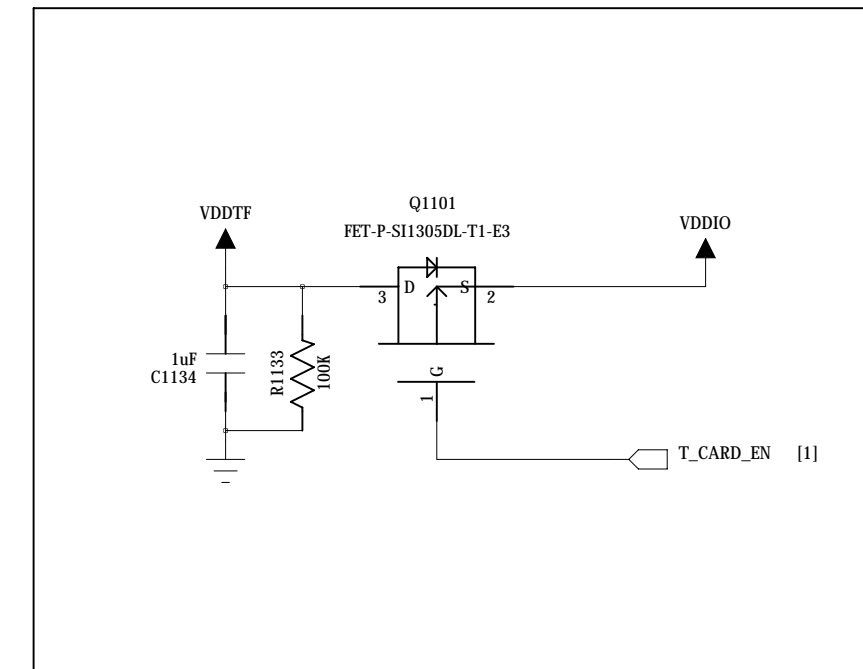
Απόδειξη ότι « ΔΕ-Ε±°δ£-R11281ù1Κμç×è£-
 ΟΑ00Εi¼¼²á·¼ò'«·ΔΕ²»'α00



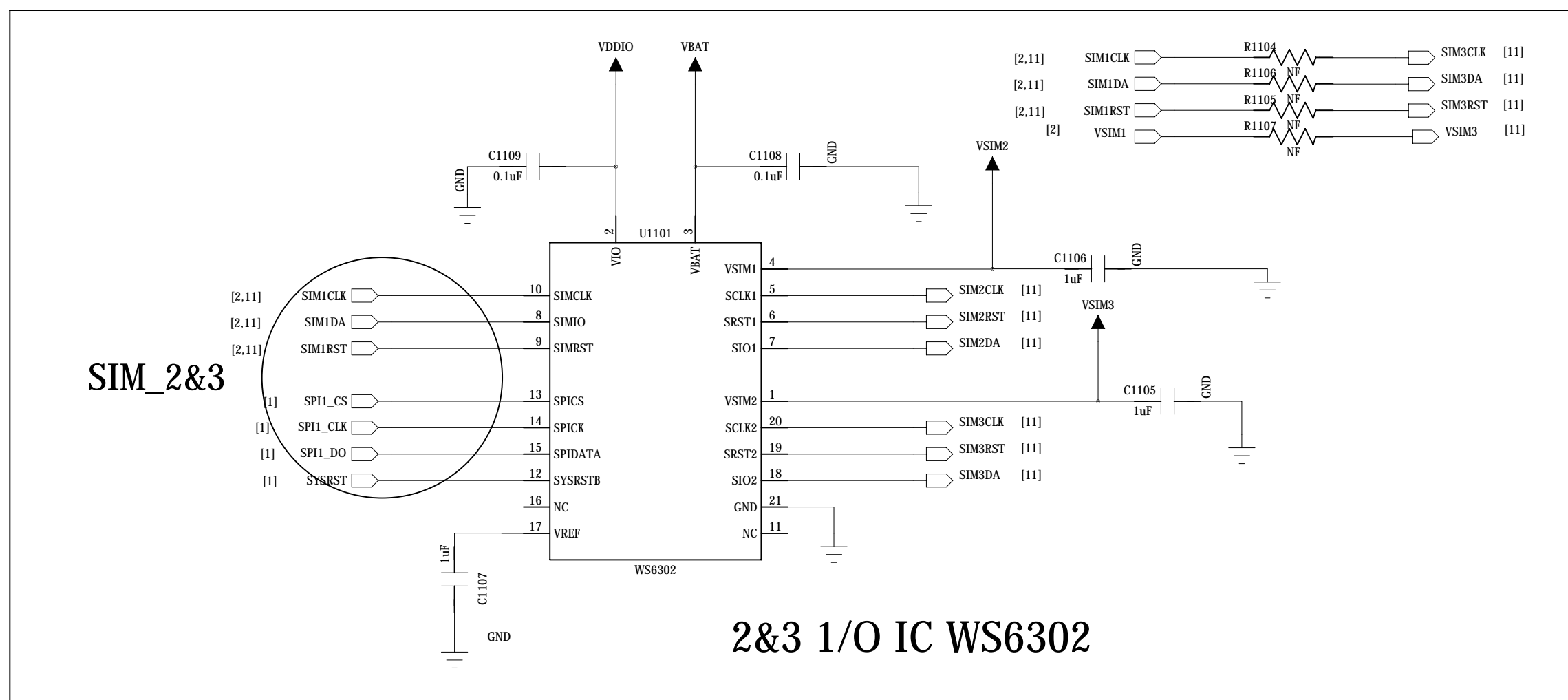
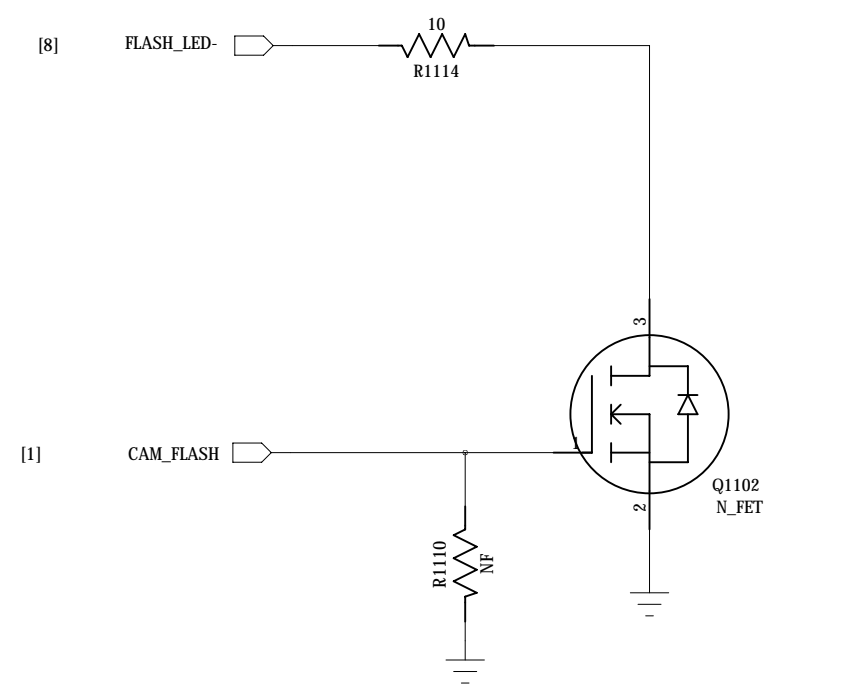
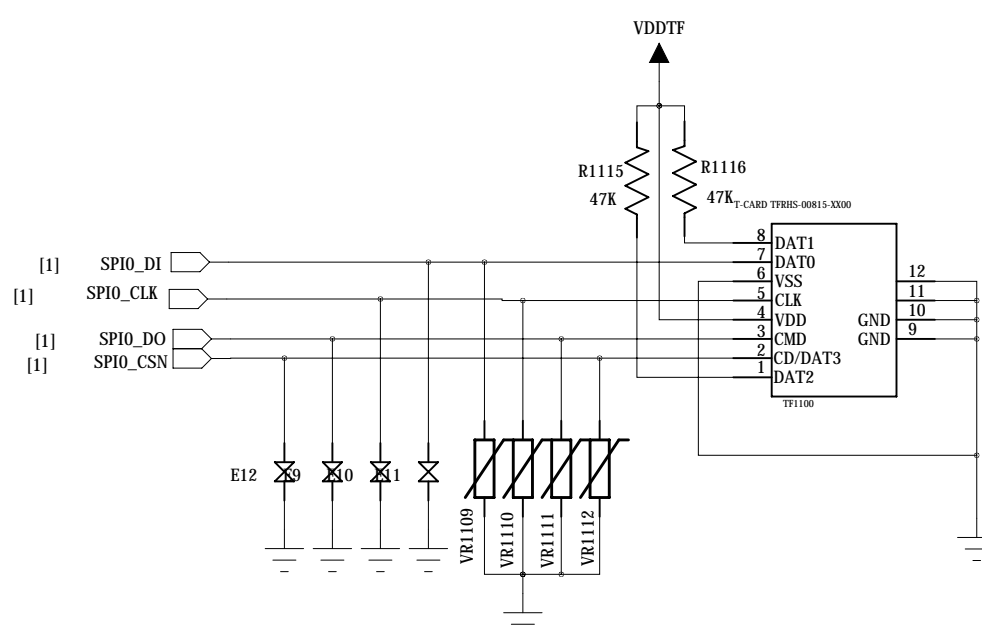
SIM1

should afford 100mA current

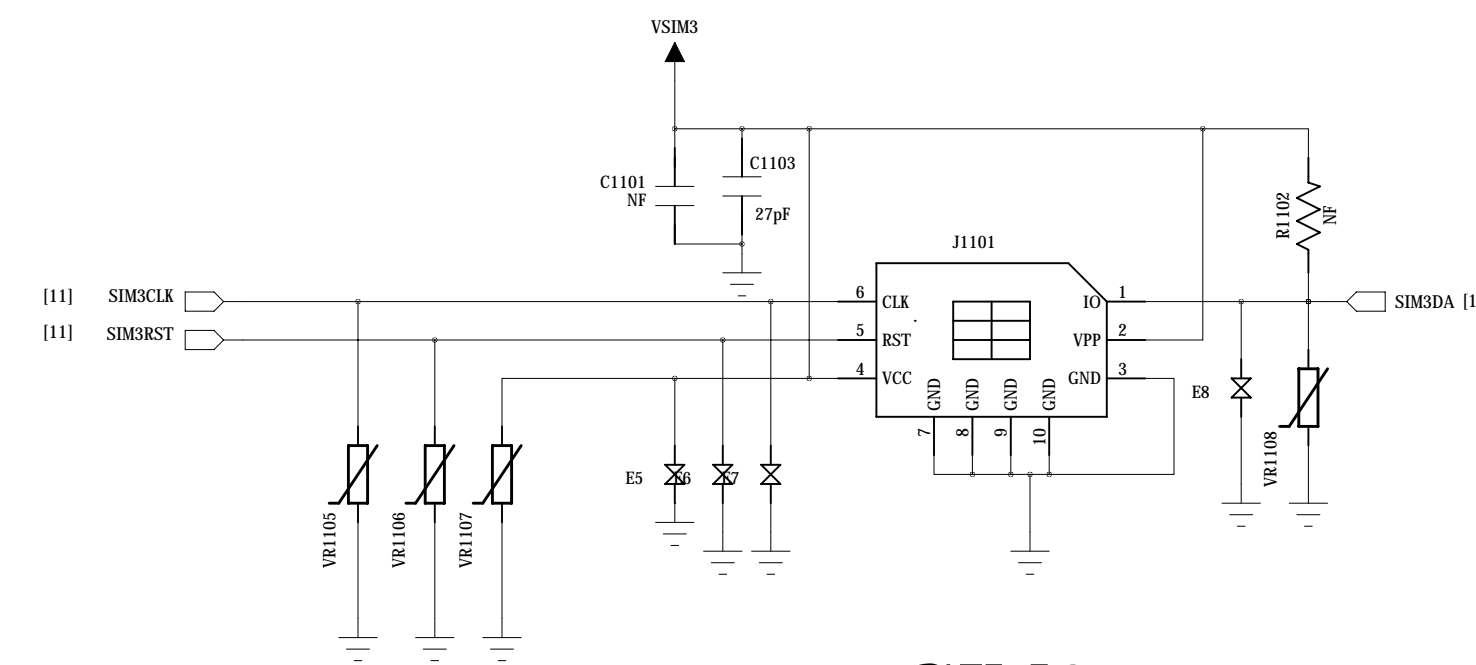
DSIM+TFDj °à



SIM3

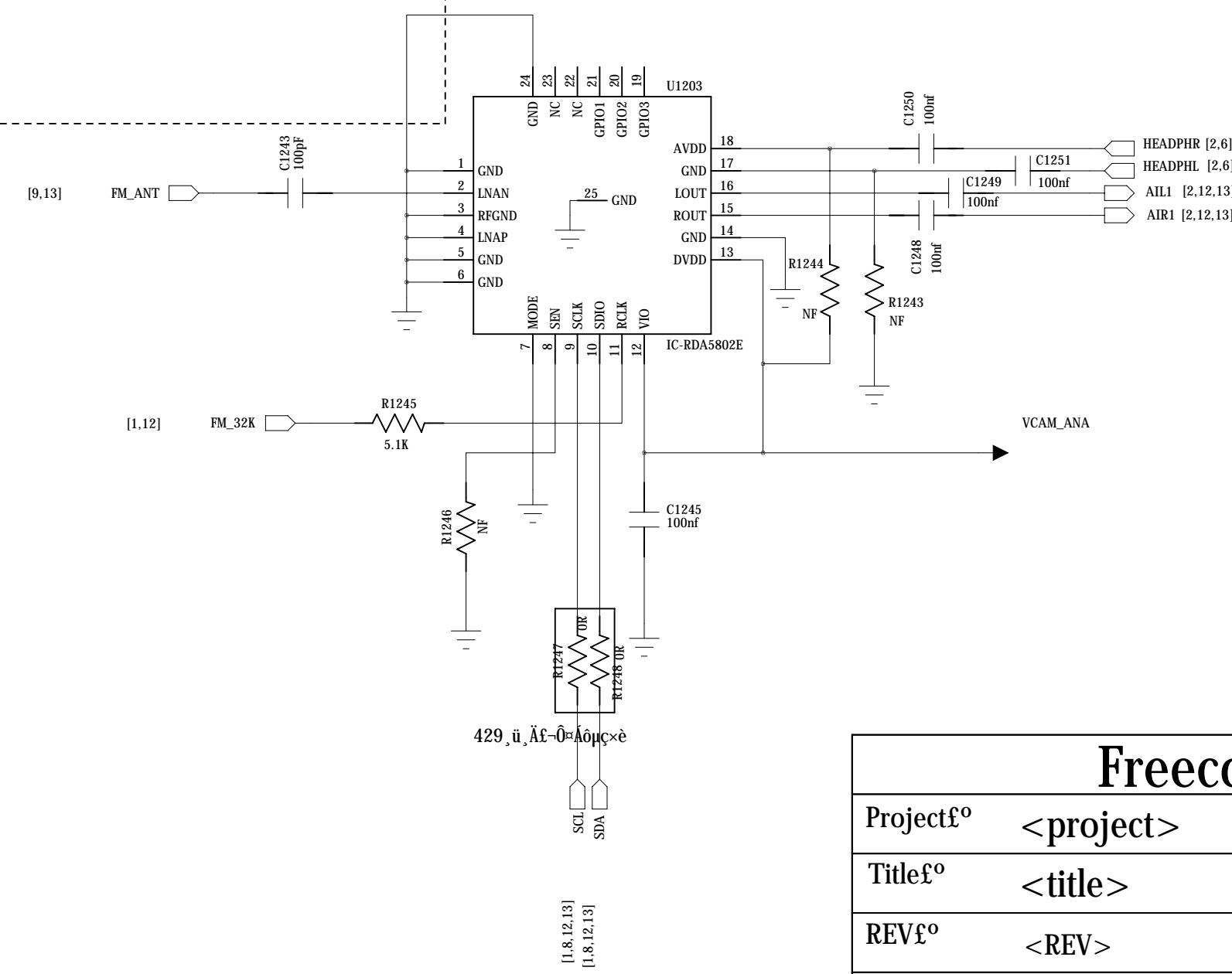
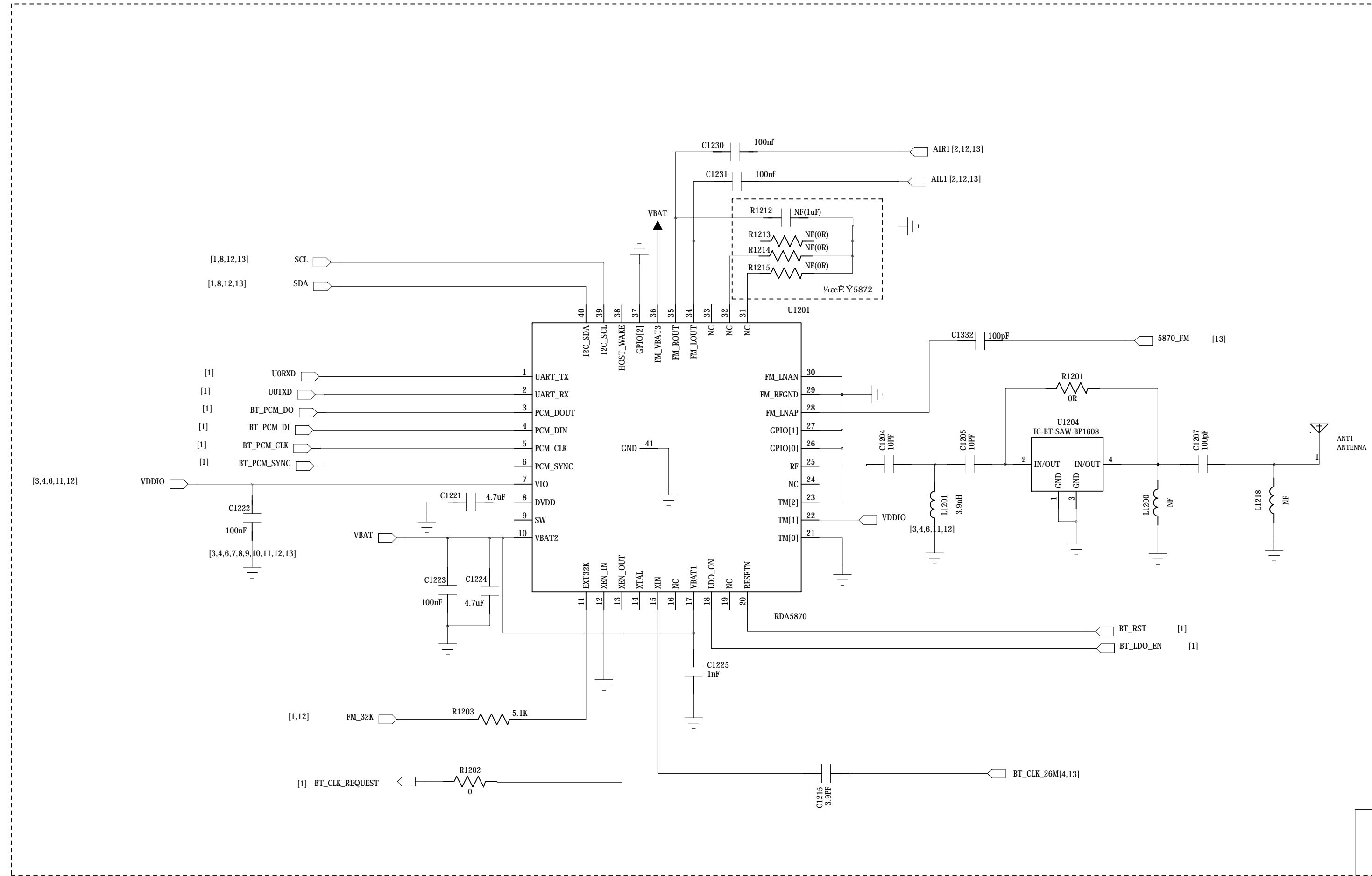


2&3 I/O IC WS6302



SIM2

Freecom		
Project£°	<project>	Design by£° <Design>
Title£°	<title>	Check by£° <check>
REV£°	<REV>	Approve£° <appr>
File NO.£°	<file no>	sheet: 11/ 13



Freecom		
Project#°	<project>	Design by#° <Design>
Title#°	<title>	Check by#° <check>
REV#°	<REV>	Approved#° <appr>
File NO.#°	<file no>	sheet: 12/ 13

