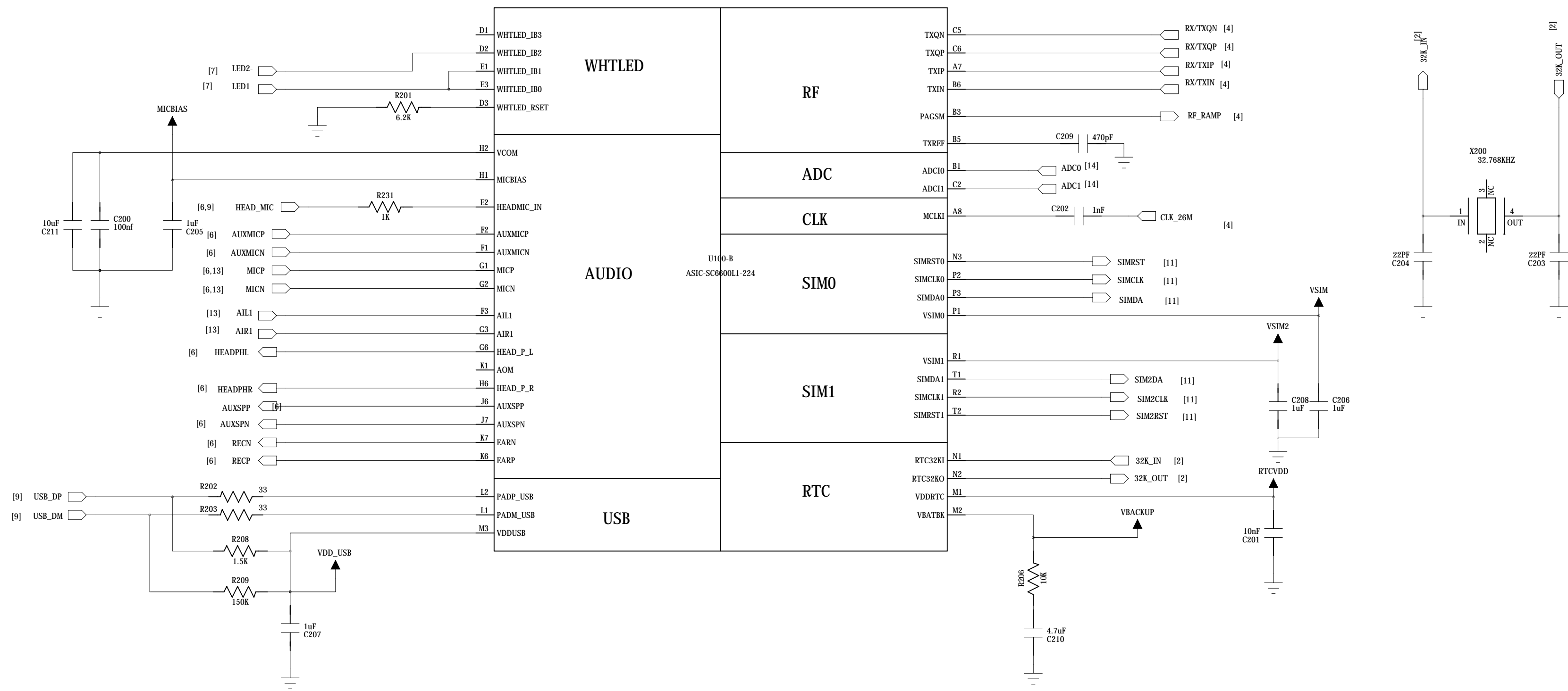
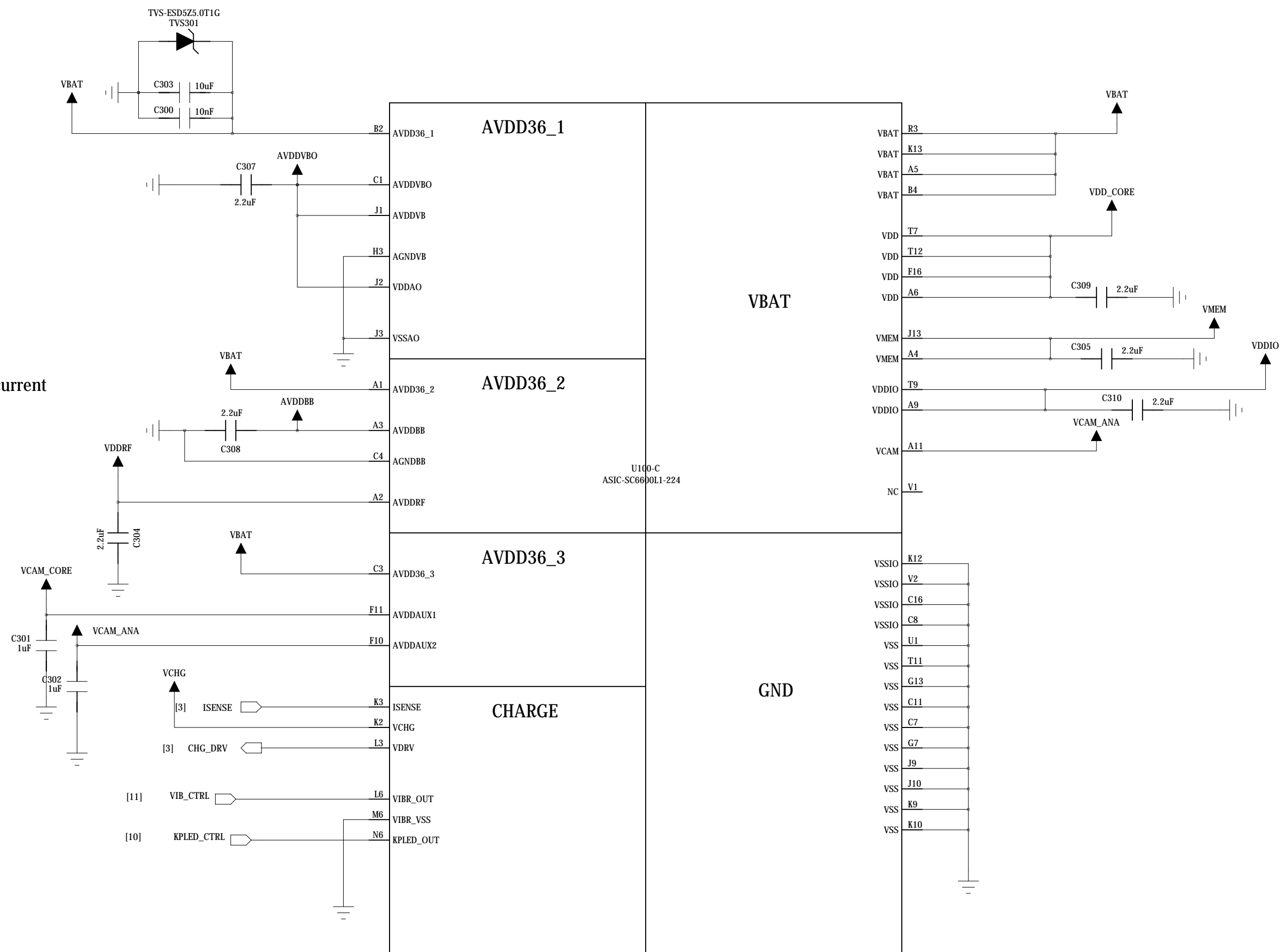
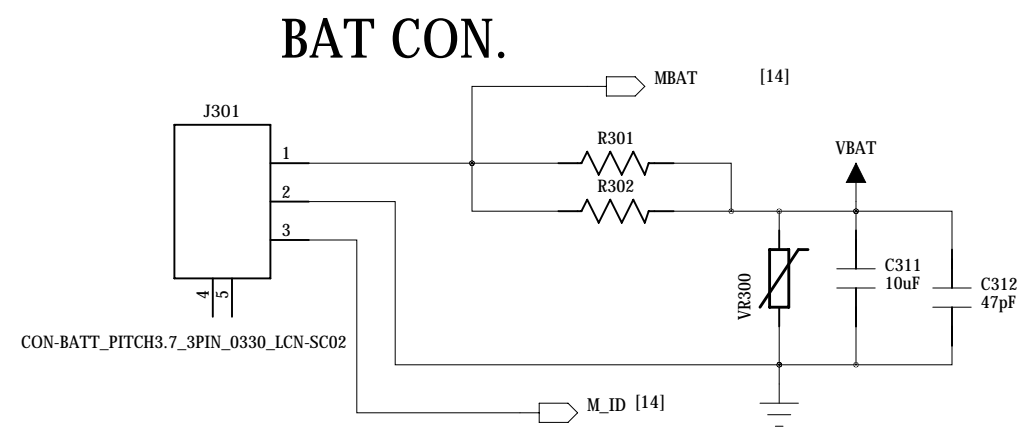
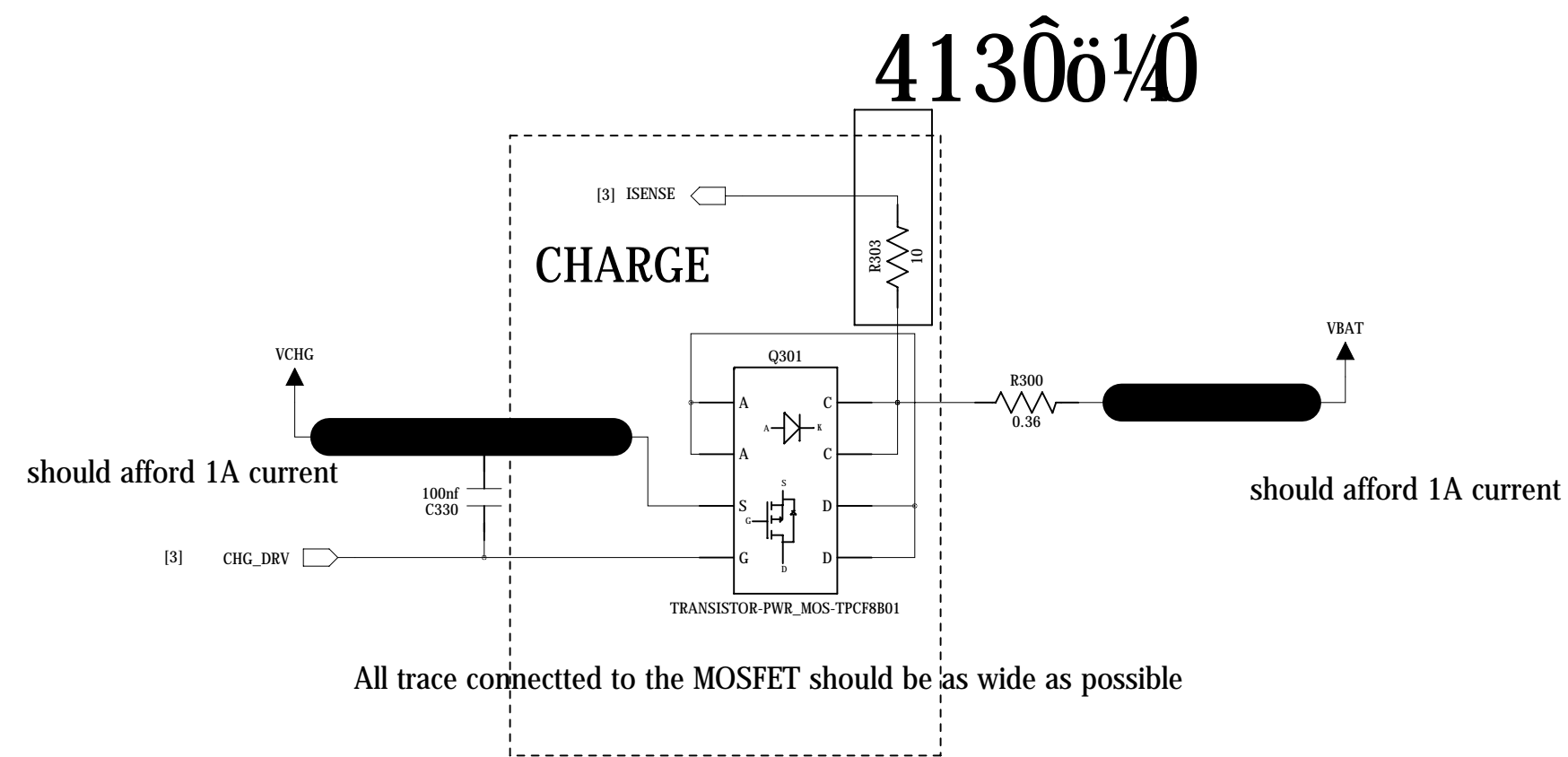


CAUTION: I2C has been pulled up by SC6600L, don't pull up it again

Freecom		
Project#°	<project>	Design by#° <Design>
Title#°	<title>	Check by#° <check>
REV#°	<REV>	Approve#° <appr>
File NO.#°	<file no>	sheet: 1 / 14



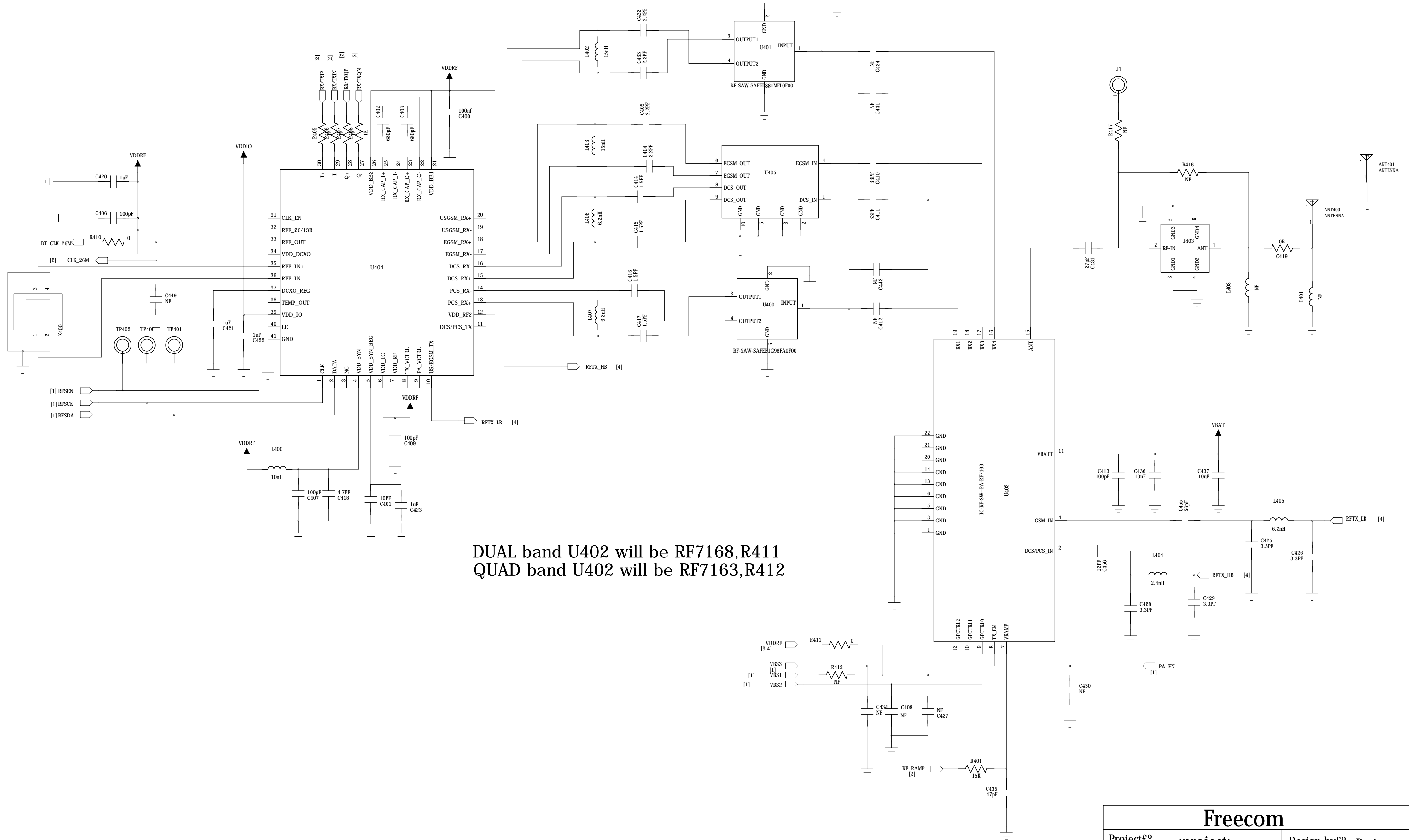
Freecom		
Project#°	<project>	Design by#° <Design>
Title#°	<title>	Check by#° <check>
REV#°	<REV>	Approve#° <appr>
File NO.#°	<file no>	sheet: 2 / 14



Freecom	
Project#	<project>
Title#	<title>
REV#	<REV>
File NO.#	<file no>
Design by#	<Design>
Check by#	<check>
Approve#	<appr>
sheet:	3 / 14

Dual band NF part:

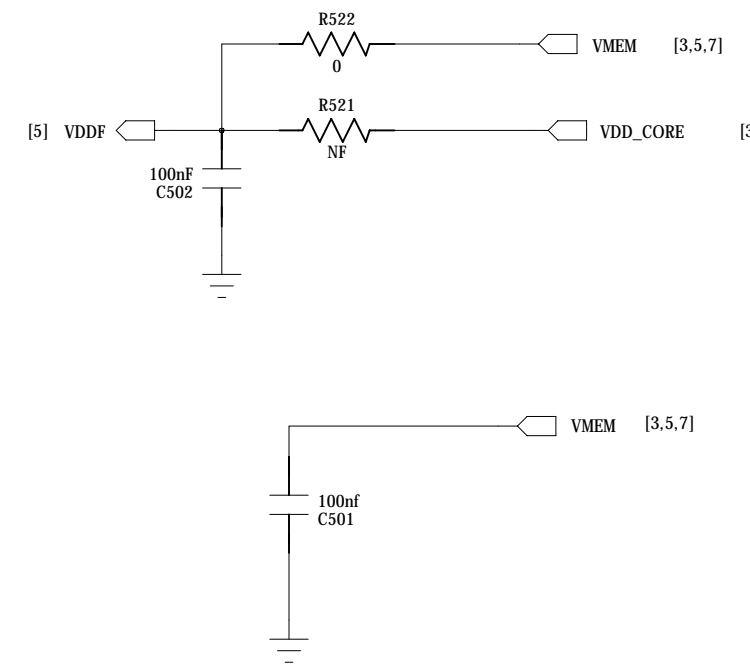
U401f-U403f-C432f-C433f-C424f-C451
C416f-C417f-C412f-C454,L402,L407



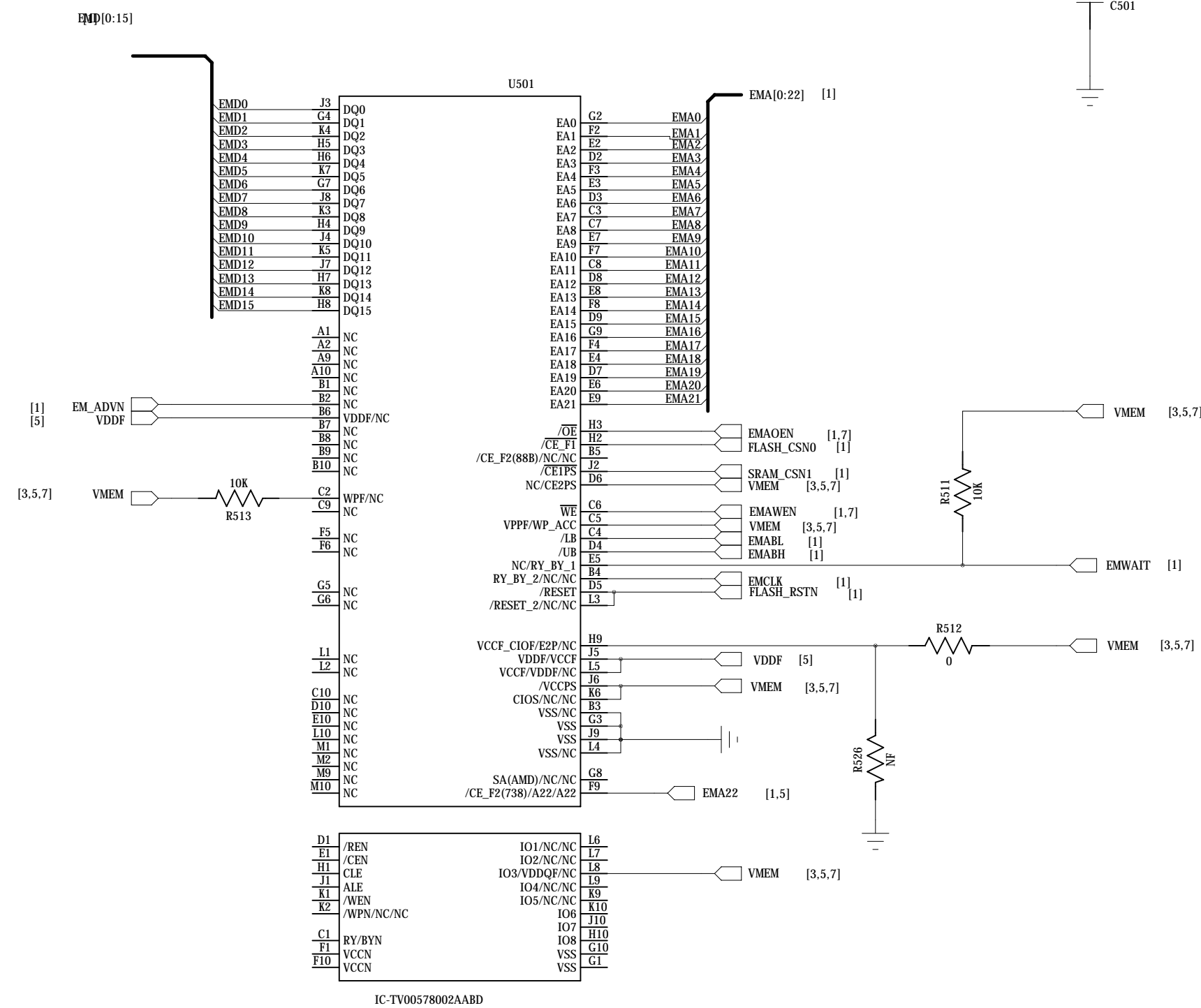
DUAL band U402 will be RF7168,R411
QUAD band U402 will be RF7163,R412

Freecom		
Project ^o	<project>	Design by ^o <Design>
Title ^o	<title>	Check by ^o <check>
REV ^o	<REV>	Approve ^o <appr>
File NO. ^o	<file no>	sheet: 4 / 14

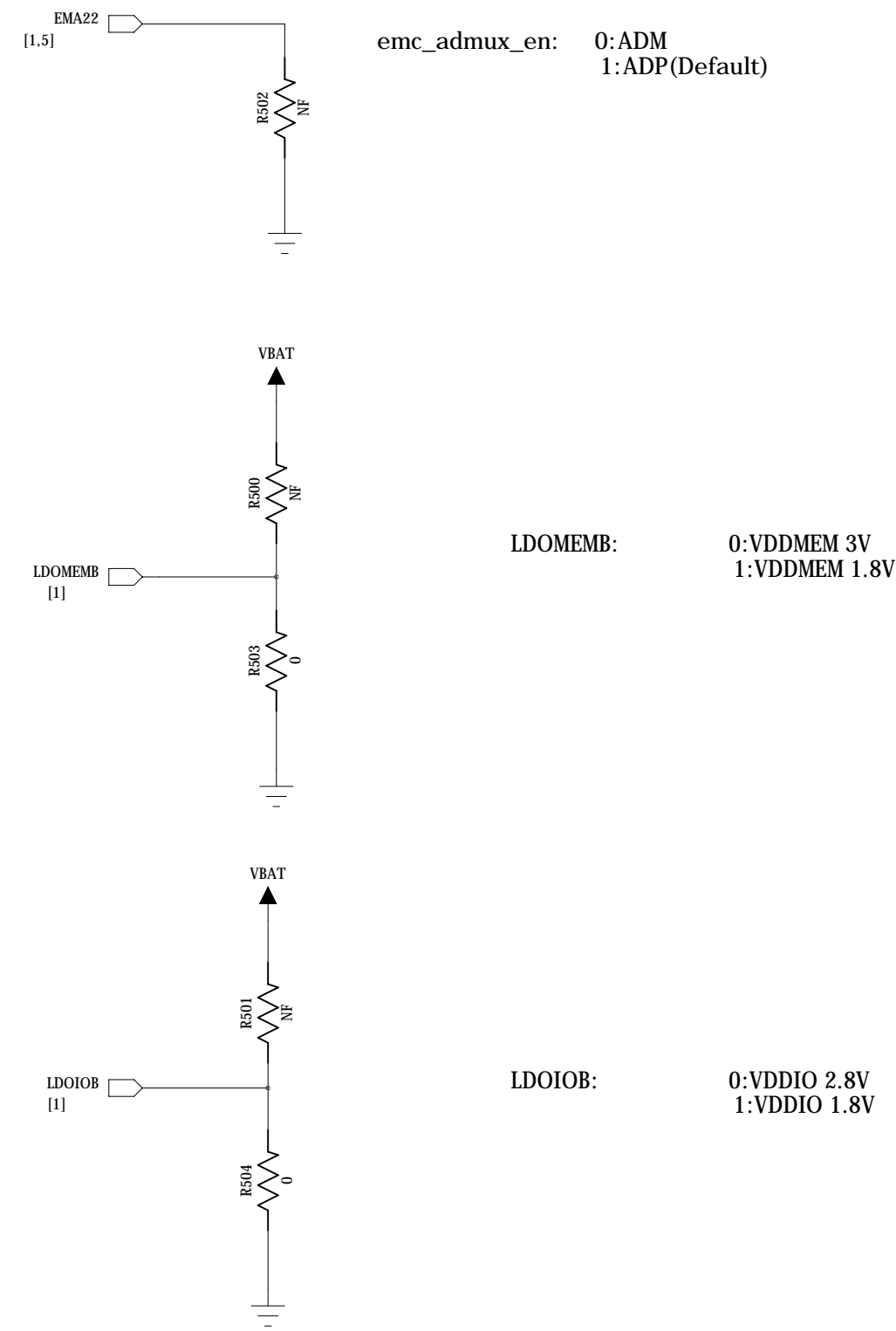
when stl36l0t7050 R521 0R,R522 NC
else R521 NC,R522 0R



NOR+pSRAM



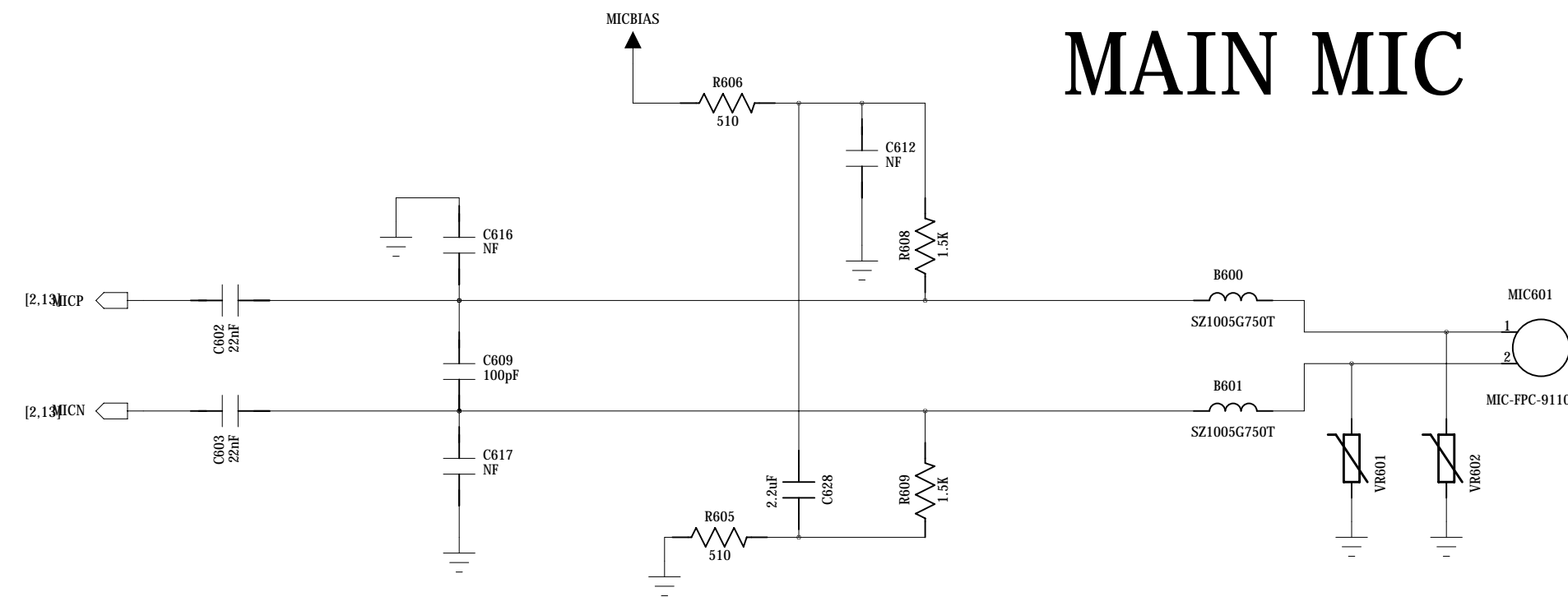
Strapping List



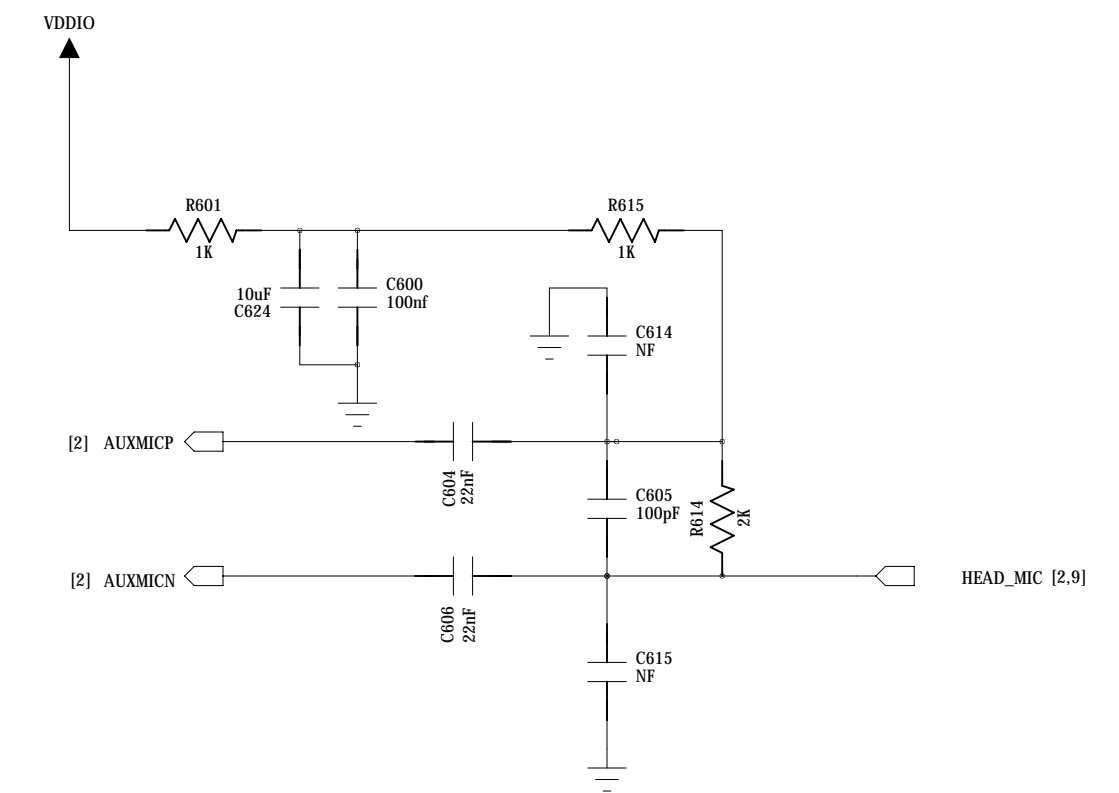
CAUTION: MCP signals have higher speed than before, layout carefully

Freecom		
Project#°	<project>	Design by#° <Design>
Title#°	<title>	Check by#° <check>
REV#°	<REV>	Approve#° <appr>
File NO.#°	<file no>	sheet: 5 / 14

MAIN MIC



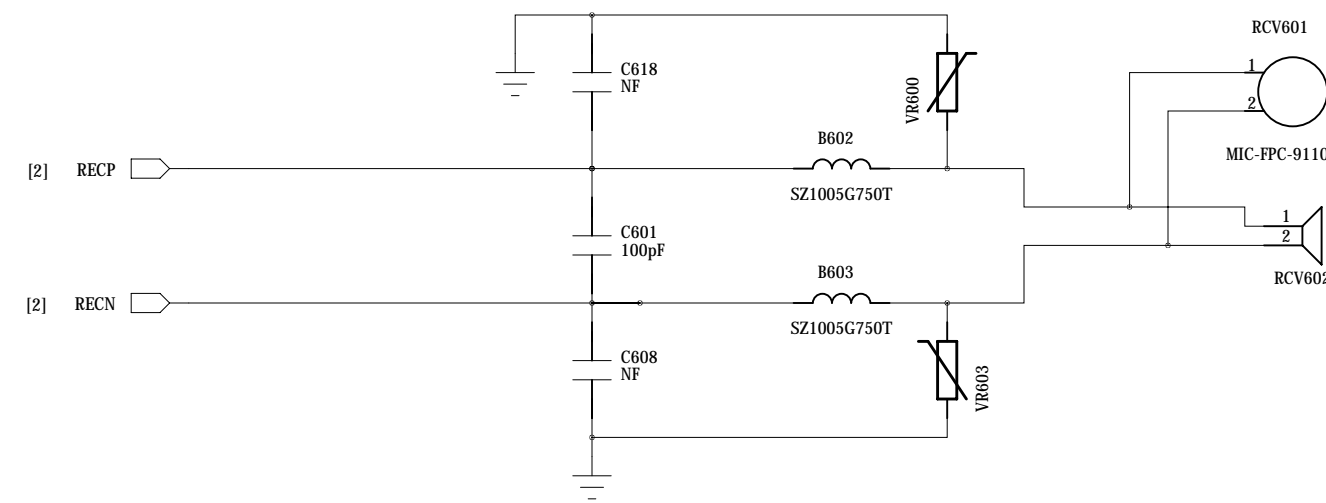
EAR-MIC



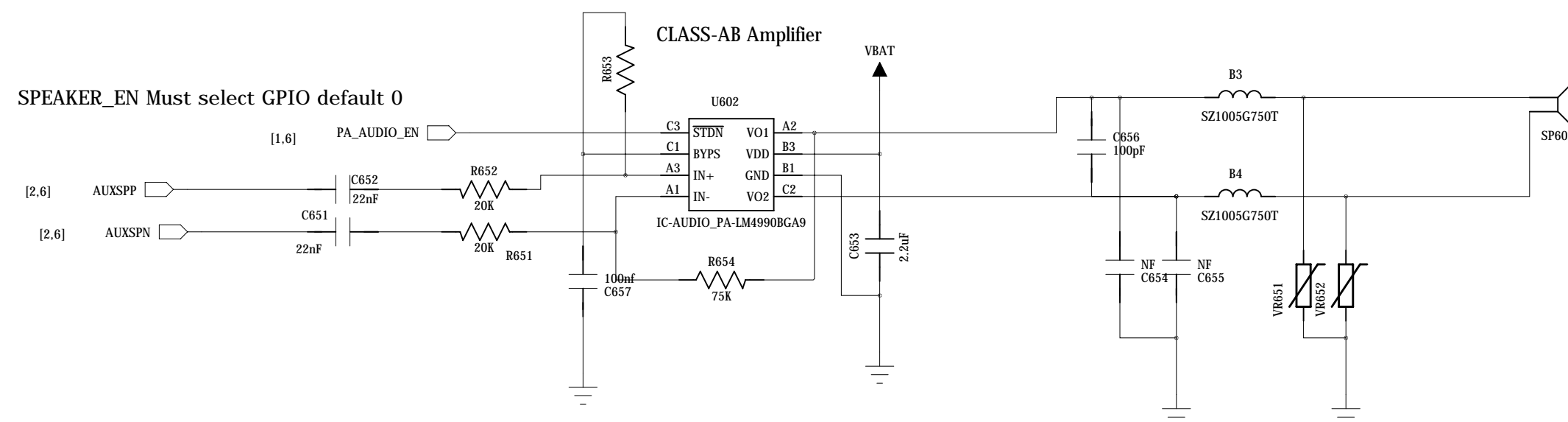
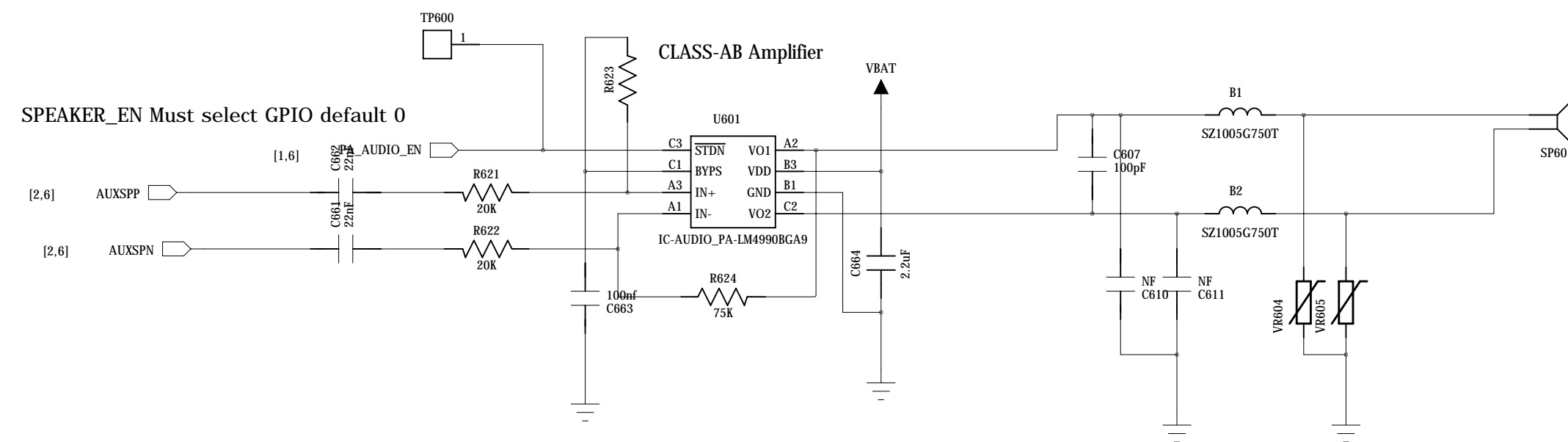
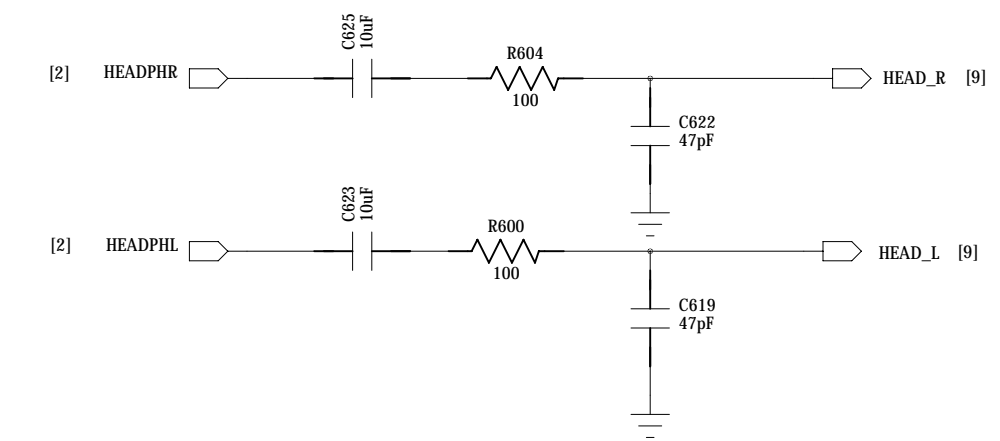
RECEIVER

Class AB

If use combined speaker and receiver ,then Analog switch are needed to prevent reverse current.Pls refer to <<SC6600H Speaker&Receiver Application Notes>>



HEADPHONE

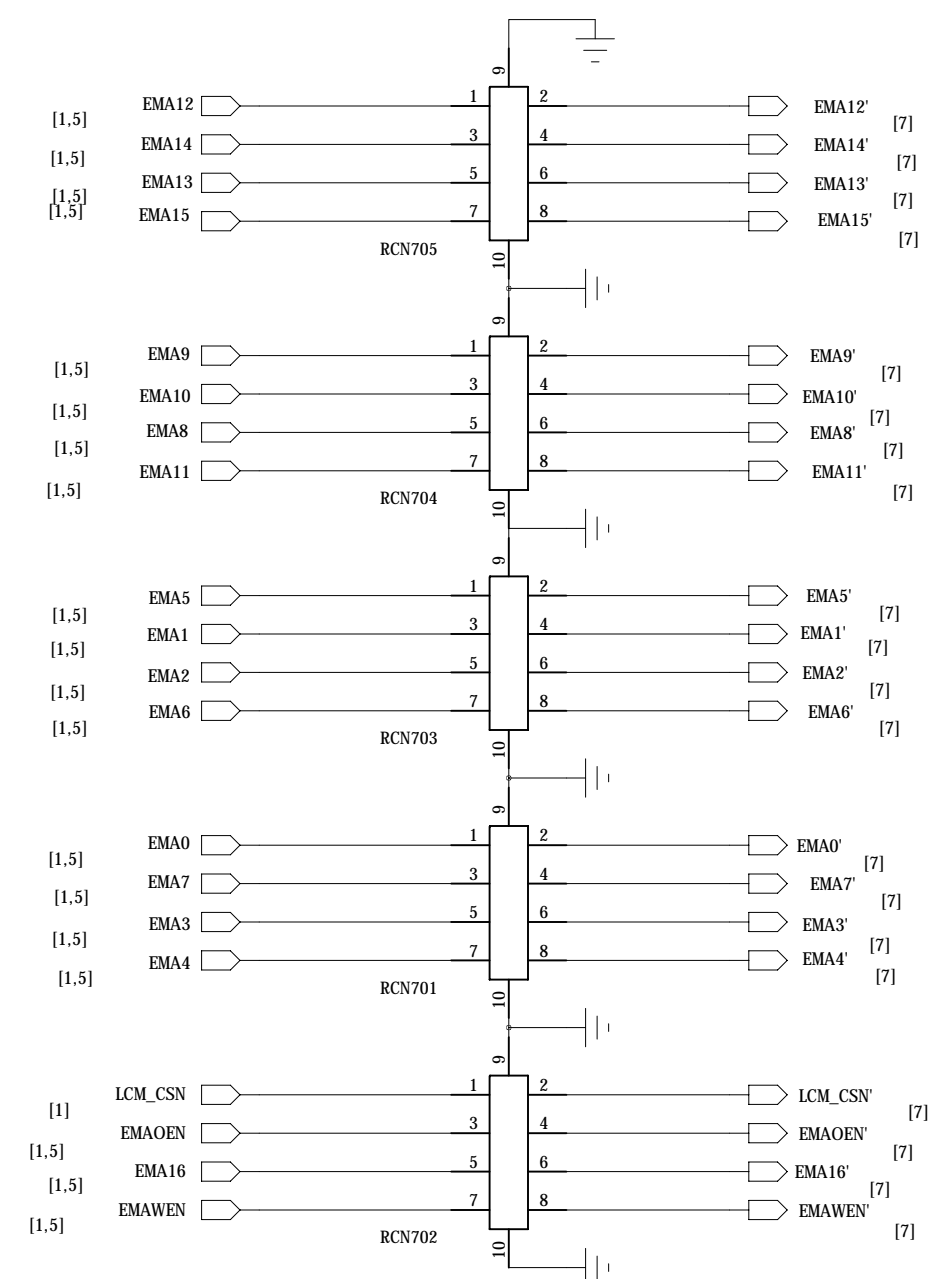
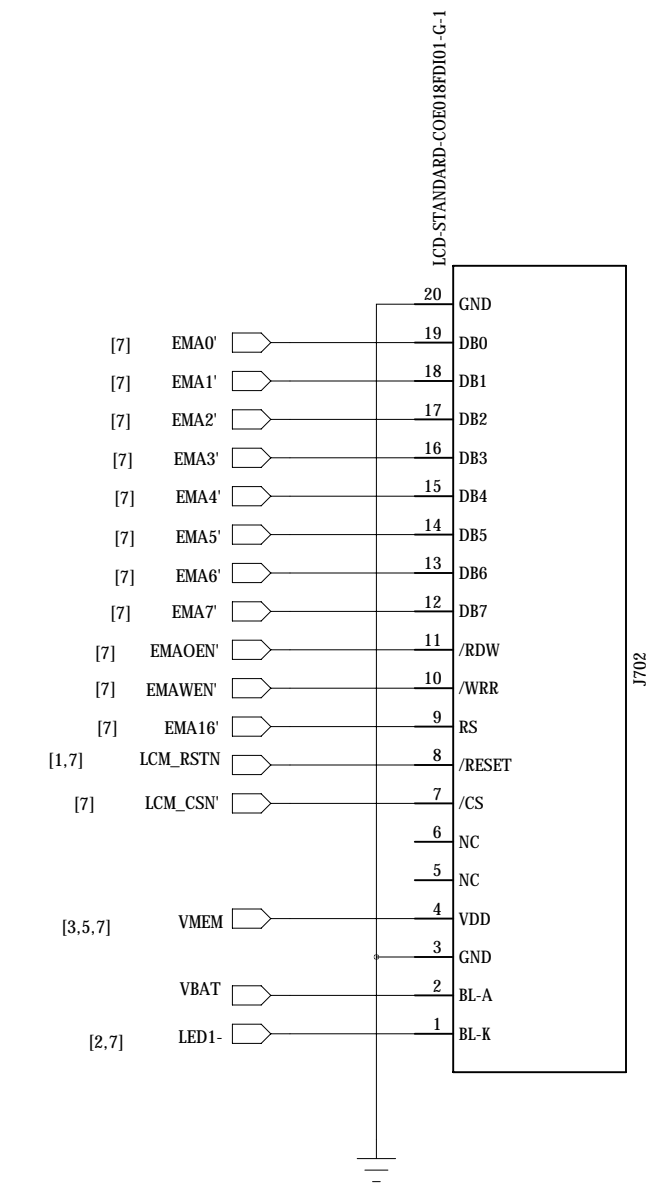
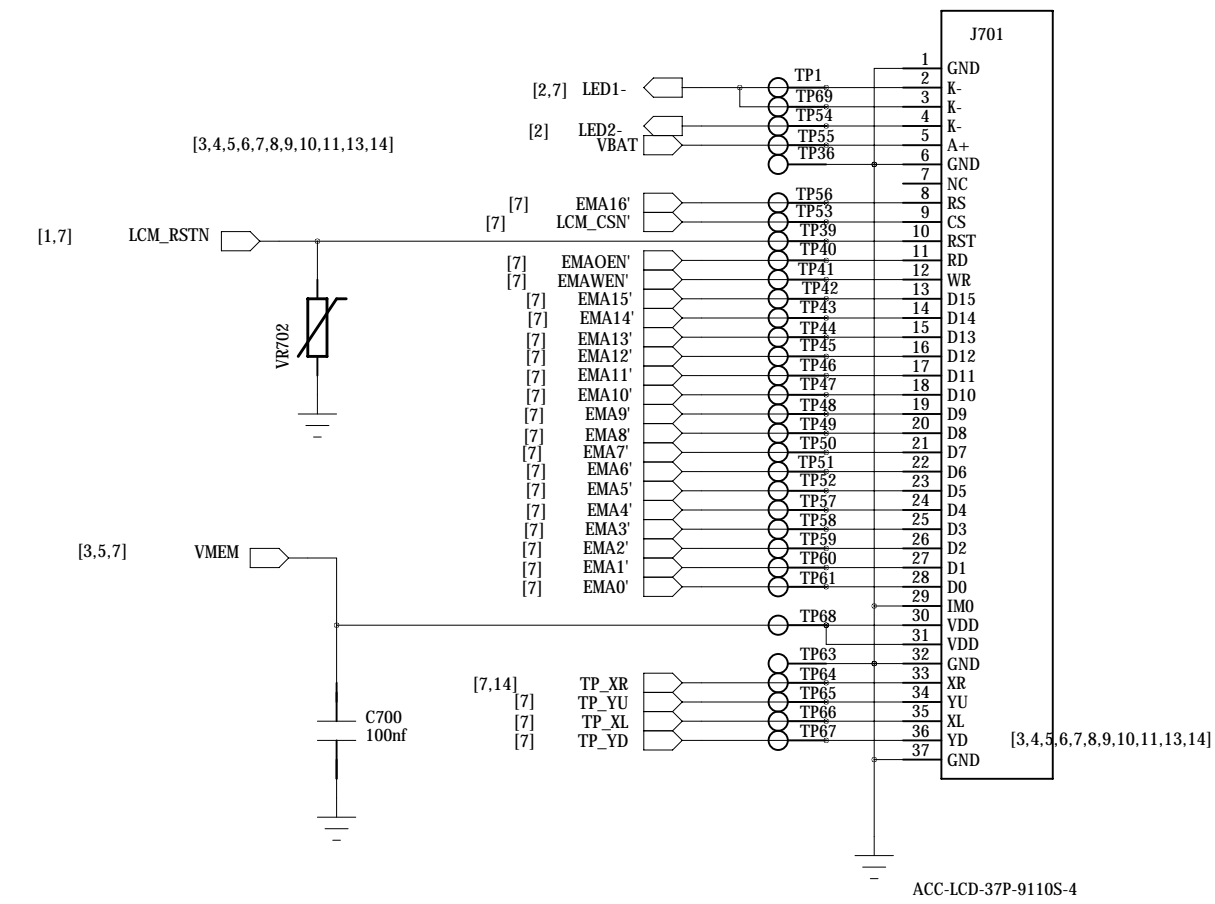
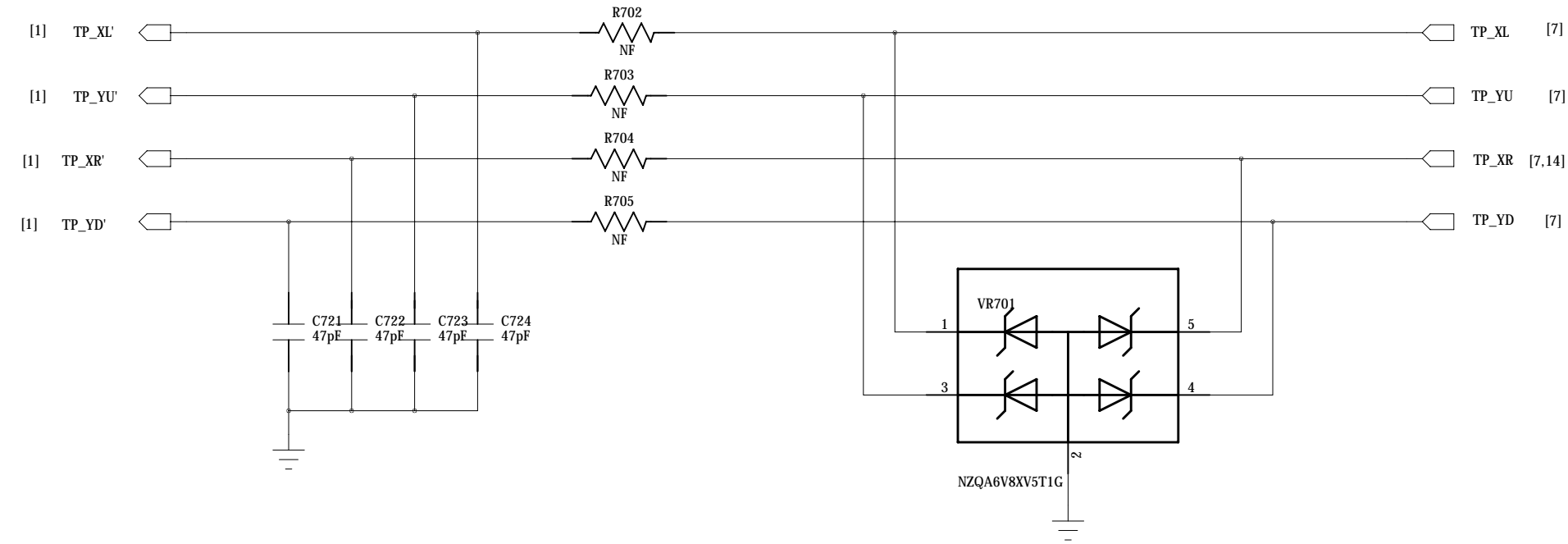


Freecom

Project#°	<project>	Design by#°	<Design>
Title#°	<title>	Check by#°	<check>
REV#°	<REV>	Approve#°	<appr>
File NO.#°	<file no>	sheet:	6 / 14

LCM_2.0/LCM_1.77

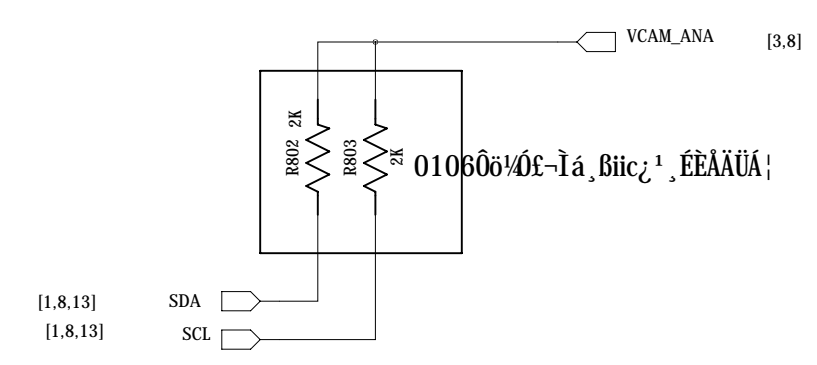
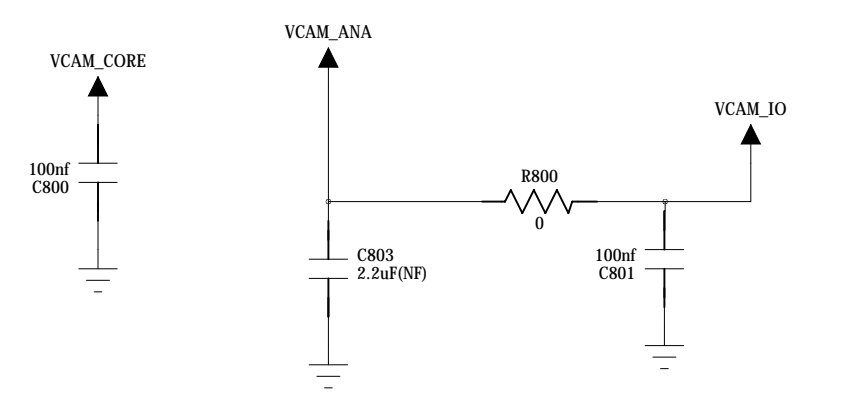
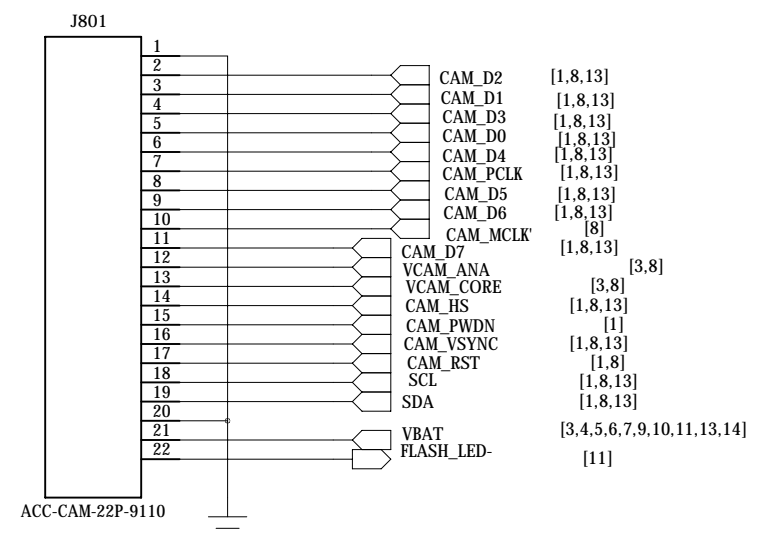
TP



Freecom		
Project#°	<project>	Design by#° <Design>
Title#°	<title>	Check by#° <check>
REV#°	<REV>	Approve#° <appr>
File NO.#°	<file no>	sheet: 7 / 14

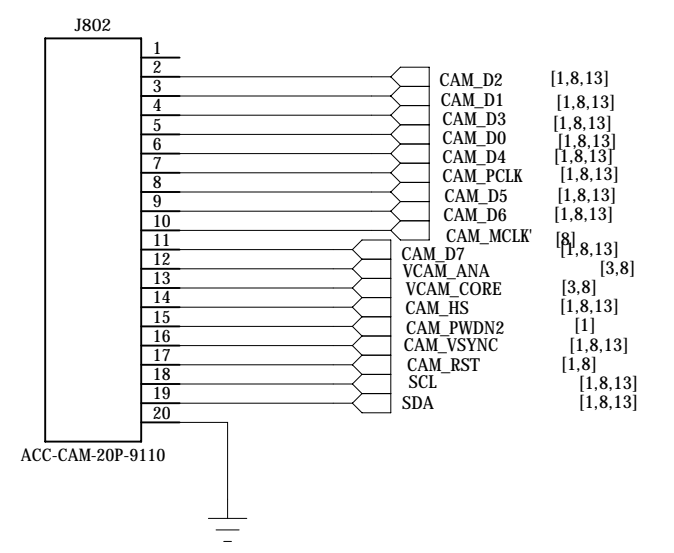
°6CAMERA

CAMERA1



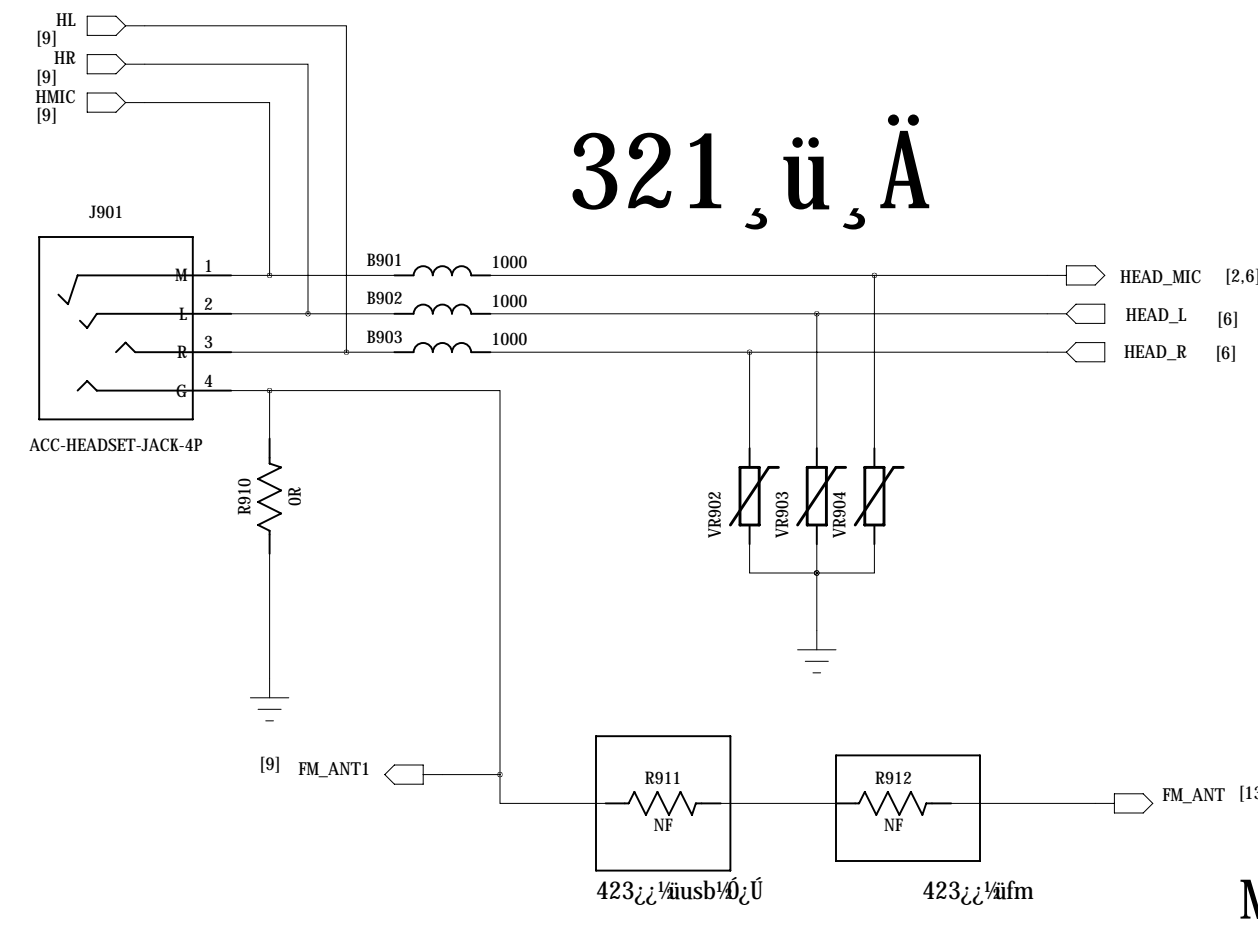
CAMERA2

Ç° camera

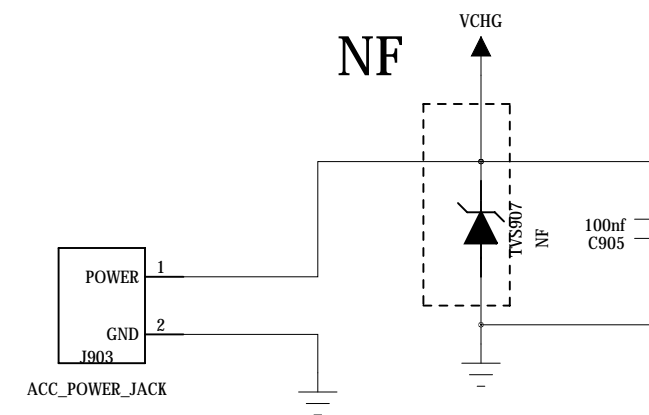


Freecom		
Project°	<project>	Design by° <Design>
Title°	<title>	Check by° <check>
REV°	<REV>	Approve° <appr>
File NO.f°	<file no>	sheet: 8 / 14

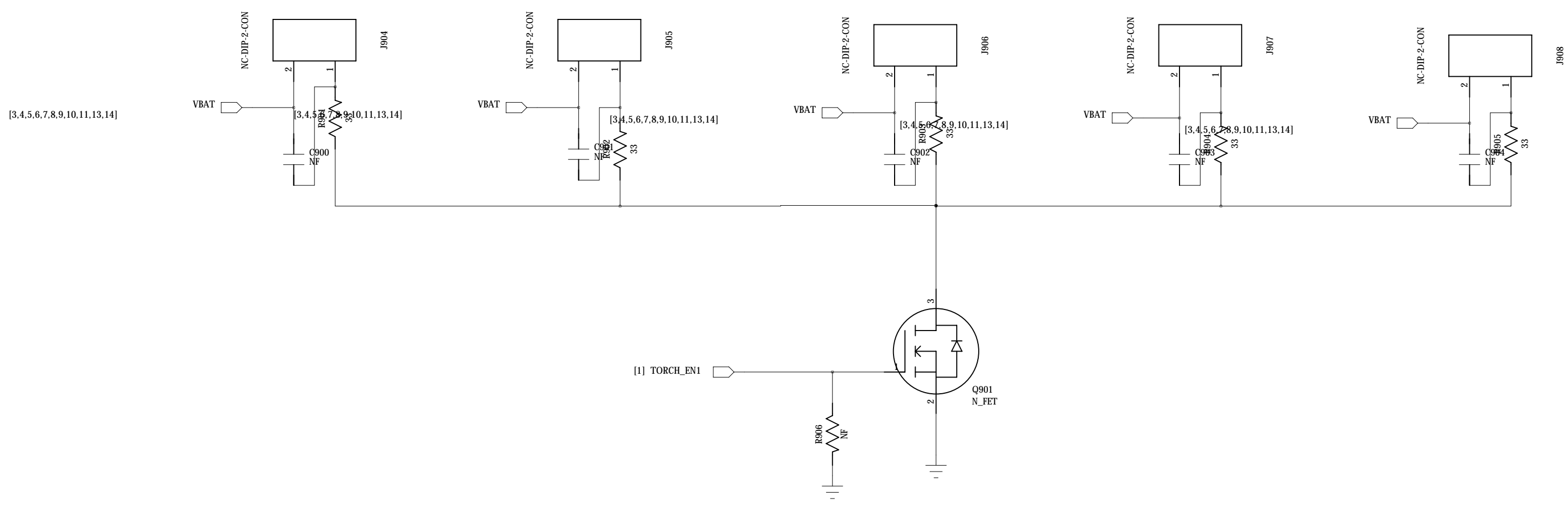
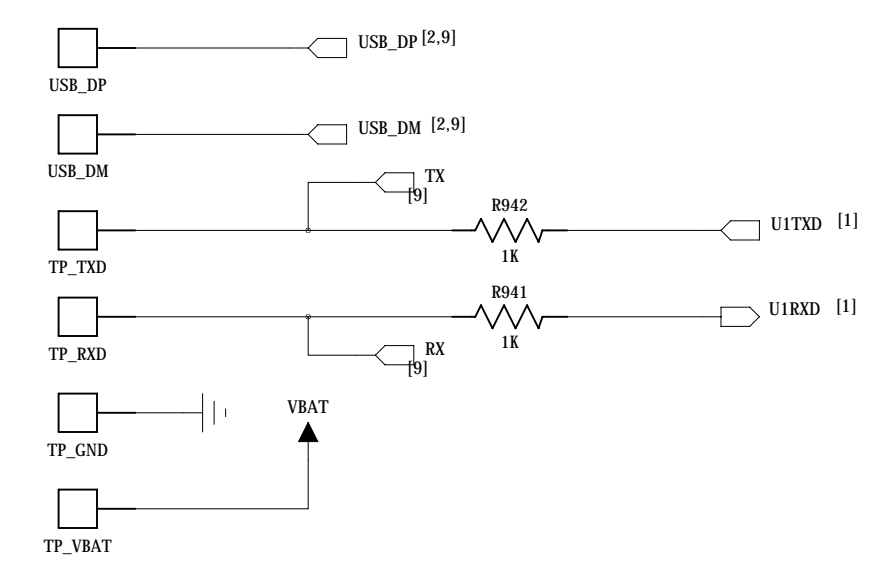
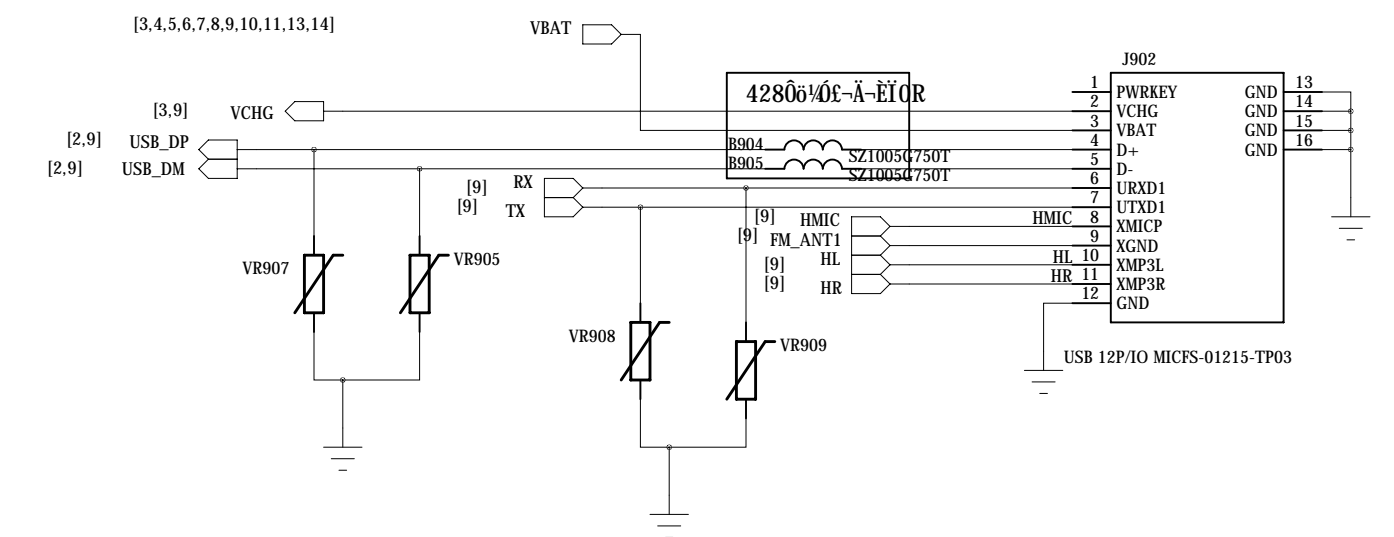
INTERFACE



MARK point

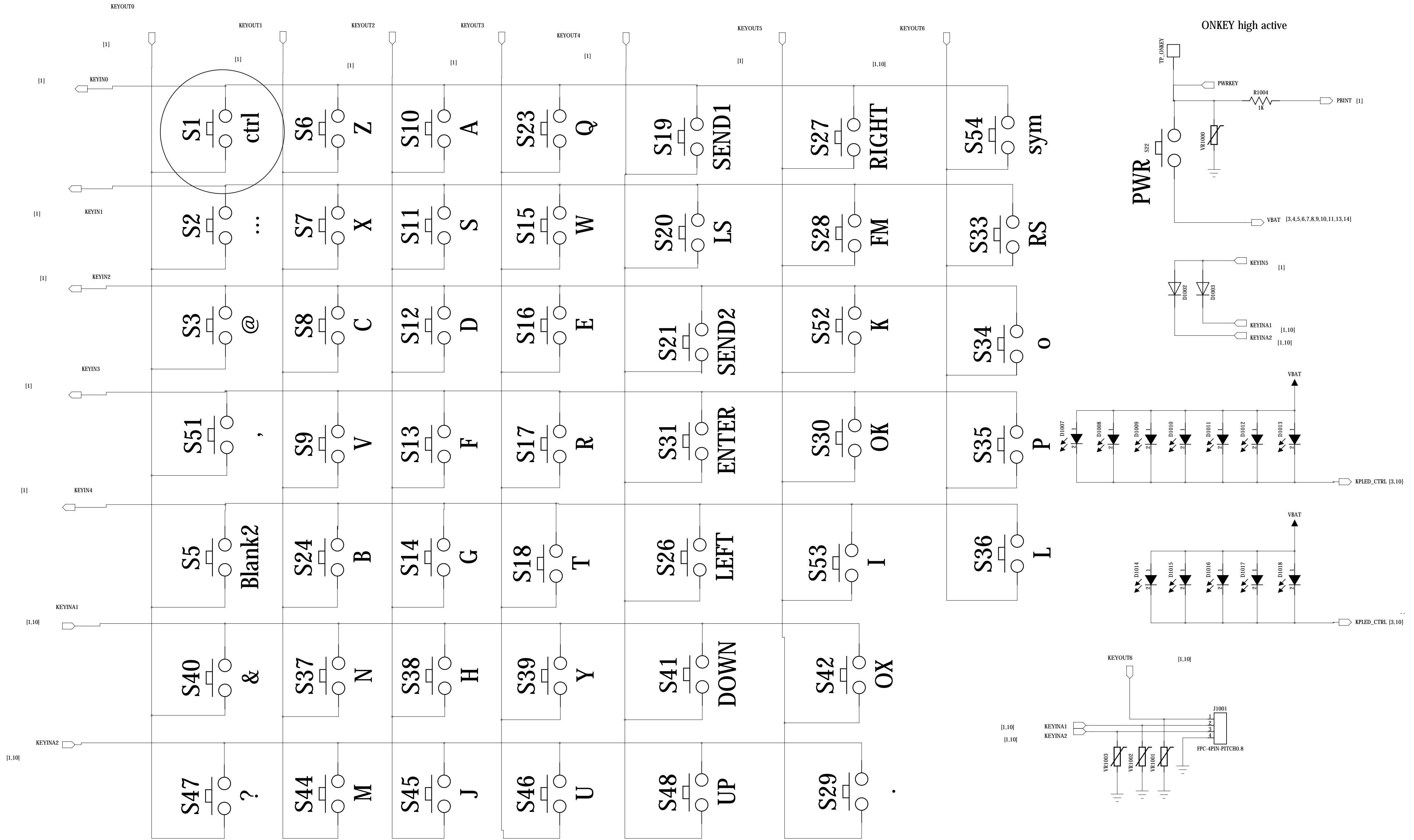


Boot select:
 UORSTN = low --> boot from USB
 UORSTN = high --> boot from NOR or UART
 NOTE: keyin0 & keyout0 pressed when power up will also lead to USB boot

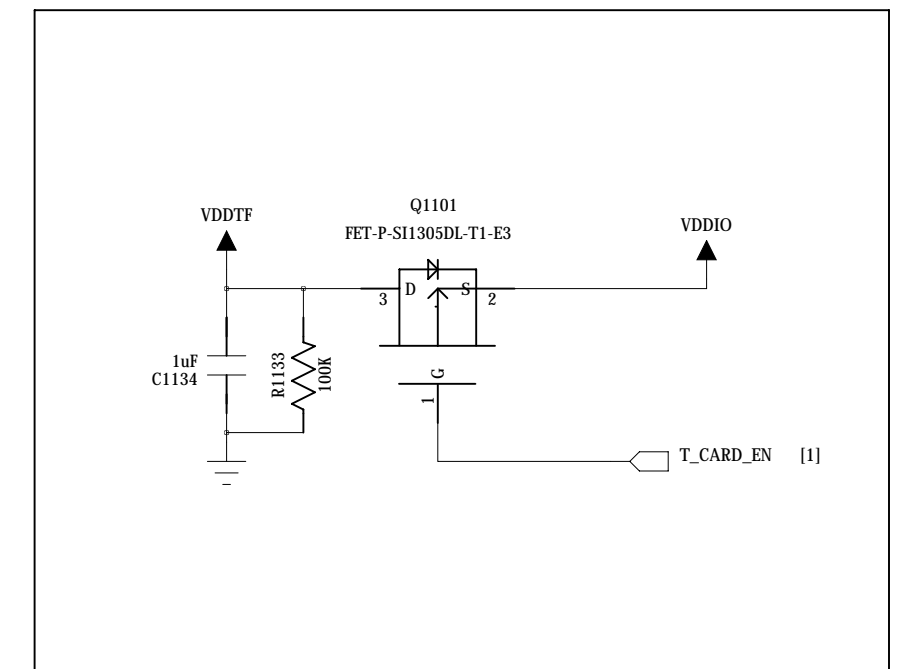
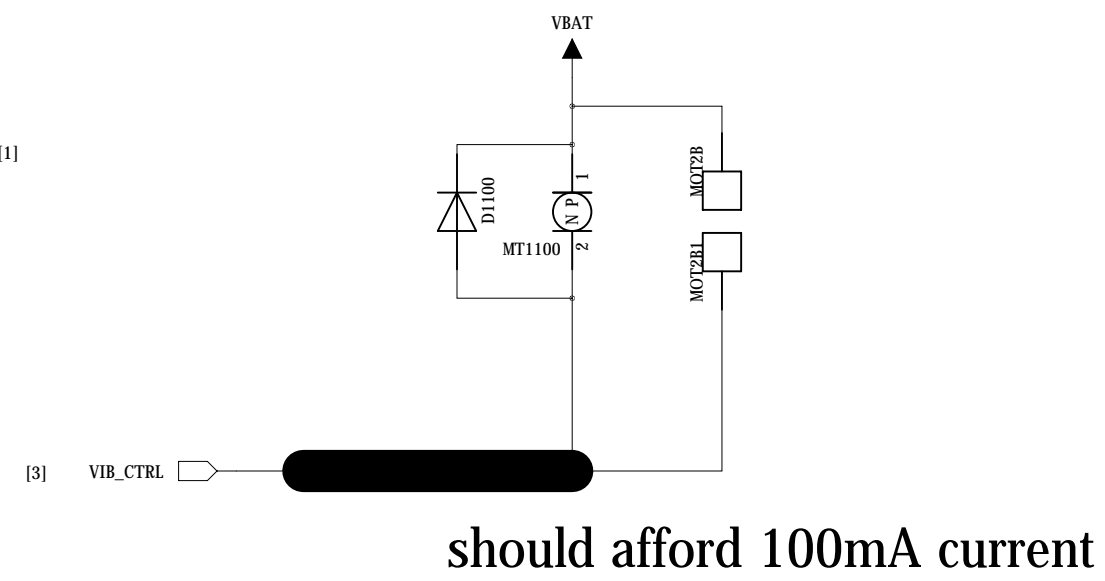
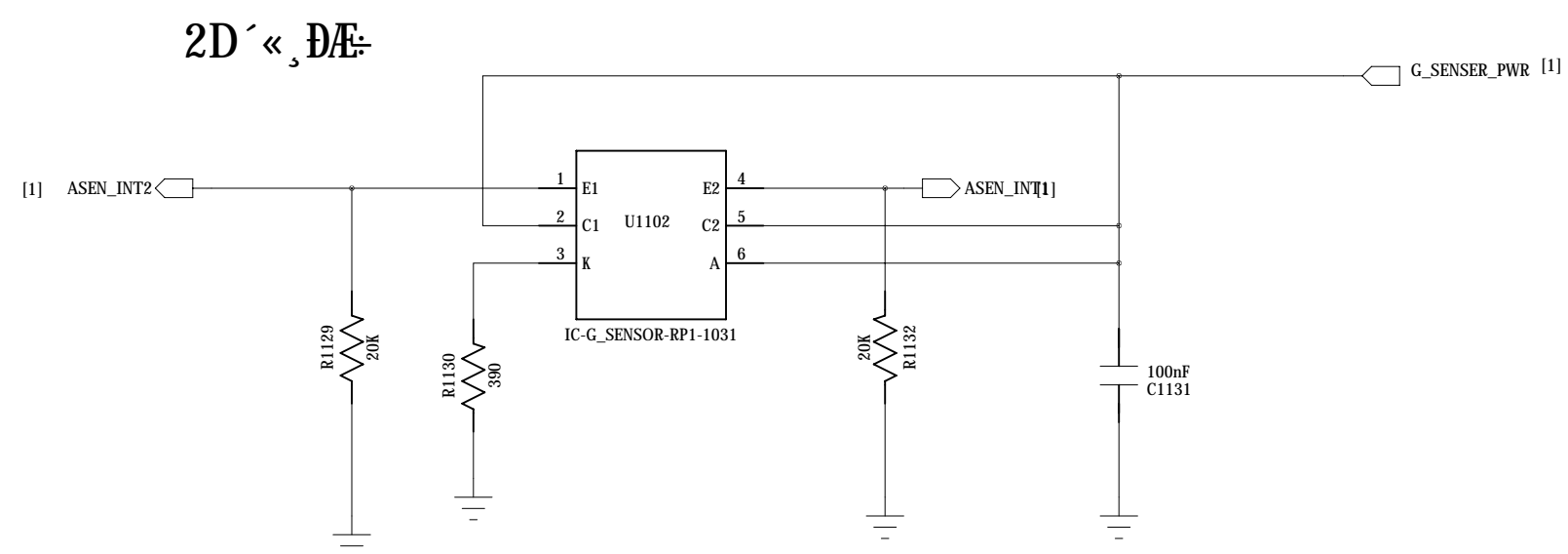


Freecom		
Project°	<project>	Design by° <Design>
Title°	<title>	Check by° <check>
REV°	<REV>	Approve° <appr>
File NO.°	<file no>	sheet: 9 / 14

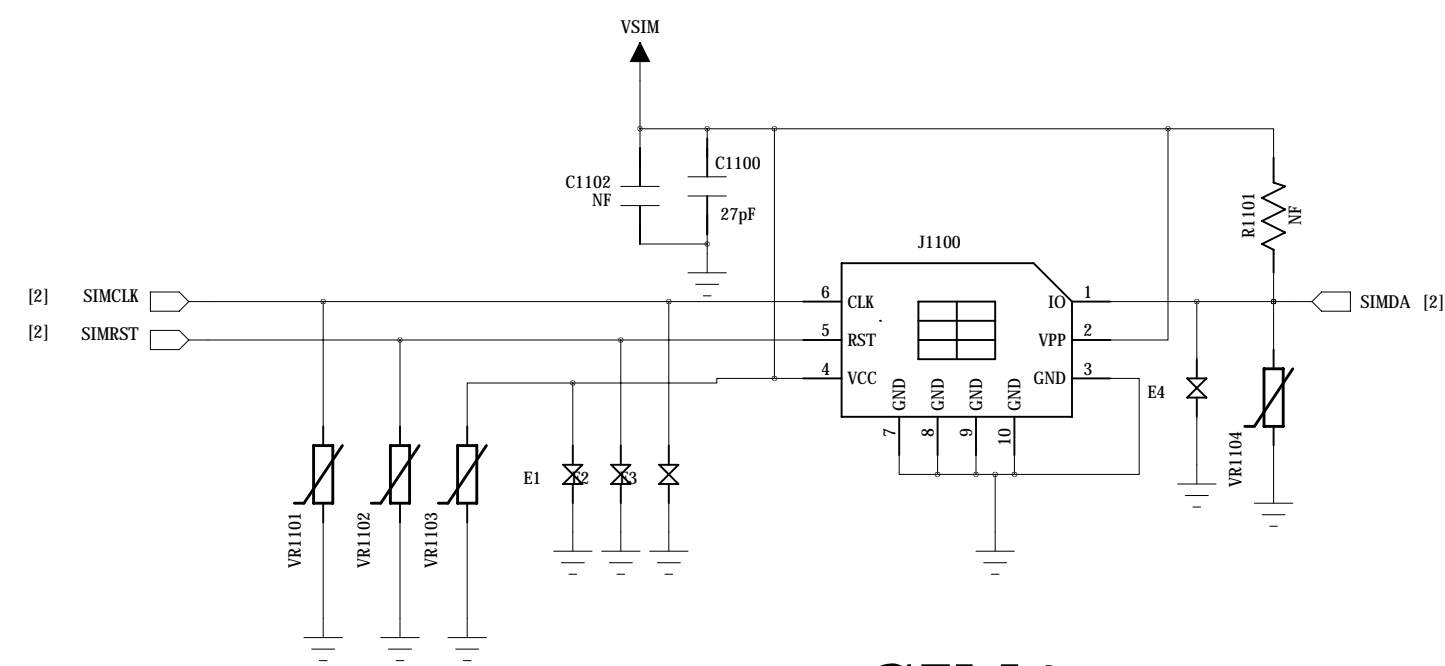
Press this button when power up will make the phone boot from USB



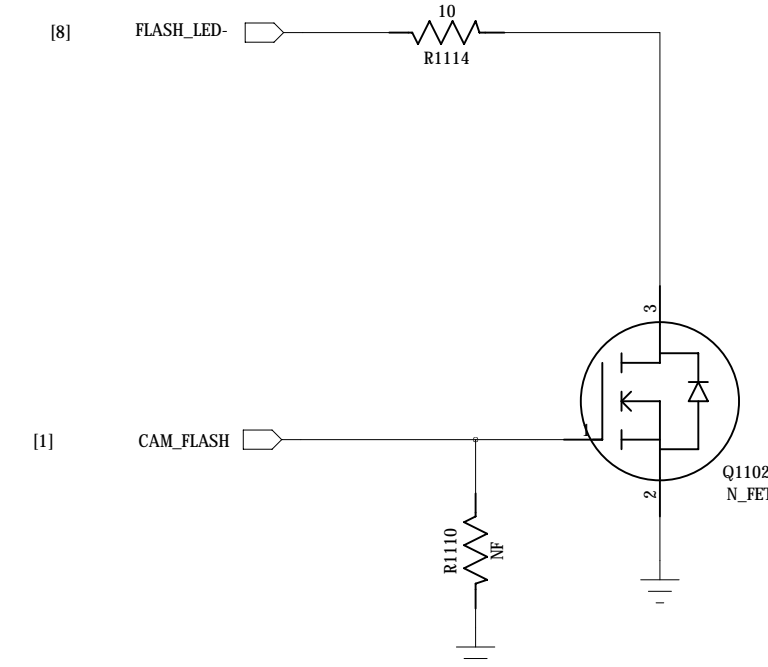
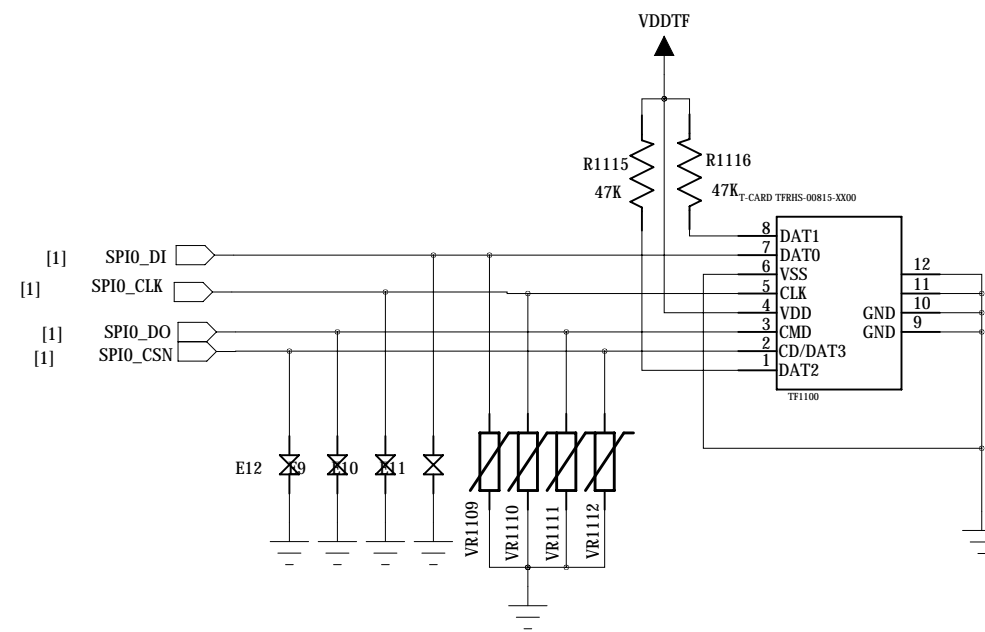
Freecom			
Project#°	<project>	Design by#°	<Design>
Title#°	<title>	Check by#°	<check>
REV#°	<REV>	Approve#°	<appr>
File NO.#°	<file no>	sheet:	10/ 14



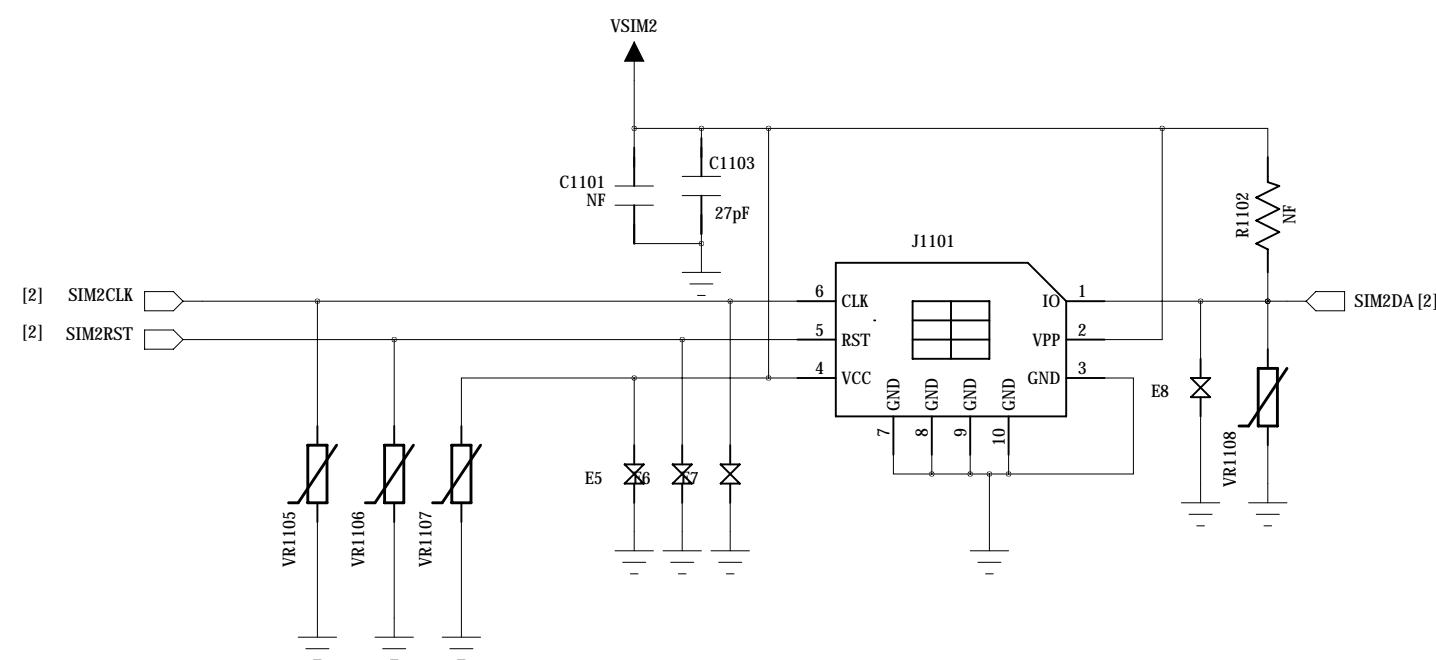
DSIM+TFD; °ä



SIM1



放在PCB侧边。



SIM1

Freecom	
Project#°	<project>
Title#°	<title>
REV#°	<REV>
File NO.#°	<file no>
Design by#°	<Design>
Check by#°	<check>
Approve#°	<appr>
sheet:	11/ 14