

Quick Reference Guide

LCU 5352SC1

Copyrights

The information in this document is subject to change at the sole discretion of ASSA ABLOY without notice.

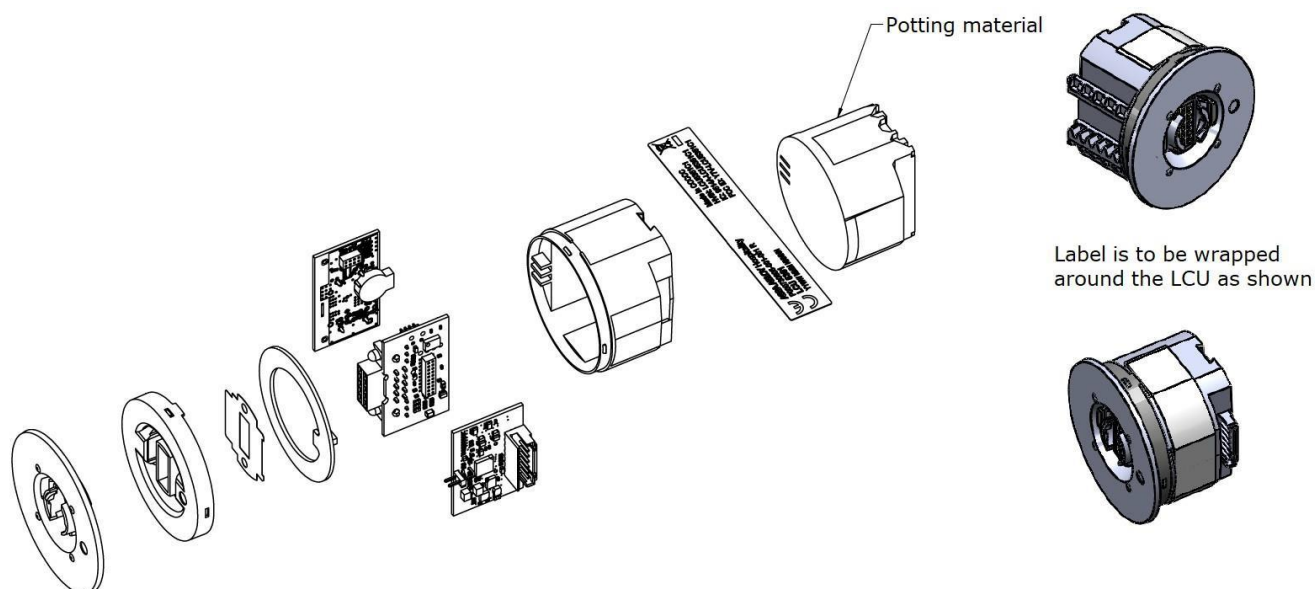
Any use, operation or repair in contravention of this document is at your own risk. ASSA ABLOY does not assume any responsibility for incidental or consequential damages arising from the use of this manual.

All information and drawings in this document are the property of ASSA ABLOY. Unauthorized use and reproduction is prohibited.

Table of contents

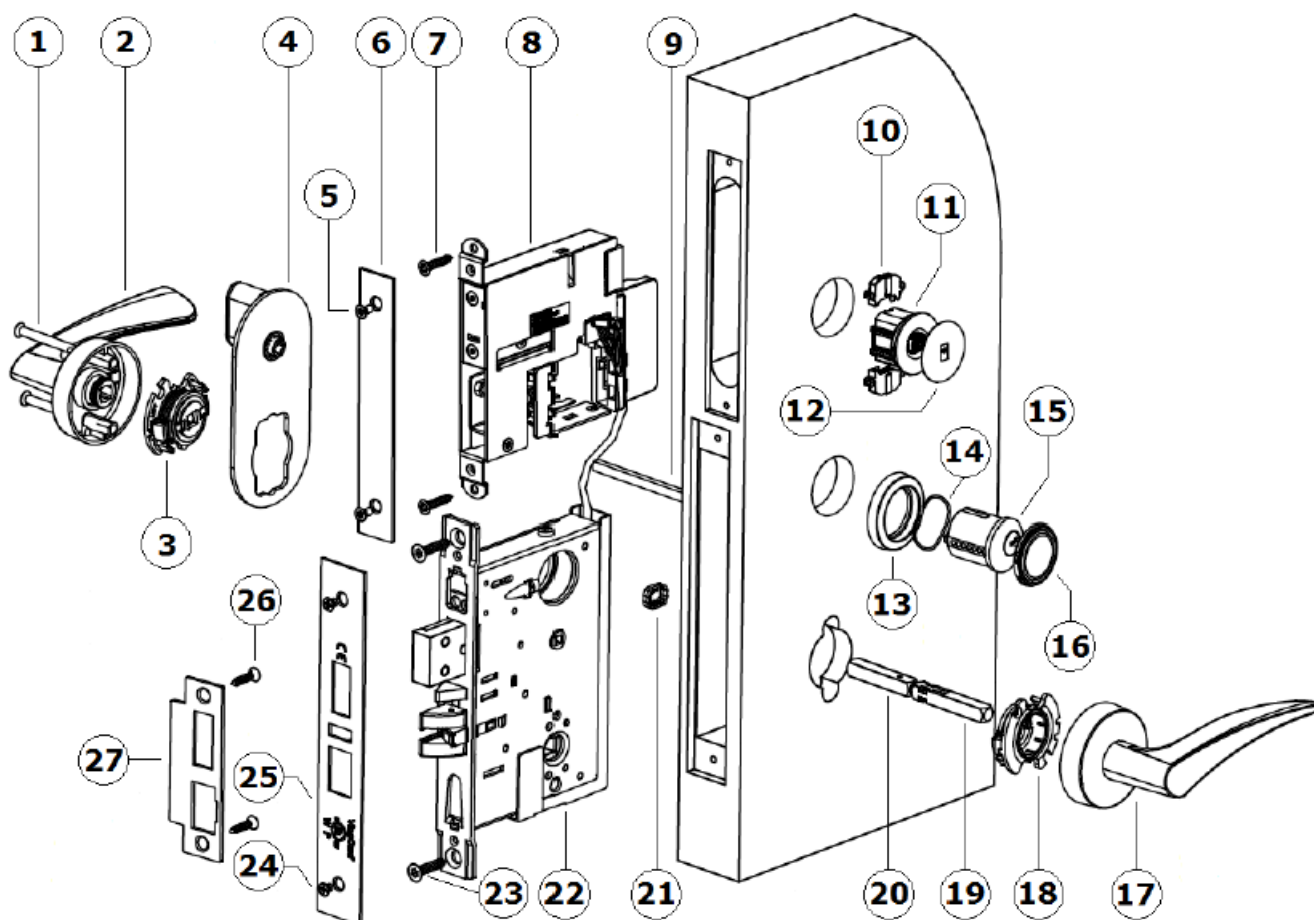
EXPLODED VIEW	3
INSTALLATION	3
FCC STATEMENTS	4
ISED (IC) STATEMENTS	4
REVISION HISTORY	5

Exploded view



Installation

LCU 5352SC1 is intended for limited use, i.e. for mounting in applicable ASSA ABLOY Global Solutions products only. See below a mounting example in a *VingCard Essence (v2)* lock, ANSI (DA) variant with cylinder, where LCU 5352SC1 is position 11. For additional mounting details, see the respective user manual for the concerned product.



FCC statements

This device complies with Part 15 of the FCC Rules. Operation is subject to the following two conditions:

- (1) this device may not cause harmful interference, and
- (2) this device must accept any interference received, including interference that may cause undesired operation.

Exposure statement:

This portable device with its antenna complies with FCC RF exposure limits for general population/uncontrolled exposure. The antenna used for this device must not be co-located or operating in conjunction with any other antenna or transmitter. Use only the supplied antenna.

This equipment complies with FCC radiation exposure limits set forth for an uncontrolled environment. This transmitter must not be co-located or operating in conjunction with any other antennas or transmitters. Changes or modifications not expressly approved by the party responsible for compliance could void the user's authority to operate the equipment.

Note: This equipment has been tested and found to comply with the limits for a Class B digital device, pursuant to part 15 of the FCC Rules. These limits are designed to provide reasonable protection against harmful interference in a residential installation. This equipment generates, uses and can radiate radio frequency energy and, if not installed and used in accordance with the instructions, may cause harmful interference to radio communications. However, there is no guarantee that interference will not occur in a particular installation. If this equipment does cause harmful interference to radio or television reception, which can be determined by turning the equipment off and on, the user is encouraged to try to correct the interference by one or more of the following measures:

- Reorient or relocate the receiving antenna.
- Increase the separation between the equipment and receiver.
- Connect the equipment into an outlet on a circuit different from that to which the receiver is connected.
- Consult the dealer or an experienced radio/TV technician for help.

The concerned LCU must be labeled to say '**FCC ID: Y7V-LCU5352SC1**'.

The concerned end product must be labeled to say '**Contains FCC ID: Y7V-LCU5352SC1**'.

ISED (IC) statements

This device complies with Industry Canada licence-exempt RSS standard CAN ICES-3 (B)/ NMB-3(B) B. Operation is subject to the following two conditions:

- (1) this device may not cause interference, and
- (2) this device must accept any interference, including interference that may cause undesired operation of the device.

Le présent appareil est conform aux CNR d'Industrie Canada applicables aux appareils radio exempts de licence. L'exploitation est autorisée aux deux conditions suivantes:

- (1) l'appareil ne doit pas produire de brouillage, et
- (2) l'utilisateur de l'appareil doit accepter tout brouillage radioélectrique subi, même si le brouillage est susceptible d'en compromettre le fonctionnement.

Exposure statement:

This portable device with its antenna complies with FCC RF exposure limits for general population/ uncontrolled exposure. The antenna used for this device must not be co-located or operating in conjunction with any other antenna or transmitter. Use only the supplied antenna.

Under Industry Canada regulations, this radio transmitter may only operate using an antenna of a type and maximum (or lesser) gain approved for the transmitter by Industry Canada. To reduce potential radio interference to other users, the antenna type and its gain should be so chosen that the equivalent isotropically radiated power (e.i.r.p.) is not more than that necessary for successful communication.

This radio transmitter **IC9514A-LCU5352SC1** has been approved by Industry Canada to operate with the antenna type listed below with the indicated maximum permissible gain and required antenna impedance. Antenna types not included in this list, having a gain greater than the maximum gain indicated for that type, are strictly prohibited for use with this device.

Name/Model	Gain	Impedance
Chip antenna	-0.5 dBi	50 ohm

The term "IC" before the equipment certification number only signifies that the Industry Canada technical specifications were met.

Le terme "IC" devant le numéro de certification signifie seulement que les spécifications techniques Industrie Canada ont été respectées.

The concerned LCU must be labeled to say '**IC9514A-LCU5352SC1**'.

The concerned end product must be labeled to say '**Contains IC9514A-LCU5352SC1**'.

Revision history

Date	Change	By
January 22, 2019	<ul style="list-style-type: none">Initial release	KG
October 29, 2019	<ul style="list-style-type: none">Clarified that <i>LCU 5352SC1</i> is intended for limited use, i.e. for mounting in applicable ASSA ABLOY Global Solutions products onlyAdded mounting example	KG
November 6, 2019	<ul style="list-style-type: none">Added 'The concerned end product must be labeled to say...' for FCC and ISED respectively	KG

ASSA ABLOY is the global leader in door opening solutions, dedicated to satisfying end user needs for security, safety and convenience.

ASSA ABLOY
Global Solutions

ASSA ABLOY Global Solutions APAC
apac.globalsolutions@assaabloy.com
Phone: +65 6305 76 70

ASSA ABLOY Global Solutions EMEA
emea.globalsolutions@assaabloy.com
Phone: +47 69 25 50 00

ASSA ABLOY Global Solutions North America
nam.globalsolutions@assaabloy.com
Phone: +1 972 907 2273

ASSA ABLOY Global Solutions Latin America
lam.globalsolutions@assaabloy.com
Phone: +52 55 36 40 12 00

assaabloyglobalsolutions.com