

## L7 Entry

### Multi Media radio with Infineon Bluetooth Module on Main Board

**HW-Version**      **C3**
**BT module-Version**      **V2.01**

#### Released by

Role	Name	Department	Date	Location	Signature or E-Sign-ID
EE-Developer	Frank Born	I IC RD G HW D2	04-Nov-2010	WTZ	

#### Reviewed by (see Review Log, P730006FFF)

Role	Name	Department	Date	Location
EE Group Leader		I IC RD G HW D2	-	WTZ
EE-Architect	Thomas Volk	I IC RD G HW AS	-	WTZ
EE-DPL	Gunnar Plüschke	I IC RD G HW PM	-	WTZ

#### Members of CCB

Role	Name	Department	Location

#### History of Content Changes

Version	Status	Date dd-Mmm-YYYY	Document Owner, Department	Changed by: Changes / Requested by <small>(e.g. CR-number)</small>
a01	[draft]	28-Oct-2010	Frank Born, I IC RD G HW D2	First draft
a01	[released]	04-Nov-2010	Frank Born, I IC RD G HW D2	
a02	[released]	01-Dec-2010	Frank Born, I IC RD G HW D2	Document update
a03	[released]	14-Feb-2011	Frank Born, I IC RD G HW D2	Add picture with removed Bluetooth shielding
a04	[released]	28-Feb-2011	Frank Born, I IC RD G HW D2	Picture update with removed PCB mounting bracket

## **Table of contents**

6		
7	<b>1 SUMMARY .....</b>	<b>3</b>
8	1.1 INTRODUCTION.....	3
9	1.2 SYSTEM DESCRIPTION .....	3
10	<b>2 SYSTEM OVERVIEW.....</b>	<b>4</b>
11		
12		

Transmittal, reproduction, dissemination and/or editing of this document as well as utilization of its contents and communication thereof to others without express authorization are prohibited. Offenders will be held liable for payment of damages. All rights created by patent grant or registration of a utility model or design patent are reserved.

# 1 Summary

## 1.1 Introduction

This document shows an overview of the L7 Entry system with the internal PCB's.

The L7 Entry is a multi media radio for the customer BMW with an on board Bluetooth module from Infineon which support the Bluetooth version V2.1+EDR with a data rate up to 3Mbit/s in EDR mode.

## 1.2 System description

The Bluetooth module in the L7 Entry system is implement for audio and data connections with mobile devices like mobile phones.

The basic function of the L7 Entry Bluetooth system is the hands free functionality in combination with the car internal loudspeaker and microphone.

The following picture shows the L7 Entry hardware with the housing:



Figure1: L7 Entry, front top view

## 2 System overview

The following pictures show the L7 Entry system disassembled down to the Main PCB.

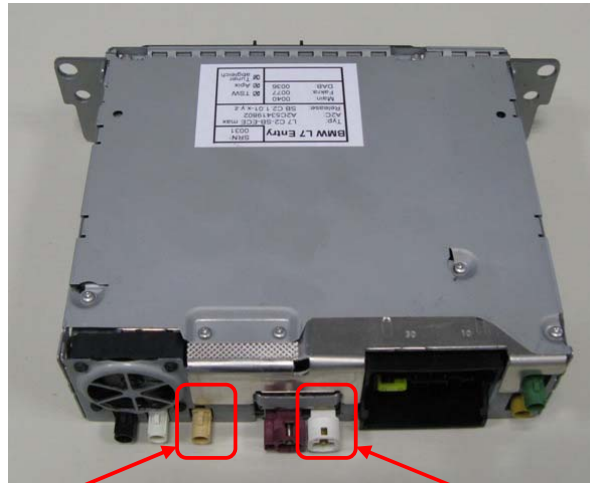


Figure2: L7 Entry backside view

Bluetooth RF  
connector

USB  
connector



Figure3: top bracket removed, CD drive visible

60



Figure4: CD drive and front bracket removed

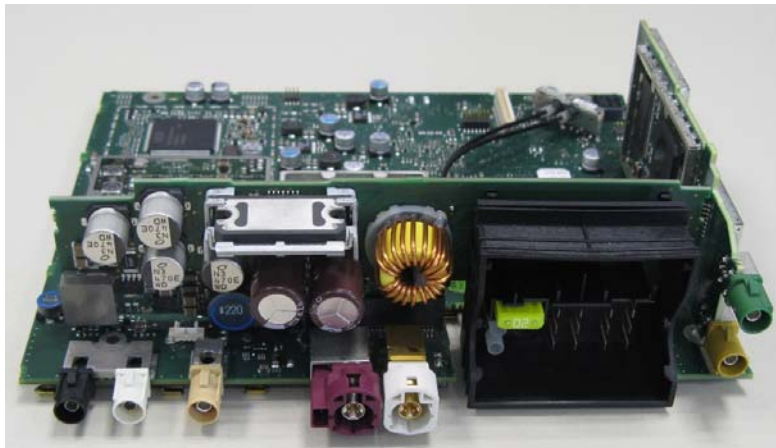


Figure5: rear side view without housing



Figure6: top view without housing

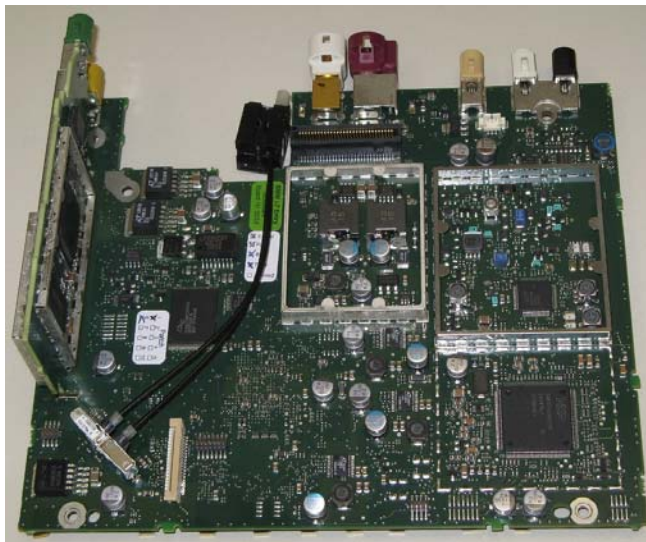


Figure7: Main PCB top view

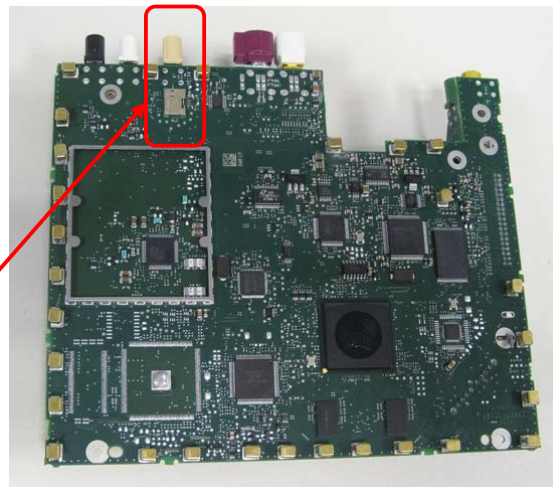
Transmittal, reproduction, dissemination and/or editing of this document as well as utilization of its contents and communication thereof to others without express authorization are prohibited. Offenders will be held liable for payment of damages. All rights created by patent grant or registration of a utility model or design patent are reserved.



93



Figure8: Main PCB top side view



Bluetooth module  
with RF connector

Figure9: Main PCB bottom view

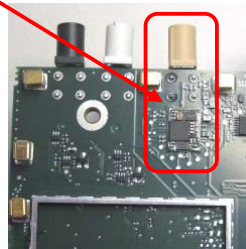


Figure10: Main PCB bottom view, detail picture of Bluetooth module without shielding