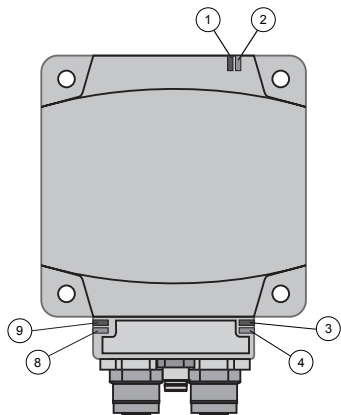


Diagnostic LEDs / Voyants de diagnostic / LED de diagnóstico

en



LED	Name	LED state	Description	Smart antenna state
1	TAG	Solid Green	Tag presence	A tag is detected – dialog ok
		1 flash	No tag detected	Waiting for a tag
		Red flashes	RFID errors	Errors detected in the dialog with the tag
2	COM	Green flashes	Requests received from a client	OK
		Red flashes	Errors in requests received from a client	Error code returned to the client (no tag / bad parameters,...)
3	NS (Network status)	Solid Green	The network is operating normally	OK
		4 flashes	A duplicate IP condition exists	The smart antenna operates offline
		5 flashes	The smart antenna attempts to get an IP configuration from BootP server	The smart antenna sends BOOTP/DHCP requests to a BootP server and awaits a reply
		6 flashes	Operations are normal with default IP addressing settings	BootP requests timed out. The Smart antenna applied the default Ip address (192.168.0.10)
4 8	Link Activity (port 1 & 2)	Solid Green	Ethernet link present at 100 Mbps	OK
		Flashing Green	Traffic at 100 Mbps	OK
		Solid Yellow	Ethernet link present at 10 Mbps	OK
		Flashing Yellow	Traffic at 10 Mbps	OK
9	MS (Ethernet module)	Green	On	OK
		Off	Off	No power supply Not ready

fr

LED	Name	LED state	Description	Smart antenna state
1	TAG	Solid Green	Tag presence	A tag is detected – dialog ok
		1 flash	No tag detected	Waiting for a tag
		Red flashes	RFID errors	Errors detected in the dialog with the tag
2	COM	Green flashes	Requests received from a client	OK
		Red flashes	Errors in requests received from a client	Error code returned to the client (no tag / bad parameters,...)
3	NS (Network status)	Solid Green	The network is operating normally	OK
		4 flashes	A duplicate IP condition exists	The smart antenna operates offline
		5 flashes	The smart antenna attempts to get an IP configuration from BootP server	The smart antenna sends BOOTP/DHCP requests to a BootP server and awaits a reply
		6 flashes	Operations are normal with default IP addressing settings	BootP requests timed out. The Smart antenna applied the default Ip address (192.168.0.10)
4 8	Link Activity (port 1 & 2)	Solid Green	Ethernet link present at 100 Mbps	OK
		Flashing Green	Traffic at 100 Mbps	OK
		Solid Yellow	Ethernet link present at 10 Mbps	OK
		Flashing Yellow	Traffic at 10 Mbps	OK
9	MS (Ethernet module)	Green	On	OK
		Off	Off	No power supply Not ready

es

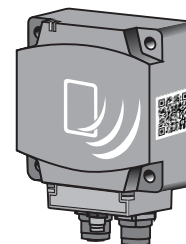
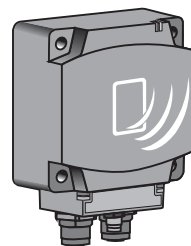
LED	Name	LED state	Description	Smart antenna state
1	TAG	Solid Green	Tag presence	A tag is detected – dialog ok
		1 flash	No tag detected	Waiting for a tag
		Red flashes	RFID errors	Errors detected in the dialog with the tag
2	COM	Green flashes	Requests received from a client	OK
		Red flashes	Errors in requests received from a client	Error code returned to the client (no tag / bad parameters,...)
3	NS (Network status)	Solid Green	The network is operating normally	OK
		4 flashes	A duplicate IP condition exists	The smart antenna operates offline
		5 flashes	The smart antenna attempts to get an IP configuration from BootP server	The smart antenna sends BOOTP/DHCP requests to a BootP server and awaits a reply
		6 flashes	Operations are normal with default IP addressing settings	BootP requests timed out. The Smart antenna applied the default Ip address (192.168.0.10)
4 8	Link Activity (port 1 & 2)	Solid Green	Ethernet link present at 100 Mbps	OK
		Flashing Green	Traffic at 100 Mbps	OK
		Solid Yellow	Ethernet link present at 10 Mbps	OK
		Flashing Yellow	Traffic at 10 Mbps	OK
9	MS (Ethernet module)	Green	On	OK
		Off	Off	No power supply Not ready

Note: The user guide (N° EIO0000001601) and EDS file are stored in the internal memory and are accessible from the Web server of the XGCS850C201 Smart Antenna (page "Documentation"). These documents are also accessible on Web site "www.tesensors.com".

Note : le manuel utilisateur (n° EIO0000001602) et le fichier EDS sont stockés dans la mémoire interne et sont accessibles à partir du serveur Web de la Smart Antenna XGCS850C201 (page "Documentation"). Ces documents se trouvent également sur le site Web "www.tesensors.com".

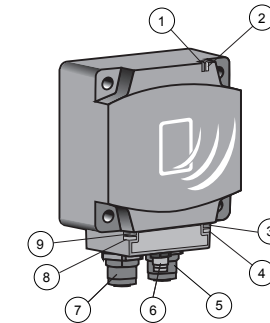
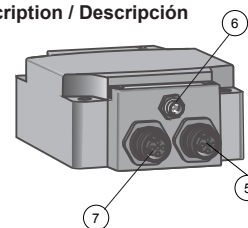
Nota: La guía del usuario (N°EIO0000001603) y el archivo EDS están almacenados en la memoria interna y se puede acceder a ellos desde el servidor Web de la Smart Antenna XGCS850C201 (página "Documentation") (Documentación). También se puede acceder a estos documentos en el sitio web "www.tesensors.com".

en EtherNet/IP Smart Antenna
fr EtherNet/IP Smart Antenna
es EtherNet/IP Smart Antenna



- Link to the user guide and EDS file
- Lien vers le guide d'utilisation et le fichier EDS
- Enlace a la Guía del usuario y el archivo EDS

Description / Description / Descripción



en

1	TAG : Tag LED
2	COM : Communication LED
3	NS : NetworkStatusLED
4	LK/SP : Ethernet communication port Nr.1 LED
5	M12 socket Ethernet port Nr 1
6	M8 Socket Power supply 24V
7	M12 socket Ethernet port Nr 2
8	LK/SP : Ethernet communication port Nr.2 LED
9	MS : Ethernet Module Status LED Setting

fr

1	TAG : Tag LED
2	COM : Communication LED
3	NS : NetworkStatusLED
4	LK/SP : Ethernet communication port Nr.1 LED
5	M12 socket Ethernet port Nr 1
6	M8 Socket Power supply 24V
7	M12 socket Ethernet port Nr 2
8	LK/SP : Ethernet communication port Nr.2 LED
9	MS : Ethernet Module Status LED Setting

es

1	TAG : Tag LED
2	COM : Communication LED
3	NS : NetworkStatusLED
4	LK/SP : Ethernet communication port Nr.1 LED
5	M12 socket Ethernet port Nr 1
6	M8 Socket Power supply 24V
7	M12 socket Ethernet port Nr 2
8	LK/SP : Ethernet communication port Nr.2 LED
9	MS : Ethernet Module Status LED Setting

⚠ WARNING / AVERTISSEMENT / ADVERTENCIA

UNINTENDED EQUIPMENT OPERATION

- Turn off power supplying the Smart Antenna
- This Class B product may cause radio interference.
- The cable routing rules listed in the User Guide of the EtherNet/IP splitter box must be followed.
- Properly fit all connectors with cables or sealing plugs and tighten.
- Do not use factory configured IP address for operation.
- Do not exceed the maximum number of word to read or write.
- Consult the User Guide of the EtherNet/IP Smart Antenna for more detailed informations.

Failure to follow these instructions can result in death, serious injury, or equipment damage.

FONCTIONNEMENT IMPREVU DE L'EQUIPEMENT

- Couper l'alimentation de la Smart Antenna
- Ce produit de classe B peut générer des interférences radio.
- Il faut respecter les consignes de cheminement du câble indiquées dans le manuel utilisateur du répartiteur EtherNet/IP.
- Équiper correctement tous les connecteurs de câbles ou de bouchons d'étanchéité et les serrer.
- Ne pas utiliser l'adresse IP configurée en usine lors du fonctionnement.
- Ne pas dépasser le nombre maximum de mots à lire ou écrire.
- Consulter le manuel utilisateur de la Smart Antenna EtherNet/IP pour plus de renseignements.

Le non-respect de ces instructions peut provoquer la mort, des blessures graves ou des dommages matériels.

FUNCIONAMIENTO INESPERADO DEL EQUIPO

- Desconecte la alimentación eléctrica de la Smart Antenna.
- Este producto de clase B puede causar interferencias de radio.
- Se deben seguir las reglas de cableado enumeradas en la guía de usuario de la caja de distribución EtherNet/IP.
- Ajuste correctamente todos los conectores con los cables o tapones de cierre y apriételos.
- No utilice la dirección IP configurada en fábrica para el funcionamiento.
- No supere el número máximo de palabras de lectura o escritura.
- Consulte la guía del usuario de la Smart Antenna EtherNet/IP para obtener más información.

Si no se siguen estas instrucciones pueden producirse lesiones personales graves o mortales o daños en el equipo.

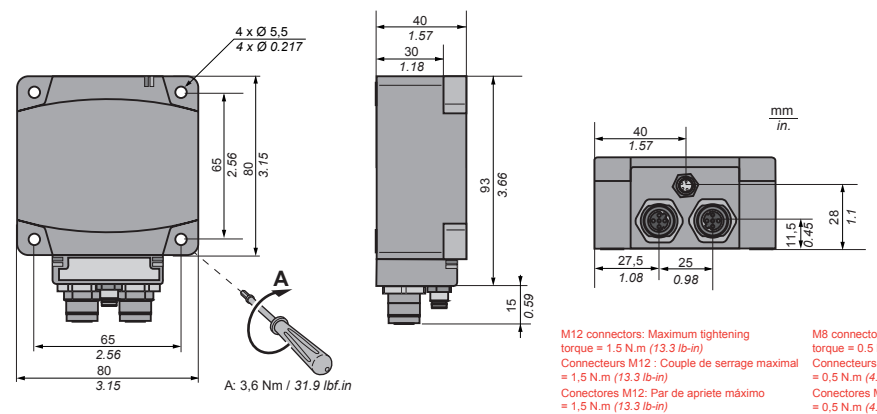
Electrical equipment should be installed, operated and maintained only by qualified personnel. No responsibility is assumed by Schneider Electric for any consequences arising out of the use of this material.

Les équipements électriques doivent être installés, exploités et entretenus par un personnel qualifié. Schneider Electric décline toute responsabilité quant aux conséquences de l'utilisation de ce matériel.

Sólo el personal de servicio cualificado podrá instalar, utilizar, reparar y mantener el equipo eléctrico. Schneider Electric no asume las responsabilidades que pudieran surgir como consecuencia de la utilización de este material.

© 2013 Schneider Electric. "All Rights Reserved."

Dimensions / Encombrements / Dimensiones



Utilization precautions / Précautions de mise en oeuvre / Precauciones de instalación

Mounting on a metal structure
 Montage sur une structure métallique
 Montaje sobre una estructura de metal

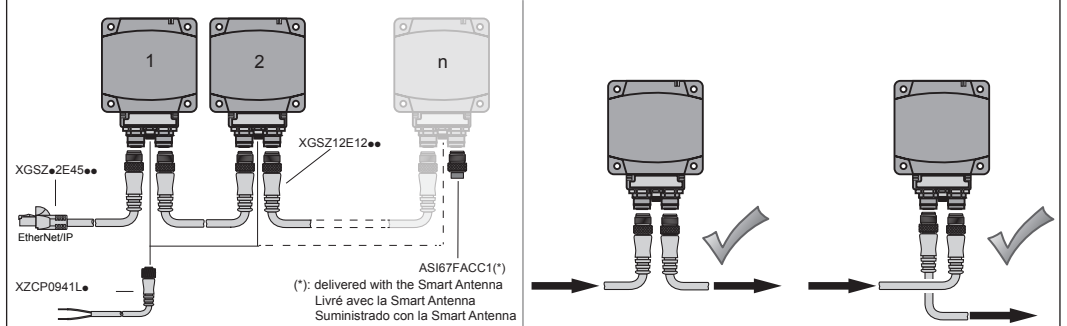
Distance between two Smart Antennas according to the used tag
 Distance entre deux Smart Antenna en fonction de l'étiquette utilisée
 Distancia entre dos Smart Antenna de acuerdo con la etiqueta utilizada

Distance between tags
 Distance entre étiquettes
 Distancia entre las etiquetas

	mm in.			mm in.	
	e1 ≥	e2 ≥	e3 ≥	d1 ≥	d2 ≥
XGHB90E340	430/6.93	750/29.53	280/11.02	110/4.33	140/5.51
XGHB221346	280/11.02	530/20.87	260/10.24	120/4.72	50/1.97
XGHB320...	310/12.2	540/21.26	240/9.45	XGHB320345	190/7.48 60/2.36
XGHB211345	200/7.87	370/14.57	170/6.69	XGHB211345	120/4.72 20/0.79
XGHB44...	310/12.2	400/15.75	160/6.3	XGHB444345	70/2.76 40/1.57
				XGHB445345	60/2.36 10/0.39
				XGHB440845	60/2.36 10/0.39
				XGHB443245	60/2.36 10/0.39

d: depending on the connector size
 d: en fonction de la taille du connecteur
 d: dependiendo del tamaño del conector

Wiring Diagrams / Schémas de câblage / Esquemas de cableado



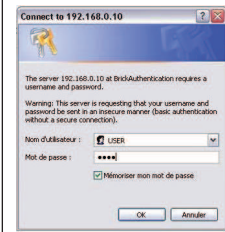
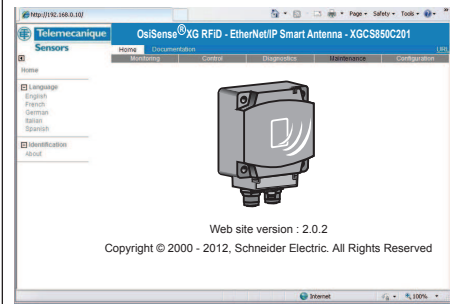
Connectors wiring / Câblage des connecteurs / Cableado de conectores

5 (Ethernet M12 D coded - 5 pins socket)			
M12 - 4 pins Connector	M12 Contact	Signal	RJ45 Connector
1	1	TD+	1
2	2	RD+	3
3	3	TD-	2
4	4	RD-	6
		Not connected	4
		Not connected	5
		Not connected	7
		Not connected	8

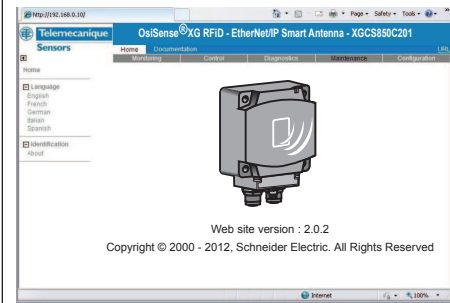
6 (M8 - 4 pins male socket)			
M8 - 4 pins Connector	M8 Contact	Signal	Power
1	1	BN	+ 24 V
2	2	WH	Not connected
3	3	BU	0 V
4	4	BK	Not connected

PELV Power supply - The 0 V must be connected to the earth to increase EMC strength.
 Alimentation TBTS - Le 0 V doit être relié à la terre pour améliorer la CEM.
 Alimentación eléctrica PELV - Los 0 V se deben conectar a tierra para mejorar la CEM.

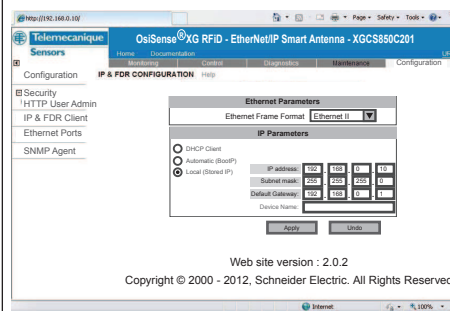
Address configuration / Configuration de l'adresse / Configuración de la dirección



- Home page / Page d'accueil / Página de inicio :



- Setup page / Page de configuration / Página de configuración :



- en** IP Address setup by the Web server:
 The XGCS850C201 Smart Antenna includes a Web server.
 The factory setting for the IP address of the XGCS850C201 is: 192.168.0.10
Connection to the Web server Home page
 Configure the computer IP address with an address which is compatible with the Smart Antenna (example: Smart Antenna = 192.168.0.10 → PC = 192.168.0.1)
 From your PC browser, enter the following address: http://192.168.0.10/
- fr** Configuration de l'adresse IP par le serveur Web :
 La Smart Antenna XGCS850C201 comprend un serveur Web.
 Le réglage usine de l'adresse IP du XGCS850C201 est : 192.168.0.10
Connexion à la page d'accueil du serveur Web
 Configurer l'adresse IP de l'ordinateur avec une adresse compatible à celle de la Smart Antenna
 (exemple : Smart Antenna = 192.168.0.10 → PC = 192.168.0.1)
- es** Configuración de dirección IP mediante el servidor web:
 La Smart Antenna XGCS850C201 incluye un servidor Web.
 El ajuste de fábrica de la dirección IP de la XGCS850C201 es: 192.168.0.10
Conexión con la página de inicio del servidor Web
 Configurar la dirección IP del ordenador con una dirección que sea compatible con la Smart Antenna (ejemplo: Smart Antenna = 192.168.0.10 → PC = 192.168.0.1)
 En el explorador del PC, introduzca la siguiente dirección: http://192.168.0.10/
- en** Security:
 User name and password are requested to secure the access to the web server.
 The factory settings are :
 User name= USER
 Password= USER
- fr** Security:
 User name and password are requested to secure the access to the web server.
 The factory settings are :
 User name= USER
 Password= USER
- es** Security:
 User name and password are requested to secure the access to the web server.
 The factory settings are :
 User name= USER
 Password= USER
- en** This page is used to configure the EtherNet/IP Smart Antenna address:
 - Choice of IP address allocation (local or automatic addressing with DHCP service)
 - Entry of the local IP address, subnet mask, and default gateway address
 - Confirm the new parameters by a click on [STORE CONFIGURATION] button
 - Cycle the power of the Smart Antenna to apply the new parameters
- fr** Cette page sert à configurer l'adresse de la EtherNet/IP Smart Antenna :
 - Choisir le type d'allocation de l'adresse IP (adressage local ou automatique par DHCP)
 - Saisir l'adresse IP locale, le masque de sous-réseau et l'adresse de passerelle par défaut
 - Confirmer les nouveaux paramètres en cliquant sur le bouton [STORE CONFIGURATION] (Stockier la configuration)
 - Redémarrer la Smart Antenna pour appliquer les nouveaux paramètres
- es** Esta página se utiliza para configurar la dirección de la EtherNet/IP Smart Antenna:
 - Opción de asignación de dirección IP (direccionamiento local o automático con servicio DHCP).
 - Entrada de dirección IP local, máscara de subred y dirección predeterminada de pasarela.
 - Confirme los nuevos parámetros haciendo clic en el botón [STORE CONFIGURATION] (Almacenar configuración).
 - Apague y vuelva a encender la Smart Antenna para aplicar los nuevos parámetros.
- en** Select [Configuration] in the menu of the home page and then, [IP & FDR Client] in the left side of the page
 Modifications in this page are applied after a power cycling of the Smart Antenna
- fr** Select [Configuration] in the menu of the home page and then, [IP & FDR Client] in the left side of the page
 Modifications in this page are applied after a power cycling of the Smart Antenna
- es** Select [Configuration] in the menu of the home page and then, [IP & FDR Client] in the left side of the page
 Modifications in this page are applied after a power cycling of the Smart Antenna