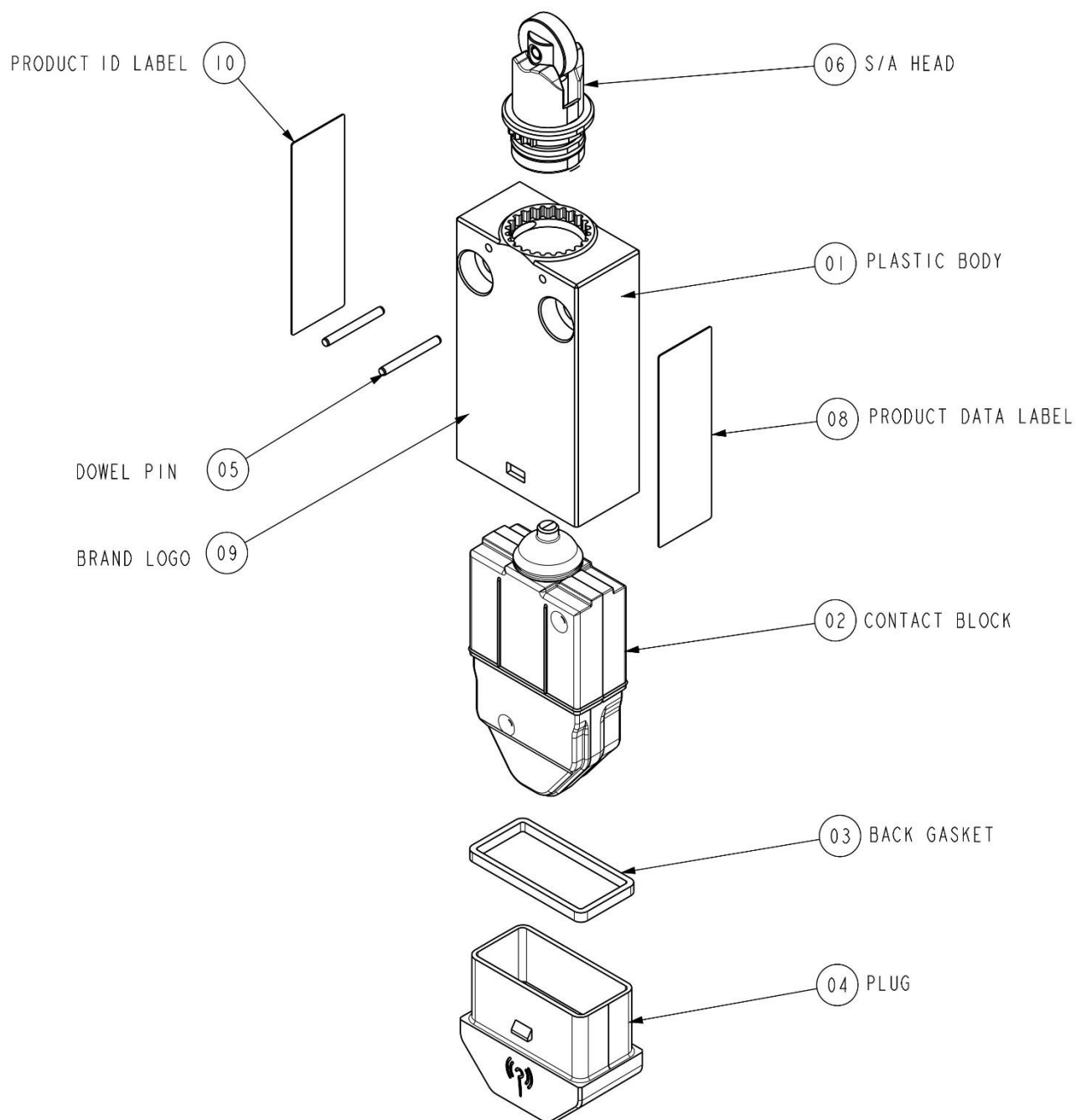


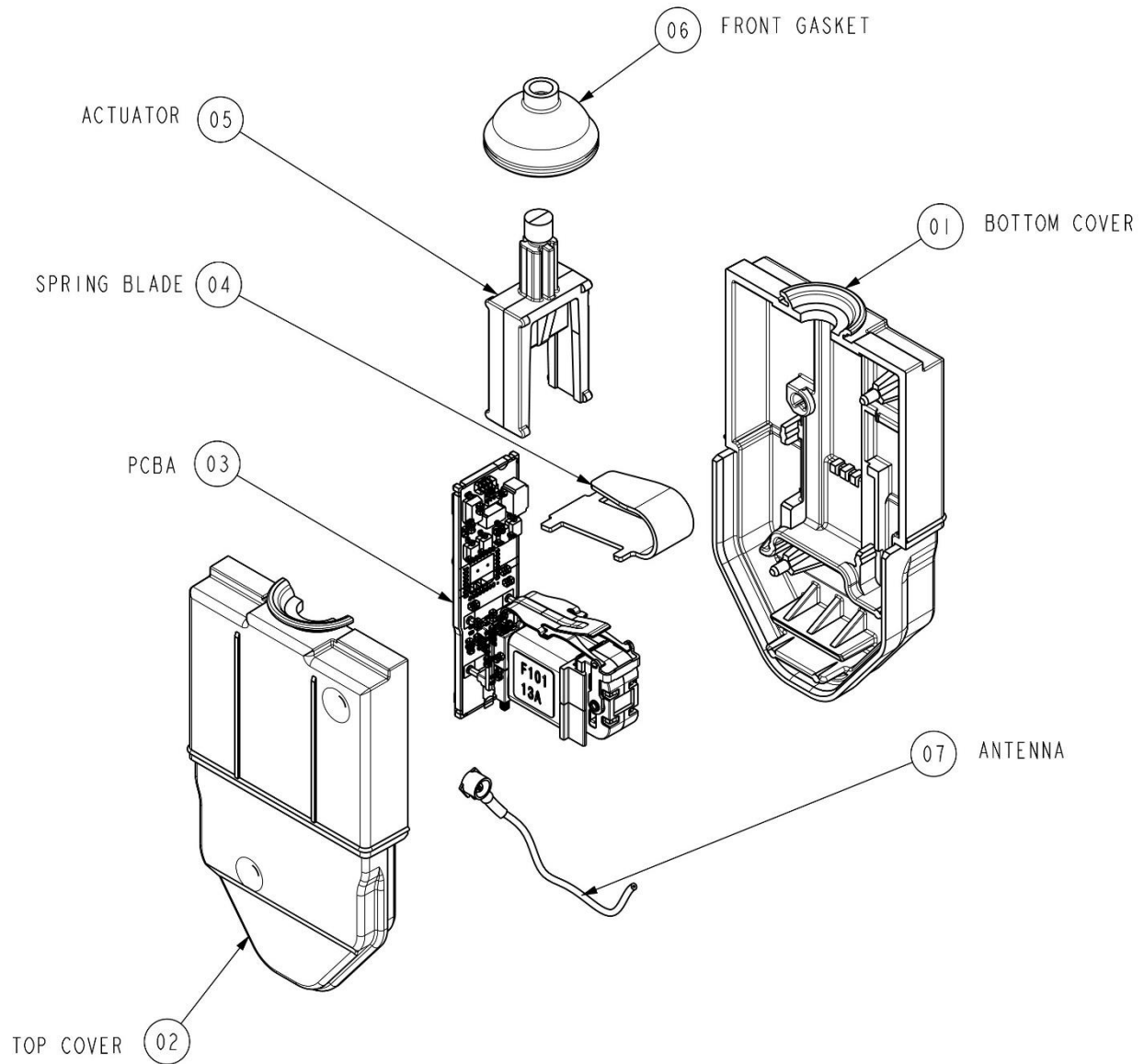
4 – Internal construction

Whatever the version of operating actuator (head) is, XCMW internal mechanical structure is always the same (see drawing below) :



The electronic of XCMW is located in a sub-assembly called “contact block” (item 02) that is always the same for all product versions.

Internal structure of the contact block is as below :

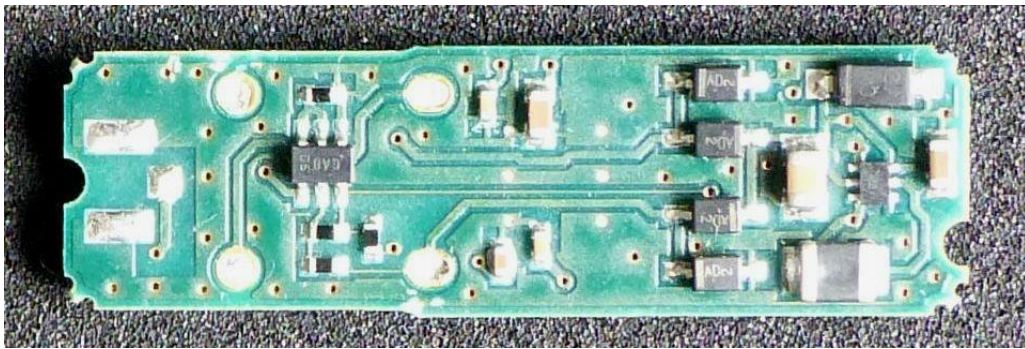


The electronic is composed of :

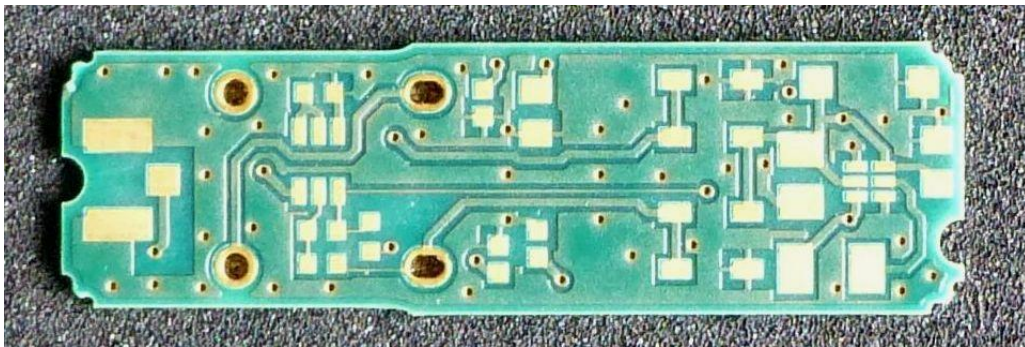
- an electronic board (that supports the radiofrequency emitter),
 - an antenna,
 - a generator (that converts the mechanical movement transmitted by the head in electrical energy to supply the electronic board),
- all located in a plastic housing.

The shape of the antenna is determined and guaranteed by a specific groove in the housing.

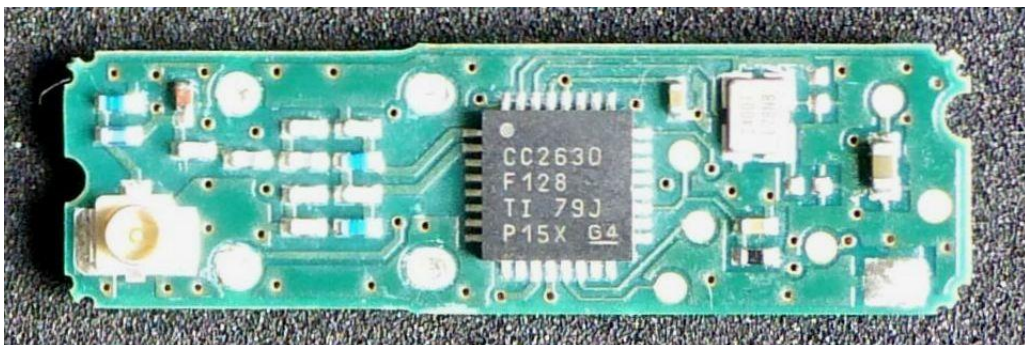
The electronic board, antenna and generator are strictly identical for all versions.



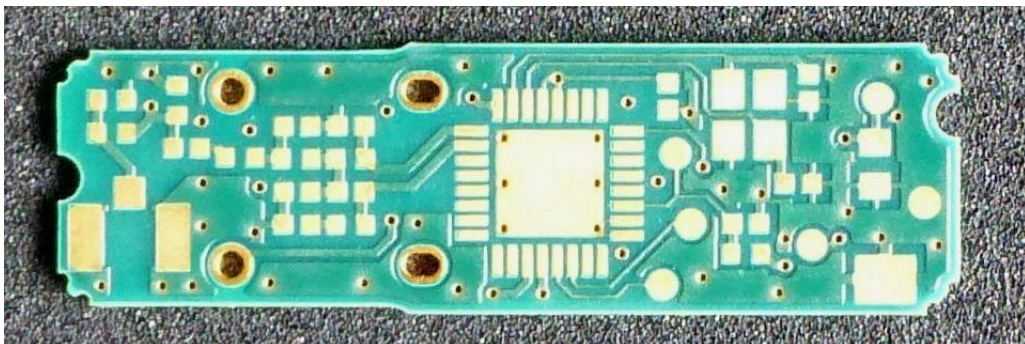
TOP side (with components)



TOP side (without components)



BOTTOM side (with components)



BOTTOM side (without components)

Sample 1: XCMW102

