

GETTING STARTED

A Plug Computer is a small form factor server for use in the home or office. Compared to their PC-based counterparts, plug computers are lower cost, consume less power, often do not have a video card, and are intended to be powered up at all times. Although plug computers often has a built-in AC power adapter, the term "plug" also refers to "plug and play" appliance-like devices which may be in any form factor.



CHECK THE PLUG COMPUTER BOX CONTENTS

The Package includes:

1. Plug Computer device.
2. USB cable.
3. Ethernet cable.
4. User Manual and Quick Start Guide

BUTTONS, CONNECTORS AND LEDS

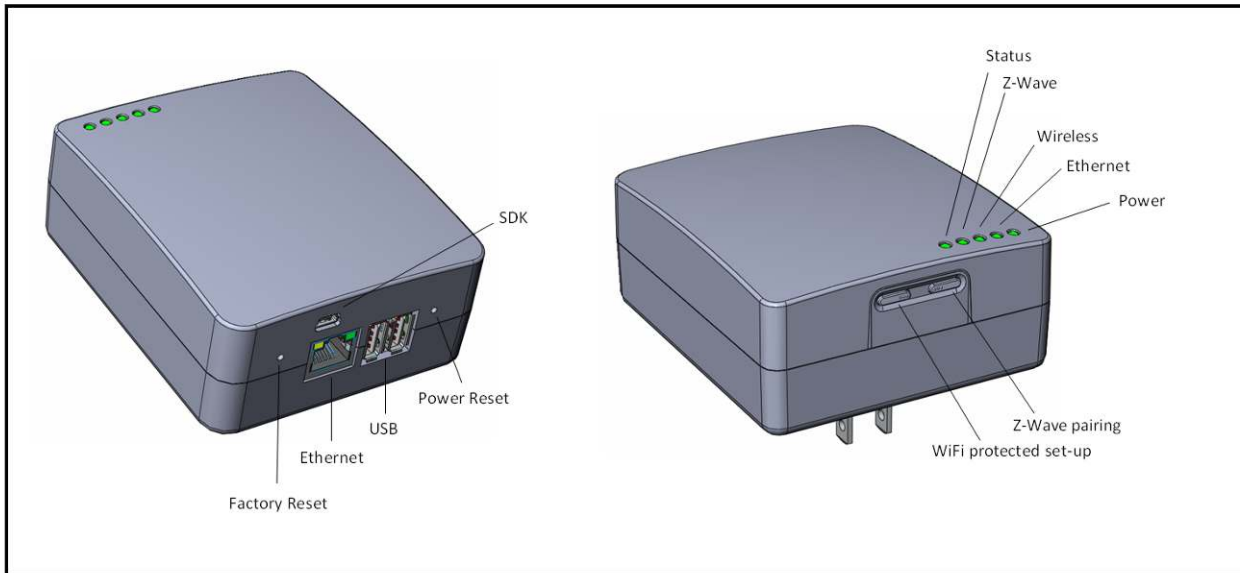
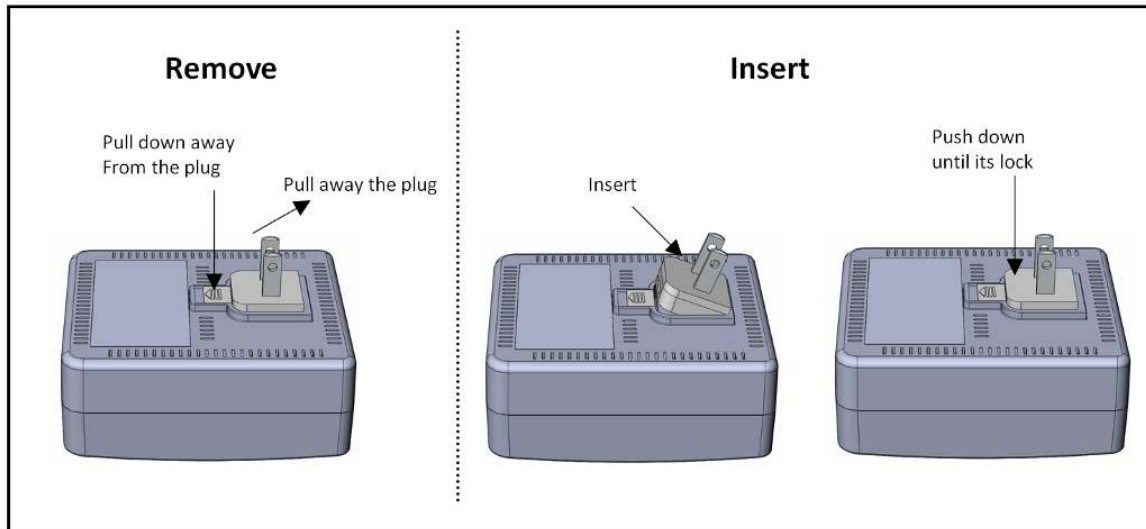


Figure 1: Some Features may not be included in your Plug model

Ethernet port:	For Ethernet LAN cable
USB port:	For other USB 2.0 device
SDK port:	SDK Console port (Development Kit Version)
Factory reset button:	Full restore to its factory setting (if applicable to your model)
Power reset button:	System reboot (if applicable to your model)
Wi-Fi Protected Setup button:	Push 'n' Connect Button for WPS
Z-Wave pairing button:	Pairing with Z-Wave device (or as assigned by Software Developer)
Power LED:	Illuminates RED on power up
Ethernet LED:	Indicates operation state on LAN
Wireless LED:	Indicates operation state on WLAN
Z-Wave LED:	Indicates connection on Z-Wave (FCC ID: V8MTS300ZW)
Status LED:	Indicates state of operation of Plug Computer

PLUG



Plug Computer is provided with interchangeable plug connector to support country-specific electrical sockets (US, EU and UK). Plug is factory-configured to its appropriate destination (e.g., in case of USA, the 2-pin connector). Insert or remove it as shown above.

CONNECT TO THE DEVICE AND ROUTER

- Step 1** Plug one end of the Ethernet cable to the **PlugComputer** Ethernet port



- Step 2** Plug the other end of the Ethernet cable into the LAN port on the back of your Home Network Router



- Step 3** Now plug the **PlugComputer** into a power outlet.



INTERPRET LED ACTIVITY

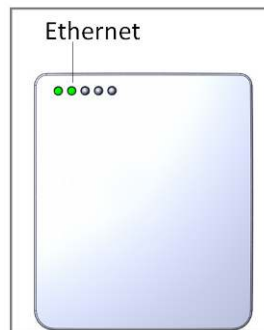
Power On

Make sure the Power LED Light on the PlugComputer Is SOLID Green



Ethernet Connected

Your Ethernet LED light is Green If the Ethernet Cable is connected.



FCC WARNING

The equipment described in this guide has been tested and found compliant with the limits for a Class B digital device, pursuant to Part 15 of the FCC rules. harmful interference when the equipment is operated in a commercial environment. This equipment generates, uses, and can radiate radio frequency energy and if not installed and used in accordance with the instruction manual, may cause harmful interference to radio communications.

However, there is no guarantee that interference will not occur in a particular installation. If this equipment does cause harmful interference to radio or television reception, which can be determined by turning the equipment off and on, the user is encouraged to try to correct the interference by one or more of the following measures:

- Reorient or relocate the receiving antenna.
- Increase the separation between the equipment and receiver.
- Connect the equipment into an outlet on a circuit different from that to which the receiver is connected.
- Consult the dealer or an experienced radio/TV technician for help.

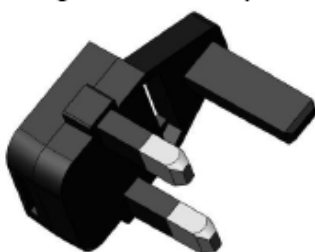
Operation of this equipment in a residential area is likely to cause harmful interference, in which case the user will be required to correct the interference at his/her own expense.

1) " IMPORTANT SAFETY INSTRUCTIONS - SAVE THESE INSTRUCTIONS DANGER - TO REDUCE THE RISK OF FIRE OR ELECTRIC SHOCK CAREFULLY FOLLOW THESE INSTRUCTIONS"

2) "For connection to a supply not in the U.S.A., use an attachment plug adapter of the proper configuration for the power outlet."



EU Model



EU Model



AC Powered products: important Safety Information
CAUTION ELECTRIC SHOCK HAZARD

- Install in accordance with manufacturer's instructions.

- Do not use this device near or in water.
- Maintain a minimum distance of at least 6 inches around device for sufficient ventilation.
- This device should be clear of items such as newspapers, table cloth, curtains, etc.
- No open flame sources, such as lighted candles, should be placed on or near the device.
- Do not install near any heat sources such as radiators, heat registers, stoves, or other device that produce heat.
- Protect the network cable from being worked on or pinched particularly at plugs, convenience receptacles, and the point where they exit at the apparatus.
- Only use attachment/accessories specified by the manufacturer.
- Refer all servicing to qualified service personnel. Servicing is required when the device has been damaged in any way, such as network adapter or cable is damaged, liquid has been spilled or objects have been into device, the device has been exposed to rain or moisture, does not operate normally, or has been dropped.

WARNING; TO REDUCE THE RISK OF FIRE OR ELECTRIC SHOCK, DO NOT EXPOSE THE DEVICE TO RAIN OR MOISTURE.

UL Safety: your product has been UL tested. It should only be used with other UL listed devices.

- All safety and operating instructions should be read and understood before using the device, and should be kept for future reference.
- Never open the device. There are no-serviceable parts inside the device. *Do not try to service this product yourself! Contact your device supplier each and every time your device need maintenance. There is a risk of electric shock!*
- Use the device in a dry location only.
- Always use the included network cable to connect the device.
- Do not insert any objects into the openings of the device.
- To disconnect the device from the power supply grid, pull the unit out of the electrical wall socket.
- Do not keep the device in direct sunlight.
- Slots and openings on the case serve as ventilation. Never block or cover them.
- Never set up the device near a heater or radiator.
- The device should be located only where sufficient ventilation can be ensured.
- Never use the device with the power supply that does not meet the specifications provided on product label. If you do not know what type of power supply at home, contact your dealer or energy supplier.
- In the event of damage, disconnect the device from the power supply grid and contact device supplier. This applies, for example, if
 - The Device's metal prongs are damaged
 - Liquid has been spilled on the device or objects have fallen into the device.
 - The device has been exposed to rain or water.
 - The device does not work, even though the operating instructions have been followed properly.
 - The device's case is damaged.

You are cautioned that changes or modifications not expressly approved by the party responsible for compliance could void your authority to operate the equipment.

This device complies with Part 15 of the FCC Rules. Operation is subject to the following two conditions:

(1) this device may not cause harmful interference and

(2) this device must accept any interference received, including interference that may cause undesired operation