

## RENAME 重新命名

The name can be set with English and numbers, total 13 digitals based on your request.

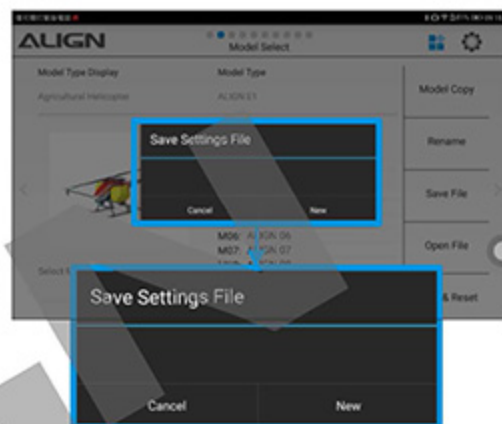
名稱可由阿拉伯數字、英文大小寫及符號共13個字元組成，使用者可依據個人喜好命名模型的名稱，以利辨別。



## SAVE FILE 儲存檔案

Save model parameter data in laptop device.

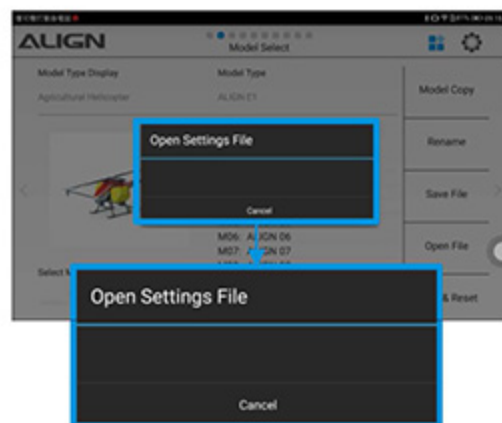
將模型參數檔案儲存至平板裝置上。



## OPEN FILE 開啓檔案

Open and read model parameter data in laptop device.

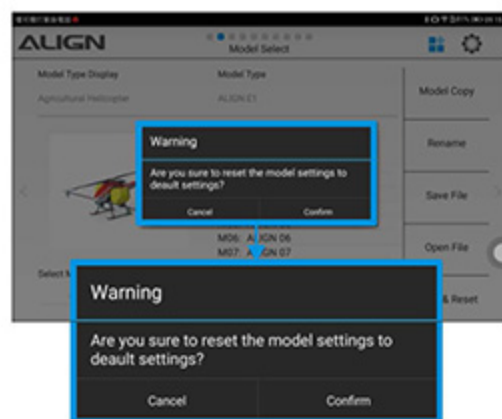
讀取平板裝置上的模型參數檔案。



## CLEAR & RESET 清除模型

Clear current parameter and settings then reset to default setting.

清除當前選定的模型名稱及參數回復至原廠預設值。



## 2 TRANSMITTER SETTINGS 發射機設定

### STICK MODE 搖桿模式




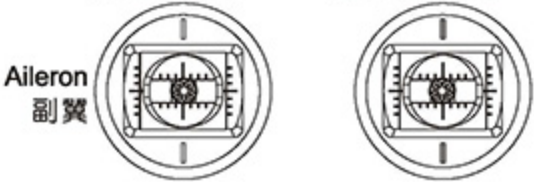
A13 GST transmitter support MODE 1 ~ MODE 4 stick modes. After selection, the stick mode and settings will change accordingly.

A13 GST遙控器支援MODE 1~MODE4共四種搖桿模式，設置完成後對應搖桿會自動切換，使用者可根據飛行習慣自行選擇。



When changing the stick mode, please double check and perform a stick calibration to ensure all channels work correctly.

更換搖桿模式會改變遙控器操作習慣，更換完成後，請確認搖桿通道反應是否正確。

MODE 1 模式1	MODE 2 模式2
<p>Elevator 升降</p> <p>Throttle 油門</p> <p>Rudder 方向</p> <p>Aileron 副翼</p> 	<p>Throttle 油門</p> <p>Elevator 升降</p> <p>Rudder 方向</p> <p>Aileron 副翼</p> 
MODE 3 模式3	MODE 4 模式4
<p>Elevator 升降</p> <p>Throttle 油門</p> <p>Aileron 副翼</p> <p>Rudder 方向</p> 	<p>Throttle 油門</p> <p>Elevator 升降</p> <p>Aileron 副翼</p> <p>Rudder 方向</p> 

### A13 GST TRANSMITTER MODE 1 AND MODE 2 CONVERSION INSTRUCTION A13 GST 遙控器-模式1~2互換教學



Align also provides A13 GST transmitter Mode 1 and Mode 2 conversion instruction, please refer to following instruction video to convert it step by step to make sure your safety and proper use of this product. <http://www.align.com.tw/A13/>

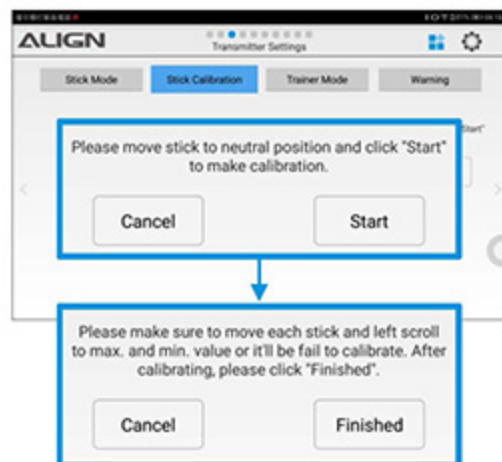
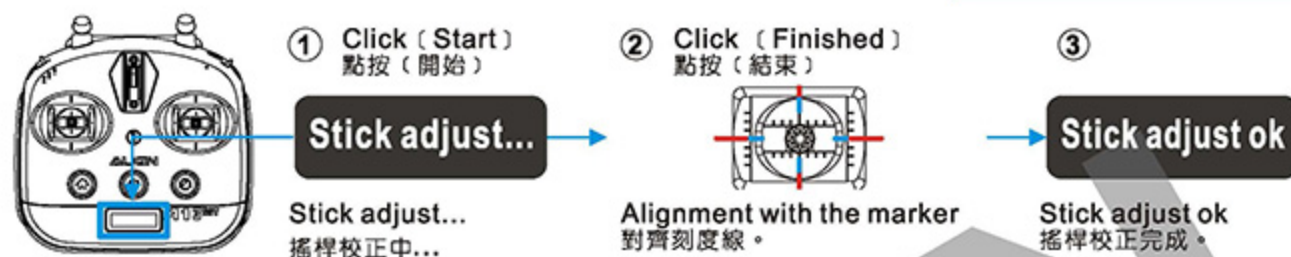
亞拓提供A13GST遙控器-模式1~2互換教學，請依循教學影片中的步驟拆解更換安裝，並利用下方連結處觀看，以確保您是安全且正確的使用本產品。網頁瀏覽 <http://www.align.com.tw/A13>



## STICK CALIBRATION 搖桿校準

Adjust transmitter and slider neutral point and max. and min. endpoints. When enter to this page, click [Start] and move the sticks and sliders to the max. and min. stroke, then put them back to neutral position (alignment with the marker). Click [Finished] for completion.

校正遙控器搖桿與滑軌開關的中立點與最大最小行程。進入此頁面後，點按〔開始〕將搖桿與滑軌開關打到最大最小行程後，回復至中立點位置(需對其刻度線)後，最終點按〔結束〕完成校正。



## TRAINER MODE 教練模式

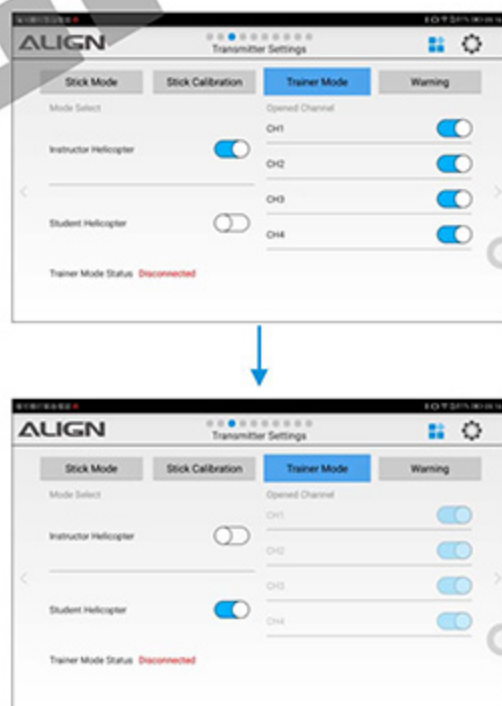
Suitable Models: Helicopter & Agricultural Helicopter  
適用模型類型：直昇機、植保機

The feature is only suitable for helicopter and agricultural helicopter setup.

The mode status will be varied from different model types. Connection status will be shown as below. Trainer Mode student can make two transmitters in connection and control at the same time through trainer cable. One transmitter is controlled by instructor while the other one by student. When trainer mode is on, instructor can control the model on his own transmitter and channels definition is locked, students can not control any model. When trainer mode is off, student can control by themselves freely.

此功能適用於直昇機、植保機模型選擇。

依使用者選擇之模型類型不同，而出現對應之模式狀態，下方會出現連線狀況。初學者可透過教飛線連接兩台遙控器一同控制。一台遙控器為教練控制，另一台遙控器為初學者學生控制。教練可通過自己的遙控器控制模型。當教練關閉開關時，初學者則恢復控制權。學員機上所有資料都被鎖定，操縱杆的資料直接由教練機開放通道定義，學員機無法直接控制任何模型。



注意

When trainer mode is on, any other transmitter connected to instructor transmitter should be off. All functions on student's transmitter is locked to prevent any flight damage or signal interference.

任何與教練遙控器連線的遙控器必須關閉。學員機上所有的設置資料將被鎖定，教練機和學員機共用教練機上的設置資料防止教練開關打開時教練機和學員機的脈衝干擾。

## MASTER / SLAVE MODE 主從模式

Suitable Models : Multicopter  
適用模型類型：多軸機

This feature is suitable for Multicopter setup. The model type will be varied from different model types. Connection status will be shown as below.

此功能適用於多軸機模型選擇。依使用者選擇之模型類型不同，而出現對應之模式狀態，下方會出現連線狀況。



## WARNING 警示提醒

For transmitter warning notice setup. Allow to make it on or off personally. For audible sound, please go to [ Volume Setup ] for adjustment.

設置發射機的警示提醒功能。可依照個人使用需求開啓或關閉警示提醒。警示音量請至〔音量調整〕中設定警示音量大小。



## 3 FAILSAFE SETTINGS 失控保護設定

A13 GST transmitter failsafe provides rescue protection. When receiver lost signal, the server or flybarless system will return to default setting. Failsafe provides two protection setup:

1. When failsafe is "OFF", server will keep at current position before lost signal.
2. When failsafe is "ON", server will perform to rescue position.

失控保護設定A13 GST遙控器提供之安全保護功能，當接收器失去訊號或中斷時，伺服器或飛控系統將恢復至預設值位置。

失控保護設定提供兩種保護設定：

1. 保護設定值為"OFF"時，則保留伺服器中斷信號前的最後一個動作指令。
2. 保護設定為所設置的保護位置時，當中斷信號時就會執行設置的保護位置指令。





## 4 RECEIVER SETTING 接收器設定

### RECEIVER BINDING 接收器對頻

Receiver Binding: Select receiver type then process binding.

接收器對頻：選擇接收器類型進行對頻。點按（對頻）鍵後會跳出“是否進行對頻”的警示窗。

Click "Confirm", APP will back to A13 setup home page and the transmitter monitor and A13 GST setup homepage will show "Binding...".

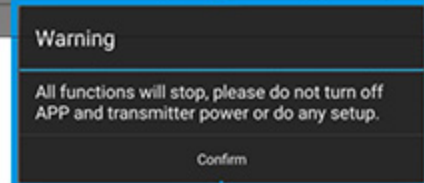
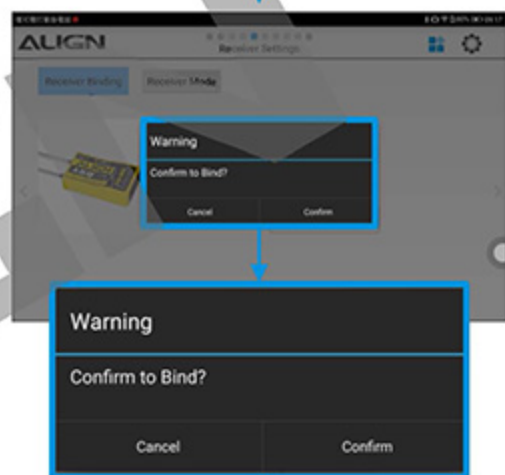
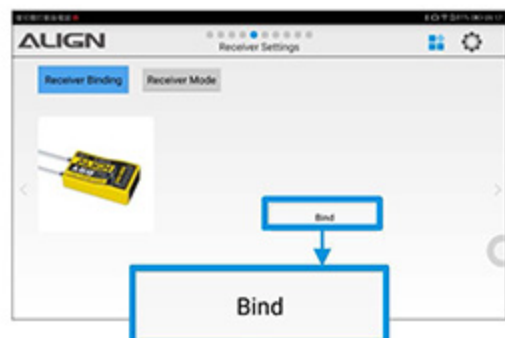
點按（確認）後，畫面會自動跳回A13設定首頁，此時遙控器螢幕及A13 GST設定首頁顯示會顯示"Binding..."。



注意

All functions will stop, please do not turn off APP and transmitter power or do any setup.

所有功能將暫停，請勿關閉APP及遙控器電源或做任何動作設定。



Signal Strength  
Binding

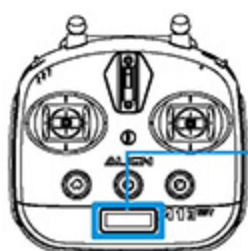
If it takes over 1 mins in binding, then system will show "Binding fail. Please rebind." Ensure to check if the antenna is well-clear and in the reception distance. Re-click (Bind) button on APP and power on RX to start binding.

對頻時間若超過1分鐘會自動退出顯示對頻失敗。請注意接收器的天線是否有遮蔽物阻擋或是已超出接收範圍。繼續點按APP (對頻) 進行接收器對頻。



Receiver will show solid red LED after binding completion. On transmitter monitor and A13 GST setup homepage, the signal strength bar will light up green. The more refers to stronger signal strength.

對頻完成後，接收器紅色燈號恆亮。遙控器螢幕及A13 GST 設定首頁顯示訊號強度越強，則燈號越多。



## RECEIVER MODE 接收器模式

Receiver Mode : PWM Channel Selection  
Using ALIGN A6B receiver, two receiver modes for selection:

Mode 1 : Set the receiver CH1 ~ CH6 sockets correspond to the channel 1 ~ channel 6 output.

Mode 2 : Set the receiver CH1 ~ CH6 socket corresponds to the channel 9 ~ channel 14 output. You can set the A6B receiver mode personally.

接收器模式：PWM通道選擇

搭配ALIGN A6B接收器使用，可選擇A6B的兩種接收模式。

模式1：接收器CH1~CH6插座對應頻道1~頻道6的輸出：

模式2：接收器CH1~CH6插座對應頻道9~頻道14的輸出。可依使用者所需來選擇A6B接收器的接收模式。



## 5 TIMER SETTINGS 計時器設定

Two ways of timer setting : Setup a countdown or start counting from "0". Pull the throttle up then start counting. You can setup your own timer personally.

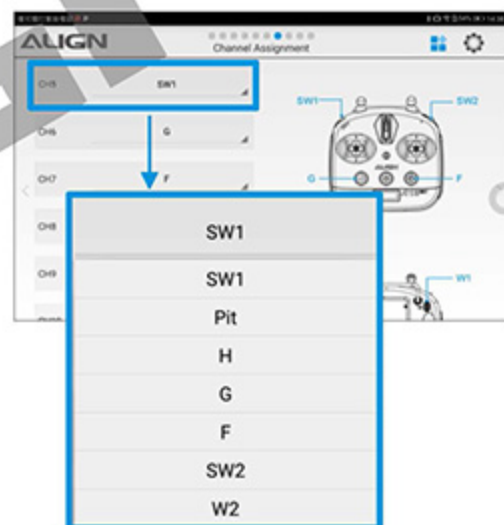
計時器設定分為倒數計時或正數計時，推啓油門即啓動計時開關。使用者可依操作習慣設定開始開關。



## 6 CHANNEL ASSIGNMENT 通道開關設定

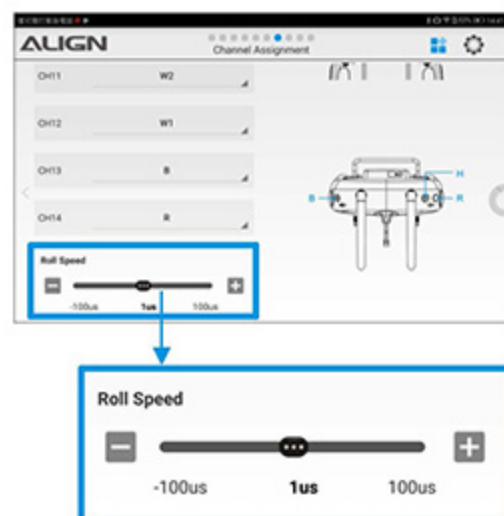
Set or revise of CH5~CH14 channel switch according to user's requirement.

依使用者需求設定或修改CH5~CH14通道位置的控制開關。



Allow to set up gimbal rolling speed individually. The bigger number refers to faster rolling speed.

依使用者需求設定雲台滾轉速度的調整量，數字越大滾轉速度幅度越大。



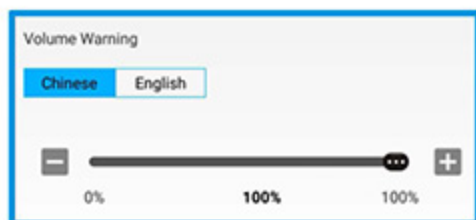


## 7 VOLUME SETUP

音量調整

Adjust the volume of transmitter button, warning and select voice language in Chinese or English.

可調整遙控器按鈕音量、警示語音音量及選擇警示語音，警世語音提供中文與英語兩種選擇



## 8 RESET TO DEFAULT SETTINGS

恢復原廠預設值

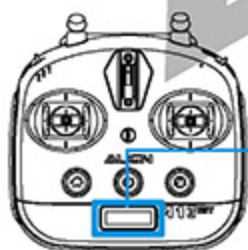
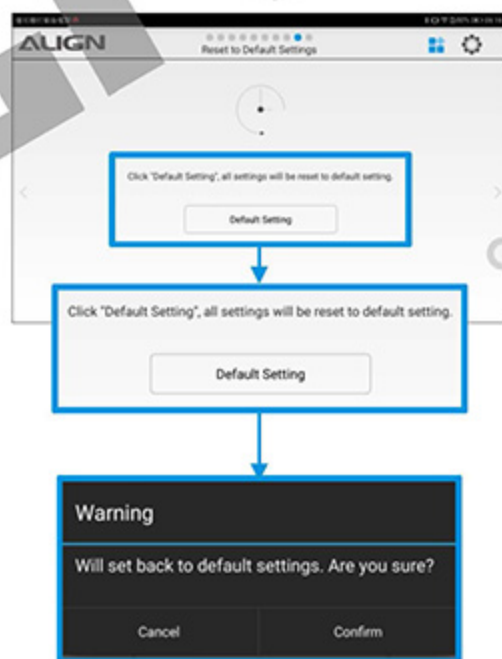
Allow restoring parameters to default settings when A13 GST Transmitter needs to be reset.

After clicking "Confirm" button, it will start processing while the signal reception bar disappears. Wait around 15 seconds, the signal reception bar will show up again after the process is completed.

當A13 GST遙控器欲重新設定時，可利用此功能將遙控器所有參數恢復至原廠預設值。

點按"確認"鍵後，A13 GST遙控器液晶面板上的接收訊號現圖示會消失，代表正在恢復原廠預設值中。

等待約15秒，A13 GST遙控器液晶面板上的接收訊號會再次出現圖示，代表已完成恢復原廠預設值。



① Wait for 15 seconds  
等待約15秒

M01 A 80%

Processing on  
"Default Settings  
Reset"  
正在恢復原廠預設值中

②

M01 A 80%

"Default Settings  
Reset" completed  
已完成恢復原廠預設值



注意

Reset parameter to default setting, all the settings will be deleted and set to factory setting accordingly.

參數恢復至原廠預設值後您所有設置的參數將會遺失。



## 9 FIRMWARE UPDATE 程式更新

### FIRMWARE DOWNLOAD 主程式下載

Current transmitter firmware version and update date will be shown in the upper right corner. Turn on mobile or Wi-Fi and click ( firmware download ) to download it.

右上角會顯示目前遙控器主程式版本及更新日期。請先開啓行動網路或Wi-Fi點按 ( 主程式下載 ) 下載主程式。



#### CAUTION 注意

All functions stop while updating firmware, do not turn off APP and transmitter power or do any setup or it might cause damage of A13 transmitter.

主程式版本更新時，所有功能將暫停，請勿關閉APP及遙控器電源或做任何動作設定，否則可能會造成A13遙控器當機損壞。

### FIRMWARE UPDATE 主程式更新

After downloading, click ( firmware update ) and update process will be shown accordingly.

下載完成後，點按 ( 主程式更新 ) 進行更新，下方會出現更新進度。



#### CAUTION 注意

After update finish, A13 transmitter will auto power off, meaning the firmware is updated completely.

更新完成後，A13遙控器會自動關機，代表主程式已更新完畢。

## 3

## FUNCTION SETUP

## 功能設定

Enter system menu, select function setup or slide the screen to enter function setup page. Some functions have different settings based on different model selection.

進入系統選單，選擇想要的功能，點按或滑動畫面進入功能設定頁面。部分功能會因選擇模型不同而有不同的功能設定。



## 1 DUAL RATE & EXPONENTIAL

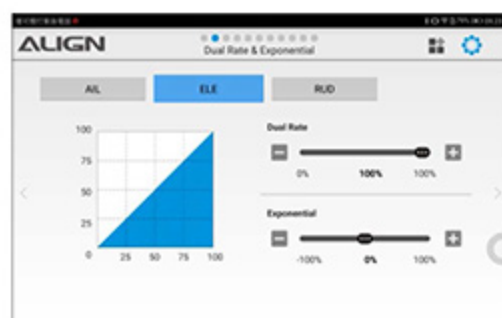
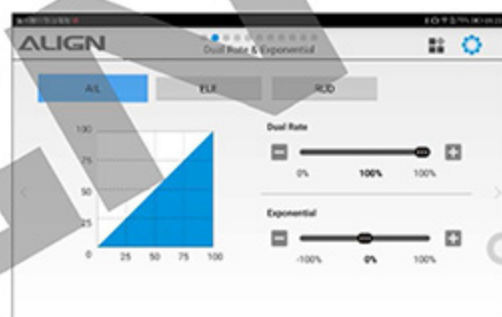
### 雙重比率&動作曲線

**DUAL RATE** : Commonly abbreviated as "D/R", dual provides the ability to change the travel distance of a channel (servo) thus affecting the overall travel of the servo(s). Decreasing the percentage value for a given servo will reduce the travel amount of the channel respectively. For example, if the rudder of the helicopter travels 1/2" at the high rate and maximum stick input, and a value of 50% is input for the low rate when the switch is moved to the low rate position, the servo moves precisely half as far per stick position. example, if the rudder control input is all the way deflected, the maximum travel is now 1/4".

**EXPONENTIAL**: Commonly abbreviated as "EXP" is used to adjust the sensitivity of center stick the neutral point. Adjusting "EXP" does not affect the travel range. For example: When EXP set at positive, the neutral point will be less sensitive and slow. When EXP set at negative, the neutral point will be sensitive and very agile.

**雙重比率** : D/R是雙重比率的縮寫簡稱，這功能可改變伺服器的行程量，然後影響伺服器的輸出。因此，減少伺服器雙重比率的百分比將會減少頻道輸出的行程量。例如：如果開關在高比率位置且撥桿為最大輸入時，對應的尾舵的輸出行程為1/2"(英吋)，當開關切到低比率且數值設定為50%，則尾舵的行程就會變成原來的一半。在這個例子中，開關切換到低比率時，尾舵的最大行程會變成1/4"(英吋)。

**動作曲線** : 簡稱EXP，主要影響動作中立點位置的輸出反應，EXP不會影響到伺服器的行程量大小，當EXP數值設定為"+"時，該動作中立點附近反應會變緩慢；反之，設定為 "-"時該動作中立點附近反應會變快變靈敏。





## 2 SERVO TRAVEL ADJUSTMENT 伺服器行程量調整

End Points for all channels (servos) can be adjusted to improve flight control based on the model. The end point can be adjusted from 0%~125%. By setting the maximum end point, this can protect the servo from over travel and damage.

調整各種伺服器及頻道範圍的大小量，以便伺服器輸出及頻道數據輸出符合結構設計及性能的要求，達到最佳的控制效果。

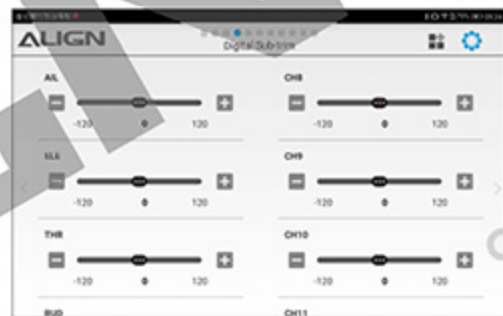
行程量限制點可以從0%~125%之間調整。設定此限制點後，即使混控等操作使得伺服器行程量增加，伺服器的動作也不會超越限制點，進而保護伺服器的鎖定及連接作用。



## 3 DIGITAL SUB-TRIM 數位微調

Sub-trim can be used on CH1~CH10 to change the channel/servo neutral position. For example; if the RC model drifts slightly, the sub-trim can correct this flight issue.

微調功能用來調整CH1~CH10頻道/伺服器的中立點，當伺服器因結構固定的角度差無法調整時，可透過微調調整每個頻道對應伺服器的中立點。例如：如果遙控模型的中立點位置輕微偏移，可透過微調能來修正該問題。



## 4 NORMAL / RESERVE 通道正反向

Reverse provides the ability to change each channel (servo) direction. It may be necessary to change the servo direction based upon the specific model requirements.

此功能針對不同類型的伺服器與其頻道輸出方向或是各種機種的安裝方式不同，調整伺服器及頻道的輸出方向，可使模型上所有伺服器的方向透過此設定改變。



Always double check all servos to confirm radio stick movement is working correctly based on the model.

操控時，請務必再次確認所有伺服器的動作方向與操控方向一致。

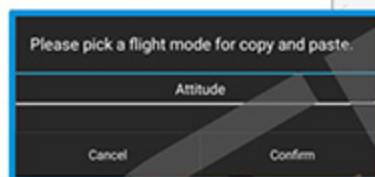
## 5 THROTTLE CURVE 油門曲線

Allows the ability to adjust the Throttle Curve based on the model and flight requirements.

The throttle curve has five adjustable points; L=0%, 1=25%, 2=50%, 3=75%, H=100% throttle stick movement. Each point can be adjusted from 0%~100% for throttle range based on motor, pitch curve, and flight requirements.

此功能用來調節油門的操作曲線，使搖桿動作與油門的相互協調，達到理想之油門輸出反應。

油門曲線提供5個主要位置點可調整，分別對應油門搖桿的最低、1/4、1/2、3/4、最高位置，每點可調整油門範圍為0%~100%，依照馬達引擎特性與螺距曲線(直昇機)搭配，匹配最佳油門曲線位置。

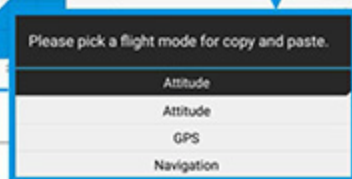
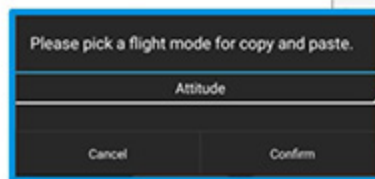


## 6 PITCH CURVE 螺距曲線

Suitable Models : Helicopter  
適用模型類型：直昇機

Pitch Curve is used for a Helicopter model. Offer five adjustable points; L=0%, 1=25%, 2=50%, 3=75%, H=100% stick travel. Each point can be adjusted from 0%~100% based on throttle range and desired pitch requirements of the helicopter model.

螺距曲線提供5個主要位置點可調整，分別對應油門搖桿的最低、1/4、1/2、3/4、最高位置，每點可調整油門範圍為0%~100%，依照您所想要的螺距輸出並匹配油門曲線來設定。





## 7 THROTTLE HOLD & THROTTLE CUT

油門鎖定&油門熄火

Suitable Models : Helicopter

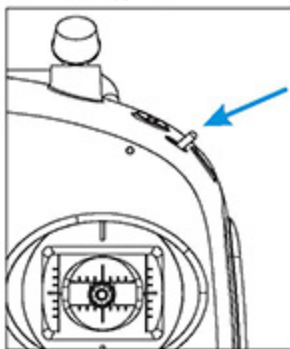
適用模型類型：直昇機

Allow setting throttle hold and throttle cut (engine cut). Throttle hold is a security setup, limiting motor or engine operation before flight or cut motor power immediately, or activate when landing.

此功能可以設定油門鎖定、油門熄火(引擎熄火)兩種功能。油門鎖定是個安全設定，可以在飛行前限制馬達或引擎的運作與突然切斷馬達動力，或是執行直昇機熄火降落時使用。



Transmitter Position  
遙控器目前位置



OFF  
油門鎖定解除

①

Transmitter Position OFF



ON  
油門鎖定開啓

②

Transmitter Position ON



FLAMEOUT  
油門熄火

③

Transmitter Position Flameout



注意

Always double check all servos to confirm radio stick movement is working correctly based on the model.

操控時，請務必再次確認所有伺服器的動作方向與操控方向一致。

## 8 GYRO GAIN

陀螺儀感度

Suitable Models : Helicopter

適用模型類型：直昇機

Suitable for a Helicopter model. Allow setting tail gyro gain of three flight mode.

可設定三種飛行模式的尾舵陀螺儀感度值

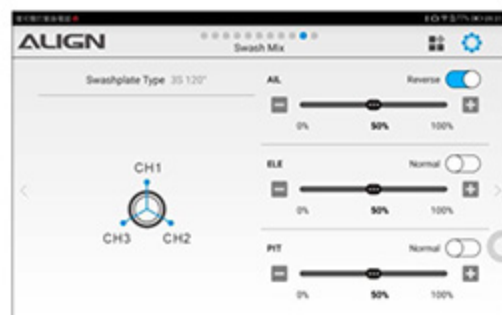


## 9 SWASH MIX 十字盤動作行程量

Suitable Models : Helicopter (3S 120°)  
適用模型類型：直昇機 (3S 120°)

Allow correct the swashplate in the aileron and elevator or direction corresponding to each operation of each condition. For example; change "reverse" switch to reverse the swashplate direction.

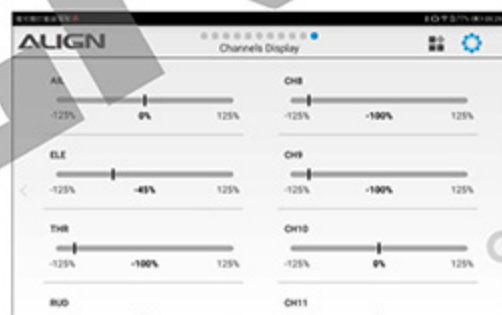
此功能是設置十字盤副翼、升降和螺距的行程動作量。若需要使十字盤動作反向，必須調整該動作右上方正反向開關



## 10 CHANNELS DISPLAY 各頻道顯示資訊

Display all channels instant operation data, also can take advantage of this function to confirm channel outputs are correct.

顯示所有頻道即時的操控資料，也可利用該功能來確認遙控個動作輸出是否正確。



# PRE-FLIGHT CHECKLIST AND WARNINGS

## 飛行前檢查與注意

Prior to every flight, carefully check all parts such as blades, screws, frame, arms, etc; ensure they are firmly secured and show no unusual wears, or unforeseen danger may happen.

Make sure to double check all APP parameter setting before flying. Incorrect settings will result in unexpected and unpredictable safety danger.

每趟飛行前須仔細檢查機身各部位之零/配件/電子設備性能是否正常，及無損耗老化現象，並確實將螺絲鎖緊才能升空飛行。做好定期檢修，避免零件或電子產品異常所造成不可預期的意外。

飛行前務必確認APP內所設定的參數是否正確，不正確的設定將會影響飛行狀態的安全，嚴重將導致不可預期的危險。

**Make sure to do all safety check carefully and seriously.  
Wish you a joyful flight experience.**

飛行前做好各項安全檢查才能有更美好的飛行狀態，  
祝福您有一個愉快的飛行體驗。



# PRODUCT SPECIFICATION

產品規格

ALIGN

## A13 GST TRANSMITTER SPECIFICATION A13 GST遙控器規格

Contents 內容	Specifications 規格
Output Channel 通道數量	14 channels
Model Type 適用機型	Helicopter/ Multicopter 直昇機 / 多軸機
RF Range 頻率範圍	2.408GHz~2.475GHz
RF 發射功率	<20dBm(For EU)
System Mode 系統模式	2.4G system: AFHDS
Power 電源	Built-in 2S 7.4V 5800mAh Li-Polymer Battery 內建 2S 7.4V 5800mAh 充電式鋰電池
Display 顯示方式	128x64mm
Transmit Distance 發射距離	In the air without interference < 1000 meters 空曠無干擾空中距離 : < 1000 米
Weight 重量	650g
Dimension: (L x W x H) 尺寸	167x180x103mm
Certificate 認證	CE, FCC
Bluetooth Work Frequency Band 藍牙工作頻段	2402~2480MHz
Bluetooth Max. Power 藍牙最大功率	<8dBm(Declaration for EU compliance)

## A6B RECEIVER SPECIFICATION A6B接收器規格

Contents 內容	Specifications 規格
Output Channel 通道數量	14 channels
RX Sensitivity 接收器靈敏度	-105dbm
RF Range 頻率範圍	2.408GHz~2.475GHz
System Mode 系統模式	2.4G system: AFHDS
Power 電源標準	4.0~8.4V DC
Receive Distance 接收距離	In the air without interference < 1000 meters 空曠無干擾空中距離 : < 1000 米
Weight 重量	14g
Dimension: (L x W x H) 尺寸	46.7x25.5x13.6mm
Certificate 認證	CE, FCC

Thank you for purchasing and supporting ALIGN products.

The Align Team is dedicated to you by innovating and developing new RC Helicopters, Multicopters, and FPV Racing Quads. We strive to provide a more diversified experience for our customers. Visit our website at [www.align.com.tw](http://www.align.com.tw) for latest news, information, and updates about our extensive line of products for the RC enthusiasts.

### Good Flying!

再次感謝您對亞拓系列商品的喜愛與支持，您的肯定是對我們最大的認同。

亞拓團隊秉持創新研發的精神，開發遙控直昇機／多軸飛行機／穿越機系列商品，提供給您體驗更多樣化的飛行樂趣。您可以透過下列連結，隨時瞭解亞拓的最新動態，以及各項訊息分享。

祝福您有一個愉快的飛行體驗。



**ALIGN Flight Safety 亞拓飛行安全宣導**  
<http://www.align.com.tw/flysafe-en/>



**ALIGN T-REX Helicopter 亞拓遙控直昇機**  
<http://www.align.com.tw/helicopter-en/>



**ALIGN Multicopter 亞拓多軸飛行機**  
<http://www.align.com.tw/multicopter-en/>



**ALIGN FPV Racing Quad 亞拓穿越機**  
<http://www.align.com.tw/multicopter-en/mr25/>



**ALIGN Website 亞拓官網**  
<http://www.align.com.tw>



**ALIGN Shopping Cart 亞拓購物車**  
<http://shop.align.com.tw/index.php?language=en>



**ALIGN Quick Finder 亞拓零件快速購**  
<http://shop.align.com.tw/partfinder.php?language=en>



**ALIGN FaceBook**  
<https://www.facebook.com/Align-Corporation-194493419543/?ref=mf>



**ALIGN Instagram**  
<https://instagram.com/aligncorporation/>



**ALIGN YouTube**  
[https://www.youtube.com/channel/UCaPj\\_K5DNo7HSmP1eytUvMQ](https://www.youtube.com/channel/UCaPj_K5DNo7HSmP1eytUvMQ)



**ALIGN Youku**  
<http://i.youku.com/u/UMTQ0NjEwNjczNg==>

**ALIGN**



www.align.com.  
www.al  
www.align.com  
www.align  
www.align.com.tw  
www.align.com.tw  
www.align.com.tw

# ALIGN