

Caution

Any changes or modifications in construction of this device which are not expressly approved by the party responsible for compliance could void the user's authority to operate the equipment.

Note

This equipment has been tested and found to comply with the limits for a Class B digital device, pursuant to part 15 of the FCC Rules. These limits are designed to provide reasonable protection against harmful interference in a residential installation. This equipment generates, uses and can radiate radio frequency energy and, if not installed and used in accordance with the instructions, may cause harmful interference to radio communications. However, there is no guarantee that interference will not occur in a particular installation. If this equipment does cause harmful interference to radio or television reception, which can be determined by turning the equipment off and on, the user is encouraged to try to correct the interference by one or more of the following measures:

- Reorient or relocate the receiving antenna.
- Increase the separation between the equipment and receiver.
- Connect the equipment into an outlet on a circuit different from that to which the receiver is connected.
- Consult the dealer or an experienced radio / TV technician for help.

This device complies with Part 15 of the FCC's Rules. Operation is subject to the following two

Conditions

1. This device may not cause harmful interference, and
2. This device must accept any interference received, including interference that may cause undesirable operation.

CE 2200

Hereby, Green Power Electronics, Co.Ltd. declares that this GP200WT is in compliance with the essential requirements and other relevant provisions of directive 1999/5/EC.

GPPEL™
SMART · SIMPLE · STYLE

Korea
www.gpel.com

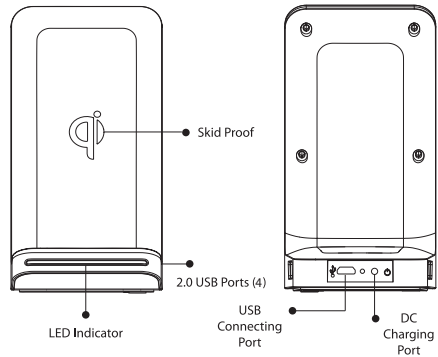
USA
www.gpelstore.com

User Guide
GP200WT Wireless Charging Stand
+ 4 Ports USB Hub



CE 2200
FCC ID:Y4H-GP200WT
RoHS

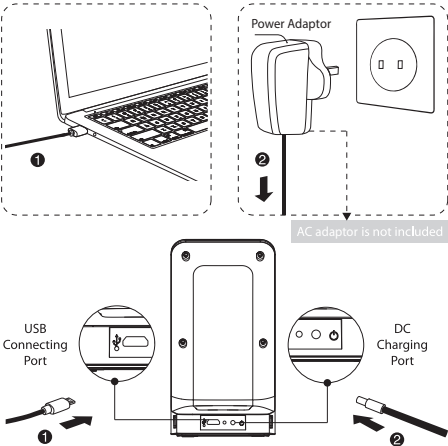
GP200WT Overview



(2.0 USB Ports for wireless mouse, keyboard and storages USB)

	Color	Status
	Off	Not Connected to Power Source or ready to Charge
	Red	Smartphone battery is charged

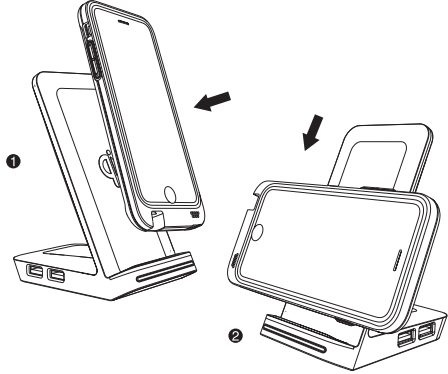
Connecting to USB Cable



- 1 Connect USB Cable to GP200WT Micro USB port and your PC or laptop
- 2 Connect DC Cable to GP200WT DC port and USB power adaptor

※ If you want to use the charging function and USB Hub function simultaneously then you should have to connect DC cable and USB Cable

Smartphone Wireless Charging



- 1 Please make sure the LED light indicator is off before charging
- 2 Place your mobile device on the wireless charger. The LED light will turn red, indicating that your phone is charging

Important Note :

The LED Light indicator will not be turned on when your device is placed improperly on the charger. Please rearrange your device to charge

Device Info

Interface : Wireless, USB Hub, Micro USB, DC Power
Packaging Contents : Wireless Charger, USB Cable, User Guide
DC jack Cable
Dimension (WxHxD) : 2.7 x 4.2 x 5.2 inch (70 x 106 x 132 mm)
Weight : 7.7oz (218 g)
Input Voltage : DC 5 V, 1A(Connected to Laptop - 5V, 500mA)
Output Current : DC 5V, 700mA

Warning

1. Do not disassemble – the inner circuit conductors may be damaged severely.
2. Do not place the wireless charger on items and cards with magnetic chips (ID cards, bank cards, etc).
3. Warn children the potential dangers of the wireless charger. Keep charger away from small children.
4. Do not throw the charger into water or into fire.
5. Overloaded and overheating may lead to fire.
6. Do not use the wireless charger on overheated devices.
7. Do not put near places with burning fire.
8. Please keep at least 20cm of distance between implantable medical devices such as pacemakers and cochlear to avoid potential interference.

Important Note :

Power adaptor is not included in the package.
If needed, please purchase separately.
(Recommend over 2A Power adaptor)