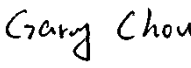
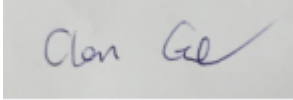


RF TEST REPORT



Report No.: FCC_RF_SL1503101-SPC-045_04L2 Rev 3.0
 Supersede Report No.: FCC_RF_SL1503101-SPC-045_04L2 Rev 2.0

Applicant	SpiderCloud Wireless, Inc.		
Product Name	SpiderCloud Radio Node		
Model No.	SCRN-310-04L2		
Test Standard	47CFR Part 24/27		
Test Method	TIA-603-D: 2010		
FCC ID	Y47RN310B4L2		
Date of test	02/13/2014 - 09/30/2015 09/21/2016 - 09/28/2016		
Issue Date	03/10/2017		
Test Result	<u>Pass</u>	Fail	
Equipment complied with the specification			[x]
Equipment did not comply with the specification			[]
			
Gary Chou		Chen Ge	
Test Engineer		Engineer Reviewer	
This test report may be reproduced in full only Test result presented in this test report is applicable to the tested sample only			

Issued By:
 SIEMIC Laboratories
 775 Montague Expressway, Milpitas, 95035 CA



775 Montague Expressway, Milpitas, CA 95035, USA • Phone: (+1) 408 526 1188 • Facsimile (+1) 408 526 1088

Visit us at: www.siemic.com; Follow us at:

Laboratory Introduction

SIEMIC, headquartered in the heart of Silicon Valley, with superior facilities in US and Asia, is one of the leading independent testing and certification facilities providing customers with one-stop shop services for Compliance Testing and Global Certifications.



In addition to testing and certification, SIEMIC provides initial design reviews and compliance management throughout a project. Our extensive experience with China, Asia Pacific, North America, European, and International compliance requirements, assures the fastest, most cost effective way to attain regulatory compliance for the global markets.

Accreditations for Conformity Assessment

Country/Region	Accreditation Body	Scope
USA	FCC, A2LA	EMC , RF/Wireless , Telecom
Canada	IC, A2LA, NIST	EMC, RF/Wireless , Telecom
Taiwan	BSMI , NCC , NIST	EMC, RF, Telecom , Safety
Hong Kong	OFTA , NIST	RF/Wireless ,Telecom
Australia	NATA, NIST	EMC, RF, Telecom , Safety
Korea	KCC/RRA, NIST	EMI, EMS, RF , Telecom, Safety
Japan	VCCI, JATE, TELEC, RFT	EMI, RF/Wireless, Telecom
Mexico	NOM, COFETEL, Caniety	Safety, EMC , RF/Wireless, Telecom
Europe	A2LA, NIST	EMC, RF, Telecom , Safety
Israel	MOC, NIST	EMC, RF, Telecom, Safety

Accreditations for Product Certifications

Country	Accreditation Body	Scope
USA	FCC TCB, NIST	EMC , RF , Telecom
Canada	IC FCB , NIST	EMC , RF , Telecom
Singapore	iDA, NIST	EMC , RF , Telecom
EU	NB	EMC & R&TTE Directive
Japan	MIC (RCB 208)	RF , Telecom
HongKong	OFTA (US002)	RF , Telecom

CONTENTS

1 REPORT REVISION HISTORY4

2 EXECUTIVE SUMMARY5

3 CUSTOMER INFORMATION5

4 TEST SITE INFORMATION5

5 MODIFICATION5

6 EUT INFORMATION6

6.1 EUT Description6

6.2 Radio Description7

6.3 EUT test modes/configuration Description.....7

6.4 EUT Photos - External Internal Antenna:.....8

External Antenna:9

6.6 EUT Photos - Internal10

6.7 EUT Test Setup Photos11

7 SUPPORTING EQUIPMENT/SOFTWARE AND CABLING DESCRIPTION.....13

7.1 Supporting Equipment13

7.2 Test Software Description13

8 TEST SUMMARY.....14

9 MEASUREMENT UNCERTAINTY15

10 MEASUREMENTS, EXAMINATION AND DERIVED RESULTS16

10.1 RF Output Power16

10.2 Peak-Average Ratio35

10.3 Occupied Bandwidth44

10.4 Band Edge55

10.5 Spurious Emission below 1GHz.....66

10.6 Radiated Spurious Emissions above 1GHz.....70

10.7 Frequency Stability.....74

ANNEX A. TEST INSTRUMENT.....76

ANNEX B. SIEMIC ACCREDITATION77

1 Report Revision History

Report No.	Report Version	Description	Issue Date
FCC_RF_SL15083101-SPC-045_0402	None	Original	10/01/2015
FCC_RF_SL15083101-SPC-045_0402 Rev 1.0	Rev 1.0	Updated test data	10/14/2015
FCC_RF_SL15083101-SPC-045_0402 Rev 2.0	Rev 2.0	Add external antenna	10/14/2016
FCC_RF_SL1583101-SPC-045_04L2 Rev 3.0	Rev 3.0	Updated rule part	03/10/2017

2 Executive Summary

The purpose of this test program was to demonstrate compliance of following product

Company: SpiderCloud Wireless, Inc.
Product: SpiderCloud Radio Node
Model: SCRN-310-04L2

against the current Stipulated Standards. The specified model product stated above has demonstrated compliance with the Stipulated Standard listed on 1st page.

3 Customer information

Applicant Name	SpiderCloud Wireless, Inc.
Applicant Address	408 E. Plumeria Drive, San Jose, CA 95134
Manufacturer Name	SpiderCloud Wireless, Inc.
Manufacturer Address	408 E. Plumeria Drive, San Jose, CA 95134

4 Test site information

Lab performing tests	SIEMIC Laboratories
Lab Address	775 Montague Expressway, Milpitas, CA 95035
FCC Test Site No.	881796
IC Test Site No.	4842D-2
VCCI Test Site No.	A0133

5 Modification

Index	Item	Description	Note
-	-	-	-

6 EUT Information

6.1 EUT Description

Product Name	SpiderCloud Radio Node
Model No.	SCRN-310-04L2
Trade Name	SpiderCloud
Serial No.	13338A10454
Input Power	56VDC (PoE)
Power Adapter Manu/Model	POE36U-1AT-R
Power Adapter SN	-
Hardware version	-
Software version	-
Date of EUT received	2/10/2014
Equipment Class/ Category	TNB
Operating Frequencies	LTE: TX (1930 MHz to 1995 MHz), LTE: RX (1850 MHz to 1915 MHz) LTE: TX (2110 MHz to 2155 MHz), LTE: RX (1710 MHz to 1755 MHz)
Port/Connectors	RJ45 (PoE)
Remark	NONE

6.2 Radio Description

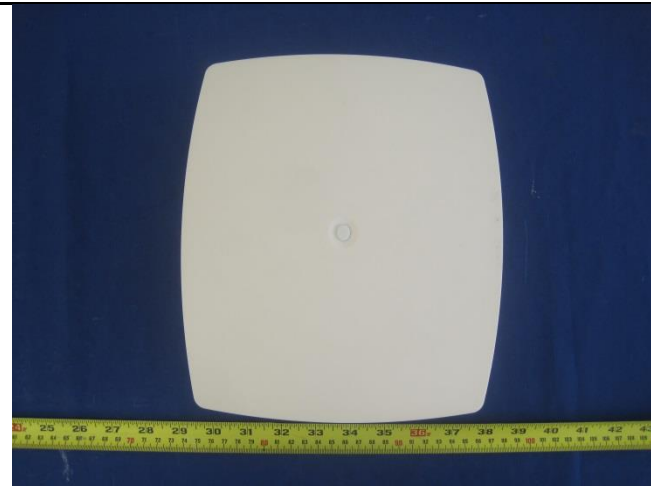
Item	LTE	LTE
Operating Band /Radio Type	LTE Band 4	LTE Band 2
Bandwidth	5MHz, 10 MHz, 15MHz, 20 MHz	5MHz, 10 MHz, 15MHz, 20 MHz
Modulation	QPSK/16QAM/64QAM	QPSK/16QAM/64QAM
Antenna Type	Internal Omni-directional antenna/ External Dipole antenna	Internal Omni-directional antenna/ External Dipole antenna
Antenna Gain	3 dBi/ 2dBi	3 dBi/ 2dBi
Frequency TX(MHz)	TX: 2110 MHz to 2155 MHz RX: 1710 MHz to 1755 MHz	TX: 1930 MHz to 1995 MHz RX: 1850 MHz to 1915 MHz

6.3 EUT test modes/configuration Description

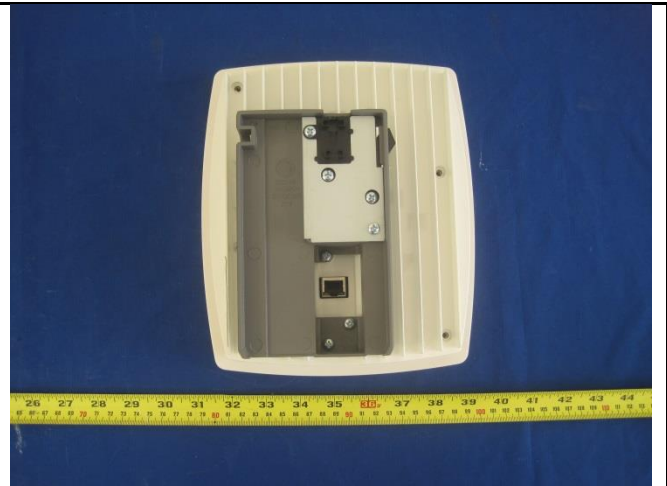
Test mode

	Final Test Mode	Note
Final_test_mode_1	Continuous transmission, 5MHz, QPSK, Low CH	LTE-Band4/Band2
Final_test_mode_2	Continuous transmission, 5MHz, QPSK, Mid CH	LTE-Band4/Band2
Final_test_mode_3	Continuous transmission, 5MHz, QPSK, High CH	LTE-Band4/Band2
Final_test_mode_4	Continuous transmission, 10MHz, QPSK, Low CH	LTE-Band4/Band2
Final_test_mode_5	Continuous transmission, 10MHz, QPSK, Mid CH	LTE-Band4/Band2
Final_test_mode_6	Continuous transmission, 10MHz, QPSK, High CH	LTE-Band4/Band2
Final_test_mode_7	Continuous transmission, 15MHz, QPSK, Low CH	LTE-Band4/Band2
Final_test_mode_8	Continuous transmission, 15MHz, QPSK, Mid CH	LTE-Band4/Band2
Final_test_mode_9	Continuous transmission, 15MHz, QPSK, High CH	LTE-Band4/Band2
Final_test_mode_10	Continuous transmission, 20MHz, QPSK, Low CH	LTE-Band4/Band2
Final_test_mode_11	Continuous transmission, 20MHz, QPSK, Mid CH	LTE-Band4/Band2
Final_test_mode_12	Continuous transmission, 20MHz, QPSK, High CH	LTE-Band4/Band2
Final_test_mode_13	Continuous transmission, 5MHz, 64QAM, Low CH	LTE-Band4/Band2
Final_test_mode_14	Continuous transmission, 5MHz, 64QAM, Mid CH	LTE-Band4/Band2
Final_test_mode_15	Continuous transmission, 5MHz, 64QAM, High CH	LTE-Band4/Band2
Final_test_mode_16	Continuous transmission, 10MHz, 64QAM, Low CH	LTE-Band4/Band2
Final_test_mode_17	Continuous transmission, 10MHz, 64QAM, Mid CH	LTE-Band4/Band2
Final_test_mode_18	Continuous transmission, 10MHz, 64QAM, High CH	LTE-Band4/Band2
Final_test_mode_19	Continuous transmission, 15MHz, 64QAM, Low CH	LTE-Band4/Band2
Final_test_mode_20	Continuous transmission, 15MHz, 64QAM, Mid CH	LTE-Band4/Band2
Final_test_mode_21	Continuous transmission, 15MHz, 64QAM, High CH	LTE-Band4/Band2
Final_test_mode_22	Continuous transmission, 20MHz, 64QAM, Low CH	LTE-Band4/Band2
Final_test_mode_23	Continuous transmission, 20MHz, 64QAM, Mid CH	LTE-Band4/Band2
Final_test_mode_24	Continuous transmission, 20MHz, 64QAM, High CH	LTE-Band4/Band2
Remark: NONE		

**6.4 EUT Photos - External
 Internal Antenna:**



Top View



Bottom View



Front View



Rear View



Left Side View



Right Side View

External Antenna:



Top View



Bottom View



Front View



Rear View

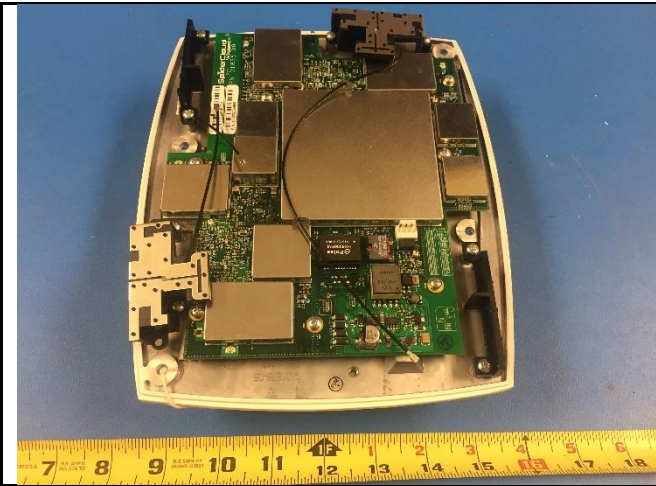


Left Side View

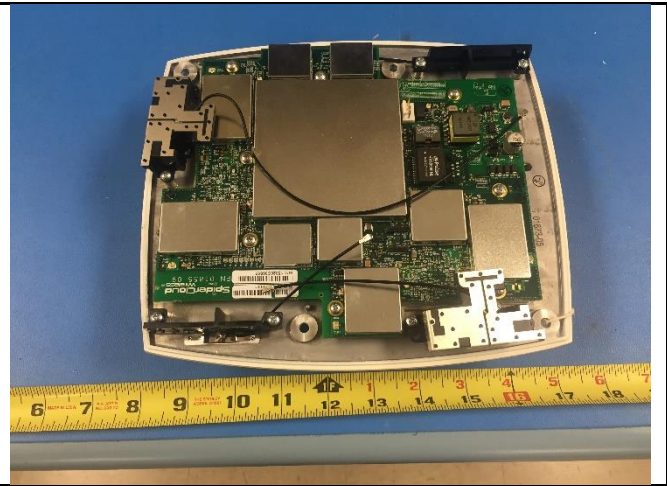


Right Side View

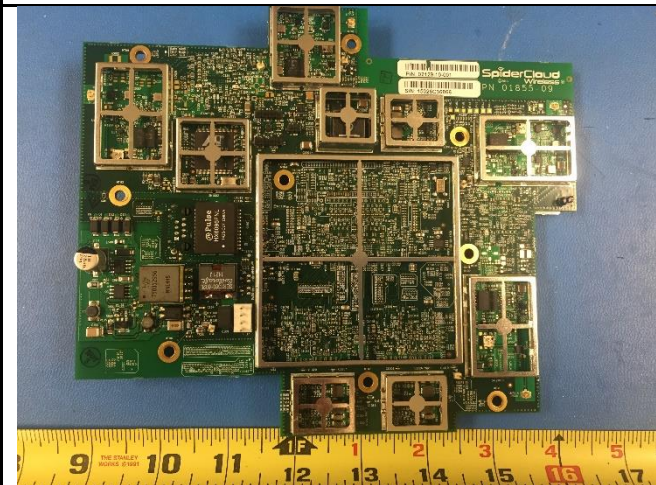
6.6 EUT Photos - Internal



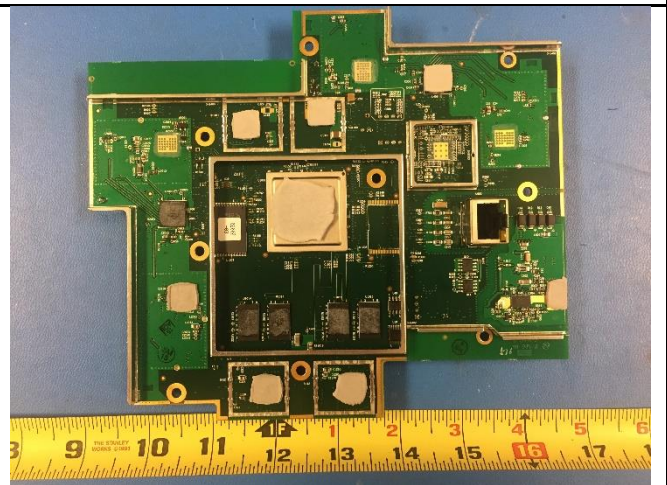
Top View Top Cover Off 1



Top View Top Cover Off 2



Main PCB - Top View



Main PCB - Bottom View

6.7 EUT Test Setup Photos

Internal Antenna:



Radiated Emissions (<1GHz) – Front View



Radiated Emissions (<1GHz) – Rear View



Radiated Emissions (>1GHz) – Front View



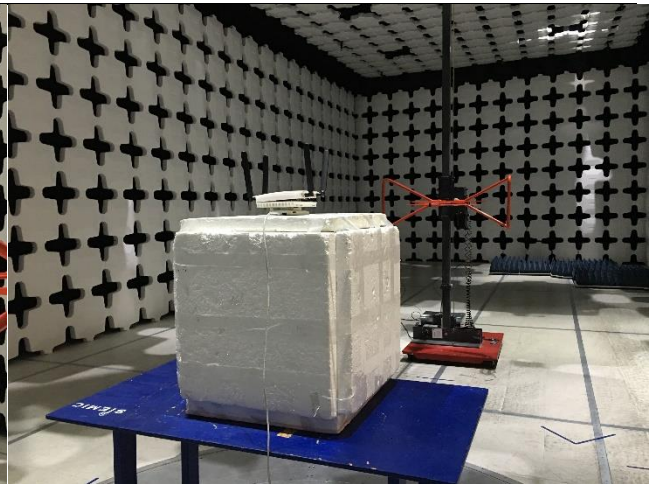
Radiated Emissions (>1GHz) – Rear View

Note: The spurious emission in different EUT orientation was investigated, including the EUT standing up position and the laying down position. The EUT orientation shown in above setup photo is the worst case position.

External Antenna:



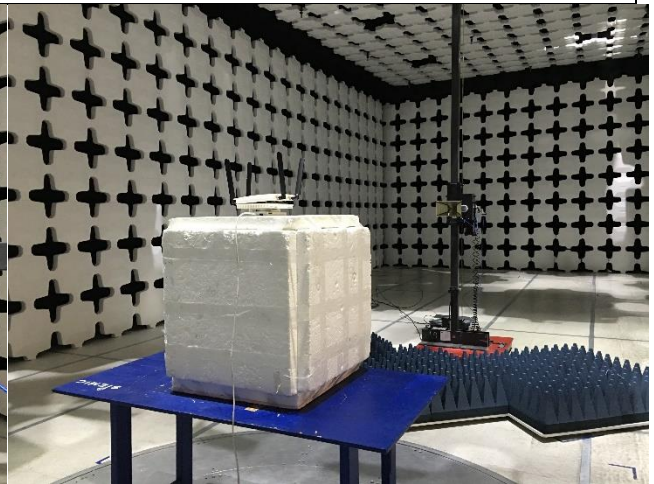
Radiated Emissions (<1GHz) – Front View



Radiated Emissions (<1GHz) – Rear View



Radiated Emissions (>1GHz) – Front View



Radiated Emissions (>1GHz) – Rear View

Note: The spurious emission in different EUT orientation was investigated, including the EUT standing up position and the laying down position. The EUT orientation shown in above setup photo is the worst case position.

7 Supporting Equipment/Software and cabling Description

7.1 Supporting Equipment

Item	Supporting Equipment Description	Model	Serial Number	Manufacturer	Note
1	PoE Adatper	POE36U-1AT-R	P90212324A1	Phihong	-

7.2 Test Software Description

Test Item	Software	Description
RF testing	ePerview	Enable EUT continuous TX mode and change to different channel

8 Test Summary

Test Item	Test standard		Test Method/Procedure		Pass / Fail
E.R.P/ E.I.R.P	FCC	47CFR24.232, 27.50	FCC	TIA-603-D: 2010	<input checked="" type="checkbox"/> Pass <input type="checkbox"/> N/A
Occupied Bandwidth	FCC	47CFR24.238, 27.53	FCC	TIA-603-D: 2010	<input checked="" type="checkbox"/> Pass <input type="checkbox"/> N/A
Peak-Average Ratio	FCC	47CFR24.232, 27.50	FCC	TIA-603-D: 2010	<input checked="" type="checkbox"/> Pass <input type="checkbox"/> N/A
Spurious and harmonic Emission at antenna port	FCC	47CFR2.1051, 47CFR24.238, 27.53	FCC	TIA-603-D: 2010	<input checked="" type="checkbox"/> Pass <input type="checkbox"/> N/A
Band Edge	FCC	47CFR2.1053, 47CFR24.238, 27.53	FCC	TIA-603-D: 2010	<input checked="" type="checkbox"/> Pass <input type="checkbox"/> N/A
Radiated spurious and harmonic emission	FCC	47CFR2.1051, 47CFR24.238, 27.53	FCC	TIA-603-D: 2010	<input checked="" type="checkbox"/> Pass <input type="checkbox"/> N/A
Frequency stability	FCC	47CFR2.1053, 47CFR24.135, 27.53	FCC	TIA-603-D: 2010	<input checked="" type="checkbox"/> Pass <input type="checkbox"/> N/A
Remark	<ol style="list-style-type: none"> All measurement uncertainties do not take into consideration for all presented test results. The applicant shall ensure frequency stability by showing that an emission is maintained within the band of operation under all normal operating conditions as specified in the user's manual. 				

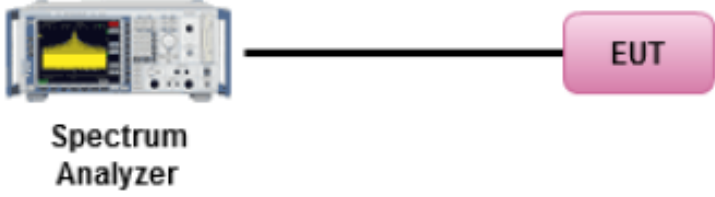
9 Measurement Uncertainty

Test Item	Frequency Range	Description	Uncertainty
Band Edge and Radiated Spurious Emissions	30MHz – 1GHz	Confidence level of approximately 95% (in the case where distributions are normal), with a coverage factor of 2 (for EUTs < 0.5m X 0.5m X 0.5m)	+5.6dB/-4.5dB
Band Edge and Radiated Spurious Emissions	1GHz – 40GHz	Confidence level of approximately 95% (in the case where distributions are normal), with a coverage factor of 2 (for EUTs < 0.5m X 0.5m X 0.5m)	+4.3dB/-4.1dB

10 Measurements, Examination and Derived Results

10.1 RF Output Power

Requirement(s):

Spec	Item	Requirement	Applicable
47CFR 22.913(a)	-	The maximum effective radiated power (ERP) of base transmitters and cellular repeaters must not exceed 500 Watts.	<input type="checkbox"/>
47CFR24.232	-	Mobile/portable stations are limited to 2 watts EIRP peak power and the equipment must employ means to limit the power to the minimum necessary for successful communications.	<input checked="" type="checkbox"/>
47CFR27.50	-	The maximum effective radiated power (ERP) of fixed and base station must not exceed 1000 Watts.	<input checked="" type="checkbox"/>
Test Setup	 <p>The diagram illustrates the test setup. On the left is a Spectrum Analyzer with a yellow signal trace on its screen. A black line representing a cable connects the Spectrum Analyzer to a pink rounded rectangle on the right labeled 'EUT' (Equipment Under Test).</p>		
Test Procedure	<ul style="list-style-type: none"> - EUT was set for low, mid, high channel with modulated mode and highest RF output power. - The spectrum analyzer was connected to the antenna terminal. 		
Test Date	03/03/2014 – 03/10/2014 03/03/2015 – 04/13/2015 09/24/2015 – 09/30/2015	Environmental condition	Temperature 22°C Relative Humidity 48% Atmospheric Pressure 1008mbar
Remark	NONE		
Result	<input checked="" type="checkbox"/> Pass <input type="checkbox"/> Fail		

Test Data Yes N/A

Test Plot Yes (See below) N/A

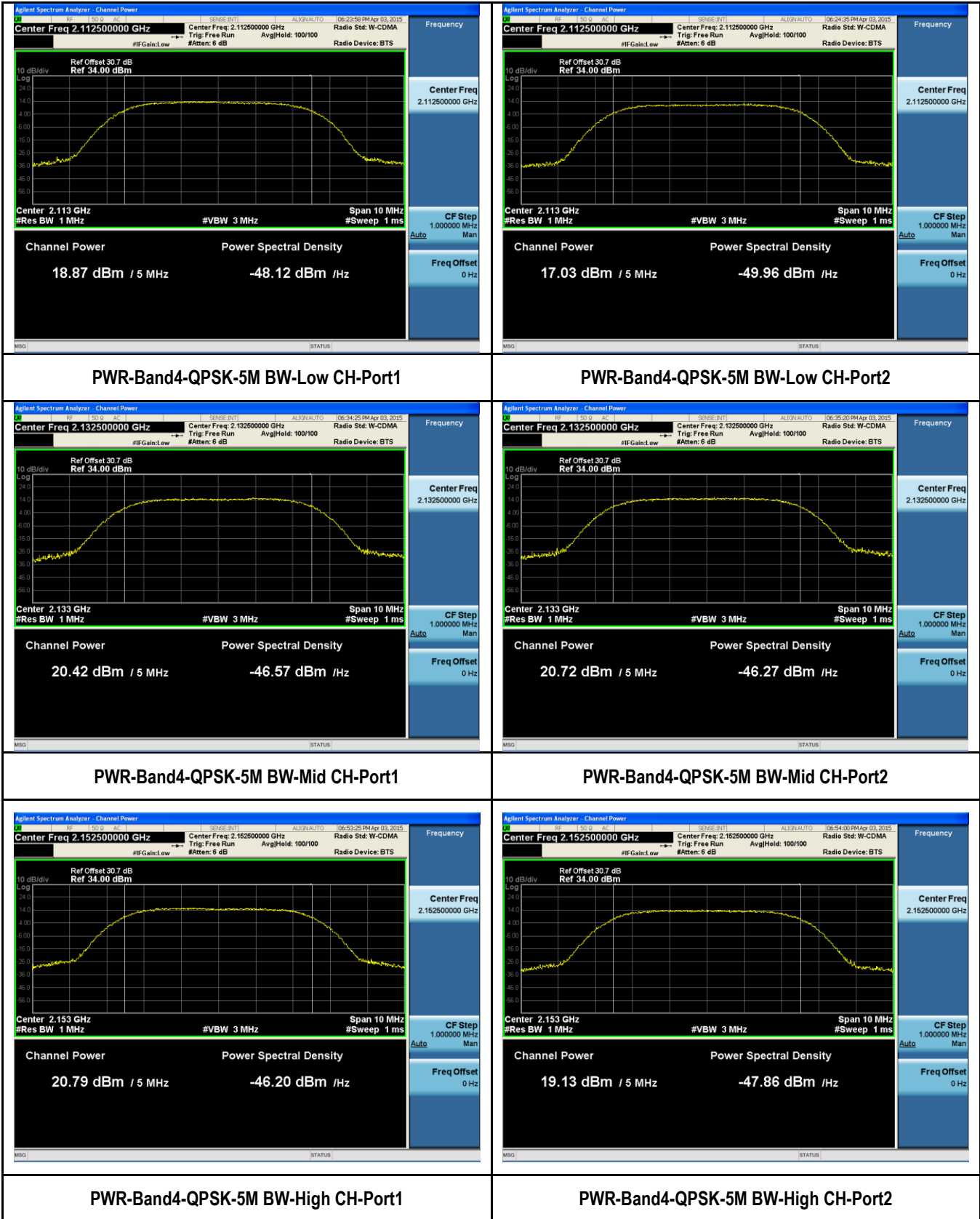
Test Data for LTE band 4

Type	Channel	Frequency (MHz)	Measured PW -Port 1(dBm)	Measured PW -Port 2(dBm)	Combined Power (dBm)	Antenna Gain (dBi)	E.I.R.P (dBm)
5MHz BW, QPSK	Low	2112.5	18.87	17.03	21.06	3	24.06
	Mid	2132.5	20.42	20.72	23.58	3	26.58
	High	2152.5	20.79	19.13	23.05	3	26.05
5MHz BW, 64QAM	Low	2112.5	18.81	17.07	21.04	3	24.04
	Mid	2132.5	20.48	20.81	23.66	3	26.66
	High	2152.5	20.67	19.18	23.00	3	26.00
10MHz BW, QPSK	Low	2115	20.58	20.69	23.65	3	26.65
	Mid	2132	20.87	21.09	23.99	3	26.99
	High	2150	21.23	20.97	24.11	3	27.11
10MHz BW, 64QAM	Low	2115	21.18	21.25	24.23	3	27.23
	Mid	2132	21.06	21.19	24.14	3	27.14
	High	2150	20.97	20.69	23.84	3	26.84
15MHz BW, QPSK	Low	2117.5	19.56	18.83	22.22	3	25.22
	Mid	2132.5	21.11	21.25	24.19	3	27.19
	High	2147.5	22.14	20.49	24.40	3	27.40
15MHz BW, 64QAM	Low	2117.5	19.47	18.71	22.12	3	25.12
	Mid	2132.5	21.13	21.29	24.22	3	27.22
	High	2147.5	22.13	20.49	24.40	3	27.40
20MHz BW, QPSK	Low	2120	20.81	21.13	23.98	3	26.98
	Mid	2132	21.27	21.40	24.35	3	27.35
	High	2145	21.00	20.61	23.82	3	26.82
20MHz BW, 64QAM	Low	2120	20.93	21.26	24.11	3	27.11
	Mid	2132	20.87	21.01	23.95	3	26.95
	High	2145	21.06	20.62	23.86	3	26.86

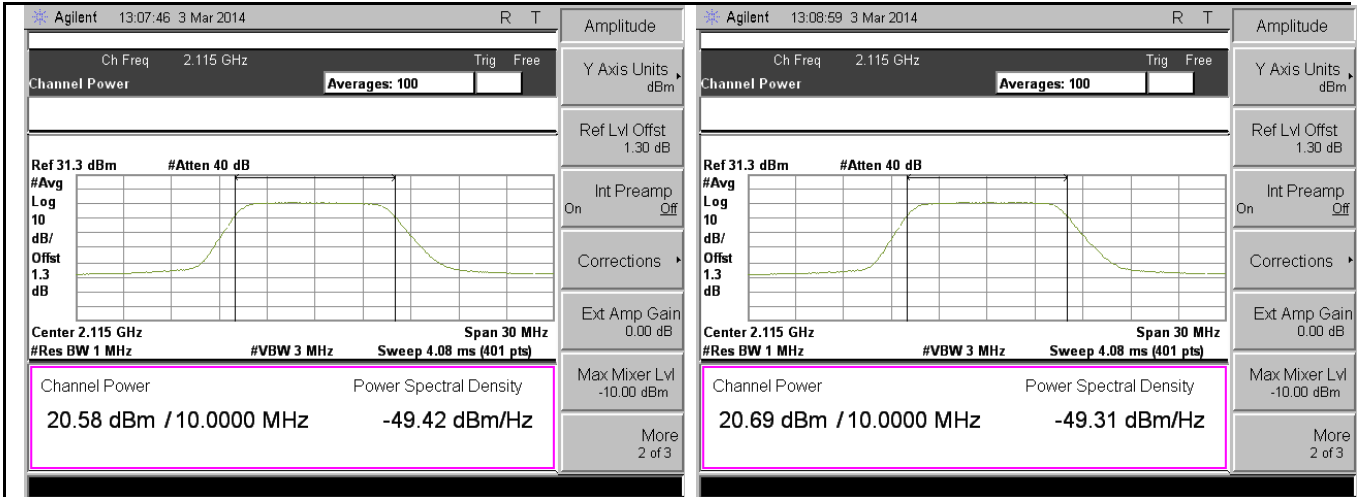
Test Data for LTE band 2

Type	Channel	Frequency (MHz)	Measured PW -Port 1(dBm)	Measured PW -Port 2(dBm)	Combined Power (dBm)	Antenna Gain (dBi)	E.I.R.P (dBm)
5MHz BW, QPSK	Low	1932.5	21.25	21.23	24.25	3	27.25
	Mid	1960.0	20.88	20.89	23.90	3	26.90
	High	1987.5	20.82	20.78	23.81	3	26.81
5MHz BW, 64QAM	Low	1932.5	20.80	20.84	23.83	3	26.83
	Mid	1960.0	20.43	20.45	23.45	3	26.45
	High	1987.5	20.78	20.84	23.82	3	26.82
10MHz BW, QPSK	Low	1935.0	21.52	21.63	24.59	3	27.59
	Mid	1960.0	21.06	21.02	24.05	3	27.05
	High	1985.0	20.70	20.71	23.72	3	26.72
10MHz BW, 64QAM	Low	1935.0	21.05	21.05	24.06	3	27.06
	Mid	1960.0	20.52	20.54	23.54	3	26.54
	High	1985.0	20.10	20.07	23.10	3	26.10
15MHz BW, QPSK	Low	1937.5	21.56	21.55	24.57	3	27.57
	Mid	1960.0	20.88	20.87	23.89	3	26.89
	High	1982.5	20.33	20.30	23.33	3	26.33
15MHz BW, 64QAM	Low	1937.5	21.07	21.05	24.07	3	27.07
	Mid	1960.0	20.39	20.38	23.40	3	26.40
	High	1982.5	20.82	20.84	23.84	3	26.84
20MHz BW, QPSK	Low	1940.0	20.93	20.84	23.90	3	26.90
	Mid	1960.0	21.07	21.13	24.11	3	27.11
	High	1980.0	20.72	20.70	23.72	3	26.72
20MHz BW, 64QAM	Low	1940.0	21.27	21.28	24.29	3	27.29
	Mid	1960.0	21.63	21.58	24.62	3	27.62
	High	1980.0	21.25	21.19	24.23	3	27.23

Test Plots for Band 4-QPSK-5MHz

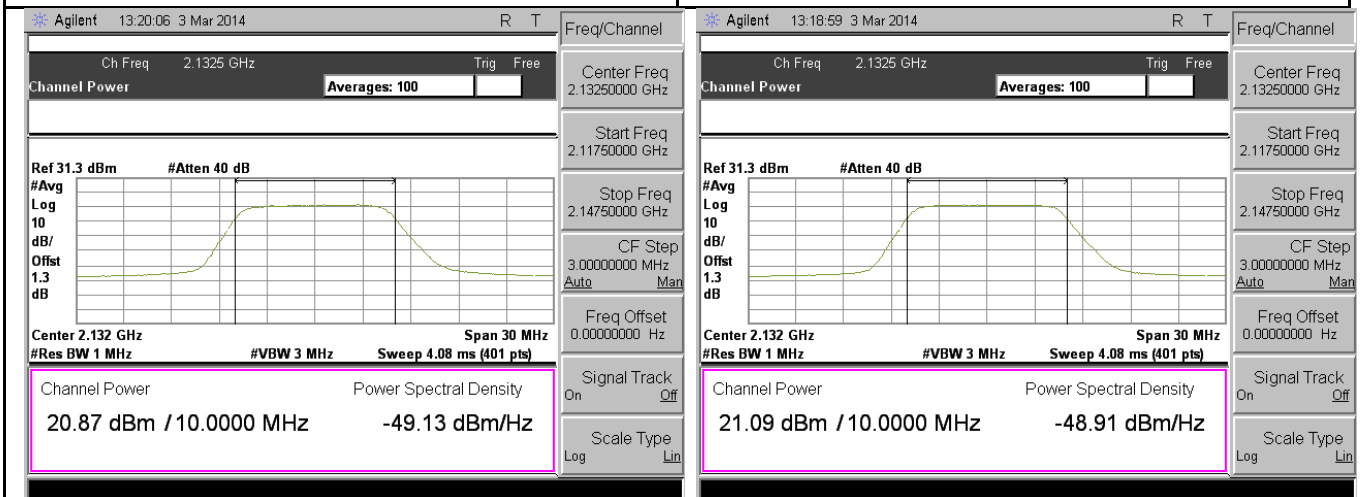


Test Plots for Band 4-QPSK-10MHz



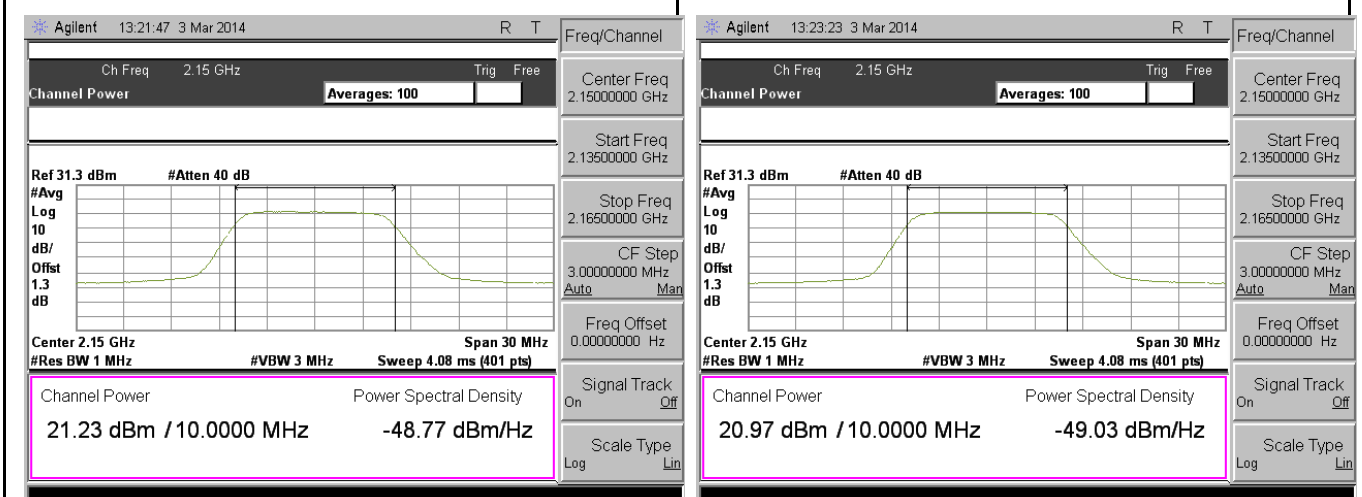
PWR-Band4-QPSK-10M BW-Low CH-Port1

PWR-Band4-QPSK-10M BW-Low CH-Port2



PWR-Band4-QPSK-10M BW-Mid CH-Port1

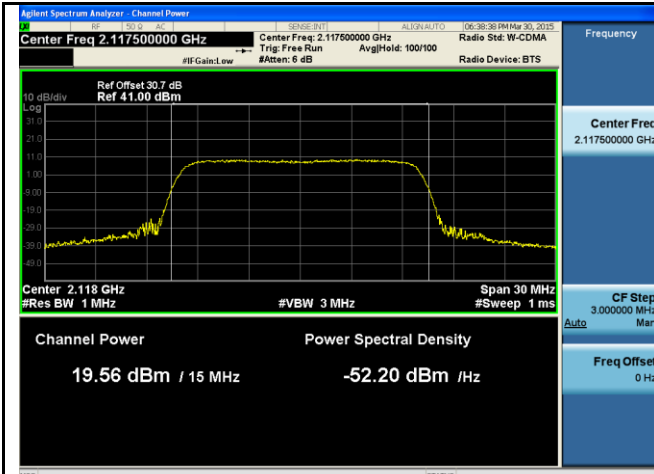
PWR-Band4-QPSK-10M BW-Mid CH-Port2



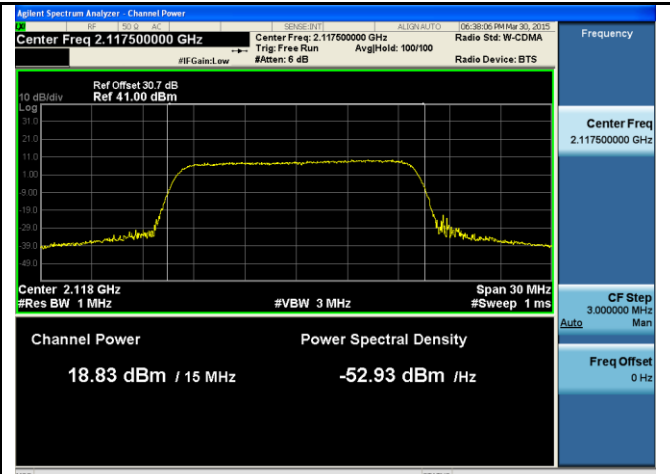
PWR-Band4-QPSK-10M BW-High CH-Port1

PWR-Band4-QPSK-10M BW-High CH-Port2

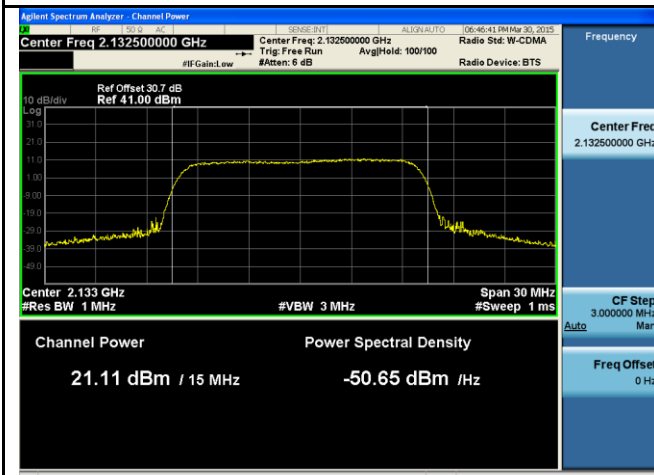
Test Plots for Band 4-QPSK-15MHz



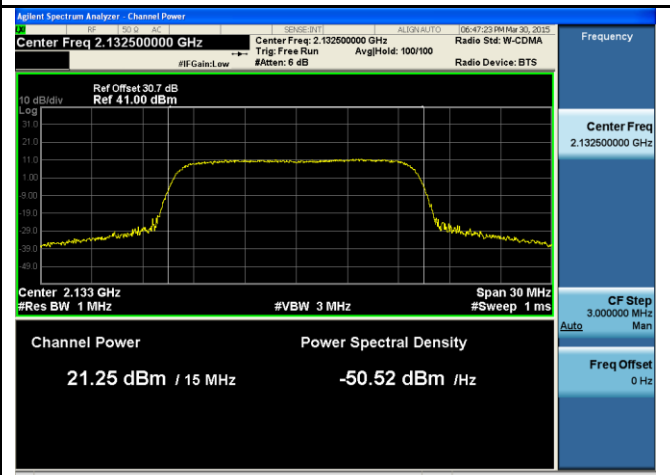
PWR-Band4-QPSK-15M BW-Low CH-Port1



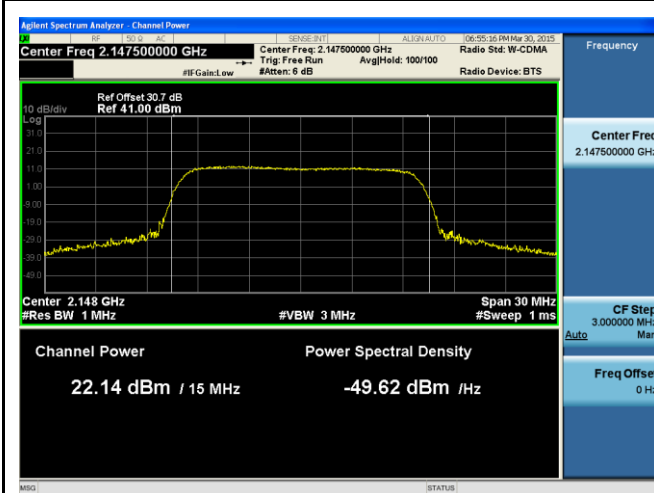
PWR-Band4-QPSK-15M BW-Low CH-Port2



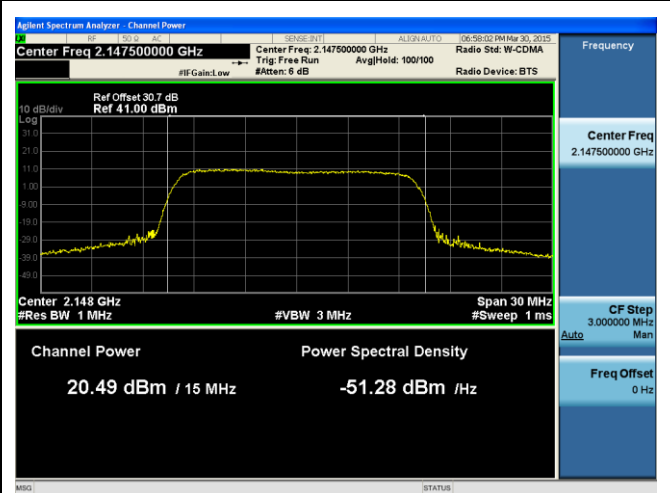
PWR-Band4-QPSK-15M BW-Mid CH-Port1



PWR-Band4-QPSK-15M BW-Mid CH-Port2

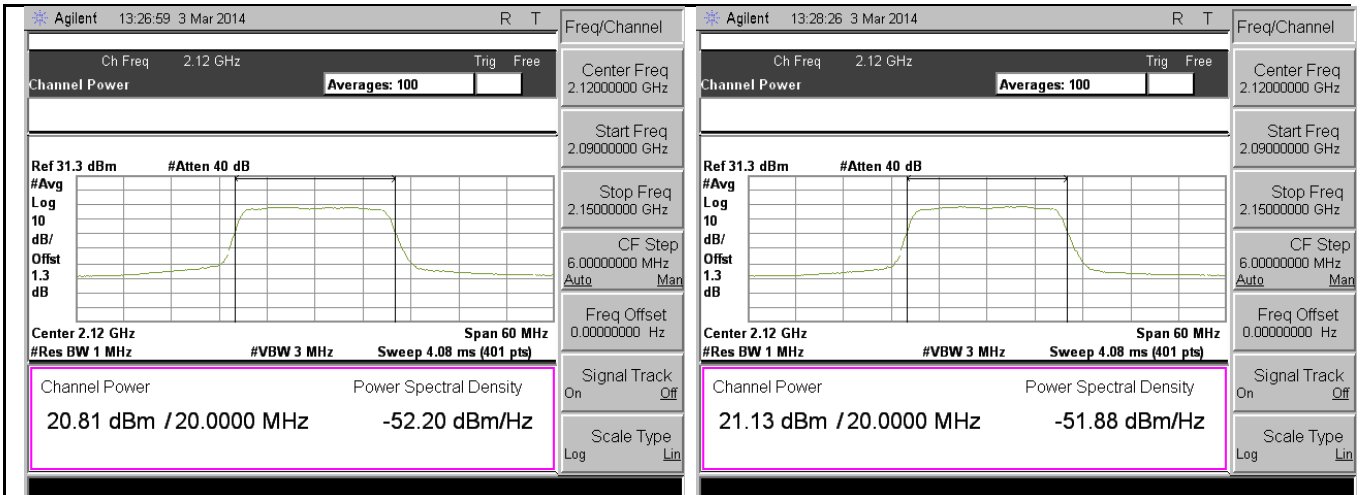


PWR-Band4-QPSK-15M BW-High CH-Port1



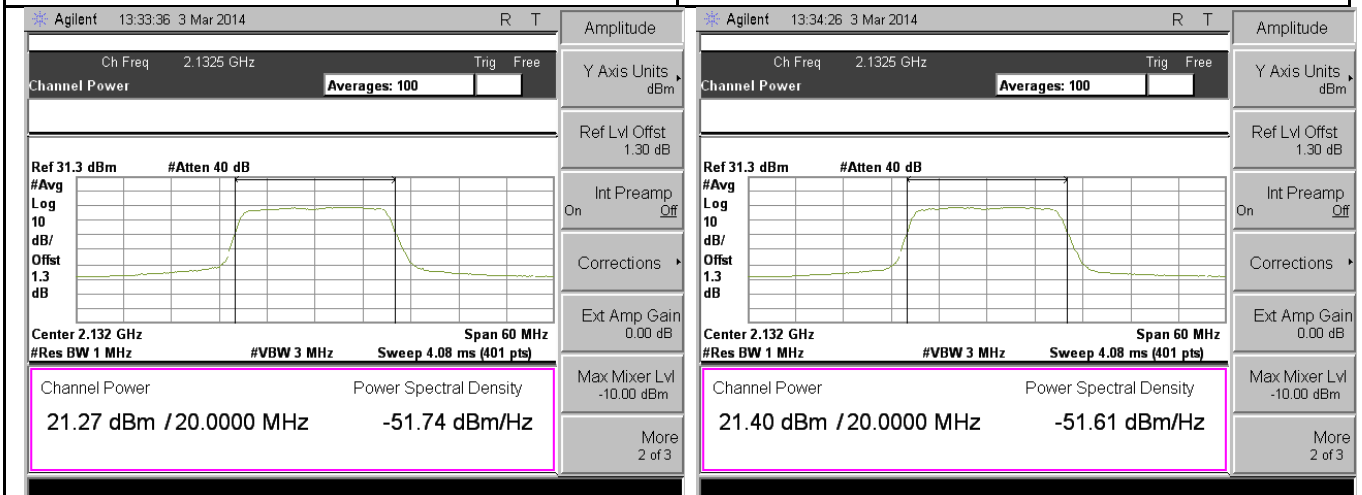
PWR-Band4-QPSK-15M BW-High CH-Port2

Test Plots for Band 4-QPSK-20MHz



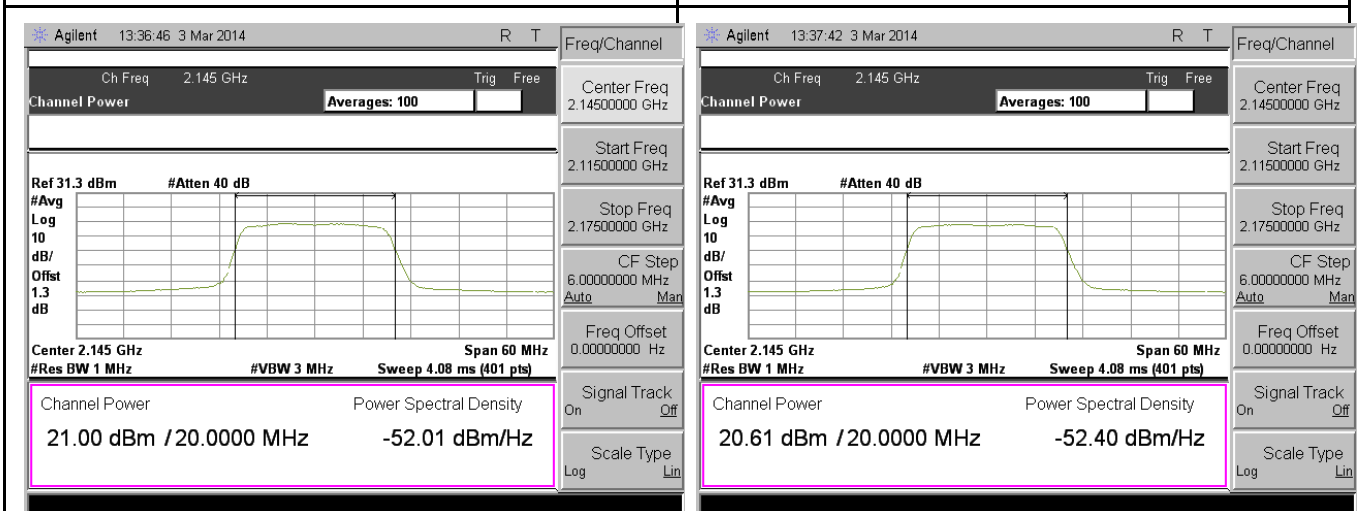
PWR-Band4-QPSK-20M BW-Low CH-Port1

PWR-Band4-QPSK-20M BW-Low CH-Port2



PWR-Band4-QPSK-20M BW-Mid CH-Port1

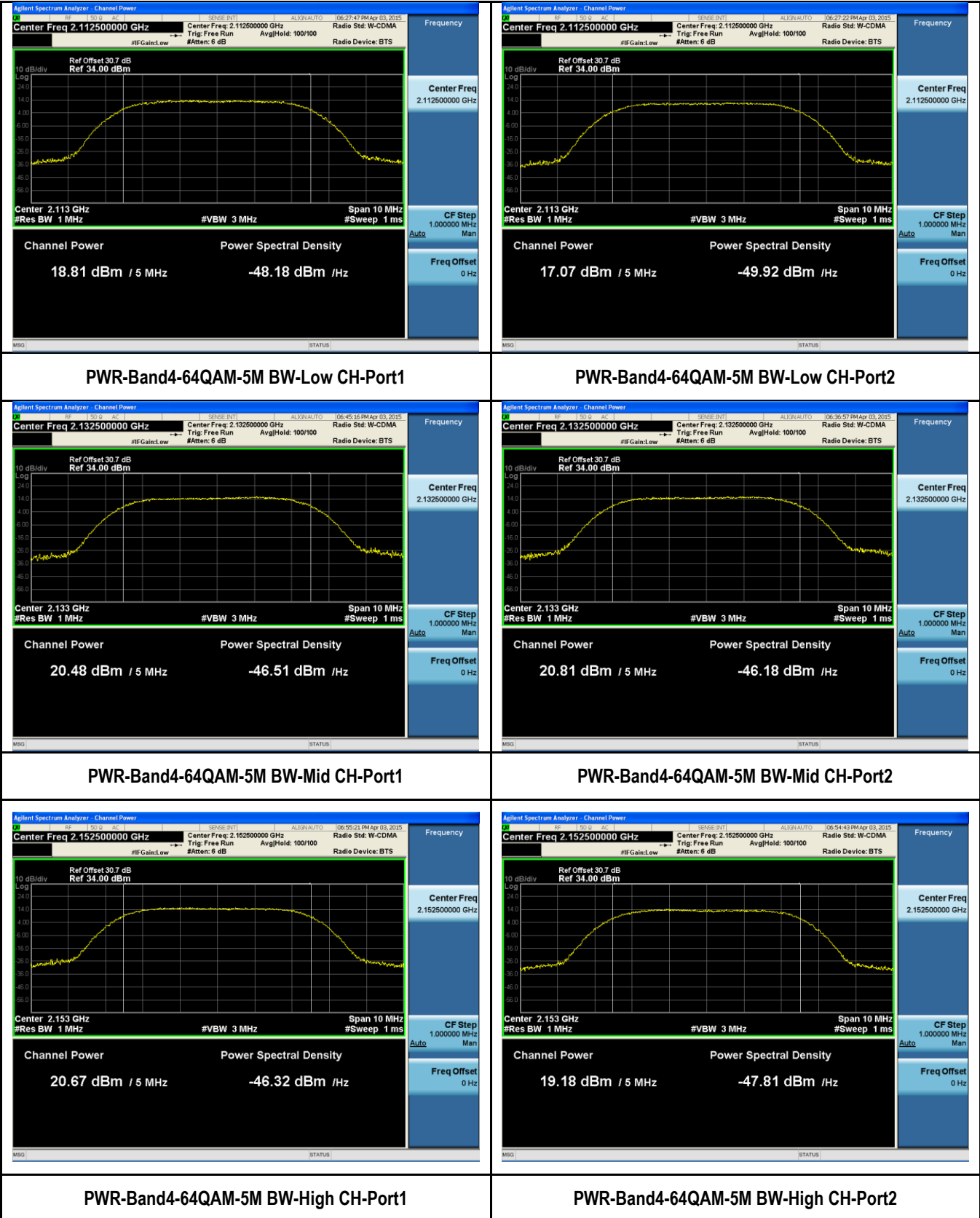
PWR-Band4-QPSK-20M BW-Mid CH-Port2



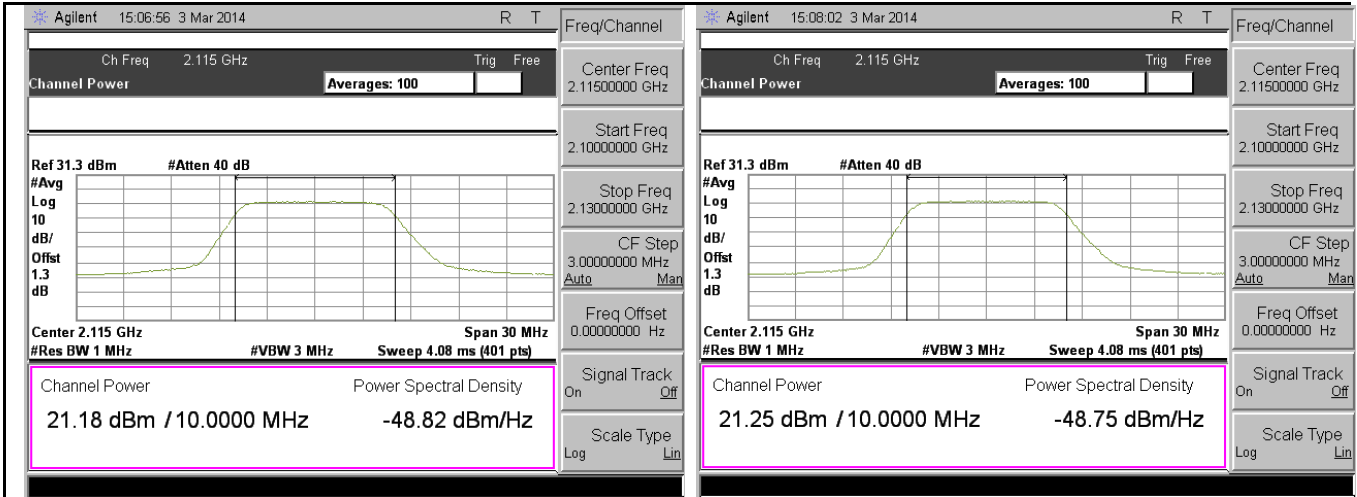
PWR-Band4-QPSK-20M BW-High CH-Port1

PWR-Band4-QPSK-20M BW-High CH-Port2

Test Plots for Band 4-64QAM-5MHz

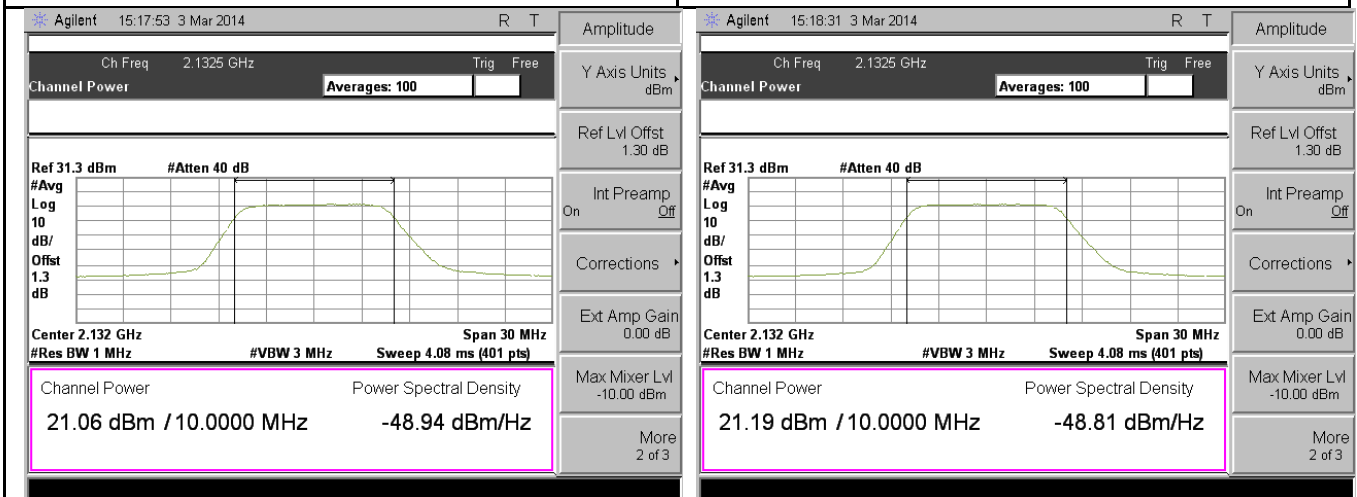


Test Plots for Band 4-64QAM-10MHz



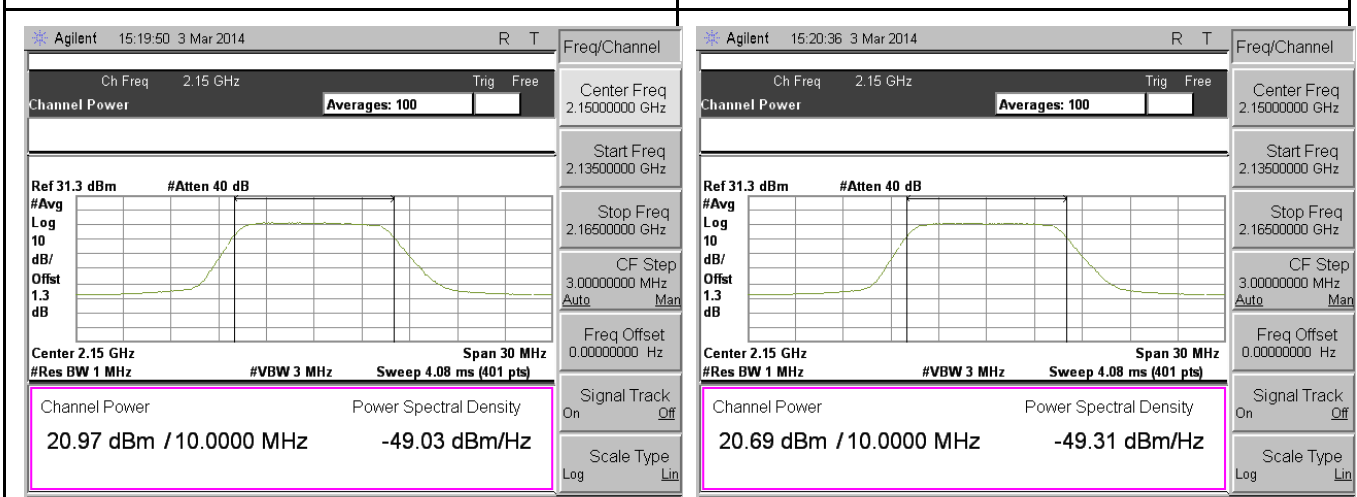
PWR-Band4-64QAM-10M BW-Low CH-Port1

PWR-Band4-64QAM-10M BW-Low CH-Port2



PWR-Band4-64QAM-10M BW-Mid CH-Port1

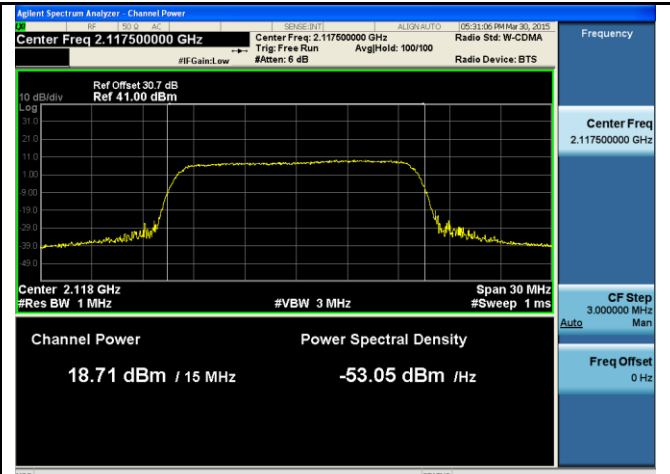
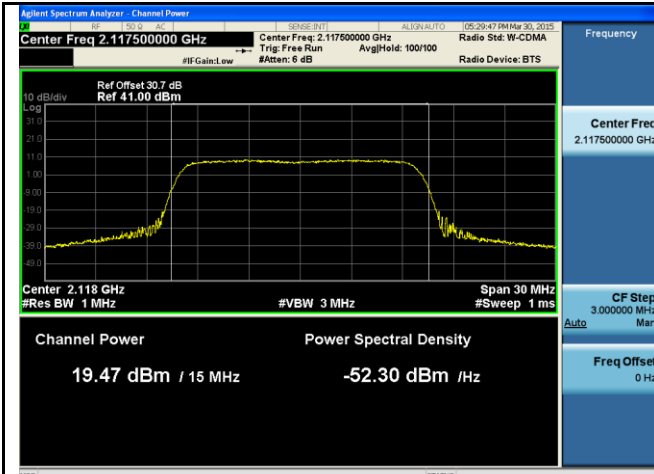
PWR-Band4-64QAM-10M BW-Mid CH-Port2



PWR-Band4-64QAM-10M BW-High CH-Port1

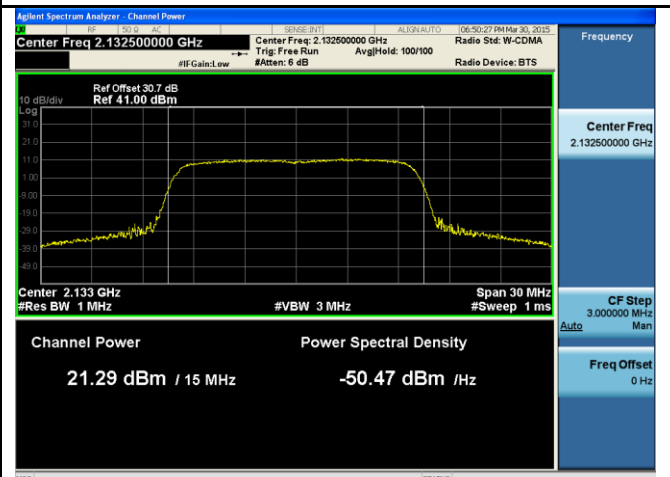
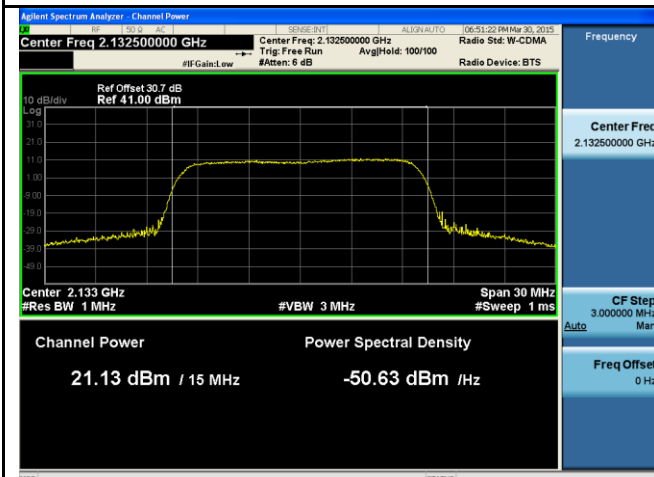
PWR-Band4-64QAM-10M BW-High CH-Port2

Test Plots for Band 4-64QAM-15MHz



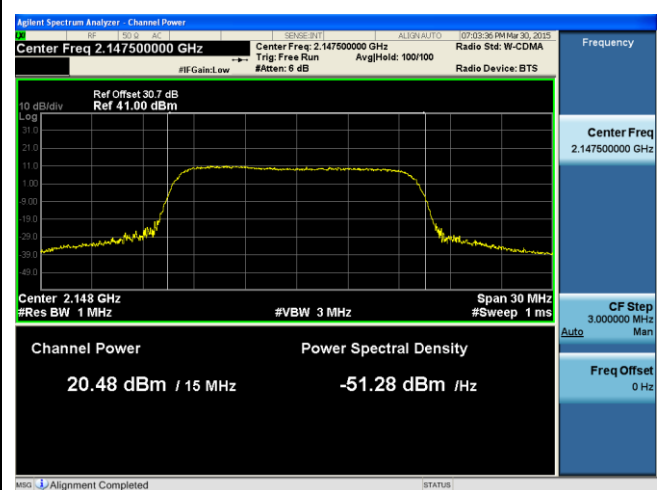
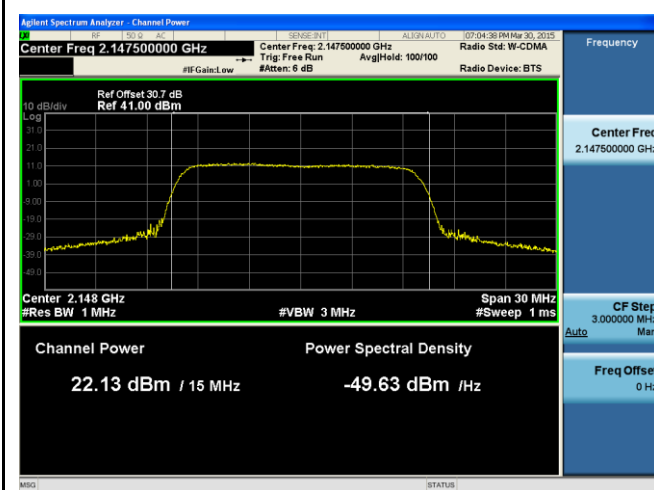
PWR-Band4-64QAM-15M BW-Low CH-Port1

PWR-Band4-64QAM-15M BW-Low CH-Port2



PWR-Band4-64QAM-15M BW-Mid CH-Port1

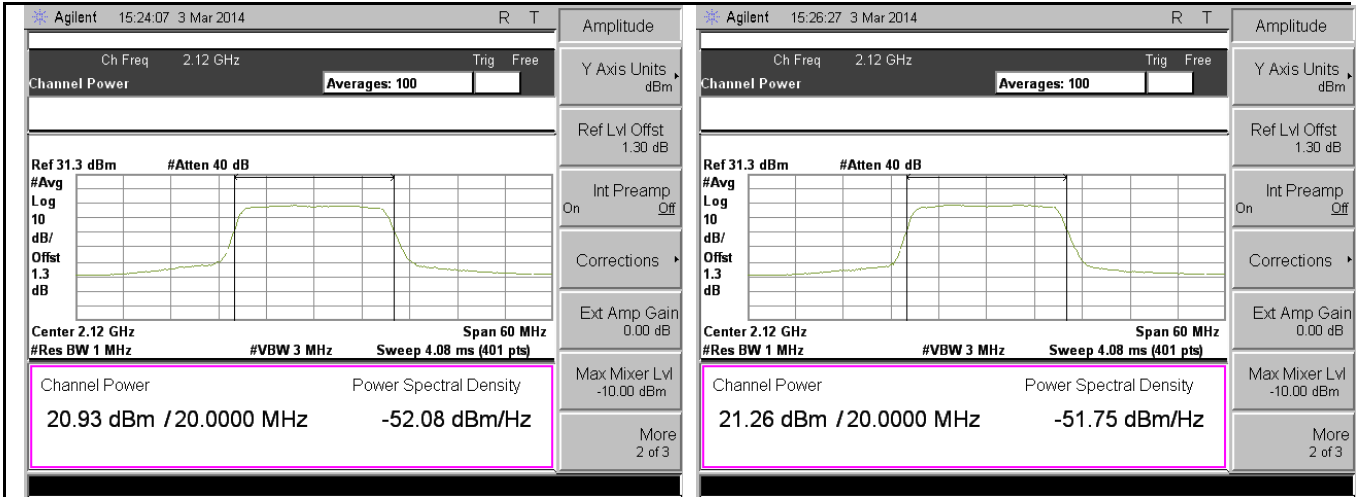
PWR-Band4-64QAM-15M BW-Mid CH-Port2



PWR-Band4-64QAM-15M BW-High CH-Port1

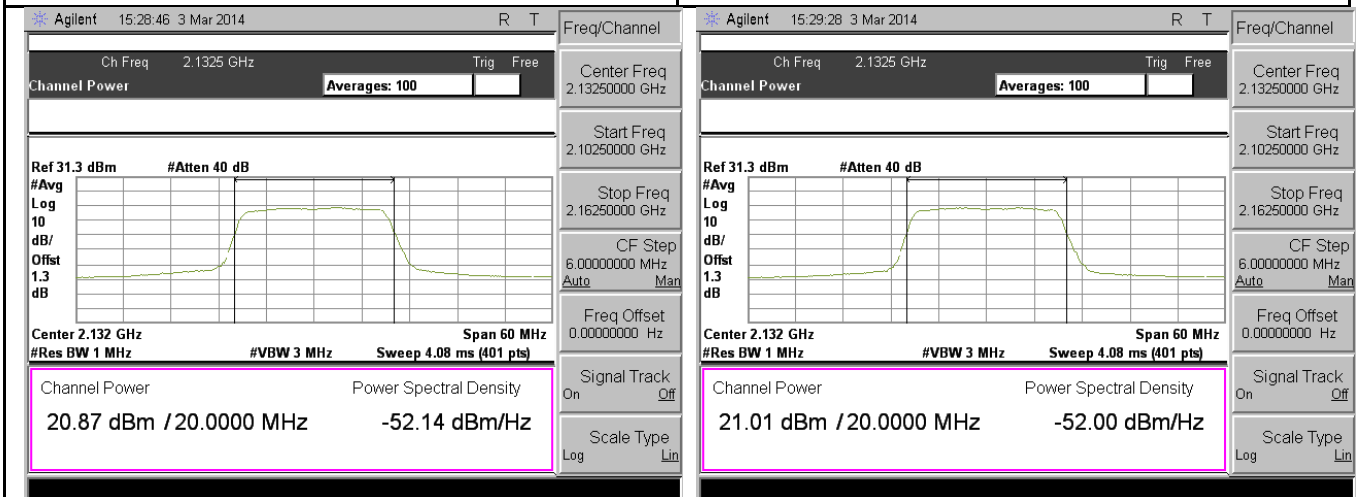
PWR-Band4-64QAM-15M BW-High CH-Port2

Test Plots for Band 4-64QAM-20MHz



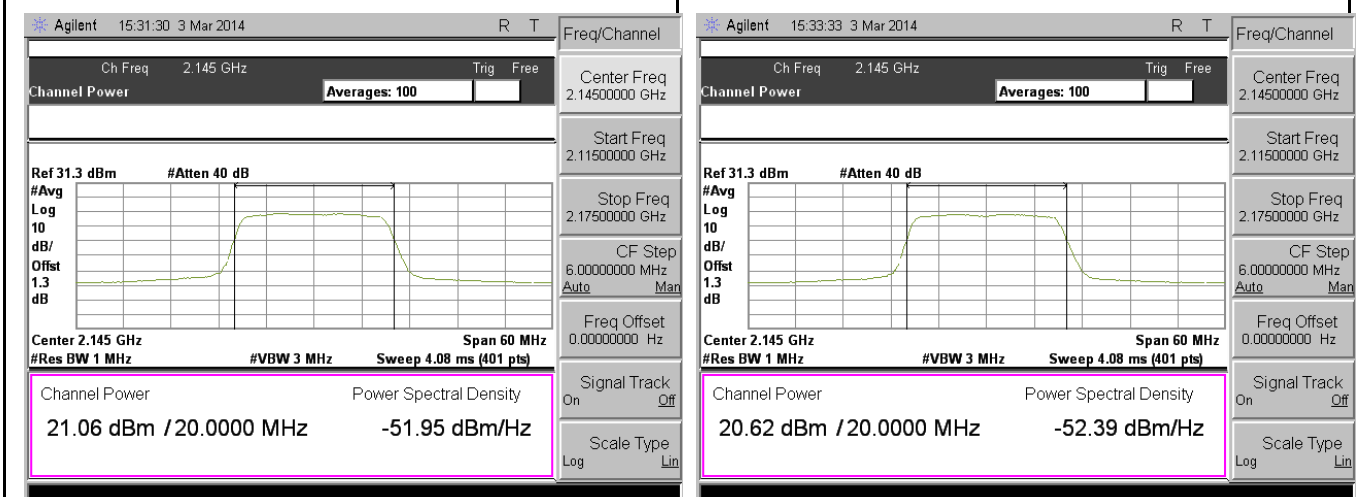
PWR-Band4-64QAM-20M BW-Low CH-Port1

PWR-Band4-64QAM-20M BW-Low CH-Port2



PWR-Band4-64QAM-20M BW-Mid CH-Port1

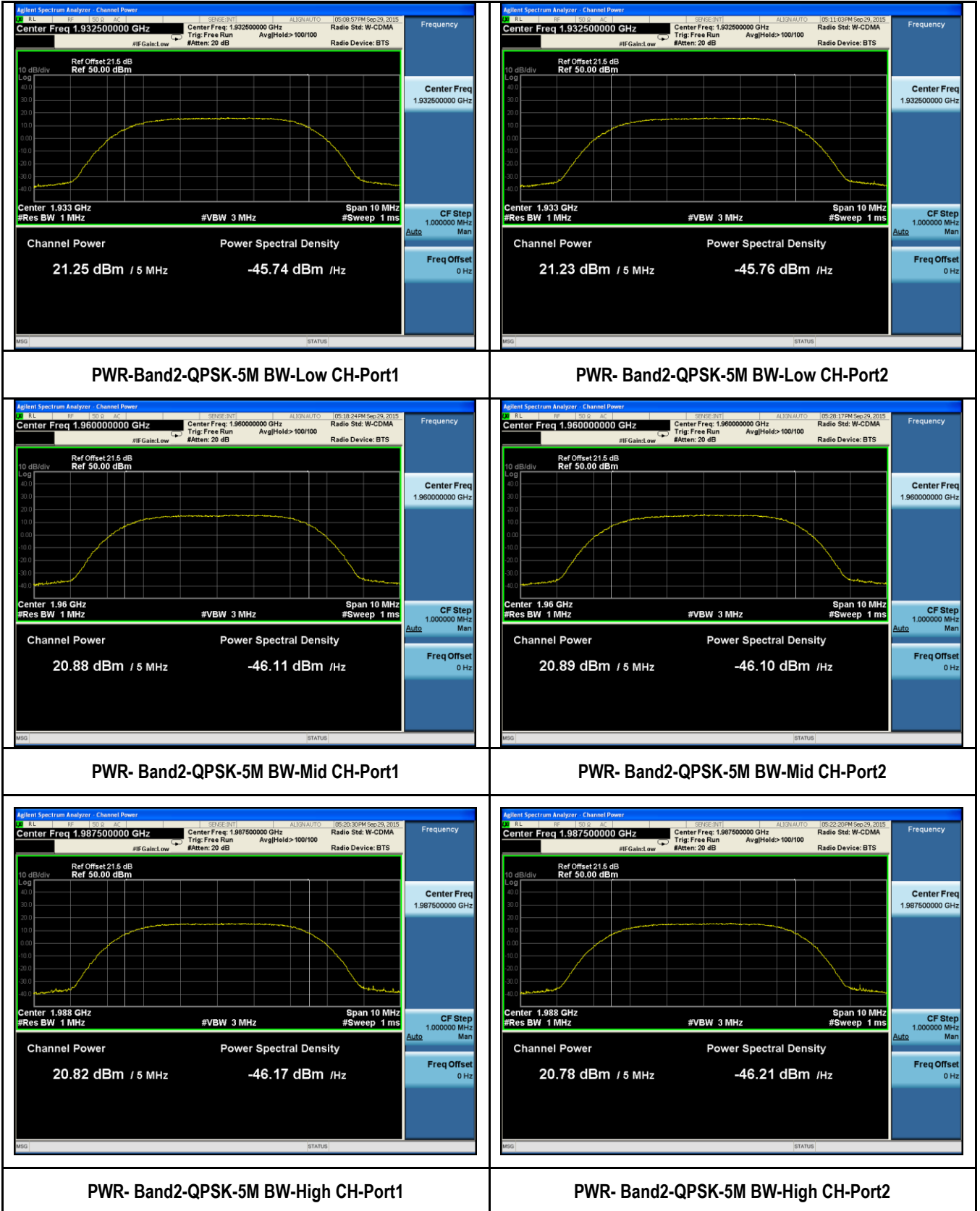
PWR-Band4-64QAM-20M BW-Mid CH-Port2



PWR-Band4-64QAM-20M BW-High CH-Port1

PWR-Band4-64QAM-20M BW-High CH-Port2

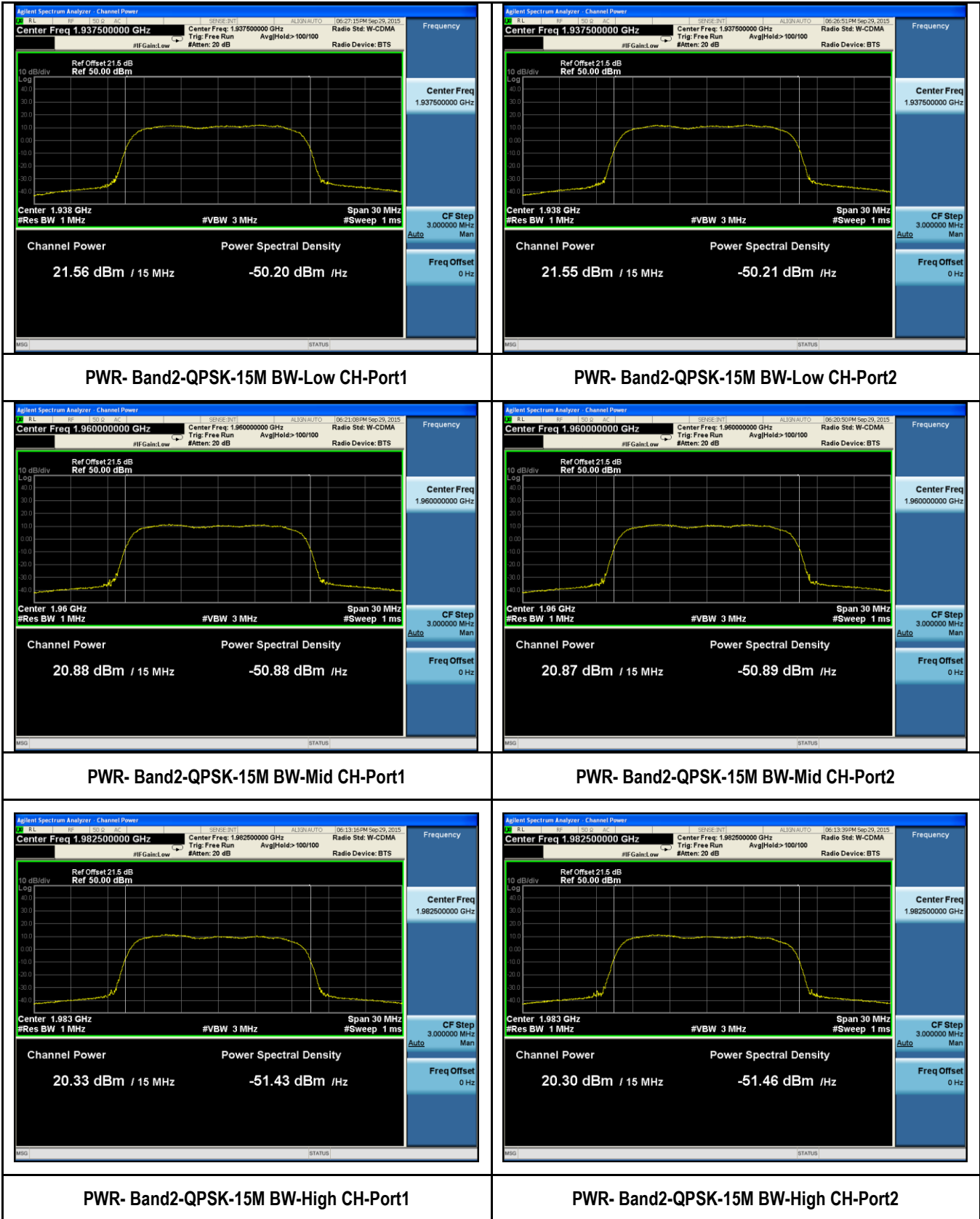
Test Plots for Band 2-QPSK-5MHz



Test Plots for Band 2-QPSK-10MHz



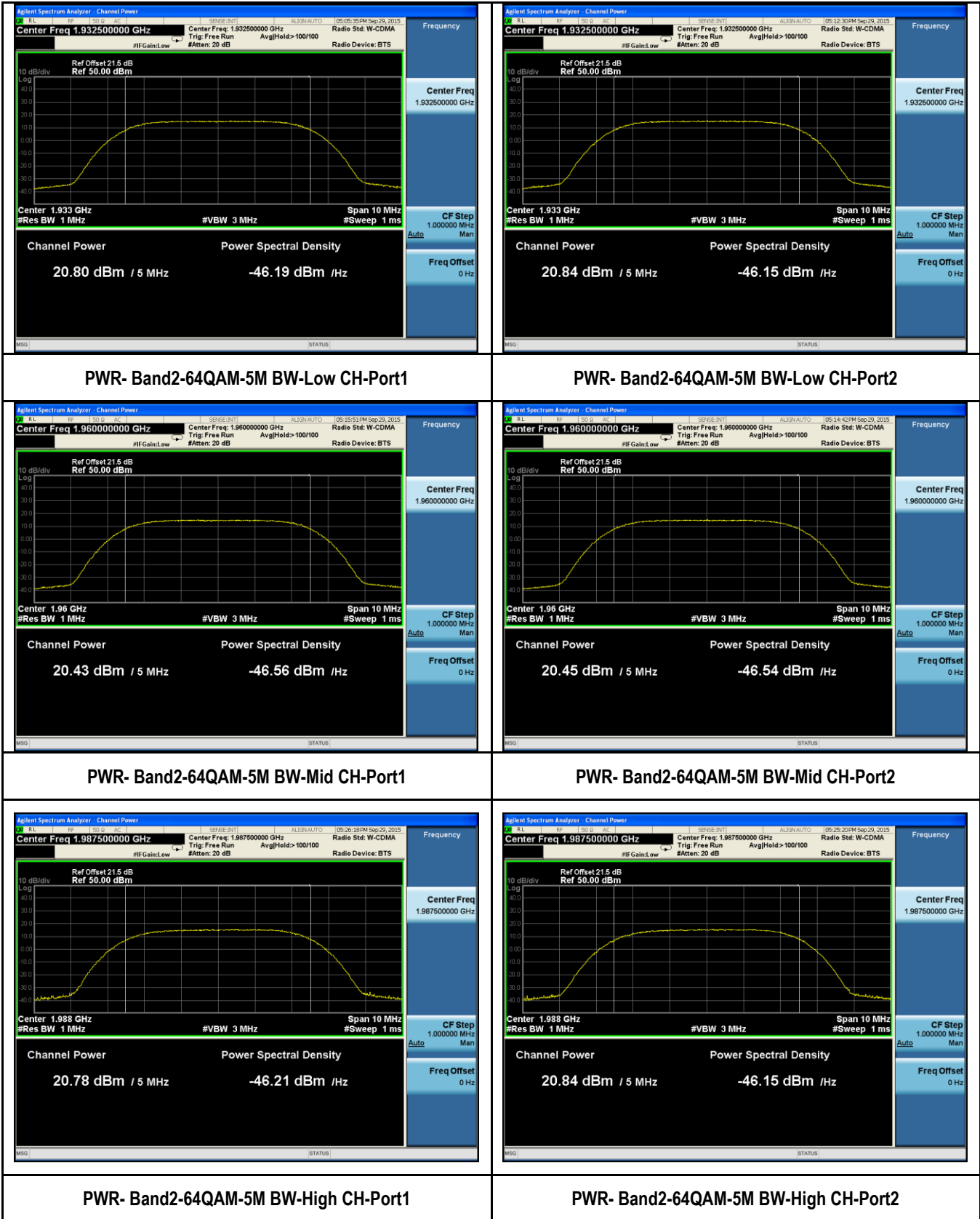
Test Plots for Band 2-QPSK-15MHz



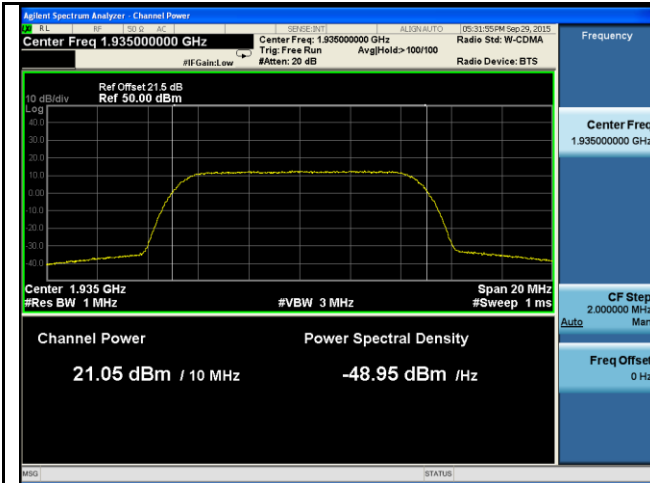
Test Plots for Band 2-QPSK-20MHz



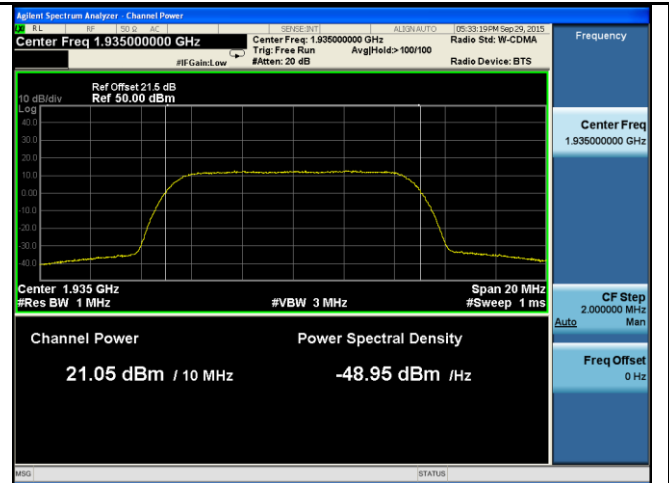
Test Plots for Band 2-64QAM-5MHz



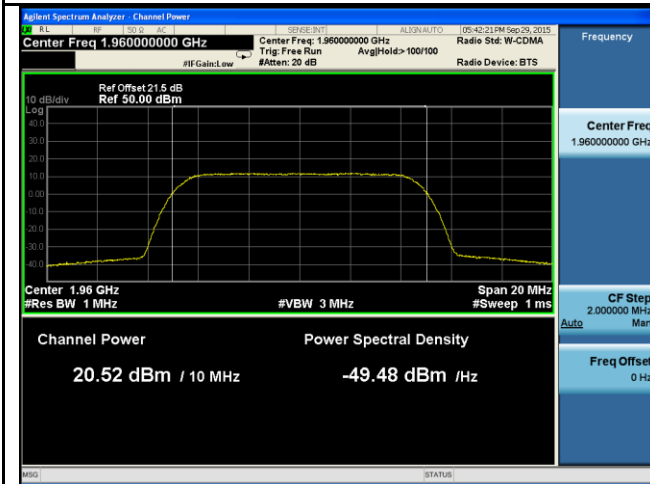
Test Plots for Band 2-64QAM-10MHz



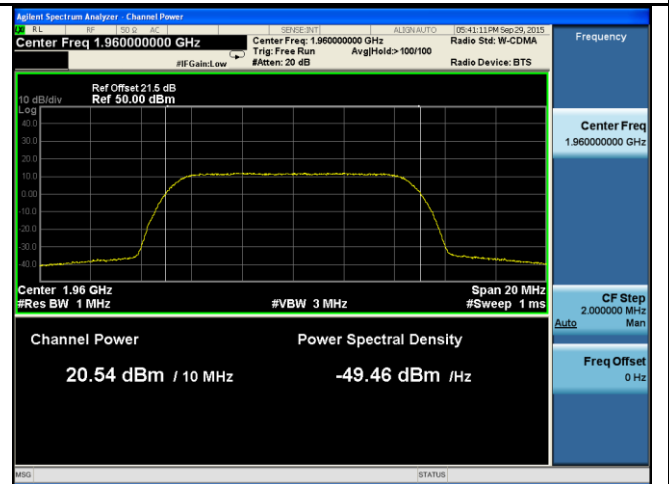
PWR- Band2-64QAM-10M BW-Low CH-Port1



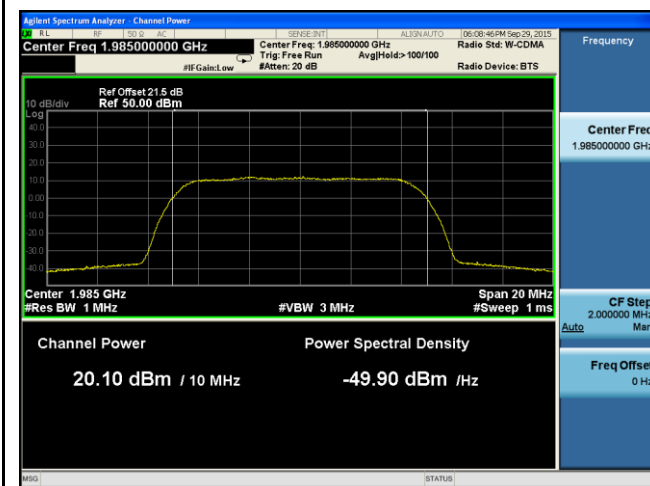
PWR- Band2-64QAM-10M BW-Low CH-Port2



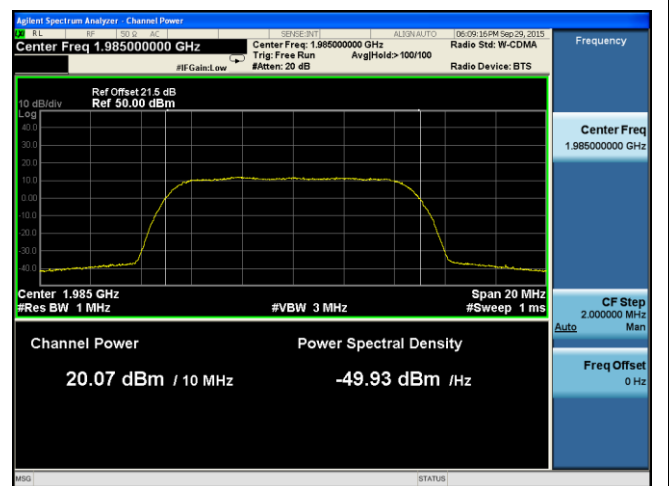
PWR- Band2-64QAM-10M BW-Mid CH-Port1



PWR- Band2-64QAM-10M BW-Mid CH-Port2



PWR- Band2-64QAM-10M BW-High CH-Port1



PWR- Band2-64QAM-10M BW-High CH-Port2