

Size: mm, 印在正反两面, 中间折

Product Specification for 2.4G Wireless Mouse

Wireless Frequency:	2402MHz-2480MHz
Work Frequency:	64 hopping
Rated work voltage:	1.5V
Rated work electric current:	15mA
Battery:	AA×1PCS
Locomotive perceptive system:	Laser
Resolution:	Default CPI value(800-1600)
USB Port version	USB1.1/2.0

*The spec above decription, we will not inform you if any changes.

Warning:

Any change or modification not expressly approved by the party responsible for compliance could avoid the user's authority to operate the equipment

Note:

This equipment has been tested and found to comply with the limits for a Class B digital device, pursuant to part 15 of the FCC rules. This limits are designed to provide reasonable protection against harmful interference in a residential installation. This equipment generates radio frequency, if not installed and used according to the instructions, it may cause harmful interference to radio communications. However, there is no guarantee that interference will not occur in a particular installation. If this equipment does cause harmful interference to radio or television reception, which can be determined by turning the equipment off and on, the user is encouraged to try to correct the interference by one or more of the following measure,

* Reorient or relocate the receiving antenna

* Increase the separation between the equipment and receiver

* Connect the equipment into an outlet on a circuit different from that to which the receiver is connected

*Consult with the dealer or an experienced radio/TV technician for help

This device complies with Part 15 of the FCC Rules. Operation is subject to the following two conditions: (1) This device may not cause harmful interference, and (2) this device must accept any interference received, including interference that may cause undesired operation.

This device and its antenna(s) must not be co-located or operating in conjunction with any other antenna or transmitter.

LM-001 2.4G wireless optical mouse

Feature:

- 2.4G frequency , digital cordless with distance up to ten meters
- PAN3204 chipset , high-precision and high- stabilization
- Default CPI value(800-1600)
- Low power remind function , change the battery in time

Operation

- 1 , Take the mouse and receiver from the packing. Referring to pictue one.
- 2 , Open the battery cover , put into 1 AA battery (Pay attention to the battery polarity) Referring to pictue two.



- 3 , Pull the key to ON. The led will flash a few seconds. Referring to pictue three.
- 4 , Plug the mini wireless receiver (Nano) into the USB port. Referring to pictue four
- 5 , Now you can use it and enjoy it.

Exclusive Function:

- 1 , Low battery remind function

When you using the mouse, if the low-power indication light flickers, it shows the batteries are drains up to empty, then you should change a new battery at once

- Don't use old battery.Only valid for alkaline dry battery , other battery will effect the use of mouse.

- 2 , Sleeping function

The mouse will power off by itself if you don't use it for about 8 minutes Just press any key or scroll the wheel to wake up the mouse when it is sleeping. Please turn off it when you go outside or don't use it for a long time.

- Turn off it if you don't use it for a long time,it will avoid to

caner accessories of mouse.

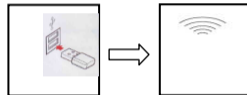
3. CPI adjusting function
Default CPI value is 1200.

- 4 , Built-in receiver

It has a super Nano receiver , you can put it into the USB connect of PC or notebook, it will not infect your computer at all. If you just want to take the mouse outside, you can also put it into the bottom of the mouse.

Reset:

It has the ID memory function automatical, please reconnect ID if you lost the memory code. High magnetic field and libration will lead to these two distinguish code disappear. you need reset it.



- 1 , Reconnect the receiver
- 2 , Press and hold on to and the scroll wheel of the mouse together for about 15 seconds .,
- 3 , You are now ready to the wireless world.

Remark:

- This mouse uses laser light as transfer checking, it comply with correlative safe prescript, please do not look into the bottom of the mouse directly.
- Regards to 2.4GHZ wireless data transfer, the distance is 10 meters. The distance will be less if there are obstacles or blockage.
- The unsmooth or anti-optical surfaces will infect the function.