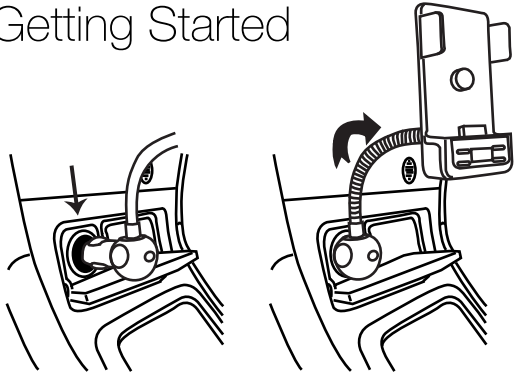


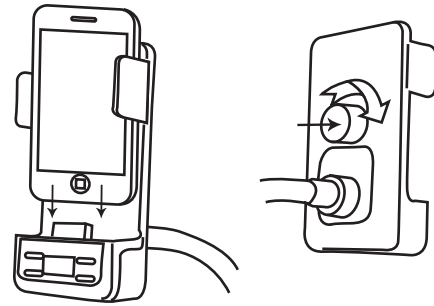
Congratulations on purchasing the Duracell Gooseneck FM Transmitter and Charging Dock for iPod & iPhone

1. Getting Started



- Plug the cigarette lighter adapter at the bottom of the gooseneck into an available cigarette lighter port and adjust the gooseneck to a comfortable position.

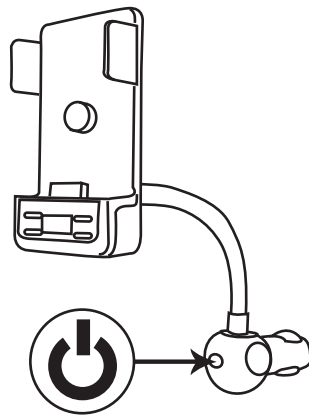
2. Attaching your iPod/iPhone



- Attach the iPod or iPhone onto the connector located on the dock and if necessary turn the knob located on the back of the dock in or out to give support as needed for the iPod or iPhone and press sides for support.

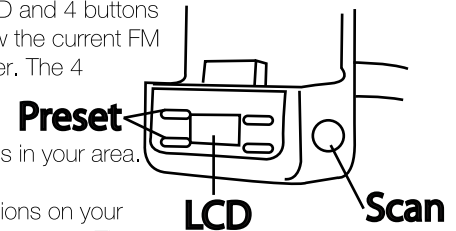
3. Charging your iPod/iPhone. (power on/off)

- Turn on the dock by pressing the on/off button located at the bottom of the gooseneck. When turned on the iPod or iPhone should show that it is charging.



4. Scanning & Setting FM Presets.

- The FM transmitter has 1 LCD and 4 buttons at the base. The LCD will show the current FM frequency set on the transmitter. The 4 buttons at the base allow you to preset 4 different frequencies for quick selections in your area.

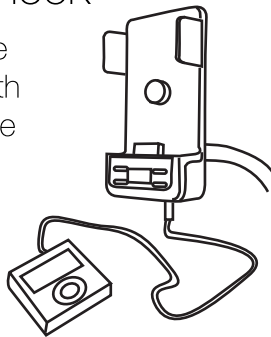


For example, scan the FM stations on your radio until you find an empty frequency. Then set the FM transmitter to the same channel by pressing the button on the left side of the base. The LCD will display the frequency as you press the button. When the LCD displays the same frequency as the radio, press the #1 button on the front of the base. Now the transmitter is preset to that frequency every time you press the #1 button. Repeat this step for the #3 button and then follow the same procedure on the right side for buttons #2 & #4.

- The radio does not have to be turned on to charge your iPod or iPhone.

5. Playing other music devices through your Gooseneck

- To listen to another audio device simply plug the included cable with 3.5 mm Jack at both ends into the Gooseneck FM Transmitter using the 3.5 mm outlet on the bottom of the FM Transmitter as seen here. Once plugged in, your device should begin playing through your car speakers.



- This DURACELL® product will work on all available empty FM frequencies.

- See back for Fuse replacement instructions.

For technical support please email us at techsupport@duracellchargers.com or call us at 212 883-8838

iPod, iPhone, Touch, Nano, are registered trademarks of Apple inc.

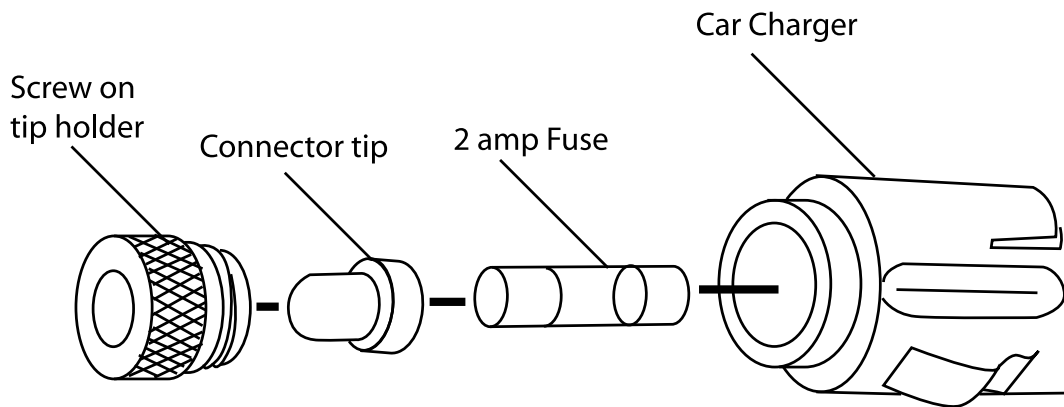
DURACELL is a registered trademark of The Gillette Company, used under license. All rights reserved

© 2013 DURACELL, a division of The Gillette Company, Bethel, CT 06801

Manufactured by ESI Cases & Accessories 240 Madison Avenue, New York, NY 10016

CAUTION: FOR CONTINUED PROTECTION AGAINST THE RISK OF FIRE, REPLACE ONLY WITH SAME TYPE (2 Amp 250V) AND RATINGS OF THE FUSE.

1. To replace the fuse, carefully unscrew the tip that plugs into the cigarette lighter being careful not to drop any parts
2. Remove 2 amp 250v fuse and replace with new 2 amp 250v fuse (both ends of the fuse are the same so it will go either way).
3. Carefully place tip exactly the way it was removed and screw on firmly, To prevent stripping the threads do not over-tighten.
4. Press tip to make sure it moves in and out.
5. Now you are ready to use again.



Special Notes:

The iPhone may show a message saying "This accessory is not made to work with iPhone"
If this occurs you can still connect the iPhone to the accessory not specifically made for it. The iPhone may ask if you want to turn on airplane mode, this is to eliminate radio interference from cellular signals coming from the iPhone. You may use iPhone with the accessory whether or not you turn on airplane mode. If you turn on airplane mode, you won't be able to make calls, send or receive text messages, access the internet, or use bluetooth devices.

Any Changes or modifications not expressly approved by the party responsible for compliance could void the user's authority to operate the equipment.

This device complies with Part 15 of the FCC Rules. Operation is subject to the following two conditions:
(1) this device may not cause harmful interference, and (2) This device must accept any interference received, including interference that may cause undesired operation.

Federal Communications Commission (FCC) Statement:

This Equipment has been tested and found to comply with the limits for a Class B digital device, pursuant to Part 15 of the FCC rules. These limits are designed to provide reasonable protection against harmful interference in a residential installation. This equipment generates, uses and can radiate radio frequency energy and, if not installed and used in accordance with the instructions, may cause harmful interference to radio or television reception, which can be determined by turning the equipment off and on, the user is encouraged to try to correct the interference by one or more of the following measures:

- * Reorient or relocate the receiving antenna.
- * Increase the separation between the equipment and receiver.
- * Connect the equipment into an outlet on a circuit different from that to which the receiver is connected.
- * Consult the dealer or an experienced radio/TV technician for help.