

# FRONT

**MEASUREMENT:**  
width: 5 INCHES  
height: 7.5 INCHES

# BACK

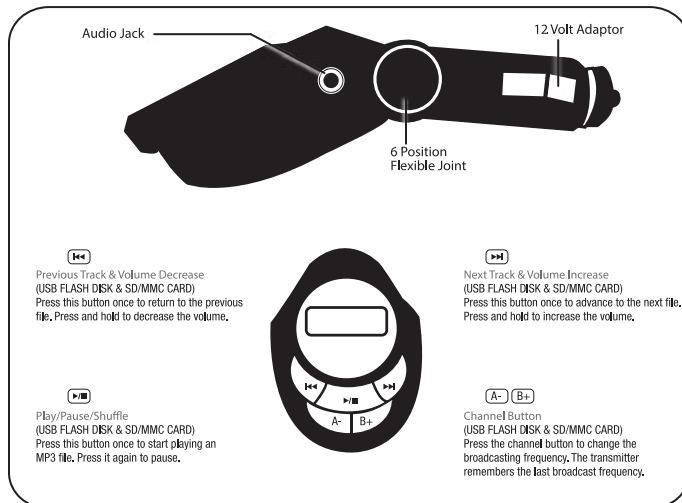
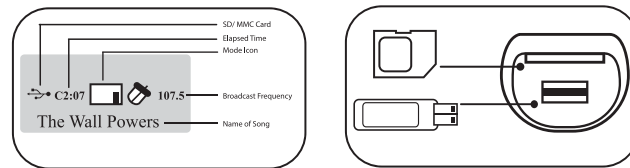
## WIRELESS FM TRANSMITTER WITH REMOTE

Congratulations on purchasing the FM Transmitter  
Follow these easy steps to get started

### SD/ MMC CARD & USB FLASH DISK

- 1) Insert the SD/MMC Card into the SD/MMC Card slot of transmitter  
\*unit can read SD cards up to 16GB  
Insert the USB Flash Drive in USB Port of transmitter  
Insert the audio device in the audio jack of transmitter

- 2) The LCD will display the screen shown in Fig. 4 press the button once to start playing an MP3 file.  
Press again to pause.
- 3) Press the button once to advance to the next file. Press and hold the button to increase the volume.
- 4) Press the button once to go to the previous file. Press and hold the button to decrease the volume.

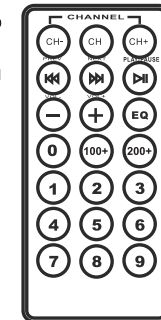


Technical support: techsupport@esicellular.com or call 212 883-8838  
Model: 1500061

## WIRELESS FM TRANSMITTER WITH REMOTE

### REMOTE INSTRUCTION

- 1) When you plug in your USB Flash drive or SD Card it will list your songs in order of the upload to your device. It will also associate a track number to the song. To go to a song, press the track number associated with the song and then press "PLAY/PAUSE"  
(Example: To go to the #135 song press the numbers "1" "3" "5" then press "PLAY/PAUSE" The FM transmitter screen will flash the track number and song name )
- 2) Press the CH+ or CH- to change the frequency or press a frequency number then press CH  
(Example: To go to FM frequency 107.5 press the numbers "1" "0" "7" "5"  
The screen will flash the FM frequency)
- 3) To change the volume on the remote press the - to decrease or + to increase the volume.
- 4) Press the EQ button to change the mode of the transmitter from: NORMAL, POP, ROCK, COUNTRY, CLASSIC, JAZZ etc.
- 5) Press to Play/ Pause your music.



1500061 FM TRANSMITTER

### FCC Information

This device complies with Part 15 of the FCC rules. Operation is subject to the following two conditions: (1) this device may not cause harmful interference, and (2) this device must accept any interference received, including interference that may cause undesired operation.

### Federal Communications Commission (FCC) Statement

This Equipment has been tested and found to comply with the limits for a Class B digital device, pursuant to Part 15 of the FCC rules. These limits are designed to provide reasonable protection against harmful interference in a residential installation. This equipment generates, uses and can radiate radio frequency energy and, if not installed and used in accordance with the instructions, may cause harmful interference to radio or television reception, which can be determined by turning the equipment off and on, the user is encouraged to try to correct the interference by one or more of the following measures:

- \* Reorient or relocate the receiving antenna.
- \* Increase the separation between the equipment and receiver.
- \* Connect the equipment into an outlet on a circuit different from that to which the receiver is connected.
- \* Consult the dealer or an experienced radio/TV technician for help.

Changes or modifications not expressly approved by the party responsible for compliance could void your authority to operate the equipment.