



Flu Card® Pro (wireless SD card)

Quick Start Guide

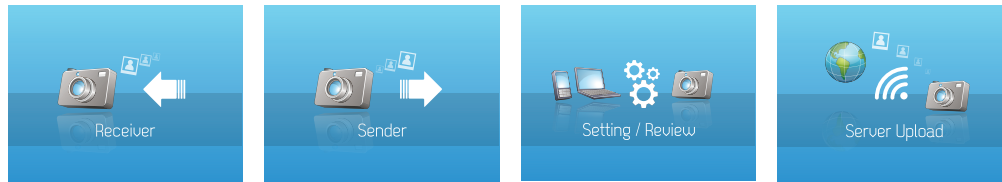


For more information, visit www.flu-card.com

TREK 2000 International LTD - 30 Loyang Way #07-13/14/15 Singapore 508769
 Tel : (65)-6546 6088 Fax : (65)-6546 6066
 Sales enquiries : sales@trek2000.com.sg | Technical support : support@trek2000.com.sg
www.trek2000.com.sg | www.thumbdrive.com

Control Images

1. Insert Flu Card® Pro into the SD card slot of your digital camera.
2. Switch on your digital camera.
3. Switch to Play Back / View Mode of your camera.
4. You would be able to see 4 control images:



Functions:

Photo Sharing

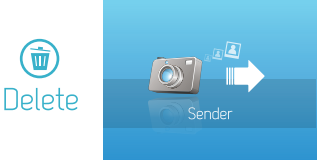

Setting / Review

Server Upload

Beeping Sequence

- Intermittent 1 beep - Indicating transmission in progress
- Intermittent 2 beeps - Indicate completion of transmission

Photo sharing (P2P) between Flu Card® Pro A and B

Flu Card® Pro A (Sender Card)	Flu Card® Pro B (Receiver Card)
<ol style="list-style-type: none"> 1. Insert your Flu Card® Pro and switch on your digital camera. 2. Switch to Play Back / View Mode of your camera. 3. Delete "Sender" control image on Flu Card® Pro A (Upon DELETE of the "Sender" control image, the image will disappear, indicating that the function is in progress).  <ol style="list-style-type: none"> 4. Flu Card® Pro A will start to beep at 1 sec interval, indicating that it is sending the picture files. 5. After receiver has successfully received the files sent, turn off and on the camera. The "Sender" control image will be restored. 	<ol style="list-style-type: none"> 1. Insert your Flu Card® Pro and switch on your digital camera. 2. Switch to Play Back / View Mode of your camera. 3. Delete "Receiver" control image on Flu Card® Pro B (Upon DELETE of the "Receiver" control image, the image will disappear, indicating that the function is in progress).  <ol style="list-style-type: none"> 4. Flu Card® Pro B will start to beep at 1 sec interval, indicating that it is receiving the picture files. 5. Flu Card® Pro B emits intermittent 2 beeps, indicating that it has received the picture files. 6. Turn off and on the camera. The "Receiver" control image will be restored and the picture files just received could be viewed on the camera, under the Play Back / View Mode of your camera.

Configuration of the Flu Card® Pro

1. Insert your Flu Card® Pro and switch on your digital camera.
2. Switch to Play Back / View Mode of your camera.
3. Delete "Setting/Review" control image on the Flu Card® Pro (Upon DELETE of the "Setting/Review" control image, the image will disappear and the Flu Card® Pro starts beeping, indicating that it is setting up Wi-Fi).



4. When beeping stops, Wi-Fi for Setting/Review is ready.
5. Connect your PC or mobile phone (with Wi-Fi feature) to the Flu Card® Pro. Look for the SSID "Trek_FLUCARD_WiFi". Check your PC or mobile phone manual for the setting of Wi-Fi feature.
6. Use your web-browser on your PC or mobile phone to access the Flu Card® Pro configuration page at: <http://192.168.1.1/> or <http://flu.card/>
7. On the configuration page, you could set the SSID and Key for up to 30 wireless access points (AP) and your FTP account (note that the Flu Card® Pro is pre-configured with a FTP account with 2GB of free storage).
8. Besides configuring the Flu Card® Pro, you could also view the photos in the Flu Card® Pro.
9. Turn off and on the camera. The "Setting/Review" control image will be restored.

Server Upload

1. Insert your Flu Card® Pro and switch on your digital camera.
2. Switch to Play Back / View Mode of your camera.
3. Delete "Server Upload" control image on the Flu Card® Pro (Upon DELETE of the "Server Upload" control image, the image will disappear, and the Flu Card® Pro starts emitting intermittent 4 beeps, indicating that it is setting up Wi-Fi).



4. A change in beeping to beeps at 1 sec interval indicates that the Flu Card® Pro has connected to an access point (AP) and is uploading the picture files to the FTP server (using the settings in Setting/Review).
5. Flu Card® Pro emits intermittent 2 beeps, indicating that it has successfully uploaded the picture files. Turn off and on the camera. The "Server Upload" control image will be restored.

Note:

- You could only activate 1 function on the Flu Card® Pro at any time.
- Instead of deleting the control images, you could set DPOF value (> 0, check your camera manual if necessary) on the control images to activate the respective functions.
- For better send and receive performance, trigger sender function before receiver function.
- If you wish to share only selected pictures, set the print order number to 1 for those selected pictures (check your camera manual for details on DPOF). Without any DPOF setting, Flu Card® Pro would send all pictures in the card.



Flu Card® Pro (wireless SD card)

Quick Start Guide



For more information, visit www.flu-card.com

TREK 2000 International LTD - 30 Loyang Way #07-13/14/15 Singapore 508769

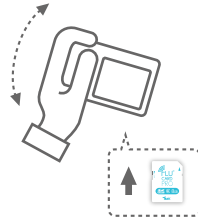
Tel : (65)-6546 6088 Fax : (65)-6546 6066

Sales enquiries : sales@trek2000.com.sg | Technical support : support@trek2000.com.sg


www.trek2000.com.sg | www.thumbdrive.com

• Motion Sensors

1. Flu Card® Pro has a built-in motion sensor. You could initiate the transmission of your picture files by shaking the camera (after inserting the Flu Card® Pro).
2. To activate this “Shake” function, enable “Shake Detection” in the Flu Card® Pro configuration page. Please refer to the [Configuration of the Flu Card® Pro](#) section on how to access the configuration page.
3. For effective shake control, hold the side of your camera with the position of the Flu Card® Pro further away from your palm as seen in the figure on your right.



• Photo sharing (P2P) between Flu Card® Pro A and B via “Shake”

Flu Card® Pro A (Sender Card)	Flu Card® Pro B (Receiver Card)
<ol style="list-style-type: none"> 1. Insert your Flu Card® Pro and switch on your digital camera. 2. Shake your camera (with Flu Card® Pro A); you will hear a beeping tone. Shake your camera again within the next 5 seconds. Flu Card® Pro A will start to beep at 1 sec interval, indicating that it is sending the picture files. 3. After receiver has successfully received the files sent, turn off and on the camera to reset the card. 	<ol style="list-style-type: none"> 1. Insert your Flu Card® Pro and switch on your digital camera. 2. Switch to Play Back / View Mode of your camera. 3. Delete “Receiver” control image on Flu Card® Pro B (Upon DELETE of the “Receiver” control image, the image will disappear, indicating that the function is in progress).  <ol style="list-style-type: none"> 4. Flu Card® Pro B will start to beep at 1 sec interval, indicating that it is receiving the picture files. 5. Flu Card® Pro B emits intermittent 2 beeps, indicating that it has received the picture files. 6. Turn off and on the camera. The “Receiver” control image will be restored and the picture files just received could be viewed on the camera, under the Play Back / View Mode of your camera.

• Server Upload via “Shake”

1. Insert your Flu Card® Pro and switch on your digital camera.
2. Shake your camera (with Flu Card® Pro inside). You will hear a beeping tone.
3. Follow by shaking your camera 2 times within the next 5 seconds. You will hear a similar beeping tone each time, when Flu Card® Pro detects the shaking motion.
4. Flu Card® Pro starts emitting intermittent 4 beeps, indicating that it is setting up Wi-Fi).
5. A change in beeping to beeps at 1 sec interval indicates that the Flu Card® Pro has connected to an access point (AP) and is uploading the picture files to the FTP server (using the settings in Setting/Review).
6. Flu Card® Pro emits intermittent 2 beeps, indicating that it has successfully uploaded the picture files. Turn off and on the camera to reset the card.

FCC

THIS DEVICE COMPLIES WITH PART 15 OF THE FCC RULES. OPERATION IS SUBJECT TO THE FOLLOWING TWO CONDITIONS:

- (1) THIS DEVICE MAY NOT CAUSE HARMFUL INTERFERENCE AND
- (2) THIS DEVICE MUST ACCEPT ANY INTERFERENCE RECEIVED, INCLUDING INTERFERENCE THAT MAY CAUSE UNDESIRABLE OPERATION.

Federal Communications Commission Requirements

The equipment has been tested and found to comply with the limits for Class B Digital Device, pursuant to part 15 of the FCC Rules. These limits are designed to provide reasonable protection against harmful interference in a residential installation. This equipment generates uses and can radiate radio frequency energy and, if not installed and used in accordance with the instruction, may cause harmful interference to radio communication. However, there is no guarantee that interference will not occur in a particular installation. If this equipment does cause harmful interference to radio or television reception, which can be determined by turning the equipment off and on, the user is encouraged to try to correct the interference by one or more of the following measures:

- Reorient or relocate the receiving antenna.
- Increase the separation between the equipment and receiver.
- Connect the equipment into an outlet on a circuit different from that to which the receiver is connected.
- consult the dealer or an experienced radio/TV technician for help.

THE CHANGES OR MODIFICATIONS NOT EXPRESSLY APPROVED BY THE PARTY RESPONSIBLE FOR COMPLIANCE COULD VOID THE USER'S AUTHORITY TO OPERATE THE EQUIPMENT.

This device complies with Part 15 of the FCC Rules. Operation is subject to the following two conditions:

- (1) This device may not cause harmful interference, and
- (2) This device must accept any interference received, including interference that may cause undesired operation.

FCC Radiation Exposure Statement

This equipment complies with FCC RF radiation exposure limits set forth for an uncontrolled environment. This transmitter must not be co-located or operating in conjunction with any other antenna or transmitter.