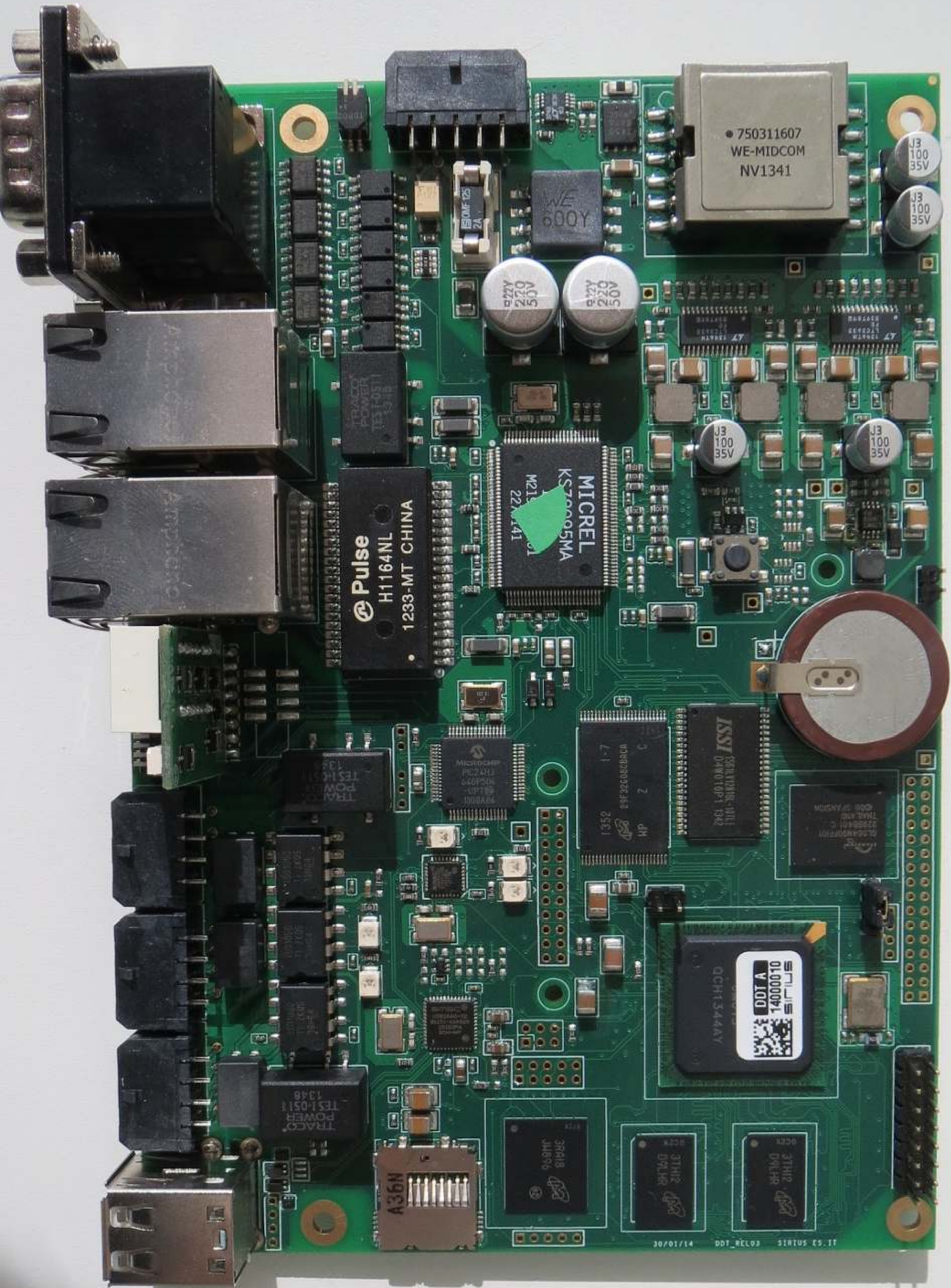






SHANGHAI
PART NO. C-011
天



750311607
WE-MIDCOM
NV1341

J3
100
35V

J3
100
35V

AOC
220
50V

AOC
220
50V

J3
100
35V

J3
100
35V

Pulse
H1164NL
1233-MT CHINA

MICREL
KS70005MA
M21
22N141

ISSI
98M171NR-0111
D4W010P1 1342

22388401
22388401
C
THA 418
00E 5145H5M

SLS
14000010
DDT A
QCH1344AY

TRACO
POWER
TES1-0511
1348

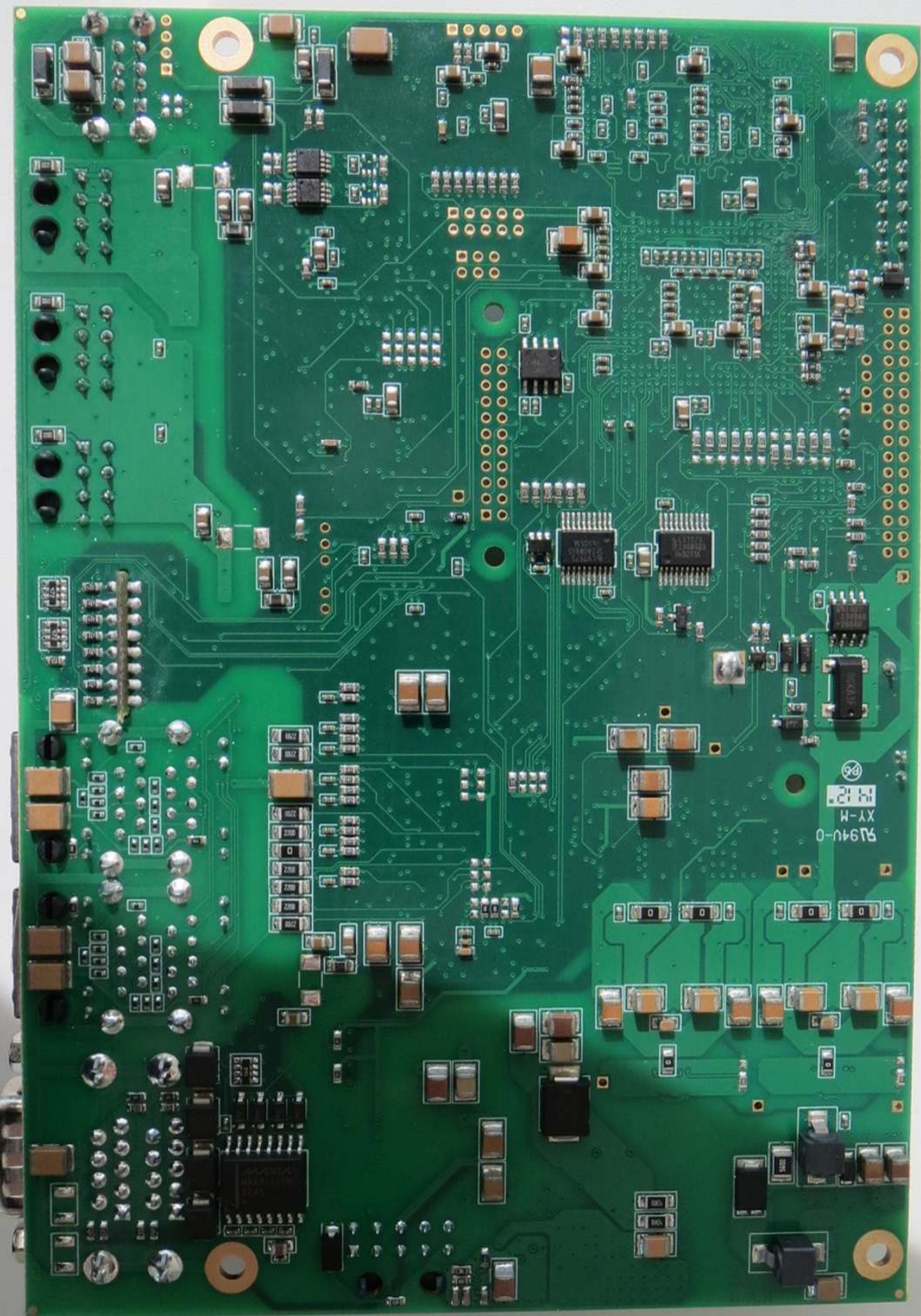
A36N

3TH12
D4LHR

3TH12
D4LHR

3TH12
D4LHR

30/01/14 DDT_REL03 SIRTUS ES_11



9294U-0
H-Y H
14.12
66

W3200
000012
000012
000012

102
202
202
202
202
202
202
202
202
202

102
202
202
202
202
202
202
202
202
202

102
202
202





MOH C
13000056

MOH R07

d2P
100V
50V

d2P
100V
50V

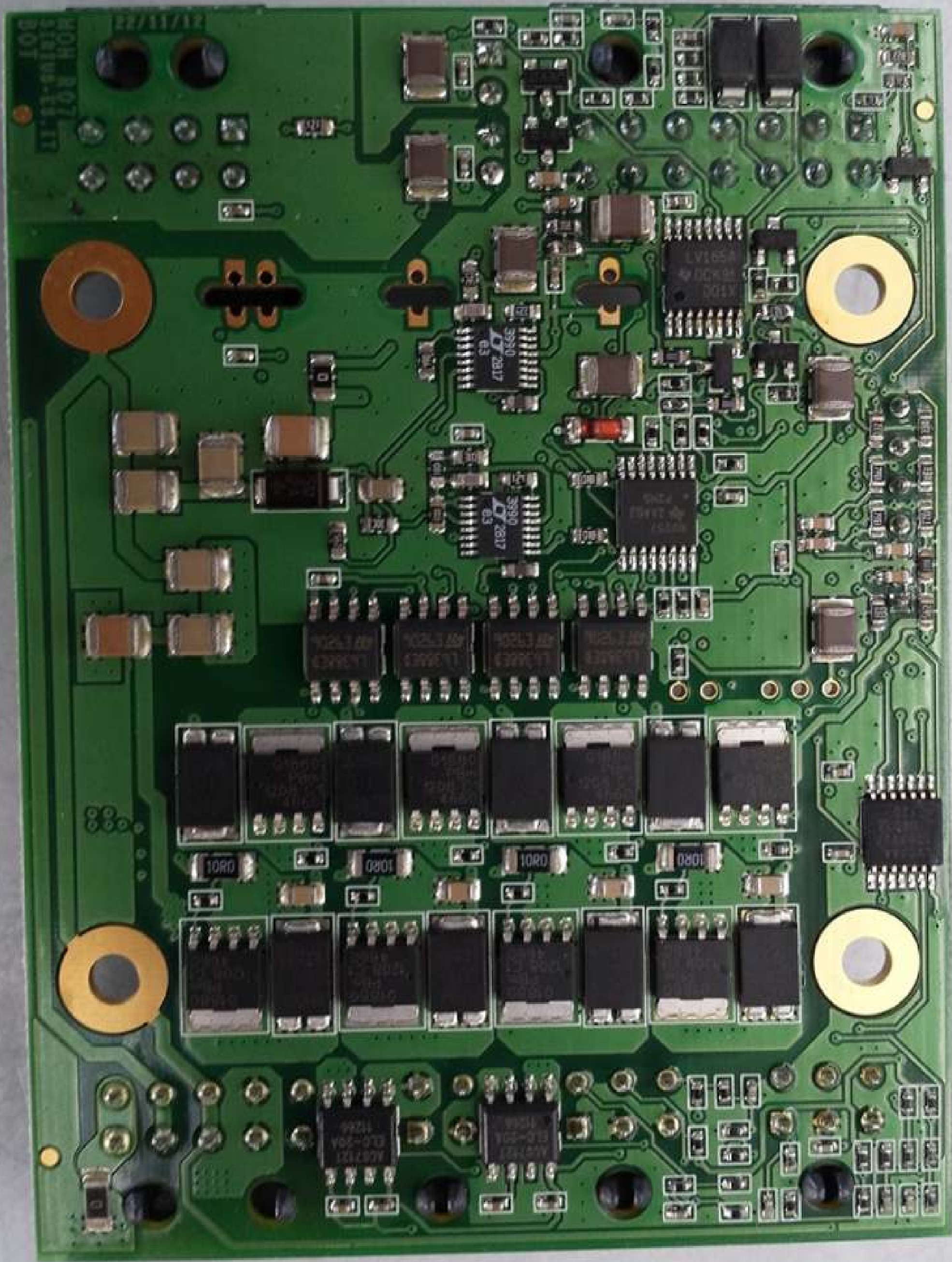
473D

473D

H1
22
63H

M94V-0







11

ES04F 125
70A

MOHA
13000368
IF 1115

100
JFK.
R02

100
JFK.
R02

22K
JFK.
K13

.473D

.473D

9



QR CODE
MOL A
14000016
SILVUS

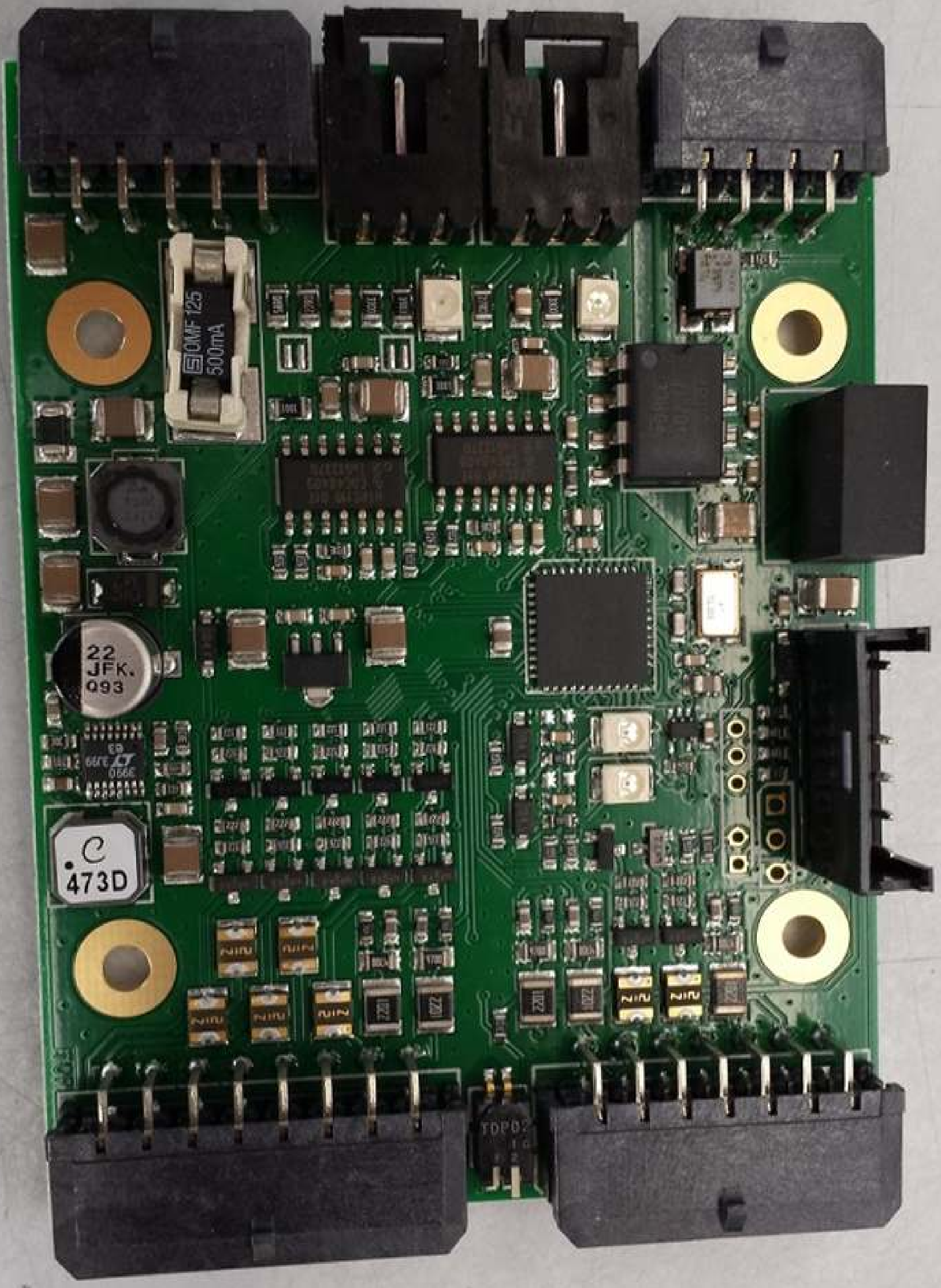


94V-0 HT-D
E332365

405-13



SILVUS-25.11

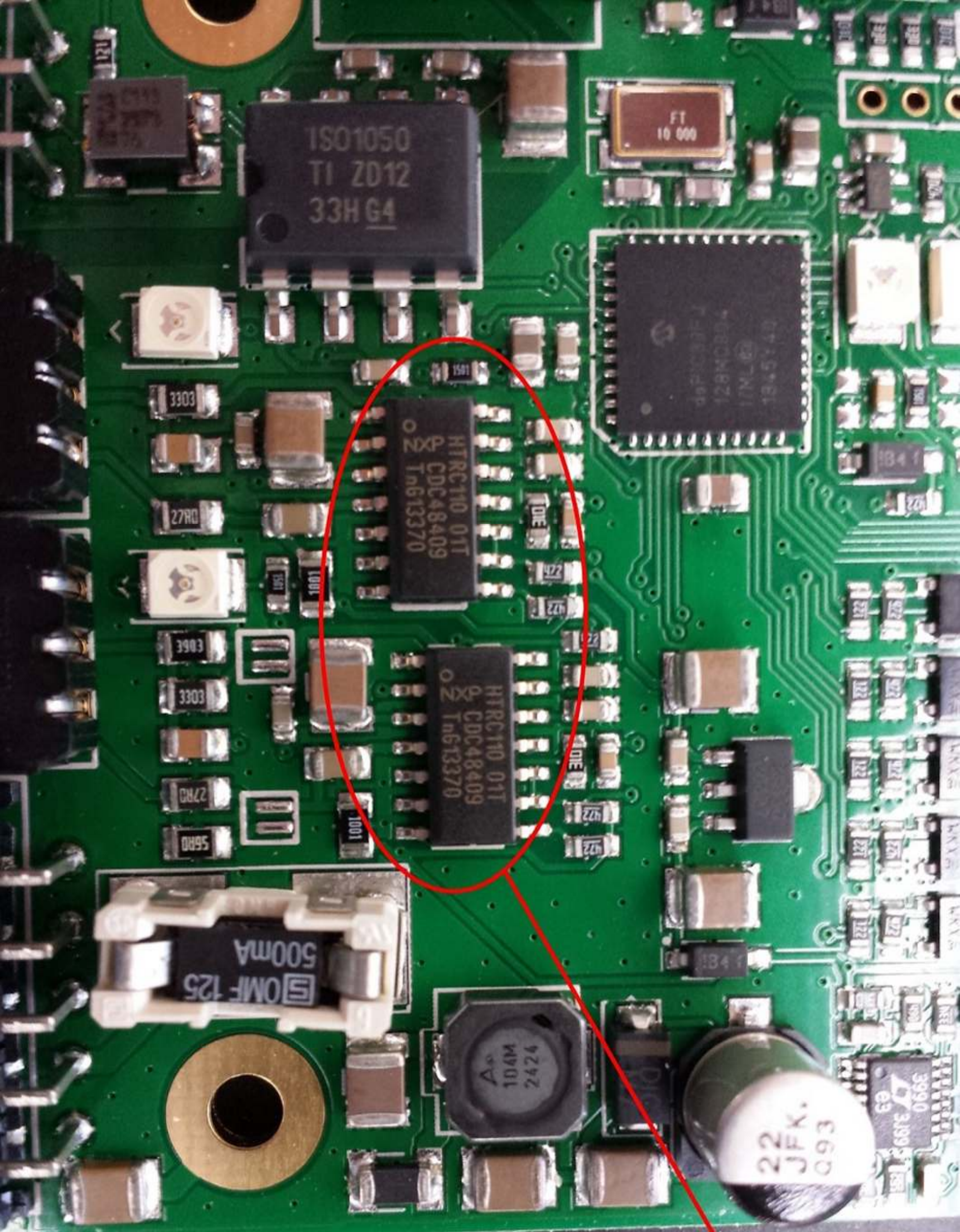


22
JFK.
093

OMF 125
500mA

473D

TDP02



ISO1050
TI ZD12
33HG4

HTRC110 01T
CDC48409
In613370

HTRC110 01T
CDC48409
In613370

OMF 125
500mA

424Z
WV01
2424
A

32 JFK
093

TRANSPONDER
HTRC110