



# ***MK-100***

## ***User's Manual***



### ***Mini Kiosk***



<http://www.poslab.com.tw>

Dec 2010 V2.0

**Table of Contents**

1. Standard Package ..... 4

2. Optional Devices ..... 5

3. General Guide ..... 6

4. Getting Start ..... 7

5. Install “Active Sync4.5 ..... 18

## **Federal Communication Commission Interference Statement**

This equipment has been tested and found to comply with the limits for a Class B digital device, pursuant to Part 15 of the FCC Rules. These limits are designed to provide reasonable protection against harmful interference in a residential installation.

This equipment generates, uses and can radiate radio frequency energy and, if not installed and used in accordance with the instructions, may cause harmful interference to radio communications. However, there is no guarantee that interference will not occur in a particular installation. If this equipment does cause harmful interference to radio or television reception, which can be determined by turning the equipment off and on, the user is encouraged to try to correct the interference by one of the following measures:

- . Reorient or relocate the receiving antenna.
- . Increase the separation between the equipment and receiver.
- . Connect the equipment into an outlet on a circuit different from that to which the receiver is connected.
- . Consult the dealer or an experienced radio/TV technician for help.

***FCC Caution:*** To assure continued compliance, any changes or modifications not expressly approved by the party responsible for compliance could void the user's authority to operate this equipment. (Example - use only shielded interface cables when connecting to computer or peripheral devices).

## ***FCC Radiation Exposure Statement***

This equipment complies with FCC RF radiation exposure limits set forth for an uncontrolled environment. This equipment should be installed and operated with a minimum distance of 20 centimeters between the radiator and your body.

This transmitter must not be co-located or operating in conjunction with any other antenna or transmitter.

The antennas used for this transmitter must be installed to provide a separation distance of at least 20 cm from all persons and must not be co-located or operating in conjunction with any other antenna or transmitter.

This device complies with Part 15 of the FCC Rules. Operation is subject to the following two conditions:

(1) This device may not cause harmful interference, and (2) This device must accept any interference received, including interference that may cause undesired operation.

# 1. Standard Package

Take out the terminal carefully and the following items will be found.

a. MK-100

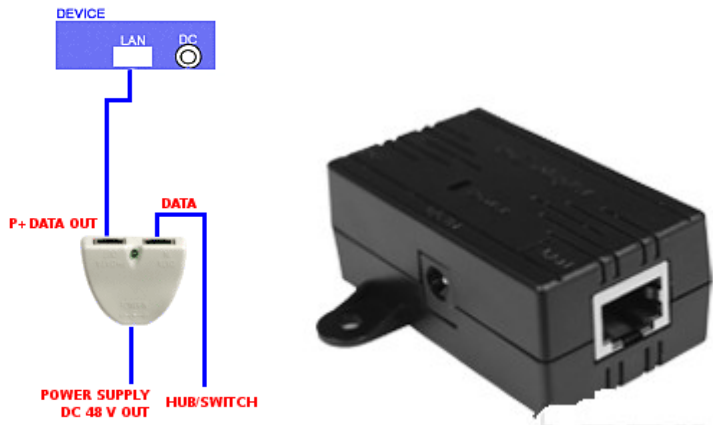


b. Power adaptor  
(MK100 only accepts 5v adaptor)



## 2. Optional Devices

### POE Adaptor



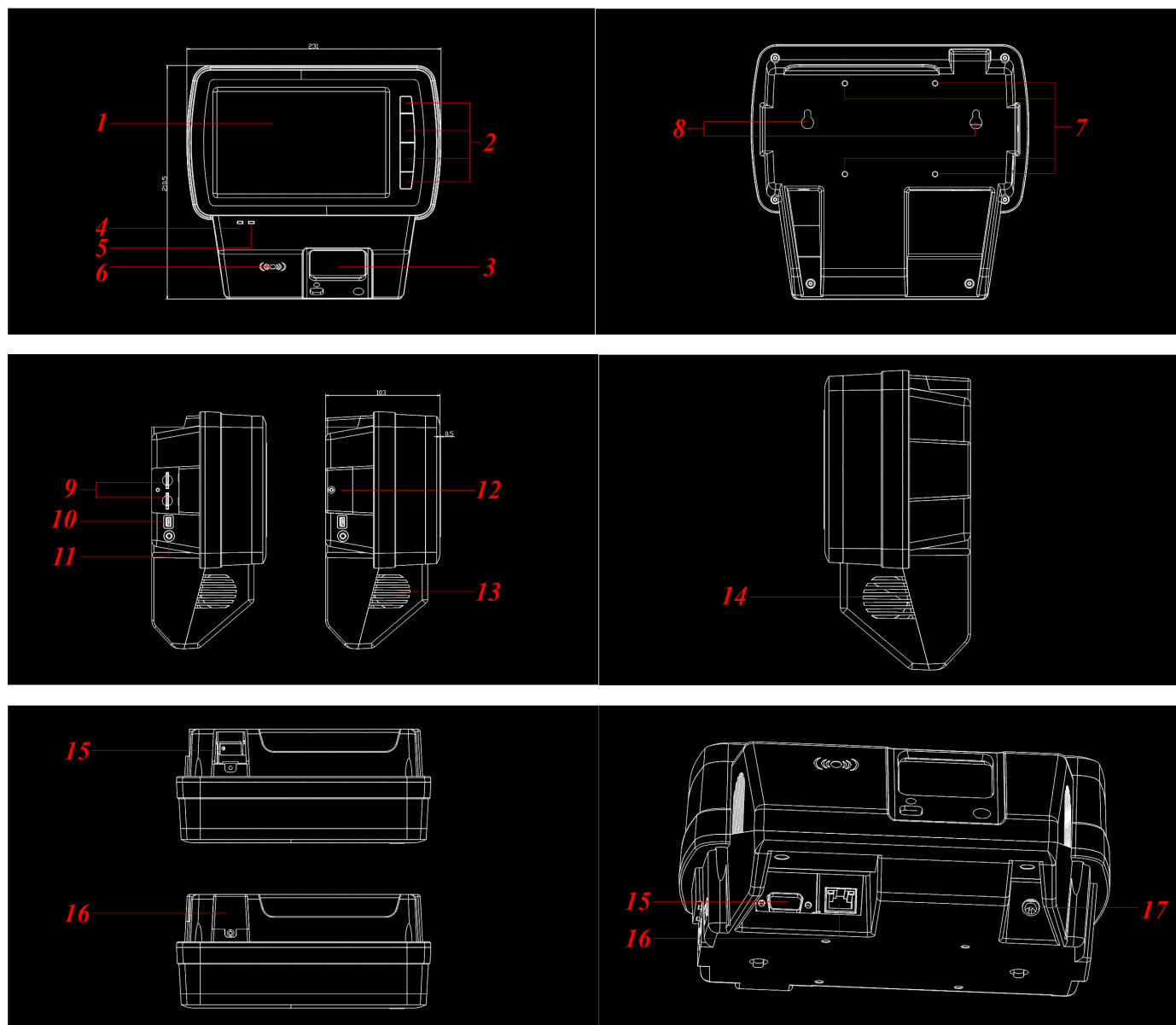
### Magnetic Card Reader



### Wall Mount Kit



### 3. General Guide

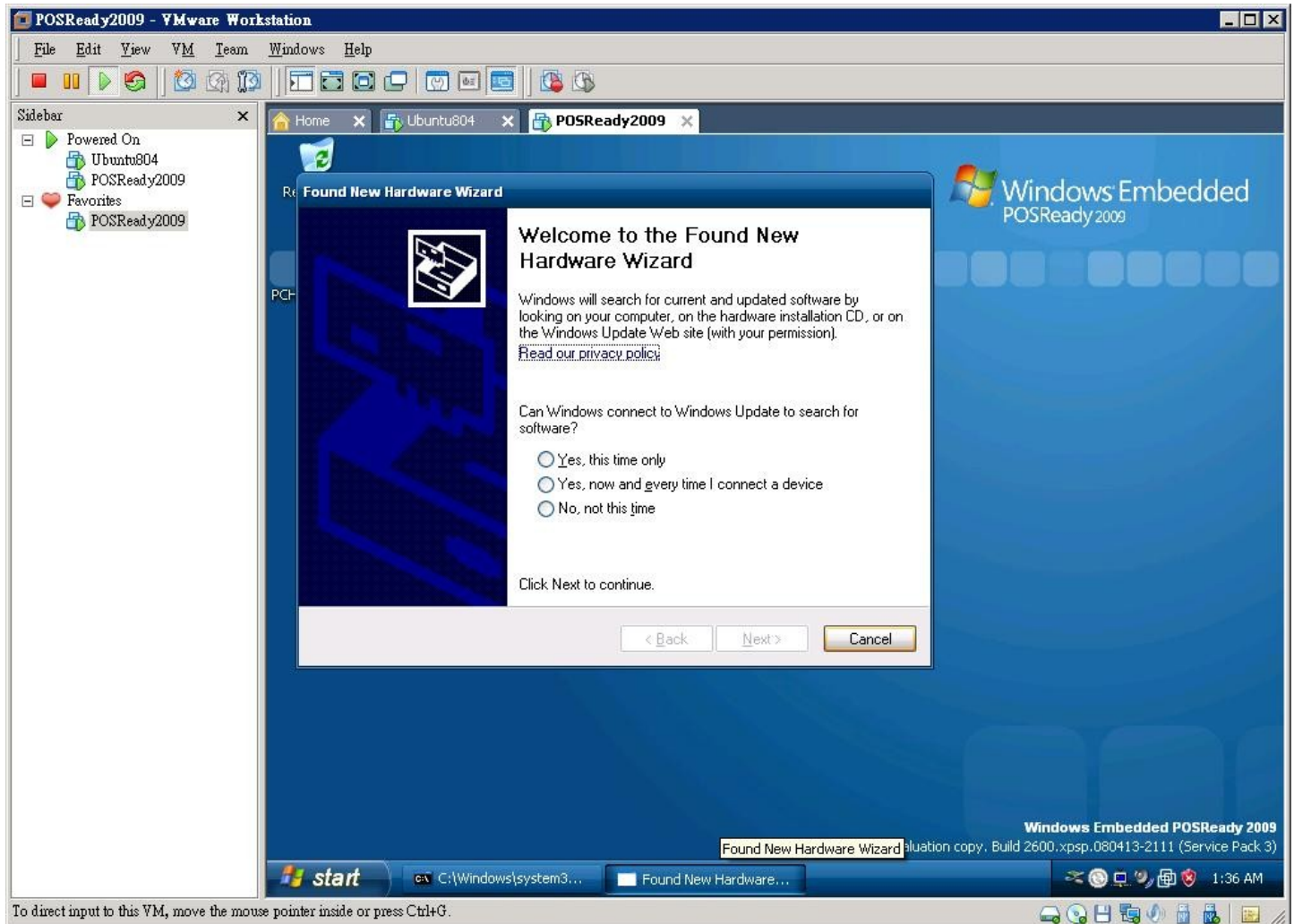


<b>1</b>	<b><i>LCD Display</i></b>	<b>11</b>	<b><i>Line-Out</i></b>
<b>2</b>	<b><i>Programmable Keys</i></b>	<b>12</b>	<b><i>Mini-SD Cover</i></b>
<b>3</b>	<b><i>Barcode Reader</i></b>	<b>13</b>	<b><i>Speaker</i></b>
<b>4</b>	<b><i>LAN Indicator</i></b>	<b>14</b>	<b><i>Speaker</i></b>
<b>5</b>	<b><i>Power On Indicator</i></b>	<b>15</b>	<b><i>USB WiFi Connector</i></b>
<b>6</b>	<b><i>RFID Reader</i></b>	<b>16</b>	<b><i>USB WiFi Cover</i></b>
<b>7</b>	<b><i>Wall-Mounting Holes</i></b>	<b>17</b>	<b><i>RS-232 Port</i></b>
<b>8</b>	<b><i>Wall-Mounting Holes</i></b>	<b>18</b>	<b><i>LAN Port</i></b>
<b>9</b>	<b><i>Mini-SD slot</i></b>	<b>19</b>	<b><i>DC-IN</i></b>
<b>10</b>	<b><i>Mini-USB</i></b>		

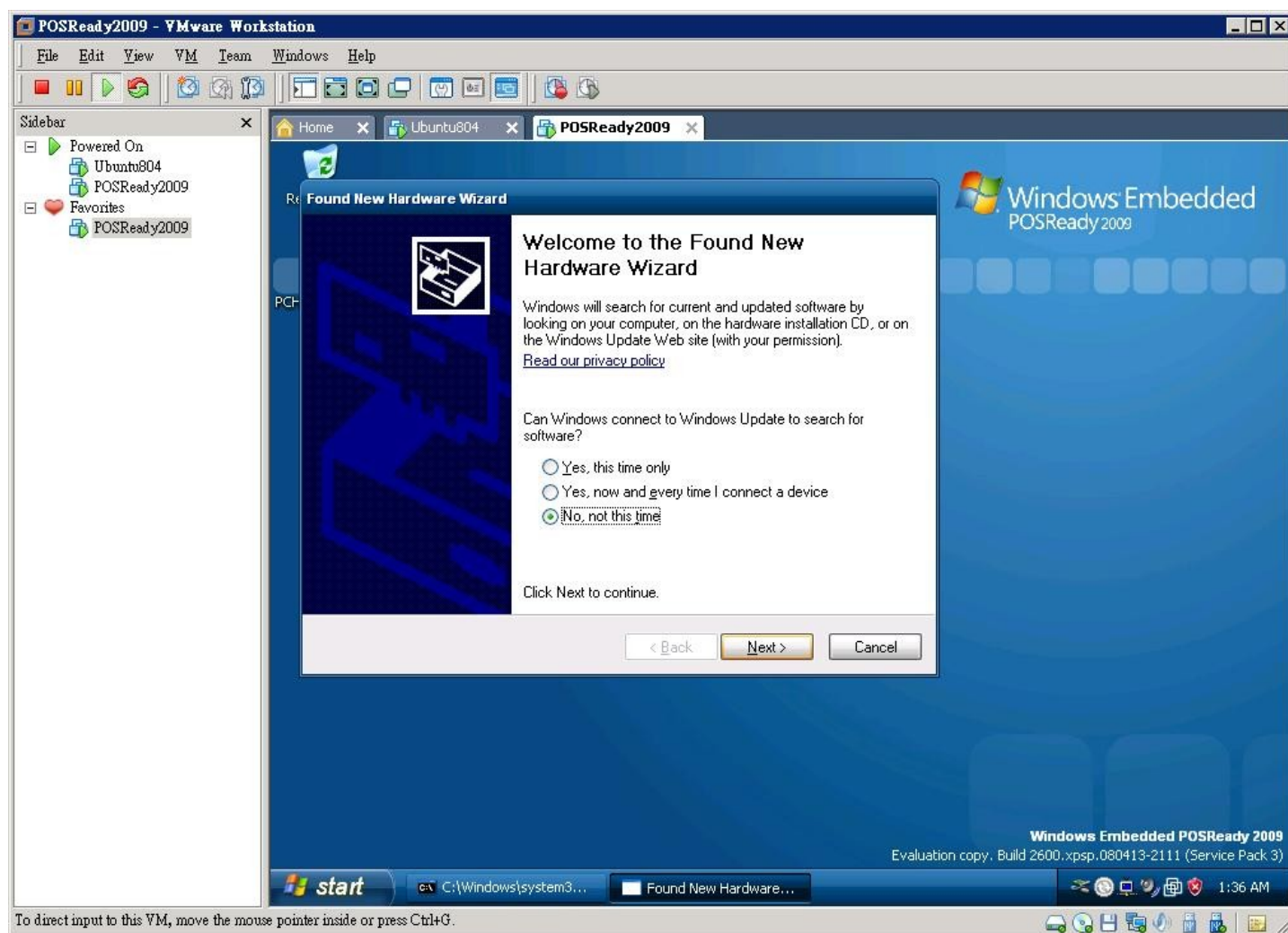
# 4. Getting Start

## Install USB driver

After the PC find the new hardware, follow the steps as the pictures indicate.

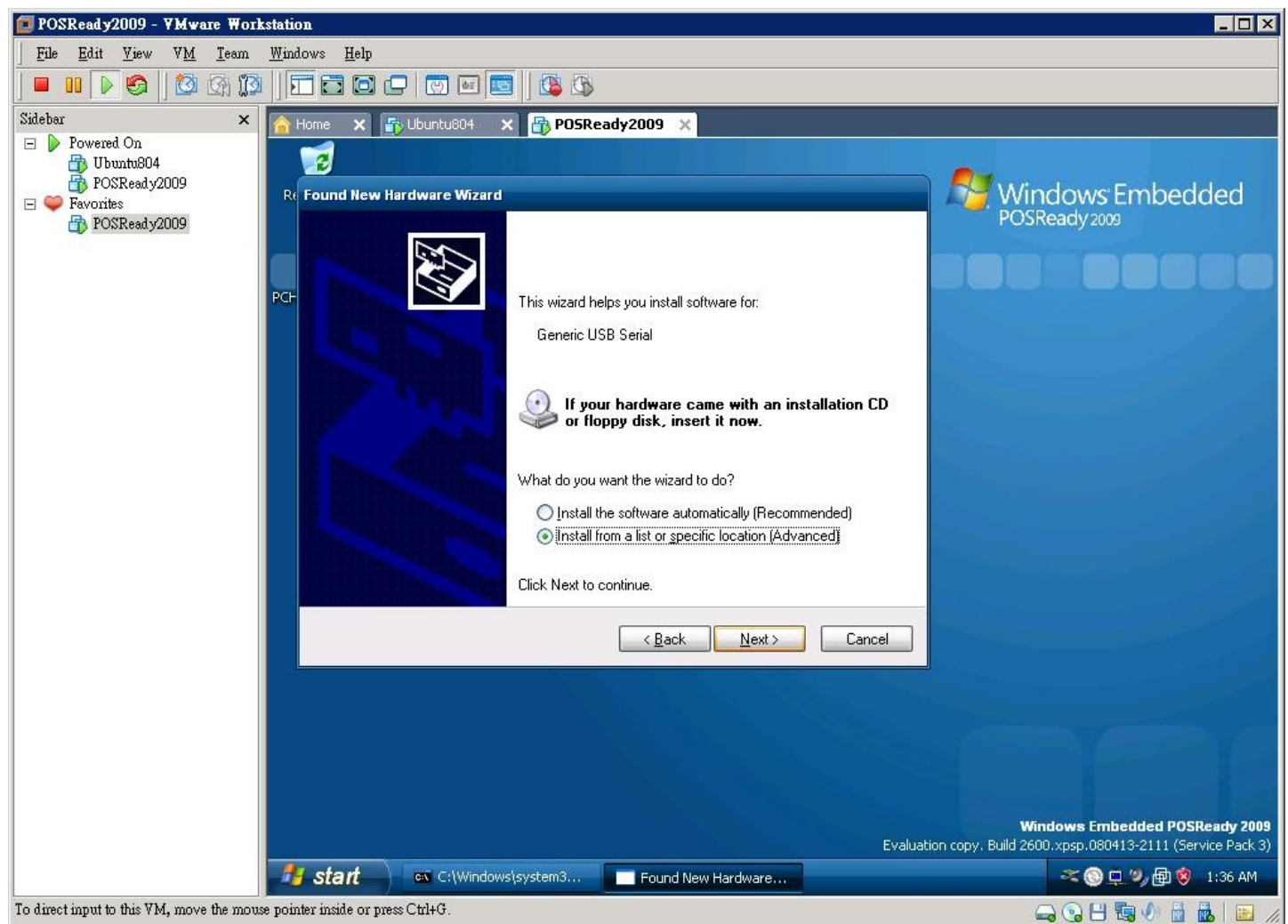


Select “No, not this time” for search for software?

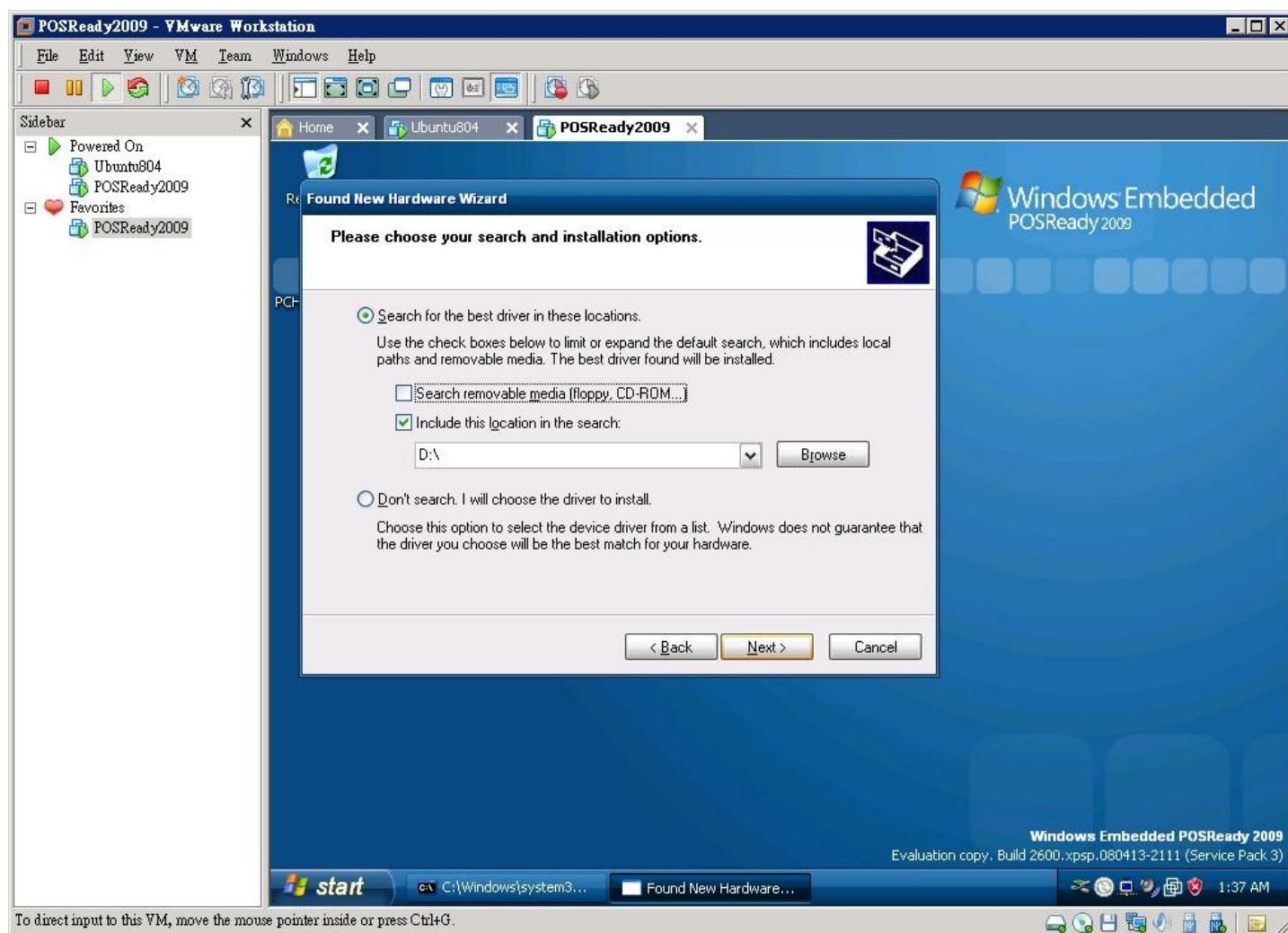




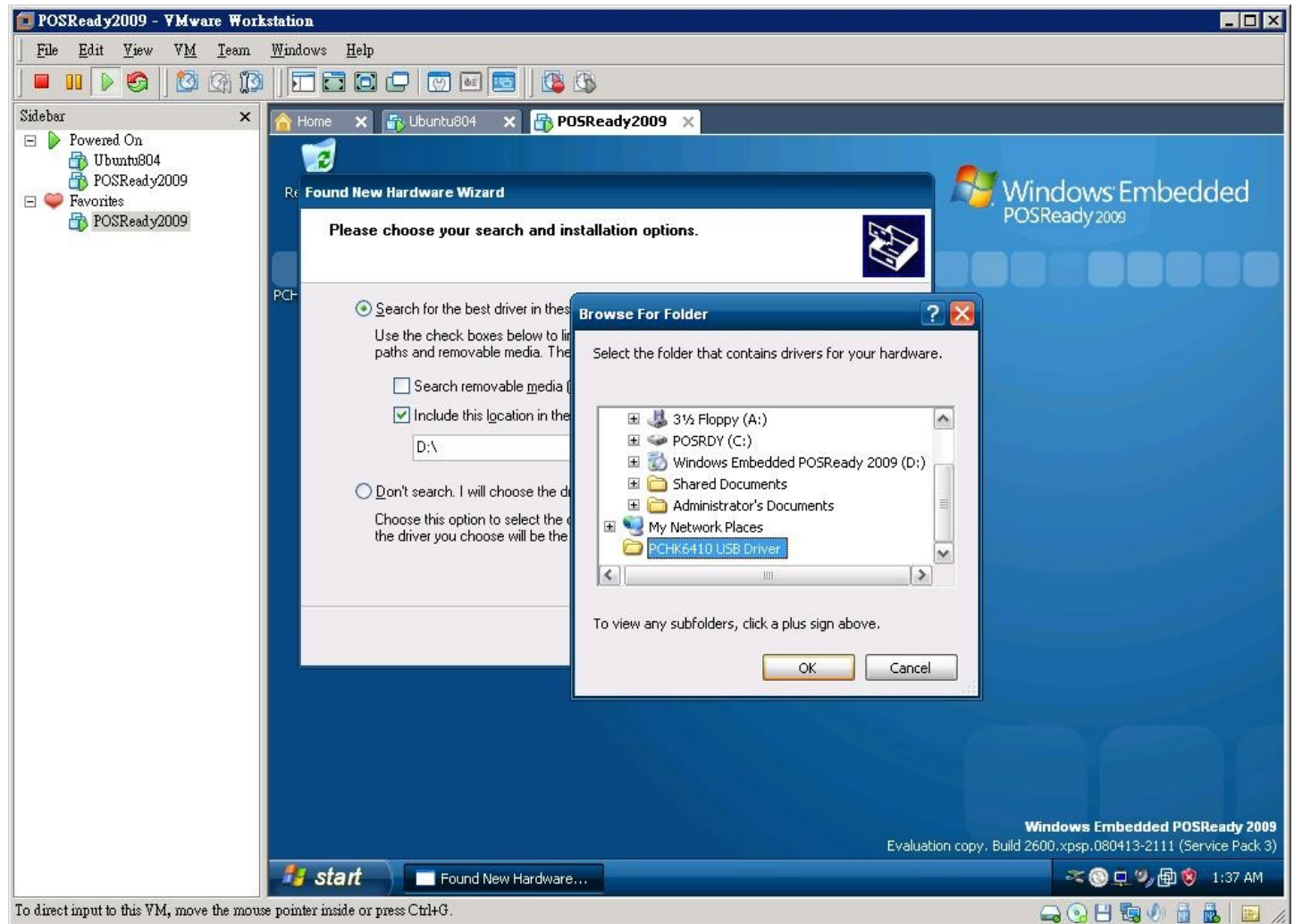
Select “ Install from a list or specific location” for the USB driver.

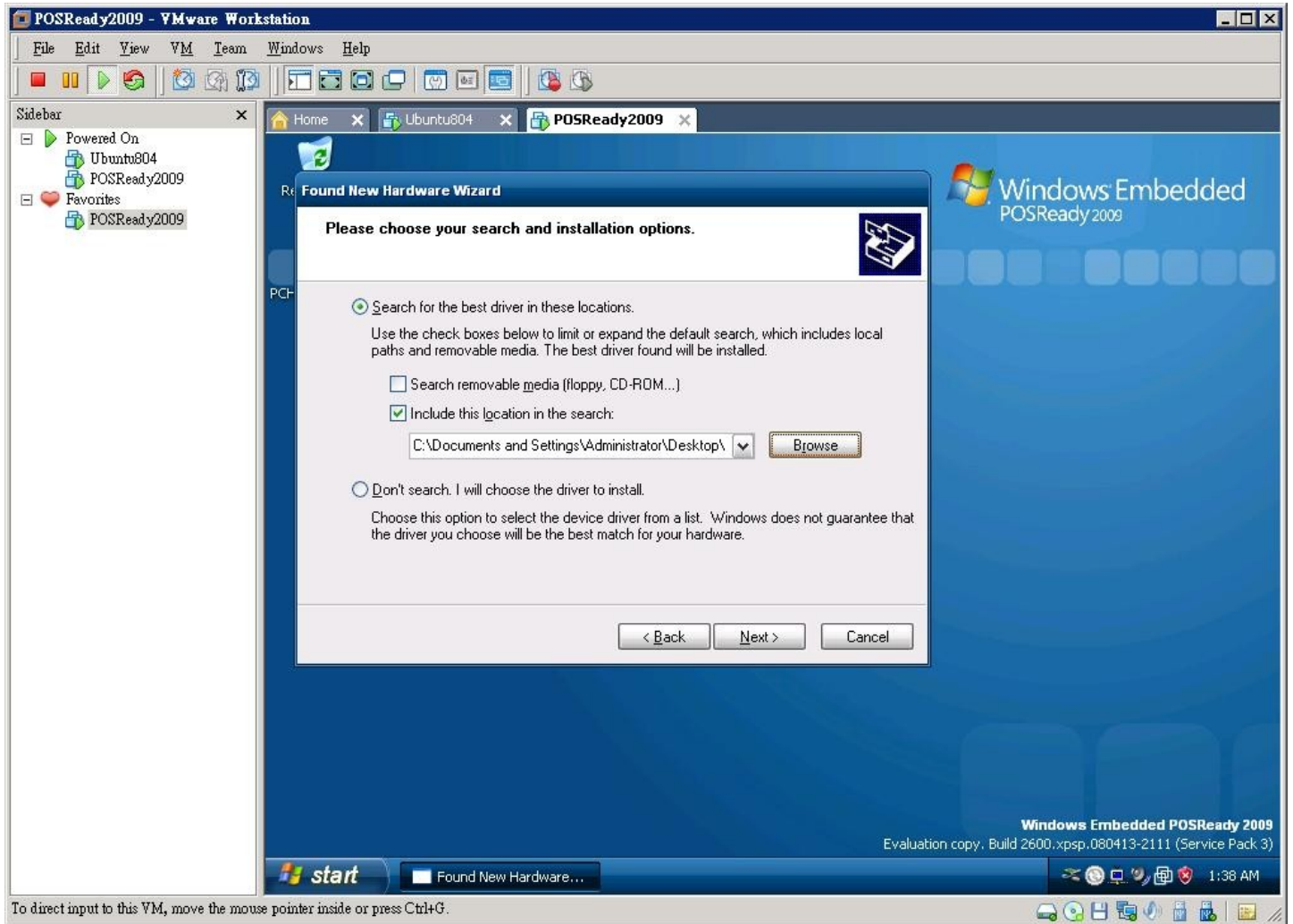


## Select "Include this location in this search"

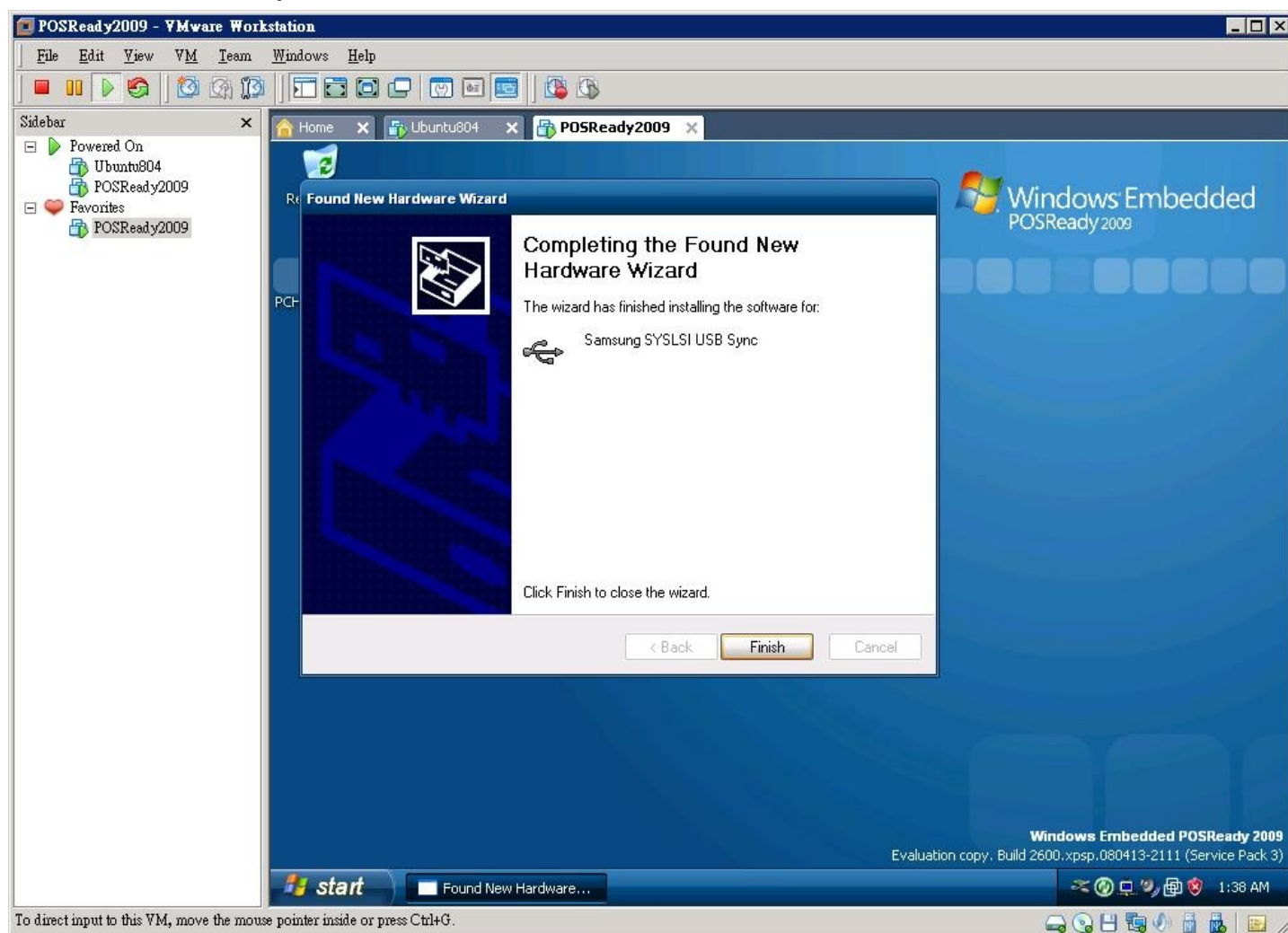


## Browse the CD's folder "PCHK6410 USB Driver"





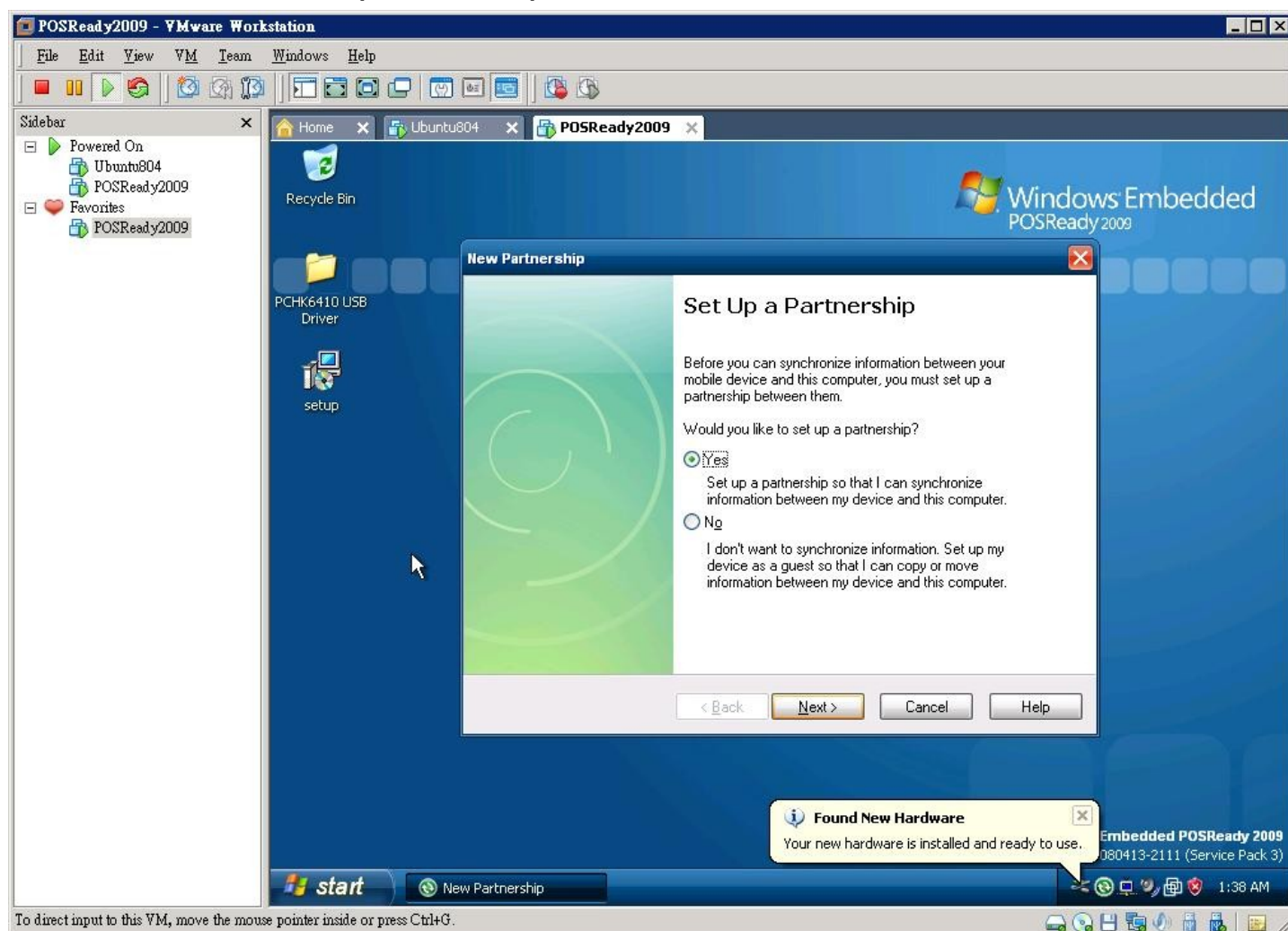
Installation complete.



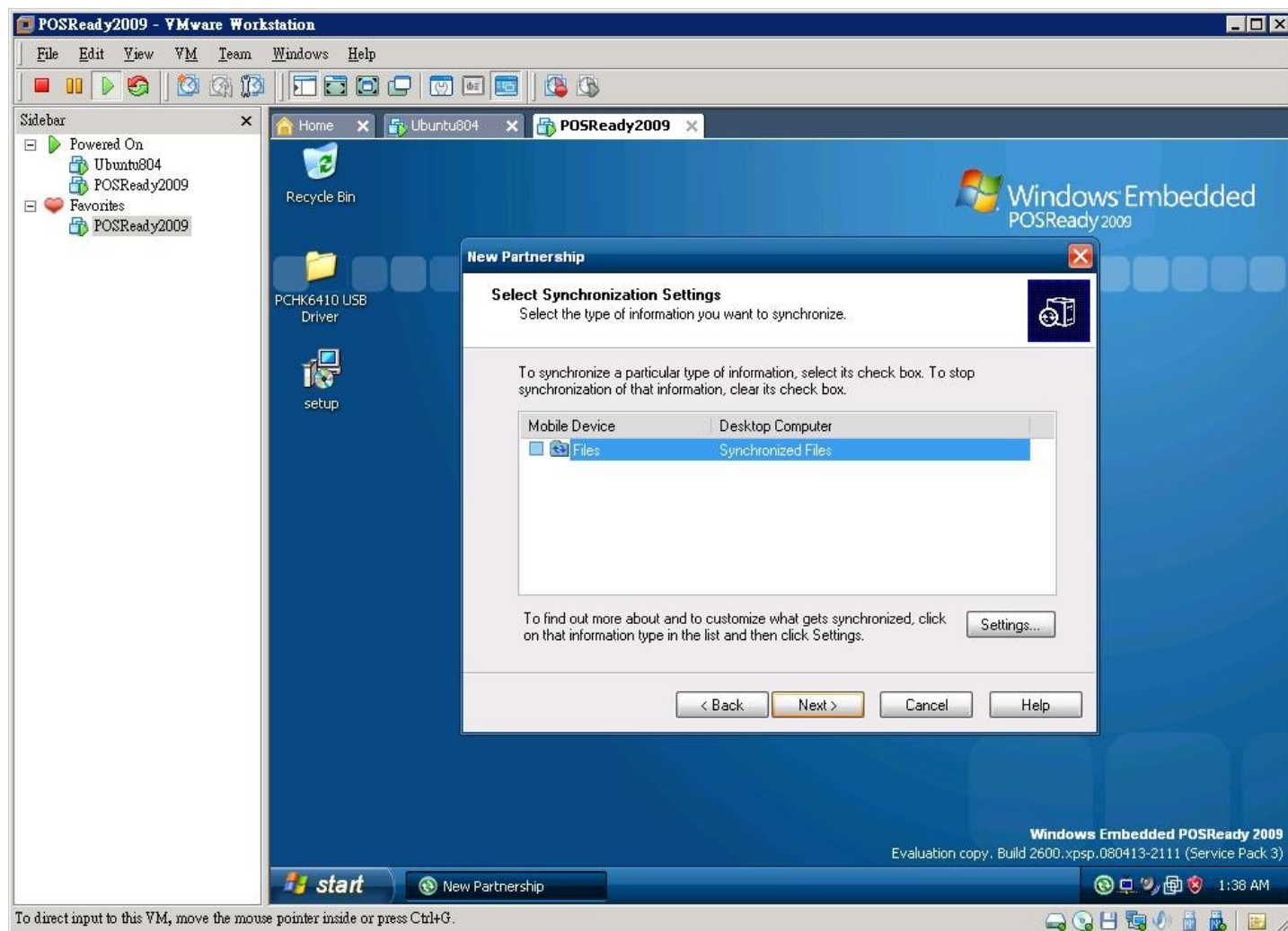


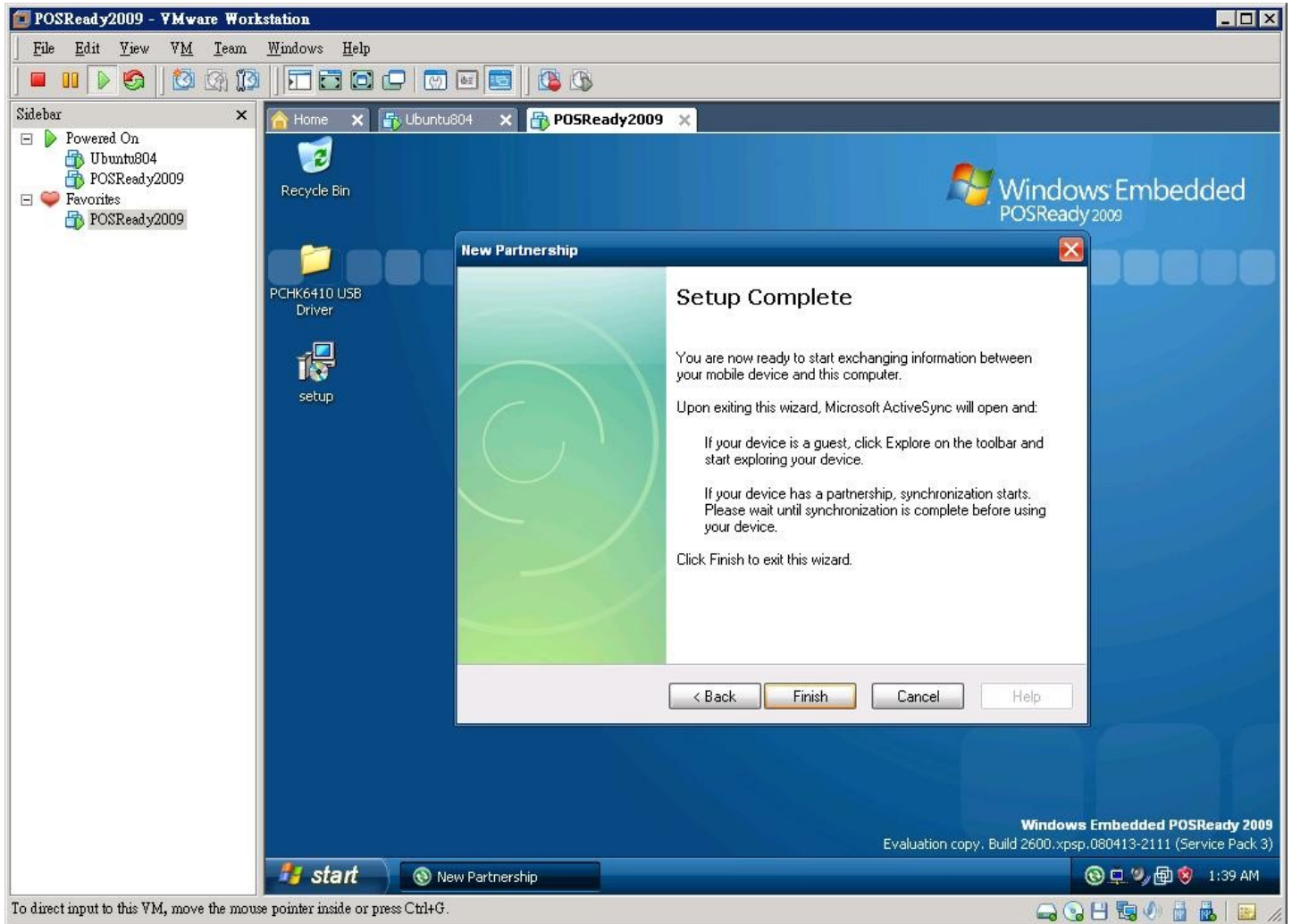
# Set up your Partnership.

Select "YES" for the partnership.

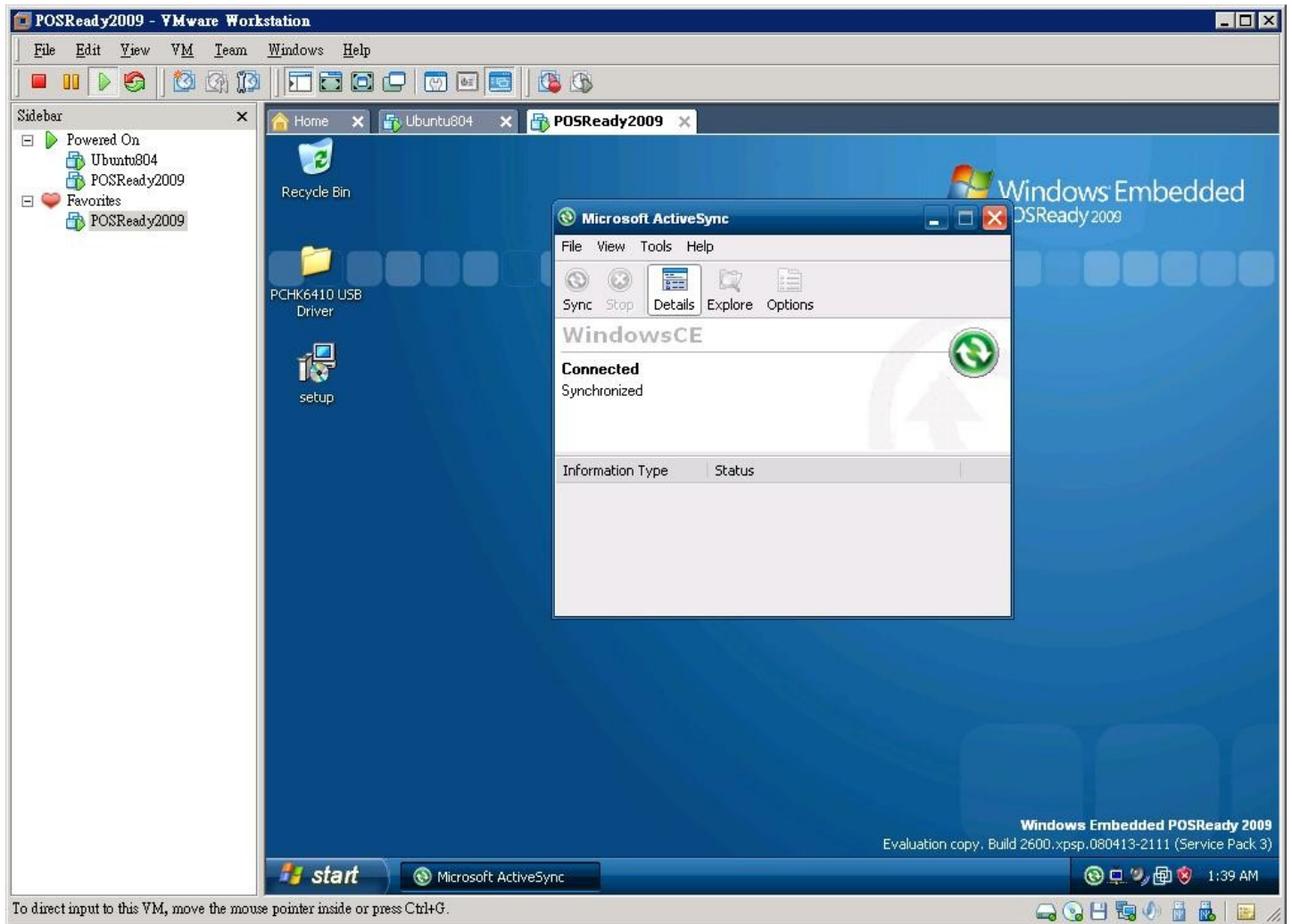


Click “Next”



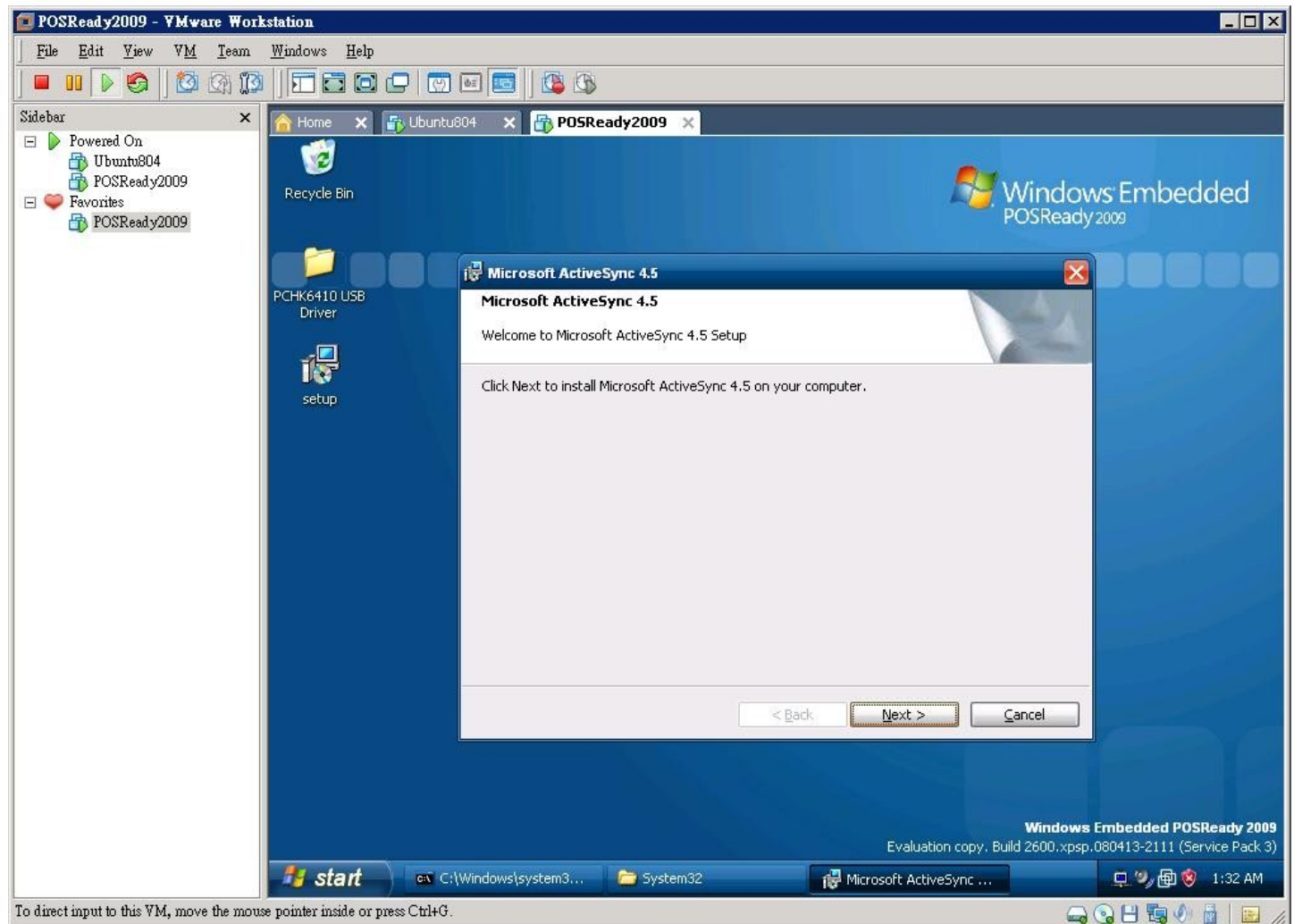




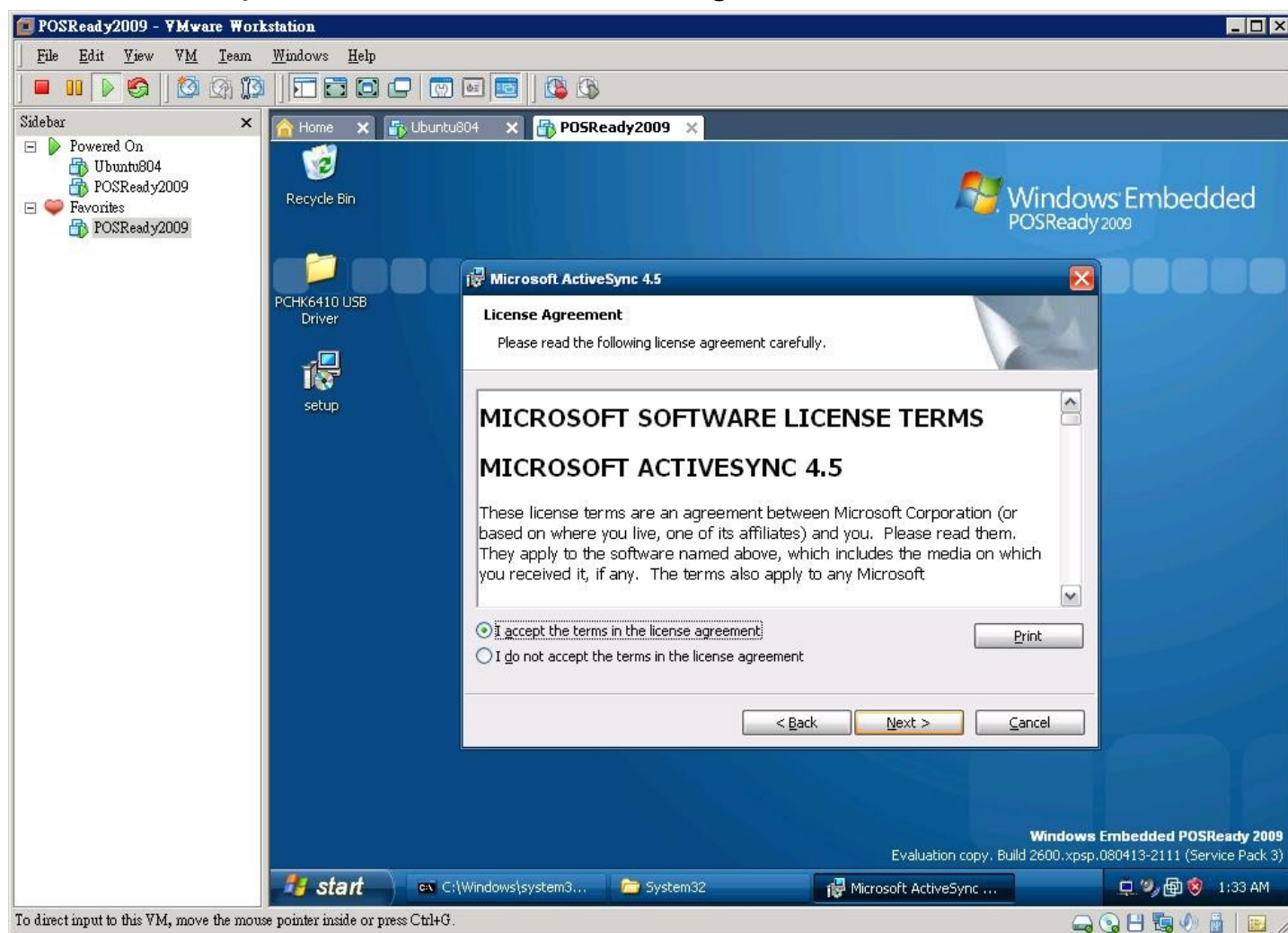


# 5. Install “Active Sync4.5”

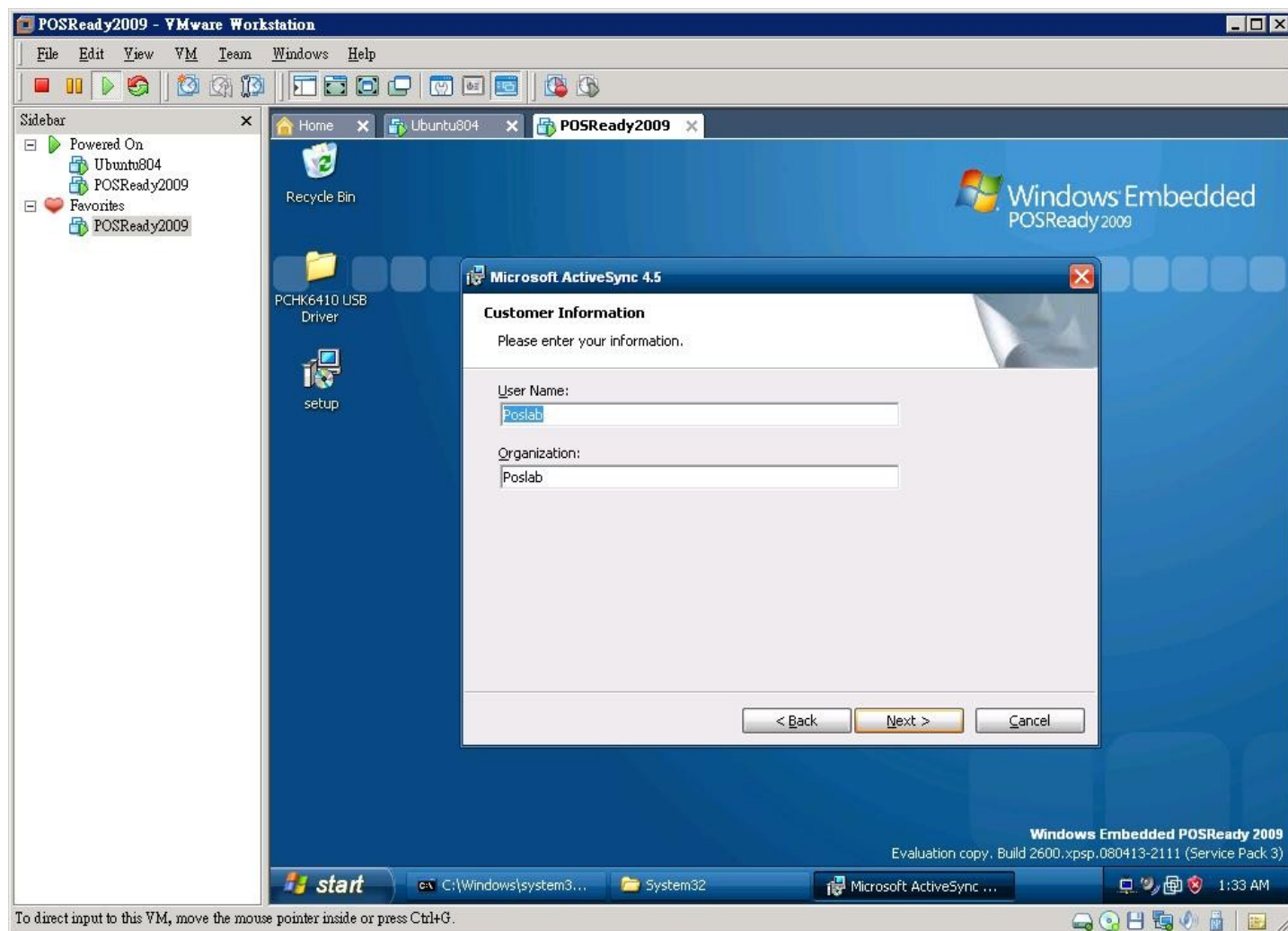
Run Active Sync4.5, Select “Next”



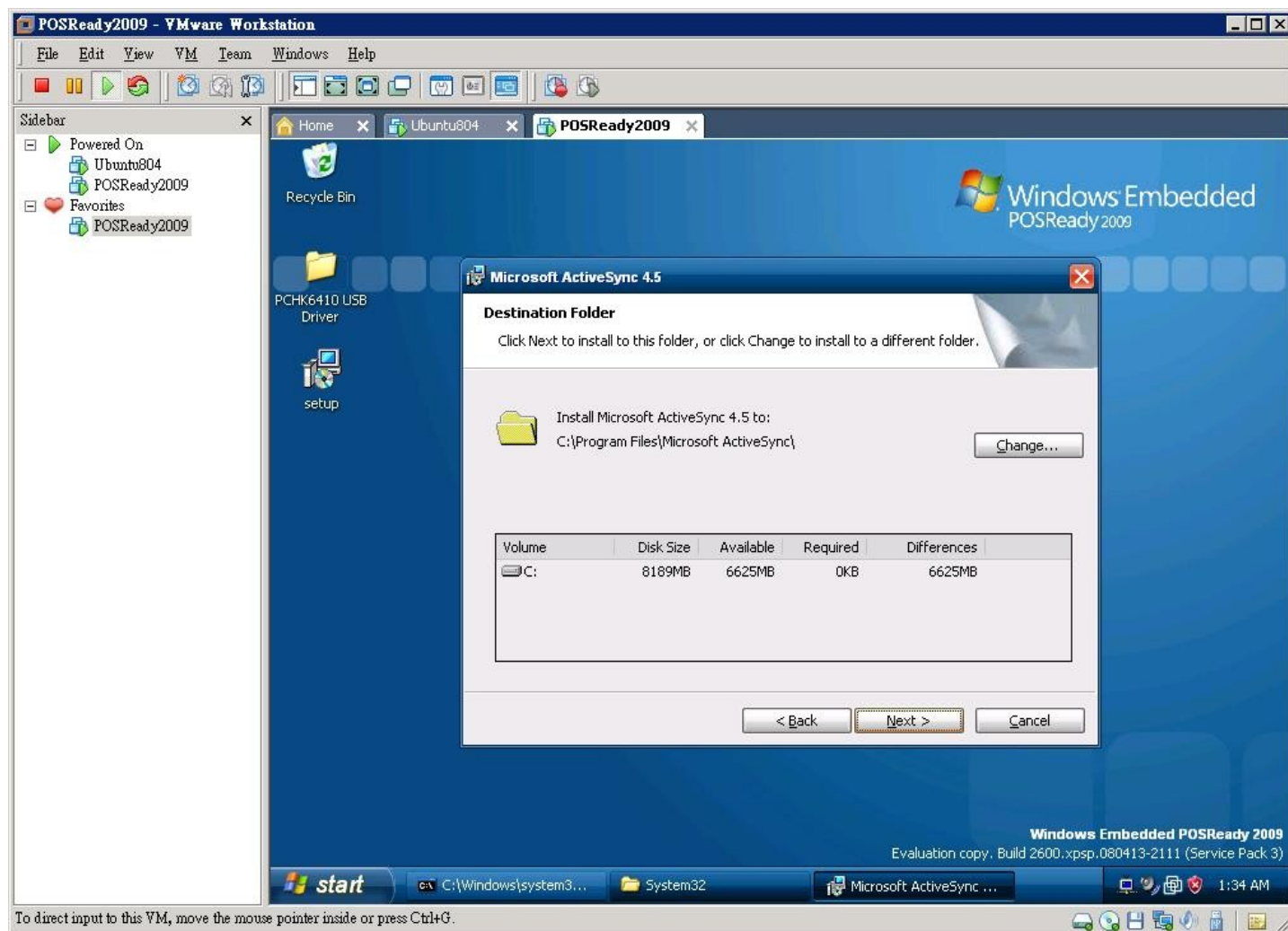
Select “I accept the terms in the license agreement”



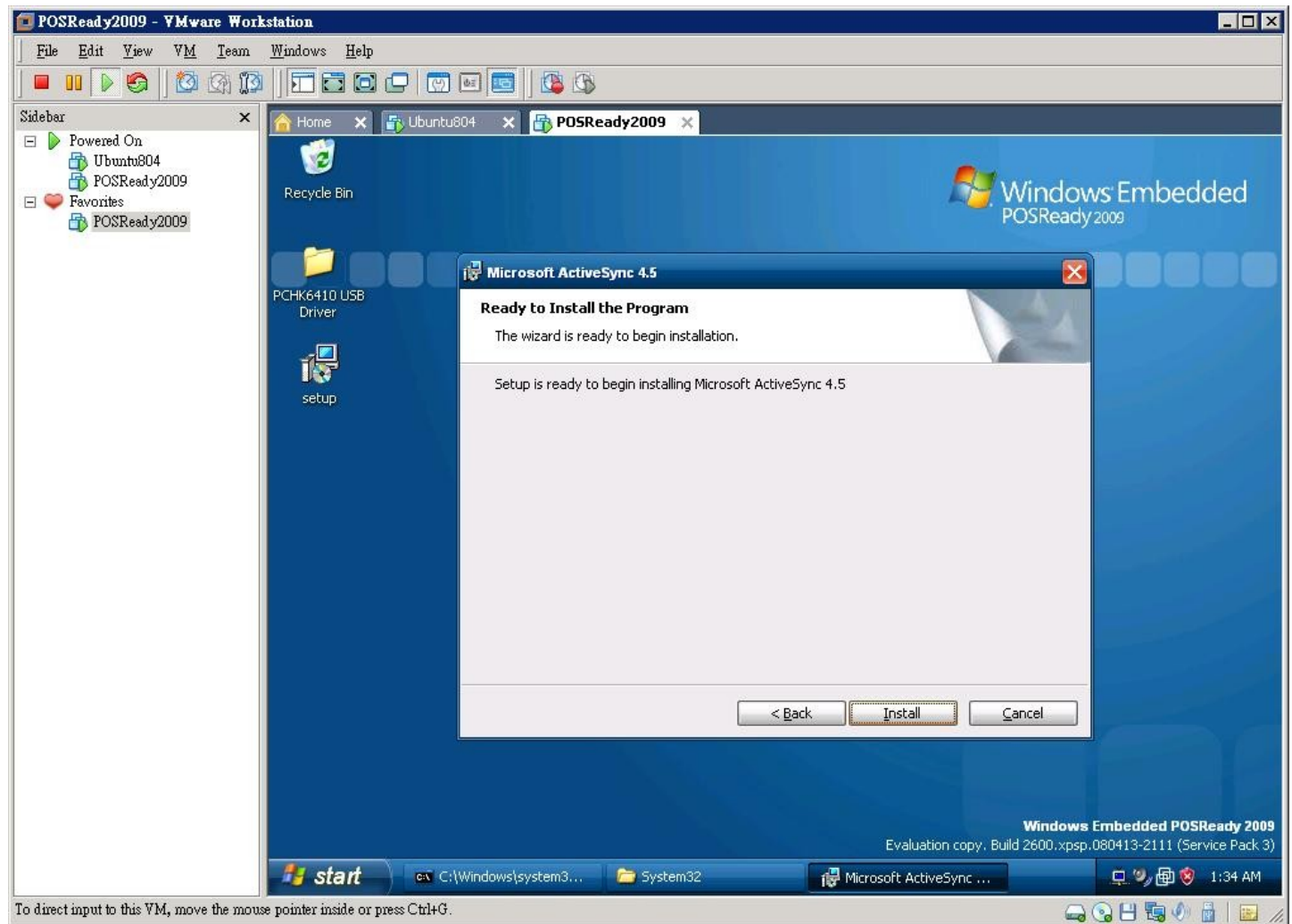
Click “Next” to continue next step.



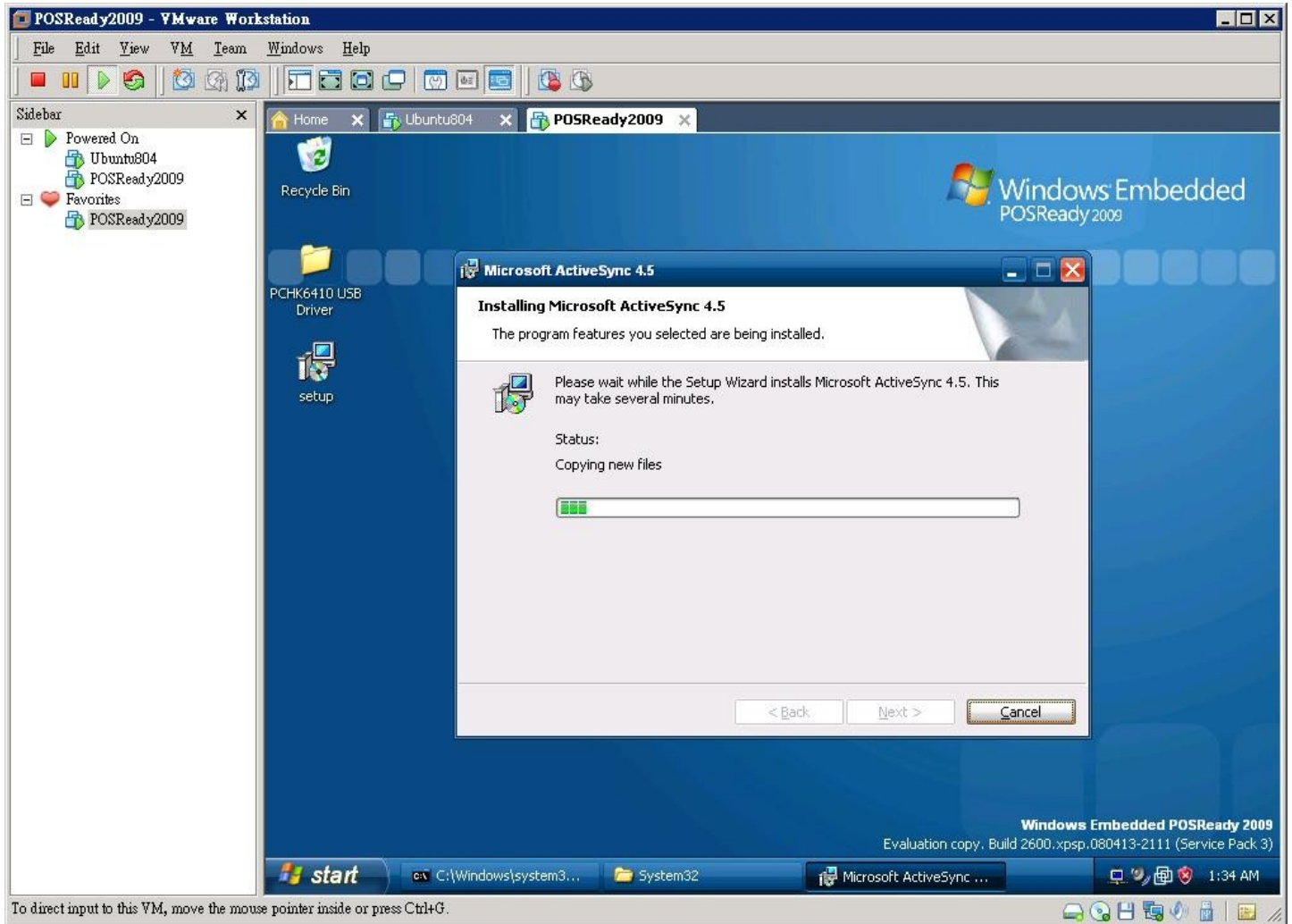
Click “Next” to continue next step.



Click “Install” to continue next step.







# Installation Complete

