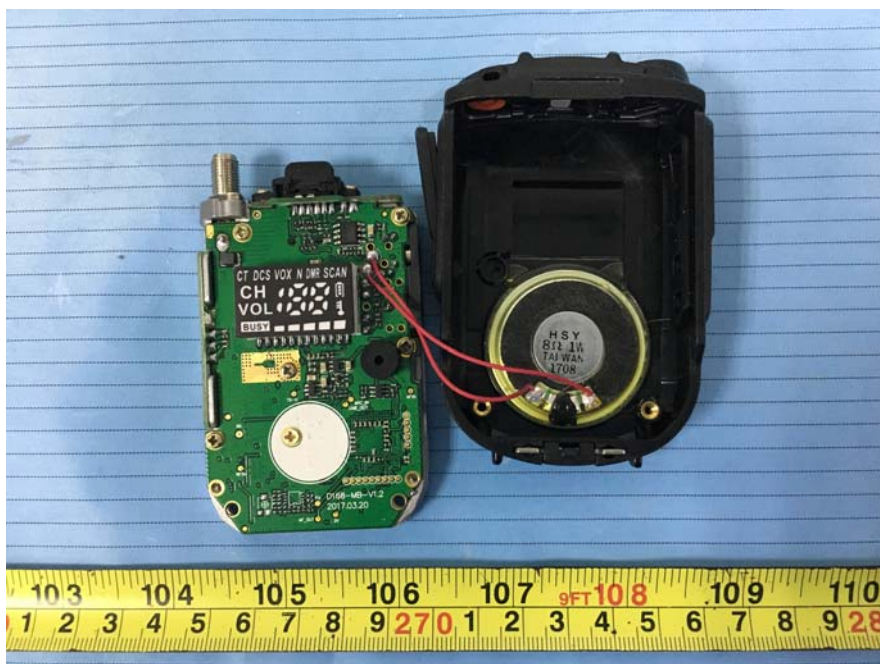


EXHIBIT C - EUT INTERNAL PHOTOGRAPHS

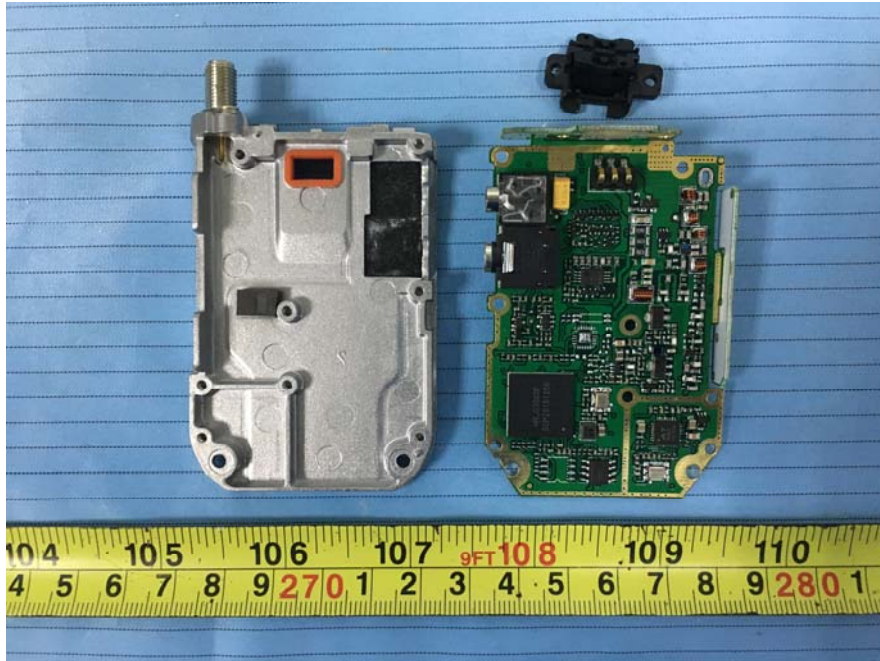
EUT – Cover off View 1



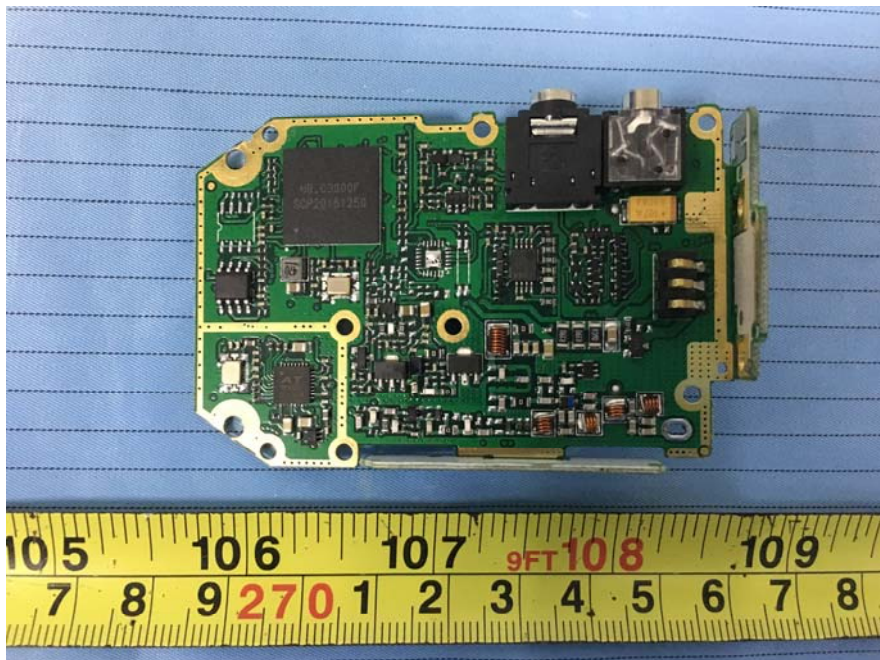
EUT – Cover off View 2



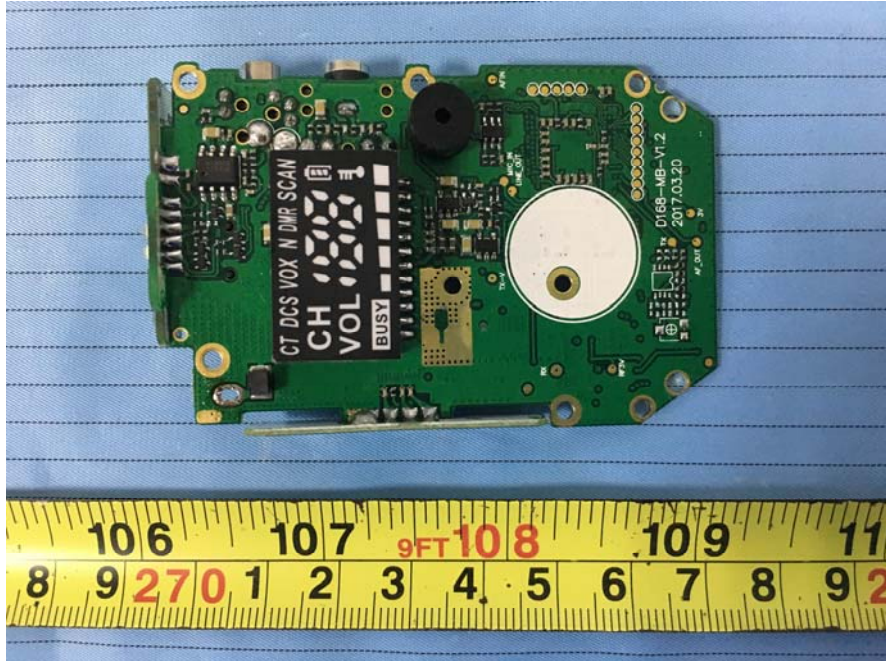
EUT – Cover off View 3



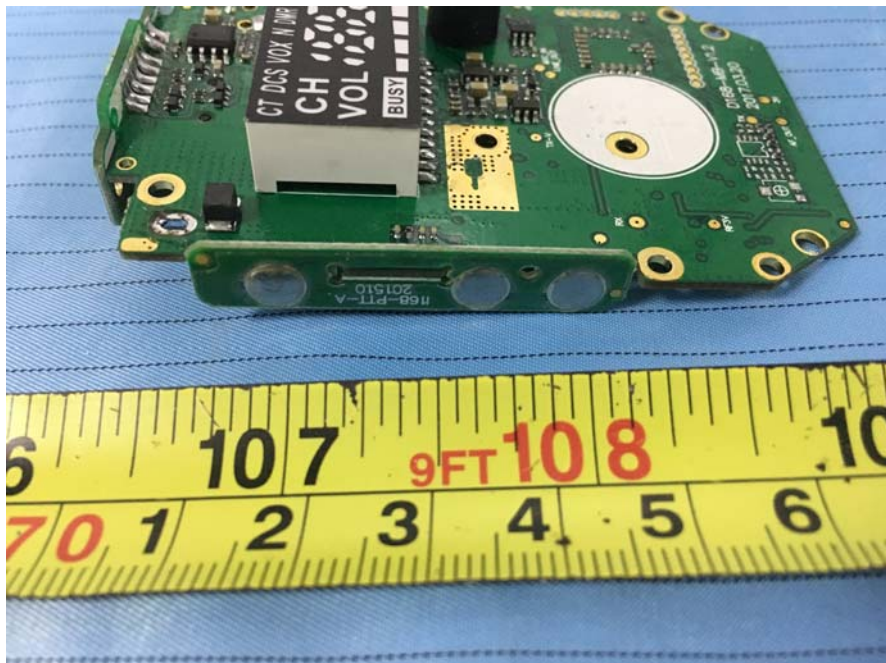
EUT – Main Board Top View



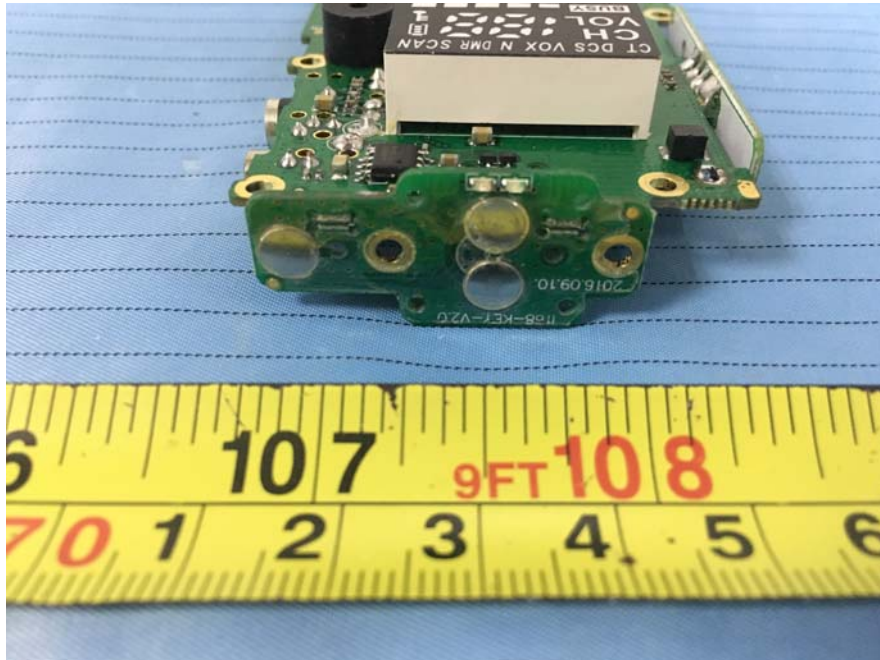
EUT – Main Board Bottom View



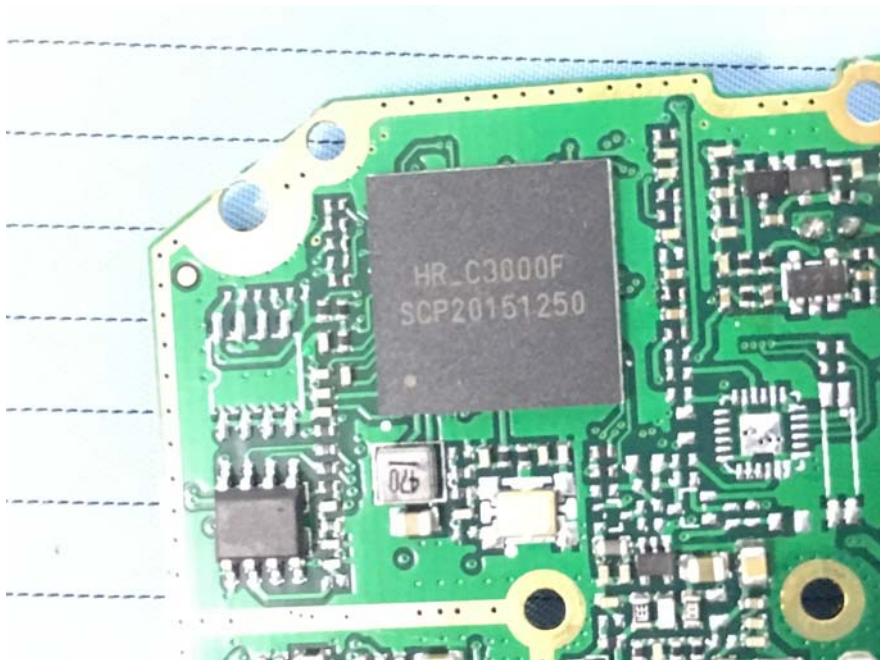
EUT – Keyboard View 1



EUT –Keyboard View 2



EUT –IC Main View



EUT – Battery View





EUT – Battery Label View

iradio Lithium battery
Battery Model: BC-168
DC 3.7V 1500mAh

⚠ Caution :

- Do not disassemble the battery
- Do not put the battery into the fire
- Do not short-circuit the battery
- Please use iradio designated charger



Li-ion

Iradio Electronics Co.,Ltd.