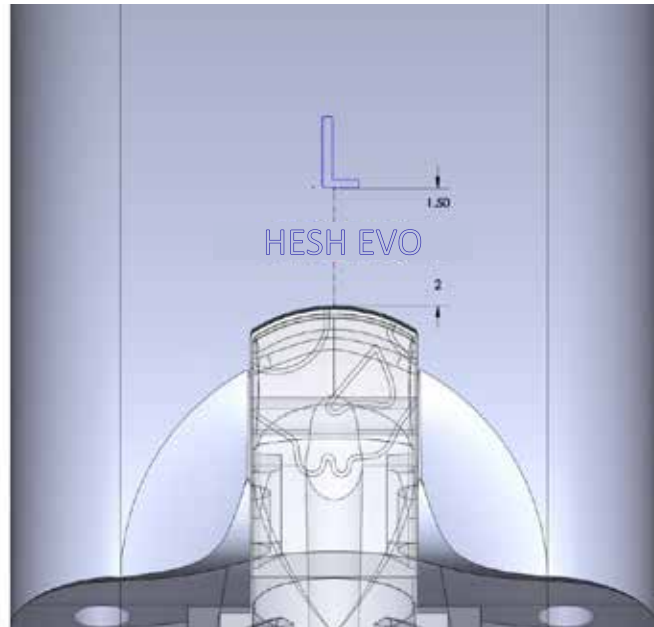


L/R Markings

In -Tool Deboss

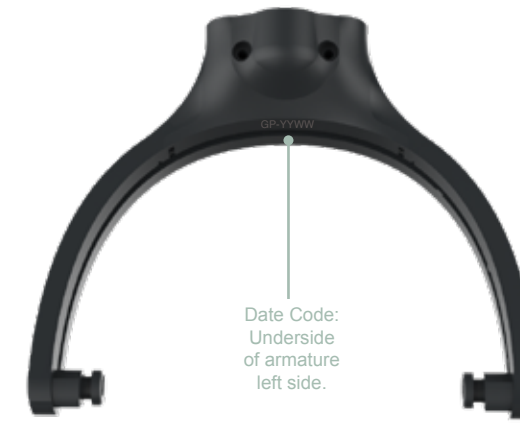
Date Code

Lazer Etch



L/R Marking
 Calibri Font: Calibri
 Size: 11pt

Model no. & Name size 1.20mm units
 Markings are to be 2mm from hinge top with a space of 1.5mm inbetween

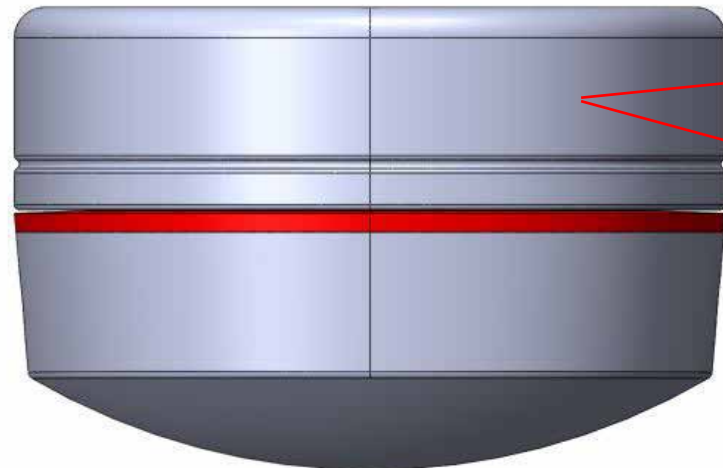


Date Code:
 Underside
 of armature
 left side.

2mm GP-YYWW
 FONT:
 2.0mm Calibri

Compliance Markings - Ear Cups

Pad Print / Gloss



TEIR 1 - ACTUAL SIZE

Right Earcup



Left Earcup

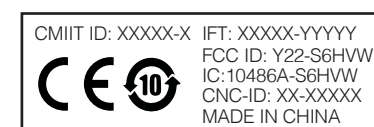
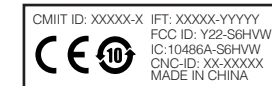


TEIR 2 - ACTUAL SIZE

Right Earcup



Left Earcup



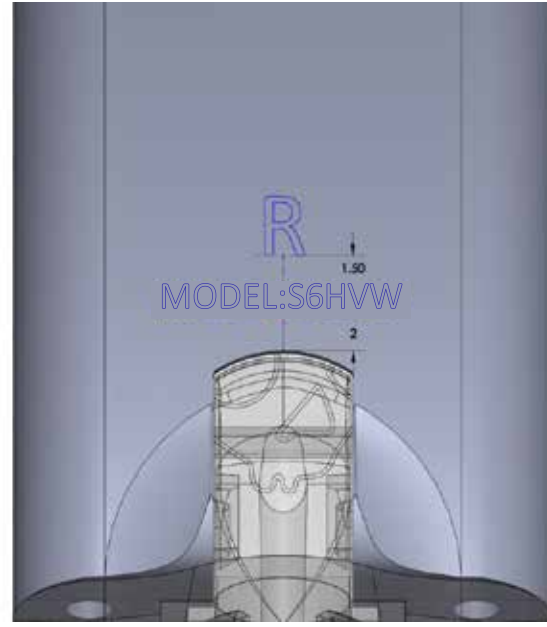
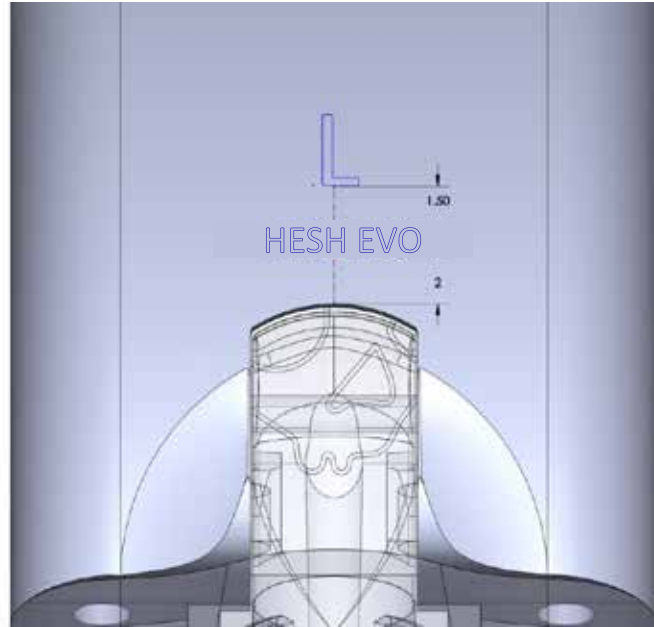
REV.	REMARKS	DESIGNER	DATE
A	Initial Compliance Release	KA	11/08/19
B	Updated Markings on ISC	KA	11/20/19
C	Updated Compliance Markings	KA	12/11/19
D	Compliance Markings- Moved KCC Mark, Fixed in tool marking callout	KA	12/12/19
E	Added CNCID# / Updated Taiwan logo and number	KA	01/28/20
F	Added # for (MIC R 018-200235) - Moved Marking to Teir 1	KA	07/27/20
G			
H			
I			

L/R Markings

In -Tool Deboss

Date Code

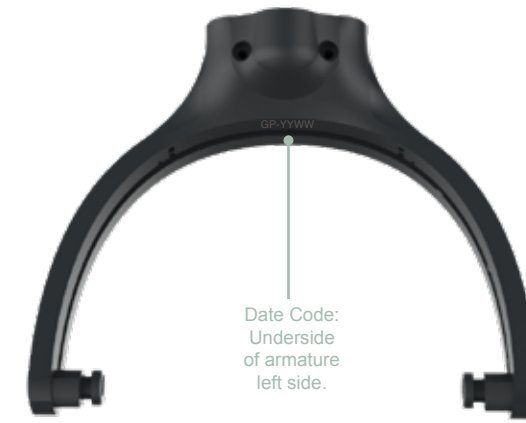
Lazer Etch



L/R Marking
Calibri Font: Calibri
Size: 11pt

Model no. & Name size 1.20mm units

Markings are to be 2mm from hinge top with a space of 1.5mm inbetween

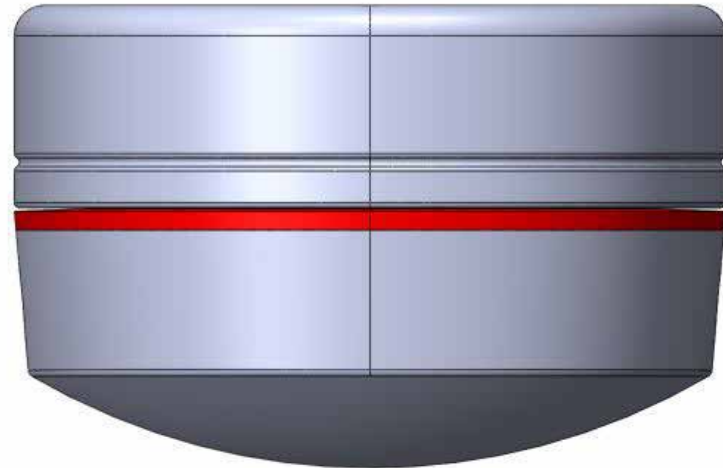


Date Code:
Underside
of armature
left side.

2mm  GP.YYWW
FONT:
2.0mm Calibri

Compliance Markings - Ear Cups

Pad Print / Gloss



TEIR 1 - ACTUAL SIZE

Right Earcup



Left Earcup

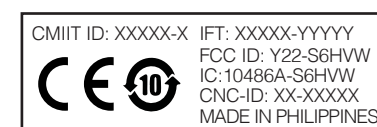
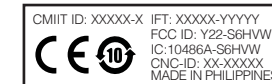


TEIR 2 - ACTUAL SIZE

Right Earcup



Left Earcup



REV.	REMARKS	DESIGNER	DATE
A	Initial Compliance Release - PHILIPPINES	KA	07/30/20
B			
C			
D			
E			
F			
G			
H			
I			