



**SAR Evaluation Report  
for  
FCC OET Bulletin 65 Supplement C  
and  
Industry Standard RSS-102 Issue**

**Report No.: 12-02-MAS-200-03**

Client: (1) CCT Marketing, Ltd. (USA)  
(2) CCT Tech Advanced Products Limited (Canada)  
FCC Product: DECT 6.0 Wee Voice Digital Monitor  
IC Product: DECT 6.0 Ultimate Digital Monitor  
FCC Model: MO119  
IC Model: MO104  
FCC ID: XYTBM1037H  
IC ID: 1945A-BM1037  
Manufacturer/supplier: Hui Yang CCT Telecommunications Products Co., Ltd.  
Date test item received: 2012/02/20  
Date test campaign completed: 2012/03/19  
Date of issue: 2012/03/19

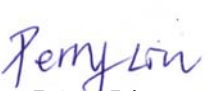
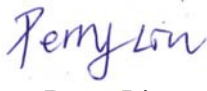
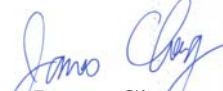
Test Result: ☒ Compliance ☐ Not Compliance

Statement of Compliance:

The SAR values measured for the test sample are below the maximum recommended level of 1.6 W/kg averaged over any 1g tissue according to FCC OET Bulletin 65 Supplement C (Edition 01-01) and Industry Canada RSS-102 (Issue 2, 2005).

**The test result only corresponds to the tested sample. It is not permitted to copy this report, in part or in full, without the permission of the test laboratory.**

*Total number of pages of this test report: 83 pages*

Test Engineer	Checked by	Approved by
 Perry Lin	 Perry Lin	 James Cheng

The testing described in this report has been carried out to the best of our knowledge and ability, and our responsibility is limited to the exercise of reasonable care. This certification is not intended to believe the sellers from their legal and/or contractual obligations.

## Applicant Information

<b>Client</b>	:	1) CCT Marketing, Ltd. 2) CCT Tech Advanced Products Limited
<b>Address</b>	:	1) 18/F, CCT Telecom Building, 11 Wo Shing Street, Fo Tan, Shatin N.T., HK 2) 18/F, CCT Telecom Building, 11 Wo Shing Street, Fo Tan, Shatin N.T., Hong Kong
<b>Manufacturer</b>	:	Hui Yang CCT Telecommunications Products Co., Ltd.
<b>Address</b>	:	SunTown, Huiyang District, Huizhou City, Guangdong Province, China
<b>ID EUT</b>	:	DECT 6.0 Wee Voice Digital Monitor
<b>IC EUT</b>	:	DECT 6.0 Ultimate Digital Monitor
<b>Trade name</b>	:	----
<b>ID Model No.</b>	:	MO119
<b>IC Model No.</b>	:	MO104
<b>Standard Applied</b>	:	FCC OET 65 Supplement C (Edition 01-01, June 2001) Industry Standard RSS-102 Issue 2 (November 2005) IEEE Standard 1528-2003 KDB: 447498 (12/02/2008)
<b>Test Location</b>	:	No.8, Lane 29, Wenming RD., LeShan Tsuen, GuiShan Shiang, Taoyuan County 33383, Taiwan, R.O.C.

**The DECT 6.0 Wee Voice Digital Monitor (DECT 6.0 Ultimate Digital Monitor) is in compliance with the FCC Report and Order 93-326 and Health Canada Safety Code 6, and the tests were performed according to the FCC OET65c and RSS-102 Issue 2 for uncontrolled exposure.**

# *Table of Contents*

<b>EXECUTIVE SUMMARY .....</b>	<b>5</b>
<b>1 GENERAL INFORMATION.....</b>	<b>6</b>
1.1 Description of Equipment Under Test .....	6
1.2 Photograph of EUT .....	6
1.3 Environment Conditions .....	7
1.4 FCC Requirements for SAR Compliance Testing .....	7
1.4.1 RF Exposure Limits .....	7
1.5 The SAR Measurement Procedure.....	8
1.5.1 General Requirements.....	8
1.5.2 Phantom Requirements .....	8
1.5.3 Test Positions .....	8
1.5.4 Test Procedures .....	9
<b>2 DESCRIPTION OF THE TEST EQUIPMENT .....</b>	<b>10</b>
2.1 Test Equipment List .....	10
2.2 DASY4 Measurement System Diagram .....	11
2.3 DASY4 Measurement Server.....	13
2.4 DAE (Data Acquisition Electronics).....	14
2.5 Phantom.....	15
2.6 Device Holder .....	16
2.7 Specifications of Probes .....	16
2.8 SAR Measurement Procedures in DASY4 .....	17
2.9 Simulating Liquids .....	17
2.10 System Performance Check .....	18
2.10.1 Purpose .....	18
2.10.2 System Performance Check Procedure.....	18
2.10.3 System Performance Check Setup.....	19
2.10.4 Result of System Performance Check: Valid Result .....	19
<b>3 RESULTS.....</b>	<b>20</b>
3.1 Summary of Test Results .....	20
3.2 Check the position for worst result .....	20
3.3 Measurement Position .....	21
3.3.1 EUT Position A.....	21
3.3.2 EUT Position B .....	21
3.3.3 EUT Position C .....	22
3.3.4 EUT Position D.....	22
3.3.5 EUT Position E .....	23
3.3.6 EUT Position F .....	23

<b>4</b>	<b>THE DESCRIPTION OF TEST PROCEDURE FOR FCC</b> .....	<b>24</b>
4.1	Scan Procedure.....	24
4.2	SAR Averaging Methods .....	24
4.3	Data Storage .....	24
4.4	Data Evaluation.....	25
<b>5</b>	<b>MEASUREMENT UNCERTAINTY</b> .....	<b>27</b>
6	References .....	28
<b>7</b>	<b>ANNEX : TEST RESULTS OF DASY4 (REFER TO ANNEX)</b> .....	<b>28</b>

## **Executive Summary**

The EUT is a DECT 6.0 Wee Voice Digital Monitor (DECT 6.0 Ultimate Digital Monitor) operating in the 1920 ~ 1930 MHz frequency range. The measurements was conducted by ETC and carried out with the dosimetric assessment system – DASY4.

The measurements of portable were conducted according to FCC OET 65 Supplement C [Reference 5] for evaluating compliance with requirements of FCC Report and Order 96-326 [Reference 3] and also according to Industry Standard RSS-102 Issue 2 [Reference 8] for evaluating compliance with requirements of Health Canada Safety Code 6[Reference 9].

The portable under test was set to TBR6 mode and established a connection with FP emulator. The specific FP emulator can setup a TBR6 connection with handset on different combination of carrier and time-slot in loopback of handset with PSRBS data type.

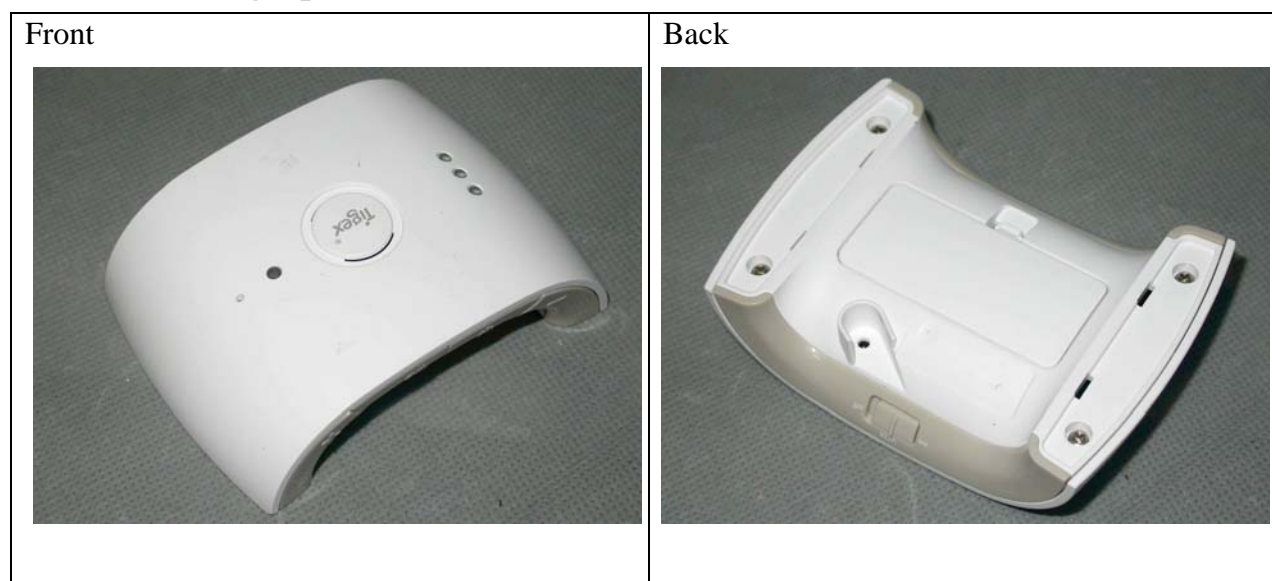
Another important factor is the Crest Factor when applying SAR testing to DECT. It is usually declared by customer or we would use a spectrum to scan the duty cycle in time domain when transmitting in case laking such information. It was 1:24 for this sample.

# 1 General Information

## 1.1 Description of Equipment Under Test

ID EUT Type	DECT 6.0 Wee Voice Digital Monitor
IC EUT Type	DECT 6.0 Ultimate Digital Monitor
Trade Name	----
ID Model Name	MO119
IC Model Name	MO104
Hardware version	N/A
Software version	N/A
Tx Frequency	1921.536 MHz ~ 1928.448 MHz
Rx Frequency	1921.536 MHz ~ 1928.448 MHz
Antenna Type	Monopole
Device Category	Portable Part
RF Exposure Environment	General Population / Uncontrolled
Power supply	Internal battery (NiMH / 3.7V / 550mAh)
Crest Factor	24

## 1.2 Photograph of EUT



### 1.3 Environment Conditions

Item	Target	Measured
Ambient Temperature (°C)	18 ~ 25	22 ± 1
Temperature of Simulant (°C)	20 ~ 24	22 ± 1
Relative Humidity (% RH)	30 ~ 70	60 ~ 70

### 1.4 FCC Requirements for SAR Compliance Testing

According to the FCC order “Guidelines for Evaluating the Environmental Effects of RF Radiation”, for consumer products, the SAR limit is **1.6 W/kg** for an uncontrolled environment and **8.0 W/kg** for an occupational/controlled environment. Pursuant to the Supplement C of OET Bulletin 65 “Evaluating Compliance with FCC Guide-lines for Human Exposure to Radio frequency Electromagnetic Fields”, released on June 29, 2001 by FCC, the equipment under test should be evaluated at maximum output power (radiated from the antenna) under “worst-case” conditions for intended or normal operation, incorporating normal antenna operating positions, equipment under test peak performance frequencies and positions for maximum RF power coupling.

#### 1.4.1 RF Exposure Limits

	Whole-Body	Partial-Body	Arms and Legs
<b>Population/Uncontrolled Environments (W/kg)</b>	0.08	1.6	4.0
<b>Occupational/Controlled Environments (W/kg)</b>	0.4	8.0	20.0

**Notes:**

1. Population/Uncontrolled Environments: Locations where there is the exposure of individuals who have no sense or control of their exposure.
2. Occupational/Controlled Environments: Locations where there is exposure that may be incurred by people who have knowledge of the potential for exposure.
3. Whole-Body: SAR is averaged over the entire body.
4. Partial-Body: SAR is averaged over any 1g of tissue volume as defined in specification.
5. Arms and Legs: SAR is averaged over 10g of tissue volume as defined in specification.

## 1.5 The SAR Measurement Procedure

### 1.5.1 General Requirements

The test should be performance in a laboratory without influence on SAR measurements by ambient RF sources and any reflection from the environment inside. The ambient temperature should be kept in the range of 18°C to 25°C with a maximum variation within  $\pm 2^{\circ}\text{C}$  during the test.

### 1.5.2 Phantom Requirements

The phantoms used in test are simplified representations of the human head and body as a specific shaped container for the head or body simulating liquids. The physical characteristics of the phantom models should resemble the head and the body of a mobile user since the shape is a dominant parameter for exposure. The shell of the phantom should be made of low loss and low permittivity material and the thickness tolerance should be less than 0.2 mm. In addition, the phantoms should provide simulations of both right and left hand operations.

### 1.5.3 Test Positions

Position	Description
A	The <b>Front side</b> of the EUT is in contact with the bottom of ELI4 phantom. The separation distance is 0mm between the rear site of the EUT and the bottom of the ELI4 phantom.
B	The <b>Back side</b> of the EUT is in contact with the bottom of ELI4 phantom. The separation distance is 0mm between the rear site of the EUT and the bottom of the ELI4 phantom
C	The <b>Right edge</b> of the EUT is in contact with the bottom of ELI4 phantom. The separation distance is 0mm between the bottom of the EUT and the bottom of the ELI4 phantom.
D	The <b>Left edge</b> of the EUT is in contact with the bottom of ELI4 phantom. The separation distance is 0mm between the bottom of the EUT and the bottom of the ELI4 phantom.
E	The <b>Top edge</b> of the EUT is in contact with the bottom of ELI4 phantom. The separation distance is 0mm between the right site of the EUT and the bottom of the ELI4 phantom.
F	The <b>Bottom edge</b> of the EUT is in contact with the bottom of ELI4 phantom. The separation distance is 0mm between the right site of the EUT and the bottom of the ELI4 phantom.



#### **1.5.4 Test Procedures**

The SAR test should be performed with both Cheek Position mentioned above.

At first, to use the center frequency of each available operating band to apply SAR measurements on six modes: Front-Cheek, Back-Cheek, Left-Cheek ,Right-Cheek,Top-Cheek, Bottom-Cheek And the second step, to apply the low-end and high-end frequencies of SAR measurements respectively to the mode which the maximum mass-averaged SAR happens. For portable with extendable antenna, all of the tests mentioned above should be performed with the antenna in fully extended and fully retracted modes.

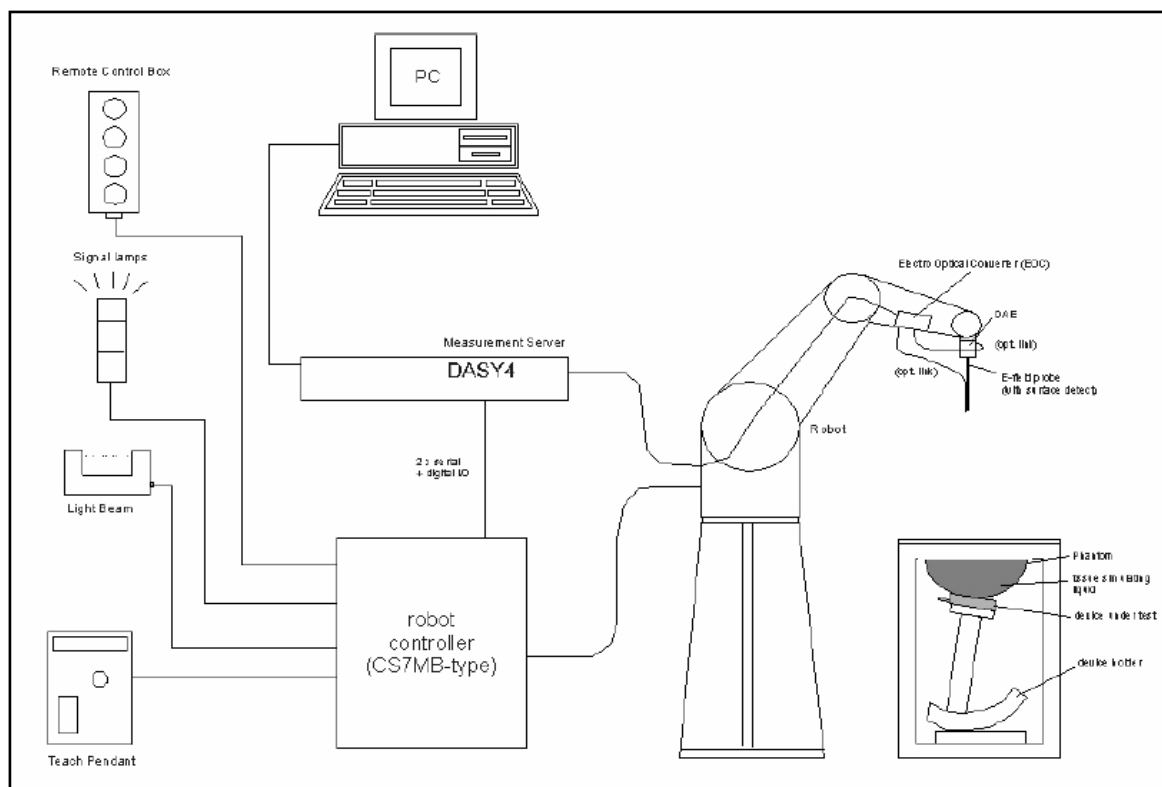
## 2 Description of the Test Equipment

The measurements were performed using an automated near-field scanning system, DASY4 software, manufactured by Schmid & Partner Engineering AG (SPEAG) in Switzerland. The SAR extrapolation algorithm used in all measurements on the test device was the ‘worstcase extrapolation’ algorithm.

### 2.1 Test Equipment List

Equipment	Manufacturer	Type	S/N	Calibration Expiry
Robot	Staubli	RX90B L	F03/5W16A1/A/01	(not necessary)
Robot Controller	Staubli	CS7MB	F03/5W16A1/C/01	(not necessary)
Teach Pendant	Staubli	-----	D221340061	(not necessary)
DAE4	Schmid & Partner Engineering AG	-----	629	2012-09-22
E-field Probe	Schmid & Partner Engineering AG	EX3DV4	3555	2012-09-28
Dipole Validation Kit	Schmid & Partner Engineering AG	D1900V2	5d054	2012-09-16
Thermo-Hygro.meter	TFA	-----	-----	2012-06-20
Directional Coupler	Amplifier Research	DC7420	310569	2012-09-01
DASY4 Software	Schmid & Partner Engineering AG	-----	Version 4.6B23	To automatically control the robot and perform the SAR measurement
SEMCAD Software	Schmid & Partner Engineering AG	-----	Version 1.8B160	Post-processing and report management
Signal Generator	Agilent	83640B	3844A01143	2012-10-03
Amplifier	Mini-Circuits	ZHL-42W	D111704-01-02	2012-09-05
Power Meter	BOONTON	4532-0102	136601	2012-06-19
Power Sensor	BOONTON	51011-EMC	32861	2012-06-19
S-Parameter Network Analyzer	Agilent	8753ES	MY40001340	2013-02-15
Calibration Kit	Agilent	85033C	2920A03287	(not necessary)
Dielectric Probe Kit	Agilent	85070E	MY44300101	(not necessary)

## 2.2 DASY4 Measurement System Diagram



**Fig. 1 The DASY4 Measurement System**



**Fig. 2 The DASY4 System Photo**

The DASY4 system consists of the following items:

- A fixed-on-ground high precision 6-axis robot with controller and software and an arm extension for moving the Data Acquisition Electronics (DAE) and Probe.
- A dosimetric probe, an isotropic E-field probe optimized and calibrated for usage in head or body tissue simulating liquids. Some of the probes are equipped with an optical surface detector system.
- A Data Acquisition Electronic (DAE) performing the signal amplification, signal multiplexing, AD-conversion, offset measurements, mechanical surface detection, collision detection, etc. DAE is powered with standard or rechargeable batteries. The signal is optically transmitted to the EOC.
- A unit to operate the optical surface detector which is connected to Electro-Optical Coupler (EOC).
- The EOC performs the conversion from the optical into a digital electric signal of the DAE. The EOC is connected to the DASY4 measurement server.
- The DASY4 measurement server performing all real-time data evaluation for field measurements and surface detection, controlling robot movements and handling safety operation. A computer with operating Windows 2000 is used for server.
- DASY4 software and SEMCAD data evaluation software are installed in PC.
- Remote control with teach panel and additional circuitry for robot safety such as warning lamps, etc.
- The generic twin phantom enabling the testing of left-hand and right-hand usage.
- The device holder for handheld mobile phones.
- Tissue simulating liquid mixed well according to the given recipes.
- System validation dipoles is used to validate the proper functioning of the system

## 2.3 DASY4 Measurement Server



**Fig. 3 DASY4 Measurement Server**

The DASY4 measurement server is based on a PC/104 CPU board with a 166MHz low-power pentium, 32MB chipdisk and 64MB RAM. The necessary circuits for communication with either the DAE4 (or DAE3) electronic box as well as the 16-bit AD-converter system for optical detection and digital I/O interface are contained on the DASY4 I/O-board, which is directly connected to the PC/104 bus of the CPU board.

The measurement server performs all real-time data evaluation for field measurements and surface detection, controls robot movements and handles safety operation. The PC-operating system cannot interfere with these time critical processes. All connections are supervised by a watchdog, and disconnection of any of the cables to the measurement server will automatically disarm the robot and disable all program-controlled robot movements. Furthermore, the measurement server is equipped with two expansion slots which are reserved for future applications. Please note that the expansion slots do not have a standardized pinout and therefore only the expansion cards provided by SPEAG can be inserted. Expansion cards from any other supplier could seriously damage the measurement server.

## 2.4 DAE (Data Acquisition Electronics)



**Fig. 4 DAE Photo**

Some probes are equipped with an optical multifiber line, ending at the front of the probe tip. This line is connected to the EOC box on the robot arm and provides automatic detection of the phantom surface. Half of the fibers are connected to a pulsed infrared transmitter, the other half to a synchronized receiver. If the probe approaches the surface, the reflection from the surface produces a coupling from the transmitting to the receiving fibers. This reflection increases during the approach, reaches a maximum and then decreases. If the probe perpendicularly touches the surface, the coupling is zero. The distance of the coupling maximum to the surface is independent of the surface reflectivity and largely independent of the surface to probe angle. The DASY4 software reads the reflection during a software approach and looks for the maximum using a 2<sup>nd</sup> order fitting. The approach is stopped upon reaching the maximum.

The optical surface detection works in transparent liquids and on di\_use reflecting surfaces with a repeatability of better than  $\pm 0.1\text{mm}$ . The distance of the maximum depends on the fiber and the surrounding media. It is typically 1.0mm to 2.0mm in tissue simulating mixtures. The distance can be measured with the surface check job (described in the reference guide).

## 2.5 Phantom

### SAM Twin Phantom V4.0:

The phantom used for all tests i.e. for both system performance checking and device testing, was the twinheaded "SAM Twin Phantom V4.0", manufactured by SPEAG. The phantom conforms to the requirements of IEEE 1528 - 2003.

### SAM Phantom ELI4:

Phantom for compliance testing of handheld and body mounted wireless devices in the frequency range of 30 MHz to 6 GHz. ELI4 is fully compatible with the latest draft of the standard IEC 62209-2. ELI4 has been optimized regarding its performance and can be integrated into our standard phantom tables. A cover prevents evaporation of the liquid.



**Fig. 5 SAM Twin Phantom and ELI4 Phantom**

## 2.6 Device Holder

The device was placed in the device holder (illustrated below) that is supplied by SPEAG as an integrated part of the Dasy system.



**Fig. 6 Device holder supplied by SPEAG**

## 2.7 Specifications of Probes

The E-Field Probes ET3DV6 or EX3DV4, manufactured and calibrated annually by Schmid & Partner Engineering AG with following specification are used for the dosimetric measurements.

### **ET3DV6:**

- Dynamic range:  $5 \mu\text{W/g} \sim 100 \text{ mW/g}$
- Tip diameter: 6.8 mm
- Probe linearity:  $\pm 0.2 \text{ dB}$  (30MHz to 3 GHz)
- Axial isotropy:  $\pm 0.2 \text{ dB}$
- Spherical isotropy:  $\pm 0.4 \text{ dB}$
- Distance from probe tip to dipole centers: 2.7 mm
- Calibration range: 900MHz/1750MHz/1900MHz/ /2450MHz for head and body simulating liquids.

### **EX3DV4:**

- Dynamic range:  $10 \mu\text{W/g} \sim 100 \text{ mW/g}$
- Tip diameter: 2.5 mm
- Probe linearity:  $\pm 0.2 \text{ dB}$  (30MHz to 3 GHz)
- Axial isotropy:  $\pm 0.2 \text{ dB}$
- Spherical isotropy:  $\pm 0.4 \text{ dB}$
- Distance from probe tip to dipole centers: 1.0 mm
- Calibration range: 900MHz/1810MHz for head simulating liquid and



## 2.8 SAR Measurement Procedures in DASY4

### Step 1 Setup a Call Connection

Establish a call in handset at the maximum power level with a base station simulator via air interface.

### Step 2 Power Reference Measurement

To measure the local E-field value at a fixed location which value will be taken as a reference value for calculating a possible power drift.

### Step 3 Area Scan

To measure the SAR distribution with a grid with spacing of 15 mm x 15 mm and kept with a constant distance to the inner surface of the phantom. Additional all peaks within 3 dB of the maximum SAR are searched.

### Step 4 Zoom Scan

At these points (maximum number of SAR peaks is two), a cube of 32 mm x 32 mm x 30 mm is applied to and measured with 5 x 5 x 7 points. With these measured data, a peak spatial-average SAR value can be calculated by SEMCAD software.

### Step 5 Power Drift Measurement

Repetition of the E-field measurement at the fixed location mentioned in Step 1 to make sure the two results differ by less than  $\pm 0.2$  dB.

## 2.9 Simulating Liquids

Liquid Recipes for this test report are as following:

### BSL 1900MHz band (Body)

Ingredient	% by weight
Water	63.54
DGBE	36.25
Salt	0.21

## 2.10 System Performance Check

### 2.10.1 Purpose

1. To verify the simulating liquids are valid for testing.
2. To verify the performance of testing system is valid for testing.

### 2.10.2 System Performance Check Procedure

The DASY4 installation includes predefined files with recommended procedures for measurements and the system performance check. They are read-only document files and destined as fully defined but unmeasured masks, so the finished system performance check must be saved under a different name. The system performance check document requires the SAM Twin Phantom, so this phantom must be properly installed in your system. (User defined measurement procedures can be created by opening a new document or editing an existing document file). Before you start the system performance check, you need only to tell the system with which components (probe, medium, and device) you are performing the system performance check; the system will take care of all parameters.

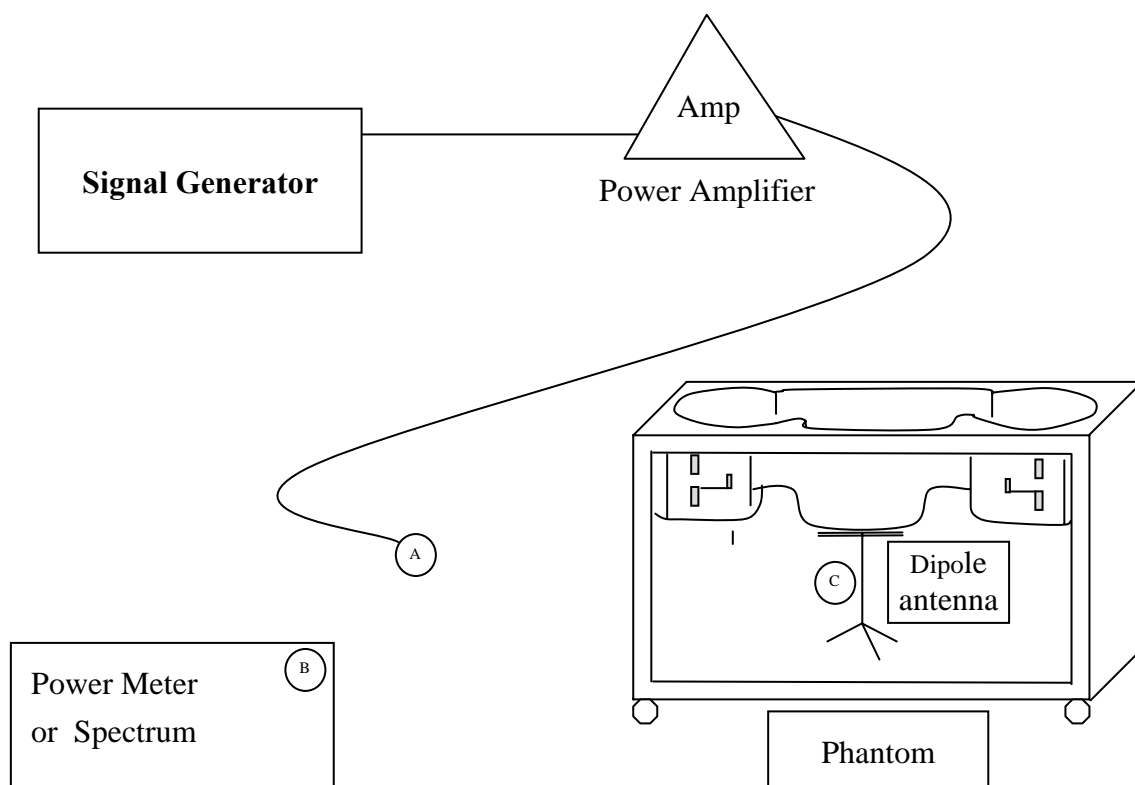
- **The Power Reference Measurement and Power Drift Measurement** jobs are located at the beginning and end of the batch process. They measure the field drift at one single point in the liquid over the complete procedure. The indicated drift is mainly the variation of the amplifier output power. If it is too high (above  $\pm 0.1$  dB), the system performance check should be repeated; some amplifiers have very high drift during warm-up. A stable amplifier gives drift results in the DASY system below  $\pm 0.02$  dB.

- **The Surface Check** job tests the optical surface detection system of the DASY system by repeatedly detecting the surface with the optical and mechanical surface detector and comparing the results. The output gives the detecting heights of both systems, the difference between the two systems and the standard deviation of the detection repeatability. Air bubbles or refraction in the liquid due to separation of the sugar-water mixture gives poor repeatability (above  $\pm 0.1$  mm). In that case it is better to abort the system performance check and stir the liquid.

- **The Area Scan** job measures the SAR above the dipole on a plane parallel to the surface. It is used to locate the approximate location of the peak SAR. The proposed scan uses large grid spacing for faster measurement; due to the symmetric field, the peak detection is reliable. Schmid & Partner Engineering AG, DASY4 Manual, February 2005 16-2 System Performance Check Application Notes If a finer graphic is desired, the grid spacing can be reduced. Grid spacing and orientation have no influence on the SAR result.

- **The Zoom Scan** job measures the field in a volume around the peak SAR value assessed in the previous Area Scan job (for more information see the application note on SAR evaluation). If the system performance check gives reasonable results, the SAR peak, 1 g and 10 g spatial average SAR values normalized to 1W dipole input power give reference data for comparisons. The next sections analyze the expected uncertainties of these values, as well as additional checks for further information or troubleshooting.

### 2.10.3 System Performance Check Setup



Note :

1. A connected to B is used to make sure whether the input power is 250mW for target frequency..
2. A connected to C is used to input the measured power to dipole antenna

### 2.10.4 Result of System Performance Check: Valid Result

**Diepole Antenna:** D1900V2 (S/N: 5d054)

Date of Measurement And Reference Value	SAR@1g [W/kg]	Dielectric Parameters		Temperature [°C]
		$\epsilon_r$	$\sigma$ [S/m]	
Body 1900MHz Recommended Value	10.1 $\pm$ 10% [9.09 ~ 11.11]	53.1 $\pm$ 5% [50.45 ~ 55.76]	1.54 $\pm$ 5% [1.54 ~ 1.62]	22.0 $\pm$ 2 [20 ~ 24]
2012-02-21	10.1	55.5	1.44	22.5

### 3 Results

#### 3.1 Summary of Test Results

No deviations from the technical specification(s) were ascertained in the course of the tests performed.	<input checked="" type="checkbox"/>
The deviations as specified in this chapter were ascertained in the course of the tests Performed.	<input type="checkbox"/>

#### 3.2 Check the position for worst result

Frequency		Position	Conducted Power (dBm)			SAR@1g [W/kg]	Power Drift (dB)	Note
CH	MHz		Before	After	Drift			
2	1924.992	A	18.7	18.62	0.08	0.00176	0.001	
0	1928.448	A	18.65	18.6	0.05	0.00355	-0.193	
4	1921.536	A	18.78	18.65	0.13	0.00349	-0.129	
2	1924.992	B	18.7	18.58	0.12	0.0275	0.186	
0	1928.448	B	18.65	18.52	0.13	0.028	0.17	
4	1921.536	B	18.78	18.66	0.12	0.0284	0.119	Worst
2	1924.992	C	18.7	18.5	0.2	0.00185	-0.112	
0	1928.448	C	18.65	18.55	0.1	0.0023	0.152	
4	1921.536	C	18.78	18.69	0.09	0.00231	0.141	
2	1924.992	D	18.7	18.5	0.2	0.00226	0.128	
0	1928.448	D	18.65	18.6	0.05	0.00237	-0.189	
4	1921.536	D	18.78	18.68	0.1	0.00227	0.166	
2	1924.992	E	18.7	18.51	0.19	0.00252	0.159	
0	1928.448	E	18.65	18.54	0.11	0.00273	0.138	
4	1921.536	E	18.78	18.67	0.11	0.00311	0.185	
2	1924.992	F	18.7	18.53	0.17	0.00349	-0.136	
0	1928.448	F	18.65	18.58	0.07	0.00337	0.131	
4	1921.536	F	18.78	18.6	0.18	0.00409	0.094	

The Max Body SAR@1900MHz@1g was **0.0284**W/kg, less than limitation of 1.6 W/kg.

### 3.3 Measurement Position

#### 3.3.1 EUT Position A



At Position A, the EUT to the ELI4 phantom distance is 0 mm.

#### 3.3.2 EUT Position B



At Position B, the EUT to the ELI4 phantom distance is 0 mm.

### 3.3.3 EUT Position C



At Position C, the EUT to the ELI4 phantom distance is 0 mm.

### 3.3.4 EUT Position D



At Position D, the EUT to the ELI4 phantom distance is 0 mm.

### 3.3.5 EUT Position E



At Position E, the EUT to the ELI4 phantom distance is 0 mm.

### 3.3.6 EUT Position F



At Position F, the EUT to the ELI4 phantom distance is 0 mm.

## **4 The Description of Test Procedure for FCC**

### **4.1 Scan Procedure**

First coarse scans were used for determination of the field distribution. Next a cube scan, 5x5x7 points covering a volume of 32x32x30mm was performed around the highest E-field value to determine the averaged SAR value. Drift was determined by measuring the same point at the start of the coarse scan and again at the end of the cube scan.

### **4.2 SAR Averaging Methods**

The maximum SAR value was averaged over a cube of tissue using interpolation and extrapolation. The interpolation, extrapolation and maximum search routines within Dasy4 are all based on the modified Quadratic Shepard's method (Robert J. Renka, "Multivariate Interpolation Of Lagre Sets Of Scattered Data", University of North Texas ACM Transactions on Mathematical Software, vol. 14, no. 2, June 1988, pp. 139-148).

The interpolation scheme combines a least-square fitted function method with a weighted average method. A trivariate 3-D / bivariate 2-D quadratic function is computed for each measurement point and fitted to neighbouring points by a least-square method. For the cube scan, inverse distance weighting is incorporated to fit distant points more accurately. The interpolating function is finally calculated as a weighted average of the quadratics. In the cube scan, the interpolation function is used to extrapolate the Peak SAR from the deepest measurement points to the inner surface of the phantom.

### **4.3 Data Storage**

The DASY4 software stores the assessed data from the data acquisition electronics as raw data (in microvolt readings from the probe sensors), together with all the necessary software parameters for the data evaluation (probe calibration data, liquid parameters and device frequency and modulation data) in measurement files with the extension .DA4. The postprocessing software evaluates the desired unit and format for output each time the data is visualized or exported. This allows verification of the complete software setup even after the measurement and allows correction of erroneous parameter settings.

The measured data can be visualized or exported in different units or formats, depending on the selected probe type (e.g., [V/m], [A/m] or [W/kg]). Some of these units are not available in certain situations or give meaningless results, e.g., a SAR-output in a lossless media will always be zero. Raw data can also be exported to perform the evaluation with other software packages.



## 4.4 Data Evaluation

The DASY4 postprocessing software (SEMCAD) automatically executes the following procedures to calculate the field units from the microvolt readings at the probe connector. The parameters used in the evaluation are stored in the configuration modules of the software:

Probe parameters:	- Sensitivity	$Norm_i, a_{i0}, a_{i1}, a_{i2}$
	- Conversion factor	$ConvF_i$
	- Diode compression point	$dcp_i$
Device parameters:	- Frequency	$f$
	- Crest factor	$cf$
Media parameters:	- Conductivity	$\sigma$
	- Density	$\rho$

These parameters must be set correctly in the software. They can be found in the component documents or they can be imported into the software from the configuration files issued for the DASY components. In the direct measuring mode of the multimeter option, the parameters of the actual system setup are used. In the scan visualization and export modes, the parameters stored in the corresponding document files are used.

The first step of the evaluation is a linearization of the filtered input signal to account for the compression characteristics of the detector diode. The compensation depends on the input signal, the diode type and the DC-transmission factor from the diode to the evaluation electronics. If the exciting field is pulsed, the crest factor of the signal must be known to correctly compensate for peak power. The formula for each channel can be given as:

$$V_i = U_i + U_i^2 \cdot \frac{cf}{dcp_i}$$

with $V_i$	= compensated signal of channel i	(i = x, y, z)
$U_i$	= input signal of channel i	(i = x, y, z)
$cf$	= crest factor of exciting field	(DASY parameter)
$dcp_i$	= diode compression point	(DASY parameter)

From the compensated input signals the primary field data for each channel can be evaluated:

$$\text{E – fieldprobes : } E_i = \sqrt{\frac{V_i}{Norm_i \cdot ConvF}}$$

$$\text{H – fieldprobes : } H_i = \sqrt{V_i} \cdot \frac{a_{i0} + a_{i1}f + a_{i2}f^2}{f}$$

with  $V_i$  = compensated signal of channel i (i = x, y, z)  
 $Norm_i$  = sensor sensitivity of channel i (i = x, y, z)  
 $\mu V/(V/m)^2$  for E-field Probes  
 $ConvF$  = sensitivity enhancement in solution  
 $a_{ij}$  = sensor sensitivity factors for H-field probes  
 $f$  = carrier frequency [GHz]  
 $E_i$  = electric field strength of channel i in V/m  
 $H_i$  = magnetic field strength of channel i in A/m

The RSS value of the field components gives the total field strength (Hermitian magnitude):

$$E_{tot} = \sqrt{E_x^2 + E_y^2 + E_z^2}$$

The primary field data are used to calculate the derived field units.

$$SAR = E_{tot}^2 \cdot \frac{\sigma}{\rho \cdot 1'000}$$

with  $SAR$  = local specific absorption rate in mW/g  
 $E_{tot}$  = total field strength in V/m  
 $\sigma$  = conductivity in [mho/m] or [Siemens/m]  
 $\rho$  = equivalent tissue density in g/cm<sup>3</sup>

Note that the density is set to 1, to account for actual head tissue density rather than the density of the tissue simulating liquid.

## 5 Measurement Uncertainty

Error Description	Unc. value $\pm\%$	Prob. Dist.	Div.	$C_i$ (1g)	$C_i$ (10g)	Std. Unc. $\pm\%$ (1g)	Std. Unc. $\pm\%$ (10g)	$v_i(v_{eff})$
<b>Measurement System</b>								
Probe Calibration	$\pm 6.6$	N	1	1	1	$\pm 6.6$	$\pm 6.6$	$\infty$
Axial Isotropy	$\pm 0.3$	R	$\sqrt{3}$	0.7	0.7	$\pm 0.1$	$\pm 0.1$	$\infty$
Hemispherical Isotropy	$\pm 1.3$	R	$\sqrt{3}$	0.7	0.7	$\pm 0.5$	$\pm 0.5$	$\infty$
Boundary Effects	$\pm 0.5$	R	$\sqrt{3}$	1	1	$\pm 0.3$	$\pm 0.3$	$\infty$
Linearity	$\pm 0.3$	R	$\sqrt{3}$	1	1	$\pm 0.2$	$\pm 0.2$	$\infty$
System Detection Limits	$\pm 1.0$	R	$\sqrt{3}$	1	1	$\pm 0.6$	$\pm 0.6$	$\infty$
Readout Electronics	$\pm 0.3$	N	1	1	1	$\pm 0.3$	$\pm 0.3$	$\infty$
Response Time	$\pm 0.8$	R	$\sqrt{3}$	1	1	$\pm 0.5$	$\pm 0.5$	$\infty$
Integration Time	$\pm 2.6$	R	$\sqrt{3}$	1	1	$\pm 1.5$	$\pm 1.5$	$\infty$
RF Ambient Conditions	$\pm 3.0$	R	$\sqrt{3}$	1	1	$\pm 1.7$	$\pm 1.7$	$\infty$
Probe Positioner	$\pm 0.4$	R	$\sqrt{3}$	1	1	$\pm 0.2$	$\pm 0.2$	$\infty$
Probe Positioning	$\pm 2.9$	R	$\sqrt{3}$	1	1	$\pm 1.7$	$\pm 1.7$	$\infty$
Max. SAR Evaluation	$\pm 1.0$	R	$\sqrt{3}$	1	1	$\pm 0.6$	$\pm 0.6$	$\infty$
<b>Test Sample Related</b>								
Test Sample Positioning	$\pm 2.9$	N	1	1	1	$\pm 2.9$	$\pm 2.9$	145
Device Holder Uncertainty	$\pm 3.6$	N	1	1	1	$\pm 3.6$	$\pm 3.6$	5
SAR Drift Measurement	$\pm 5.0$	R	$\sqrt{3}$	1	1	$\pm 2.9$	$\pm 2.9$	$\infty$
<b>Phantom and Setup</b>								
Phantom Uncertainty	$\pm 4.0$	R	$\sqrt{3}$	1	1	$\pm 2.3$	$\pm 2.3$	$\infty$
Liquid Conductivity(target)	$\pm 5.0$	R	$\sqrt{3}$	0.64	0.43	$\pm 1.8$	$\pm 1.2$	$\infty$
Liquid Conductivity(meas.)	$\pm 2.5$	N	1	0.64	0.43	$\pm 1.6$	$\pm 1.1$	$\infty$
Liquid Permittivity(target)	$\pm 5.0$	R	$\sqrt{3}$	0.6	0.49	$\pm 1.7$	$\pm 1.4$	$\infty$
Liquid Permittivity(meas.)	$\pm 2.5$	N	1	0.6	0.49	$\pm 1.5$	$\pm 1.2$	$\infty$
Combined Std. Uncertainty						$\pm 10.0$	$\pm 9.7$	330
Expanded STD Uncertainty (k=2)						$\pm 19.9$	$\pm 19.4$	

## 6 References

### 1. [ANSI/IEEE C95.1-1992]

Safety Levels with Respect to Human Exposure to Radio Frequency Electromagnetic Fields, 3 kHz to 300 GHz. The Institute of Electrical and Electronics Engineers, Inc. (IEEE), 1992.

### 2. [ANSI/IEEE C95.3-1992]

Recommended Practice for the Measurement of Potentially Hazardous Electromagnetic Fields - RF and Microwave". The Institute of Electrical and Electronics Engineers, Inc. (IEEE), 1992.

### 3. [FCC Report and Order 96-326]

Federal Communications Commission, "Report and order: Guidelines for evaluating the environmental effects of radiofrequency radiation", Tech. Rep. FCC 96-326, 1996.

### 4. [FCC OET Bulletin 65]

Evaluating Compliance with FCC Guidelines for Human Exposure to Radiofrequency Electromagnetic Fields. OET Bulletin 65 Edition 97-01, August 1997. Federal Communications Commission (FCC), Office of Engineering & Technology. (OET)

### 5. [FCC OET Bulletin 65 Supplement C]

Additional Information for Evaluating Compliance of Mobile and Portable Device with FCC Limits for Human Exposure to Radiofrequency Emissions. Supplement C (Edition 01-01) to OET Bulletin 65, June 2001. Federal Communications Commission (FCC), Office of Engineering & Technology. (OET)

### 6. [DASY 4]

Schmid & Partner Engineering AG: DASY 4 Manual, September 2005.

### 7. [IEEE 1528-2003]

IEEE Std 1528-2003: IEEE Recommended Practice for Determining the Peak Spatial-Average Specific Absorption Rate (SAR) in the Human Head from Wireless Communications Devices: Measurement Techniques. 1528-2003, 19<sup>th</sup> December, 2003, The Institute of Electrical and Electronics Engineers, Inc. (IEEE).

### 8. [RSS-102, Issue 2]

Radio Standards Specification 102, Radio Frequency Exposure Compliance of Radiocommunication Apparatus (All Frequency Bands) sets out the requirements and measurement techniques used to evaluate radio frequency (RF) exposure compliance of radiocommunication apparatus designed to be used within the vicinity of the human body. November, 2005. Industry Canada.

### 9. [Health Canada Safety Code 6]

Canada's Safety Code 6: Limits of Human Exposure to Radiofrequency Electromagnetic Fields in the Frequency Range from 3 kHz to 300 GHz (99-EHD-237)

## 7 Annex : Test Results of DASY4 (Refer to ANNEX)

# **ANNEX**

## **Index of Annex**

<b>ANNEX A: CONSTRUCTION PHOTOS OF EUT.....</b>	<b>30</b>
<b>ANNEX B: SAR RESULTS.....</b>	<b>36</b>
<b>ANNEX C: DIPOLE CERTIFICATE.....</b>	<b>59</b>
<b>ANNEX D: PROBE CERTIFICATE.....</b>	<b>68</b>

## ANNEX A: CONSTRUCTION PHOTOS OF EUT

### 1. Outside view 1 of EUT



### 2. Outside view 2 of EUT



3. Outside view 1 of Adapter



4. Outside view 2 of Adapter





5. Outside view 3 of Adapter



6. Inside View 1 of EUT

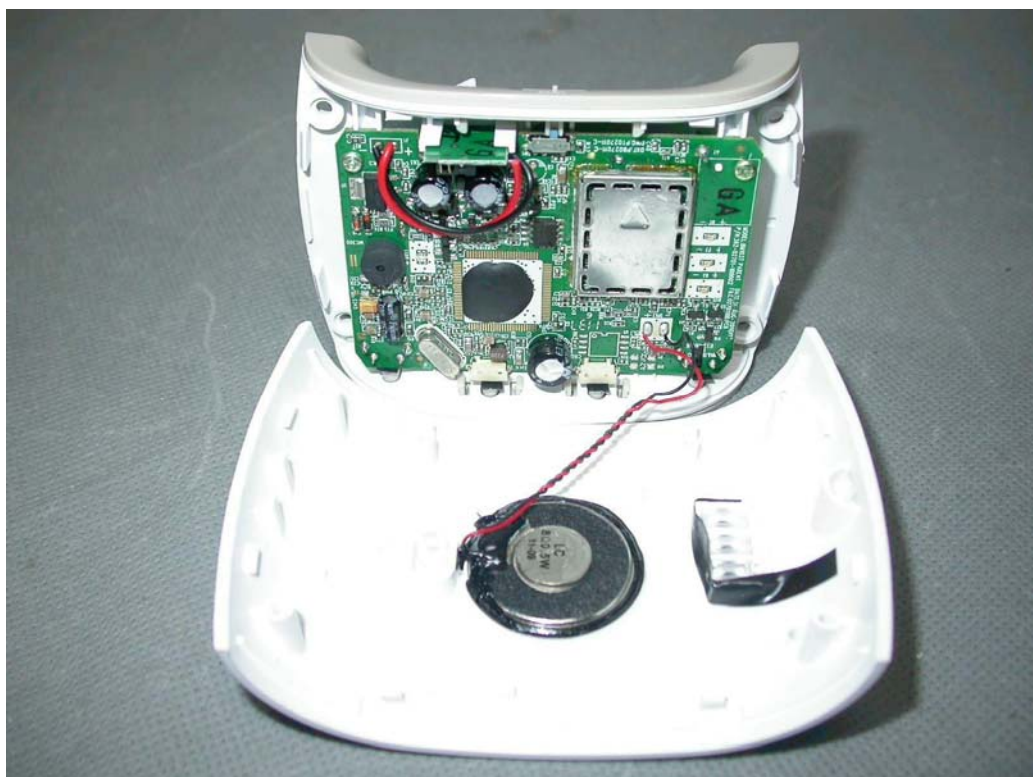




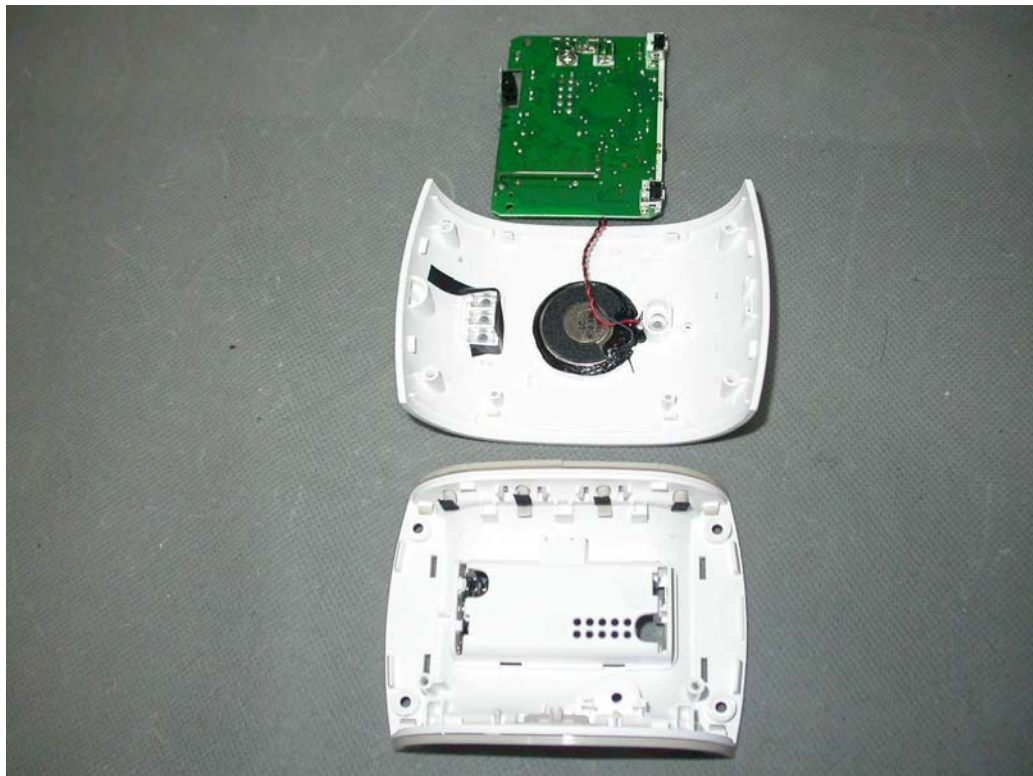
7. Inside View 2 of EUT



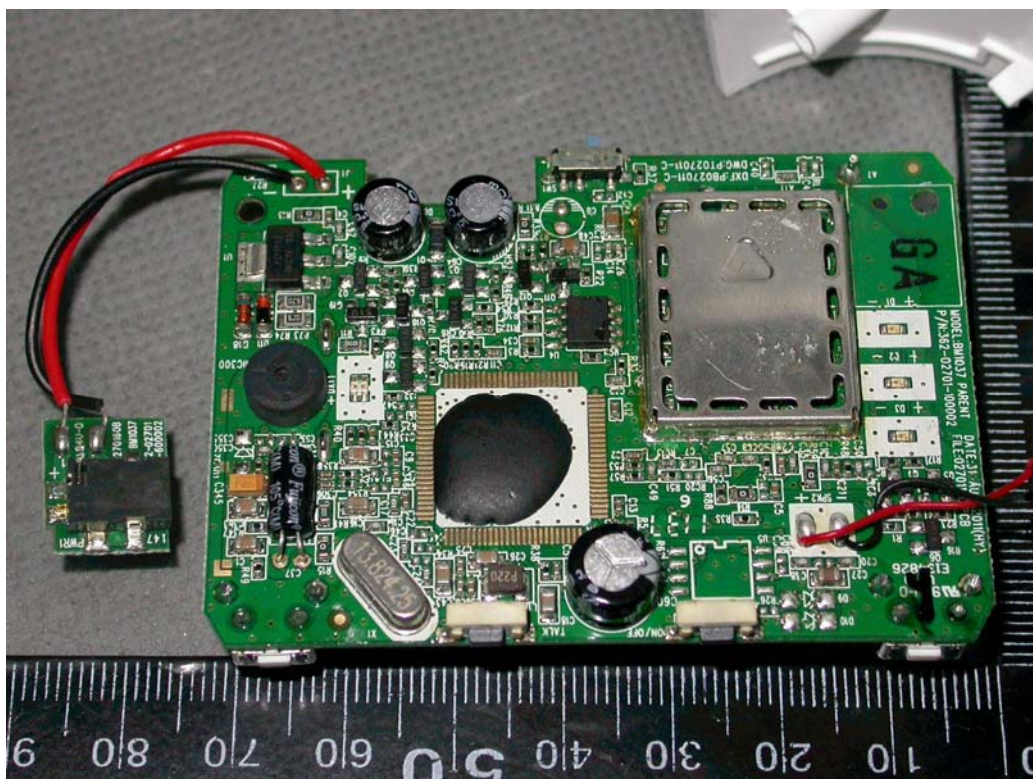
8. Inside View 3 of EUT



9. Inside View 4 of EUT



10. Front view of PCB





MODEL:BM1037 PARENT  
P/N:362-02701-100002

DATE:31-AUG  
FILE:02701101

AT

GA

DXF:PB027011-C  
DWG:PT027011-C

R57

30 20 10

## ANNEX B: SAR RESULTS

# System Performance Check

## Body



Date/Time: 2/21/2012 9:50:29 AM

Test Laboratory: Electronics Testing Center, Taiwan

**DUT: Dipole 1900 MHz; Type: D1900V2; Serial: D1900V2 - SN:xxx**

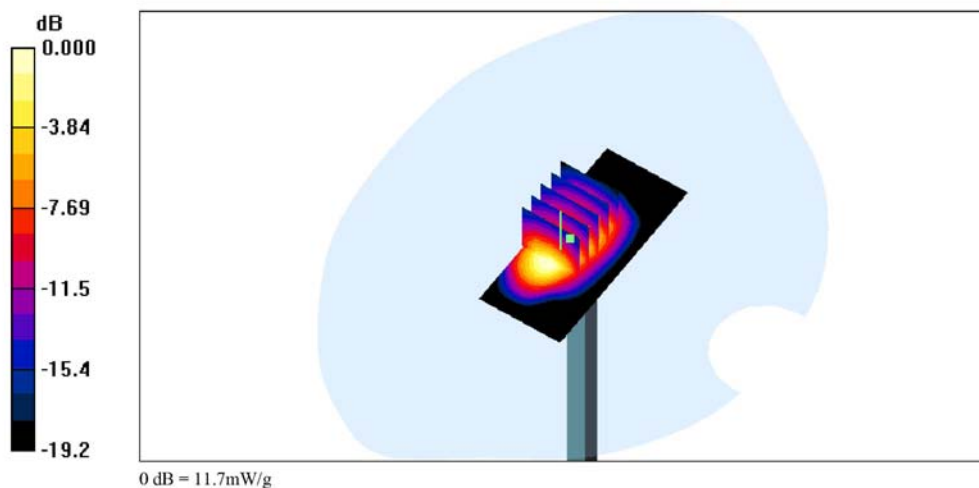
Communication System: CW; Frequency: 1900 MHz; Duty Cycle: 1:1  
Medium parameters used:  $f = 1900$  MHz;  $\sigma = 1.44$  mho/m;  $\epsilon_r = 55.5$ ;  $\rho = 1000$  kg/m<sup>3</sup>  
Air temperature: 22degC; Liquid temperature: 22.5degC;  
Phantom section: Flat Section

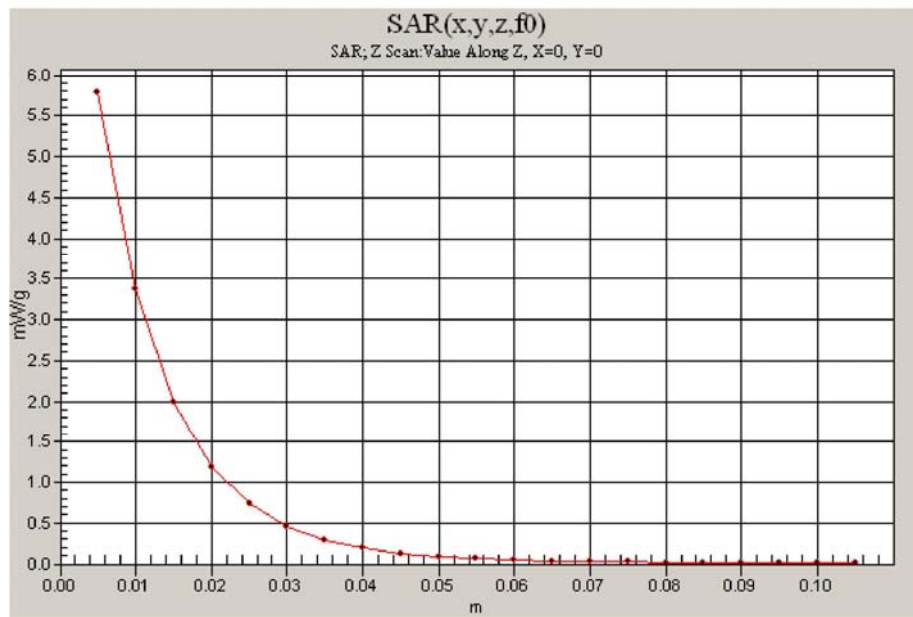
DASY4 Configuration:

- Probe: EX3DV4 - SN3555; ConvF(6.72, 6.72, 6.72); Calibrated: 9/29/2011
- Sensor-Surface: 4mm (Mechanical Surface Detection)
- Electronics: DAE4 Sn629; Calibrated: 9/22/2011
- Phantom: SAM 12-2; Type: SAM4.0; Serial: TP-1347
- Measurement SW: DASY4, V4.7 Build 80; Postprocessing SW: SEMCAD, V1.8 Build 186

**SPC/Area Scan (31x71x1):** Measurement grid: dx=15mm, dy=15mm  
Maximum value of SAR (interpolated) = 13.5 mW/g

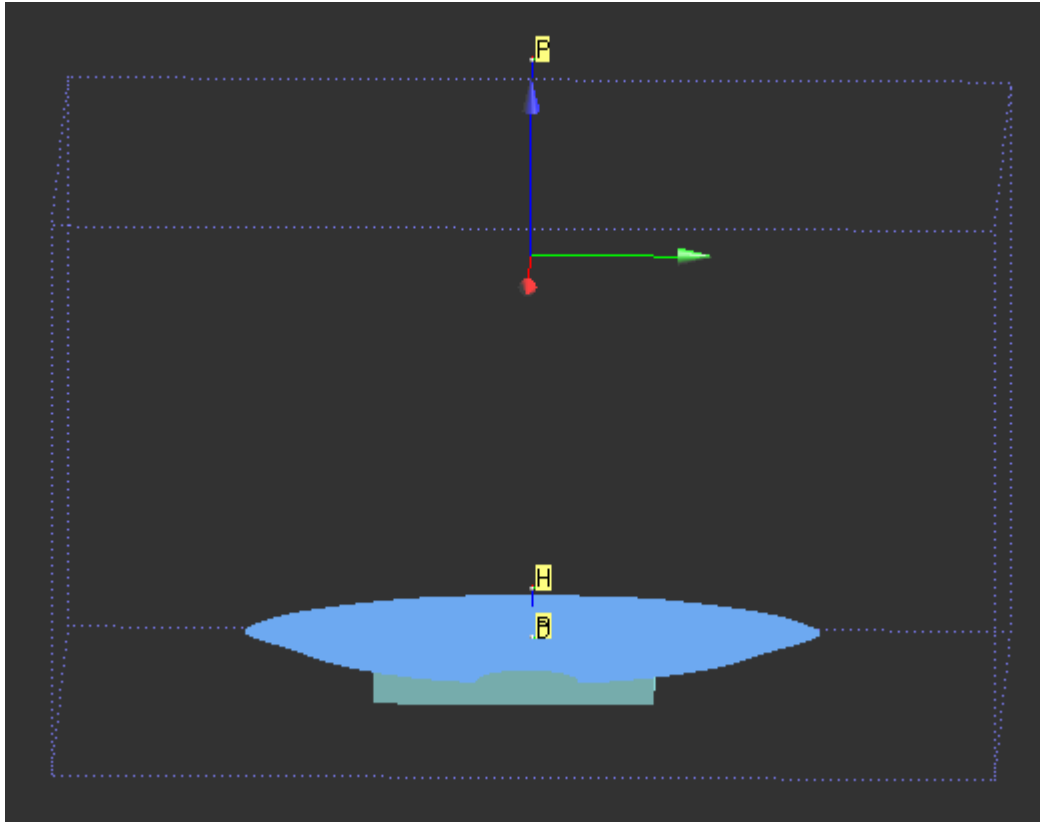
**SPC/Zoom Scan (5x5x7)/Cube 0:** Measurement grid: dx=8mm, dy=8mm, dz=5mm  
Reference Value = 71.7 V/m; Power Drift = 0.027 dB  
Peak SAR (extrapolated) = 22.0 W/kg  
**SAR(1 g) = 10.1 mW/g; SAR(10 g) = 4.77 mW/g**  
Maximum value of SAR (measured) = 11.7 mW/g







# Body



Date/Time: 2/21/2012 2:24:28 PM

Test Laboratory: Electronics Testing Center, Taiwan

**DUT: DECT Phone; Type: PP; Serial: MO104**

Communication System: US DECT-1900; Frequency: 1925 MHz; Duty Cycle: 1:24  
Medium parameters used:  $f = 1925$  MHz;  $\sigma = 1.47$  mho/m;  $\epsilon_r = 55.4$ ;  $\rho = 1000$  kg/m<sup>3</sup>  
Air temperature: 22degC; Liquid temperature: 22.5degC;  
Phantom section: Flat Section

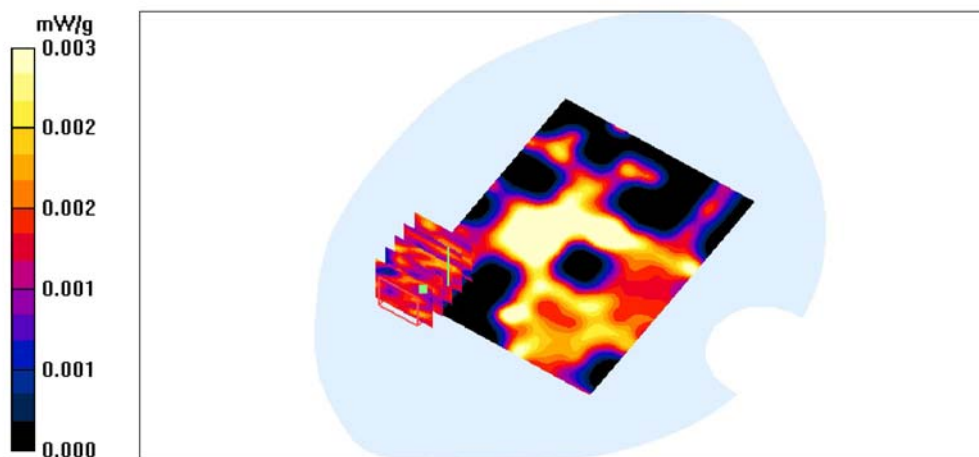
DASY4 Configuration:

- Probe: EX3DV4 - SN3555; ConvF(6.72, 6.72, 6.72); Calibrated: 9/29/2011
- Sensor-Surface: 4mm (Mechanical Surface Detection)
- Electronics: DAE4 Sn629; Calibrated: 9/22/2011
- Phantom: SAM 12-2; Type: SAM4.0; Serial: TP-1347
- Measurement SW: DASY4, V4.7 Build 80; Postprocessing SW: SEMCAD, V1.8 Build 186

**PP\_A-MID/Zoom Scan (5x5x7)/Cube 0:** Measurement grid: dx=8mm, dy=8mm, dz=5mm  
Reference Value = 1.41 V/m; Power Drift = 0.001 dB  
Peak SAR (extrapolated) = 0.007 W/kg  
**SAR(1 g) = 0.00176 mW/g; SAR(10 g) = 0.00109 mW/g**

Maximum value of SAR (measured) = 0.003 mW/g

**PP\_A-MID/Area Scan (71x91x1):** Measurement grid: dx=15mm, dy=15mm  
Maximum value of SAR (interpolated) = 0.005 mW/g





Date/Time: 2/21/2012 3:09:04 PM

Test Laboratory: Electronics Testing Center, Taiwan

DUT: DECT Phone; Type: PP; Serial: MO104

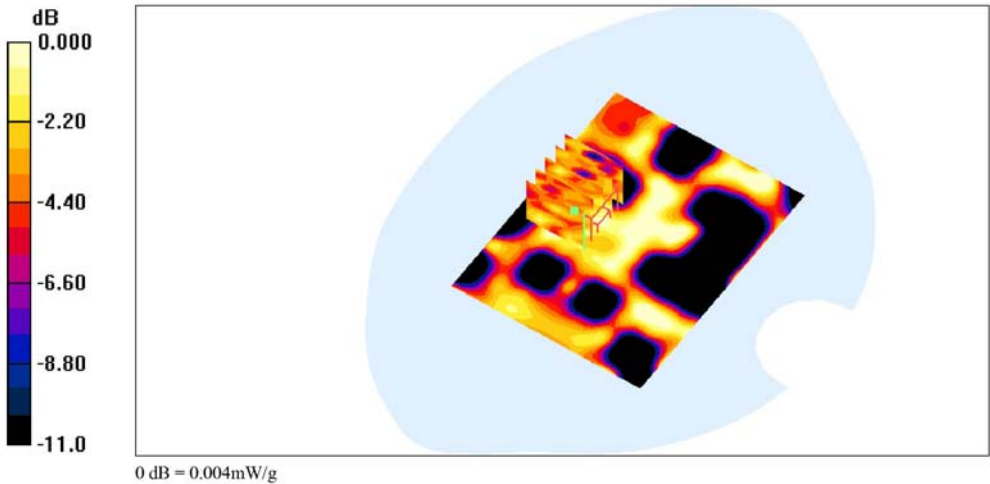
Communication System: US DECT-1900; Frequency: 1928.5 MHz;Duty Cycle: 1:24  
Medium parameters used:  $f = 1928.5\text{ MHz}$ ;  $\sigma = 1.48\text{ mho/m}$ ;  $\epsilon_r = 55.4$ ;  $\rho = 1000\text{ kg/m}^3$   
Air temperature: 22degC; Liquid temperature: 22.5degC;  
Phantom section: Flat Section

DASY4 Configuration:  
- Probe: EX3DV4 - SN3555; ConvF(6.72, 6.72, 6.72); Calibrated: 9/29/2011  
- Sensor-Surface: 4mm (Mechanical Surface Detection)  
- Electronics: DAE4 Sn629; Calibrated: 9/22/2011  
- Phantom: SAM 12-2; Type: SAM4.0; Serial: TP-1347  
- Measurement SW: DASY4, V4.7 Build 80; Postprocessing SW: SEMCAD, V1.8 Build 186

PP\_A-HIGH/Area Scan (71x91x1): Measurement grid: dx=15mm, dy=15mm  
Maximum value of SAR (interpolated) = 0.006 mW/g

PP\_A-HIGH/Zoom Scan (5x5x7)/Cube 0: Measurement grid: dx=8mm, dy=8mm, dz=5mm  
Reference Value = 1.50 V/m; Power Drift = -0.193 dB  
Peak SAR (extrapolated) = 0.011 W/kg  
SAR(1 g) = 0.00355 mW/g; SAR(10 g) = 0.00211 mW/g

Maximum value of SAR (measured) = 0.004 mW/g



Date/Time: 2/21/2012 2:48:08 PM

Test Laboratory: Electronics Testing Center, Taiwan

DUT: DECT Phone; Type: PP; Serial: MO104

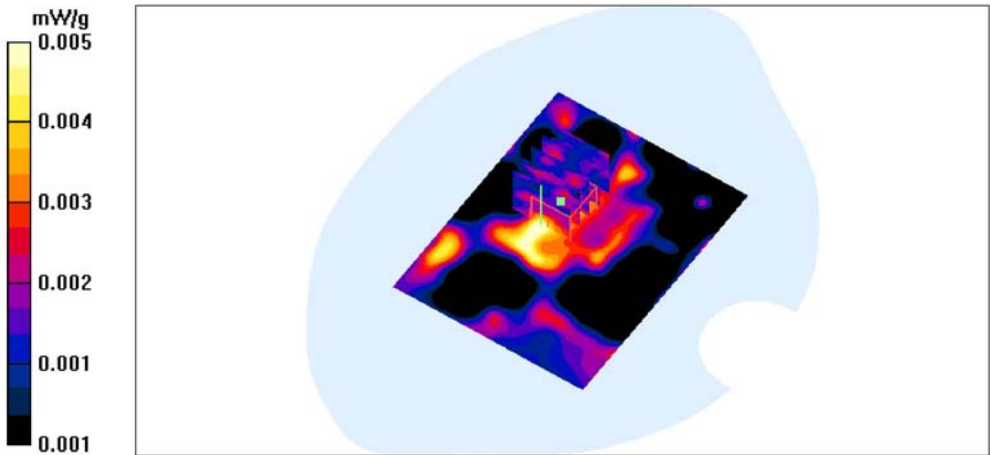
Communication System: US DECT-1900; Frequency: 1921.5 MHz; Duty Cycle: 1:24  
Medium parameters used:  $f = 1921.5 \text{ MHz}$ ;  $\sigma = 1.47 \text{ mho/m}$ ;  $\epsilon_r = 55.4$ ;  $\rho = 1000 \text{ kg/m}^3$   
Air temperature: 22degC; Liquid temperature: 22.5degC;  
Phantom section: Flat Section

DASY4 Configuration:  
- Probe: EX3DV4 - SN3555; ConvF(6.72, 6.72, 6.72); Calibrated: 9/29/2011  
- Sensor-Surface: 4mm (Mechanical Surface Detection)  
- Electronics: DAE4 Sn629; Calibrated: 9/22/2011  
- Phantom: SAM 12-2; Type: SAM4.0; Serial: TP-1347  
- Measurement SW: DASY4, V4.7 Build 80; Postprocessing SW: SEMCAD, V1.8 Build 186

PP\_A-LOW/Zoom Scan (5x5x7)/Cube 0: Measurement grid: dx=8mm, dy=8mm, dz=5mm  
Reference Value = 1.49 V/m; Power Drift = -0.129 dB  
Peak SAR (extrapolated) = 0.010 W/kg  
SAR(1 g) = 0.00349 mW/g; SAR(10 g) = 0.00212 mW/g

Maximum value of SAR (measured) = 0.005 mW/g

PP\_A-LOW/Area Scan (71x91x1): Measurement grid: dx=15mm, dy=15mm  
Maximum value of SAR (interpolated) = 0.006 mW/g



Date/Time: 2/21/2012 4:34:16 PM

Test Laboratory: Electronics Testing Center, Taiwan

**DUT: DECT Phone; Type: PP; Serial: MO104**

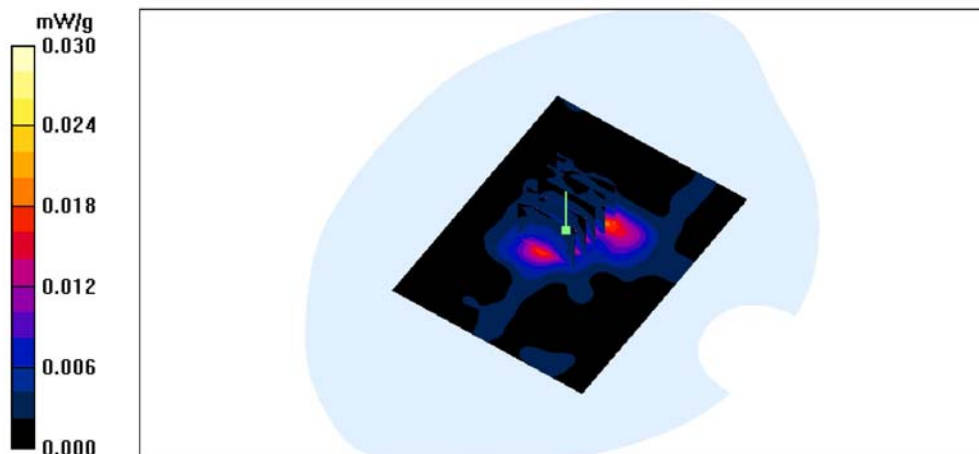
Communication System: US DECT-1900; Frequency: 1925 MHz; Duty Cycle: 1:24  
Medium parameters used:  $f = 1925$  MHz;  $\sigma = 1.47$  mho/m;  $\epsilon_r = 55.4$ ;  $\rho = 1000$  kg/m<sup>3</sup>  
Air temperature: 22degC; Liquid temperature: 22.5degC;  
Phantom section: Flat Section

DASY4 Configuration:

- Probe: EX3DV4 - SN3555; ConvF(6.72, 6.72, 6.72); Calibrated: 9/29/2011
- Sensor-Surface: 4mm (Mechanical Surface Detection)
- Electronics: DAE4 Sn629; Calibrated: 9/22/2011
- Phantom: SAM 12-2; Type: SAM4.0; Serial: TP-1347
- Measurement SW: DASY4, V4.7 Build 80; Postprocessing SW: SEMCAD, V1.8 Build 186

**PP\_B-MID/Zoom Scan (5x5x7)/Cube 0:** Measurement grid: dx=8mm, dy=8mm, dz=5mm  
Reference Value = 3.99 V/m; Power Drift = 0.186 dB  
Peak SAR (extrapolated) = 0.049 W/kg  
**SAR(1 g) = 0.0275 mW/g; SAR(10 g) = 0.013 mW/g**  
Maximum value of SAR (measured) = 0.030 mW/g

**PP\_B-MID/Area Scan (71x91x1):** Measurement grid: dx=15mm, dy=15mm  
Maximum value of SAR (interpolated) = 0.030 mW/g



Date/Time: 2/21/2012 3:29:59 PM

Test Laboratory: Electronics Testing Center, Taiwan

**DUT: DECT Phone; Type: PP; Serial: MO104**

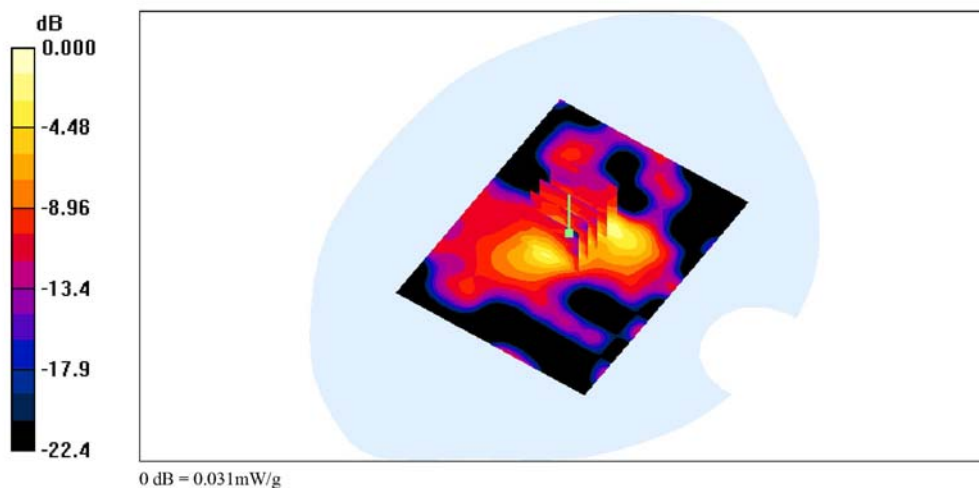
Communication System: US DECT-1900; Frequency: 1928.5 MHz; Duty Cycle: 1:24  
Medium parameters used:  $f = 1928.5$  MHz;  $\sigma = 1.48$  mho/m;  $\epsilon_r = 55.4$ ;  $\rho = 1000$  kg/m<sup>3</sup>  
Air temperature: 22degC; Liquid temperature: 22.5degC;  
Phantom section: Flat Section

DASY4 Configuration:

- Probe: EX3DV4 - SN3555; ConvF(6.72, 6.72, 6.72); Calibrated: 9/29/2011
- Sensor-Surface: 4mm (Mechanical Surface Detection)
- Electronics: DAE4 Sn629; Calibrated: 9/22/2011
- Phantom: SAM 12-2; Type: SAM4.0; Serial: TP-1347
- Measurement SW: DASY4, V4.7 Build 80; Postprocessing SW: SEMCAD, V1.8 Build 186

**PP\_B-HIGH/Zoom Scan (5x5x7)/Cube 0:** Measurement grid: dx=8mm, dy=8mm, dz=5mm  
Reference Value = 4.09 V/m; Power Drift = 0.170 dB  
Peak SAR (extrapolated) = 0.056 W/kg  
**SAR(1 g) = 0.028 mW/g; SAR(10 g) = 0.013 mW/g**  
Maximum value of SAR (measured) = 0.031 mW/g

**PP\_B-HIGH/Area Scan (71x91x1):** Measurement grid: dx=15mm, dy=15mm  
Maximum value of SAR (interpolated) = 0.030 mW/g



Date/Time: 2/21/2012 4:05:36 PM

Test Laboratory: Electronics Testing Center, Taiwan

**DUT: DECT Phone; Type: PP; Serial: MO104**

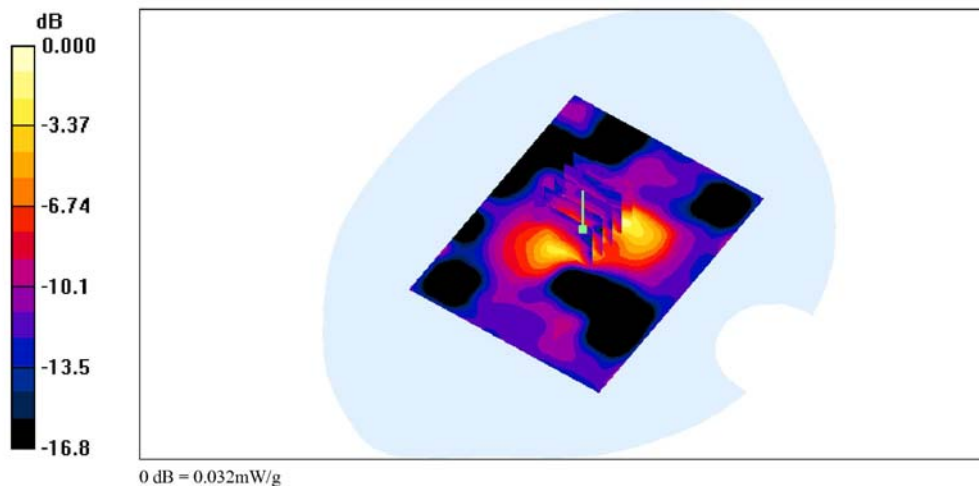
Communication System: US DECT-1900; Frequency: 1921.5 MHz; Duty Cycle: 1:24  
Medium parameters used:  $f = 1921.5$  MHz;  $\sigma = 1.47$  mho/m;  $\epsilon_r = 55.4$ ;  $\rho = 1000$  kg/m<sup>3</sup>  
Air temperature: 22degC; Liquid temperature: 22.5degC;  
Phantom section: Flat Section

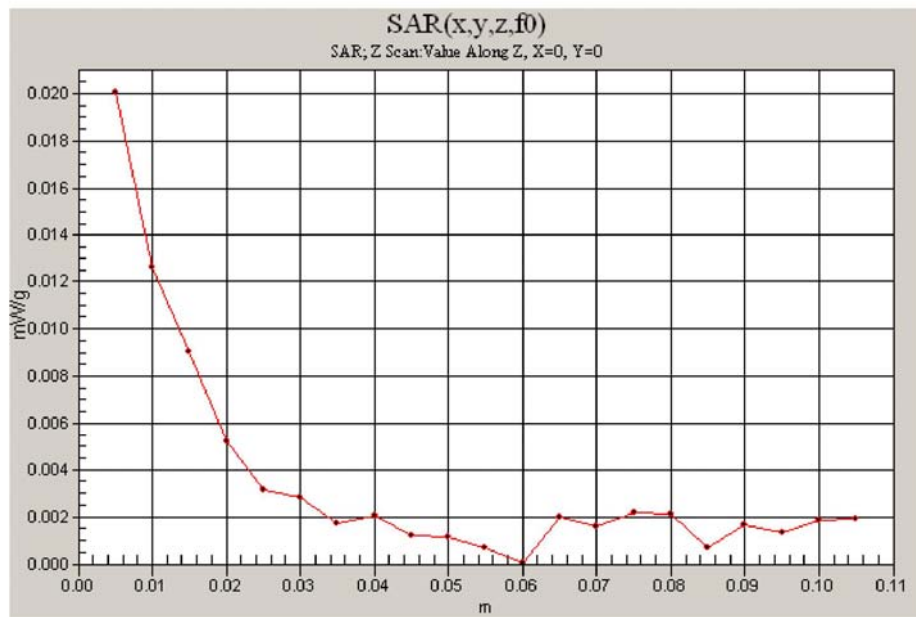
DASY4 Configuration:

- Probe: EX3DV4 - SN3555; ConvF(6.72, 6.72, 6.72); Calibrated: 9/29/2011
- Sensor-Surface: 4mm (Mechanical Surface Detection)
- Electronics: DAE4 Sn629; Calibrated: 9/22/2011
- Phantom: SAM 12-2; Type: SAM4.0; Serial: TP-1347
- Measurement SW: DASY4, V4.7 Build 80; Postprocessing SW: SEMCAD, V1.8 Build 186

**PP\_B-LOW/Zoom Scan (5x5x7)/Cube 0:** Measurement grid: dx=8mm, dy=8mm, dz=5mm  
Reference Value = 4.04 V/m; Power Drift = 0.119 dB  
Peak SAR (extrapolated) = 0.055 W/kg  
**SAR(1 g) = 0.0284 mW/g; SAR(10 g) = 0.013 mW/g**  
Maximum value of SAR (measured) = 0.032 mW/g

**PP\_B-LOW/Area Scan (71x91x1):** Measurement grid: dx=15mm, dy=15mm  
Maximum value of SAR (interpolated) = 0.031 mW/g





Date/Time: 2/21/2012 4:51:57 PM

Test Laboratory: Electronics Testing Center, Taiwan

**DUT: DECT Phone; Type: PP; Serial: MO104**

Communication System: US DECT-1900; Frequency: 1925 MHz; Duty Cycle: 1:24  
Medium parameters used:  $f = 1925$  MHz;  $\sigma = 1.47$  mho/m;  $\epsilon_r = 55.4$ ;  $\rho = 1000$  kg/m<sup>3</sup>  
Air temperature: 22degC; Liquid temperature: 22.5degC;  
Phantom section: Flat Section

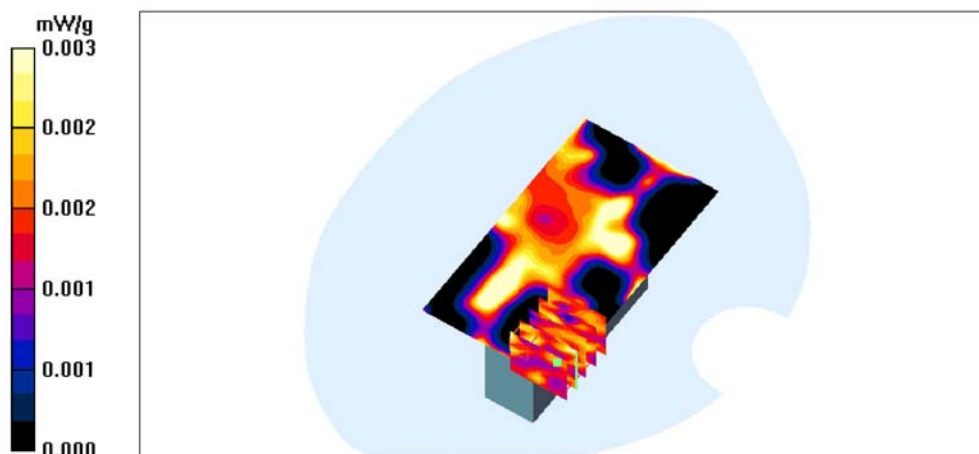
DASY4 Configuration:

- Probe: EX3DV4 - SN3555; ConvF(6.72, 6.72, 6.72); Calibrated: 9/29/2011
- Sensor-Surface: 4mm (Mechanical Surface Detection)
- Electronics: DAE4 Sn629; Calibrated: 9/22/2011
- Phantom: SAM 12-2; Type: SAM4.0; Serial: TP-1347
- Measurement SW: DASY4, V4.7 Build 80; Postprocessing SW: SEMCAD, V1.8 Build 186

**PP\_C-MID/Zoom Scan (5x5x7)/Cube 0:** Measurement grid: dx=8mm, dy=8mm, dz=5mm  
Reference Value = 1.28 V/m; Power Drift = -0.112 dB  
Peak SAR (extrapolated) = 0.006 W/kg  
**SAR(1 g) = 0.00185 mW/g; SAR(10 g) = 0.000878 mW/g**

Maximum value of SAR (measured) = 0.003 mW/g

**PP\_C-MID/Area Scan (51x91x1):** Measurement grid: dx=15mm, dy=15mm  
Maximum value of SAR (interpolated) = 0.005 mW/g



Date/Time: 2/21/2012 5:47:40 PM

Test Laboratory: Electronics Testing Center, Taiwan

**DUT: DECT Phone; Type: PP; Serial: MO104**

Communication System: US DECT-1900; Frequency: 1928.5 MHz; Duty Cycle: 1:24  
Medium parameters used:  $f = 1928.5$  MHz;  $\sigma = 1.48$  mho/m;  $\epsilon_r = 55.4$ ;  $\rho = 1000$  kg/m<sup>3</sup>  
Air temperature: 22degC; Liquid temperature: 22.5degC;  
Phantom section: Flat Section

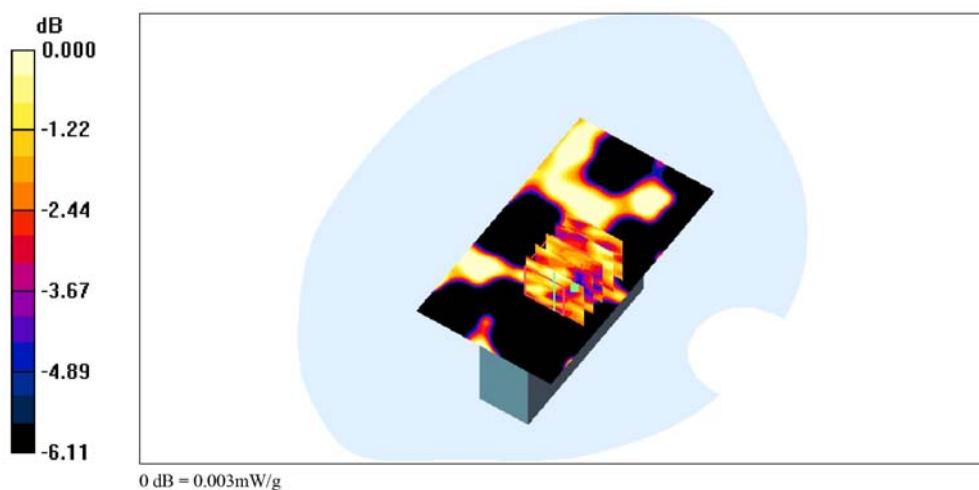
DASY4 Configuration:

- Probe: EX3DV4 - SN3555; ConvF(6.72, 6.72, 6.72); Calibrated: 9/29/2011
- Sensor-Surface: 4mm (Mechanical Surface Detection)
- Electronics: DAE4 Sn629; Calibrated: 9/22/2011
- Phantom: SAM 12-2; Type: SAM4.0; Serial: TP-1347
- Measurement SW: DASY4, V4.7 Build 80; Postprocessing SW: SEMCAD, V1.8 Build 186

**PP\_C-HIGH/Area Scan (51x91x1):** Measurement grid: dx=15mm, dy=15mm  
Maximum value of SAR (interpolated) = 0.007 mW/g

**PP\_C-HIGH/Zoom Scan (5x5x7)/Cube 0:** Measurement grid: dx=8mm, dy=8mm, dz=5mm  
Reference Value = 1.15 V/m; Power Drift = 0.152 dB  
Peak SAR (extrapolated) = 0.004 W/kg  
**SAR(1 g) = 0.00231 mW/g; SAR(10 g) = 0.00171 mW/g**

Maximum value of SAR (measured) = 0.003 mW/g





Date/Time: 2/21/2012 5:16:07 PM

Test Laboratory: Electronics Testing Center, Taiwan

**DUT: DECT Phone; Type: PP; Serial: MO104**

Communication System: US DECT-1900; Frequency: 1921.5 MHz; Duty Cycle: 1:24  
Medium parameters used:  $f = 1921.5$  MHz;  $\sigma = 1.47$  mho/m;  $\epsilon_r = 55.4$ ;  $\rho = 1000$  kg/m<sup>3</sup>  
Air temperature: 22degC; Liquid temperature: 22.5degC;  
Phantom section: Flat Section

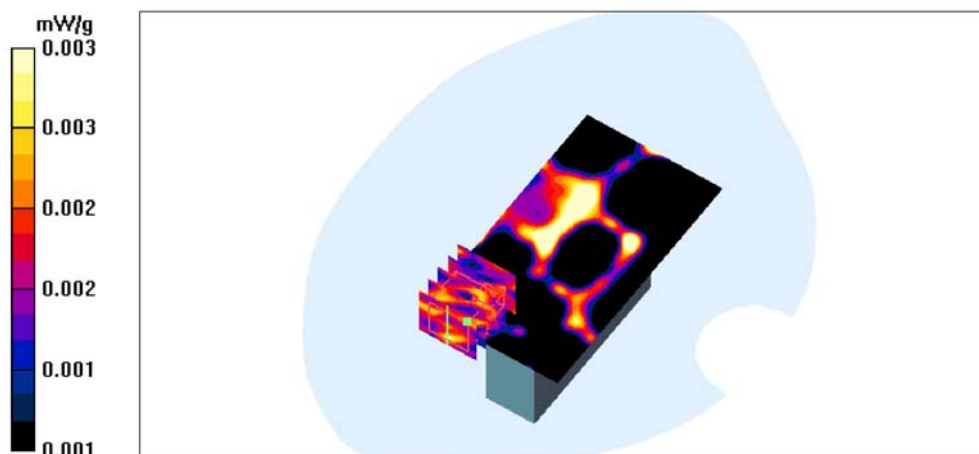
DASY4 Configuration:

- Probe: EX3DV4 - SN3555; ConvF(6.72, 6.72, 6.72); Calibrated: 9/29/2011
- Sensor-Surface: 4mm (Mechanical Surface Detection)
- Electronics: DAE4 Sn629; Calibrated: 9/22/2011
- Phantom: SAM 12-2; Type: SAM4.0; Serial: TP-1347
- Measurement SW: DASY4, V4.7 Build 80; Postprocessing SW: SEMCAD, V1.8 Build 186

**PP\_C-LOW/Zoom Scan (5x5x7)/Cube 0:** Measurement grid: dx=8mm, dy=8mm, dz=5mm  
Reference Value = 1.09 V/m; Power Drift = 0.141 dB  
Peak SAR (extrapolated) = 0.007 W/kg  
**SAR(1 g) = 0.0023 mW/g; SAR(10 g) = 0.0013 mW/g**

Maximum value of SAR (measured) = 0.003 mW/g

**PP\_C-LOW/Area Scan (51x91x1):** Measurement grid: dx=15mm, dy=15mm  
Maximum value of SAR (interpolated) = 0.007 mW/g



Date/Time: 2/21/2012 6:38:28 PM

Test Laboratory: Electronics Testing Center, Taiwan

**DUT: DECT Phone; Type: PP; Serial: MO104**

Communication System: US DECT-1900; Frequency: 1925 MHz; Duty Cycle: 1:24  
Medium parameters used:  $f = 1925$  MHz;  $\sigma = 1.47$  mho/m;  $\epsilon_r = 55.4$ ;  $\rho = 1000$  kg/m<sup>3</sup>  
Air temperature: 22degC; Liquid temperature: 22.5degC;  
Phantom section: Flat Section

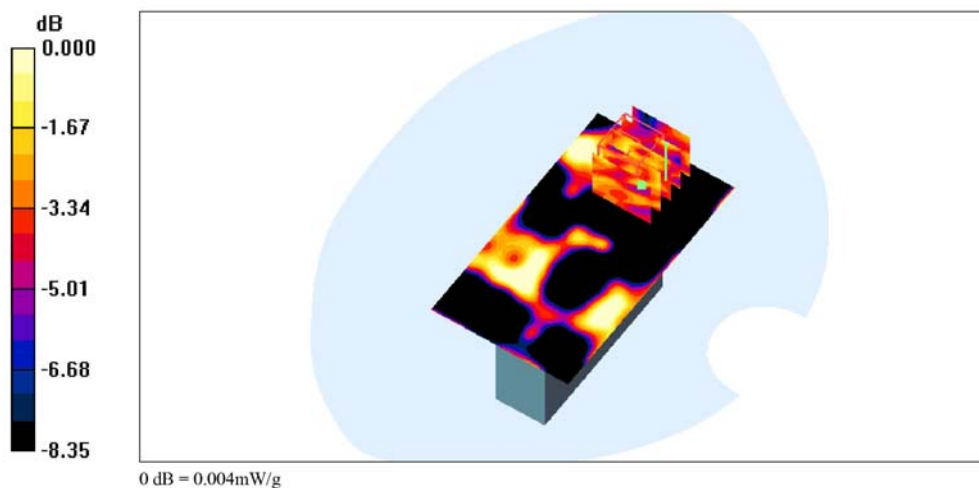
DASY4 Configuration:

- Probe: EX3DV4 - SN3555; ConvF(6.72, 6.72, 6.72); Calibrated: 9/29/2011
- Sensor-Surface: 4mm (Mechanical Surface Detection)
- Electronics: DAE4 Sn629; Calibrated: 9/22/2011
- Phantom: SAM 12-2; Type: SAM4.0; Serial: TP-1347
- Measurement SW: DASY4, V4.7 Build 80; Postprocessing SW: SEMCAD, V1.8 Build 186

**PP\_D-MID/Zoom Scan (5x5x7)/Cube 0:** Measurement grid: dx=8mm, dy=8mm, dz=5mm  
Reference Value = 1.12 V/m; Power Drift = -0.128 dB  
Peak SAR (extrapolated) = 0.006 W/kg  
**SAR(1 g) = 0.00226 mW/g; SAR(10 g) = 0.00151 mW/g**

Maximum value of SAR (measured) = 0.004 mW/g

**PP\_D-MID/Area Scan (51x91x1):** Measurement grid: dx=15mm, dy=15mm  
Maximum value of SAR (interpolated) = 0.007 mW/g



Date/Time: 2/21/2012 6:08:27 PM

Test Laboratory: Electronics Testing Center, Taiwan

**DUT: DECT Phone; Type: PP; Serial: MO104**

Communication System: US DECT-1900; Frequency: 1928.5 MHz; Duty Cycle: 1:24  
Medium parameters used:  $f = 1928.5$  MHz;  $\sigma = 1.48$  mho/m;  $\epsilon_r = 55.4$ ;  $\rho = 1000$  kg/m<sup>3</sup>  
Air temperature: 22degC; Liquid temperature: 22.5degC;  
Phantom section: Flat Section

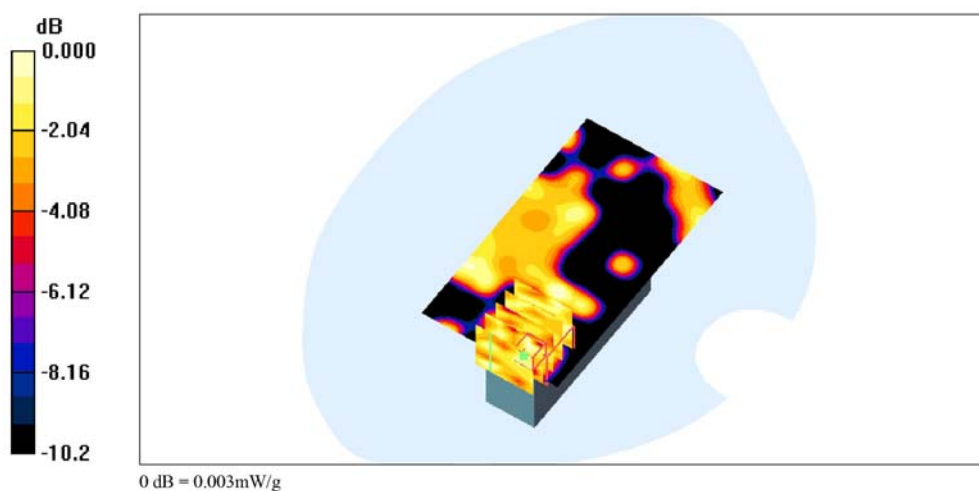
DASY4 Configuration:

- Probe: EX3DV4 - SN3555; ConvF(6.72, 6.72, 6.72); Calibrated: 9/29/2011
- Sensor-Surface: 4mm (Mechanical Surface Detection)
- Electronics: DAE4 Sn629; Calibrated: 9/22/2011
- Phantom: SAM 12-2; Type: SAM4.0; Serial: TP-1347
- Measurement SW: DASY4, V4.7 Build 80; Postprocessing SW: SEMCAD, V1.8 Build 186

**PP\_D-HIGH/Zoom Scan (5x5x7)/Cube 0:** Measurement grid: dx=8mm, dy=8mm, dz=5mm  
Reference Value = 1.32 V/m; Power Drift = -0.189 dB  
Peak SAR (extrapolated) = 0.007 W/kg  
**SAR(1 g) = 0.00237 mW/g; SAR(10 g) = 0.00124 mW/g**

Maximum value of SAR (measured) = 0.003 mW/g

**PP\_D-HIGH/Area Scan (51x91x1):** Measurement grid: dx=15mm, dy=15mm  
Maximum value of SAR (interpolated) = 0.003 mW/g



Date/Time: 2/21/2012 6:20:10 PM

Test Laboratory: Electronics Testing Center, Taiwan

**DUT: DECT Phone; Type: PP; Serial: MO104**

Communication System: US DECT-1900; Frequency: 1921.5 MHz; Duty Cycle: 1:24  
Medium parameters used:  $f = 1921.5$  MHz;  $\sigma = 1.47$  mho/m;  $\epsilon_r = 55.4$ ;  $\rho = 1000$  kg/m<sup>3</sup>  
Air temperature: 22degC; Liquid temperature: 22.5degC;  
Phantom section: Flat Section

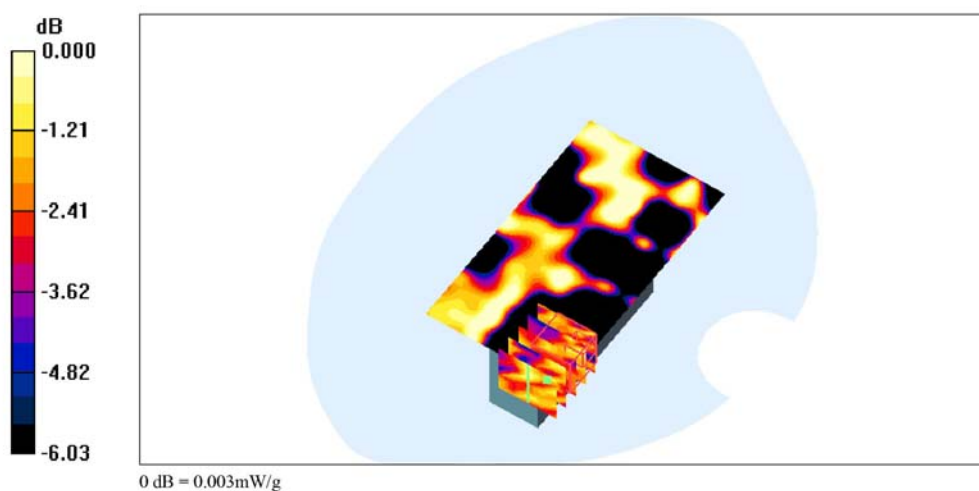
DASY4 Configuration:

- Probe: EX3DV4 - SN3555; ConvF(6.72, 6.72, 6.72); Calibrated: 9/29/2011
- Sensor-Surface: 4mm (Mechanical Surface Detection)
- Electronics: DAE4 Sn629; Calibrated: 9/22/2011
- Phantom: SAM 12-2; Type: SAM4.0; Serial: TP-1347
- Measurement SW: DASY4, V4.7 Build 80; Postprocessing SW: SEMCAD, V1.8 Build 186

**PP\_D-LOW/Zoom Scan (5x5x7)/Cube 0:** Measurement grid: dx=8mm, dy=8mm, dz=5mm  
Reference Value = 1.01 V/m; Power Drift = 0.166 dB  
Peak SAR (extrapolated) = 0.007 W/kg  
**SAR(1 g) = 0.00227 mW/g; SAR(10 g) = 0.00115 mW/g**

Maximum value of SAR (measured) = 0.003 mW/g

**PP\_D-LOW/Area Scan (51x91x1):** Measurement grid: dx=15mm, dy=15mm  
Maximum value of SAR (interpolated) = 0.004 mW/g



Date/Time: 2/22/2012 2:10:27 PM

Test Laboratory: Electronics Testing Center, Taiwan

**DUT: DECT Phone; Type: PP; Serial: MO104**

Communication System: US DECT-1900; Frequency: 1925 MHz; Duty Cycle: 1:24  
Medium parameters used:  $f = 1925$  MHz;  $\sigma = 1.47$  mho/m;  $\epsilon_r = 55.4$ ;  $\rho = 1000$  kg/m<sup>3</sup>  
Air temperature: 22degC; Liquid temperature: 22.5degC;  
Phantom section: Flat Section

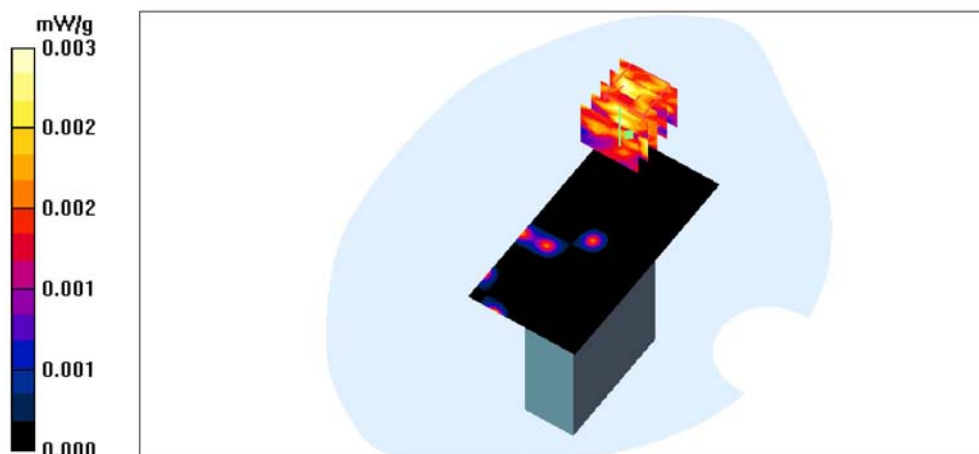
DASY4 Configuration:

- Probe: EX3DV4 - SN3555; ConvF(6.72, 6.72, 6.72); Calibrated: 9/29/2011
- Sensor-Surface: 4mm (Mechanical Surface Detection)
- Electronics: DAE4 Sn629; Calibrated: 9/22/2011
- Phantom: SAM 12-2; Type: SAM4.0; Serial: TP-1347
- Measurement SW: DASY4, V4.7 Build 80; Postprocessing SW: SEMCAD, V1.8 Build 186

**PP\_E-MID/Zoom Scan (5x5x7)/Cube 0:** Measurement grid: dx=8mm, dy=8mm, dz=5mm  
Reference Value = 0.000 V/m; Power Drift = 0.159 dB  
Peak SAR (extrapolated) = 0.006 W/kg  
**SAR(1 g) = 0.00252 mW/g; SAR(10 g) = 0.00176 mW/g**

Maximum value of SAR (measured) = 0.003 mW/g

**PP\_E-MID/Area Scan (41x81x1):** Measurement grid: dx=15mm, dy=15mm  
Maximum value of SAR (interpolated) = 0.003 mW/g



Date/Time: 2/22/2012 2:51:01 PM

Test Laboratory: Electronics Testing Center, Taiwan

**DUT: DECT Phone; Type: PP; Serial: MO104**

Communication System: US DECT-1900; Frequency: 1928.5 MHz; Duty Cycle: 1:24  
Medium parameters used:  $f = 1928.5$  MHz;  $\sigma = 1.48$  mho/m;  $\epsilon_r = 55.4$ ;  $\rho = 1000$  kg/m<sup>3</sup>  
Air temperature: 22degC; Liquid temperature: 22.5degC;  
Phantom section: Flat Section

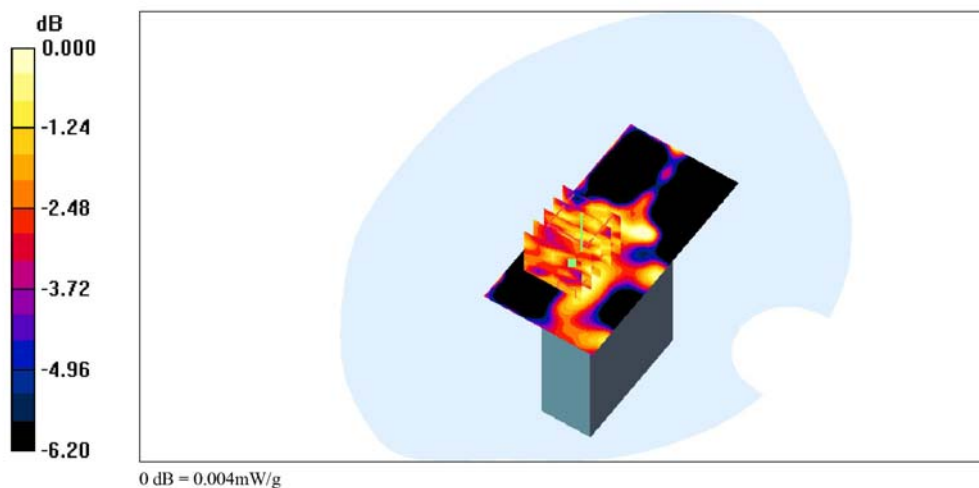
DASY4 Configuration:

- Probe: EX3DV4 - SN3555; ConvF(6.72, 6.72, 6.72); Calibrated: 9/29/2011
- Sensor-Surface: 4mm (Mechanical Surface Detection)
- Electronics: DAE4 Sn629; Calibrated: 9/22/2011
- Phantom: SAM 12-2; Type: SAM4.0; Serial: TP-1347
- Measurement SW: DASY4, V4.7 Build 80; Postprocessing SW: SEMCAD, V1.8 Build 186

**PP\_E-HIGH/Area Scan (41x81x1):** Measurement grid: dx=15mm, dy=15mm  
Maximum value of SAR (interpolated) = 0.004 mW/g

**PP\_E-HIGH/Zoom Scan (5x5x7)/Cube 0:** Measurement grid: dx=8mm, dy=8mm, dz=5mm  
Reference Value = 1.17 V/m; Power Drift = 0.138 dB  
Peak SAR (extrapolated) = 0.009 W/kg  
**SAR(1 g) = 0.00273 mW/g; SAR(10 g) = 0.00202 mW/g**

Maximum value of SAR (measured) = 0.004 mW/g



Date/Time: 2/22/2012 2:32:45 PM

Test Laboratory: Electronics Testing Center, Taiwan

**DUT: DECT Phone; Type: PP; Serial: MO104**

Communication System: US DECT-1900; Frequency: 1921.5 MHz; Duty Cycle: 1:24  
Medium parameters used:  $f = 1921.5$  MHz;  $\sigma = 1.47$  mho/m;  $\epsilon_r = 55.4$ ;  $\rho = 1000$  kg/m<sup>3</sup>  
Air temperature: 22degC; Liquid temperature: 22.5degC;  
Phantom section: Flat Section

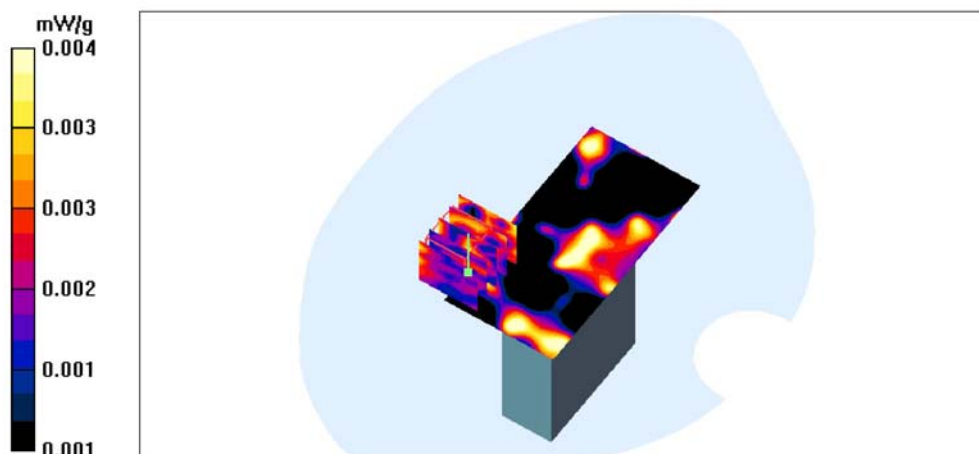
DASY4 Configuration:

- Probe: EX3DV4 - SN3555; ConvF(6.72, 6.72, 6.72); Calibrated: 9/29/2011
- Sensor-Surface: 4mm (Mechanical Surface Detection)
- Electronics: DAE4 Sn629; Calibrated: 9/22/2011
- Phantom: SAM 12-2; Type: SAM4.0; Serial: TP-1347
- Measurement SW: DASY4, V4.7 Build 80; Postprocessing SW: SEMCAD, V1.8 Build 186

**PP\_E-LOW/Zoom Scan (5x5x7)/Cube 0:** Measurement grid: dx=8mm, dy=8mm, dz=5mm  
Reference Value = 1.19 V/m; Power Drift = 0.185 dB  
Peak SAR (extrapolated) = 0.004 W/kg  
**SAR(1 g) = 0.00311 mW/g; SAR(10 g) = 0.00191 mW/g**

Maximum value of SAR (measured) = 0.004 mW/g

**PP\_E-LOW/Area Scan (41x81x1):** Measurement grid: dx=15mm, dy=15mm  
Maximum value of SAR (interpolated) = 0.005 mW/g



Date/Time: 2/21/2012 7:04:33 PM

Test Laboratory: Electronics Testing Center, Taiwan

**DUT: DECT Phone; Type: PP; Serial: MO104**

Communication System: US DECT-1900; Frequency: 1925 MHz; Duty Cycle: 1:24  
Medium parameters used:  $f = 1925$  MHz;  $\sigma = 1.47$  mho/m;  $\epsilon_r = 55.4$ ;  $\rho = 1000$  kg/m<sup>3</sup>  
Air temperature: 22degC; Liquid temperature: 22.5degC;  
Phantom section: Flat Section

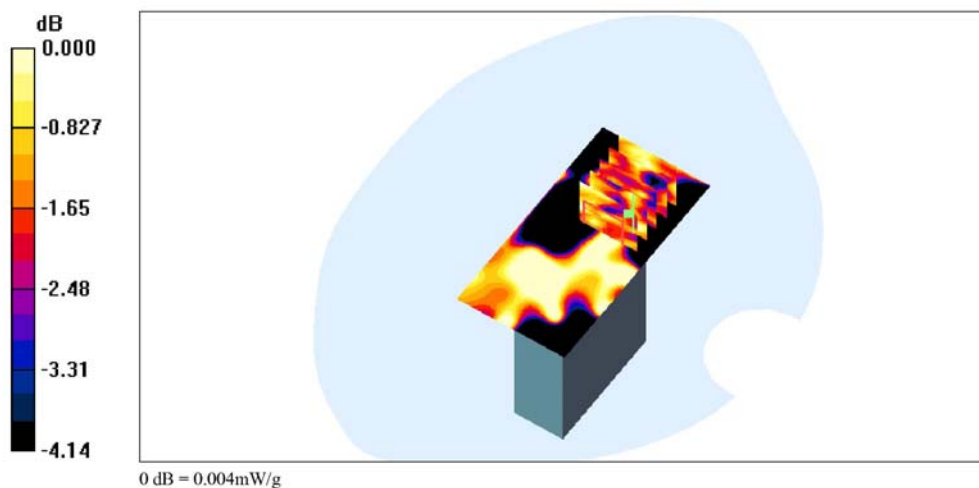
DASY4 Configuration:

- Probe: EX3DV4 - SN3555; ConvF(6.72, 6.72, 6.72); Calibrated: 9/29/2011
- Sensor-Surface: 4mm (Mechanical Surface Detection)
- Electronics: DAE4 Sn629; Calibrated: 9/22/2011
- Phantom: SAM 12-2; Type: SAM4.0; Serial: TP-1347
- Measurement SW: DASY4, V4.7 Build 80; Postprocessing SW: SEMCAD, V1.8 Build 186

**PP\_F-MID/Zoom Scan (5x5x7)/Cube 0:** Measurement grid: dx=8mm, dy=8mm, dz=5mm  
Reference Value = 1.45 V/m; Power Drift = -0.136 dB  
Peak SAR (extrapolated) = 0.008 W/kg  
**SAR(1 g) = 0.00349 mW/g; SAR(10 g) = 0.00251 mW/g**

Maximum value of SAR (measured) = 0.004 mW/g

**PP\_F-MID/Area Scan (41x81x1):** Measurement grid: dx=15mm, dy=15mm  
Maximum value of SAR (interpolated) = 0.006 mW/g





Date/Time: 2/21/2012 8:05:50 PM

Test Laboratory: Electronics Testing Center, Taiwan

**DUT: DECT Phone; Type: PP; Serial: MO104**

Communication System: US DECT-1900; Frequency: 1928.5 MHz; Duty Cycle: 1:24  
Medium parameters used:  $f = 1928.5$  MHz;  $\sigma = 1.48$  mho/m;  $\epsilon_r = 55.4$ ;  $\rho = 1000$  kg/m<sup>3</sup>  
Air temperature: 22degC; Liquid temperature: 22.5degC;  
Phantom section: Flat Section

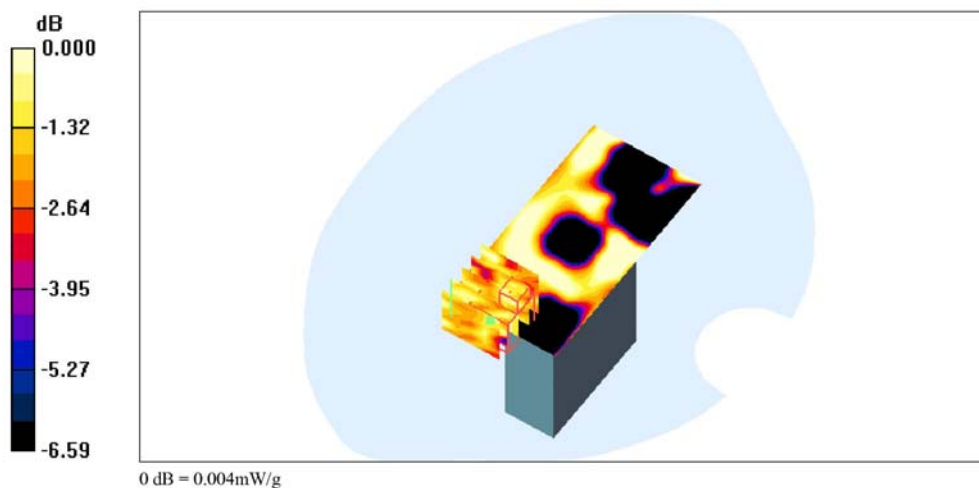
DASY4 Configuration:

- Probe: EX3DV4 - SN3555; ConvF(6.72, 6.72, 6.72); Calibrated: 9/29/2011
- Sensor-Surface: 4mm (Mechanical Surface Detection)
- Electronics: DAE4 Sn629; Calibrated: 9/22/2011
- Phantom: SAM 12-2; Type: SAM4.0; Serial: TP-1347
- Measurement SW: DASY4, V4.7 Build 80; Postprocessing SW: SEMCAD, V1.8 Build 186

**PP\_F-HIGH/Zoom Scan (5x5x7)/Cube 0:** Measurement grid: dx=8mm, dy=8mm, dz=5mm  
Reference Value = 1.27 V/m; Power Drift = 0.131 dB  
Peak SAR (extrapolated) = 0.006 W/kg  
**SAR(1 g) = 0.00337 mW/g; SAR(10 g) = 0.00211 mW/g**

Maximum value of SAR (measured) = 0.004 mW/g

**PP\_F-HIGH/Area Scan (41x81x1):** Measurement grid: dx=15mm, dy=15mm  
Maximum value of SAR (interpolated) = 0.007 mW/g



Date/Time: 2/21/2012 7:31:39 PM

Test Laboratory: Electronics Testing Center, Taiwan

**DUT: DECT Phone; Type: PP; Serial: MO104**

Communication System: US DECT-1900; Frequency: 1921.5 MHz; Duty Cycle: 1:24  
Medium parameters used:  $f = 1921.5$  MHz;  $\sigma = 1.47$  mho/m;  $\epsilon_r = 55.4$ ;  $\rho = 1000$  kg/m<sup>3</sup>  
Air temperature: 22degC; Liquid temperature: 22.5degC;  
Phantom section: Flat Section

DASY4 Configuration:

- Probe: EX3DV4 - SN3555; ConvF(6.72, 6.72, 6.72); Calibrated: 9/29/2011
- Sensor-Surface: 4mm (Mechanical Surface Detection)
- Electronics: DAE4 Sn629; Calibrated: 9/22/2011
- Phantom: SAM 12-2; Type: SAM4.0; Serial: TP-1347
- Measurement SW: DASY4, V4.7 Build 80; Postprocessing SW: SEMCAD, V1.8 Build 186

**PP\_F-LOW/Zoom Scan (5x5x7)/Cube 0:** Measurement grid: dx=8mm, dy=8mm, dz=5mm  
Reference Value = 1.23 V/m; Power Drift = 0.094 dB  
Peak SAR (extrapolated) = 0.010 W/kg  
**SAR(1 g) = 0.00409 mW/g; SAR(10 g) = 0.00328 mW/g**

Maximum value of SAR (measured) = 0.005 mW/g

**PP\_F-LOW/Area Scan (41x81x1):** Measurement grid: dx=15mm, dy=15mm  
Maximum value of SAR (interpolated) = 0.009 mW/g

