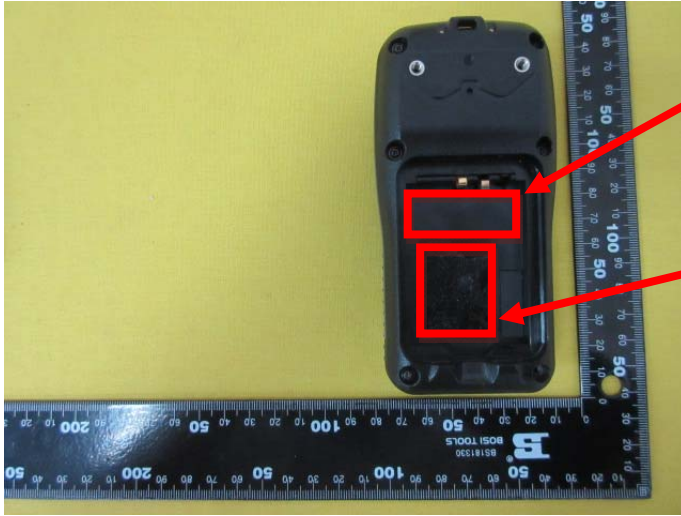


Label location



Device must be restricted to occupational use to satisfy FCC RF exposure compliance. See instruction manual for specific operating requirements.

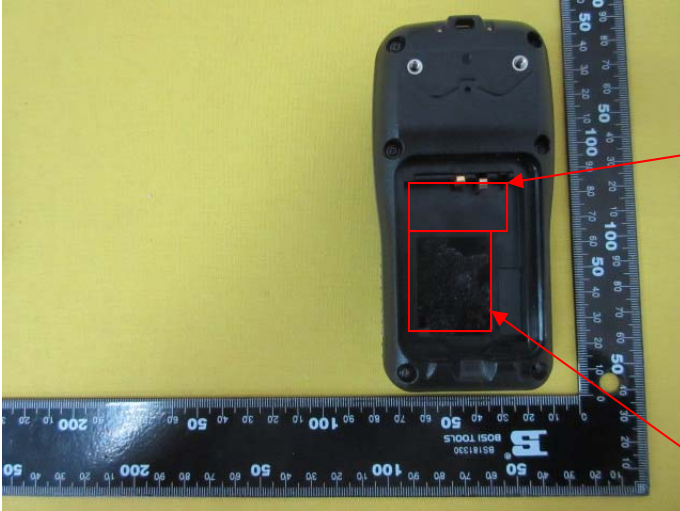
MR240 **RCA**

VHF Marine Two-Way Radio
Frequency:
TX: 156.05MHz-157.425MHz
RX: 156.05MHz-162.025MHz
Output: 4W /1W
FCC ID: XYH-MR240
IC: 8759A-MR240

CE Made in China

Place Barcodes
In This Area

Label location



Device must be restricted to occupational use to satisfy FCC RF exposure compliance. See instruction manual for specific operating requirements.

