

Table of Contents

Chapter 1	Introducing NETBOOK.....	1
1.1	Notes for this manual	1
1.2	Symbols for this manual	1
1.3	Safety precautions.....	1
1.4	Introduction.....	2
1.5	Product features	2
1.6	Preparing your NETBOOK	3
Chapter 2	Getting started	3
2.1	Using AC power	3
2.2	Using battery power	3
2.3	Using Touchpad.....	4
2.4	Emergency shutdown.....	4
Chapter 3	Using the NETBOOK	5
3.1	Basic operation	5
3.2	Network	5
3.3	Entertainment	6
3.4	Office software application	7
3.5	Others	8
Chapter 4	System settings	8
4.1	Certificates (Optional)	8
4.2	Date/time	8
4.3	Display (Optional)	9
4.4	Internet options	9
4.5	Keyboard	9
4.6	Mouse (optional)	9
4.7	Network and dial-up connections.....	9
4.8	Owner	10
4.9	Regional settings	10
4.10	Remove programs	11
4.11	System	11
4.12	Volume & Sounds.....	11
4.13	Power	11
4.14	Password	12
4.15	Storage Manager	12

Chapter 1 Introducing NETBOOK

1.1 Notes for this manual

Information provided in this manual may vary from model to model, so your model may not have some of the features described in this book. Pictures of features may also be different from actual one. This book reserves the right to change any information without any notice.

1.2 Symbols for this manual

A few notes and warnings are used throughout this guide, allowing you to complete certain tasks safely and effectively. These notes have different degrees of importance as follows



WARNING: Important information that must be followed for safe operation.



IMPORTANT: Vital information that must be followed to prevent damage to data, components, or persons.



TIP: Tips for completing tasks.



NOTE: Information for special situations

1.3 Safety precautions

The following safety precautions will increase the life of the NETBOOK. Follow all precautions and instructions. Except as described in this manual, refer all servicing to qualified personnel. Do not use damaged power cords, accessories, or other peripherals. Do not use strong solvents such as thinners, benzene, or other chemicals on or near the surface.

- Disconnect the AC power and remove the battery packs before cleaning. Wipe the NETBOOK using a clean cellulose sponge or chamois cloth dampened with a solution of nonabrasive detergent and a few drops of warm water and remove any extra moisture with a dry cloth.
- the NETBOOK using a clean cellulose sponge or chamois cloth dampened with
- a solution of nonabrasive detergent and a few drops of warm water and remove any extra moisture with a dry cloth
- DO NOT place on uneven or unstable work surfaces. Seek servicing if the casing has been damaged.
- DO NOT leave the NETBOOK on your lap or any part of the body to prevent discomfort or injury from heat exposure.
- DO NOT press or touch the display panel. Do not place together with small items that may scratch or enter the NETBOOK.
- DO NOT place or drop objects on top and do not shove any foreign objects into the NETBOOK.
- DO NOT expose to strong magnetic or electrical fields.
- DO NOT expose to dirty or dusty environments. Do not operate during a gas leak.
- DO NOT expose to or use near liquids, rain, or moisture.
- DO NOT use the modem during electrical storms.
- DO NOT carry or cover a NETBOOK that is powered on with any materials that will reduce air circulation such as a carrying bag.
- SAFE TEMP: This NETBOOK should only be used in environments with ambient temperatures between 5°C and 40°C.
- INPUT RATING: Refer to the rating label on the rear side of the NETBOOK and be sure that your power adapter complies with the rating.

1.4 Introduction

Top side



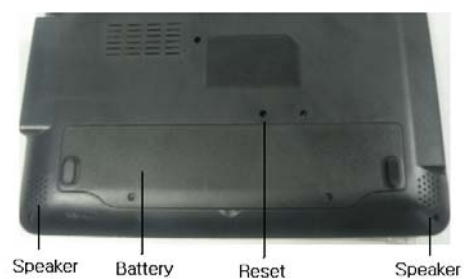
Right side



Left side



Bottom side



1.5 Product features

- Processor: VIA8505
- Display: 7-Inch high resolution TFT-LCD digital screen, True color image display
- Input: Standard keyboard and Mouse

- Sound card: AC97voice card
- Communication: Broadband internet access, 10/100MB Ethernet port, Build in Wireless LAN adapter
- System: Embedded Windows CE 6.0 operating system

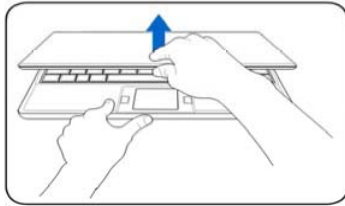
1.6 Preparing your NETBOOK

These are only quick instructions for using your NETBOOK. Read the following chapters for detailed information.

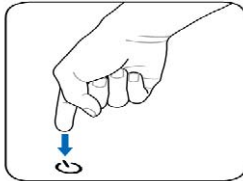
1. Connect the AC power adapter



2. Open the display panel



3. Turn ON the NETBOOK



Chapter 2 Getting started

2.1 Using AC power

The NETBOOK power comprises two parts, the power adapter and the battery power system. The power adapter converts AC power from a wall outlet to the DC power required by the NETBOOK. Your NETBOOK comes with a universal AC-DC adapter for connection to any 100V-120V as well as 220V-240V outlets without setting switches or using power converters. Different countries may require an adapter to connect the provided US-standard AC power cord to a different standard. Most hotels provide universal outlets to support different power cords as well as voltages. It is always best to ask an experienced traveler about AC outlet voltages before traveling.



The power adapter may become warm to hot when in use. Be sure not to cover the adapter and keep it away from your body.



Damage may occur if you use a different adapter to power the NETBOOK or use the NETBOOK's adapter to power other electrical devices. If there is smoke, burning scent, or extreme heat coming from the AC-DC adapter, seek servicing. Seek servicing if you suspect a faulty AC-DC adapter. You may damage both your battery pack(s) and the NETBOOK with a faulty AC-DC adapter.

2.2 Using battery power


The NETBOOK is designed to work with a battery pack. The battery pack consists of a set of battery cells housed together. A fully charged pack will provide several hours of battery life. Additional battery packs are optional and can be purchased separately through an NETBOOK retailer. Remember to fully charge the battery before first use and whenever it is depleted to prolong battery life.



Only use battery packs and power adapters supplied with this NETBOOK or specifically approved by the manufacturer or retailer for use with this model or else damage may occur to the NETBOOK.

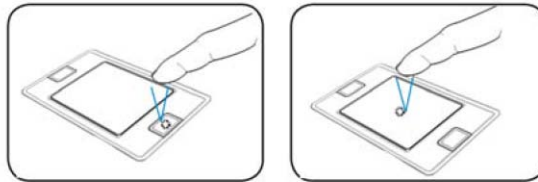
Battery care The NETBOOK's battery pack, like all rechargeable batteries, has a limit on the number times it can be recharged. The battery pack's useful life will depend on your environment temperature, humidity, and how your NETBOOK is used. It is

ideal that the battery be used in a temperature range between 5°C and 40 °C. You must also take into account that the NETBOOK internal temperature is higher than the outside temperature. Any temperatures above or below this range will shorten the life of the battery. But in any case, the battery pack's usage time will eventually decrease and a new battery pack must be purchased from an authorized dealer for this NETBOOK. Because batteries also have a shelf life, it is not recommended to buy extras for storing.

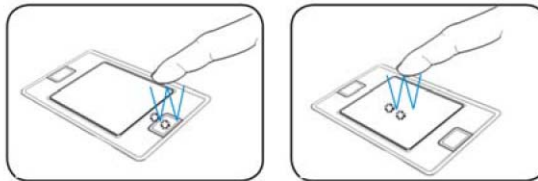
 For safety reasons, DO NOT throw the battery in fire, DO NOT short circuit the contacts, and DO NOT disassemble the battery. If there is any abnormal operation or damage to the battery pack caused by impact, turn off the NETBOOK and contact an authorized service center.

2.3 Using Touchpad

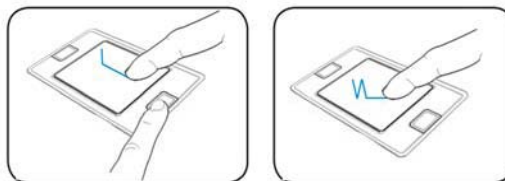
Clicking/Tapping-With the cursor over an item, press the left button or use your fingertip to touch the touchpad lightly, keeping your finger on the touchpad until the item is selected. The selected item will change color. The following 2 illustrations produce the same results.



Double-clicking/ Double-tapping-This is a common skill for launching a program directly from the corresponding icon you select. Move the cursor over the icon you wish to execute, press the left button or tap the pan twice in rapid succession, and the system launches the corresponding program. If the interval between the clicks or taps is too long, the operation will not be executed. The following 2 illustrations produce the same results.




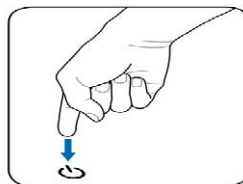
Dragging-Dragging means to pick up an item and place it anywhere on the screen you wish. You can move the cursor over the item you select, and while keeping the left button depressed, moving the cursor to the desired location, then release the button. Or, you can simply double-tap on the item and hold while dragging the item with your fingertip. The following illustrations produce the same results.



2.4 Emergency shutdown

In case your operating system cannot properly turn off, there is an additional way to shutdown your NETBOOK:

Shutdown: Hold the power button  until the system shut down.



Your NETBOOK isn't with a reset button, so you can not reset your NETBOOK by it. If you want to turn on your

NETBOOK after emergency shutdown, you should wait for 3~5 seconds, and then press the power button once again.



DO NOT use emergency shutdown while data is being written or read; doing so can result in loss or destruction of your data.

Chapter 3 Using the NETBOOK

3.1 Basic operation

Power on

Power on and the computer enters the loading wince picture below after a few seconds.

Desktop





This interface is the desktop interface accessible to program. The same style as other Windows systems, “My Computer” can be accessible from here.



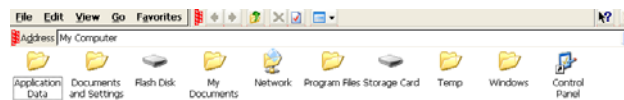
Note: Clicking an icon twice is double click and clicking once is click. Clicking an icon is right clicking the icon; all the right clicks of the icon below are such an operation.

Shut down

Click on  and select “ Shutdown” from list.

My Computer

Double click “My Computer” and the following interface will appear.



The “Flash Disk” icon behaves as a “hard drive”, “Storage Card” is “SD Store Card” drivers. Except “Local Disk”, “Storage Card” and “Application Data”, all the other files are Windows system files, which can not be altered at will. Two folders, “My Document” and “Storage Card” are introduced hereunder.


3.2 Network

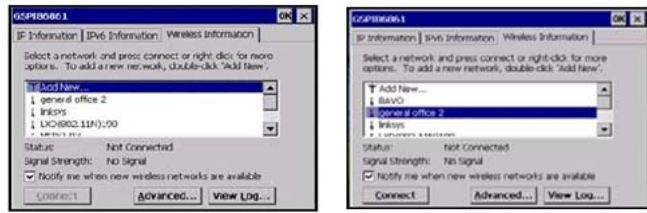
Network connection / disconnection

1. Wireless connection

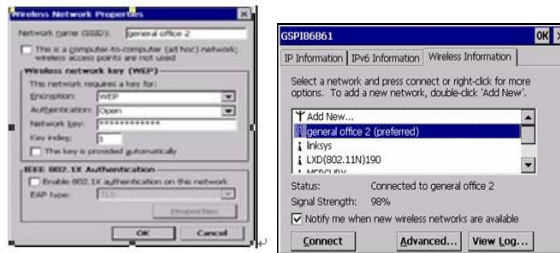
(1) Click “WIFI Power” icon on the desktop, click the bottom “Power on”-“OK”.

(2) Click the wireless icon

 in taskbar at bottom right corner, as shown in the figure. The computer will automatically search for WIFI network, and arrange it in line with strength of signal. Select your favorite network as the figure below shows and click “Connect”



(3) As it is shown in the figure, configure it in the dialog that pops up according to actual conditions (if the WIFI network requires password, please inquire network administrator, because password must be input to connect). The display after connected to WIFI network is as shown in the figure below.



2. Wireless disconnection If you want to disconnect the network, at the “Wireless Information” item, you can right click the network which has been connected, choose “Delete”, and then the network will be disconnected.

IE browser

Click “internet explorer” icon on the desktop, input website by means of keyboard, as shown in the figure below:



Windows messenger

Click “Windows messenger” icon on the desktop, input account number and password by means of keyboard, as shown in the figure below:



3.3 Entertainment

Video play

Open video folder, as shown in the figures below. Double click a video play file to start playing. The player is TCPMP. Click the icon in menu bar or press the left key for full screen playing. Press the left key once again, and then the video will stop playing and quit full screen.



Photo browsing

Click “Image Viewer” icon, choose the image format, and then open the photo folder, as shown in the figures below. Double click the photo to start browsing.



Media Player

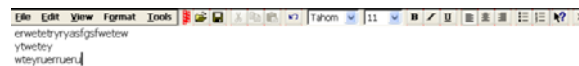
On the desktop, double click the “Media Player” icon and click menu bar “file” -“open”, chose your file, The Media player will play it .



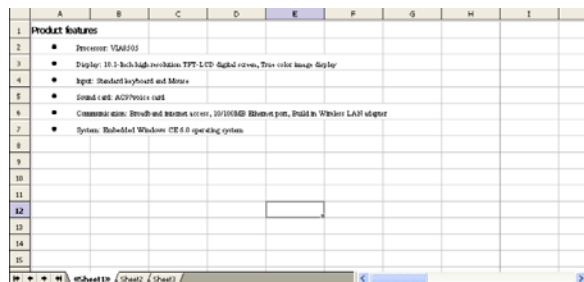
3.4 Office software application

The office system of Mini laptop consists of Word Viewer ,Excel Viewer, PowerPoint Viewer,PDF Viewer

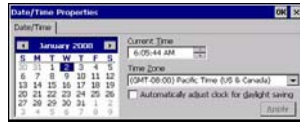
Word Viewer




Excel Viewer



PowerPoint Viewer

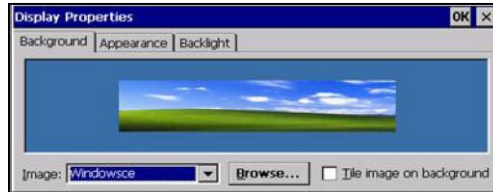


To display and set time, date and time zone of the current system. User can set the time, date and time zone according to actual conditions. The application of this function is similar to the “Time and date” setting in “Control panel” of PC.

 NOTE: the “Time and Date” setting can also be opened by clicking directly the time in taskbar

4.3 Display (Optional)


Double click “Display” icon in “Control panel” and the following interface will appear. User can set different display setting like Background, Appearance & Backlight.



4.4 Internet options

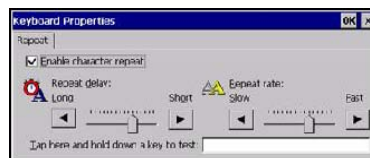
Double click “Internet options” icon in “Control panel” and the following interface will appear:



 TIPS: Users are recommended to use the default and not to alter the network setting rashly. The ex-works set defaults have been adjusted to the optimum status. Advanced level users can set upon their conditions.

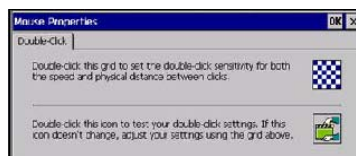
4.5 Keyboard

Double click “Keyboard” icon on “Control panel” and the following interface will appear. This is much the same as the function of “keyboard” in “Control panel” of PC. The function is mainly used to adjust the repeat input of soft keyboard and the setting of repeat delay time. A test dialog is available as shown below to test your setting. The “Enable character repeat” in the interface is the choice box of “Enable character repeat”; “Repeat delay” is for setting repeat rate. The white zone at the bottom is a zone to test the two settings by clicking the zone and pressing some key.



4.6 Mouse (optional)

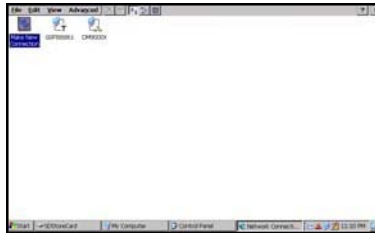
Double click “Mouse” icon in “Control panel” and the following interface will appear.



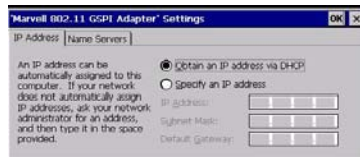
Double clicks the grid icon above to set the mouse double-click speed. Double-click the icon below to test the mouse double-click setting.

4.7 Network and dial-up connections

Double click “Network and Dial-up connections” icon in “Control panel” and the following interface will appear.

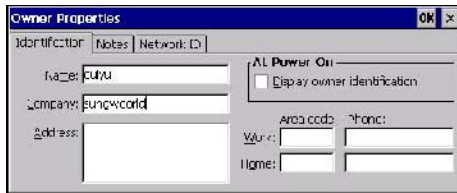


Double click and set your settings for internet, these settings are provided by your internet service provider. Set your TCP IP setting as shown in below figure.

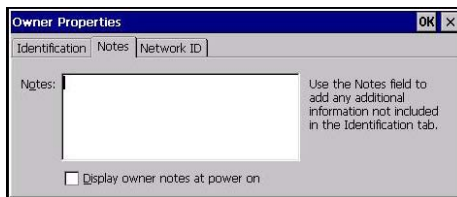


4.8 Owner

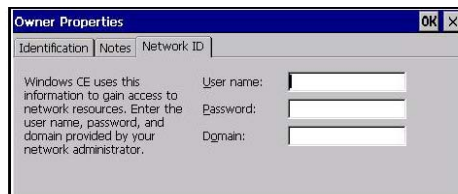
Double click "Owner" icon in "Control panel" and the following interface will appear.



Set and display the owner properties information of the current system.



Use the "Notes" field to add any additional information not included in the options.



IMPORTANT: Windows CE uses this information to gain access to network resources, enter the user name, password and domain provided by your network administrator.

4.9 Regional settings

Double click "regional settings" icon in "Control panel" and the following interface will appear.



Display the current regional settings and the region where the setting is.



“User interface language” and “input language” are default settings of the system.

4.10 Remove programs

Double click “Remove programs” icon in “Control panel” and the following interface will appear.



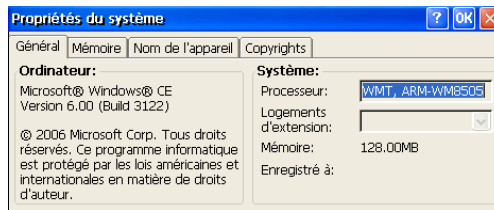
User can Enable/disable direct connection to the desktop computer. For connection with desktop computer use USB.



TIP: The baud rate of the device & desktop computer must be the same.

4.11 System

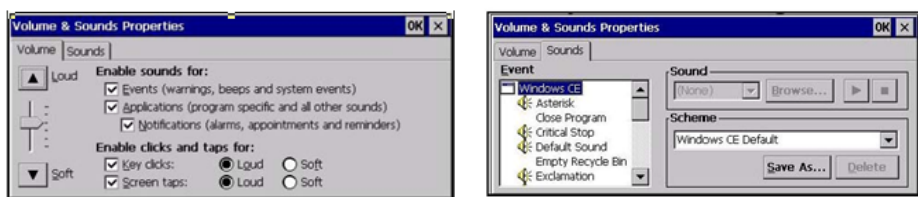
Double click “System” icon in “Control panel” and the following interface will appear.



Display the system properties of the system, e.g. process type, memory size, etc. Memory size can be altered here. User can perform the operations following the prompts on the tab.

4.12 Volume & Sounds

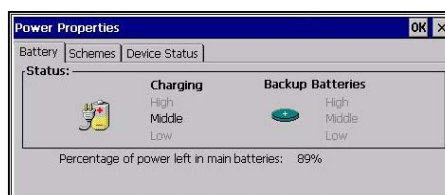
Double click “Volume & sounds” icon in “Control panel” and the following interface will appear.



Display and set the volume and sound scheme of the current user.

4.13 Power

Double click “Power” icon in “Control panel” and the following interface will appear.



“Percentage of power left in main batteries” is the display of percentage of power left in main batteries.



NOTE: The planning of integral power of this Mini laptop is much the same as the “Power” management in control panel of PC. Advanced level users can set upon their specific conditions and general users can adopt the defaults.

4.14 Password

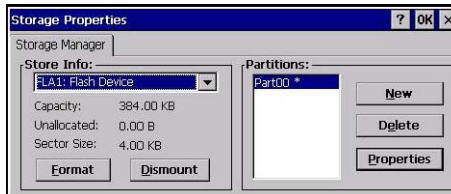
Double click "Password" icon in "Control panel" and the following interface will appear.



This is used to protect personal privacy and data security. Power on password protection or screen saver password protection can be set. "Password" is for inputting password. "Confirm password" is for confirming password (the passwords input into these two boxes must be the same) "At power on" is password protection when it is powered on "Screen saver" is password protection for screen saver.

4.15 Storage Manager

Double click "Storage Manager" icon in "Control panel" and the following interface will appear.



The main function is Format and delete storage device. In the "store info" list, you can select a storage device and click the lower left "Format" button, at this time you have



If it is not necessary, do not choose to format storage devices

Disk format will be loss your data and disk drive



If at any time in the future you should need to dispose of this product please Note that:

Waste electrical products should not be disposed of with household waste. Please recycle where facilities exist. Check with your Local Authority or retailer for recycling advice. (Waste Electrical and Electronic Equipment Directive)

Chapter 5 FCC WARNING

Changes or modifications not expressly approved by the party responsible for compliance could void the user's authority to operate the equipment.

This equipment has been tested and found to comply with the limits for a Class B digital device, pursuant to Part 15 of the FCC Rules. These limits are designed to provide reasonable protection against harmful interference in a residential installation. This equipment generates uses and can radiate radio frequency energy and, if not installed and used in accordance with the instructions, may cause harmful interference to radio communications. However, there is no guarantee that interference will not occur in a particular installation. If this equipment does cause harmful interference to radio or television reception, which can be determined by turning the equipment off and on, the user is encouraged to try to correct the interference by one or more of the following measures:

- Reorient or relocate the receiving antenna.
- Increase the separation between the equipment and receiver.
- Connect the equipment into an outlet on a circuit different from that to which the receiver is connected.
- Consult the dealer or an experienced radio/TV technician for help