

# Minibook

## User Manual



**Windows® CE Edition**

## **Declaration:**

Please be noted that we won't charge any loss, damage or wound caused by misuse or any incorrect operation which is not allowed by this manual.

### **About the (user) manual:**

*All Rights Reserved.*

*Trademarks and brands mentioned in this manual are owned by their original owners.*

*Your products may not be just the same with what we defined in this manual.*

\* Please read this manual before using your computer. Put it at hand for future reference.

# Contents

---

1.	Welcome .....	4
2.	System Overview .....	4
3.	System Specification .....	4
4.	Minibook Description.....	5
	4.1 Hardware Description .....	5
	4.2 Operating System Description .....	6
5.	Connecting to your desktop PC .....	7
6.	Battery Management.....	12
7.	Basic Operation .....	13
	7.1 Power On and Off .....	13
	7.2 Using Applications .....	13
	7.3 Keyboard Introduction .....	14
	7.4 Mouse Pad .....	15
	7.5 How to use SD Cards .....	16
	7.6 Connecting USB Devices .....	17
	7.7 Communication with Ethernet LAN .....	18
	7.8 WiFi Connection Setting .....	19
8.	Applications.....	22
	8.1 Internet Explorer .....	22
	8.2 Core Player .....	23
	8.3 Word Processing - WordPad .....	24
	8.4 PDF Viewer – Foxit Reader Pro.....	24
	8.5 Spreadsheet - SpreadCE .....	25
	8.6 Internet Messenger-MSN .....	25
	8.7 Multimedia .....	26
	8.8 File Compression – Pocket RAR .....	26
	8.9 Games .....	26
9.	System Settings.....	27
	9.1 Certificates .....	27
	9.2 Time Settings .....	27
	9.3 Keyboard .....	27
	9.4 Display .....	28
	9.5 Internet Options .....	28
	9.6 Mouse .....	29
	9.7 Network Connections .....	29
	9.8 Owner Properties .....	29
	9.9 Password Settings .....	30
	9.10 Power Management .....	30
	9.11 System .....	30
	9.12 Memory Management .....	30
	9.13 Regional Settings .....	31
	9.14 Volume and Sound .....	31
10.	Troubleshooting .....	32
11.	Warranty .....	33

# 1. Welcome

Congratulations on purchasing this Minibook Series Webbook mobile device powered by the Microsoft® Windows CE® 6.0 Operating System. The size of the Minibook allows you to carry it around with you and its capabilities allow you keep any important information close at hand. If you are familiar with Microsoft Windows products, you will notice that your Minibook has a lot of the same functionality you are used to, making it easy for you to be productive quickly.

# 2. System Overview

The Minibook, is highly portable & compact in its design, with good performance, adaptability and robustness. The Minibook optimised Windows CE based operating system gives a user friendly interface and ensures optimum performance with the minimum of system resources.

# 3. System Specification

Operating System:	WinCE 6.0
CPU:	ARM1136 533MHz Multimedia Processor
Display:	Colour LCD 7" WVGA (800x480) digital TFT LCM
Memory:	DDR: 128MB
NAND Flash Storage:	128MB-8GB(Optional)
Ports:	2 X USB Port, with USB 2.0 specification <b>Note: These USB Ports support Keyboards and Mice USB DISK etc</b> 1 X USB Device Port <b>Note: This USB Ports support connecting to a PC via ActiveSync</b> 1 X Ethernet LAN Port (RJ-45) 1 x SD Card support WIFI High speed for LAN wireless connection IEEE 802.11b/g up to 54Mbps data rate Support WPA (WIFI Protected Access), AES / CCMP & WEP with TKIP security
Miscellaneous:	Microphone Jack for voice recording Ear phone Jack and internal Speaker
User Interface:	80 key keyboard Touch pad
Video Format support:	AVI, MP4, 3GP (MPEG4 profile), ASF (MPEG4 profile)
Music format support:	MP3, WMA, AAC, AAC+, CAT, max up to 48KHz at 320kbps
Battery:	Built-in 1800mA/H Li-ion

## 4. Minibook Description

### 1. Hardware Description

#### Open Front View



LED status indicators:

- ① Battery Charge status
- ② Power on / off
- ③ Num Lock status
- ④ Caps Lock status
- ⑤ Scroll Lock status

#### Back View



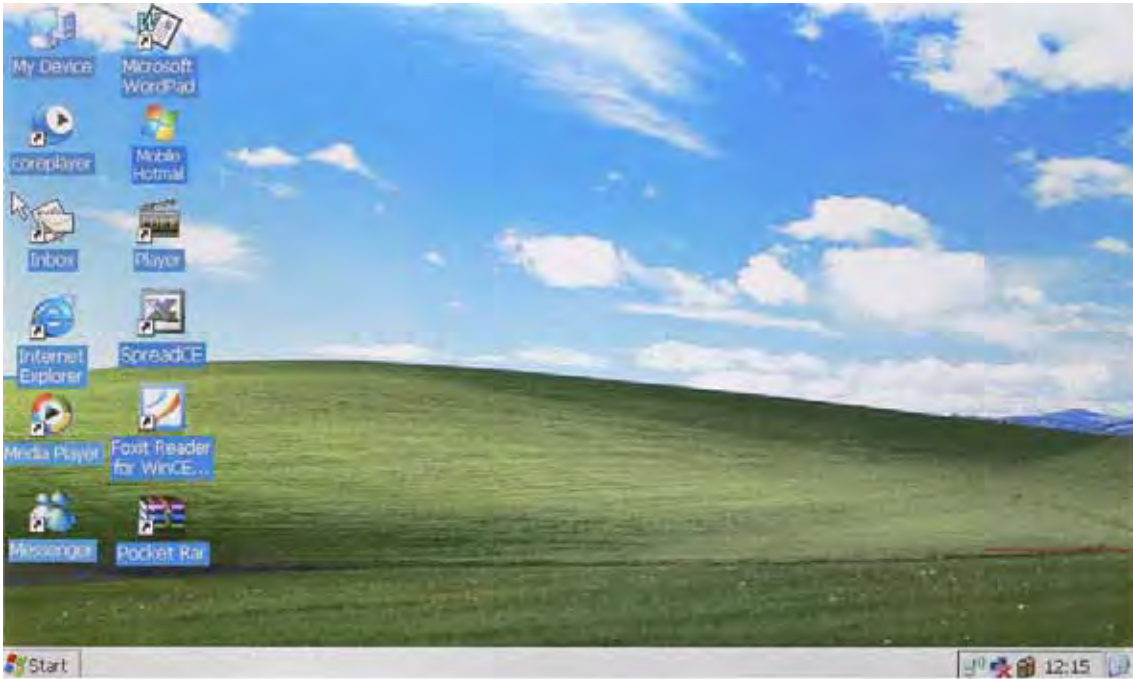
#### Left side View



#### Right side View

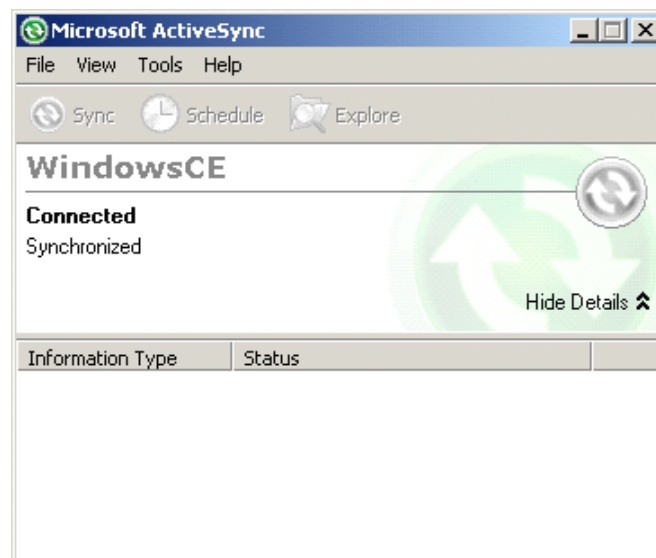


## 2. Operating System Description



Microsoft Windows CE is a scaled-down version of the Windows Operating System which has been designed specifically for low powered portable devices like the Minibook. With a user interface that anyone who has used Windows before will recognize straight away, Windows CE allows you to be up and running with the Minibook in a short period of time.

The Minibook supports connecting to a PC via ActiveSync when running on Windows 2000/XP or Windows Mobile Device Center when running on Vista. This allows files to be transferred, email to be synchronised and new applications to be installed. Because of this Windows CE enhances the Minibooks functionality and usability.



Note: ActiveSync is not supplied in the box, but can be downloaded direct from Microsoft at: <http://www.microsoft.com/windowsmobile/en-us/downloads/microsoft/default.msp>

## 5. Connecting to your desktop PC

Your Minibook Webbook works perfectly as a standalone computer. But to get the most out of it, you will want to connect to your desktop or notebook PC. This chapter describes how to establish a connection between your Minibook and a desktop PC running ActiveSync or Windows Mobile Device Center.

### Connecting for the first time

You can connect your Minibook to a desktop PC using a USB cable (which is included). Before you connect, you must install the required Microsoft software:

Windows 2000 / XP – ActiveSync 4.5

Windows Vista - Windows Mobile Device Center

Once this software is installed on the desktop PC, you can connect your Minibook and establish a partnership.

### Connecting by USB port

1. Connect the flat USB "A" connector to an available USB port on your desktop PC.
2. Connect the flat USB "A" connector to the rear port on your Minibook.

Your Minibook should establish a connection to the desktop computer



**Rear ActiveSync USB Port**

### Setting up Microsoft ActiveSync and establishing a partnership on Windows 2000 / XP

Microsoft ActiveSync enables you to synchronize the information on your desktop PC with the information on your Minibook. Synchronization compares the data on your device with your desktop PC and updates both computers with the most recent information including Word, Excel and PDF documents.

With Microsoft ActiveSync, you can also:

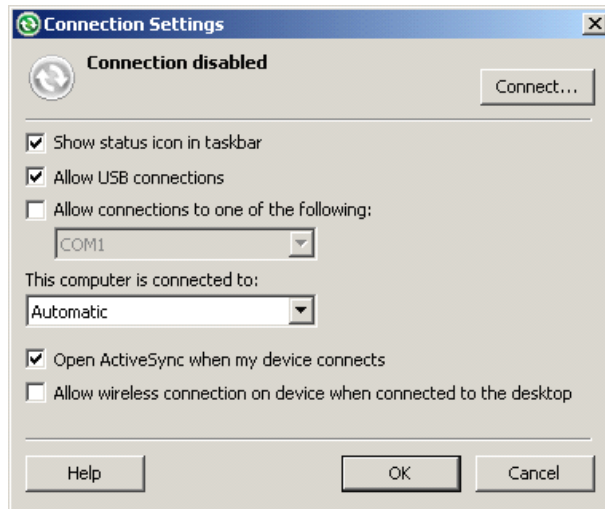
Back up and restore your Minibook data.

Add and remove programs on your Minibook.

Move and copy files, instead of synchronizing them.

Before connecting to your Minibook for the first time using ActiveSync you will need to configure it to allow connections via USB connections.

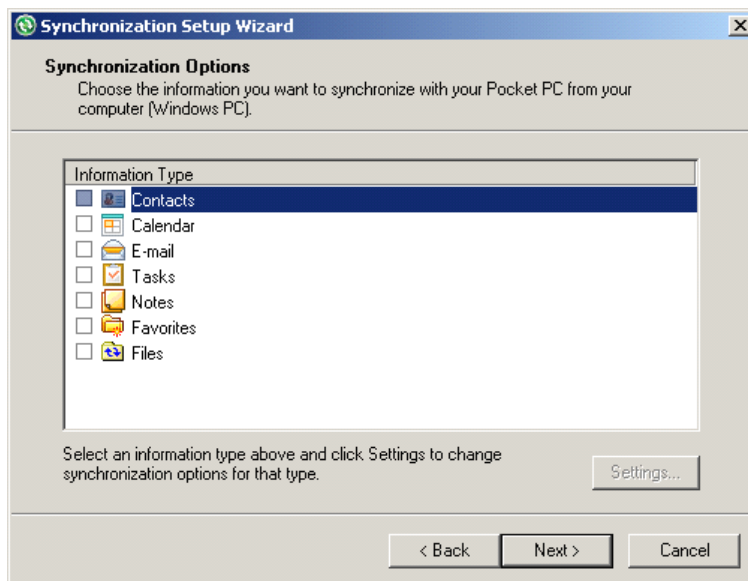
Click the "File" menu option and select "Connection Settings...", this will open the Connection Settings window. Click in the Allow USB connections check box and then click the "OK" button as shown below:



Once Connection Settings have been changed ActiveSync will automatically connect to the Minibook and start the Synchronization Setup Wizard.



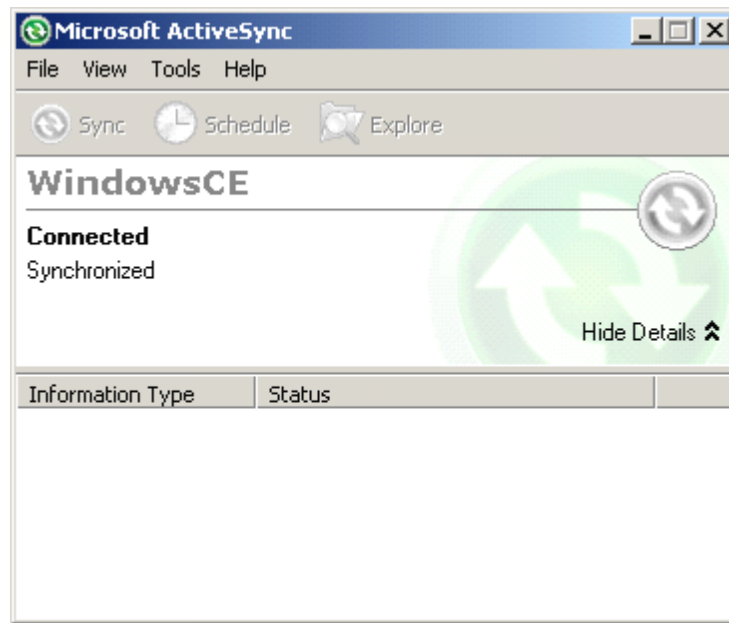
Click Next



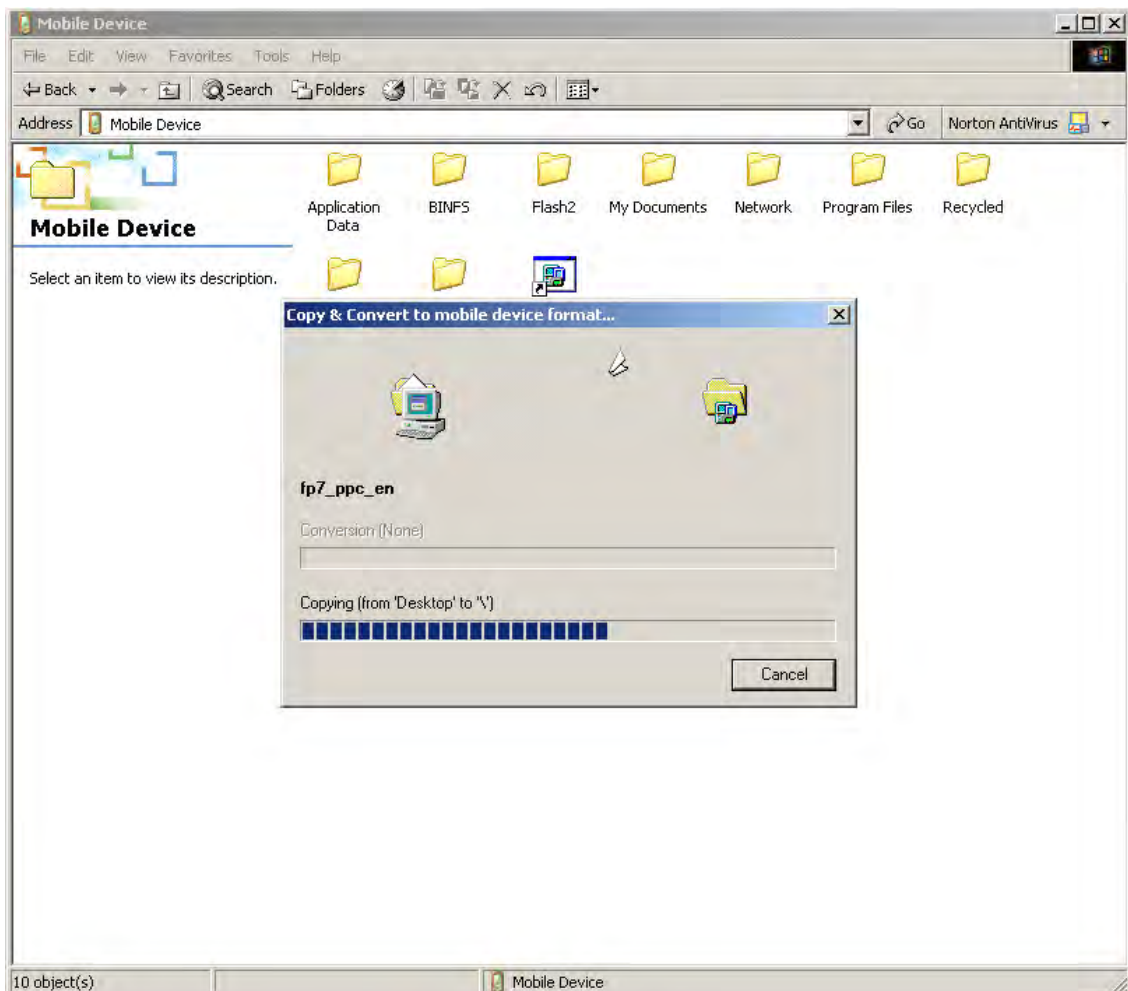
Select the Information Types you wish to synchronize, initially we suggest just selecting Files. Then click Next, Finish and Next to finish the configuration process.



The Minibook will now be connected to your PC and will synchronize any of the file types you have selected.



The Minibook will show up as a Mobile Device in "My Computer" or "Windows Explorer" and files can be copied to it directly from here:



## Setting up Windows Mobile Device Center and establishing a partnership on Windows Vista

Windows Mobile Device Center replaces ActiveSync on Windows Vista and enables you to synchronize the information on your desktop PC with the information on your Minibook in a very similar way.

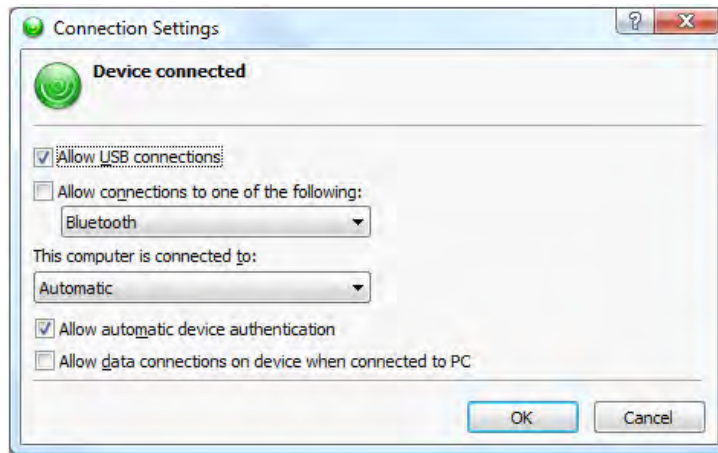


Before connecting to your Minibook for the first time using Mobile Device Center you will need to download the latest version from <http://www.microsoft.com/windowsmobile/en-us/help/synchronize/device-center-download.aspx>. Or you can connect the Minibook and perform an online update, which will allow Microsoft USB Sync to be added. Once installed you may have to restart your system. Note: The latest version of this software is required so that the Minibook is detected correctly.

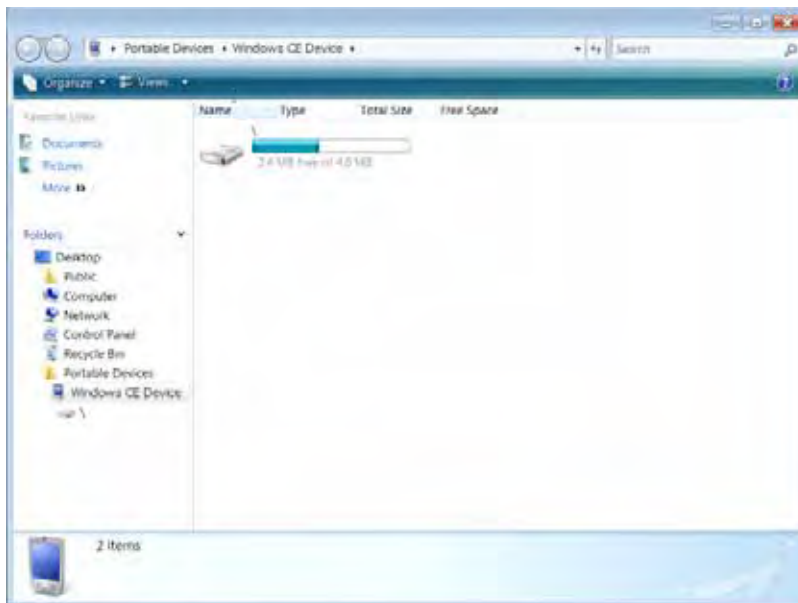
Now you will need to configure Windows Mobile Device Center it to allow connections via USB connections. Click the "Mobile Device Settings" link and select "Connection Settings".



This will open the Connection Settings window. Click in the Allow USB connections check box and then click the "OK" button as shown overleaf:



To copy files to the device click the "File Management" Link and select "Browse the contents of your device". This will show the storage on the Minibook and allow you to navigate through any folders on the device



To synchronize files within certain folders on your PC, click the "Mobile Device Settings" link and select "Change content sync settings", then add any folders you would like to synchronize by clicking the "Add" button and selecting the folders.



For more information on ActiveSync or Windows Mobile Device Center please refer to this web site: <http://www.microsoft.com/windowsmobile/en-us/help/synchronize/default.aspx>


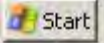


## 6. Battery Management


The Minibook uses an internal Li-Ion Battery, to ensure the best performance from this battery please use the following procedure to condition the battery. Before turning on the Minibook for the first time plug the charger in and charge the battery until fully charged (the charging light has gone out). During use we suggest charging the battery whenever the battery power is low and allow the battery to fully charge before disconnecting the charger.

### How to Charge the Battery

1. Plug in the Power adapter to Power adaptor port of Minibook, the Battery charge LED will light up. Charging will be completed once the LED has turned off.
2. To see the charging status, turn on the Minibook by pressing and holding the Power on/off button. Once the system has booted to the Windows CE desktop, the Charging status will be displayed on the right hand side of the Menu bar as indicated below.
3. During Battery Charging the Minibook can be used as normal, (Please be note that the charging time will be longer when the system is in use).
4. Charging the Battery normally requires around 3 hours from low battery charge to fully charged. During Charging the machine will become warm, but this is normal.

### Checking the Battery Level

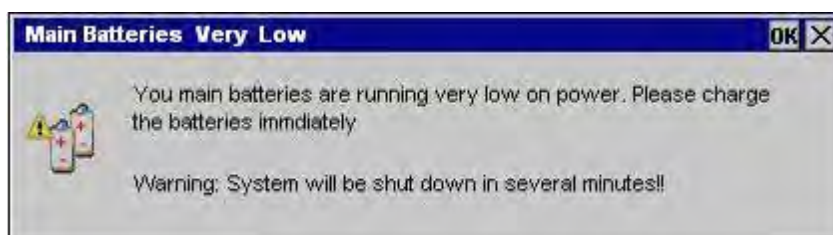
Double clicking the battery icon  will show the percentage of battery power remaining. This icon can also be double clicked to show the Power Properties window. This window can also be shown by clicking the "Start"  button, selecting  and then 

When the Control Panel is shown, click the Power Options icon  to show Power Properties.



Status	Description
Good	Good Battery Level
Low	Low Battery Level, should be charged
Very Low	Low Battery Level, must be charged

When the battery is almost empty, the "Main Batteries very low" popup will appear as shown below, the Minibook will be automatically power off after this popup has been displayed for a short time.



## 7. Basic Operation

### 1. Powering On and Off



1. Power On: Press and hold the power button until the Windows CE Operating System starts to boot.

2. Power Off: There are two ways to turn off the Minibook:

- ① Press the power button until the OS shows that it is shutting down.
- ② Power off through "Start" Menu selection.

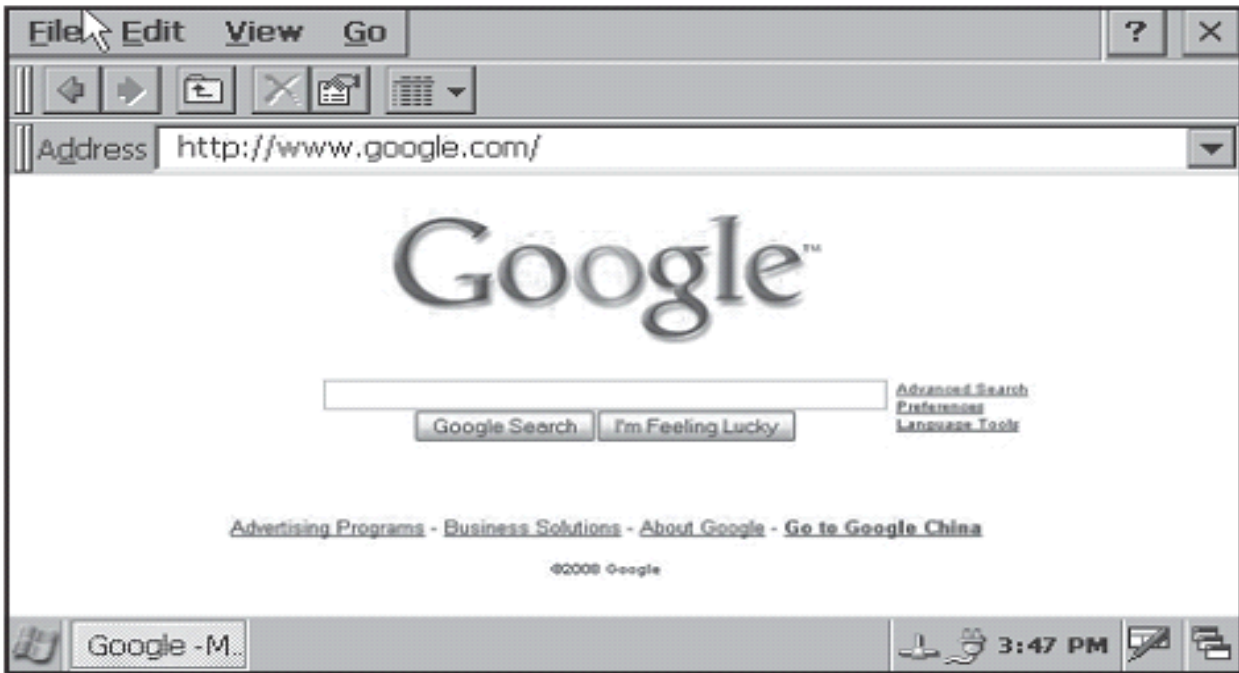
### 2. Using Applications

System applications can be started either by clicking on the icon of the relative application on the Desktop, or by clicking the Start button and selecting the required program from the Programs Menu.


1. Open through "Start" Menu, Click "**Start**"



Double click the required Program (such as Internet Explorer as shown below)



2. Open the Program directly by double clicking the desktop icon.

Please note, once several programs have been started, the  icon can be used to minimize all the open program windows, this can be used to un-clutter the screen.

In order to use the Minibook in most efficient way, it is suggested not to start too many programs at the same time, or have too many Internet Explorer windows open together. Otherwise the system may start to slow down.

### 3. Keyboard Introduction

The Minibook uses an 80 key standard UK keyboard layout.





The Number Keypad (Blue Symbols on the Keyboard) becomes active when the Num Lock key has been pressed (the NUM Lock status LED will light). Pressing the Num Lock again will disable this function.



There are also a number of Function Keys which can be used

- |   |   |                             |
|---|---|-----------------------------|
|  |  | Document Page (scroll up)   |
|  |  | Beginning of Line           |
|  |  | Document Page (scroll down) |
|  |  | End of Line                 |

#### 4. Mouse Pad

The Mouse pad is a pointer device which can work as a normal mouse. The surface of the mouse pad can sense finger movement in order to control the pointers movement on the screen. The two buttons on the left and right side of the pad operate in exactly the same way as the buttons on a normal mouse.



The Mouse Pad can also have the same functionality as pressing the left mouse button as described:

Fast Single Tap of Pad : Normal selection function

Fast Double Tap of Pad : Start up the application

Moving an Object :

1. Move pointer to the object which you want to move, press and hold Left button of the PAD, then move the pointer to the location required.
2. Release the button and finger on the pad

**Please note:**

Please don't put objects on the mouse pads surface which could scratch or compress the pad because this could cause permanent damage.

**5. How to use SD Cards**

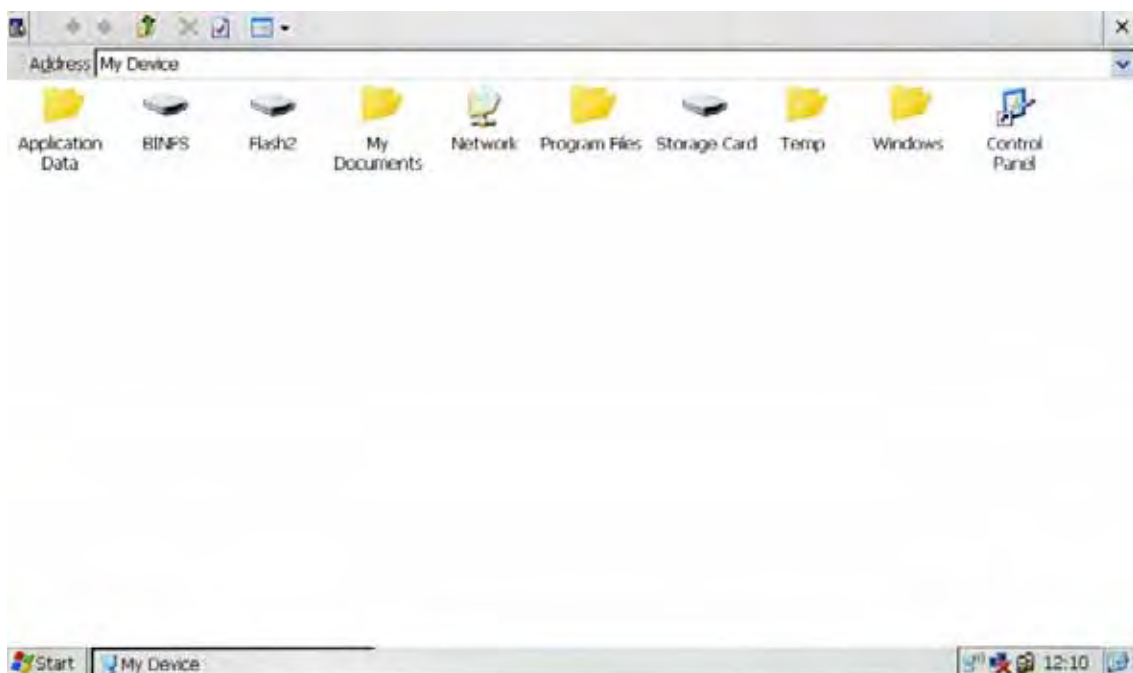
Using the SD Card:

1. Please insert the SD Card (Brand name side face down) into the Card slot as shown below.




Push the SD Card into the slot until it "clicks" into place to confirm the card is in correctly and locked into position. To view documents on the SD Card:

1. Double Click "My Computer" on desktop, and the following screen below will be displayed.





2. Double click the  icon as to view the files stored on the SD Card.
3. Files or applications stored on the SD Card can be opened or run directly from the Card or copied to the main system drive.

To remove the SD card:

1. Close any applications or documents which have been opened from the SD Card.
2. Lightly press the card, it will part eject automatically, remove the card from the slot.

**Note:**

1. Please insert the card the right way round and don't try to force a card into the slot.
2. If an SD Card has been locked, the Minibook cannot format or copy data to the card.
3. Please do not repeatedly insert and remove the card, this may cause damage to the card.
4. We suggest using major brands of SD card to avoid any incompatibility.

## 6. Connecting USB Devices

The rear USB port is the only port that supports ActiveSync, so please use this port when connecting the Minibook to a PC.



**Rear ActiveSync USB Port**

The side USB ports should be used for plugging in peripherals such as USB Keyboards or mouse,usb disk





**Side USB Ports**

For more information on ActiveSync or Windows Mobile Device Center please refer to this web site:  
<http://www.microsoft.com/windowsmobile/en-us/help/synchronize/default.aspx>

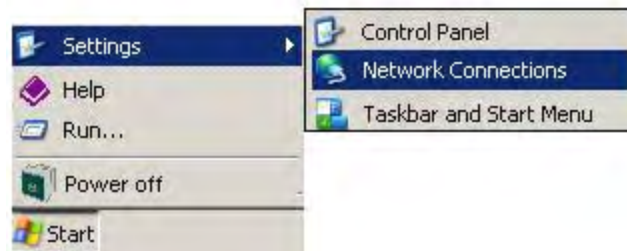
## 7. Communication with Ethernet LAN

The Minibook has a 10/100 Ethernet Port that can be used to connect to a LAN (Local Area Network).




Once a network has been connected, the network icon will change from  to  in the Start bar, at the bottom right hand side of the display.

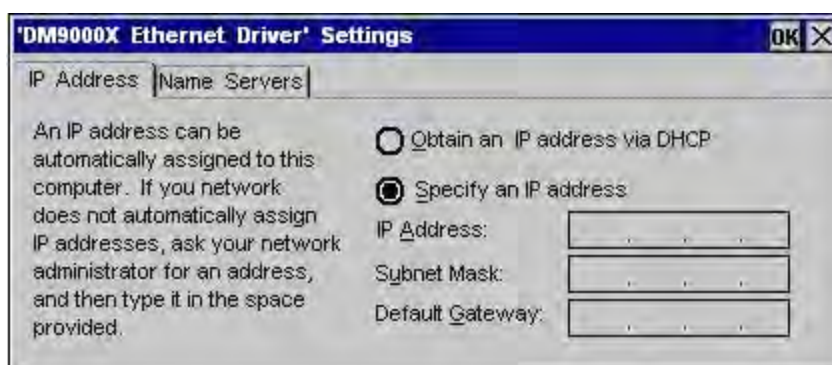
1. Click the "Start" icon.



2. Select "Network Connections" and the following will be displayed:



3. Select  and double click it, the Ethernet Driver Settings screen will appear.



4. Move the pointer to "Obtain an IP address via DHCP" to allow the Minibook to automatically be assigned it's networking settings from a Router as shown below:



5. Click "OK" to confirm the setting.

6. Network settings can also be manually entered, if "Specify an IP address" is selected instead.

**Note:** Please unplug all the connections before moving the Minibook, as damage may occur if any force is applied to these connectors.


## 8. WiFi Connection Setting

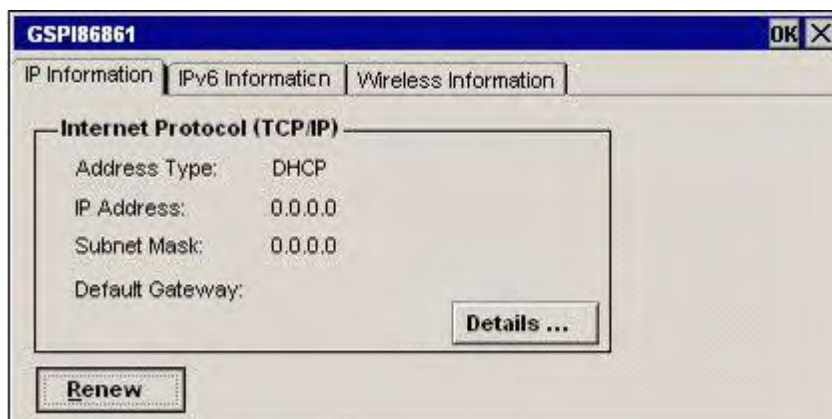
Before using the WiFi Connection, please make sure you know the SSID (name of the network to which you are going to connect) and security key (such as WEP, WPA) assuming the network is secure.

Switch On/Off WiFi function

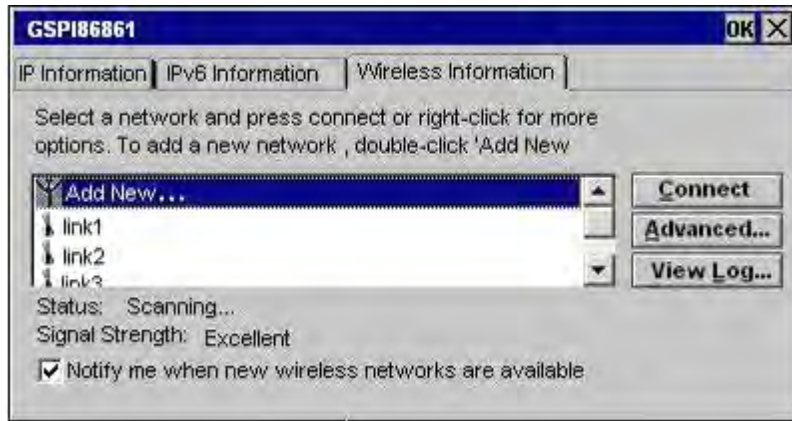
The Minibook contains an internal WiFi device, that is switched on by default. To turn the device Off or On, click the Start button, click "Settings" and then click "Control Panel", finally select "WiFi Configuration". The WiFi Power Off window will appear as shown below, select "On" or "Off" as necessary:



To find out the status of the WiFi Device, double click the  icon on the menu bar, the following window will pop up.

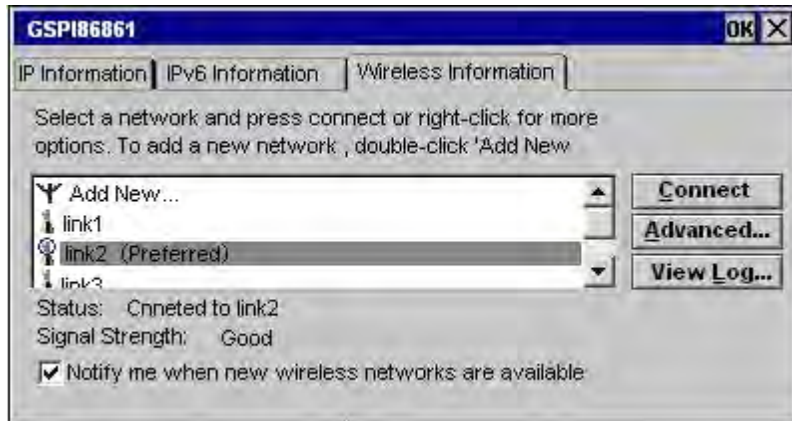




Select "Wireless Information", then the following screen will appear:



All the wireless routers within range will automatically be detected as shown above. Select your router by clicking the router name in the list, such as "link2" shown above.

If network doesn't have password, you can click **Connect** to start the connection, if successful, the Dialog box "Wireless Information" will show the related information such as connection status, signal strength as shown below:



If the connection is successful, the menu bar icon will change from  to  this icon will flash during data transfer. If security Encryption is enabled on the Wireless Network you are connecting to, the Wireless Network Properties screen will be shown. This will require the Encryption type to be chosen, two Security types are supported, WEP (16 bit and 32 bit), and WPA-PSK.

**Note:** The Security Key may be printed on a sticker on the Wireless Router, or it may have been supplied with the documentation you received with the equipment. If not please contact your service provider or whoever setup the Router to obtain the correct information for your wireless network.



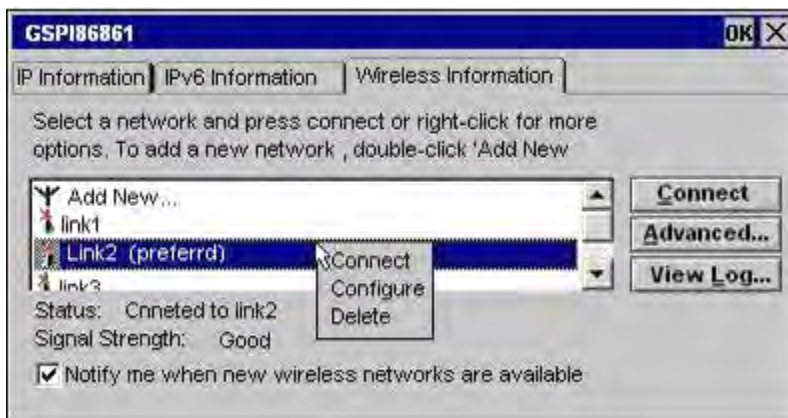
Please enter the Password in the "Network Key" box as below:



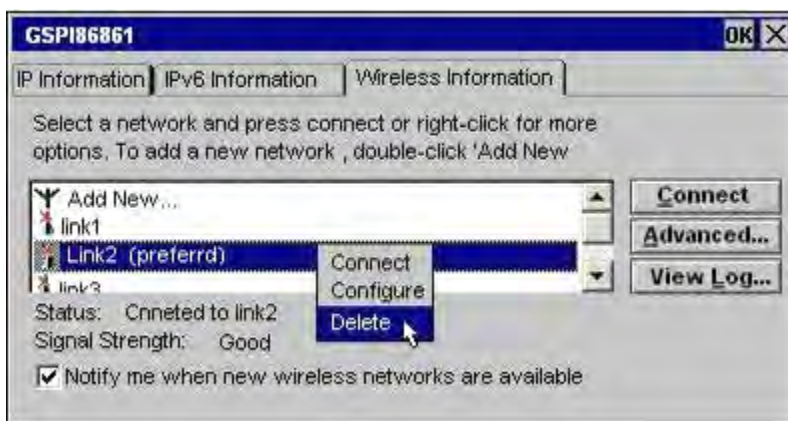
After confirming the settings by clicking "OK", it will go back to "GSPi86861" interface. Click **Connect** to make the connection. If the connection fails, this may be because the wrong password has been entered.

You can also try deleting all the detected router names (by right click and selecting "delete"), then switch the WiFi off and on again, then entering related data for your wireless network and repeat the procedure for your wireless network name again as described before.

To delete a detected wireless network, in the window "GSPi86861", press the right button once the correct wireless network has been selected as shown:



Select the "Delete" option




Note: It is recommended switching off WiFi when not in use, this will save power consumption and allow the battery to last longer.

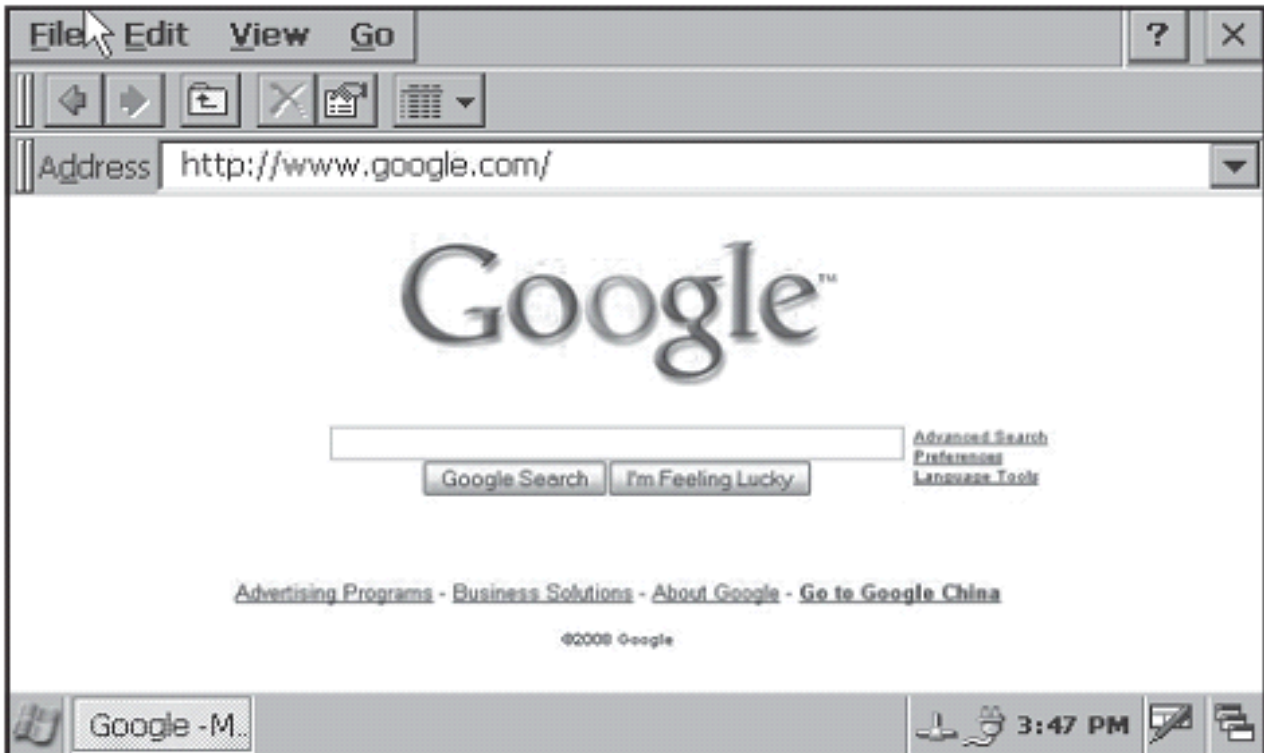
## 8. Applications


### 1. Internet Explorer

You can make use of IE to obtain information from internet web, music download, etc

(1) Click  on desktop to open Web Browser.

(2) Enter web address  for the website you wish to browse.



(3) To close Internet Explorer select the File menu and choose the Close option, or press (Alt+F4), or click .

(4) To save the current Web Site page to disk select the File menu and choose the Save page option. By default the files will be saved to NAND Flash directory.

**Please Note: This version of Internet Explorer has limited support for JavaScript and supports Adobe Flash Movies up to version 7.**

## 2. Core Player

Double click the "Core Player" icon on desktop and it will open as shown below:



The Menu Bar which has the File, View, Play and Tools option can be accessed by clicking the Arrow indicated.

From the File menu normal multimedia files can be opened for viewing.

In the bottom right hand corner is a YouTube link. Clicking on this will make Core Player connect to YouTube. **Note:** You must be connected to the Internet for this to work.

Once connected to YouTube a number of links will appear on the left hand side of the screen.

Clicking on these links will bring up a list of videos which are on listed within YouTube in these categories.

You can also use the search box at the bottom of the screen to search for any specific key words.



In the example to the left the keyword used for a search has been Minibook, which has listed two videos which have this keyword.

By clicking on a video you can play it within Core Player as shown below.

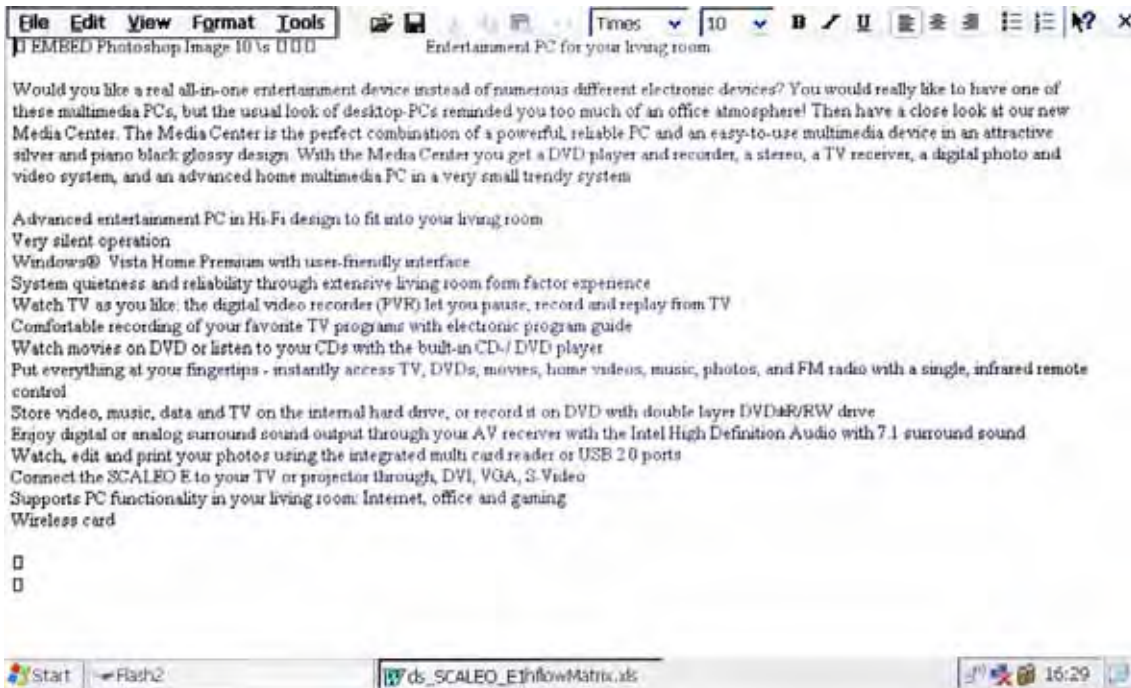
The video is controlled using standard Play, Fast Forward, Rewind and Stop icons.

To return to the list of available videos click the Green back arrow in the top left hand corner of the screen.



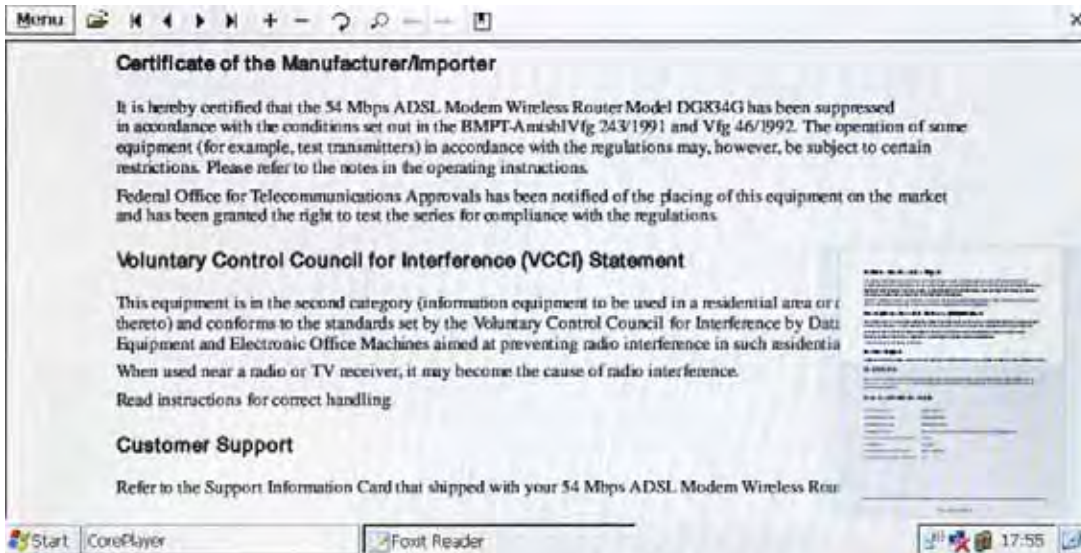
### 3. Word Processing – WordPad

Double click the “Microsoft WordPad” icon on desktop and it will open as shown below:



### 4. PDF Viewer - Foxit Reader Pro

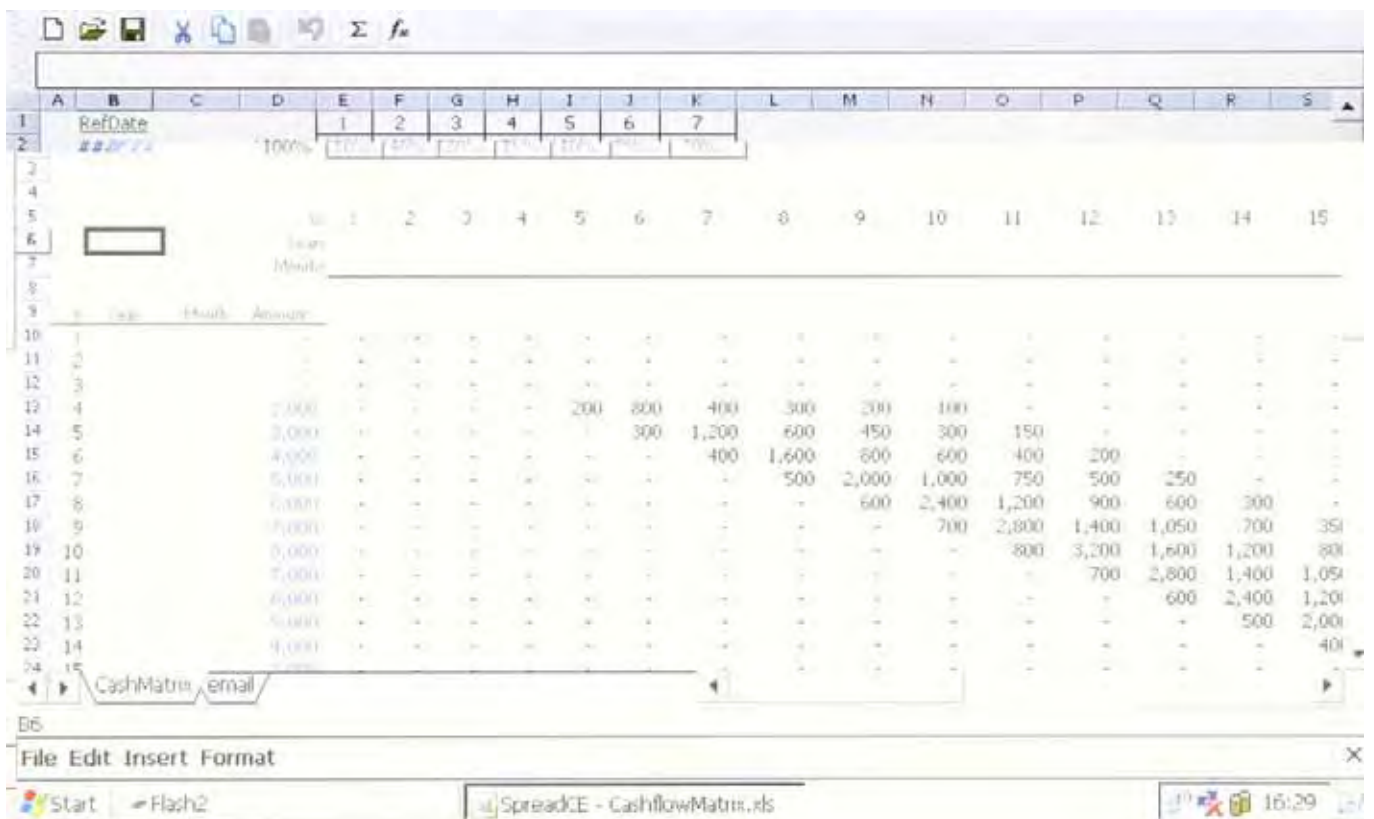
(1). Double click the “Foxit reader Pro” icon to open the application as shown below:





## 5. Spreadsheet - SpreadCE

Double click the "SpreadCE" icon on desktop, it will open as shown below:



## 6. Windows Messenger - MSN

Double click the "Messenger" icon to open the application as shown below:



## 7. Multimedia

There are two Multimedia Players on the Minibook, Microsoft Media Player and Core Codec Core Player, both supporting many different Media File Formats, both music and video such as mp3, wma, avi and mp4.

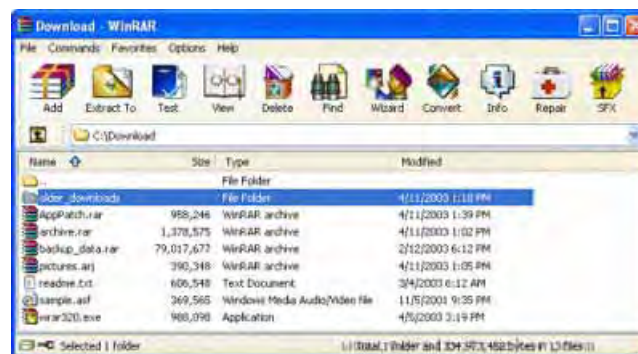
Double click the "Media Player" icon to open the media player as shown below:



Files can be opened by clicking (File -> Open -> Browse – select the file you want), or double click the file to be played when viewing it within Windows Explorer.

## 8. File Compression - PocketRAR

PocketRAR is a utility for creating, managing and opening of compressed files, it can support RAR and ZIP format compressed files. Double click the "PocketRAR" icon to open the application as shown below:



## 9. Games

Solitaire and Freecell are both provided on the Minibook and can be found in the Programs listing on the Start button.

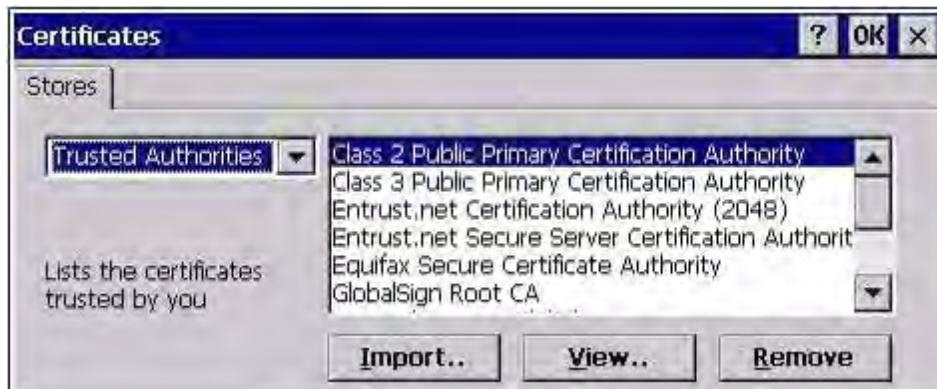


## 9. System Settings

System Settings allow you to make changes to many of the systems settings like system clock, date, sound, security and power settings. All the possible settings are described below.

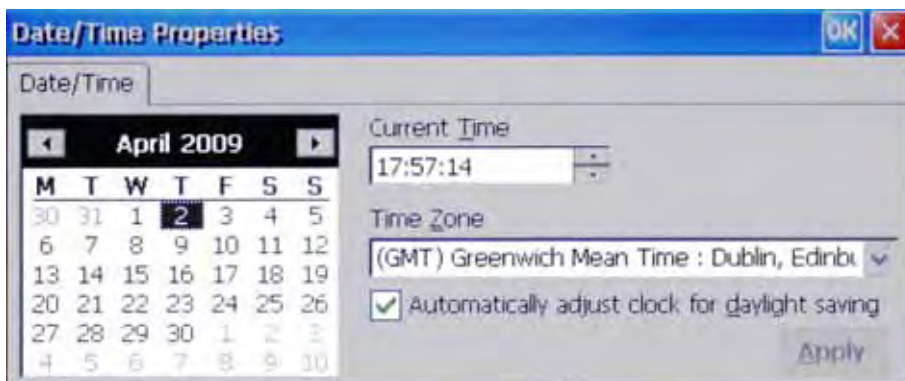
### 1. Certificates

Certificates are used to create trusted relationships between the Minibook and other Servers. To review and modify the system device certificates, click the Start button, click "Settings" and then click "Control Panel", finally select "Certificates". The Certificates window will appear as shown below:



### 2. Time Setting

To modify the Date, Time, and Regional time zone information, double click clock in the bottom right hand corner of the Menu bar. The Date/Time Properties window will appear as shown below:



### 3. Keyboard

To change the Keyboard repeat rate and delay, click the Start button, click "Settings" and then click "Control Panel", finally select "Keyboard". The Keyboard Properties window will appear as shown below:



## 4. Display

To change the wallpaper background, default appearance and Backlight settings, move the pointer on to some empty space on the desktop background and press the right button and select properties, The Display Properties window will appear as shown below:



The background wallpaper can be changed by selecting a different image from the pull down image list or by clicking the Browse button and selecting an image file to use. Appearance and Backlight level can also be set from the relevant tabs within the Display Properties window.

Please note that the wallpaper picture should be stored on the "NAND Flash" drive for the setting to be retained after the Minibook has been shut down.

## 5. Internet Options

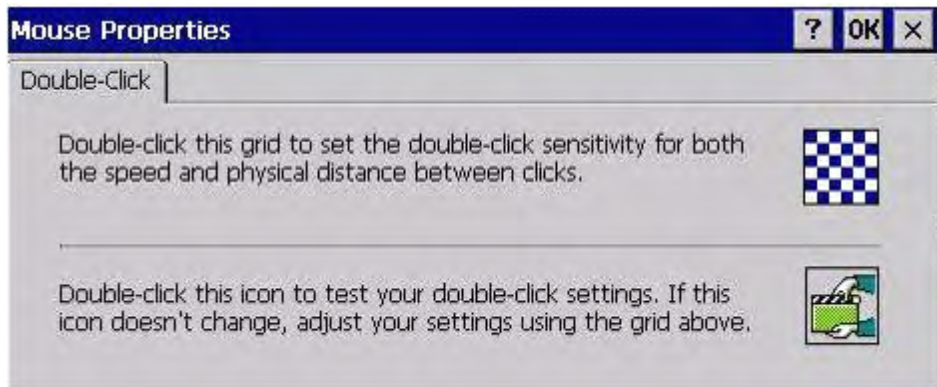
All the options for Internet Explorer can be managed within Internet Options, including the default Start Page, Search Page, Security and Privacy Settings as well as Popup blocking.

Click the Start button, click "Settings" and then click "Control Panel", finally select "Internet Options". The Internet Options window will appear as shown below:



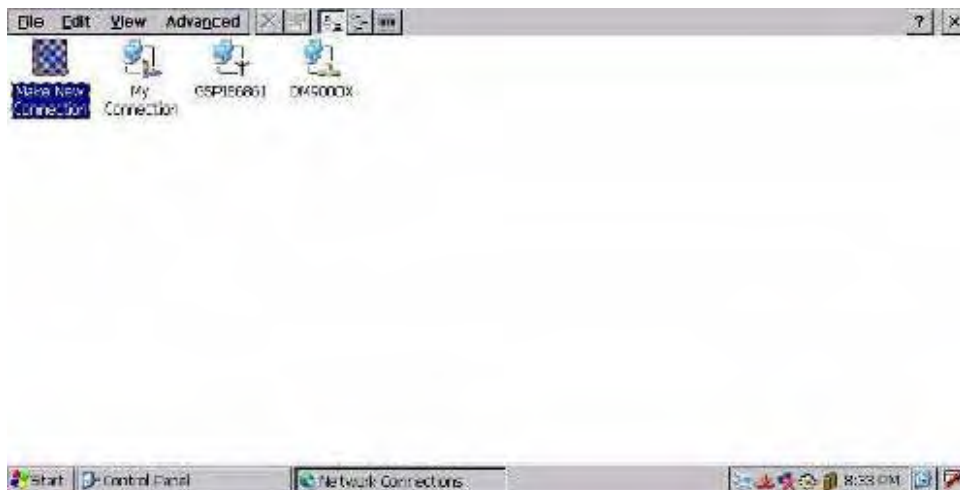
## 6. Mouse

To change the mouse double click sensitivity, click the Start button, click "Settings" and then click "Control Panel", finally select "Mouse". The Mouse Properties window will appear as shown below:



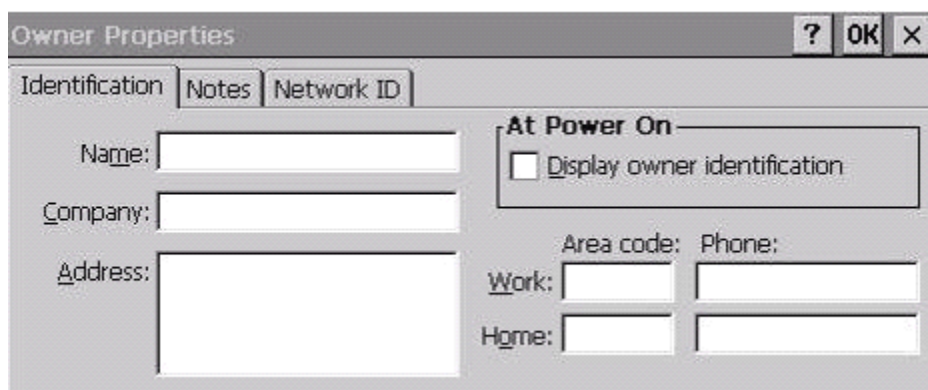
## 7. Network Connections

Click the Start button, click "Settings" and then click "Network and Dial-up Connections". The Network and Dial-up Connections window will appear as shown below:



## 8. Owner Properties

To modify your identity details which are stored on the Minibook, including name, company and address, etc. Click the Start button, click "Settings" and then click "Control Panel", finally select "Owner". The Owner Properties window will appear as shown below:



## 9. Password Setting

To change the password setting, which allows you to protect the Minibook. Click the Start button, click "Settings" and then click "Control Panel", finally select "Password". The Password Properties window will appear as shown below:



After setting the password protection, the password will need to be entered the next time the Minibook is turned on.

## 10. Power Management

To view the battery status and change power schemes to allow the Minibook to run for longer when running on battery power. Click the Start button, click "Settings" and then click "Control Panel", finally select "Power". The Power Properties window will appear as shown below:



Please note that batteries status will only be shown when the Minibook isn't being charged.

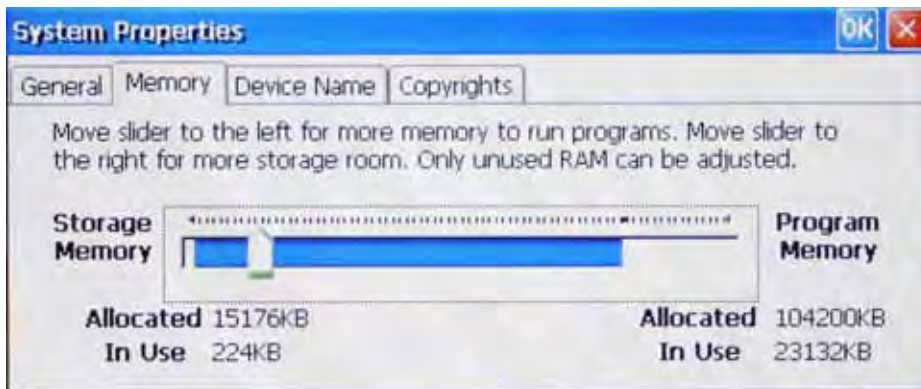
## 11. System

To check the systems information and device name click the Start button, click "Settings" and then click "Control Panel", finally select "System".

## 12. Memory Management

Some of the systems memory on your Minibook is allocated between storage memory and program memory. You can specify how much of the total memory is used for storage and how much is used for running programs. If you notice that your Minibook is running slowly or that your programs do not run as expected, try increasing program memory. If you need more memory for files and documents, increase storage memory.

To adjust memory allocation click the Start button, click "Settings" and then click "Control Panel", finally select "System". The System window will appear as shown below:

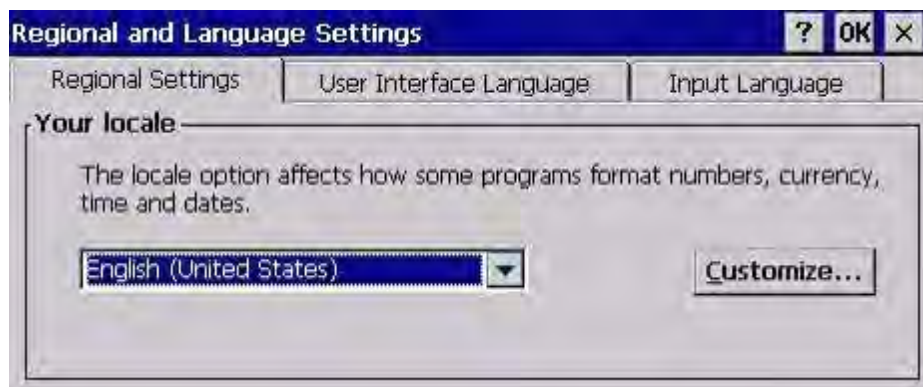


Click on the Memory tab, move the slider to the left to increase program memory, or move the slider to the right to increase storage memory.

### 13. Regional Settings

The display format of number, currency, date and time, as well as the default setting for "User Interface Language" and "Input Language" options can all be changed within Regional and Language Settings.

Click the Start button, click "Settings" and then click "Control Panel", finally select "Regional Settings". The Regional and Language Settings window will appear as shown below:



### 14. Volume and Sound

Enabling sound and changing volume settings.

Click the Start button, click "Settings" and then click "Control Panel", finally select "Volume & Sounds". The Volume & Sounds Properties window will appear as shown below:



## 10. Troubleshooting

If you have a specific problem, review the information below to see if you can quickly find the answer. Or visit the Support pages on our Web site at [www.cnmlifestyle.com](http://www.cnmlifestyle.com) for current information about common issues.

Problem	Diagnosis/Remedy
Minibook does not turn on when connected to AC power.	Minibook is locked up. Connect the Minibook to external power, and perform a reset. (See the Resetting section in this chapter).
Minibook does not turn on when <u>not</u> connected to AC power.	Battery power is too low to run device. Connect to AC power, and then turn on your Minibook. (Charge the battery regularly to avoid running out of battery power.) For information on charging the battery and checking battery status, refer to the Battery Management section in chapter 6.
Battery runs out of power very quickly.	You may be using your Minibook in ways that drain the batteries quickly. See the Battery Management section in chapter 6. Note: Leaving Wireless turned on when not in use will drain the battery much faster than if it is turned off.
Minibook automatically shuts down.	Main battery is too low to run device. When a critically low-battery condition is encountered, the Minibook initiates a safety shutdown. Connect to AC power and charge the battery. or The Minibook is locked up. Connect the Minibook to external power, and perform a reset. See the System Reset section in chapter 9.
Minibook locks up when running applications.	Program memory is low. For detailed instructions on making more program memory available, see the Memory Management section in chapter 7. or The Minibook is locked up. Connect the Minibook to external power, and perform a reset. See the System Reset section in chapter 9.
Minibook runs very slowly.	There is insufficient program memory or the memory needs to be refreshed. For detailed instructions on making more memory available, see the Memory Management section in chapter 7.
Insufficient memory error occurs when running an application.	Minibook has run out of program memory for the application. For detailed instructions on making more program memory available, see the Memory Management section in chapter 7.
Minibook does not detect an SD Card.	The SD Card may not be inserted correctly, see How to use SD Cards in chapter 7.
Minibook will not establish a connection with a desktop PC.	The USB cable is not connected properly to the PC or the Minibook, or communications are not configured correctly. Reconnect the cable correctly or see Microsoft ActiveSync Help for more information. or The USB connection is not enabled in ActiveSync on your desktop PC. In ActiveSync, on the File menu, click Connection Settings, and then select the Allow USB connection with this desktop computer check box.



# Warranty Information

## One year limited hardware warranty

This product is covered by a one year warranty against defects in material and workmanship. This warranty excludes the battery that is covered by a six months warranty.

For all warranty issues please contact your place of purchase.

## Limitation of warranty

The above warranty shall not apply to defects resulting from:

misuse; unauthorized modification; opening for any reason; operation or storage outside the environmental specifications for the product; in-transit damage; improper maintenance; physical damage to the unit, such as a cracked or broken screen or defect resulting from use software, accessories, media, supplies, consumables, or such items not designed for use with the product.

CnM Lifestyle makes no other express warranty, whether written or oral, with respect to this product. Any implied warranty of merchantability or fitness for a particular purpose is limited to the one-year duration of this written warranty.

Some states, provinces, or countries do not allow limitations on how long an implied warranty lasts, so the above limitation or exclusion may not apply to you.

This warranty gives your specific legal rights, and you may also have other rights that vary from state to state, province to province, or country to country.

### FCC ID: XXRKSUM070102

This device complies with Part 15 of the FCC Rules. Operation is subject to the following two conditions: (1) this device may not cause harmful interference, and (2) this device must accept any interference received, including interference that may cause undesired operation.

changes or modifications not expressly approved by the party responsible for compliance could void the user's authority to operate the equipment.

NOTE: This equipment has been tested and found to comply with the limits for a Class B digital device, pursuant to Part 15 of the FCC Rules. These limits are designed to provide reasonable protection against harmful interference in a residential installation. This equipment generates, uses and can radiate radio frequency energy and, if not installed and used in accordance with the instructions, may cause harmful interference to radio communications. However, there is no guarantee that interference will not occur in a particular installation. If this equipment does cause harmful interference to radio or television reception, which can be determined by turning the equipment off and on, the user is encouraged to try to correct the interference by one or more of the following measures:

- Reorient or relocate the receiving antenna.
- Increase the separation between the equipment and receiver.
- Connect the equipment into an outlet on a circuit different from that to which the receiver is connected.
- Consult the dealer or an experienced radio/TV technician for help.

All information is subject to change without notice.

RF warning statement:

The device has been evaluated to meet general RF exposure requirement. The device can be used in portable exposure condition without restriction.