
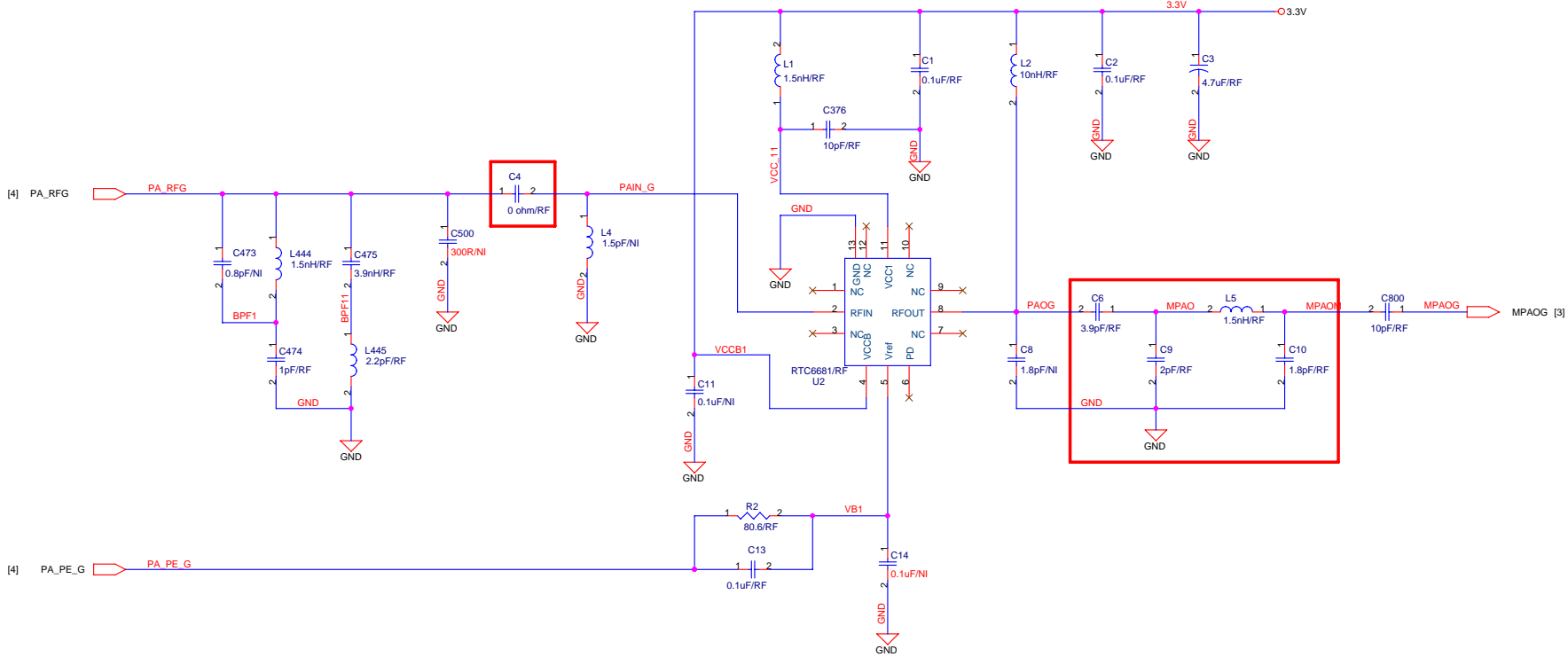



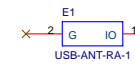
Filename:
PEN-RT3070-QFN-V32RW-EFUSE-090109.DSN

		RALINK TECHNOLOGY, CORP.	
		Title: 2.4G USB Card - RT3070	
Size	B	Document Number	Rev
		PEN-RT3070-QFN-V32RW-1X1.SCH	3.2
Date:	Friday, January 09, 2009	Sheet	1 of 6

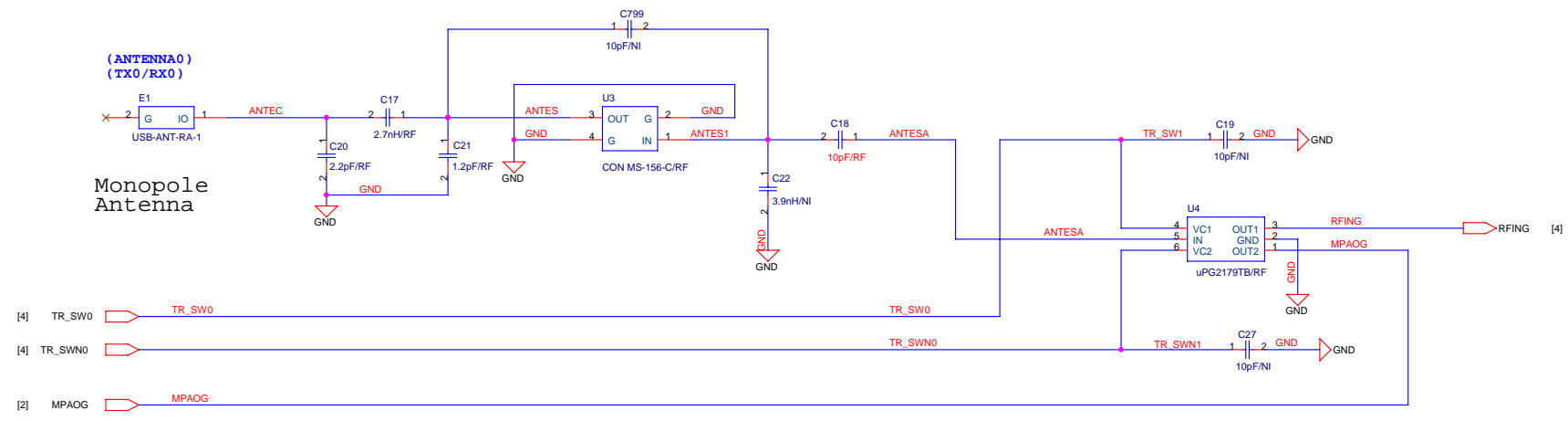


		RALINK TECHNOLOGY, CORP.	
		Title: 2.4GHz PA	
Size: B	Document Number: 1-PA-RTC6681.SCH		Rev: 3.2
Date: Friday, January 09, 2009	Sheet: 2	of: 6	

(ANTENNA0)
(TX0/RX0)

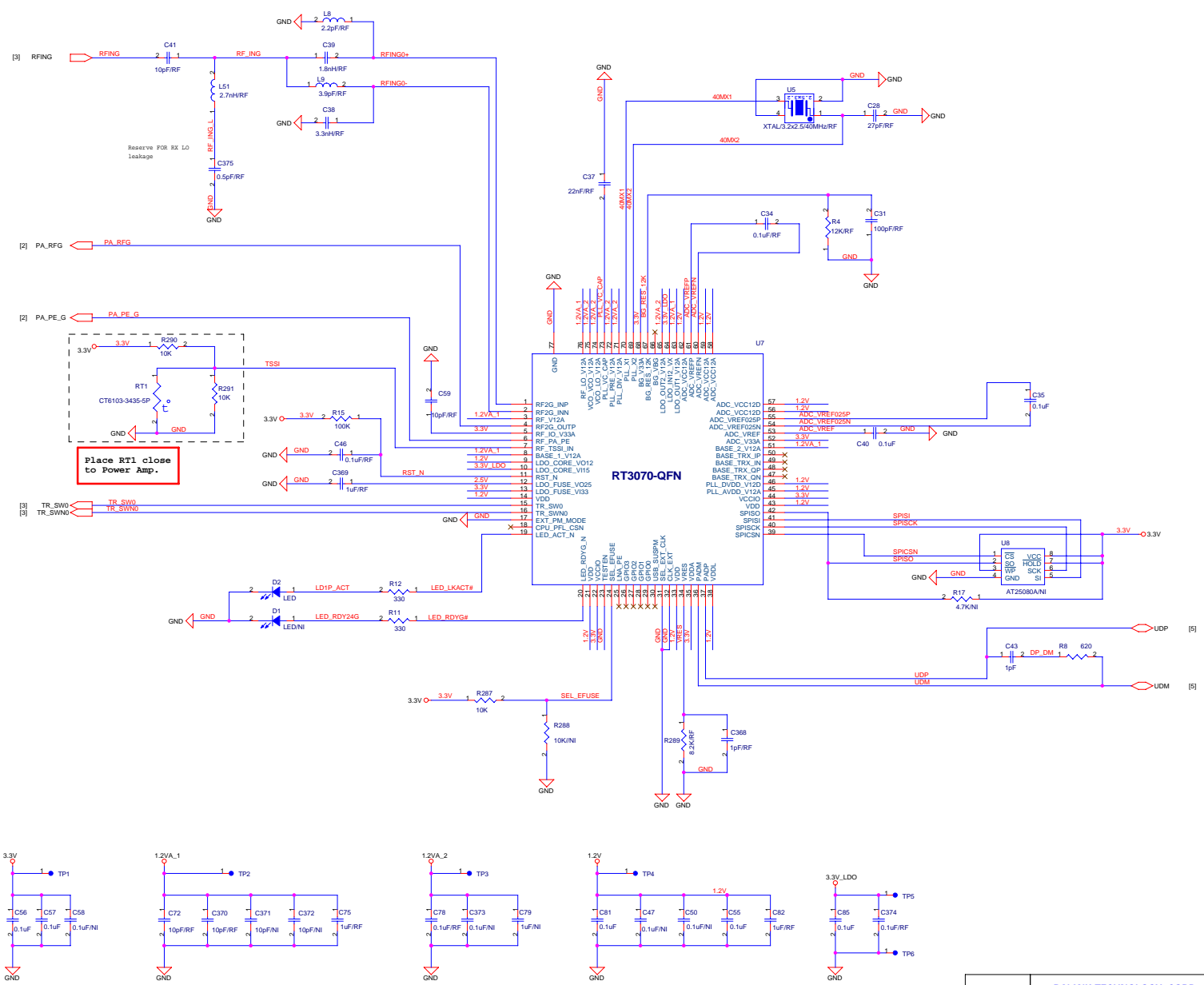


Monopole
Antenna

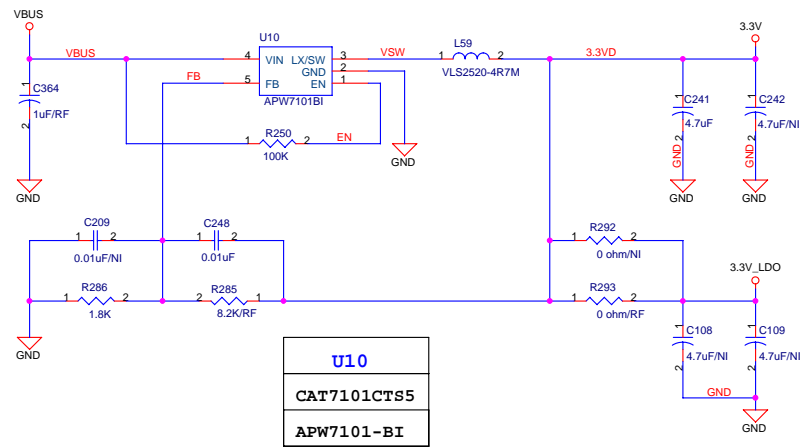


- [4] TR_SW0
- [4] TR_SWN0
- [2] MPAOG

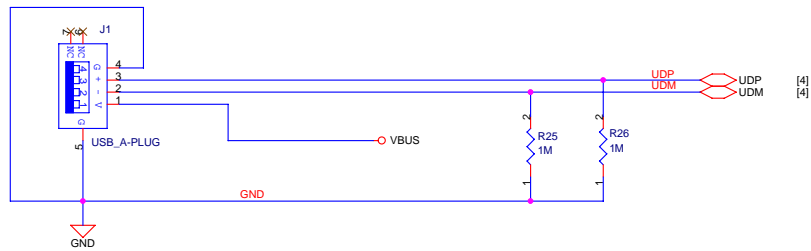
		RALINK TECHNOLOGY, CORP.	
		Title: Front-End	
Size: B	Document Number: 2-FrontEnd.SCH		Rev: 3.2
Date: Monday, October 06, 2008	Sheet: 1	of: 3	6




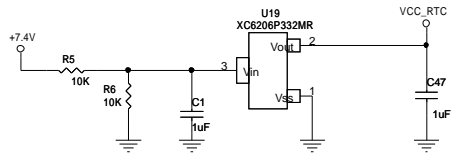
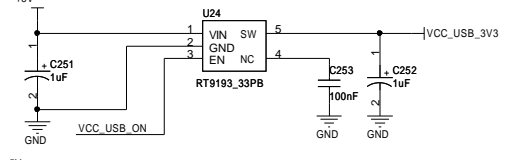
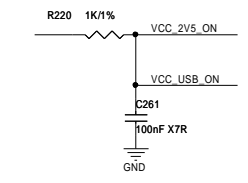
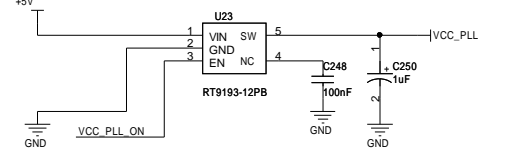
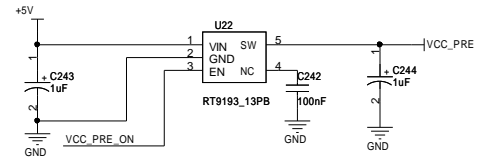
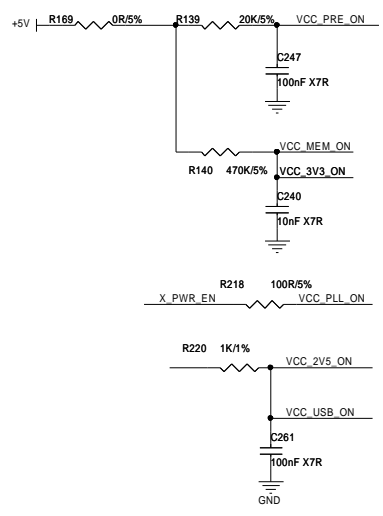
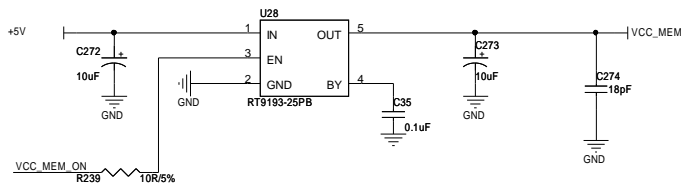
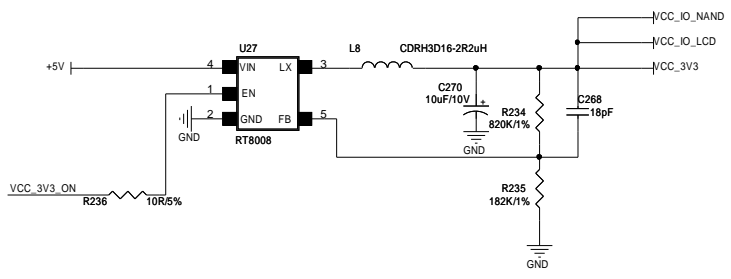
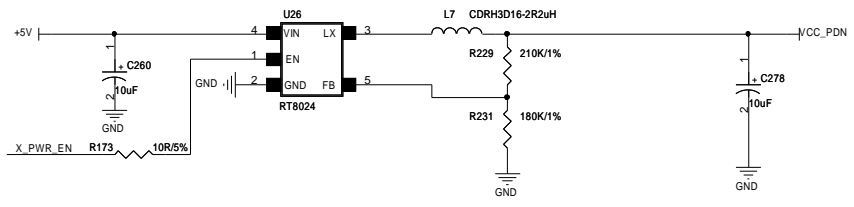
Ralink Technology, Corp.	
Ralink	
File	RT3070-WLAN
Size	Document Number
C	3-RT3070-WLAN.SCH
Date	Friday, January 09, 2009
Sheet	4 of 6
Rev	3.2

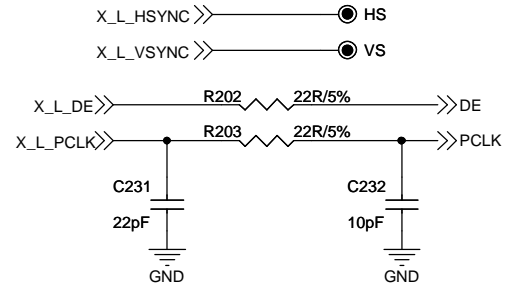
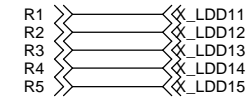
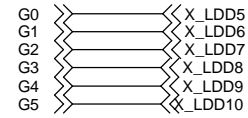
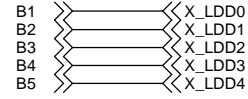
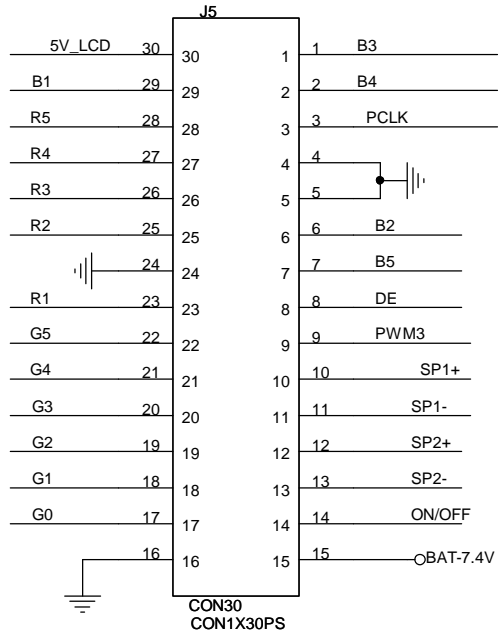


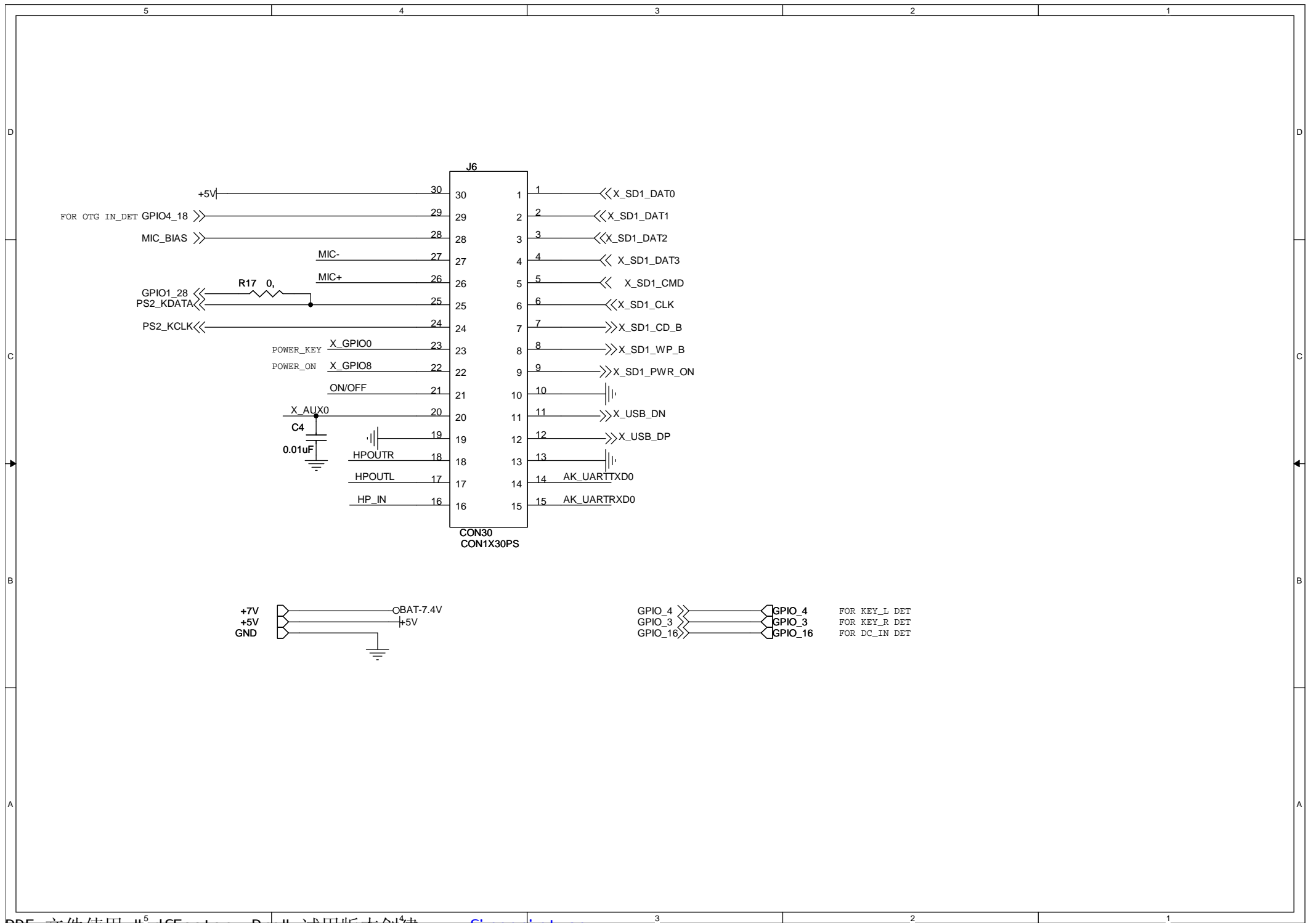
U10
CAT7101CTS5
APW7101-BI

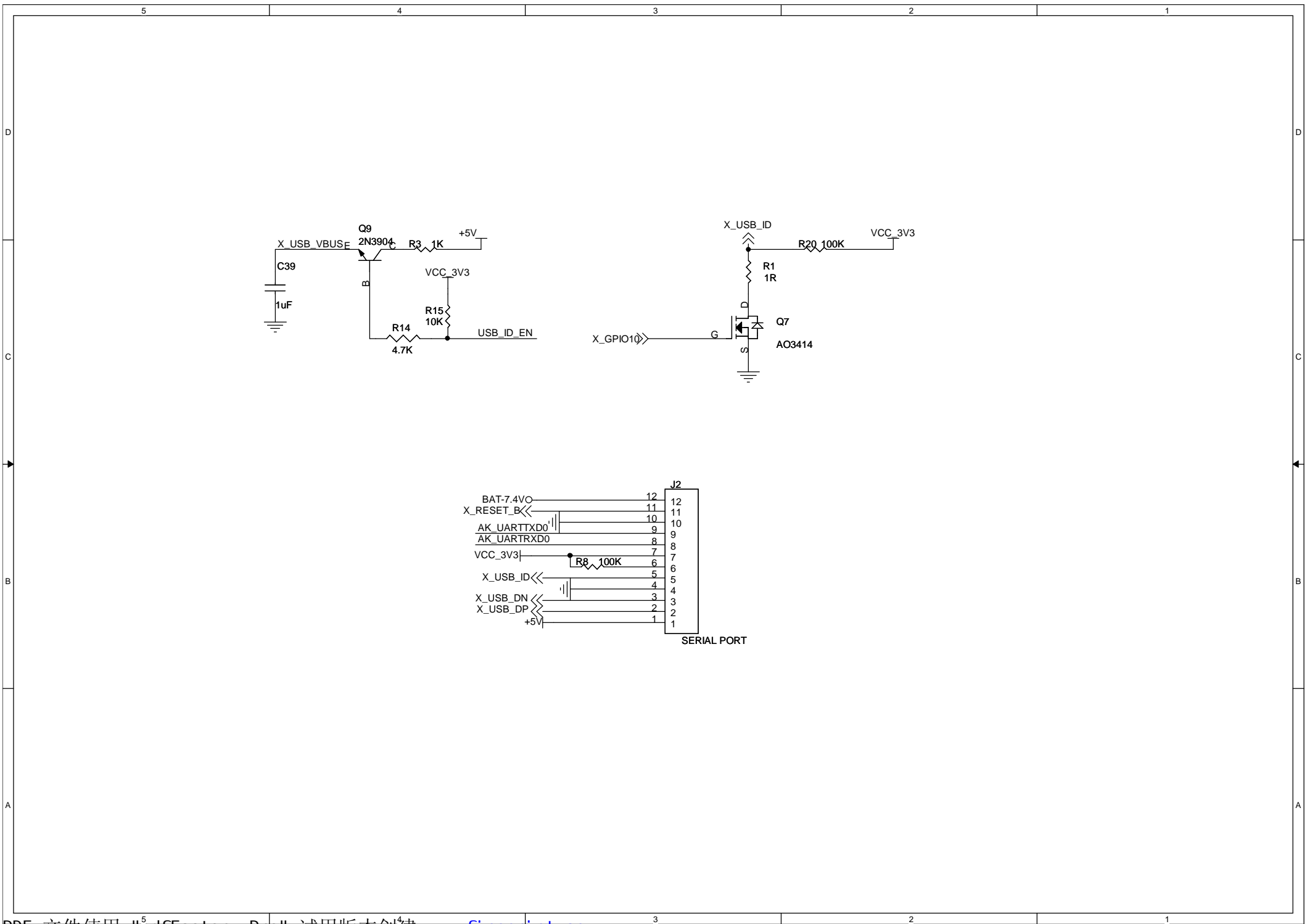


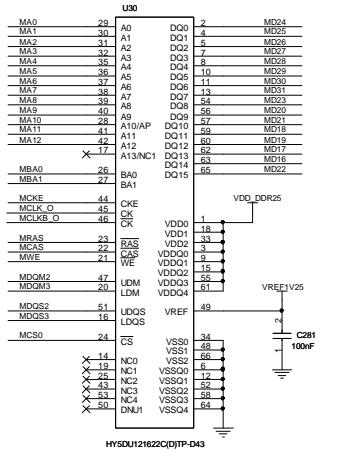
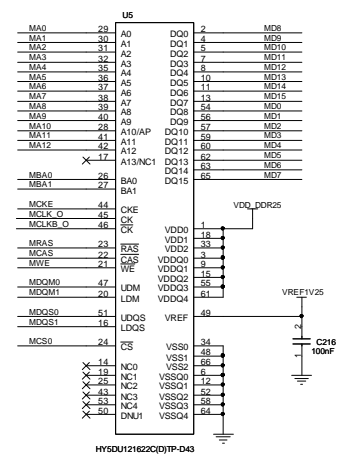
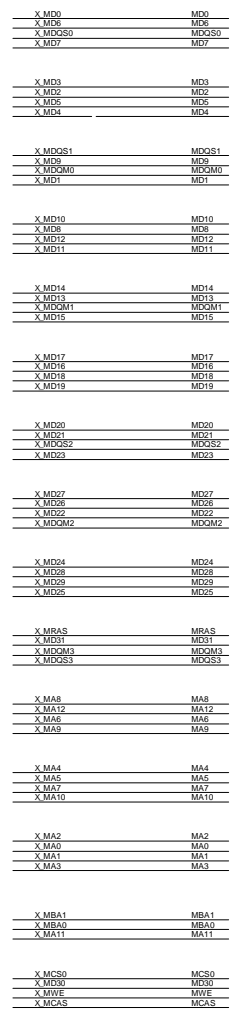
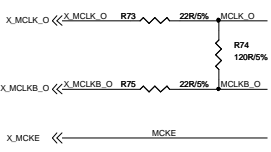
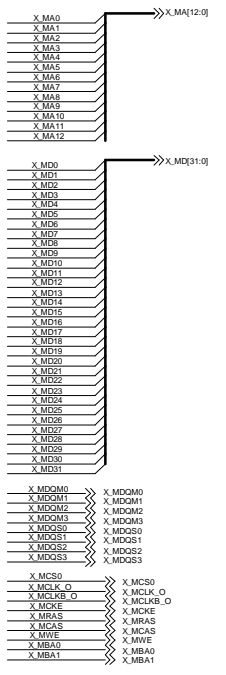
		RALINK TECHNOLOGY, CORP.	
		Title: PEN USB Interface and Power	
Size: B	Document Number: 4-USB-A.SCH		Rev: 3.2
Date: Monday, October 06, 2008	Sheet: 5	of: 6	



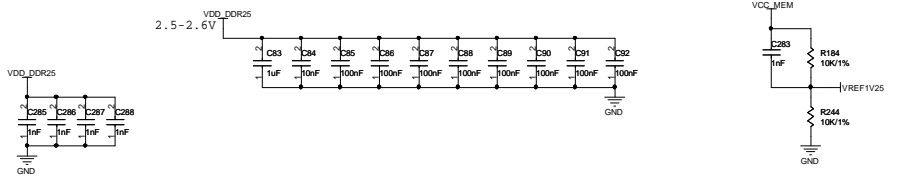




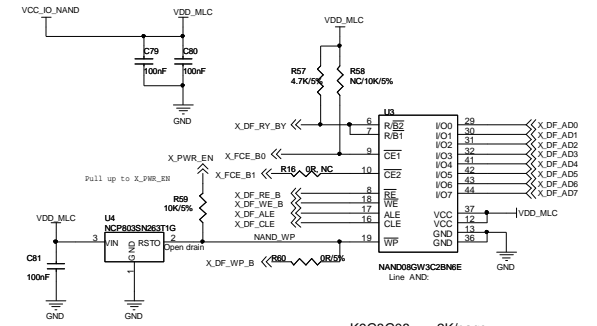




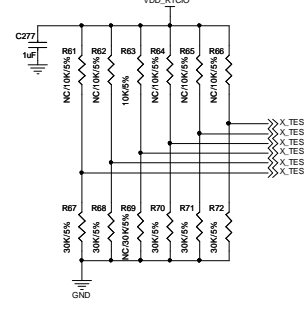
Default 64M byte
 Part number is: HY5DU12622C(D)TP-D43
 2.5V 200MHz normal DDR
 Change the pin sequence in order
 to easy layout's routing



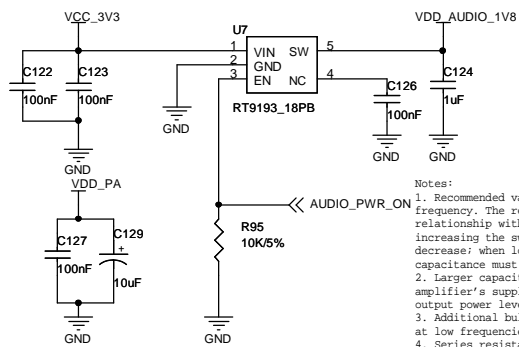
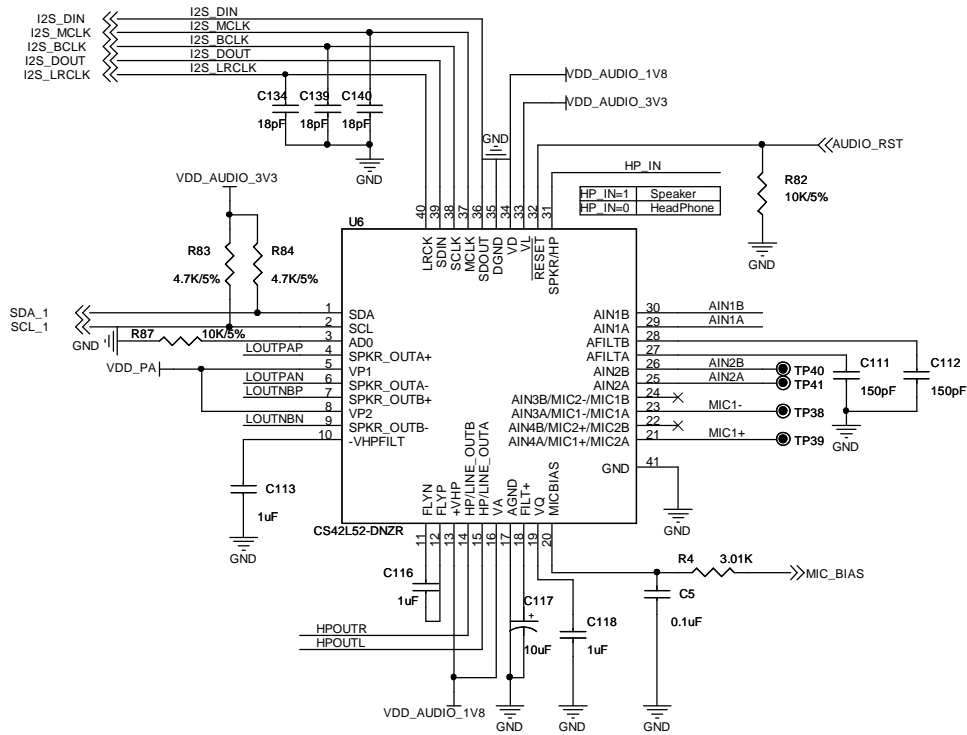
MLC Nand Flash boot Default



Boot Configure for three options



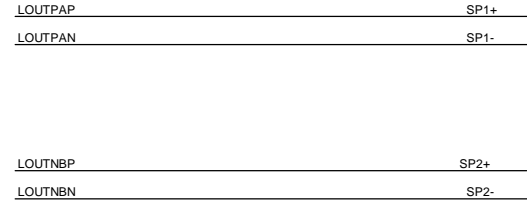
Boot configuration	X_TEST_MODE[5:0]
Boundary Scan	6b110000
SLC Nand Boot 2KB Page 8 Bit	6b000101
MLC Nand Boot 2KB Page 8 Bit	6b001000
INAND Boot	6b001100
EFuse	6b110010
MLC Nand Boot 4KB Page 8 Bit	6b001001



Notes:

1. Recommended values for the default charge pump switching frequency. The required capacitance follows an inverse relationship with the charge pump's switching frequency. When increasing the switching frequency, the capacitance may decrease; when lowering the switching frequency, the capacitance must increase.
2. Larger capacitance reduces the ripple on the internal amplifier's supply. This may reduce the distortion at higher output power levels.
3. Additional bulk capacitance may be added to improve PSRR at low frequencies.
4. Series resistance in the path of the power supplies must be avoided. Any voltage drop on VHP will directly impact the negative charge pump supply (-VHPFILT) and clip the audio output.

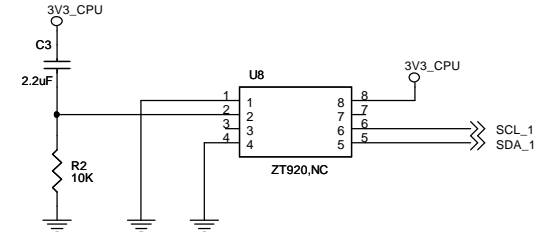
1W/8R Speaker

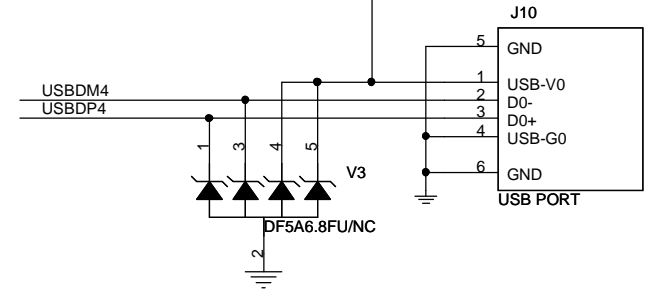
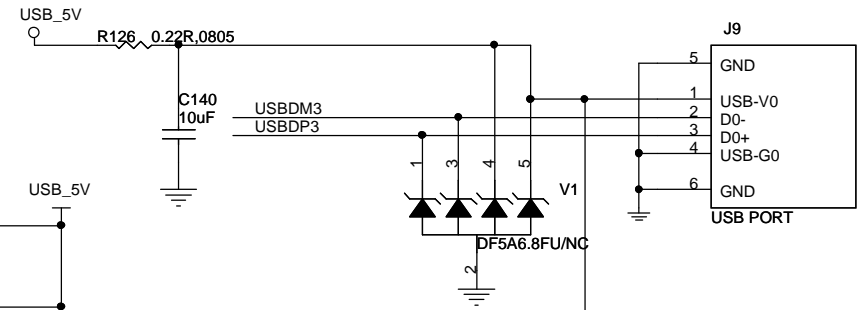
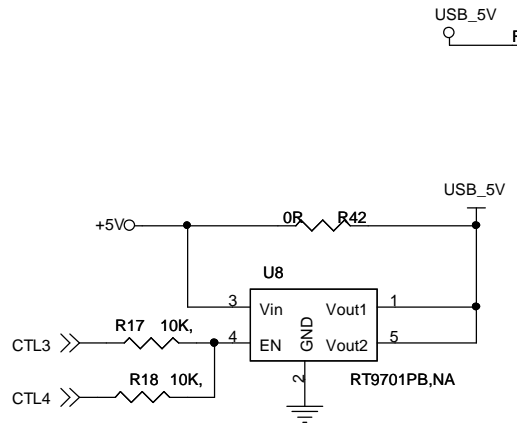
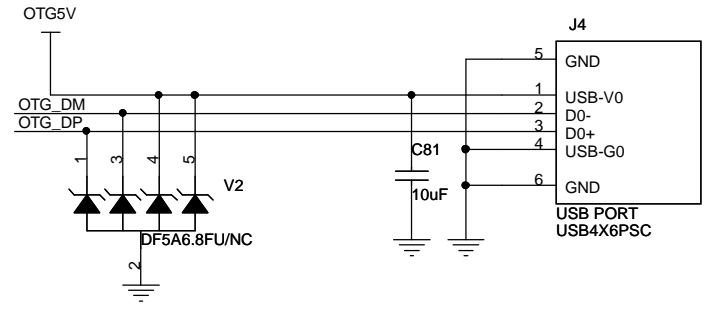
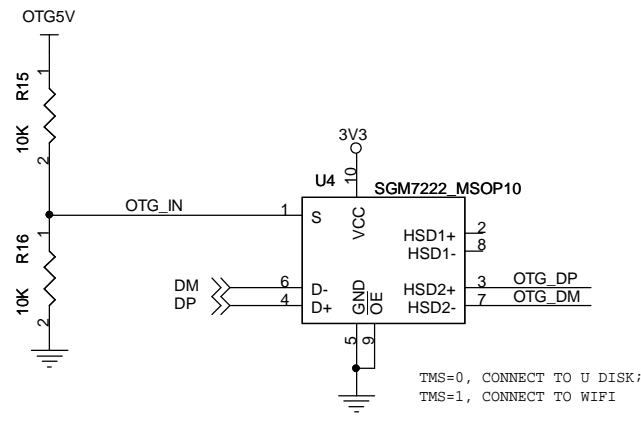


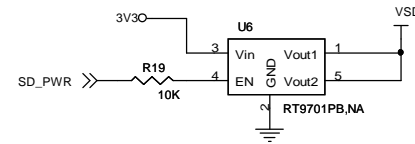
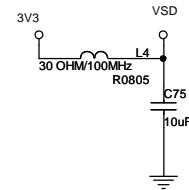
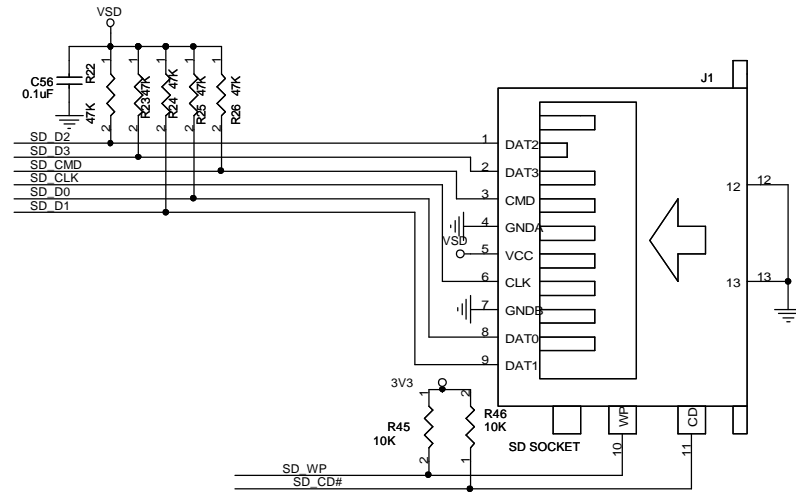
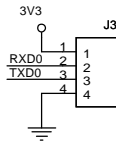
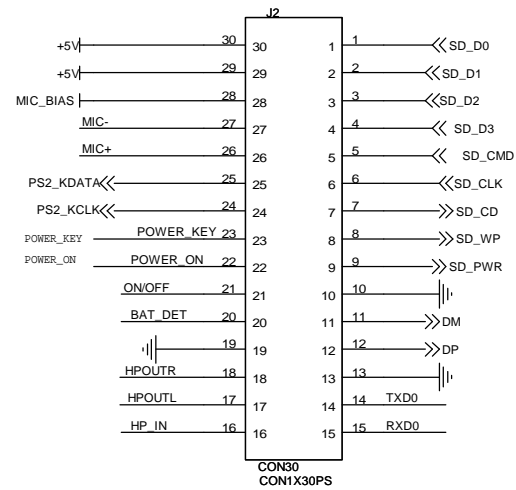
Suggestion add some ESD protect components.

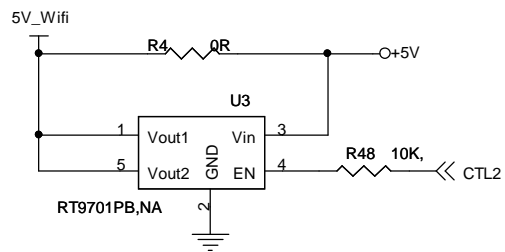
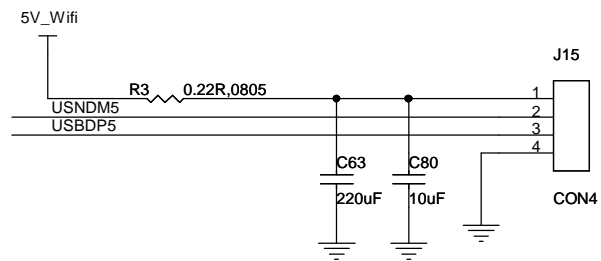
Suggestion add some ESD protect components.

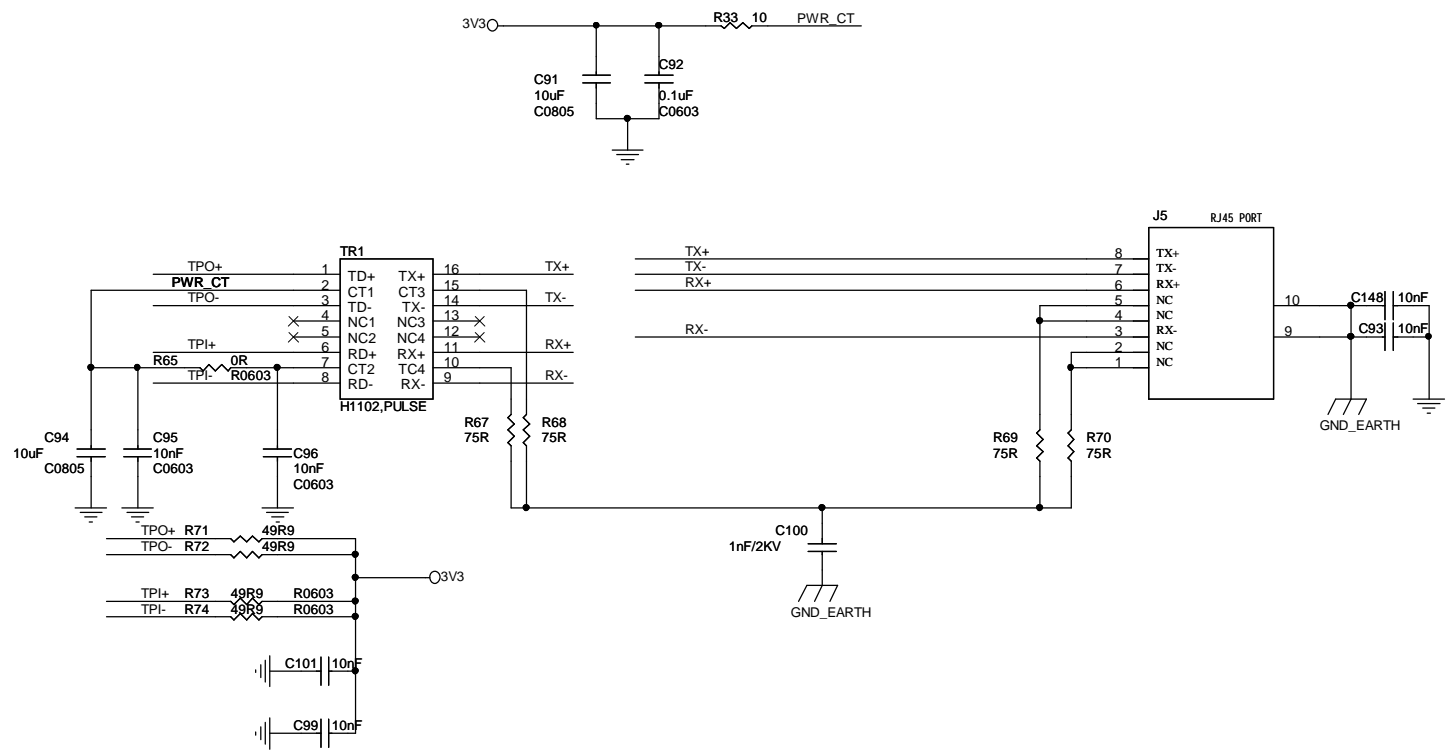
Earphone

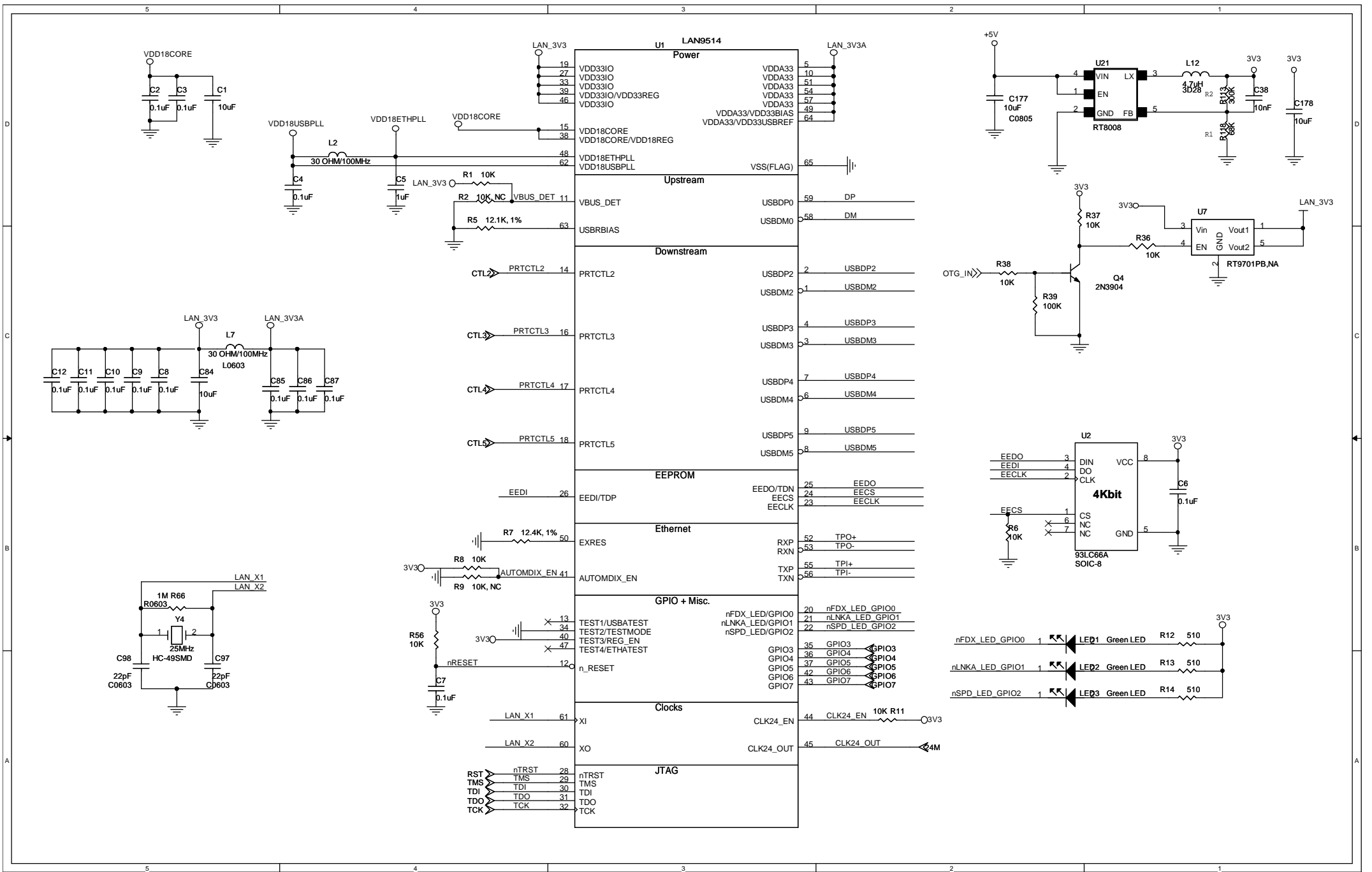


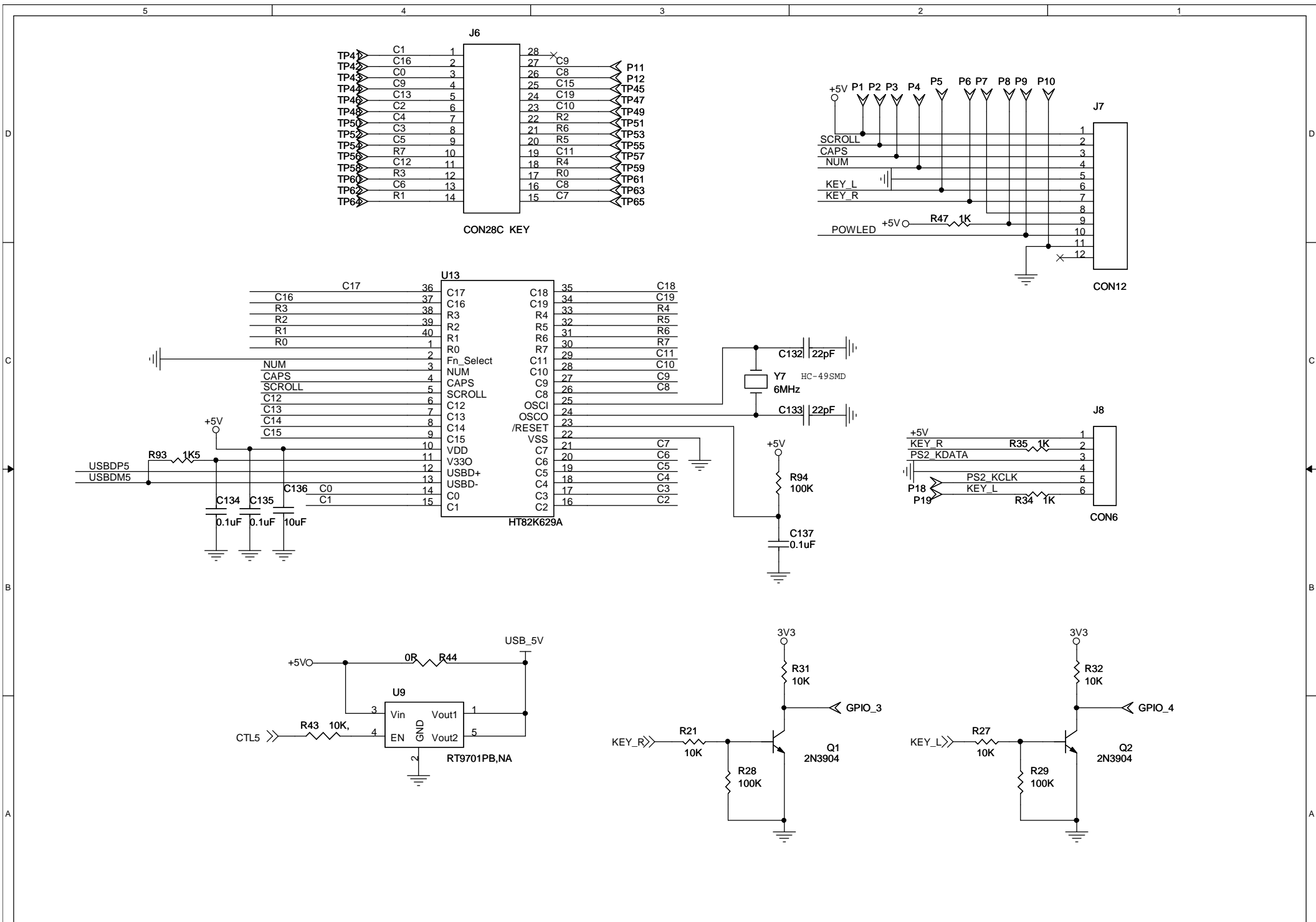


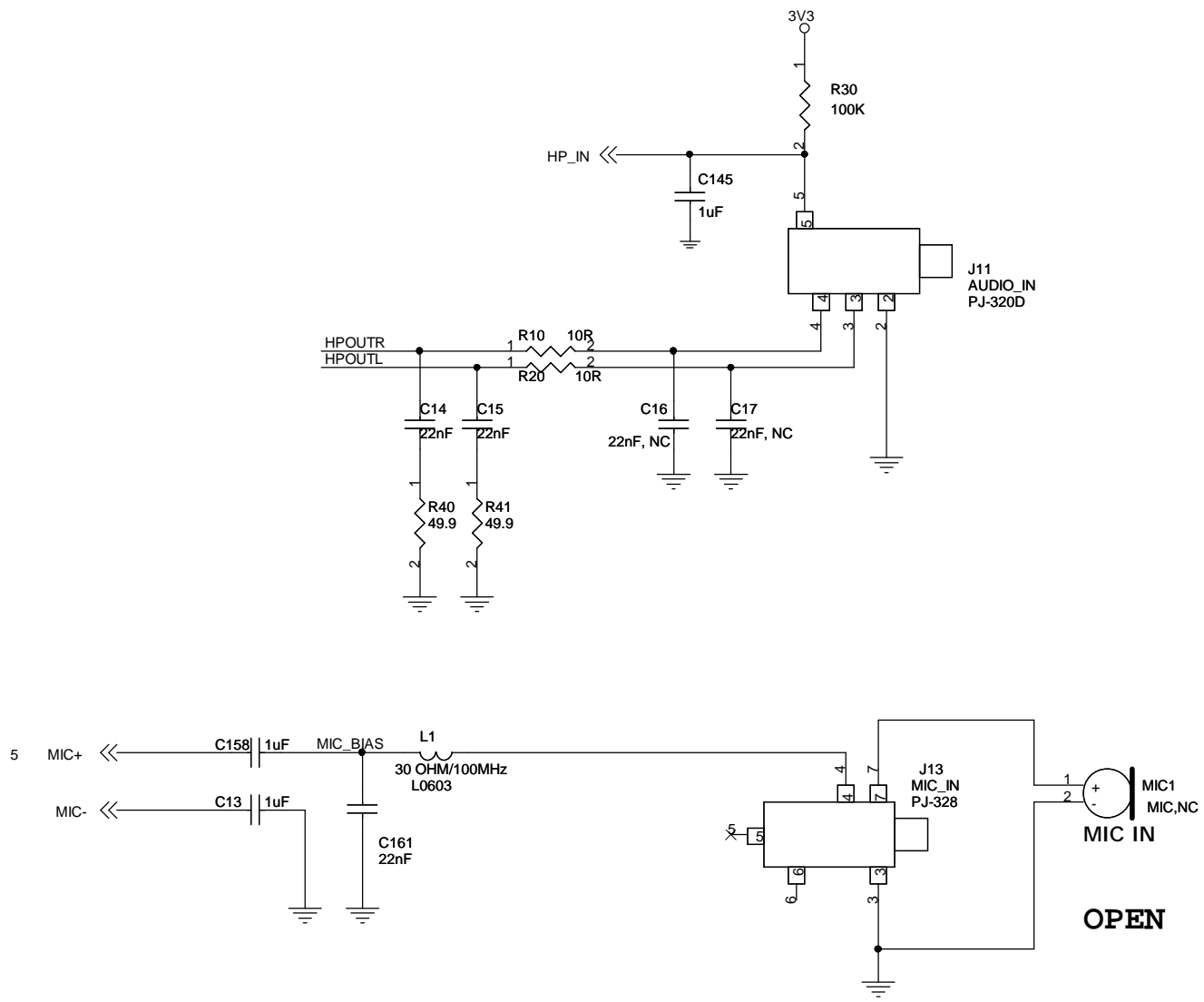


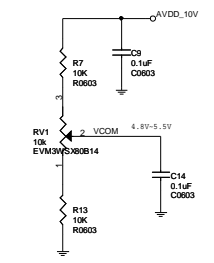
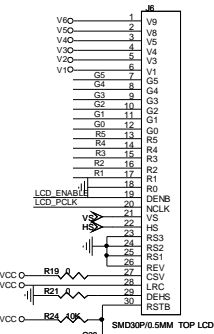
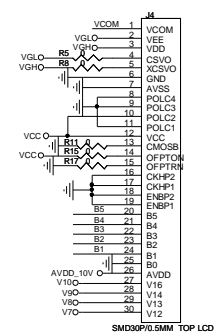
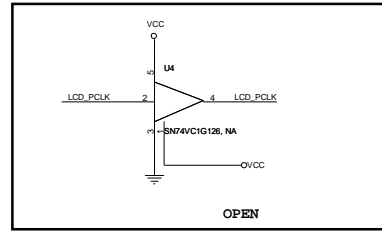
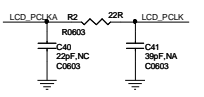
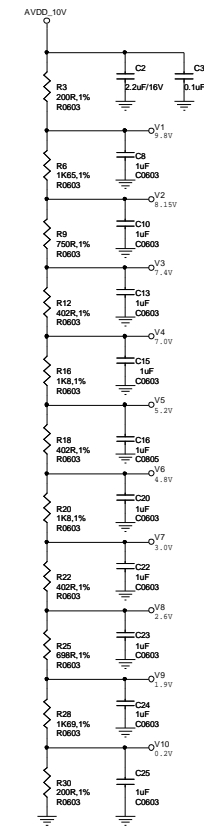
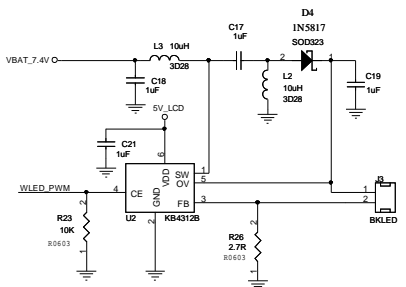
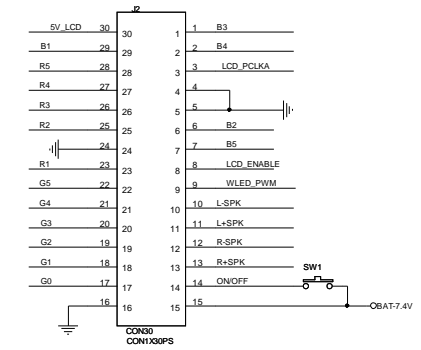
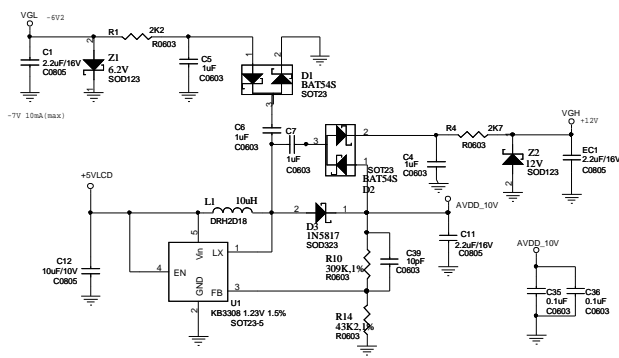
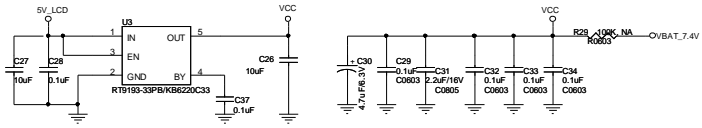












Title		
<Title>		
Size	Document Number	Rev
C	<Doc>	<Rev Code>
Date: Thursday, March 18, 2010 Sheet 1 of 1		