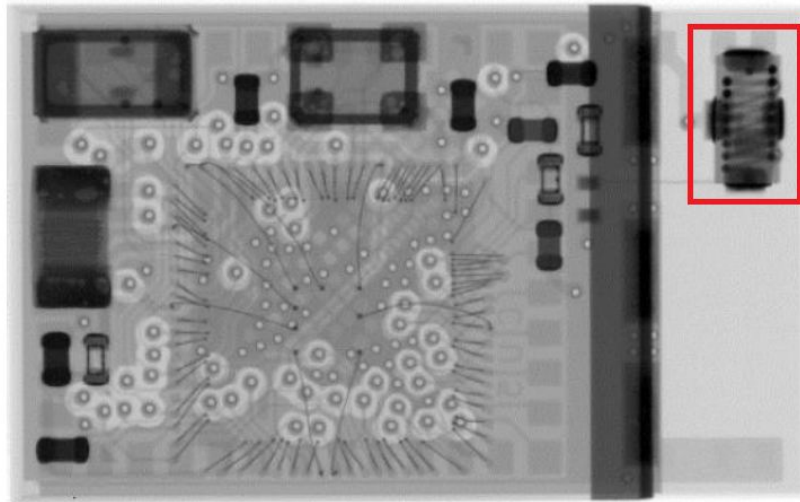


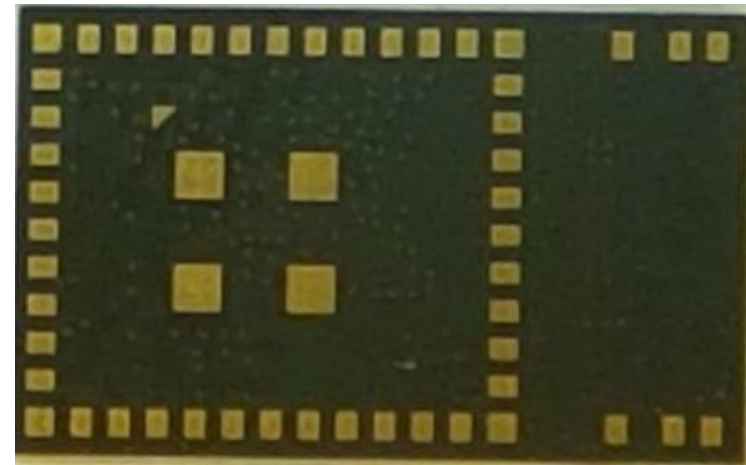


QN9080-001-M17 Internal X-Rays Photos

The SIP is a molded product we cannot have internal photo but X-Rays photo
2.4 GHz antenna



TOP



BOTTOM

FCC ID: XMQN9080M17

IC ID: 8764A-QN9080M17

The device is unquestionably too small for the FCC ID to be readable (smaller than 4-6 points) thus the FCC ID is placed in the user manual.