

Internal Photographs

SC2028 Hand-portable radio

Also applicable to FCC ID: XX6SC2028W and
IC: 8739A-SC2028

Original Instructions: ENGLISH
Document Number: CON-REP-00263
Issue: 1

Copyright

© Sepura Limited. 2002– 2021 All rights reserved.

No part of the information contained herein and the other referred documents may be copied, distributed or transmitted by any means to any other party without prior written permission of Sepura Limited. The distribution of this document may require a Non-Disclosure Agreement (NDA) between Sepura Limited. and their agents or customers. This document, the referred documents and the described product are considered protected by copyright according to the applicable laws.

Disclaimer

Although every reasonable effort has been made to ensure the accuracy of the information contained herein and any other referred document, this should not be construed as a commitment on the part of Sepura Limited. and the liability of Sepura Limited. for any errors and omissions shall be limited to the correction of such errors and omissions. Sepura Limited. welcomes any comment and feedback as a way to improve any delivered documentation. The information contained herein has been prepared for the use of appropriately trained personnel, and it is intended for the purpose of the agreement under which the information is submitted. Any party using or relying upon this information assumes full responsibility for such use and in no event shall Sepura Limited. be liable to anyone for especial, collateral, incidental, or consequential damages in connection with or arising out of the use of this information. The information or statements given in these documents regarding the suitability, capacity or performance of the mentioned hardware or software products cannot be considered binding but shall be defined in the agreement made between Sepura Limited. and the customer.

Trademarks

The Sepura logo and some product branding logos and names are registered trademarks of Sepura Limited. All other trademarks appearing in this document are the property of their respective owners.

Contact Details

Sepura Limited.
9000 Cambridge Research Park
Beach Drive, Waterbeach
Cambridge, CB25 9TL
United Kingdom
www.sepura.com

Figures

Figure 1.	SC2128 With Front Cover Removed.....	4
Figure 2.	SC2128 Main PCB Front View	4
Figure 3.	SC2128 Main PCB Rear View.....	5
Figure 4.	SC2128 Main PCB Rear View With GPS Module Removed	5
Figure 5.	SC2128 GPS Module Rear View.....	6
Figure 6.	SC2128 GPS Module Front View	6
Figure 7.	SC2128 Main PCB Front View With Cans Removed	7
Figure 8.	SC2128 Main PCB Rear View With Cans Removed.....	7
Figure 9.	SC2128 GPS Module Rear View With Can Removed	8
Figure 10.	SC2128 GPS Module Front View With Can Removed.....	8

Figure 1. SC2028 With Bluetooth Fitted



Figure 2. SC2028 With Bluetooth Removed

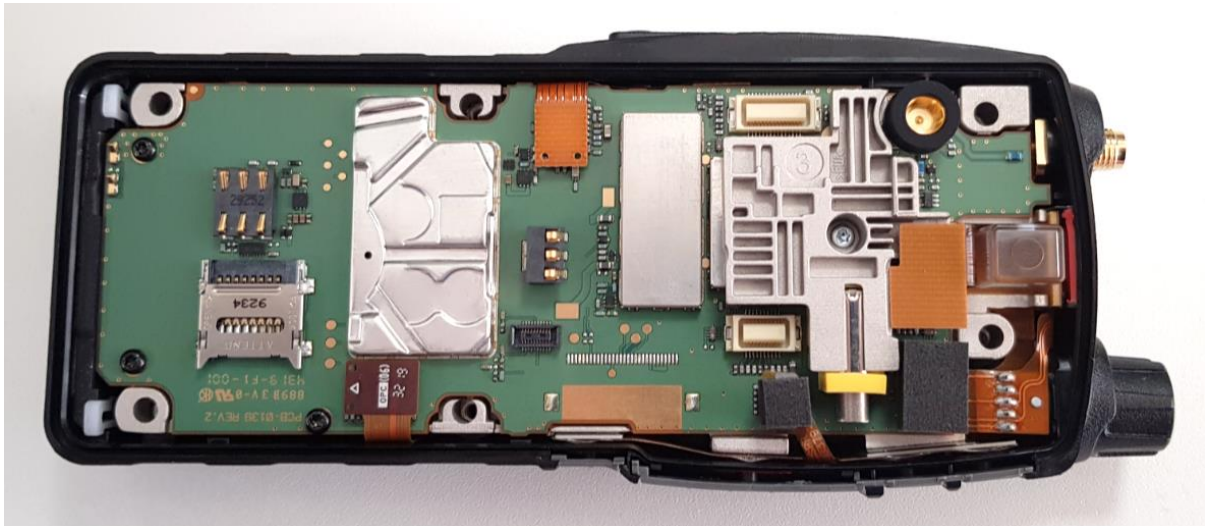


Figure 3. SC2028 Main Rear Cover

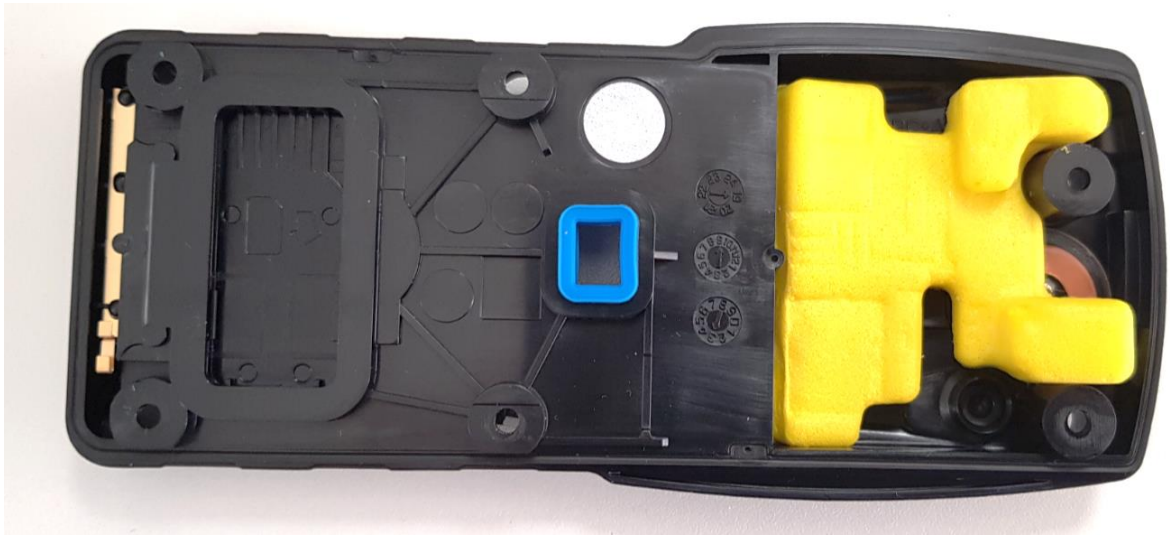


Figure 4. SC2028 Main PCB with Heatsink Removed



Figure 5. SC2028 Main PCB Top View

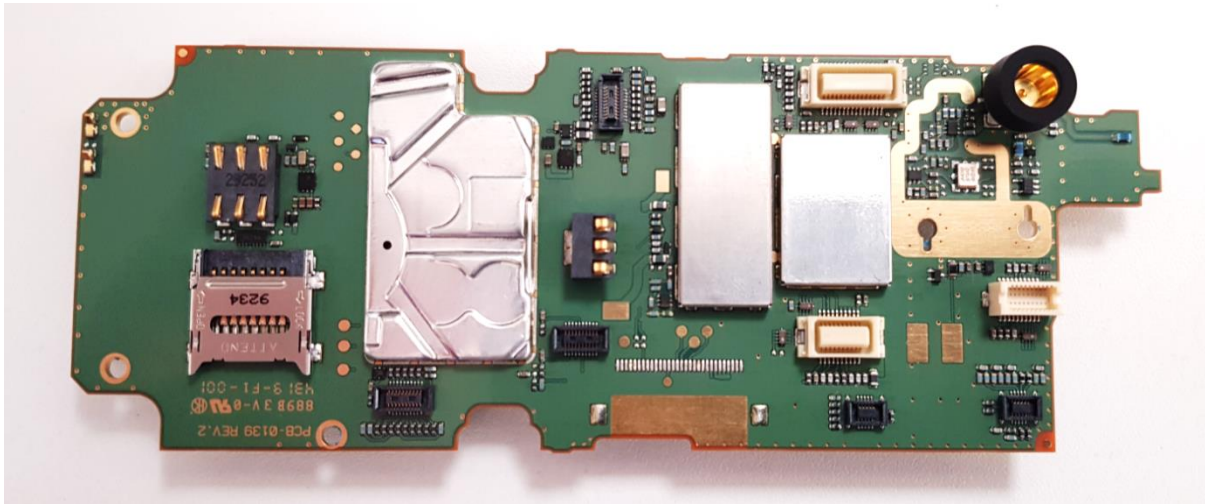


Figure 6. SC2028 Main PCB Bottom View

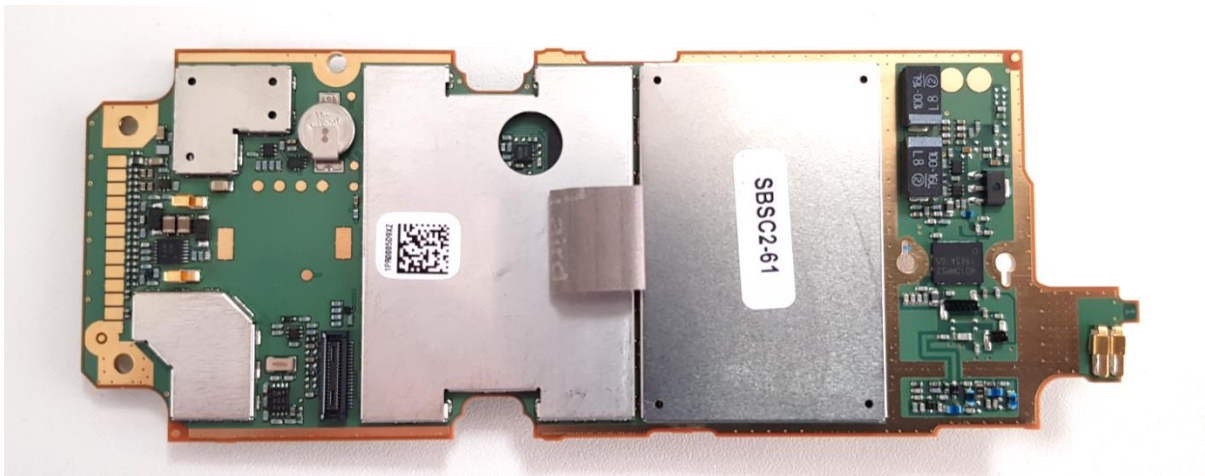


Figure 7. SC2028 Main PCB Top View With Cans Removed

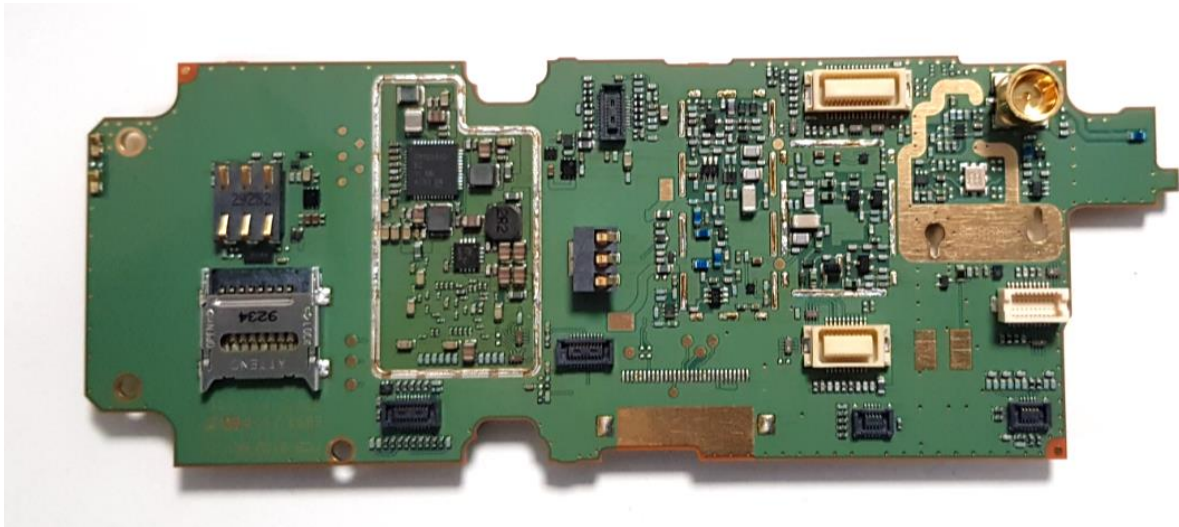


Figure 8. SC2028 Main PCB Bottom View With Cans Removed

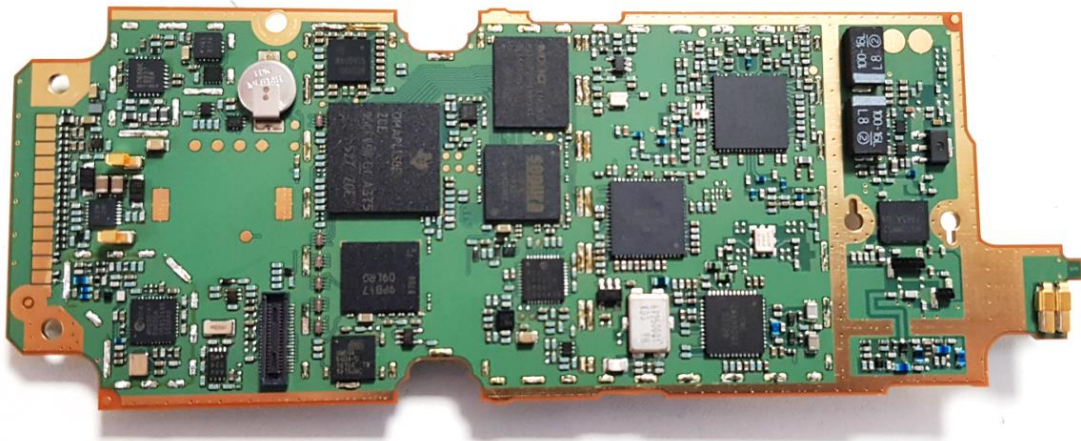


Figure 9. SC2028 LCD Side

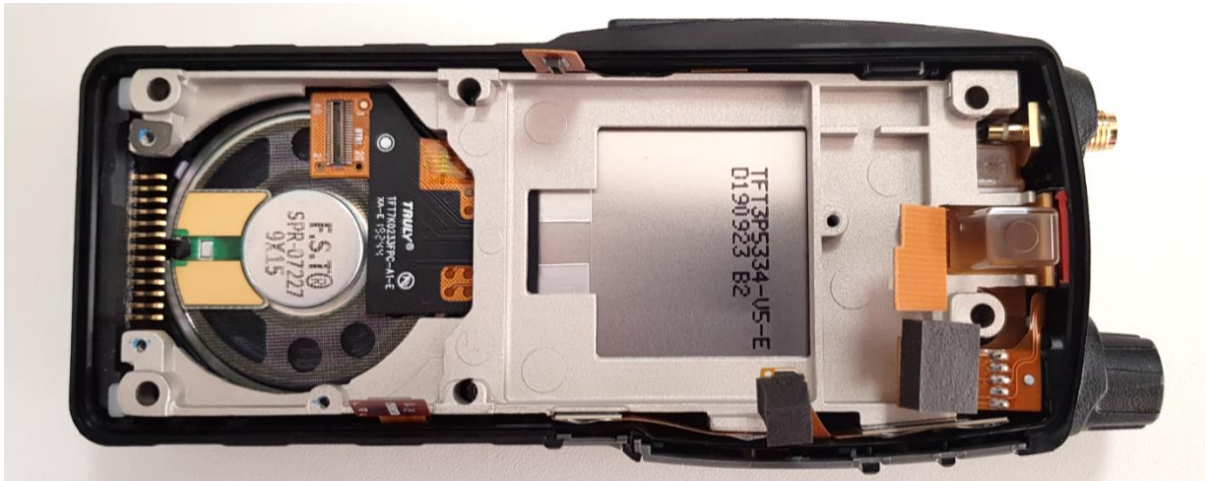


Figure 10. SC2028 LCD Side Rear View

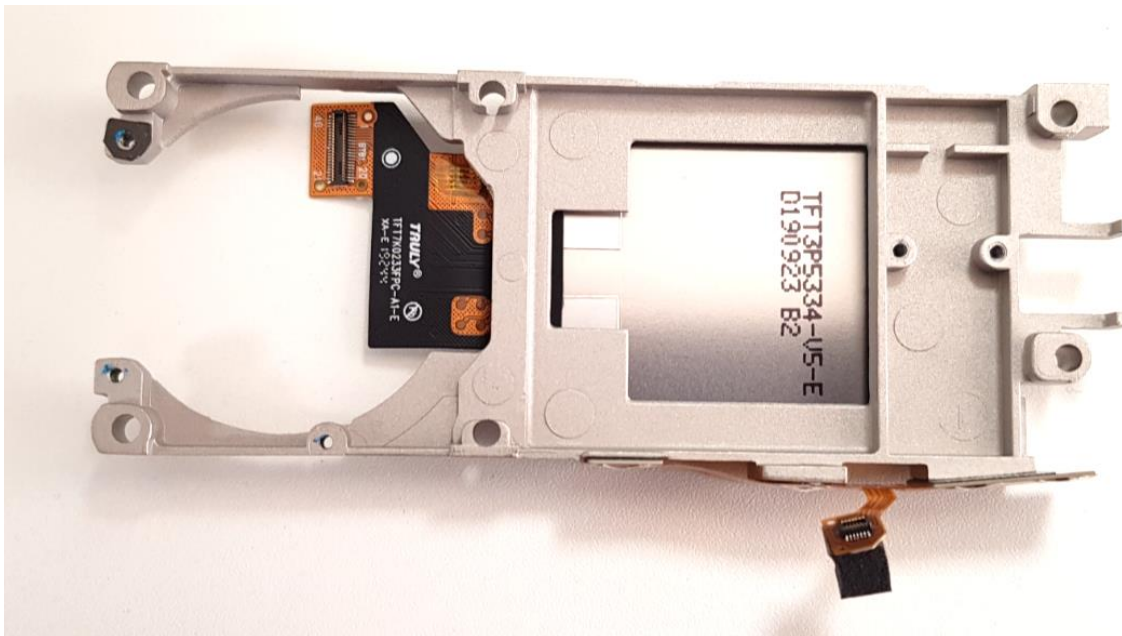


Figure 11. SC2028 LCD Side Front View

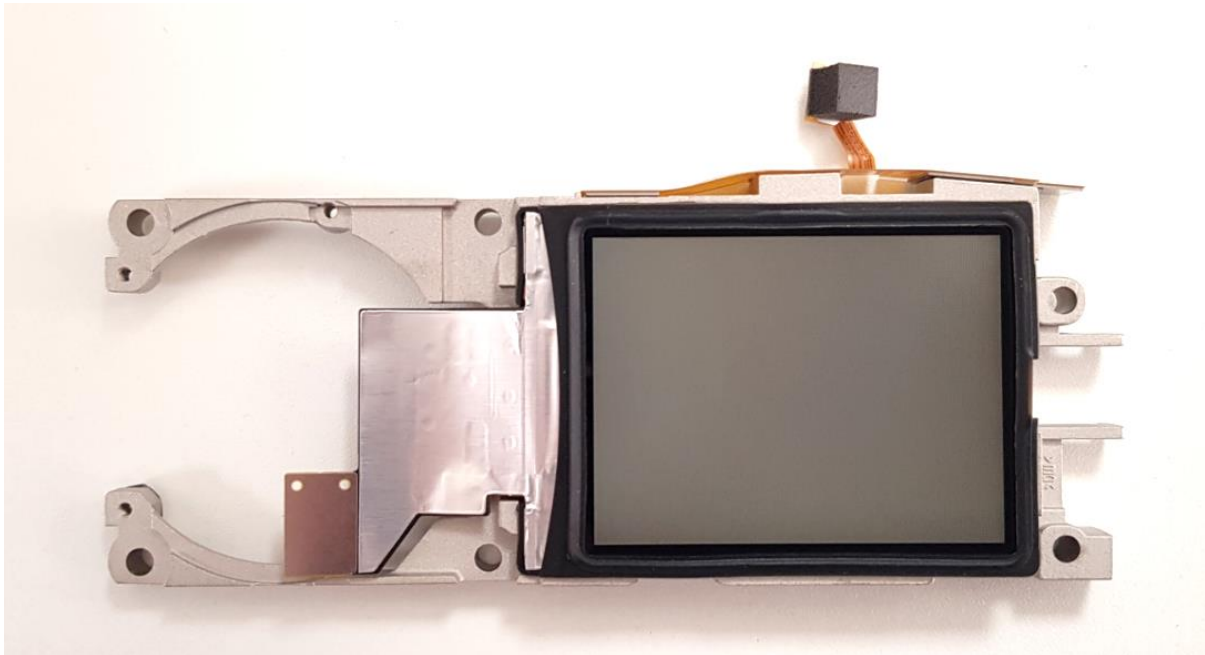


Figure 12. SC2028 Front Cover

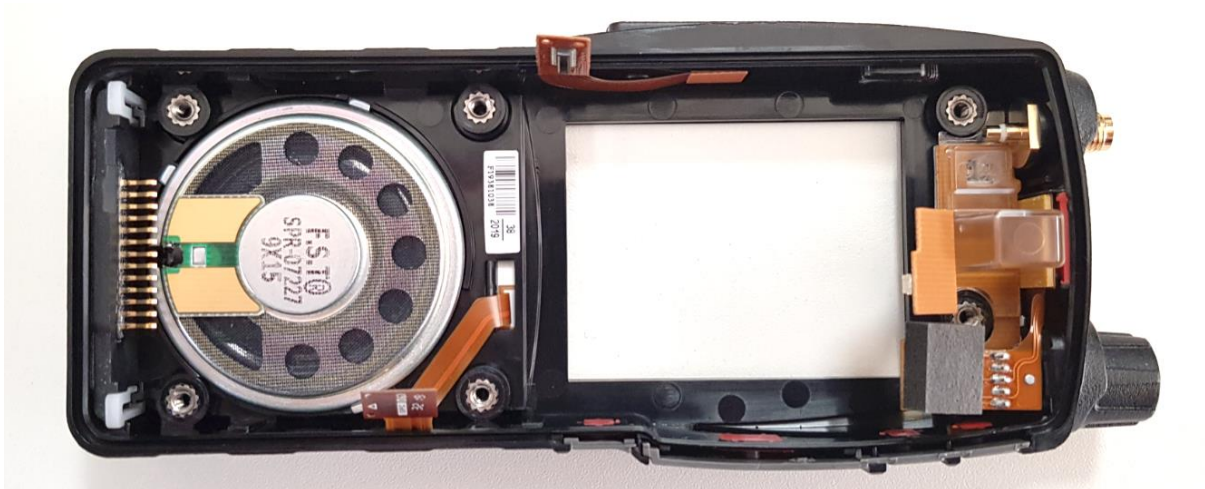


Figure 13. SC2028 Front Cover with Speaker Removed

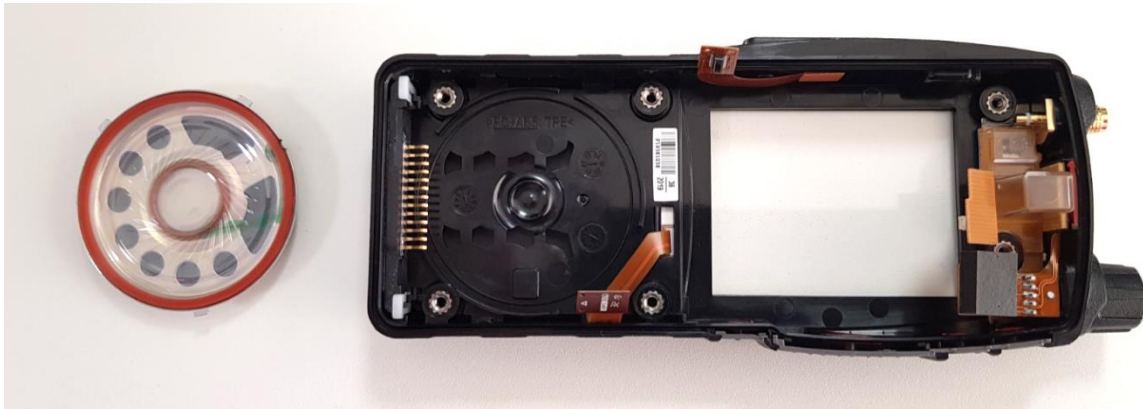


Figure 14. SC2028 Bluetooth Module

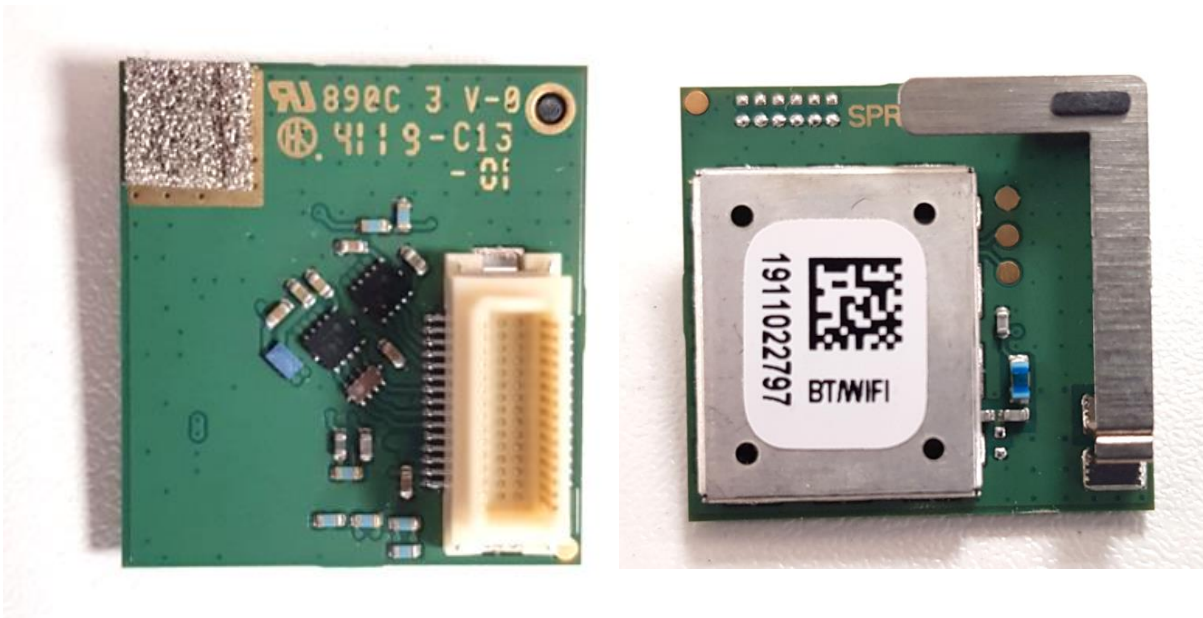
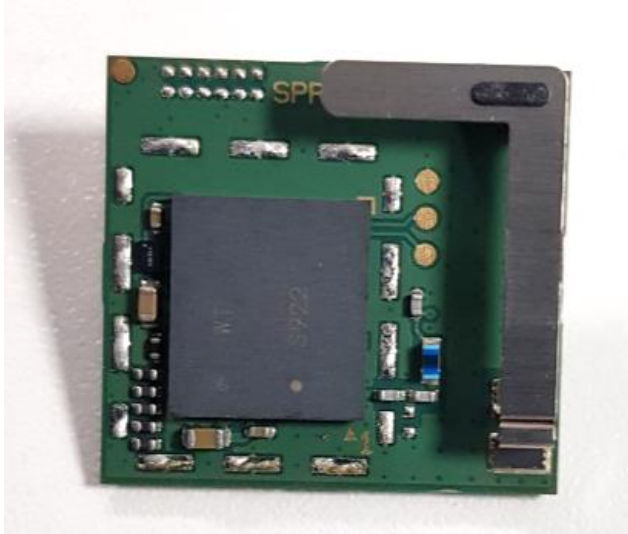


Figure 15. SC2028 Bluetooth Module with Can Removed



Contact Details

Sepura Limited.
9000 Cambridge Research Park
Beach Drive, Waterbeach
Cambridge, CB25 9TL
United Kingdom

www.sepura.com