

Internal Photographs

For

XX6SC2028

Contents

Figure 1.	XX6SC2028 with Bluetooth Fitted	3
Figure 2.	XX6SC2028 with Bluetooth Removed	3
Figure 3.	XX6SC2028 Rear Cover	4
Figure 4.	XX6SC2028 Main PCB with Heatsink Removed.....	4
Figure 5.	XX6SC2028 Main PCB Top View	5
Figure 6.	XX6SC2028 Main PCB Bottom View	5
Figure 7.	XX6SC2028 Main PCB Top View with Cans Removed	6
Figure 8.	XX6SC2028 Main PCB Bottom View with Cans Removed	6
Figure 9.	XX6SC2028 LCD Side	7
Figure 10.	XX6SC2028 LCD Side Rear View	7
Figure 11.	XX6SC2028 LCD Side Front View	8
Figure 12.	XX6SC2028 Front Cover	8
Figure 13.	XX6SC2028 Front Cover with Speaker Removed	9
Figure 14.	XX6SC2028 Bluetooth Module	10
Figure 15.	XX6SC2028 Bluetooth Module with Can Removed	10



Figure 1. XX6SC2028 with Bluetooth Fitted

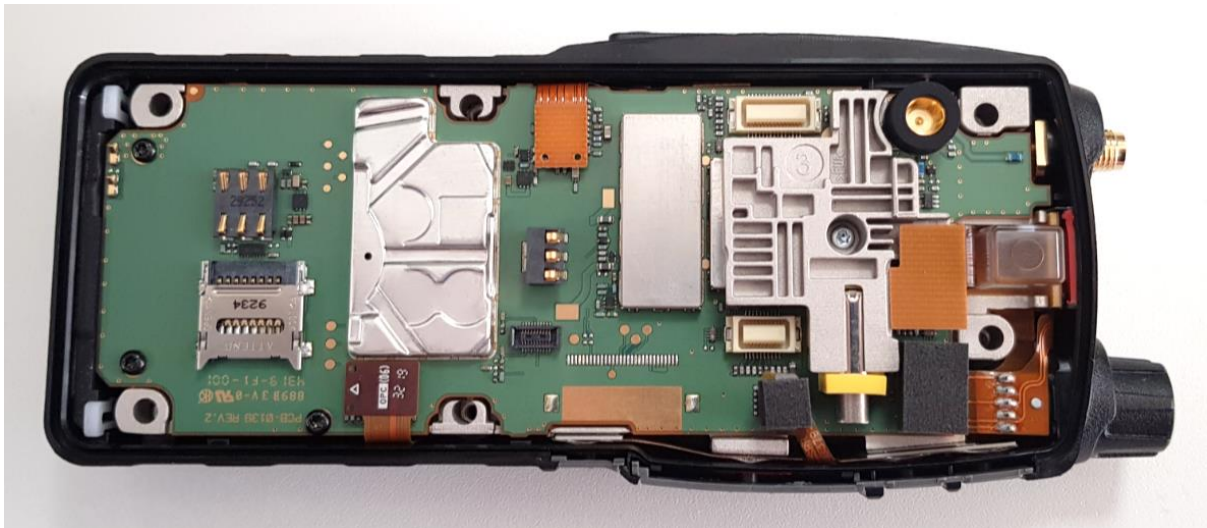


Figure 2. XX6SC2028 with Bluetooth Removed

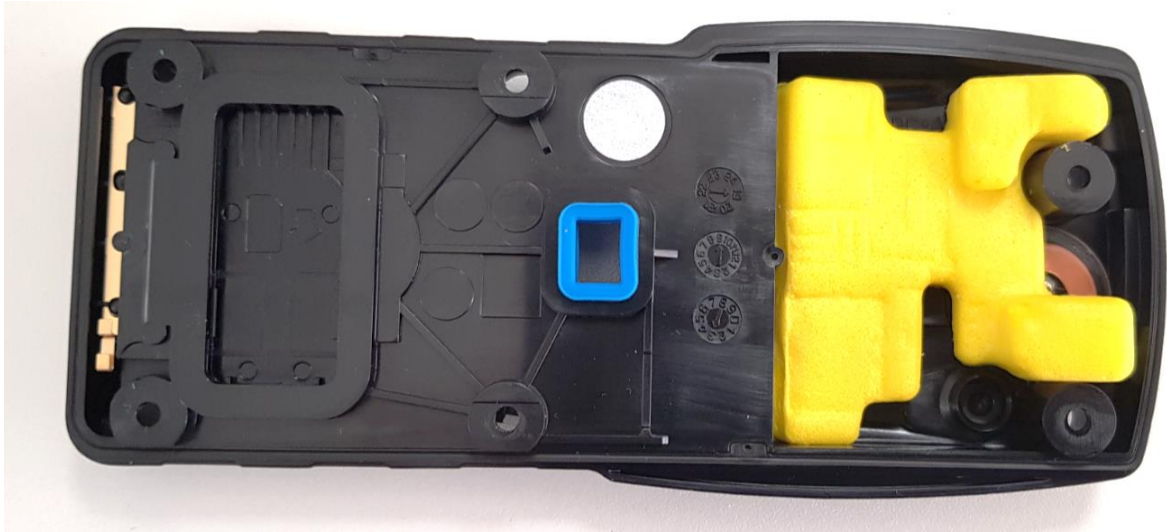


Figure 3. XX6SC2028 Rear Cover



Figure 4. XX6SC2028 Main PCB with Heatsink Removed

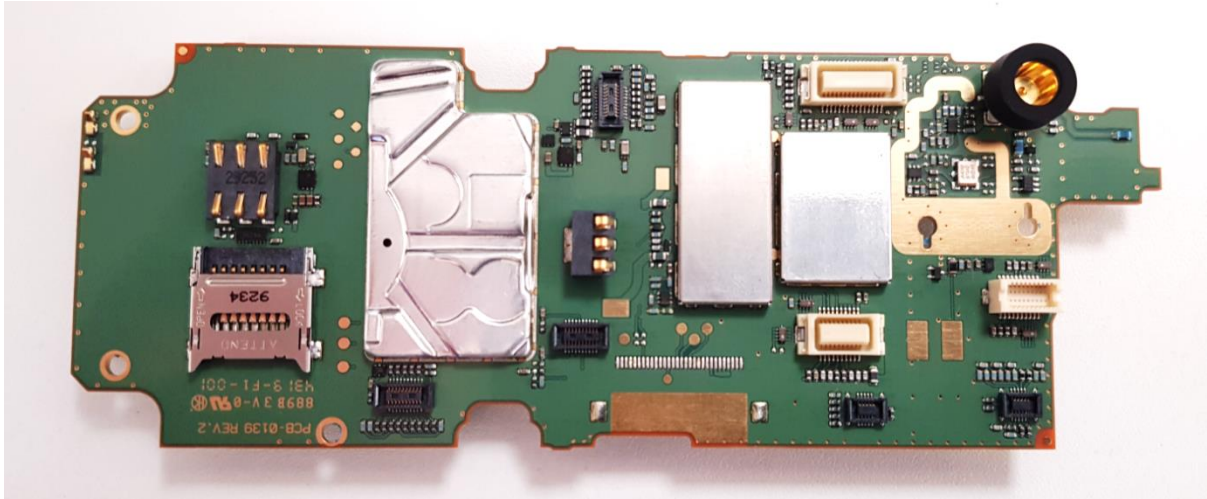


Figure 5. XX6SC2028 Main PCB Top View

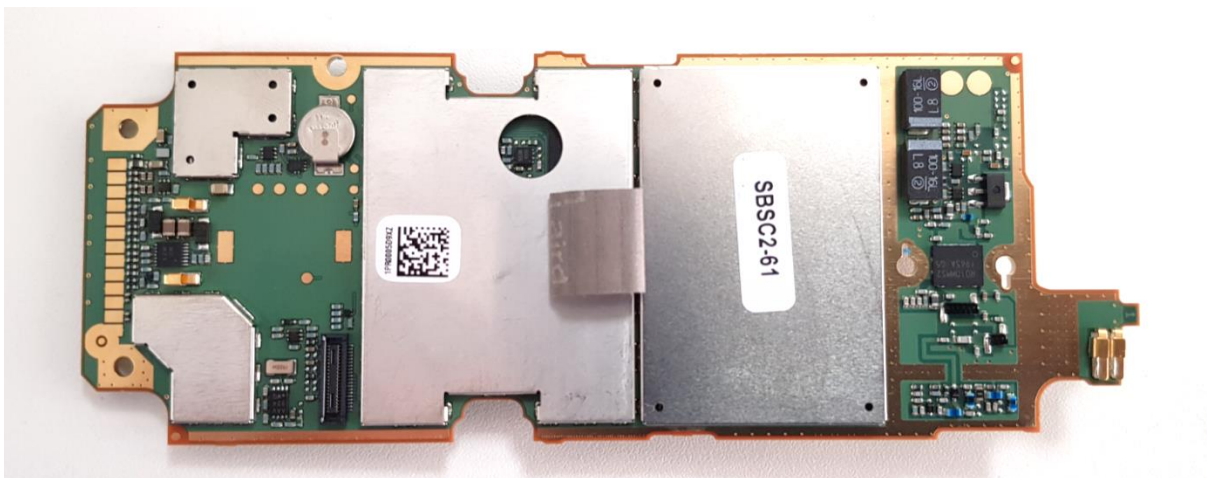


Figure 6. XX6SC2028 Main PCB Bottom View

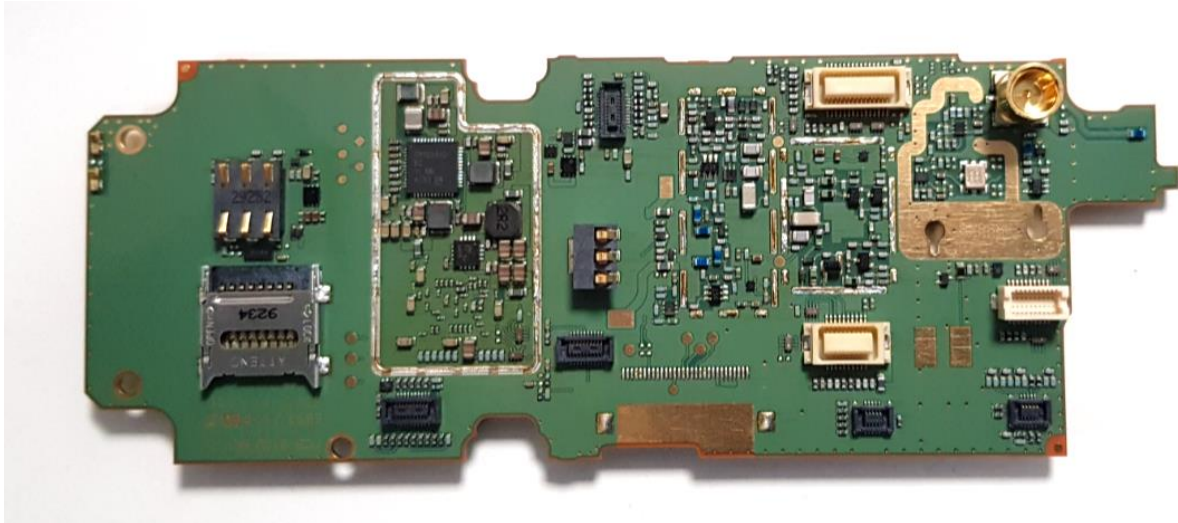


Figure 7. XX6SC2028 Main PCB Top View with Cans Removed

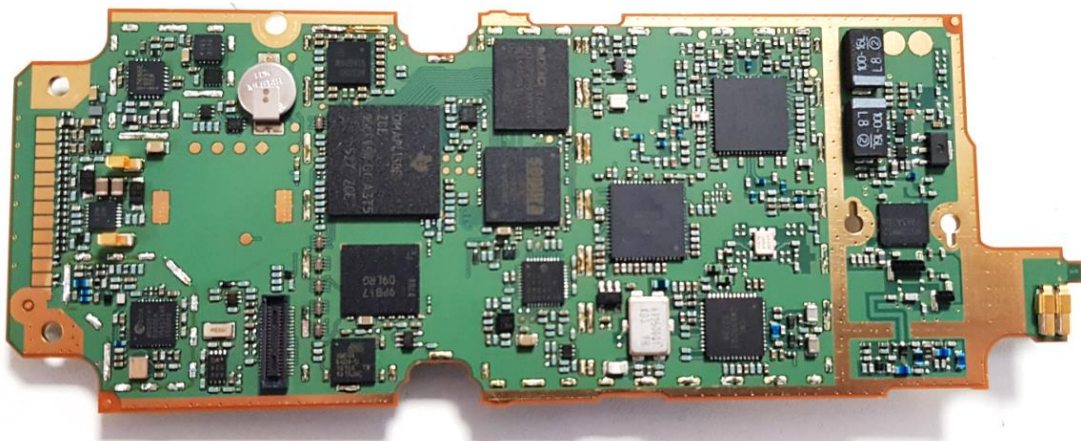


Figure 8. XX6SC2028 Main PCB Bottom View with Cans Removed



Figure 9. XX6SC2028 LCD Side

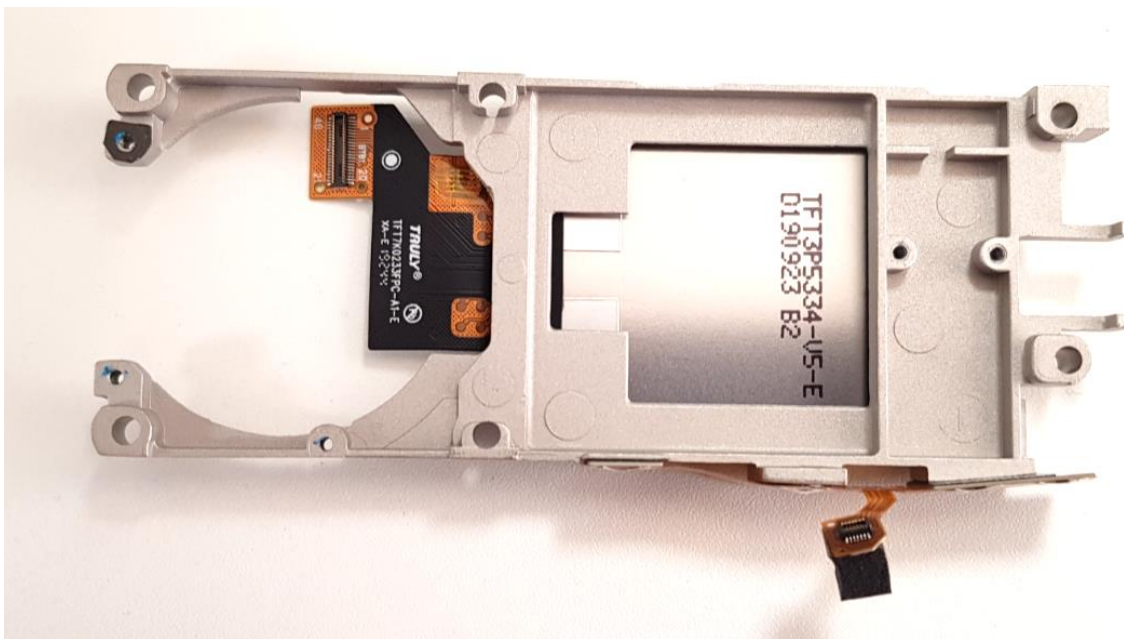


Figure 10. XX6SC2028 LCD Side Rear View

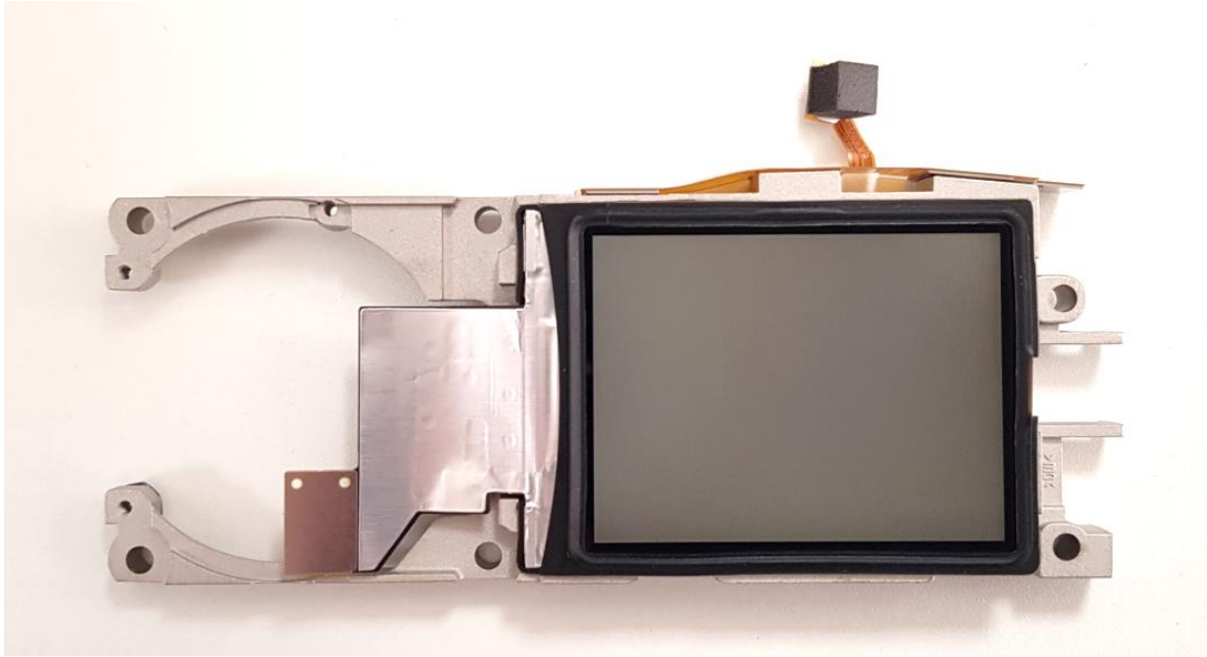


Figure 11. XX6SC2028 LCD Side Front View

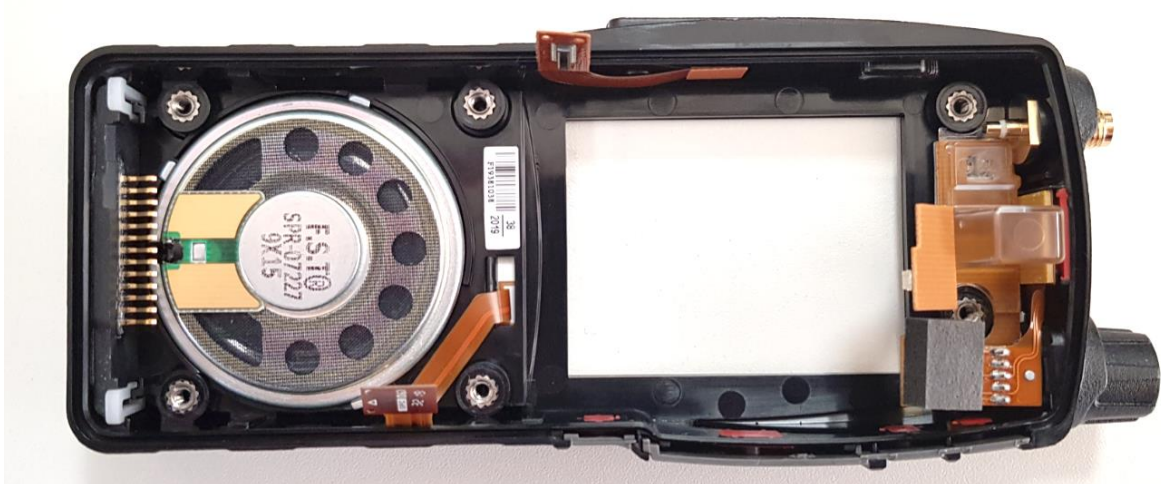


Figure 12. XX6SC2028 Front Cover



Figure 13. XX6SC2028 Front Cover with Speaker Removed

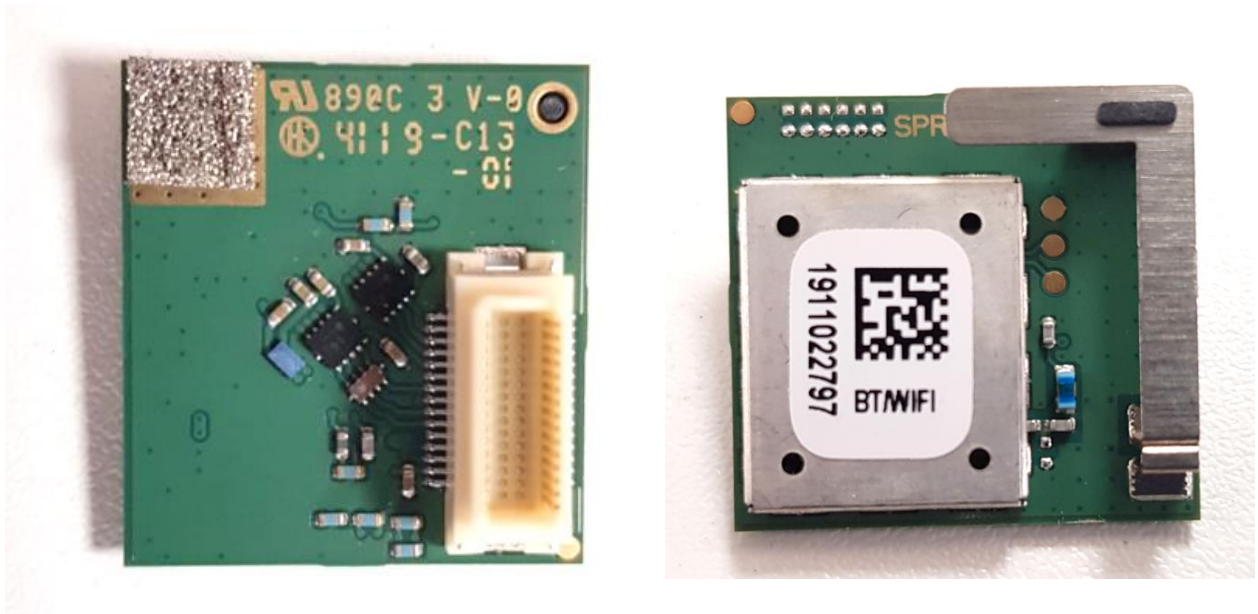


Figure 14. XX6SC2028 Bluetooth Module

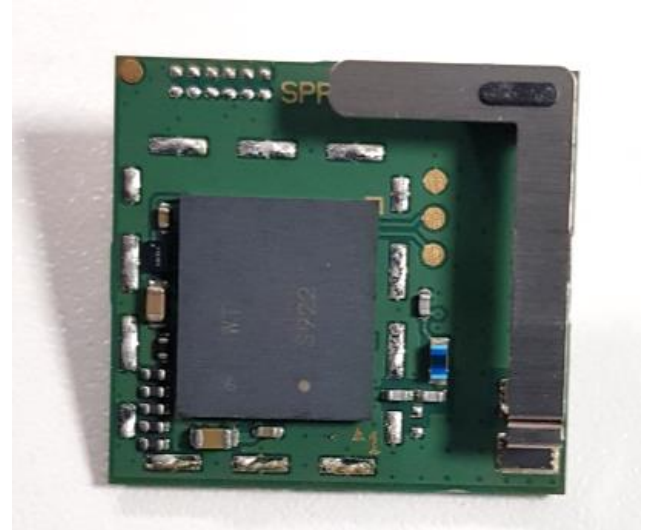


Figure 15. XX6SC2028 Bluetooth Module with Can Removed