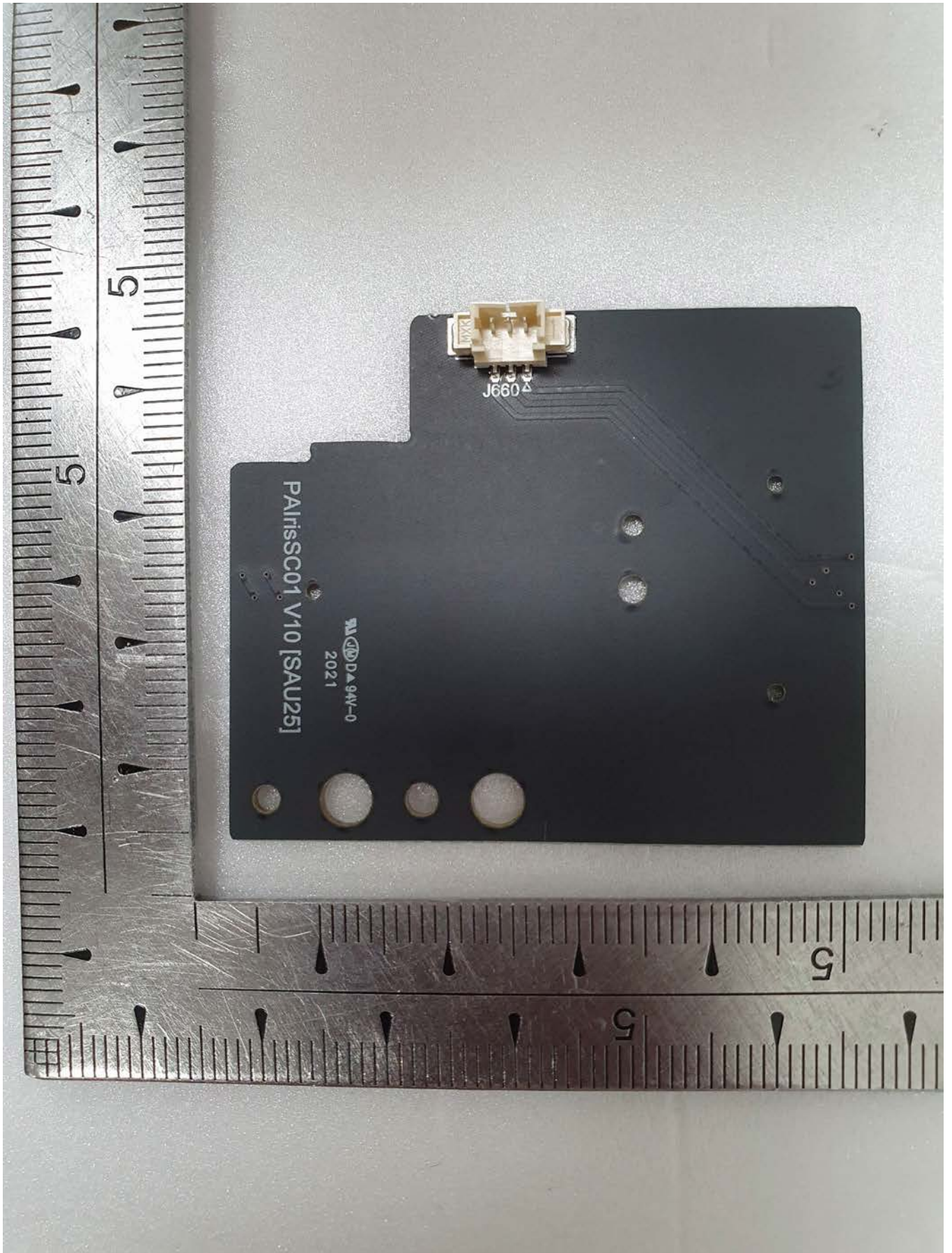
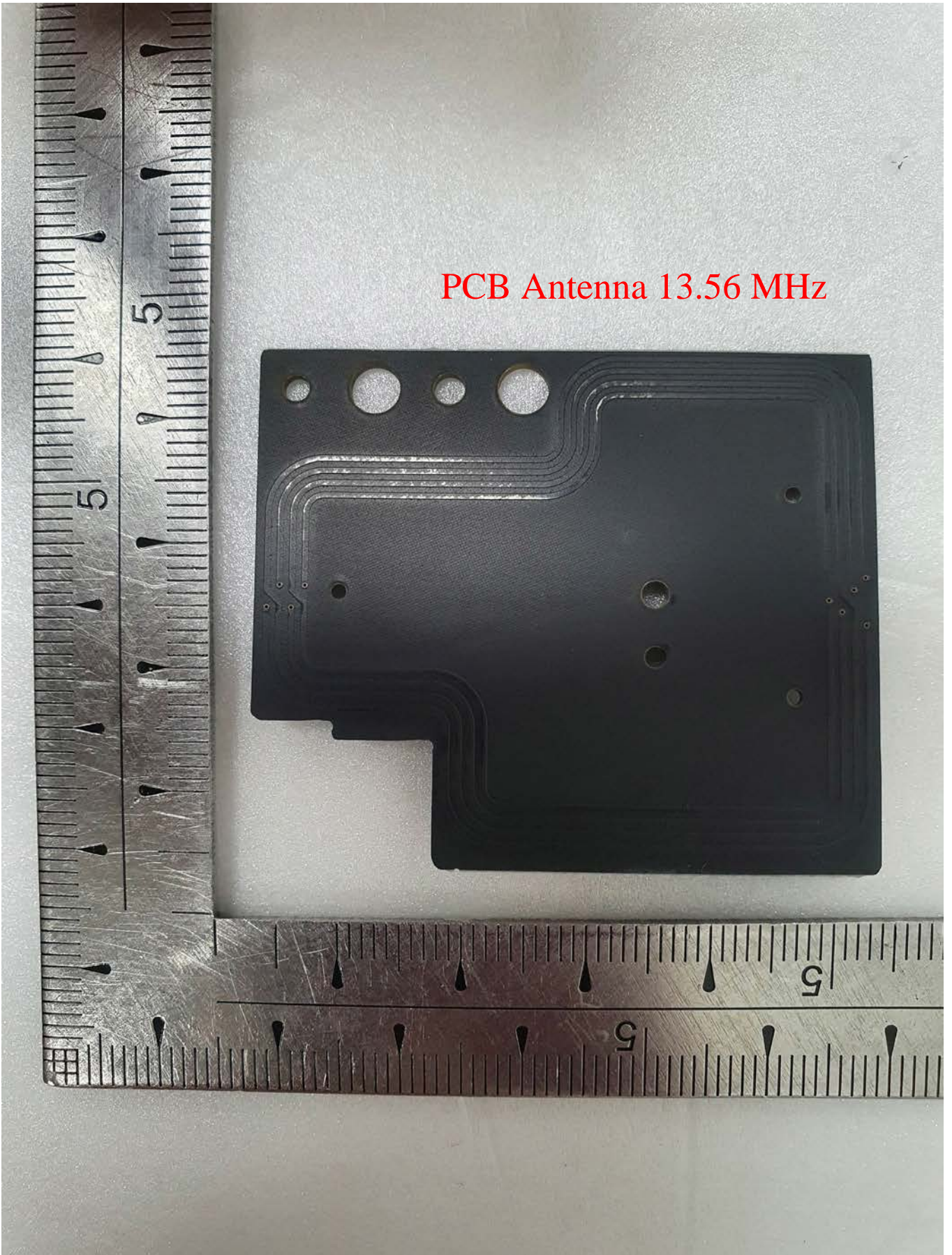




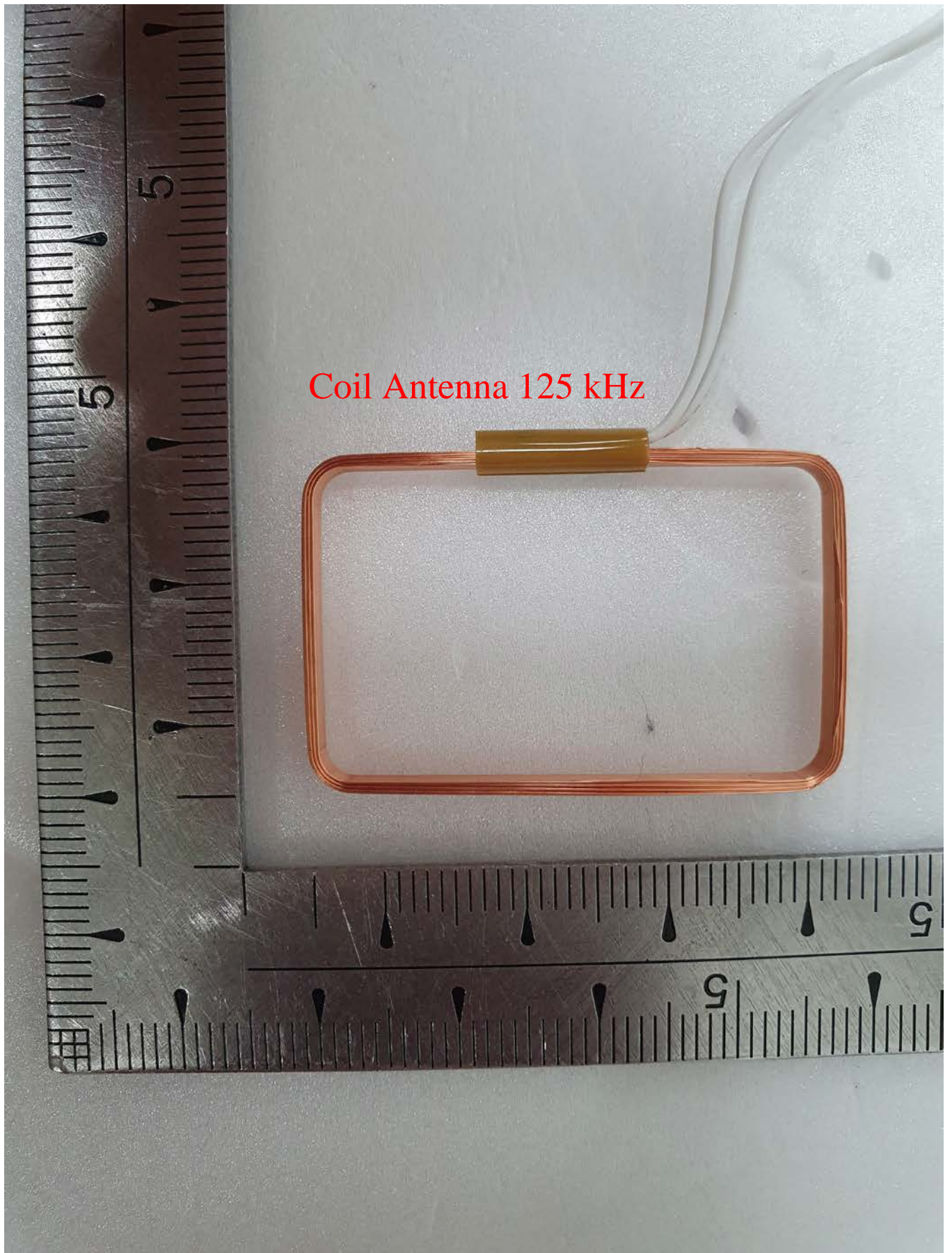
Chip Antenna  
Bluetooth LE Module



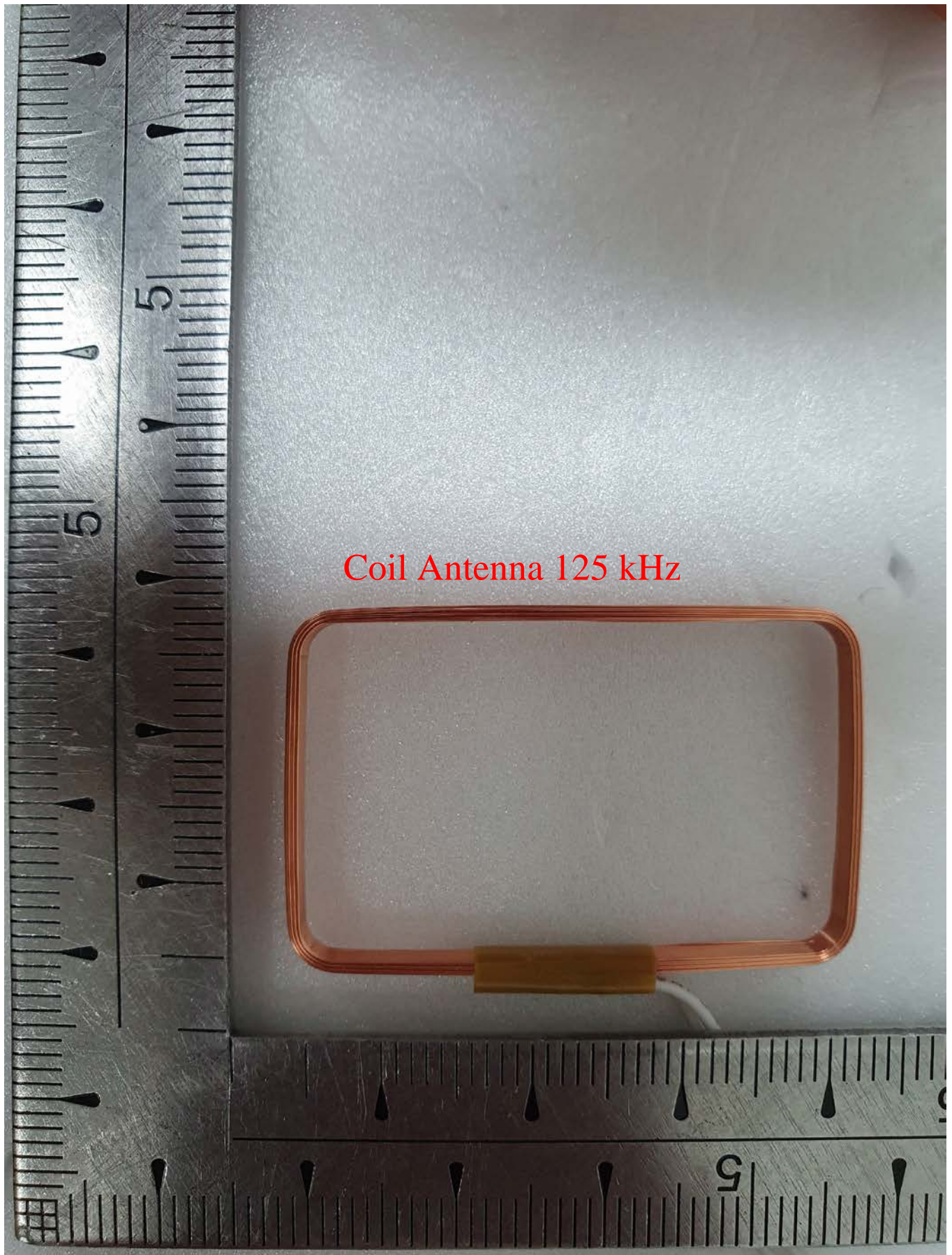
PCB Antenna 13.56 MHz







Coil Antenna 125 kHz



Coil Antenna 125 kHz



**CWT CHANNEL WELL TECHNOLOGY**  
 侨威科技股份有限公司 / 侨威科技股份有限公司

P3 NC  
 P2-  
 P1+

AC ADAPTER 电源适配器 / 電源供應器 / 직류 전원 장치  
 MODEL / 型号 / 型號 / 모델명: KPL-060H-VI  
 INPUT / 輸入 / 輸入 / 정격입력:  
 100-240V ~ 50/60Hz 1.7A  
 OUTPUT / 輸出 / 輸出 / 정격출력:  
 +15V  $\pm$  4.00A 60W

LTE POWER SUPPLY.  
 仅供信息技术设备使用。  
 僅供資訊設備使用。

A/S센터: Sunflower Energy  
 現주소: Channel Well Technology (Guangzhou) Co., Ltd.  
 TEL: 82-070-7011-2806  
 現주소: 중국 (Made in China)  
 주의사항: 안전의 위험이 있으니 부품을 열지 마십시오

EFFICIENCY LEVEL: VI

UL LISTED E161451 Factory ID: G

CEFC EHL Energy Verified

VCCI R43016 RoHS

RELIABLE PARTS MSPA-REM-CWA-KPL060H

MADE IN CHINA 中國製造 / 中國製造

AID CO., LTD

