



# ***Wireless 802.11 Network Mini PCI Adapter***

## **User Guide**



**Model: WLM54AG**

**ZES Part Number: 26998**



## REGULATORY COMPLIANCE INFORMATION

The following regulatory agency information is for model WLM54AG, which includes ZES part number 26998.

### RF Notice

Any changes or modifications to Zebra Enterprise Solutions (ZES) equipment not expressly approved by ZES could void the user's authority to operate the equipment.

### FCC Compliance Statement

This device complies with Part 15 rules. Operation is subject to the following two conditions: (1) This device may not cause harmful interference; (2) this device must accept any interference which may cause undesired operation.

### **FCC ID: XWX-05WLM54AG**

This equipment has been tested and found to comply with the limits for Class A devices, pursuant to Part 15 of the FCC Rules & Regulations.

### Canadian DOC Compliance Statement

This Class A digital apparatus complies with Canadian ICES-003.

Cet appareil numérique de la classe B est conforme à la norme NMB-003 du Canada.

### **IC: 8701A-05WLM54AG**

### Labeling

If the FCC and IC identification numbers are not visible when the module is installed inside another device, then the outside of the device into which the module is installed must also display a label referring to the enclosed module. This exterior label can use the



wording such as “Contains FCC ID: XWX-05WLM54AG” and “Contains IC: 8701A-05WLM54AG”. Any similar wording that expresses the same meaning may be used.

This mini PCI adapter, P/N 26998, will be only installed in devices produced by Zebra Enterprise Solutions Corp.

## **RF EXPOSURE STATEMENT**

This equipment complies with FCC radiation exposure limits set forth for an uncontrolled environment. This equipment should be installed and operated with minimum distance 20cm between the radiator and your body. This transmitter must not be co-located or operating in conjunction with any other antenna or transmitter.



## Document Revision History

Revision	Change	Change Description	Date	Initials
A		Initial Release	12/09/10	HH



<b>Table of Contents</b>		<b>Page</b>
REGULATORY COMPLIANCE INFORMATION.....		2
RF EXPOSURE STATEMENT .....		3
1	INTRODUCTION.....	6
2	INSTALLATION.....	6
3	ANTENNA OPTIONS.....	8



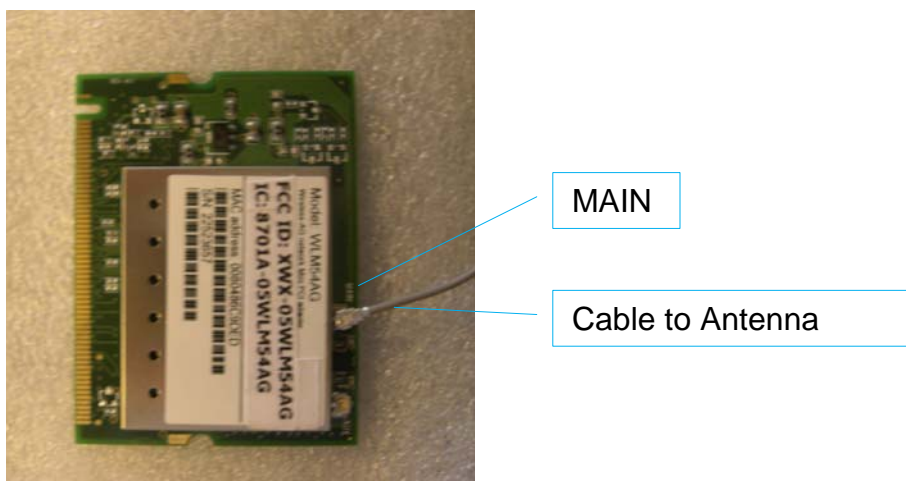
# 1 INTRODUCTION

This mini PCI adapter is manufactured by Compex Systems. It contains a dual-mode single chip MAC/BB/Radio for IEEE 802.11a, 11g, and 11b Wireless LAN. It can support high-speed data transmission of up to 54 Mbps in the 2.4 GHz and 5 GHz frequency bands based on 802.11b/g and 802.11a mode respectively. Only 802.11b/g mode is used when the device is installed in ZES products. This PCI adapter has been originally certified with 2-dBi dipole antenna by Compex. ZES has re-certified this card with FCC and IC for use with higher gain antennas, which are listed in section 3.

# 2 INSTALLATION

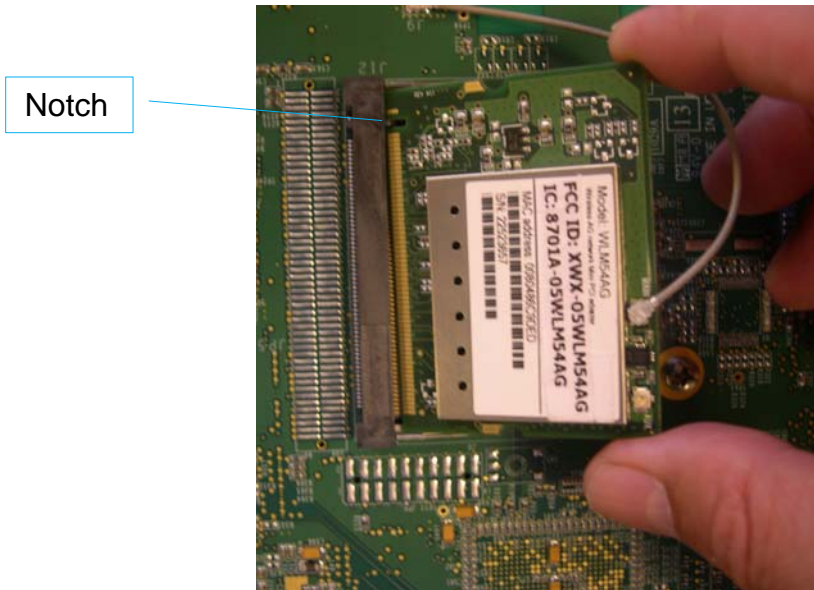
**ATTENTION: The mini PCI card is sensitive to ESD. Perform the following steps in ESD controlled areas and use applicable procedures for handling ESD sensitive devices.**

- 2.1 Ensure that the power to the host equipment is turned off. Connect the antenna cable to connector marked MAIN on the card.

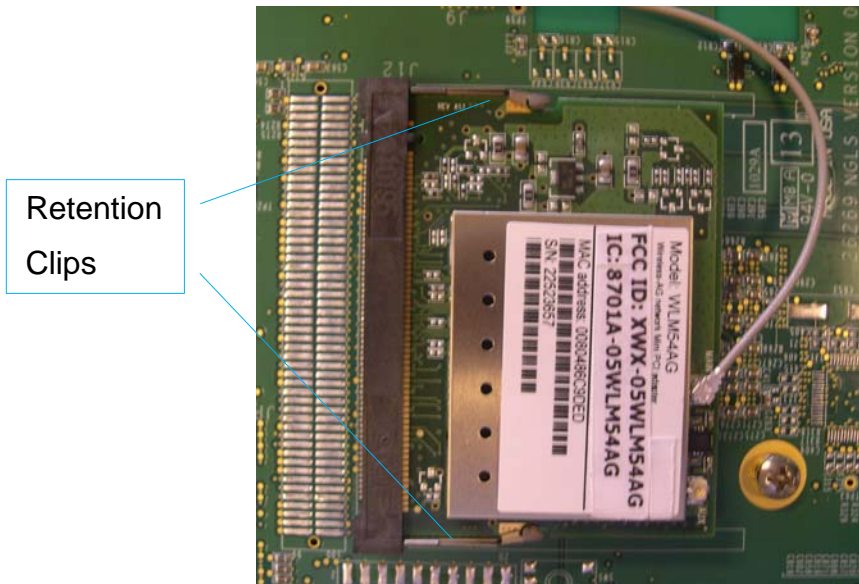




2.2 Align the notched end of the card with the socket. Insert the card into the socket.



2.3 Push the card down until it snaps into the two retention clips.





### 3 ANTENNA OPTIONS

This mini PCI card has been tested and found to be in compliance when used with the following 2.4 GHz antennas:

- 3.1 Cisco Aironet 13.5-dBi Yagi Antenna (P/N AIR-ANT1949)
- 3.2 Cisco Aironet 5.2-dBi Dipole Omnidirectional Antenna (P/N AIR-ANT2506)
- 3.3 Cisco Aironet 2-dBi Dipole Omnidirectional Antenna (P/N AIR-ANT4941)