



# Point&Mobi®

User's Guide

2603694



## Universal Tablet Case With Keyboard

### Package contents

- Universal Tablet Case with Keyboard
- Micro USB Cable
- User's Guide

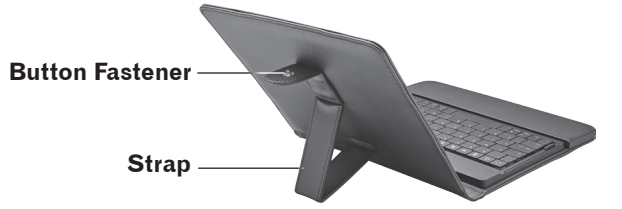
### Features

- Detachable Bluetooth keyboard is compatible with most iOS tablets (iPad®) and Android™ tablets
- Durable case fits most 7-8" tablets
- Hotkeys for quick access to multimedia and other applications
- Charges with a micro USB cable
- Palm rest helps improve comfort and posture

### Set Up the Tablet Case

The keyboard is held in by magnets and can be removed out of the case.

Use the strap as a stand to prop up the case. To adjust the stand angle, use the two button fasteners on the strap.



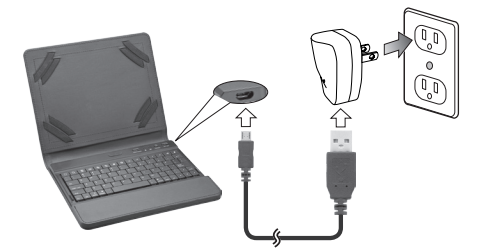
Slide the **OFF/ON** switch to **OFF** after use.

- Caution:**
- Keep your tablet case with keyboard away from humidity, and extreme temperatures.
  - Avoid contact with corrosive materials, such as perfume, alcohol, or cleaning agents.

### Charge the Keyboard

When the battery power is low, the charging indicator blinks.

1. Use the micro USB cable to connect the keyboard to a USB power adapter. The USB power adapter should supply DC 5V, 500mA.
2. Plug the power adapter to a wall outlet. The charging indicator lights red during charging, and turns green when charging is complete.
3. Unplug the charging cable after charging.



### Lithium Battery Safety Instructions

- Do not burn or bury batteries. Do not puncture or crush. Do not disassemble.
- Do not dispose of lithium batteries in the trash. Recycle at your local retail store.
- Use only chargers rated for lithium cells. Be sure the charger's voltage and current settings are correct for the battery pack being charged.
- If the electrolyte in the cells gets on your skin, thoroughly wash with soap and water. If in the eyes, rinse thoroughly with cool water. Immediately seek medical attention.
- Follow the manufacturer's instructions for charging the product and do not charge longer than recommended. Unplug the charger when the battery is charged.

### Pair the Keyboard to your Tablet

1. Slide the **OFF/ON** switch to **ON**. The Bluetooth indicator (📶) lights for 2 seconds, then turns off.
2. Activate your tablet's Bluetooth function (refer to the user's guide).
3. Press the keyboard's **Connect** button, the Bluetooth indicator flashes on, indicating the keyboard is searching for Bluetooth devices.
4. When **Bluetooth 3.0 Keyboard** appears in the Bluetooth devices list, tap it.
5. You are prompted to enter a pairing code. Enter the code and press **Enter/Return** on the keyboard to complete the pairing.

#### Note:

- If no button or key is pressed for 10 minutes, the keyboard enters standby mode (shown as **Disconnected** in the Bluetooth devices list) to save power. Tap any key to use the keyboard.
- If a key is pressed and held for up to 10 minutes, the keyboard enters standby mode. Release the pressed key and then press any other key to waken the keyboard.

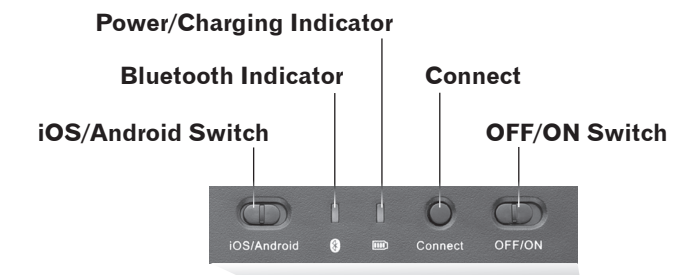
### Change Bluetooth Devices

Your Bluetooth keyboard will automatically remember the most recently paired device. To use a new device, you must first disconnect the recently paired device.

To disconnect the paired device, press the keyboard's **Connect** button. The keyboard starts searching for another Bluetooth device.

### Use the Keyboard

- Set to **iOS** for iOS tablets. Hotkeys are active (the entire top row).
- Set to **Android** for Android tablets. Only green hotkeys are active.
- **Fn** key activates the number pad functions for the keys with blue characters.



### Specifications

Power Input .....	5V, 500mA
Bluetooth Pairing Range .....	6.5 ft. (2m)
Bluetooth Connection Range .....	32 ft. (10m)
Bluetooth Protocol .....	V3.0
Built-in Li-Po Battery Capacity .....	300mAh
Charging Time .....	3 hours (Max.)
Continuous Working Time .....	90 hours (Min.)
Operating Temperature .....	0~40°C (0~104°F)
Storage Temperature .....	-20~60°C (-4~140°F)
Storage Humidity .....	30~95% (relative humidity)
Keyboard Dimensions (HWD) .....	8.7 × 4.7 × 0.3 in (220 × 120 × 7mm)
Tablet Case Dimensions (HWD) .....	8.9 × 7.7 × 1.1 in (225 × 195 × 27mm)
Case with Keyboard Weight .....	16.3 oz (460g)

Specifications are subject to change and improvement without notice. Actual product may vary from the images found in this document.

### FCC Information

This equipment has been tested and found to comply with the limits for a Class B digital device, pursuant to Part 15 of the FCC Rules. These limits are designed to provide reasonable protection against harmful interference in a residential installation. This equipment generates, uses and can radiate radio frequency energy and, if not installed and used in accordance with the instructions, may cause harmful interference to radio communications. However, there is no guarantee that interference will not occur in a particular installation. If this equipment does cause harmful interference to radio or television reception, which can be determined by turning the equipment off and on, the user is encouraged to try to correct the interference by one or more of the following measures:

- Reorient or relocate the receiving antenna.
- Increase the separation between the equipment and receiver.
- Connect the equipment into an outlet on a circuit different from that to which the receiver is connected.
- Consult the dealer or an experienced radio/TV technician for help.

If you cannot eliminate the interference, the FCC requires that you stop using your product. Changes or modifications not expressly by the party responsible for compliance could void the user's authority to operate the equipment.

This device complies with Part 15 of the FCC Rules. Operation is subject to the following two conditions: (1) This device may not cause harmful interference, and (2) this device must accept any interference received, including interference that may cause undesired operation.

### Limited Warranty

Ignition L.P. warrants this product against defects in materials and workmanship under normal use by the original purchaser for **ninety (90) days** after the date of purchase. IGNITION L.P. MAKES NO OTHER EXPRESS WARRANTIES.

This warranty does not cover: (a) damage or failure caused by or attributable to abuse, misuse, failure to follow instructions, improper installation or maintenance, alteration, accident, Acts of God (such as floods or lightning), or excess voltage or current; (b) improper or incorrectly performed repairs by persons who are not a Ignition L.P. Authorized Service Facility; (c) consumables such as fuses or batteries; (d) ordinary wear and tear or cosmetic damage; (e) transportation, shipping or insurance costs; (f) costs of product removal, installation, set-up service, adjustment or reinstallation; and (g) claims by persons other than the original purchaser.

Should a problem occur that is covered by this warranty, take the product and the sales receipt as proof of purchase date to the place of purchase. Ignition L.P. will, at its option, unless otherwise provided by law: (a) repair the product without charge for parts and labor; (b) replace the product with the same or a comparable product; or (c) refund the purchase price. All replaced parts and products, and products on which a refund is made, become the property of Ignition L.P. New or reconditioned parts and products may be used in the performance of warranty service. Repaired or replaced parts and products are warranted for the remainder of the original warranty period. You will be charged for repair or replacement of the product made after the expiration of the warranty period.

IGNITION L.P. EXPRESSLY DISCLAIMS ALL WARRANTIES AND CONDITIONS NOT STATED IN THIS LIMITED WARRANTY. ANY IMPLIED WARRANTIES THAT MAY BE IMPOSED BY LAW, INCLUDING THE IMPLIED WARRANTY OF MERCHANTABILITY AND,

IF APPLICABLE, THE IMPLIED WARRANTY OF FITNESS FOR A PARTICULAR PURPOSE, SHALL EXPIRE ON THE EXPIRATION OF THE STATED WARRANTY PERIOD.

EXCEPT AS DESCRIBED ABOVE, IGNITION L.P. SHALL HAVE NO LIABILITY OR RESPONSIBILITY TO THE PURCHASER OF THE PRODUCT OR ANY OTHER PERSON OR ENTITY WITH RESPECT TO ANY LIABILITY, LOSS OR DAMAGE CAUSED DIRECTLY OR INDIRECTLY BY USE OR PERFORMANCE OF THE PRODUCT OR ARISING OUT OF ANY BREACH OF THIS WARRANTY, INCLUDING, BUT NOT LIMITED TO, ANY DAMAGES RESULTING FROM INCONVENIENCE AND ANY LOSS OF TIME, DATA, PROPERTY, REVENUE, OR PROFIT AND ANY INDIRECT, SPECIAL, INCIDENTAL, OR CONSEQUENTIAL DAMAGES, EVEN IF IGNITION L.P. HAS BEEN ADVISED OF THE POSSIBILITY OF SUCH DAMAGES.

Some states do not allow limitations on how long an implied warranty lasts or the exclusion or limitation of incidental or consequential damages, so the above limitations or exclusions may not apply to you. This warranty gives you specific legal rights, and you may also have other rights which vary from state to state. You may contact Ignition L.P. at:

Ignition L.P., 3102 Maple Ave., Suite 450, Dallas, TX 75201 02/09

For product support, call **1-866-315-0426**

The Bluetooth® word mark and logos are registered trademarks owned by Bluetooth SIG, Inc. and any use of such marks by Ignition L.P. is under license. Other trademarks and trade names are those of their respective owners.

Android is a trademark of Google Inc.  
iOS is a trademark or registered trademark of Cisco in the U.S. and other countries and is used under license.

**RoHS** Complies with the European Union's "Restriction of Hazardous Substances Directive," which protects the environment by restricting specific hazardous materials and products.

© 2013. Ignition L.P. All rights reserved.  
PointMobi is a registered trademark used by Ignition L.P.  
Printed in China 08A13 2603694