



Spectrum 2.4Ghz, TX RF Module Pictures

Version 1.0

RF Module Pictures	Version: 1.0
User Interface Specification	Date: 5/17/2010 4:08:00 PM

Revision History

Date	Version	Description	Author
10/20/2009	1.0	Original.	Chris S. Russell
05/17/2010	1.1	Pictures of module with new switch.	Chris S. Russell

RF Module Pictures	Version: 1.0
User Interface Specification	Date: 5/17/2010 4:08:00 PM

Table of Contents

1.	FEATURES.....	ERROR! BOOKMARK NOT DEFINED.
2.	FUNCTIONAL DESCRIPTION.....	ERROR! BOOKMARK NOT DEFINED.
3.	APPLICATION	ERROR! BOOKMARK NOT DEFINED.
4.	FUNCTIONAL OVERVIEW.....	ERROR! BOOKMARK NOT DEFINED.
4.1	LINK LAYER MODES	ERROR! BOOKMARK NOT DEFINED.
4.2	PACKET BUFFERS	ERROR! BOOKMARK NOT DEFINED.
4.3	DATA RATES	ERROR! BOOKMARK NOT DEFINED.
5.	SPI COMMUNICATION.....	ERROR! BOOKMARK NOT DEFINED.
6.	POWER MANAGEMENT.....	ERROR! BOOKMARK NOT DEFINED.
7.	LOW NOISE AMPLIFIER (LNA) AND RECEIVED SIGNAL STRENGTH INDICATION (RSSI)	ERROR! BOOKMARK NOT DEFINED.
8.	RF POWER AMPLIFIER.....	ERROR! BOOKMARK NOT DEFINED.

RF Module Pictures	Version: 1.0
User Interface Specification	Date: 5/17/2010 4:08:00 PM

1. Pictures

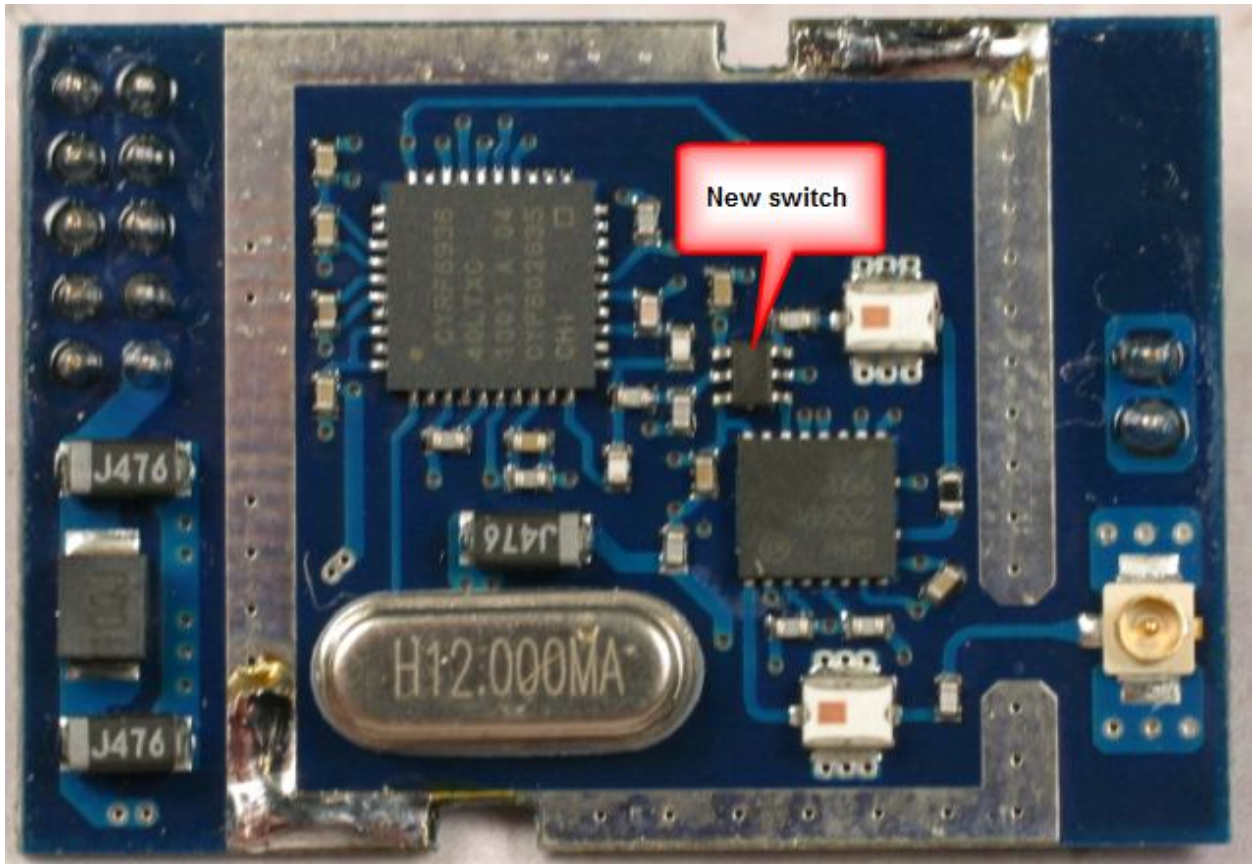


Figure 1 2.4GHz RF Module Top

RF Module Pictures	Version: 1.0
User Interface Specification	Date: 5/17/2010 4:08:00 PM

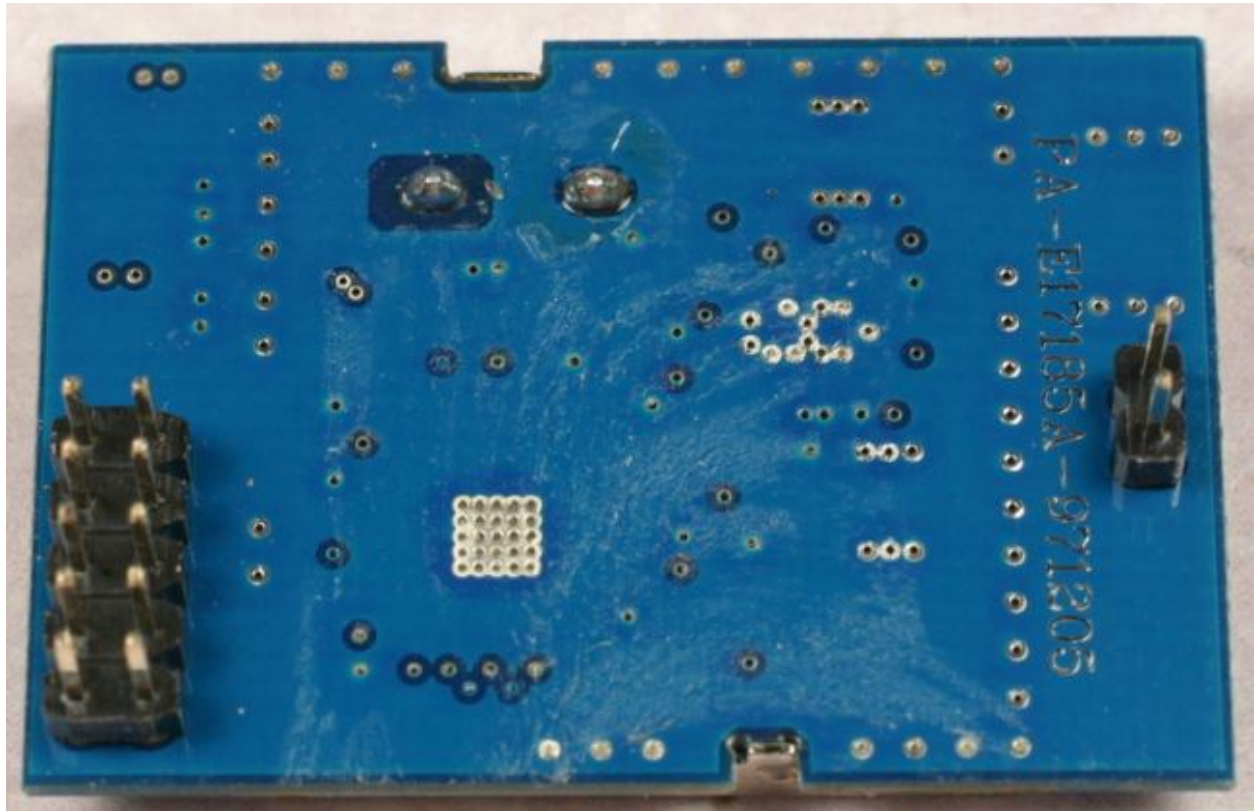


Figure 2 2.4GHz RF Module Bottom

RF Module Pictures	Version: 1.0
User Interface Specification	Date: 5/17/2010 4:08:00 PM



Figure 3 2.4GHz RF Module Top with RF can